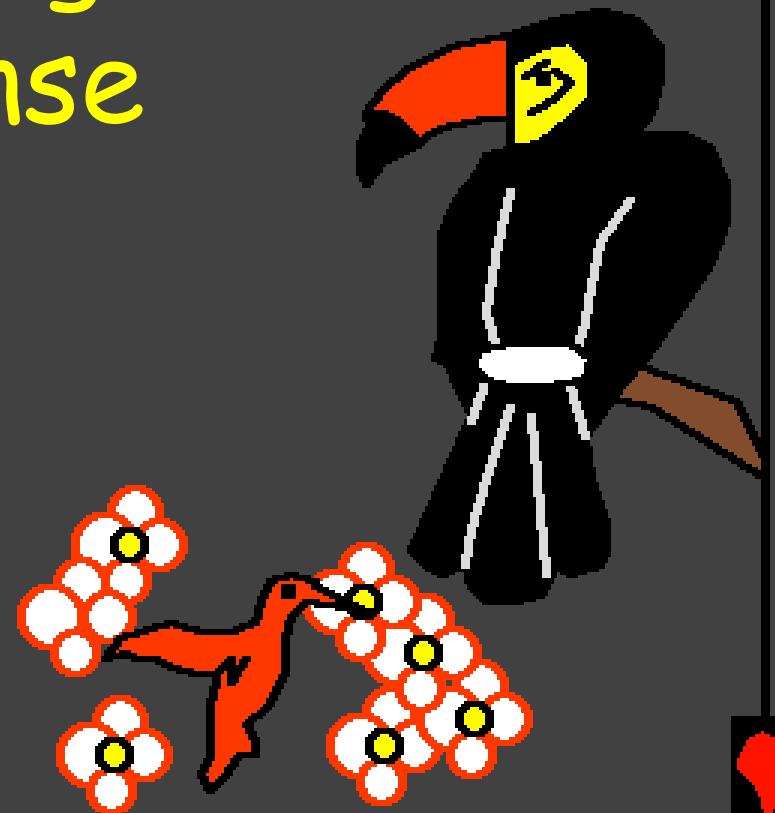
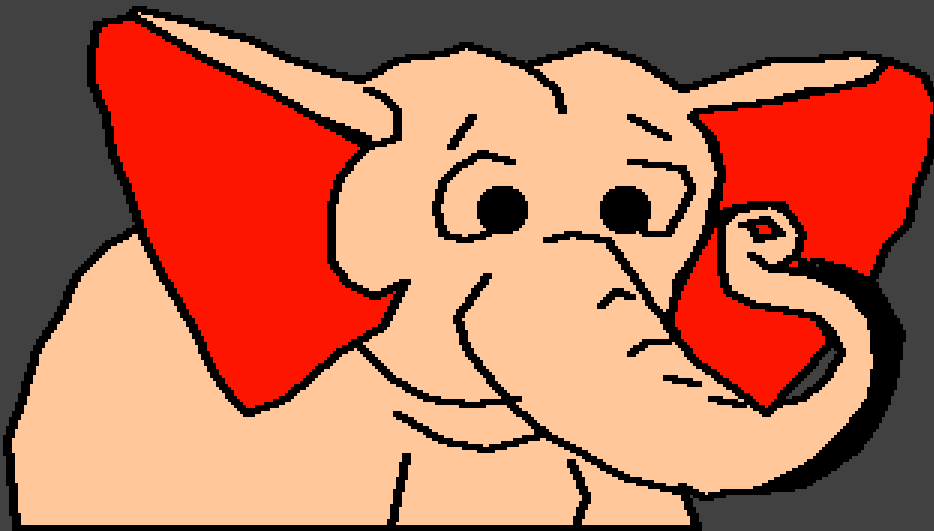


Baibulo ya ana
Ikupasilani

Paneme Mulungu
anapanga zonse



Yolembedwa ndi: Edward Hughes

Yojambulidwa ndi: Byron Unger; Lazarus

Yotengedwa ndi: Bob Davies; Tammy S.

Yotathauzidwa ndi: Phiri Williams

Yo pangidwa ndi: Bible for Children
www.M1914.org

©2013 Bible for Children, Inc.

Chilolezo: Muli ndi ufulu wotenga ndi kuchurukitsa
makopewa koma osagulitsa.



Anatipanga ife ndindani? Baibulo, mau a Mulungu amanena zamomwe munthu analengedwela ndi chiyambi cha munthu. Kalekale, Mulungu analenga munthu woyamba ndikumutcha dzina loti Adamu.



Mulungu analenga Adamu kuchokera ku mfumbi la dziko la pansi. Pamene Mulungu ana mpumira mwa Adamu, anakhala wa moyo. Anapezeka yekha mmunda wokongola wotchedwa kuti Edeni.



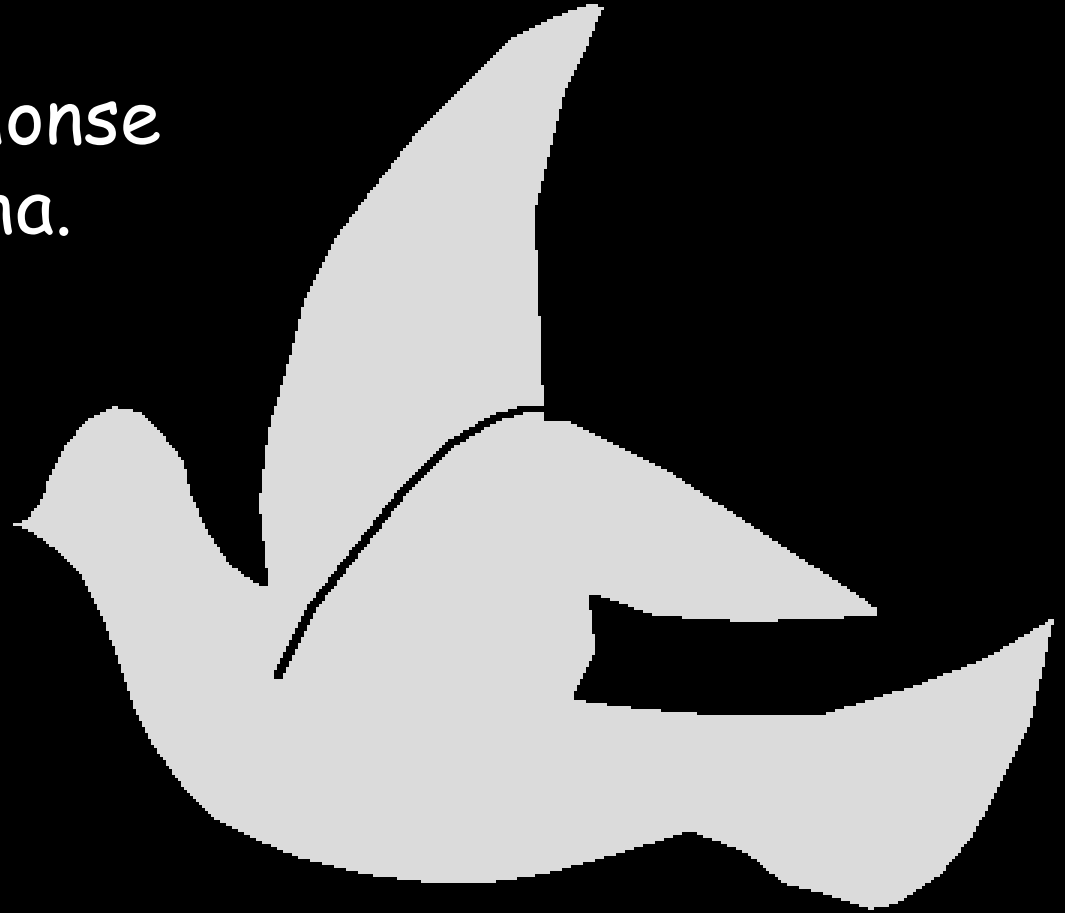
Pamene Mulungu asadalenge Adamu, iye anapanga dziko ndi zinthu zokongola. Pan'gono ndi pan'gono Mulungu anapanga malo okwera, maluwa onunkhira ndi mitengo yayitali, mbalame za mapiko wowala ndi njuchi ndi nkhono zo telera.



Zowonadi, Mulungu
anapanga zonse
zilipo-zonse.



Pachiyambi penipeni,
Mulungu asadalenge
zonse, panalibe chilichonse
kupati Mulungu yekha.
Kunalibe anthu kapena
malo kapena zinthu.
Panalibe. Panalibe
kuwala kapena
mdima, panalibe
kukwera kapena
kutsika. Kapena mawa
kapena dzulo. Kunali
Mulungu yekha amene
alibe chiyambi. Kenaka
Mulungu anachita!



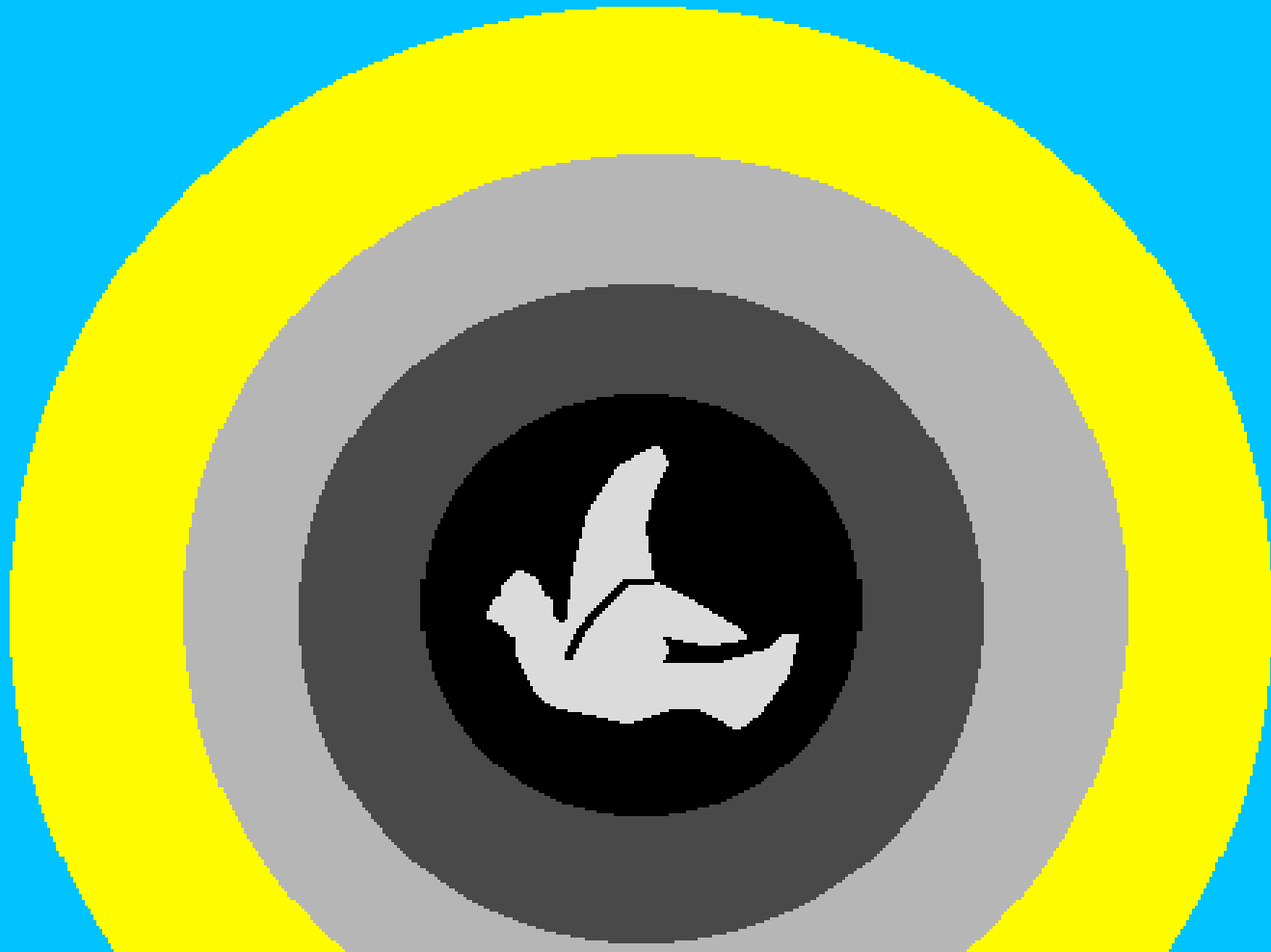
Pachiyambi
Mulungu analenga
kumwamba ndi
dziko lapansi.



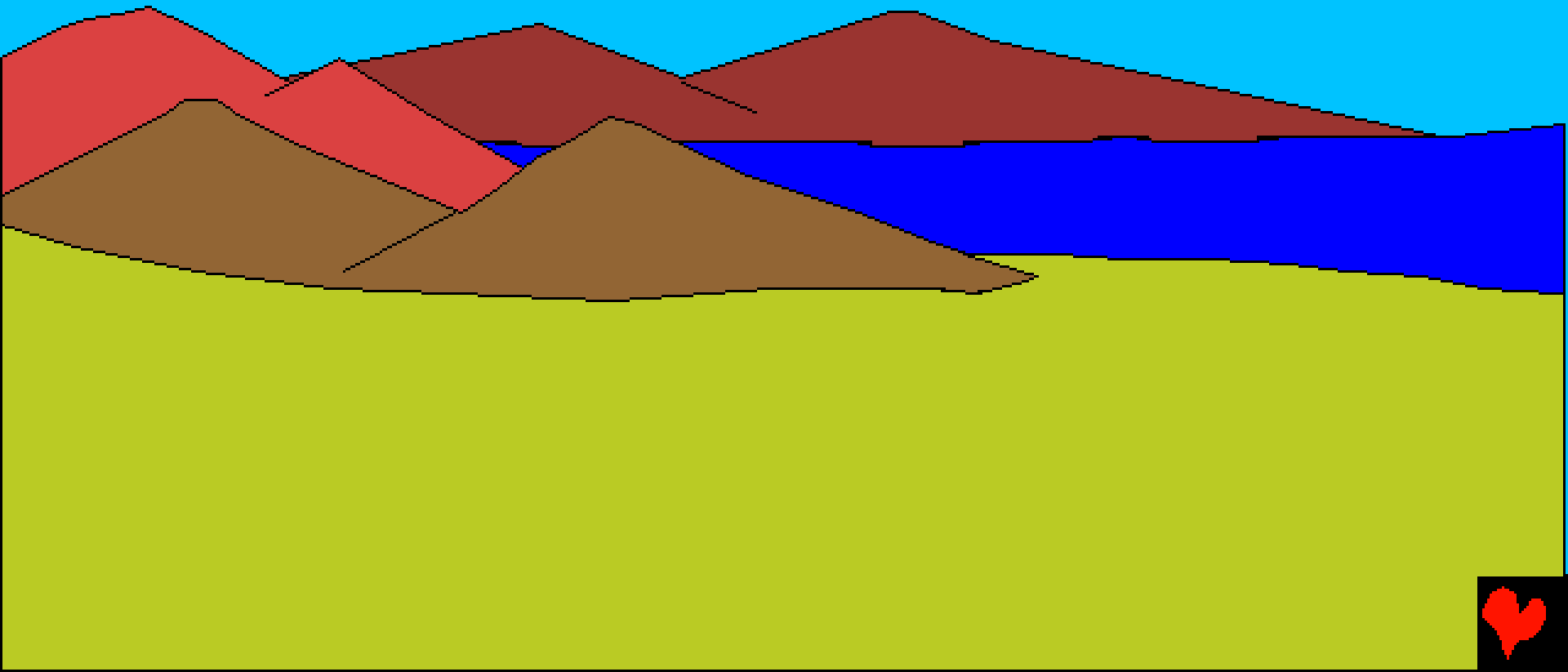
Ndipo dziko linalibe
maonekedwe alionse.
Ndipo mdima unali
pamwamba
pakuya.
Kenaka
Mulungu
anati.
"Pakhale
kuyela."



Ndipo kunayeradi. Mulungu anatcha kuyera kukhala usana ndipo mdima kukhala usiku. Ndipo panali madzulo ndi m'mawa tsiku loyamba.



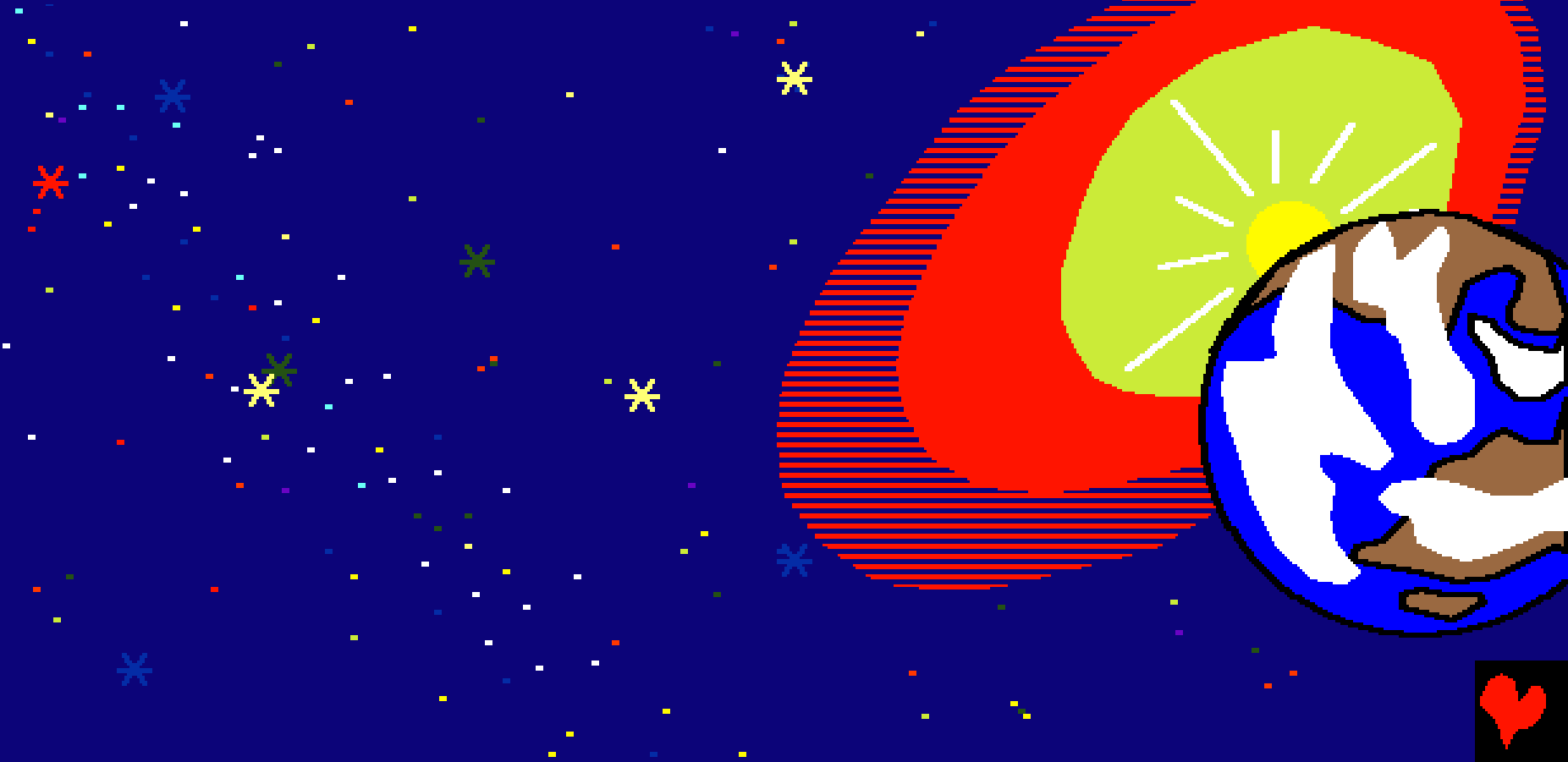
Tsiku la chiwiri, Mulungu adasonkanitsa madzi pamodzi. Patsiku lachitatu, Mulungu adati, "pakhale mtunda." Ndipo zinachitikadi.



Mulungu adalamula udzu ndi maluwa ndi mitengo
kumera pa dziko. Ndipo zinachitika.
Ndipo panali madzulo ndi
mmawa tsiku la
chitatu.



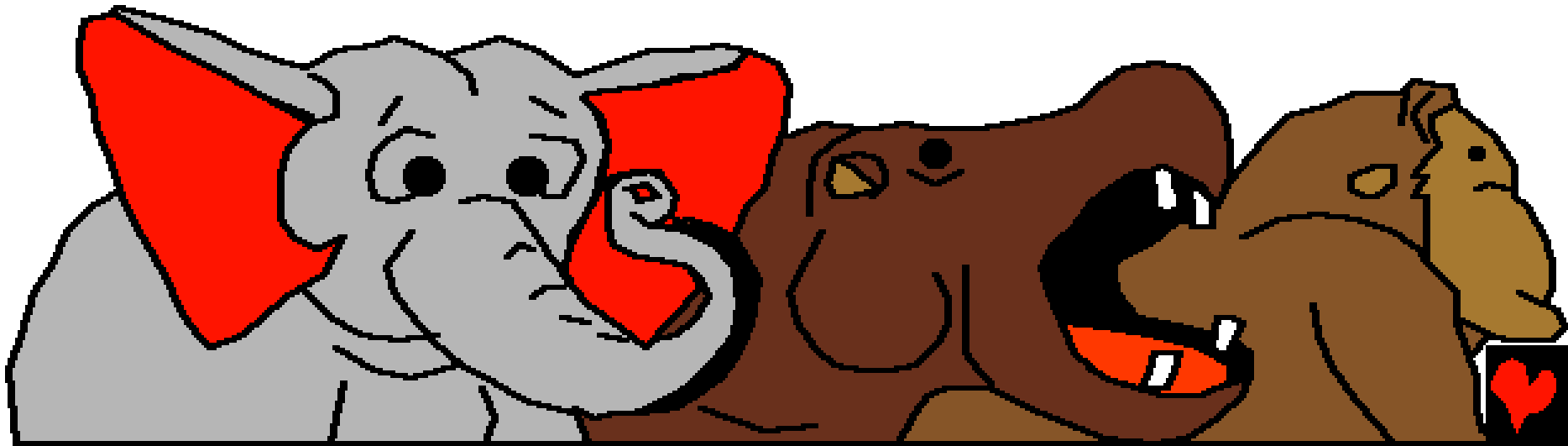
Ndipo Mulungu analenga dzuwa,
ndi mwezi, ndi nyenyezi zambiri
zoti palibe anakaziwerenga.
Ndipo madzulo ndi mmawa
ndiro tsiku lachinayi.



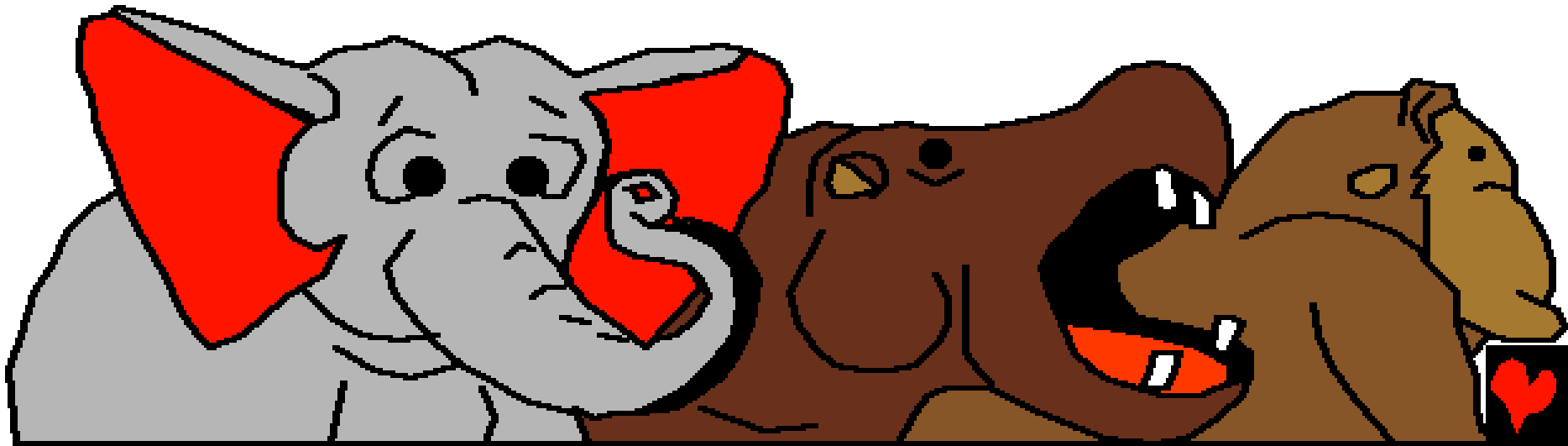
Zolengedwa za mnyanja ndi
somba ndi mbalame ndizo
mwa zina Mulungu anaikapo.
Tsiku la chisanu Mulungu
ndipo adalenga zinsomba
zazikulu ndi zoyenda yenda
zamoyo zochuluka m'madzi.
Mulungu analenga mtundu
uliwonse wa nsomba kuti
zidakwanire dziko lapansi
ndiponso mitundu ya mbalame
pa dziko ndi mnyanja ndi
mlengalenga. Ndipo panali
madzulo ndipo panali
m'mawa, tsiku la chinai.



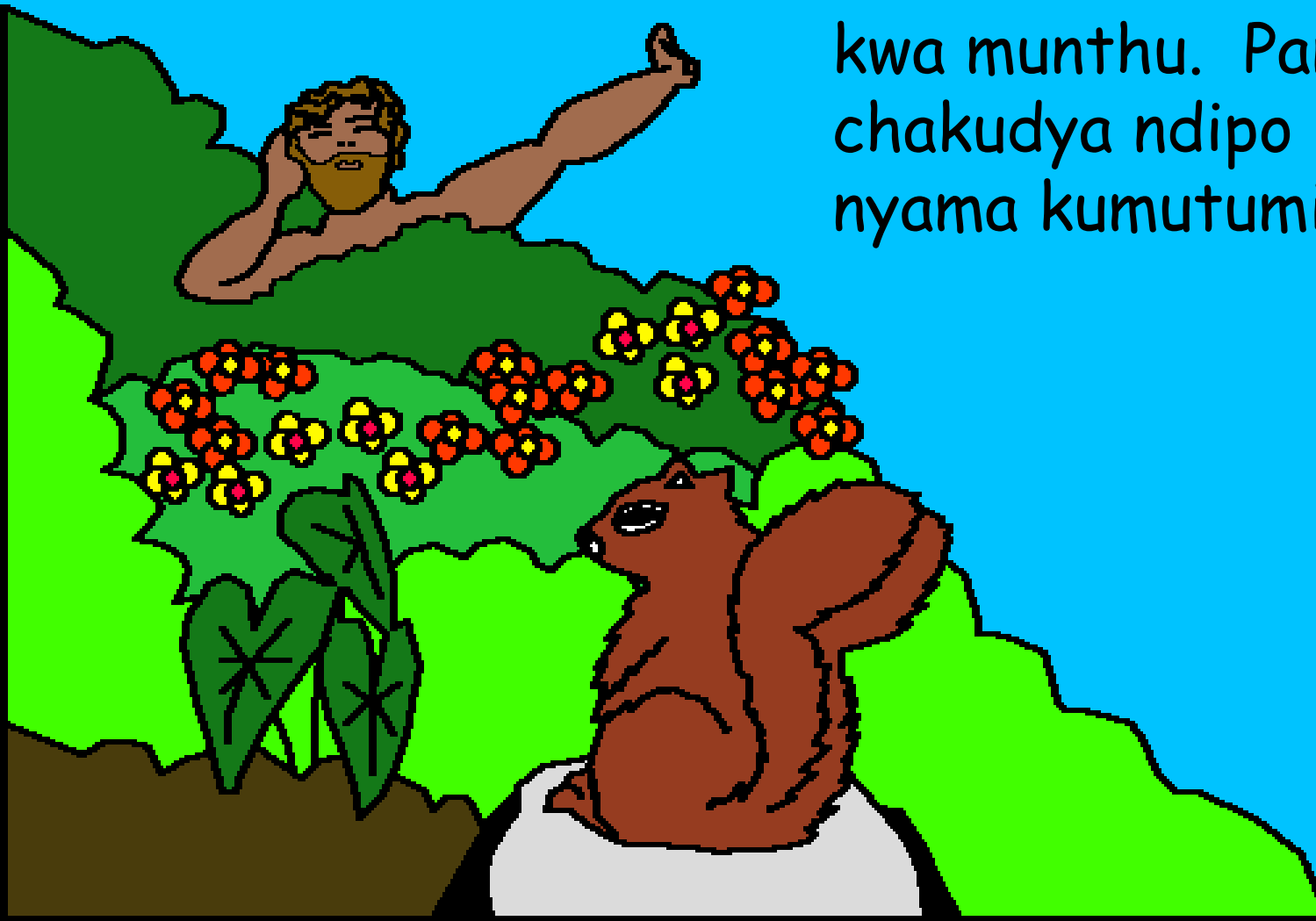
Ndipo patatha izi, Mulungu analankhulanso. Ndipo anati, "Dziko libweretse zolengedwa zamoyo ..." Ndi nyama zonse ndi zombe ndi abuluzi anakhala ndi moyo. Panalinso njomvu zogwedeza komanso anyani ndi n'gona.



Ndipo panali madzulo ndipo panali
m'mawa wa lachisanu.



Mulungu anapanga chinthu china tsiku lachisanu ndi chimodzi mwapaderadera. Zonse zinali zitakonzeka kwa munthu. Panali chakudya ndipo panali nyama kumutumikira iye.



Ndipo Mulungu anati, "Tipange munthu mchifaniziro chatu ndi mchikhalidwe chatu kuti alamulire padziko lapansi".

NDIPO MULUNGU
ANAPANGA MUNTHU
MUCHIFANIZIRO
CHAKE; NDI
MCHIFANIZIRO
CHAKE ANAPANGA
MUNTHU.



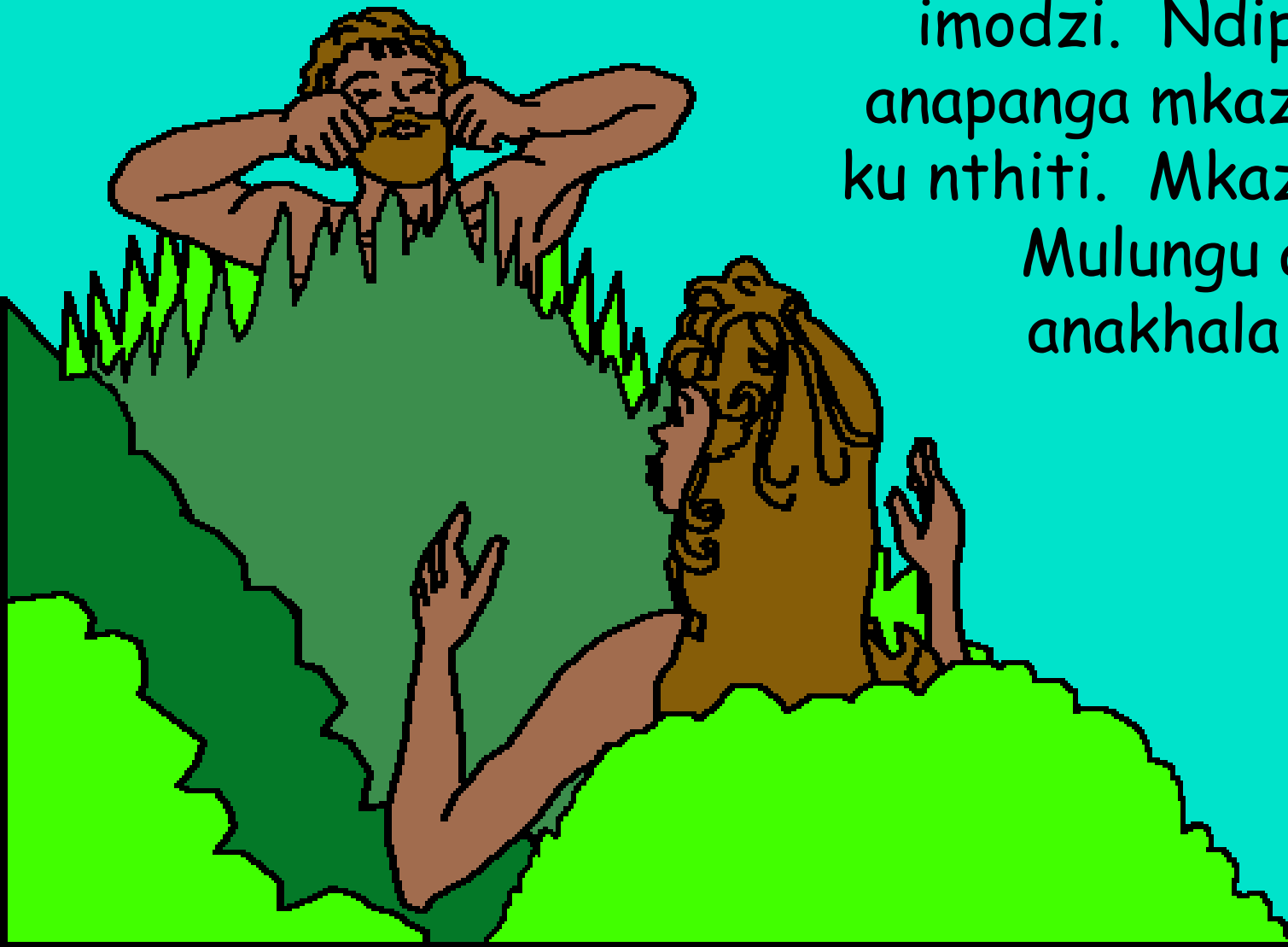
Mulungu
analankhula
ndi Adamu.
"Idya chimene
ufuna kuchokera
mmundamu. Koma
usadye chochokera
mumtengo wodziwitsa
zabwino ndi zoipa.
Ngati uzadya kuchokera
pamtengowo zedi
uzafa ndithu."



Ndipo Mulungu anati, "sikwabwino kuti munthu akhale yekha. Ndidzampangira womthangatira iye." Mulungu anabweretsa mbalame ndi zilombo kwa Adamu. Adamu anazitcha maina zonse. Mulungu anali wochenjera pakupanga izo. Komano panalibe weniweni mnzake wa Adamu.



Mulungu anapatsa tulo tofanato Adamu, ndikuchosa nthiti yake imodzi. Ndipo Mulungu anapanga mkazi kuchkela ku nthiti. Mkazi ameneyo Mulungu anampanga anakhala oyera kwa Adamu.



Mulungu anapanga zonse m'masiku asanu
ndi limodzi. Ndipo Mulungu anadalitsa
tsiku la chisanu ndi chiwiri ndi kukhala
lopumula. M'munda mwa yedeni Adam ndi
Eva mkazi wake anakhala ndi chisangalalo
chomvera Mulungu. Mulungu anali
Mbuye wawo, wobweretsa
zosowa zawo.



Paneme Mulungu anapanga zonse

Nthano yochokera mu mau a Mulungu,
Baibulo,

opezeka mu

Genesis 1-2

"Polowela pa mau anu pamapasa kuwala."
Masalimo 119:130



Mapeto



Nthano iyi yamBaibulo imakamba za ubwino wa Mulungu yemwe anatipanga ndipo akufuna kuti mumdziwe iye.

Mulungu amadziwa kuti tima chita zoipa, zimene zimachedwa chimo. Chilango cha uchimo ndi infa, koma Mulungu anatikonda kwambiri ndipo anatuma mwana wake yekha, Yesu, kuzatifela pamtanda ndi kunzuzika chifukwa cha machimo anu. Ndipo anaukansa kwa akufa na pita kumwamba! Ngati ukukhulupirira Yesu mupempheni akukhulukileni machimo anu, azakukhulukirani! Adzabwera kukhala nanu, ndipo muzakhala naye kunthawi zonse.

Ngati mukukhulupirira kuti izi ndizoona, nenani ichi kwa Mulungu: Ambuye Yesu, ndikhulupirira ndinu mwana wa Mulungu, ndipo munakhala munthu kundifera ine machimo yanga, ndipo mulinso ndi moyo. Chonde, lowani mmoyo mwanga ndikundi khulukukira machimo anga, kuti ndikhale ndi moyo watsopano, ndipo tsiku lina ndikakhale ndiinu muyaya. Ndithandizeni kukumverani ndi kukhala mwa inu ngati mwana wanu. Amen.

Welenga Baibulo ndi kuyankula ndi Mulungu matsiku onse!
Johane 3:16

