



Huyange Youngwanpawe i, "Kahta I shaha ngohlak yemei. Taokhei taowe Ite jamponglaakingne I phei shupu ja linglakei." Kahwange Wang awhalan hei yinmok nyoha ushei Adam dangte yahe pei.

19



Iye yeong juteih nahpu phei ling nangpeih. Huyangpoi wang awhalan hei yinmok lan ushei yome I te jamlak janehoi shupu ye tuo.

20



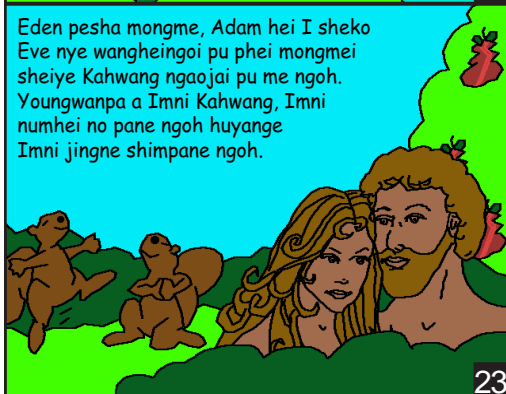
Kahwange Adam lipu kih-e shine tam. Shiye ngoh pu kahta mepu hampa waan ja yahyange, Kahwange Sheko Adam hampa waan metang Iye sheko ja yaowe ngai. Kahwange ling pu sheko ja Adam jingne yeonge khakshu pu jampu nyu jane ngoh.

21



Kahwange khongkum pu nyih wok me ling. Taophei me Kahwange nyih nyit shepu nyih moiman e tam huyange hatao nyih a toloimei pu nyihne ming.

22



Eden pesha mongme, Adam hei I sheko Eve nye wangheingoi pu phei mongmei sheiye Kahwang ngaojai pu me ngoh. Youngwanpa a Imni Kahwang, Imni numhei no pane ngoh huyange Imni jingne shimpane ngoh.

23

Aope Kahwange khongkumpu linggai
Hatao punago-a Kahwang Ujao laitep mepu ngohngang. (Bible Pungao)

Hatao tuo pu a
Kahtamyenghan 1-2

"Nang ngaolan-e wangnagi pha nang."
Tuowelaihem 119:130



Aope Kahwange khongkumpu linggai

Nyanpupa Edward Hughes
Lepnetam pupa Akhei (Gangkhei-Konyak)
Byron Unger; Lazarus

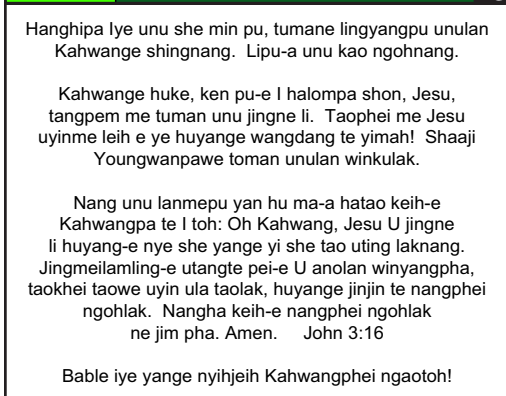
Akhei Gangkhei Konyak
Paune tampupa Bob Davies; Tammy S.

Pungao 1 mepu 60

M1914.org

Bible for Children, PO Box 3, Winnipeg MB R3C 2G1 Canada

License: Hatao pungao lai nange photo copy hei print ne ningpu ok lak, huyangpoi hatao-a yao lakjingne yeji (Yaolak jingne teannang).

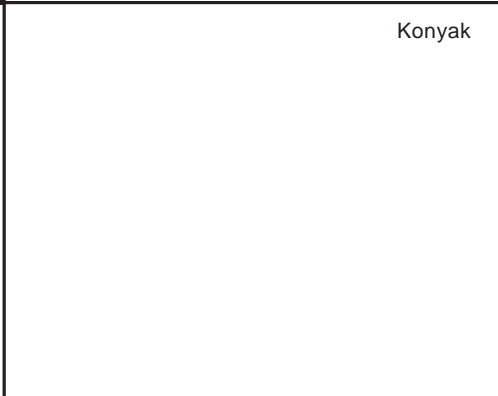


Hanghipa Iye unu she min pu, tumane lingyangpu unulan Kahwange shingngang. Lipu-a unu kao ngohngang.

Kahwange huke, ken pu-e I halompa shon, Jesu, tangpem me tuman unu jingne li. Taophei me Jesu uyinme leih e ye huyange wangdang te yimah! Shaaji Youngwanpawe toman unulan winkulak.

Nang unu lanmepu yan hu ma-a hatao keih-e Kahwangpa te I toh: Oh Kahwang, Jesu U jingne li huyang-e nye she yange yi she tao uting laknang. Jingmeilaming-e utangte pei-e U anolan winyangpha, taokhei taowe uyin ula taolak, huyange jinjin te nangphei ngohlak. Nangha keih-e nangphei ngohlak ne jim pha. Amen. John 3:16

Bable iye yange nyihjeih Kahwangphei ngaotoh!



Konyak

Tuman aohiye lingpu shi? Hangku kahtanyoha shangshih wang, Ujaolai, Kahwang ngao lan kaiye tumante i nang. Hipak maawe linteki, uwangne Kahwange kahta ling, huyange ite Adam she min.

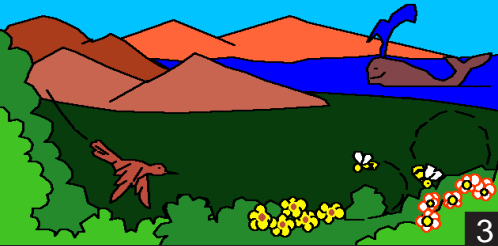
Kahwange kahtaokme pu kahmuk yahe Adam ling. Aope Kahwange laohi yahpeih, Adamwe laohi ne wang huyange kahta uyin ne ngai. Adam-e yashanyali mei pu Eden she minpu pasha ja tuo.



1

2

Kahwange Adam ling shao me, yashanyali mei pu kahtoknyo shemeiyaoma pu toilum pheii maa yange ngoh.



3

Yaphenjapheime ja Kahwange kahdangkahje huyange meipuwang phom lan, upimeii pu jupinglan, huyange yeong tao pu pee lan, uyangphei pu awhalan huyange zaah tai lan, yeonge young pu yin muklan hei nyanshinpu khaiwai lan ling.



Ane o, ngoh pu lili ushei a Kahwange ling.

4

Ukong wngame Kahwage ushei lingshao me Kahwang tok te kaiye hang o ulam yenangpe ngoh. Kahta jeyah, nyoijing or toilam lili hang-o ye nangpe ngoh. Ukieng. Wangnyak o yenang huyange wangngai-o yenang. Atok hei umai o yenang. Menyih hei ngainyih she ipu o yenang. Ukem yenangpu Kahwang hei ngohyangki. Taophei me Kahwange toilingne wang.



5

Uwangne, Kahwange wangphang huyange kahtoknyu ling.

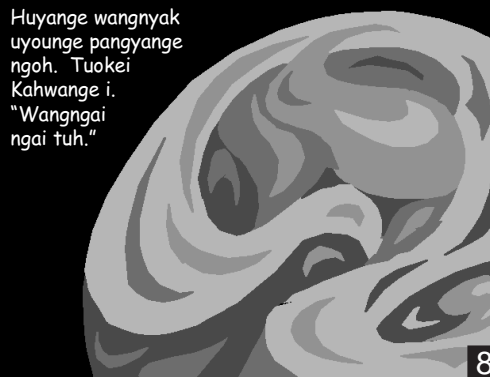
6

Huyange kahtoknyuwa hango ulam yenangpe ngoh.



7

Huyange wangnyak uyoungne pangyange ngoh. Tuokei Kahwange i. "Wangngai ngai tuh."



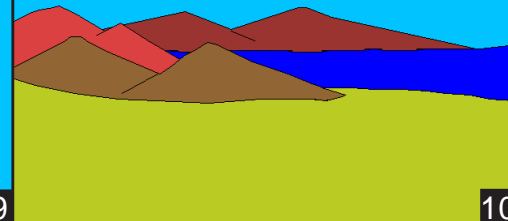
8

Huyange tuome wangngai ngai. Kahwange wangngai te Nyih she nyik huyange wangnyak te Iye Nyak she nyik. Huyange yaning linne tai huyange napning ngai, tuopa a uwangpa nyih ne ming.



9

Nyih ni shepu nyih, Kahwange yengchingme pu ying ngaine tam, Huyange Kahwange khwangmong linge ngai. Nyih lum shepu nyih, Kahwange, "Kahtok wan ngaine tamtoh." Huyange hatao keihe ngai.



10

Kahwange kahtokke phumha weangyong ngai tuh, ushoi hei uyoung pu pee lili lan ngai ne ngaokingpha.



11

Huyange hatao kih-e ngai. Napning huyange yaning, hataowa nyih lum shepupa nyih ne ngoh.

Huyange Kahwange wanghe hei leatnyu, huyange Iye une-o iyne ye kumpu shanhalan-o ling. Yaning linne tai napning pei, hatuowa peli shepupa nyih ne ngoh.



12

Taopheime Kahwange yengjing yinmuklan hei nyah huyange awhalan-o ling. Nyih nga shepu nyih Iye nyah uyounglan hei ushoipu lili, uya luulingpu lan hei hongli mongmei pu wang awhalan ling yangki. Kahwange hongli mongmei ngoh lakne ying me ulam maa pu nyahlan hei kahtok nyo me wang awhalan linge tam. Huyange yaning linne tai huyange napning ngai; huyange hauowa nga shepupa nyih ne ngoh.



13

Huyange Kahwange ngaophawe i, "Kahtoknyu we yin yinmok yoi ulam lili tampu yinmok, kahtok me lih-e kempu, huyange phao yinmok yoi ulam lili ngai tuh." Tuo me Meinyo lan hei nan yengai pu yengjing yuh lan. Wonheiwangpu Shemeilan hei shangshih kei pu Khungkei lan. Yongyat lan hei omtuo yuhyat lan. Meishe lan hei yinmok khonglan: Yinmok ulam lili Kahwange tao nyih ling yangki. Huyange wangnyak hei wangngai ngoh, hauowa wok shepupa nyih ne ngoh.



14

Nyihwok shepu nyih Kahwange yoiyoi she pu alao pheii she meipu toilamling. Sha-a Khongkempu lan kahta jingne tum. Kahtokme hah heiying lan huyange Iye yumlakne yinmok lan ngohyangki.



15

Tuophei me Kahwange i, "Teman e kahta teman kih-e, temanlepu me lingham; huyange yengching nyah tangme huyange wang awhalan tangme, huyange ching yinmok tangme huyange kahtoknyu ushei tangme huyange kahtok me lih-e kempu ushei tangme iman nokpu ne ming tuh" ...



16

... HUYANGE KAHWANGE YOII KIH-E KAHTA LINGE NGAI, KAHWANG LEPU ME IYE I NGAINNE TAM ...



17

Kahwange Adam te i. "Pesha me pu nange hah hupu lili hahtoh. Hapoi pesha mepu umeang umei shingpu pee mepu nage tahhah. hangjingne nage aope nyih tuopa mepu hahlakei nang lilak."



18