

Baibulo na anamwani
Wovelhelha

Kuyambiwa kwa
maviho a muthuh



Wolembiwa ni: Edward Hughes

Umothonyeha ni: Byron Unger; Lazarus

Omukusa ni: M. Maillot; Tammy S.

Wotaphulhela ni: John Kaliwo

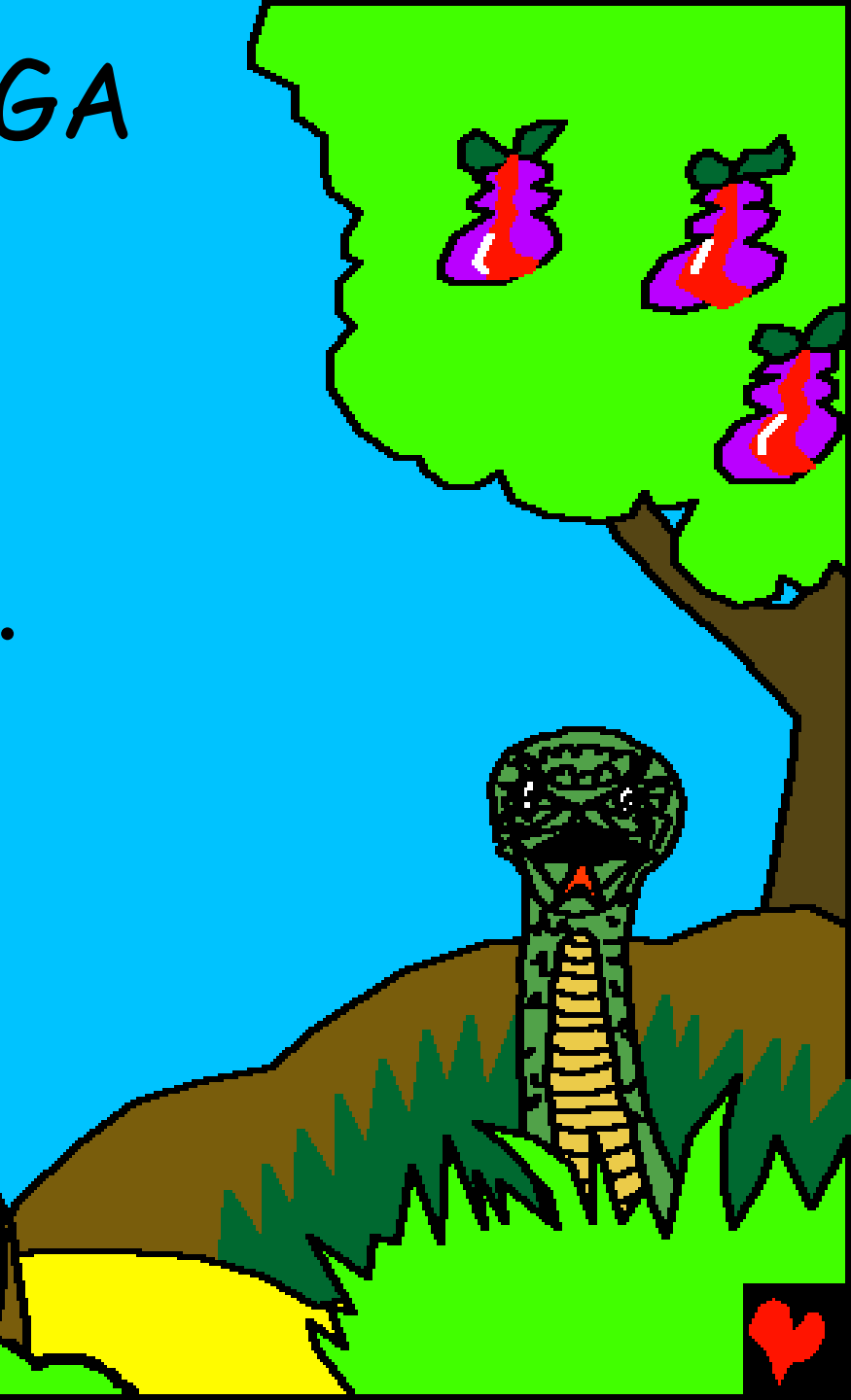
Wokumiha ni: Bible for Children
www.M1914.org

©2017 Bible for Children, Inc.

Liasense: Nywoo mokalano ehaki yokusha ni
oluwela sohimuwa seya wohimphakela nakoso.



MULUKUH WAPANGA
ERIONSE! Vamene
Mulukuh wapangaka
muthuh
ohamba.




Adam ni Mwiriye
Hava wari ohakalalala,
nikuuwela Mulukuh,
ophiyera siku
limodha ...




"Mulukuh
wahulelhani
kuti muhichelhe
ya muthengo
uliwonse?" enowo
yamukuva Hava.





"Tinorocho
zamungoni
yothehne koma
umodha" Hava walhotaka
za muthekhoniwu
tinorokhwa
"Mwakhwelhe
iyayi".





"Munorophwana
ni Mulukuh." Hava
wakhumbelha olha.
Zamutekhoh.



Hava
wanyekewa ni
enowa ocha
chipaso cha
mutekhowo.



Vamene Hava wahiwelha
Mulukuh, wamwinya
Adam chipatso
cha mutekho
wakaniziwa
kuti
achekeh.





Vamene
Adab ni Hava
anachimwelha Mulukuh,
anadhiwelha kuti ari osawara.





Apangelha
mmathapa amutekho
mkuwara, mathamakela
muhakani wobisala.



Mudhuloh orirya, Mulukuh
wawaka m'matah mwa
Edeni. Mulukuh adhiwera
kuchimwa kwa Adam ni
Hava. Adam
wamukanelha
Hava.



Hava wakakanelha
enowa. Mulukuh
walotaka, "Enowa
niyotembereriwa.
Mwari unorovoriwa
voyara."



"Adam chifukwa
wokichimwelha, ethata
yatemberelidwa ni mika
ni mithula. Unorocho
thuku lokhumela
vankhopeni
vako."



Mulukuh wathakisa
Adam ni hava m'matah
mwa Edeni kambiwa
achimwilha, ...



... ahiyana
ni Mulukuh
wovaha
moyo!





Mulukuh wapangaka
mpeni wa munlho
wothakesa
Adam ni
Hava.



Mulukuh ampeangelha
Adam ni Hava
chikopani
cha enama
wawariha.





Mulukuh akusa
chikopani
okhumelha
uwi?

Anamwani ayariwa kwa Adam ni Hava. Mwana ohamba mdhinaye Kaini, mwana wa piri Abele.



Kaini warhi wokakathah ethaya
pamene Abele warhi wochiha nkhosa.



Siku limodha Kaini watukhulah
mathapa kumwimnya Mulukuh
(nsembe).



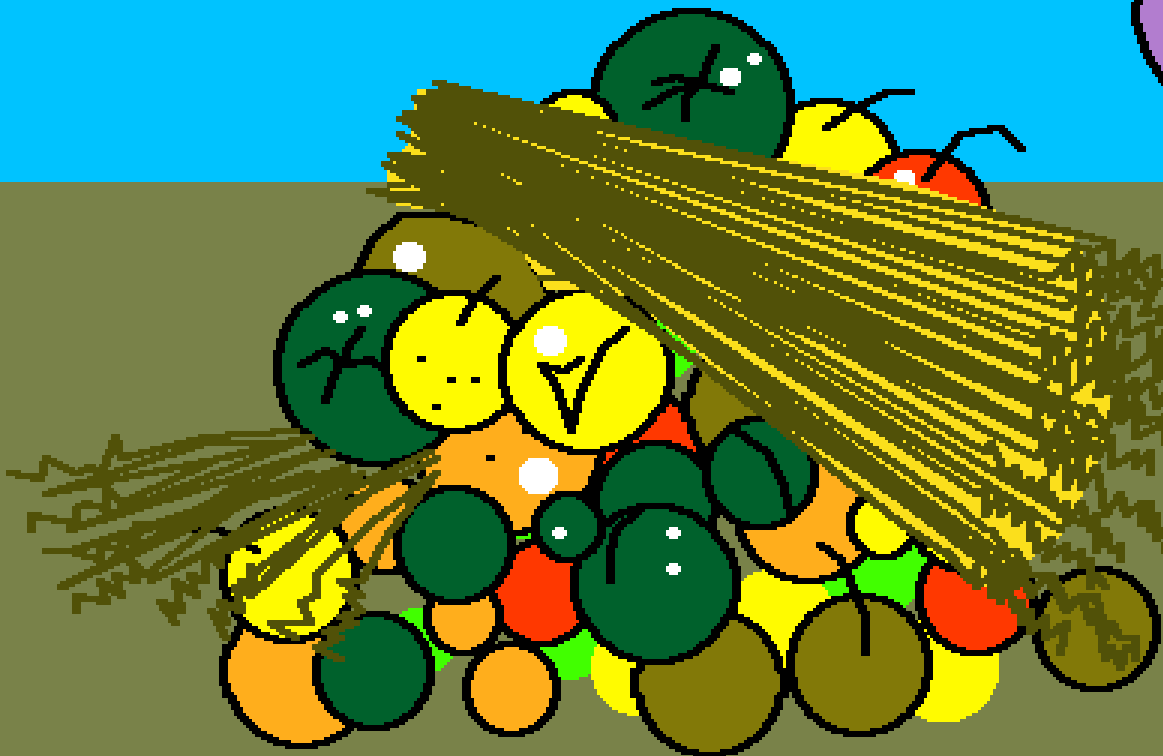
Vamene Abele watukhula mwana wa nkhosa kumuvaha Mulukuh.



Mulukuh wahihakalalani
mathapa a Kaini. Kaini
wamukwiraka Mulukuh.



Mulukuh walota ni Kaini,
"Wahikhalha wapanga
zinthu zaphama
wahiakheliwa?"



Mkwiyo wa Kaini warhi
chikhalire. Kaini wakakatha
Abele m'baliwa nipaka
wotatheya!



Mulukuh wolotah ndi Kaini,
"m'baliwah Abele aliwuwi?"
"Kaini wanama.



Kokhala womuwehererha nibe
anaya?" Mulukuh wamulakah
Kaini akhale woyetahyetah
Khinadhiwelha.



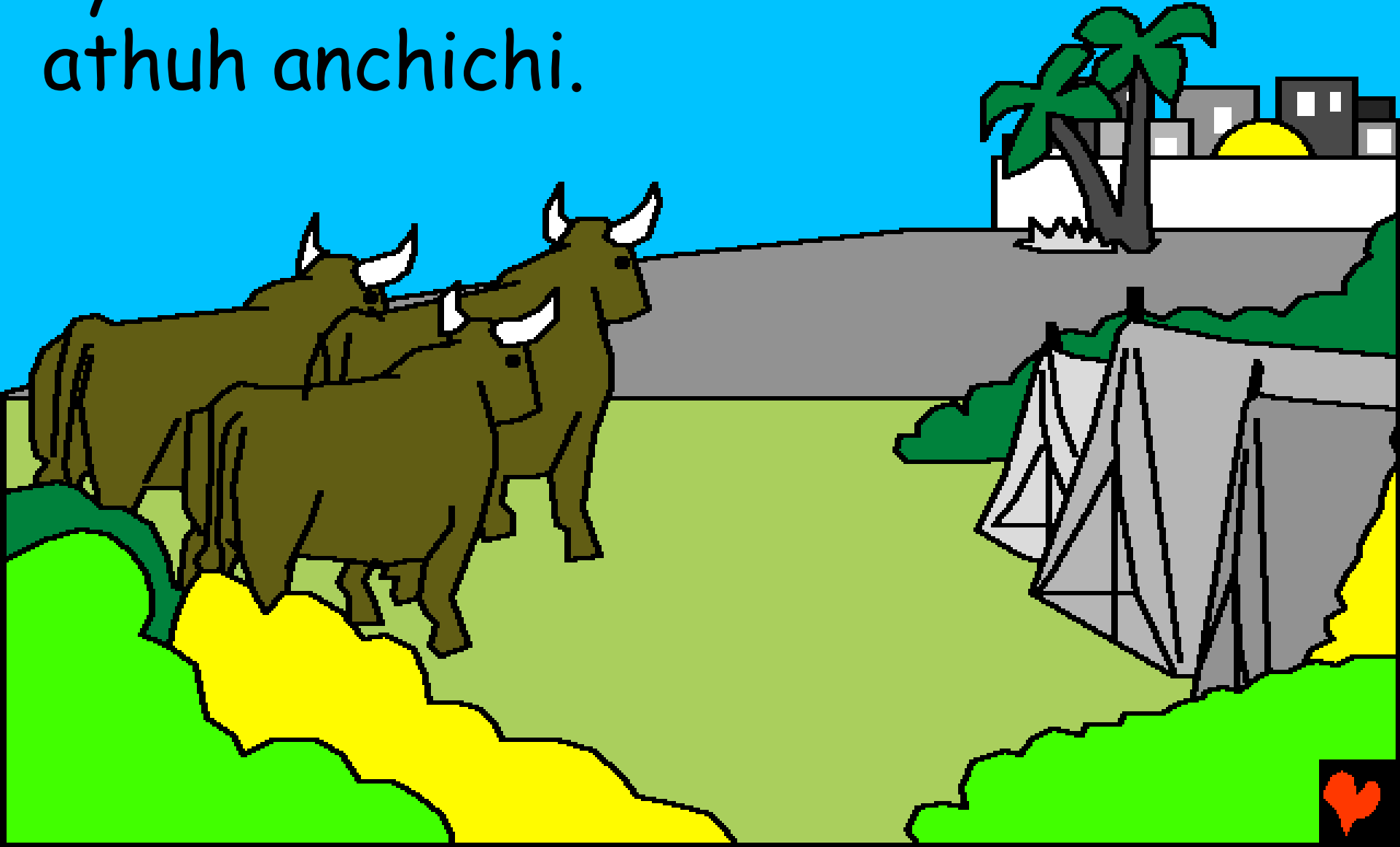
Kainini wavira worekamirha
vamithohni va Mulukuh. Kaini
wathehriwah ni mwana wa
Adam ni Hava



Ayarha
anamwani awo.



Kaini na dhulaye
ayarana nakhala
athuh anchichi.



Banja la Adam ni Hava lakhala
ni athu achinchi. Athuh
m'masiku ayo yarikukha
athawi yorekama.



Vamene mwaniwa Seti wamuyara,
Hava walotah 'Mulukuh
kivaheni seti akhaleh wovira
m'malo wma Abele' ...



... Seti wari muthuh wa Mulukuh
wakhhalalika zaka 912 nayarah
anamwani anchichi.



Mu elhapo, athuh
yaakhala ni epewe.



Vomalihelha, Mulukuh
waganiza zoononga
elhapo opweserelani
athuh ...



... Enama ni mbalame
zothene.



Mulukuh wadandaula
kambiwa alheka elapo
ya vathih.



Muthuh m'modha warhi
waphama m'mithohni
mwa Mulukuh ...



Muthuh olha
yari Nowa.



Wovenyera kwa Seti,
Nowa wari muthuh ohera
murima. Nowaaketakah
ni Mulukuh.



Wa ulelhaka anamwani aye
ohiwera Mulukuh. Mulukuh
walingalira zomuveha
muteko
Nowa!



Kuyambiwa kwa maviho a muthuh

Sohimua iya sa maso a Mulukuh, Baibulo,

emphwanyaneya

Genesis 3 - 6

"Ovolhowa wa mau awinyu anawana
ooneya." Masalimo 119:130



Omaliha



Masu ala ambaibulo
anilela wi Mulukuh ahu oweriasha
onipathunxe onthuna wela nimusueli.

Mulukuh osuela wer la hyo ninapaka itu
sotakala, sinitaniwa itampi. Emphwanhaho
wasoteka okwa, wayeyo Mulukuh onisiveleliwa
ninhuo siso omuluma muwanawe mmosalo, Yesu,
wera okwe vamuikimanho ni othipihe
sotekasaho. Yesu ahiwa mulaponi ni othikela
owanhawe oparaiso. Yuo muamukupali Yesu ni
muamvekela wira oleveleleni sothekasanho,
yowo onimolevelelani. Yowo onowa okale ninhuo
olelo, nyuo munokala niyowo mpaka kalai.



Nyuo muakupali wi eyo
ekaikai, mmulele Mulukwaho:

Osiveleya Yesu, miyo kinikupali weran yuwo
Mulukuh, muhipanka ntoko mutho wira mukwe
muaha wa sothekasaka, vano nyuo muri
mukumito. Shonthe, mvolowe muekuminimuaka
ni mukilevelele sothekasaka, wira myo kikalane
ekumi esa, nihuko nimoso kirowe kikale ninyuo
mpakano kalai. Mukikavihere wira ketheleke ni
kikaleke wanyuwo ntoko muaninyo. Amem

Musome Baibulo ni mulavule ni Mulukuh
mahiko otene! Yohani 3:16

