



Ba 7 ngaluo tö aefa da'ö, i'ila Noakhi wa no oköli danö me lö sa'ae mangawuli khönia marafadi andrö.

19



Ba iombakha'ö sa'ae Lowalangi khö Noakhi wa no tola iröi göfa andrö. Noakhi ba i'efa'ö fefu gurifö si fao khönia.

20



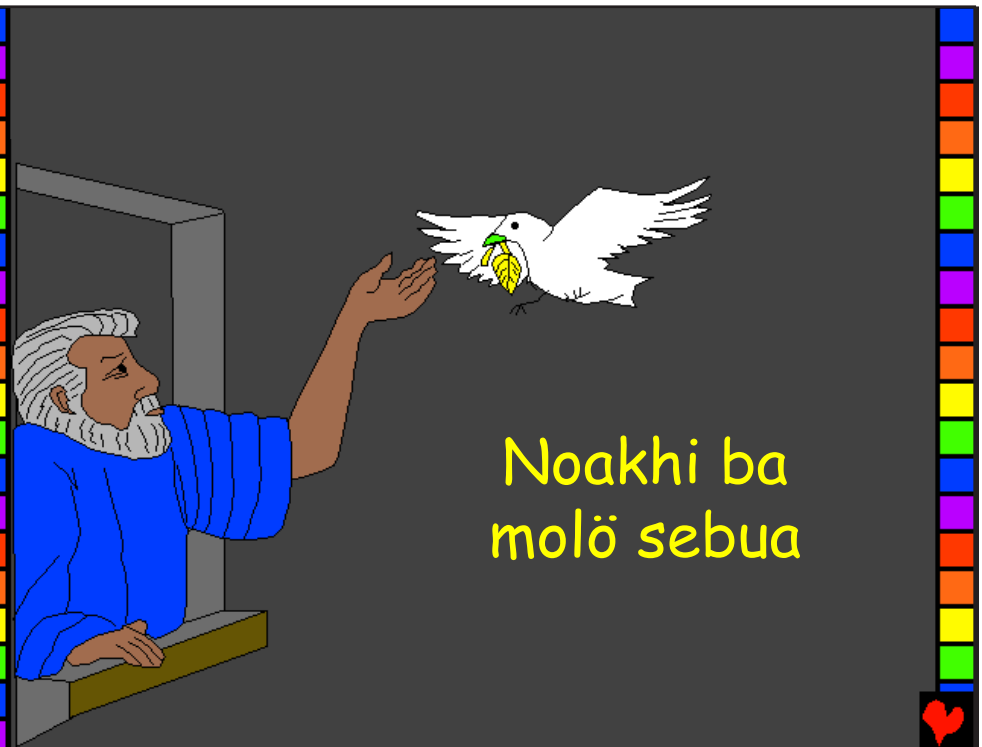
Ba i'andrö saohagölö Noakhi. Ba ifasindro sambua naha wame'e sumange khö börrö meno te'orifi ia ba molö sebua andrö.

Ba ifa'ema bu'u li-Nia Lowalangi khö Noakhi. Wa lö sa'ae ibe'e molö sebua ba wohuku niha gulidanö.

Ibe'e tandra dumi ba lawuo Lowalangi sitobali tandra fawu'usa li-Nia andrö.

21

22



# Noakhi ba molö sebua



Labörögö sa'ae wa'auri sibohou ndra Noakhi aefa molö sebua andrö. Ba nga'ötönia samo'ösi gulidanö. Fefu soi mbanua si meluo da'ö ba no moroi ba nga'ötö Noakhi.

23

Noakhi ba molö sebua  
Sambua nidunö'dunö sitobali goroiisa Lowalangi

Tesondra ba  
I Moze 6 - 10

"Famahaö Lowalangi andrö ba ibe'e haga."  
Sura Sinunö 119:130

Ni'sura: Edward Hughes  
Ni'amaedolagö: Byron Unger; Lazarus

Ni'fo'eluha: Dorkas Orienti Daeli  
Ni': M. Maillot; Tammy S.

Nidunö'dunö i'otarai 3 irugi 60

M1914.org

Bible for Children, PO Box 3, Winnipeg MB R3C 2G1 Canada

Lisensi: So sitobali dana (hak) ba wango'oya'ö nidunö'dunö andre asala lö lafamawa.

Ba l'ila Lowalangi gofu hadia ia si lö sökhi nifaluada nifotönia horö. Ba huku horo andrö ba fa'amate.

Ba Lowalangi l'omasiö sibal ita irege Ifatenge nonoNia andrö Yesu ba wa'amate ba döla röfa ba wamu'a horöda niha ba gulidanö andre. Ba maoso la ba möi yawa ba zorugo! la da'a ba l'efa'ö horöu Lowalangi.

Ba na omasi'ö aefa ba huku horö, ba ömane khö Yesu: Khö Lowalangi, ya'o mamati wa Yesu no mate ba khögu ba ia da'e ba auri la. Edöna te'asogo la ba wa'aurigu ba efa'o fefu horögu, irege usöndra wa'auri sibohou ia da'e, sifaö khö Nama ba zi lö aetu. Yohane 3:16

**La baso buku daroma li Lowalangi andrö ba ena'ö so inötö fahuhuo khö-Nia sero'ma'ökhö!**

Nepali



Noakhi andrö ba niha samosumange Lowalangi. Ba ha wa'ato niha bö'ö, lö la'o'ö goroiisa Lowalangi.

Samuza maökhö T'ombakha'ö Lowalangi si tokea dödo niha, imane: "wa Ufakiko gulidanö da'a," Ba imane khö Noakhi, "Ha ngambatöu niorifigu".

1

2

Ba ifangelama Noakhi Lowalangi, wa alua molö sebua ba anöno golidanö.



3

T'oro'iö Lowalangi khö Noakhi: "Fazökhi sambua göfa sitobönö nahia si sambua omo khöu, awö gurifö si fao khöu." Ba T'ombakha'ö Lowalangi khö Noakhi, ngawalö hadia ia zatulö. Ba oya sibai halöwö Noakhi.



4

Ba ato niha sangoaya Noakhi ba manofunofu ira hadia geluaha wa ifazökhi göfa Noakhi.



5

Ba lö tebato Noakhi wamazokhi göfa andrö.

Baero da'ö ba idunöduhö ba niha sato Lowalangi andrö Noakhi.



6

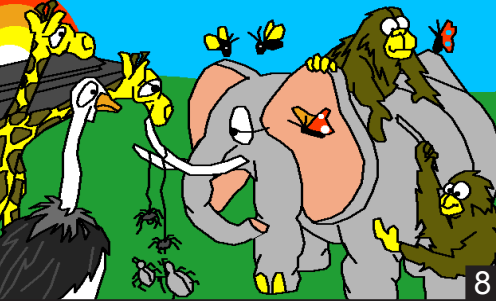
Ba lö lafondrongo linia.

Ba afönu wamati Noakhi andrö. Hewa'ae lökko sabölö ba faduhu dädönia khö Lowalangi. Ba no awai göfa andrö ba tefo'ösi ngawalö soguna.



7

Ba mö möi bakha gurifö. So fitu ngawalö gurifö, dua geu sambalö, he fofu sebua ba side'ide möi bakha ba göfa andrö.



8

Ba ato siao zangoaya Noakhi, me iohu ba nowo gurifö andrö.



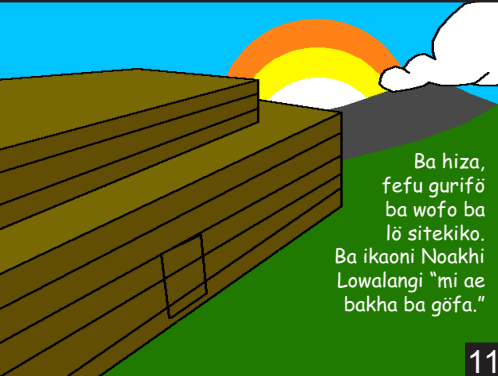
9

Ba lö tebato ira wolau horö ba wolawa Lowalangi. Ba lö göi la'andrö ena'ö möi yawa ba göfa andrö.



10

"Ya'ugö ba ngambatöu,"



11

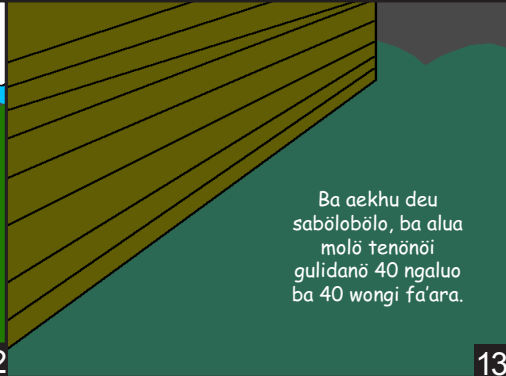
Ba hiza, fefu gurifö ba wofu ba lö sitekiko. Ba ikaoni Noakhi Lowalangi "mi ae bakha ba göfa."

Noakhi ba fo'omonia ba da tölu nononia ba numönönia göi we'amöi bakha ba göfa andrö. Ba aefa da'ö Iduhö bawandruhö göfa andrö khöra Lowalangi.



16

Ba aekhu deu sabölöbölö, ba alua molö tenöni golidanö 40 ngaluo ba 40 wongi fa'ara.



13

Ba alua molö he ba mbanua sebua ba he göi mbanua side'ide, simanö göi tobini hili börö molö. Ba fefu saliwaliwa so noso oi mate.



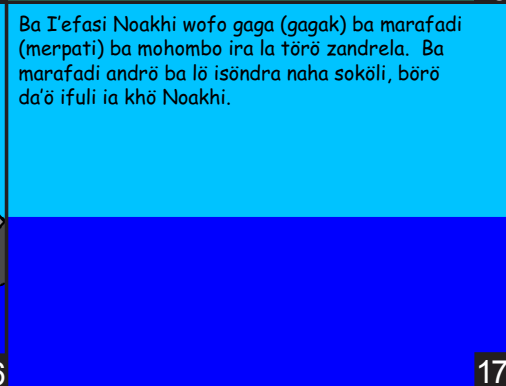
14

Ba me itugu tedou wa'alawa nidanö andrö, ba molaya'laya göfa yawa nidanö. Bakha göfa ba ogömi ba mö bade oi so wa'atä'u. Ba hiza'i göfa andrö no tobali lumö ndra Noakhi.



15

Ba me no aefa 5 wa'ä, Ifatörö nangi tandra wa molökhö Lowalangi, irege göfa andrö irugi manö hili ba Garafa (Arafat). Ba so mano Noakhi 40 ngaluo bakha ba göfa andrö me no alö nidanö andrö.



17

Ba T'efasi Noakhi wofu gaga (gagak) ba marafadi (merpati) ba mohombo ira la törö zandrela. Ba marafadi andrö ba lö isöndra naha soköli, börö da'ö ifuli ia khö Noakhi.



18

7 ngaluo aefa da'ö, itandraigö zui Noakhi. Ba mangawuli marafadi andrö ba so ba mbawania bulu geu zaitu (daun Zaitun).