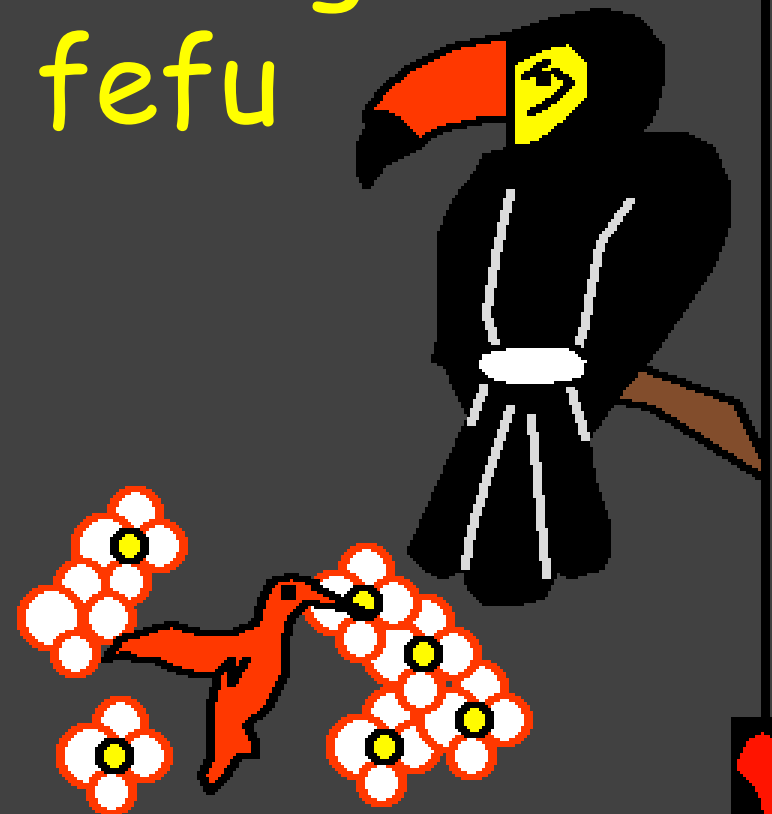
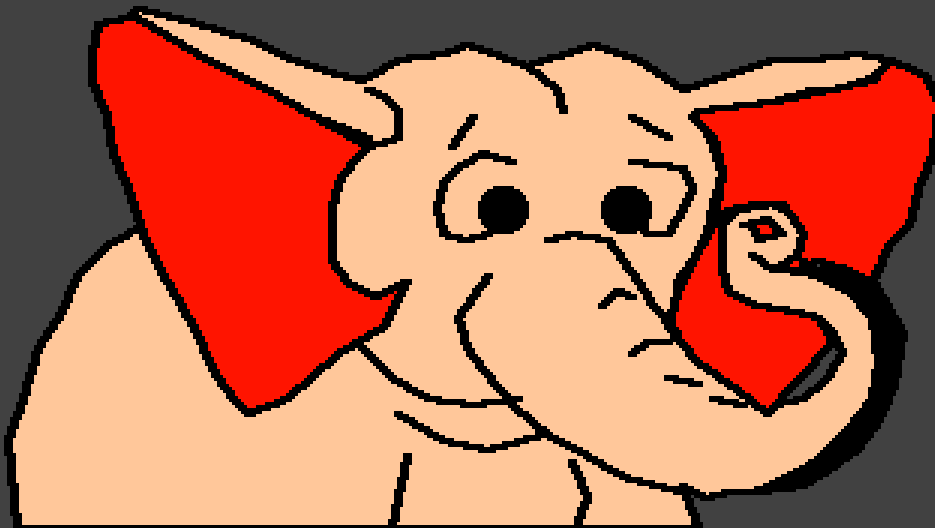


Buku Taroma li Lowalangi
(Ni'amoni'ö) ba ndraono
Ni'fa'aso

Ba mböröta me Lowalangi
andrö I'fazökhi fefu
hadia ia



Ni'sura: Edward Hughes

Ni'amaedolagö: Byron Unger; Lazarus

Ni': Bob Davies; Tammy S.

Ni'fo'eluha: Dorkas Orienti Daeli

Ni': Bible for Children
www.M1914.org

©2010 Bible for Children, Inc.

Lisensi: So sitobali dana (hak) ba wango'oya'ö
nidunö'dunö andre asala lö lafamawa.



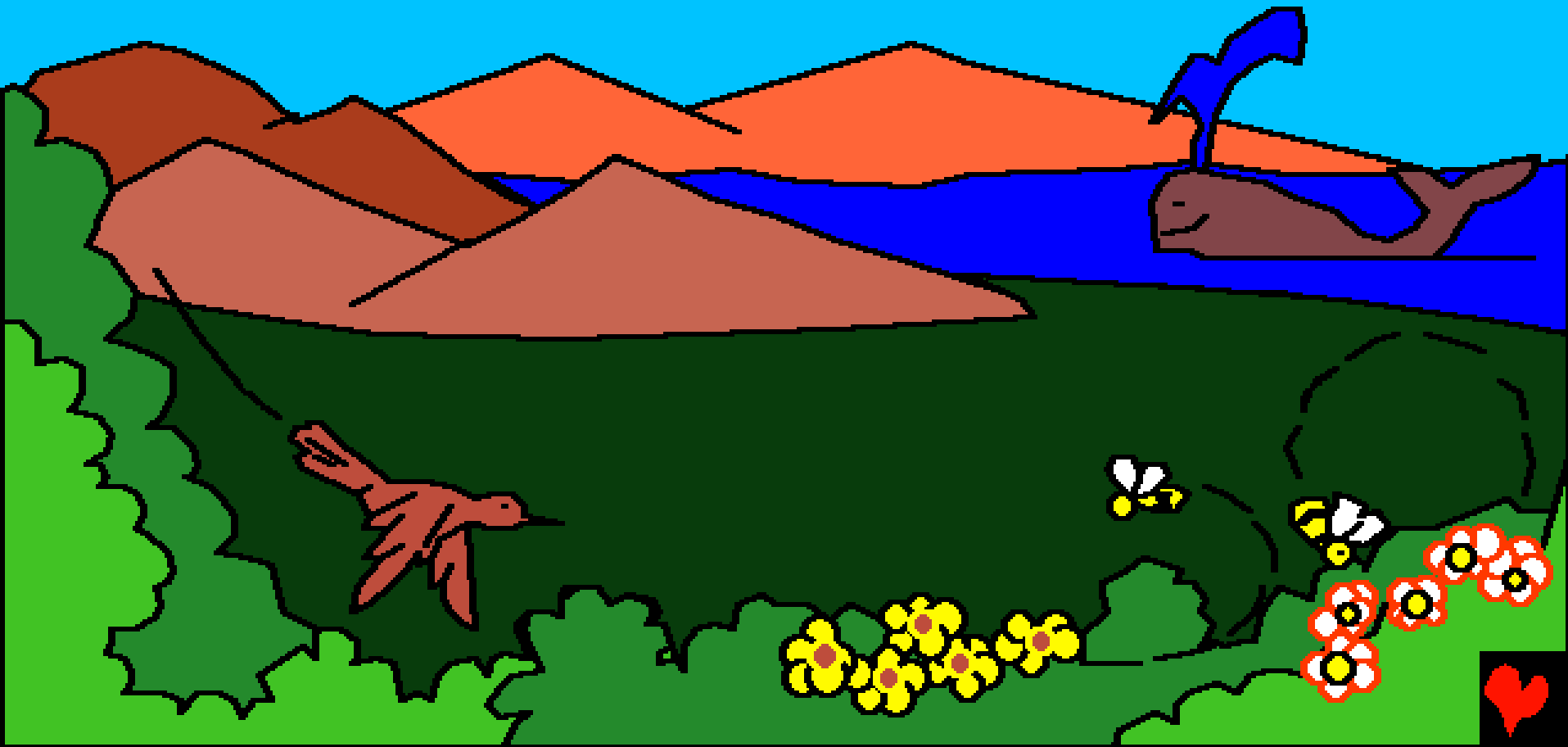
Haniha zamazökhi niha? Ba mbuku Ni'amoni'ö ba no goroisa Lowalangi da'ö ba te'ombakha'ö sibai khöda he'iwisa famobörö wamazökhi mbosi niha andrö. Ba mböröta, niha ni'fazökhi Lowalangi andrö tebe'e döinia Gadamo.



I'fazökhi niha andrö Lowalangi moroi ba gawu'gawu
ba danö. Ba me I'wuwusi hanu'hanu-Nia Lowalangi ba
auri Gadamo andrö. Ba i'ila wa ba kabu si sökhi
sibai so ia Gadamo, yaia ba kabu Gedena.



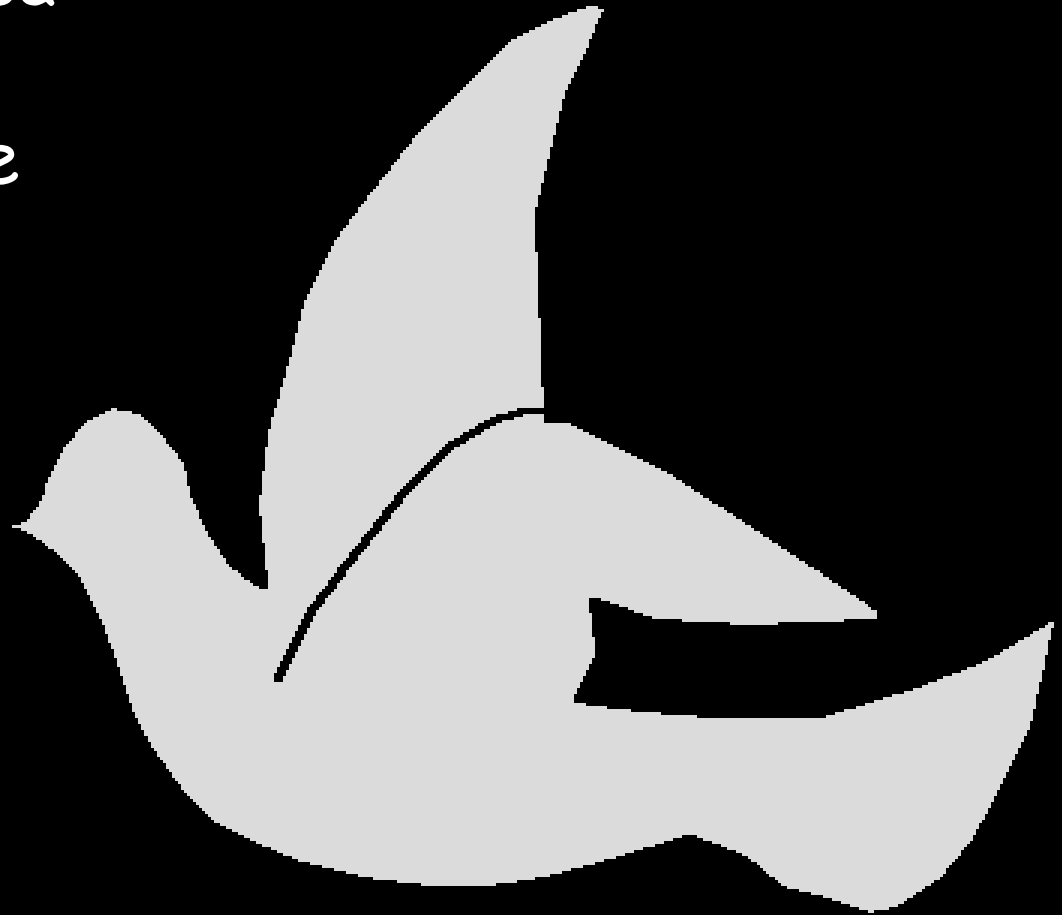
Me lö nasa mufazökhi Lowalangi andrö Gadamo, ba I'fazökhi ua ösi gulidanö si sökhi sibai Lowalangi.



Ba I'zara'zaraini ngaluo Lowalangi wamazökhi ösi gulidanö, yaia da'ö danö so hili, danö si tumbu zinanö, ba bowo mbunga sogomuhua, ba sinanö sohunö, gurifö si so ba dalu mbanua simane wofo samarongogö li ra ba simanö göi gurifö ba dalu nasi. Da'ö fefu oi nifazökhi Lowalangi.



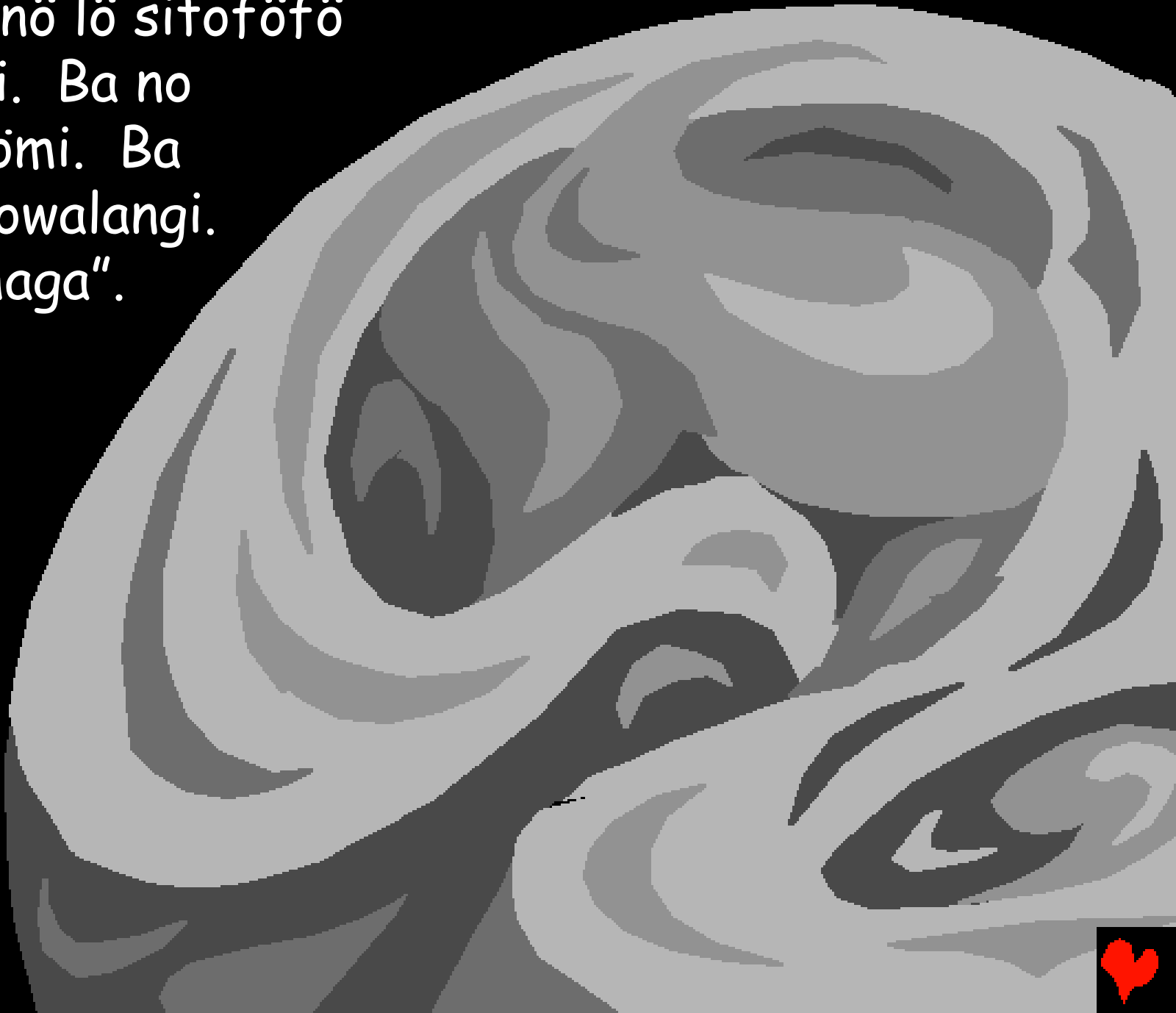
Ba mböröta, me lö nasa
mufazökhi Lowalangi
ösi gulidanö andrö, me
si lö ösi. Ba no
ogömi'gömi, lö
si toföfö. Ba
ha Lowalangi
andrö si so, ba
Ya'ia Lowalangi
Samazökhi
gofu ngawalö ösi
gulidanö andrö.



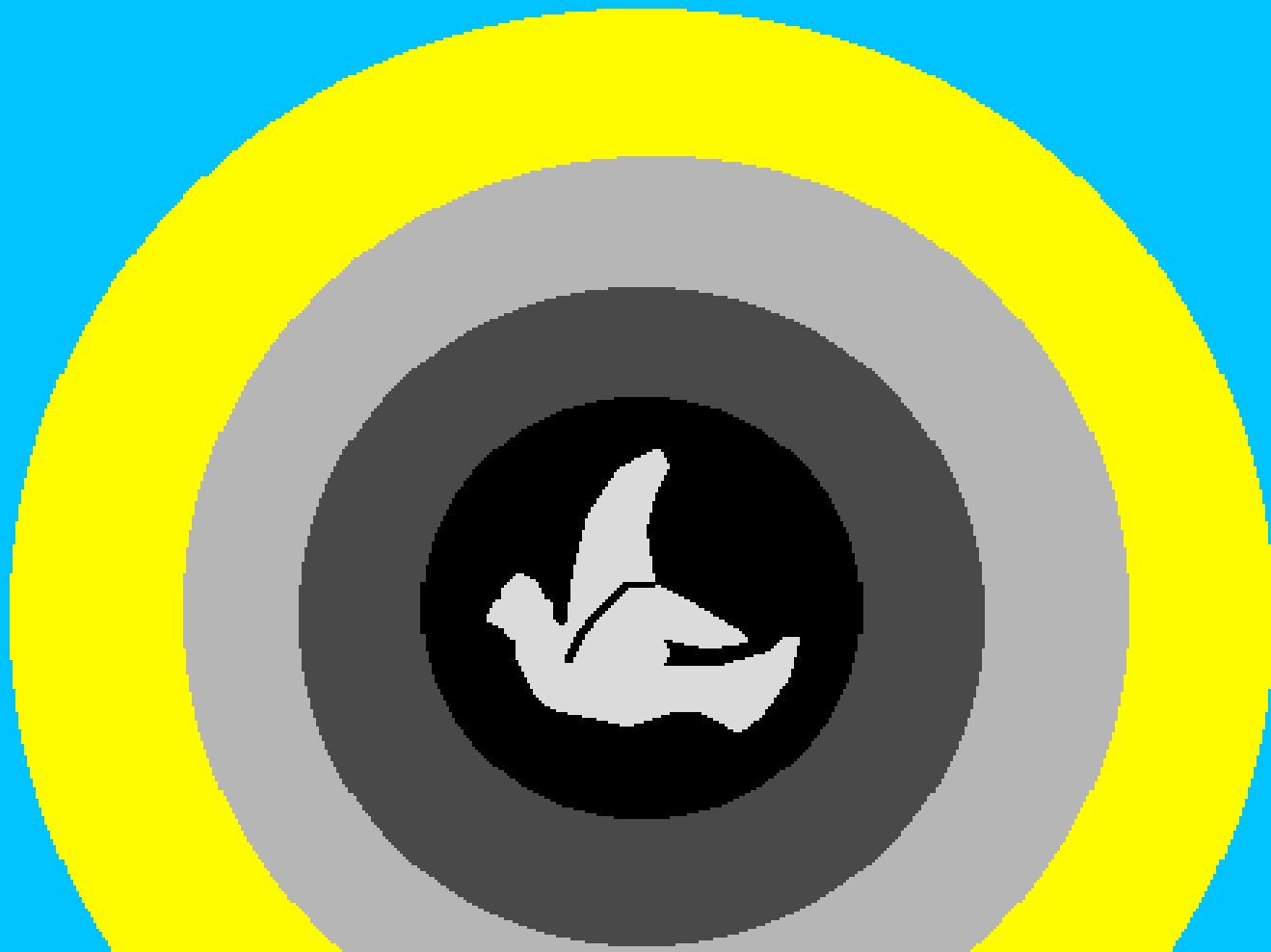
Ba mböröta,
Lowalangi andrö
I'fazökhi zorugo
ba gulidanö.



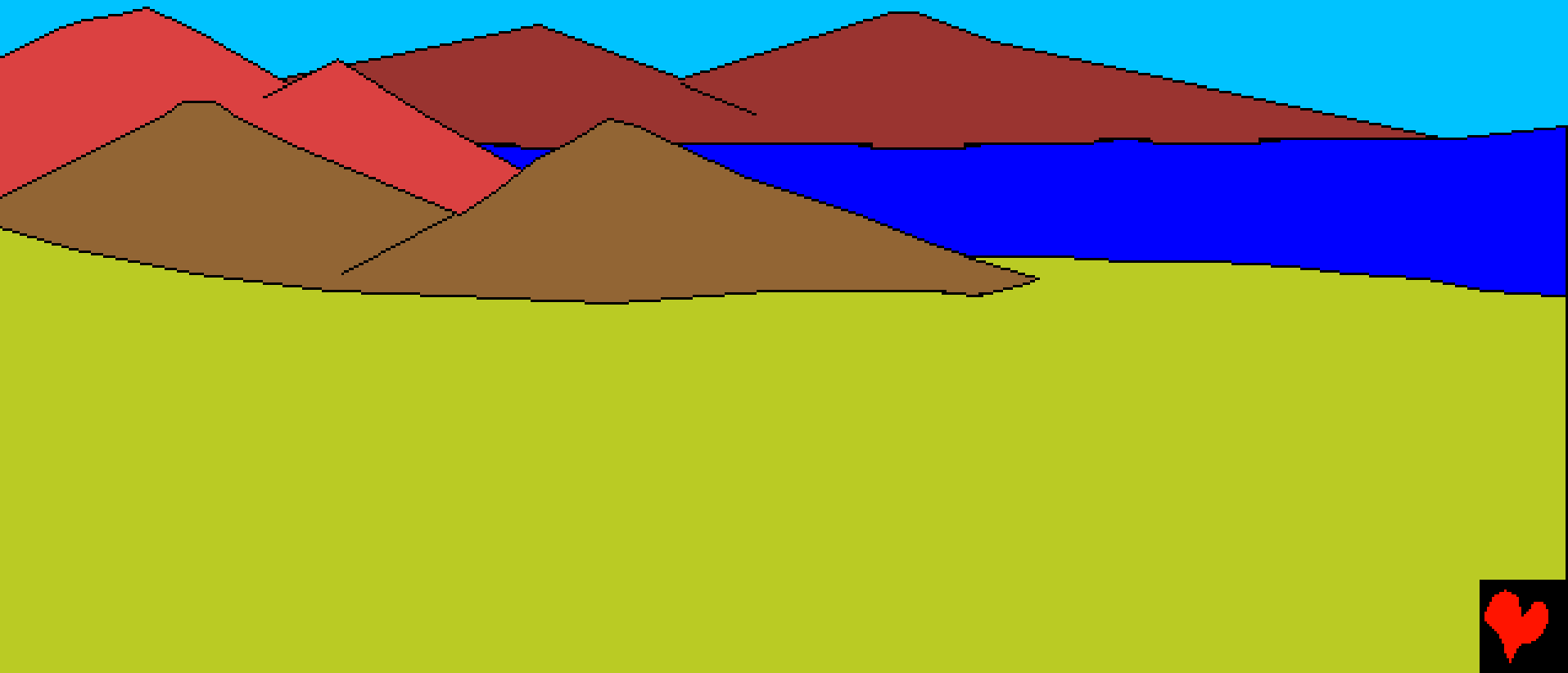
Ba ulidanö lö sitoföfö
ba lö ösi. Ba no
ogömi'gömi. Ba
imane Lowalangi.
"Ya mohaga".



Ba alua so haga. Ba I'fotöi haga andrö Lowalangi
yaia si ma'ökhö ba sogömi'gömi Ifotöi si bongi. Ba
numalö zi bongi, ba tohare zi moluo, da'ö ngaluo si
föföna.



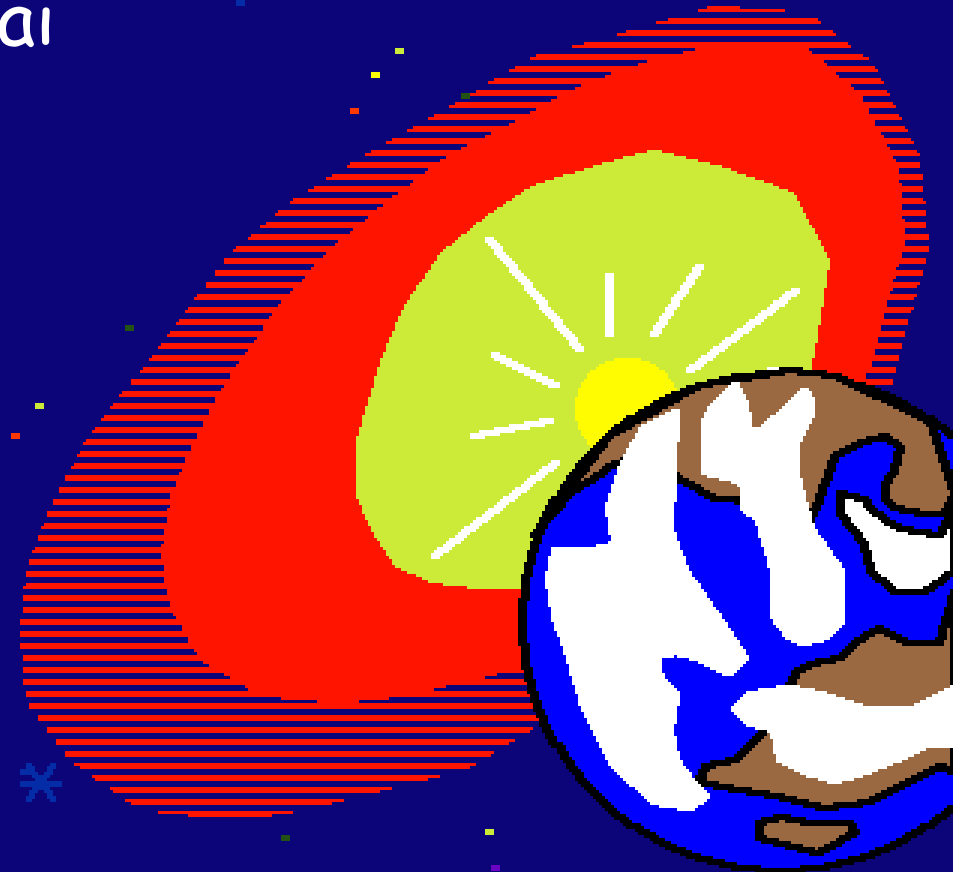
Ba luo si dua, Lowalangi andrö I'owuloi idanö irugi si so barö mbanua. Ba luo si tölu, ba I'oroï'ö Lowalangi, "ya oroma danö sabe'e". Ba alua zi manö.



Ba aefa da'ö I'faretakö Lowalangi ena'ö tumbu ba
danö ngawalö zinanö fefu, ya'ia zinanö sohunö
ba sinanö sowua ngawalö mbua. Ba
alua zi manö. Ba numalö zi
bongi ba tohare zi moluo,
da'ö ngaluo si tölu.



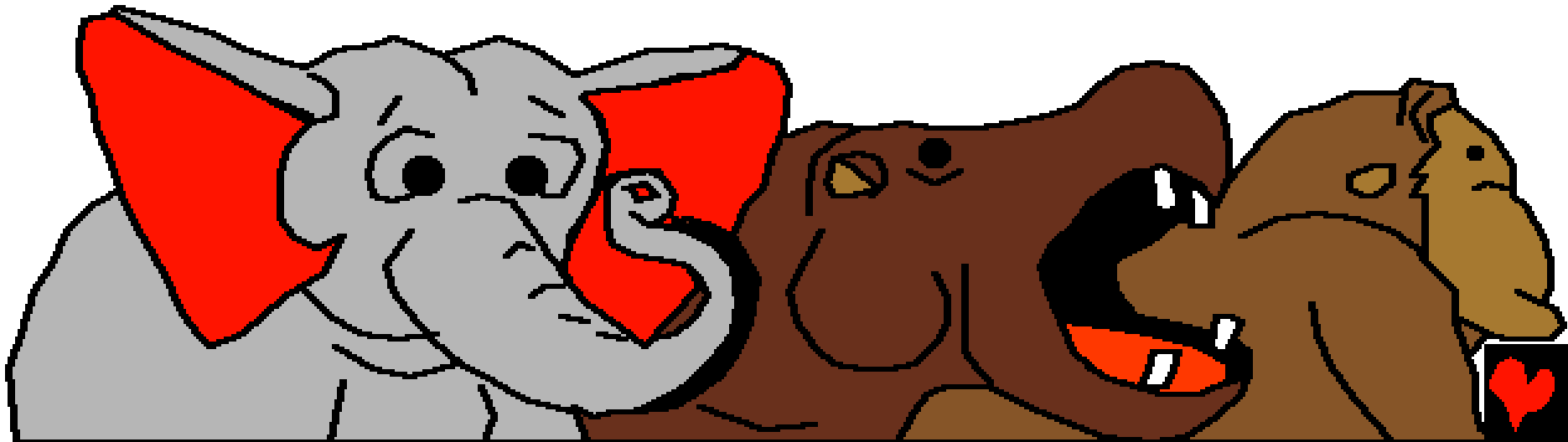
Ba aefa da'ö I'fazökhi haga andrö ba mbanua si
ya'wa ba wohagaini ulidanö, ba mba'wa
andrö wamatörö si ma'khö ba si
böngi, ba döfi andrö samöfö'ö
haga ba sogömi'gömi si tebai
te'erai. Numalö zibongi ba
tohare zi moluo, da'ö
ngaluo si öfa.



Ba aefa da'ö, nifazökhi
Lowalangi yaia da'ö ngawalö
gurifö simane i'a ba nasi
ba dalu mbanua ngawalö
wofo. Ba ngaluo si lima
I'fazökhi ngawalö gurifö
so noso andrö Lowalangi,
he segebua ba he göi
sigide'ide ba simanö göi
ngawalö wofo ba dalu
mbanua. Numalö zi
bongi ba tohare zi
moluo, da'ö ngaluo
si lima.



Ba aefa da'ö, ba Ifuli imane Lowalangi "ya ibe'e
baero ngawalö so noso ..." gurifö tanö yaia gurifö
niha ba utu ndr'u, sebua ba he göi side'ide, ba
sanana ba danö, ba sauri ba nidanö. Ba fefu da'ö
ba no nifazökhi Lowalangi ba zi ma'ökhö da'ö.



Numalö zi bongi ba tohare zi moluo,
da'ö ngaluo si önö.



Ba Lowalangi Ifazökhi tanö bö'ö - si lö fagölö. Ba fefu ba no Ihönagö Lowalangi ba niha. So gö moroi ba zinanö ba kabu ba gurifö soguna ba niha. Ba imane Lowalangi, ia da'e ba da tafazökhi niha simane Ya'ita ba sifakhilikhili khö-Da. Ya'ira dania zamatörö ngawalö fefu si so ba gulidanö andre". Si manö wamazökhi Lowalangi niha, Ifazökhi ira simane Yaia samösa ...



Ba imane
Lowalangi khö
Gadamo "tola ö'a
fefu mbua geu
bakha ba kabu
andre. Ba hiza'i
tebai ö'a mbua
geu si so ba dalu
kabu. Ba na ö'a
mbua geu andrö
ba si mate
ndra'ugö".



Ba imane Yehowa Lowalangi, "Lö sökhi ba niha na ha ya'iya'ia. Da Ufazökhi khönia nawö." Ba Lowalangi iowuloi fefu he gurifö ba he wofo andrö ba iohe khö Gadamo. Ena'ö ifotoi fefu gurifö andrö. Ba hiza lö sinange sitobali awö khö Gadamo.



Ba Lowalangi ifemörö sabölöbölö niha andrö. Ba me
no mörö ia, ba Ihalö sara döla nosu niha andrö, ba
Ifazökhi ndra alawe moroi ba döla
nosu andrö. Ba sindruhu
wamazökhi Lowalangi
andrö ira alawe sitobali
awö si sökhi khö
Gadamo.



Ba Lowalangi ifazökhi fefu da'ö önö ngaluo
fa'ara. Aefa da'ö Ifahowuö Lowalangi luo si
fitu ba ibe'e töi luo andrö luo wolombase.
Ba kabu Gedena andrö, Gadamo ba Khawa
fo'omonia ba no somuso todo ira
ba la'ata'ufi Lowalangira. Yehowa
Lowalangi andrö ba no Samazökhi
fefu si so ba gulidanö andre,
ba sitobali



awö
ia khöra.



Ba mböröta me Lowalangi andrö
I'fazökhi fefu hadia ia

Sambua nidunö'dunö sitobali goröisa Lowalangi

Tesondra ba

I Moze 1-2

"Famahaö Lowalangi andrö ba ibe'e haga."
Sura Sinunö 119:130



Afuriata



Ba buku daromali Lowalangi da'a ba te'ombakha'ö khöda wa'abölö
Lowalangi ba wamazökhi yaita ba ena'ö göi ta'ila Ia.

Ba I'ila Lowalangi fefu hadia ia si lö sökhi nifaluada, ba latötöi niha
andrö yaia horö. Ba huku horö andrö ba fa'amate, ba hiza Lowalangi
I'omasiö sibai niha irege Ifatenge nono-Nia si hasamösa, Yesu andrö
mate ba döla röfa ba ni'huku börö fefu horöda. Ba hiza Ifuli maoso
ia ba mangawuli Ia ba zorugo. Ba na faduhu dödömi khö Yesu ba
mi'andrö fangefa ba horömi andrö, ba I'efa'ö. Ba ifuli so dania ba
wa'aurida, ba so wa'auri andrö ba khöNia irege ba zi lo aetu.

Ba na faduhu dödöu ba zura andre, ba ömane khö Lowalangi:
khö Yesu, mamatido khöu wa Zo'aya ndra'ugö ba no tobali ösi niha ba
wa'amate börö horö andrö fefu, ba iada'a ba no auri ia. Ena'ö mi'ae'e
ba wa'aurigu ba efa'ö fefu horögu, irege usöndra fa'auri sibohou, ba
samuza ma'ökhö ba sifao khö Lowalangi irugi zi lö aetu. Ba fasugi
khögu ba wolo'o ba sauri ba khoNia simane nonoNia andrö, yaduhu.

La baso buku daroma li Lowalangi andrö ba fahuhuo
khö Lowalangi seroma'ökhö! Yohane 3:16

