

Itimiqo ghenguno Baibel
kilekithi

Kughou Alhou
no thwokha kuchopu
pulho sutsu keno



Yekipheu: Edward Hughes

Mijekutsu-u: Byron Unger; Lazarus

Shikithe kutsu-u: Bob Davies; Tammy S.

Pekikide kutsu-u: Vikashe Achumi

Mulaphe kutsu-u: Bible for Children
www.M1914.org

©2013 Bible for Children, Inc.

License: Tsala tsaghi kaku hipau kuqu kidi
shimokepu shi aye kaku hipauye oghola launo
yephelu eno tsughu phelu nani.



Khuno ni pulho kusu tsu-u kya?
Baibel, Alhou Tsah no inahuu timi
shiyeh jeli xughili pitsu ani.



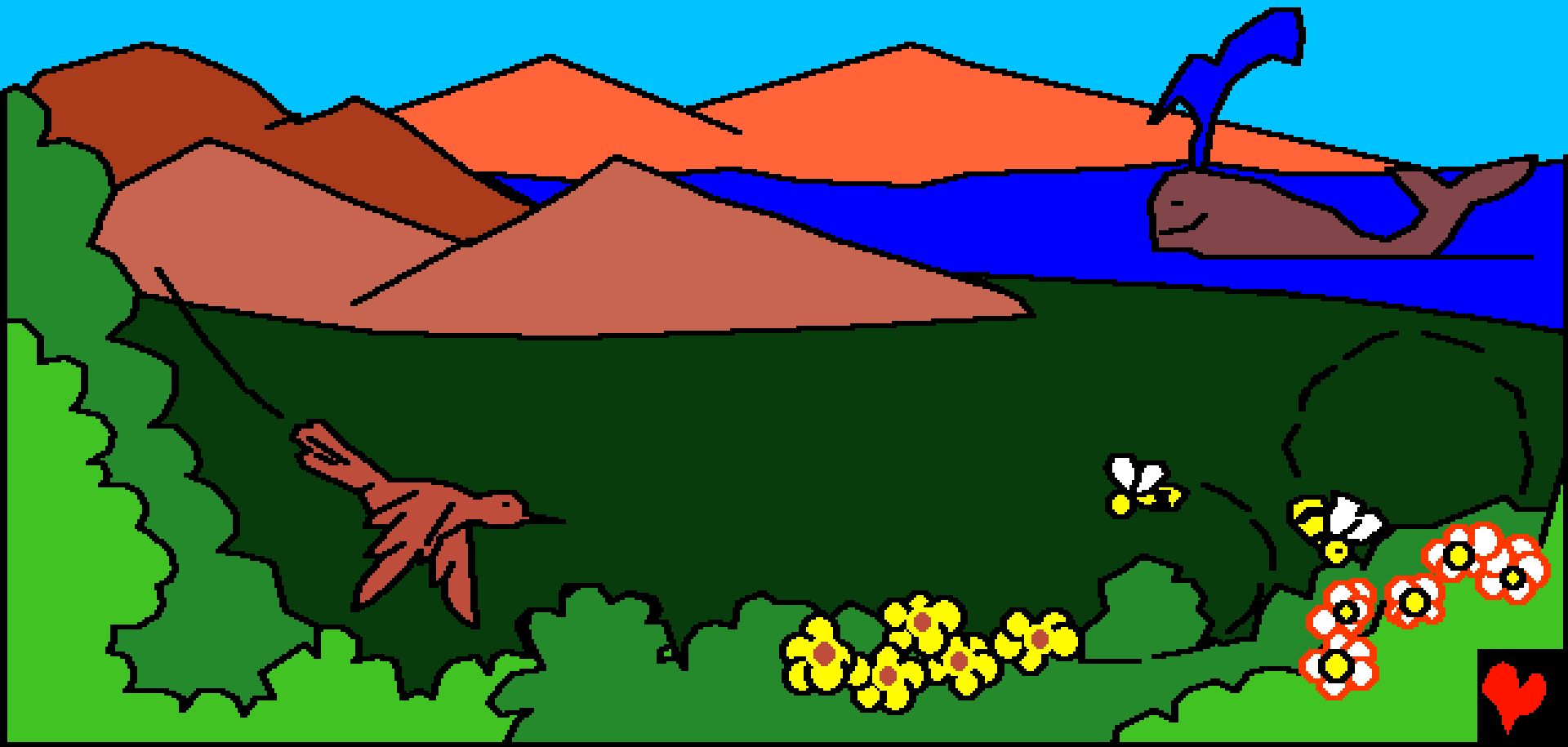
Khaghi abothu lono, timi atughiu
pulho sutsu kelono timi tipau je
Adam kutsu. Alhouno ayeghi
mukhu lono Adam
kughulho
phetsu.



Kughou Alhouno akuxupu thuthu
Adam nigipelo shesu tsu keno Adam
ye lhoxu shive. Eno Adam ye
jukivi ghutu Eden
ipikeulo auve.



Adam lhomiphi zuuno Alhou no jukivi
yeghiqha pulho sutsu eno akumzapu
jeli pesu nhachittoi tsu.



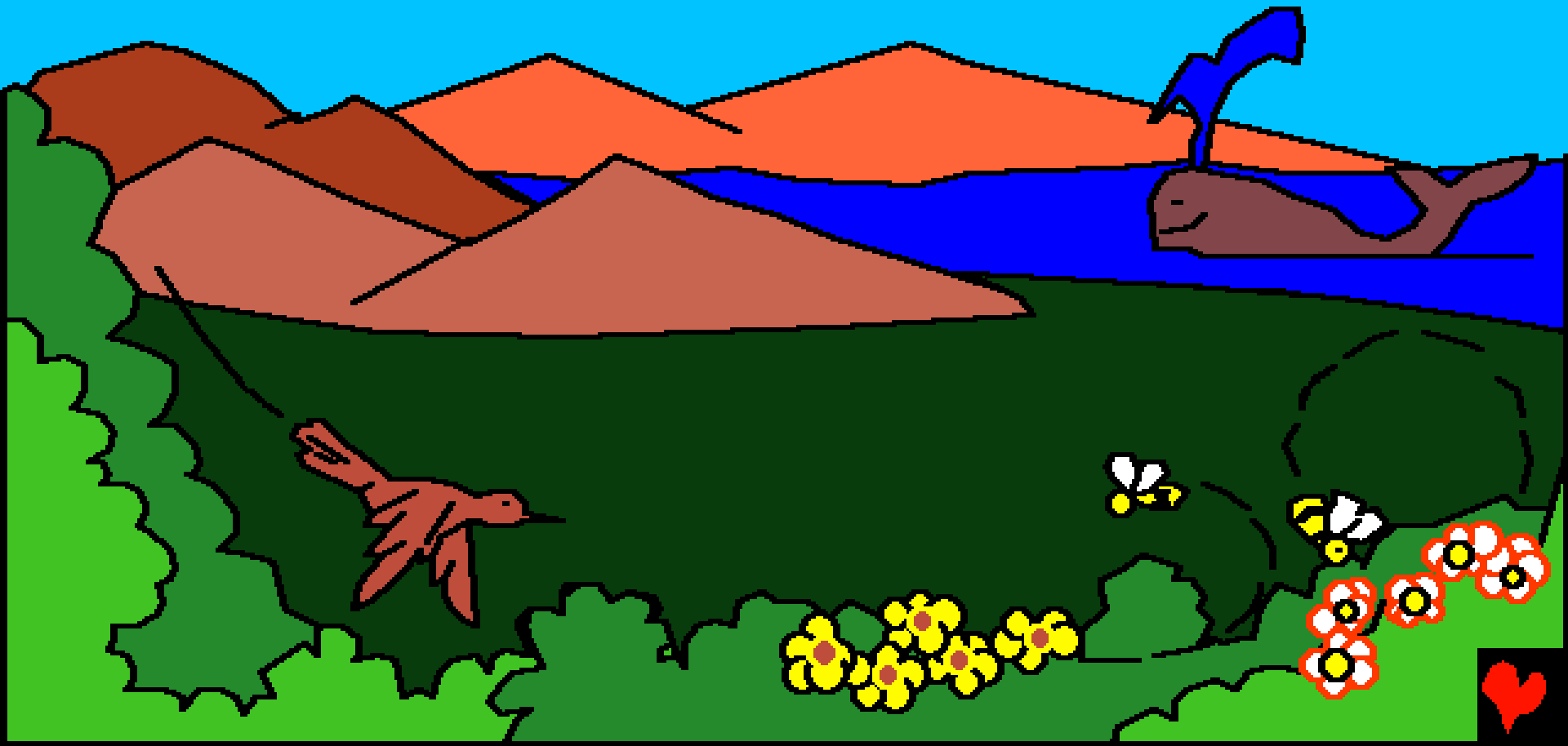
Akikithi lono Alhou no ato naghutoqo
eno jukighilepu aqaqo, tsungu qhui
keu xamunhuqo eno qhemughai keu
suboqo, jukivi aghauqo eno akhi, akha



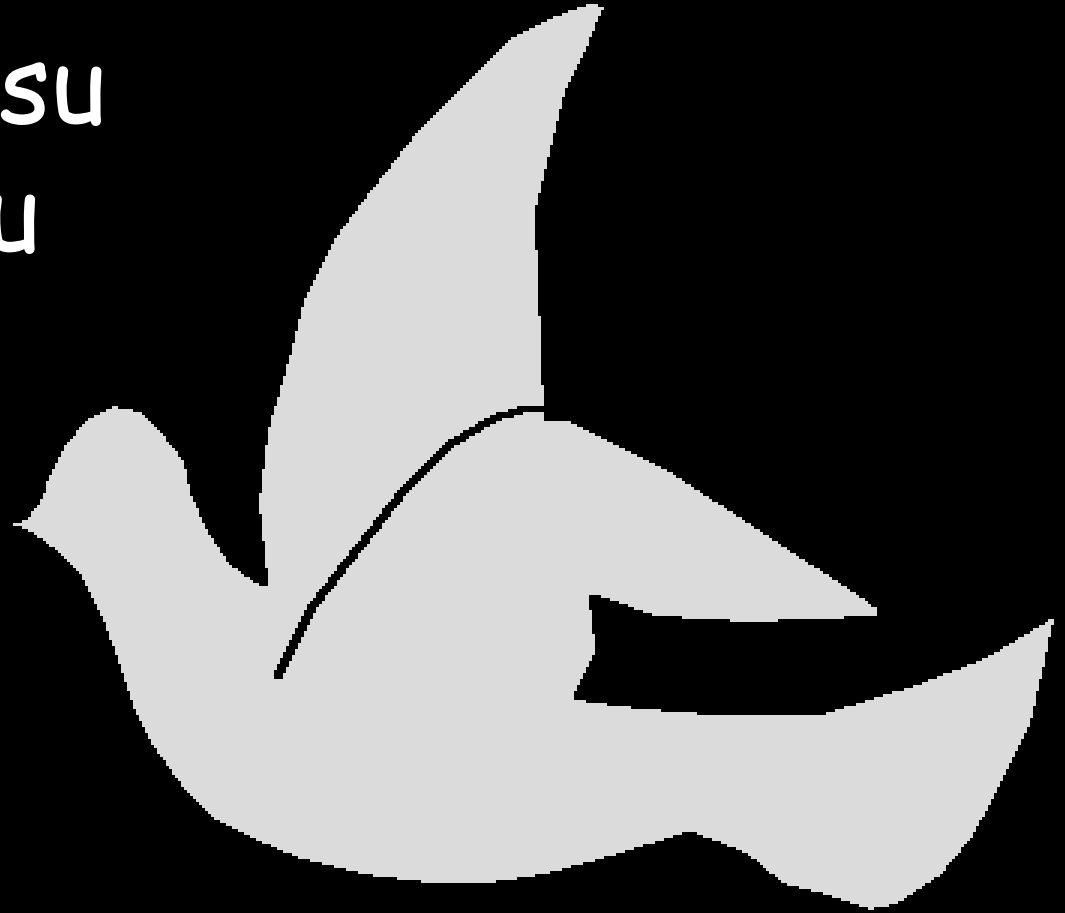
kuloghiqo eno nhaquqo
lhosutsu.



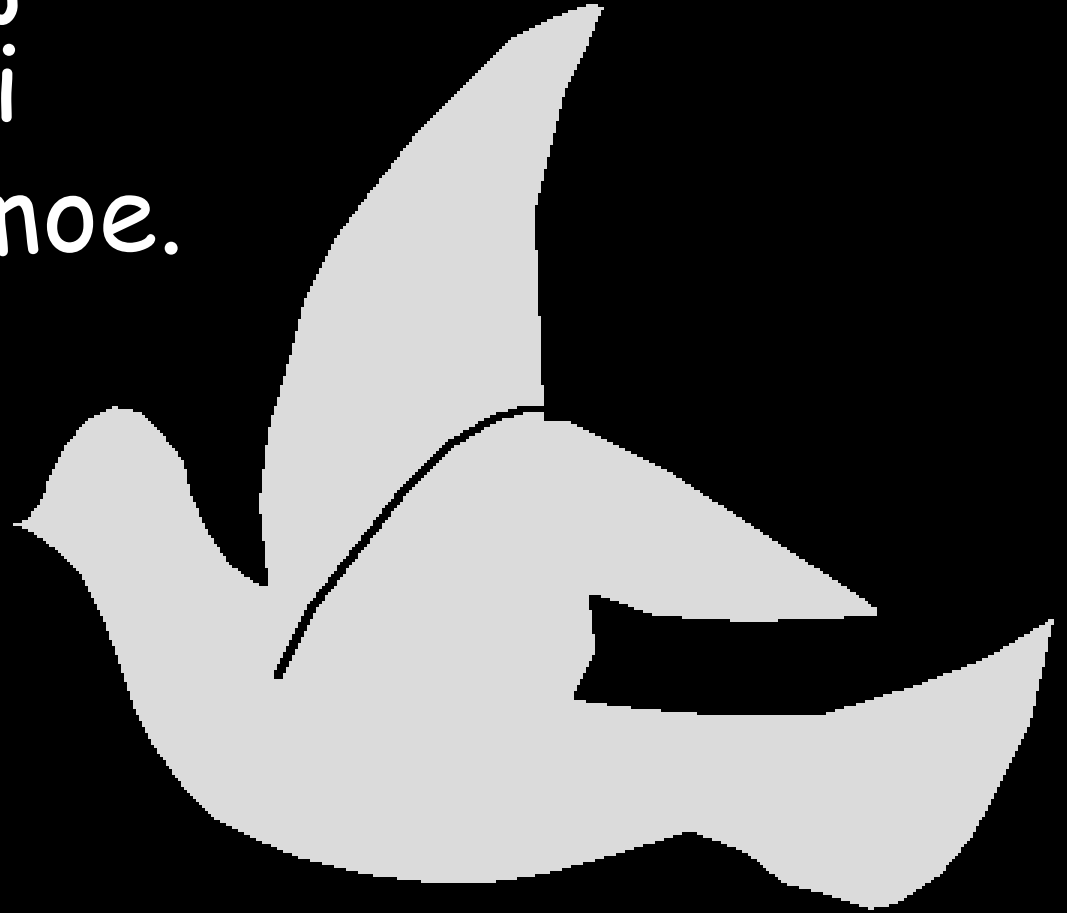
Alhou ye kuchouno thwokha
kuchopu pulho sutsu.



Abothulono, Alhouno
kiumu pulho sutsu
miphi lono Alhou
acheghi eno
kutau ye
kiumu
acheghi
moe.



Timiqo eno a-a jeli
momu thime jeli
kiumu ache ghimoe.
Kiumu acheghi
moe. Akuvu
eno akuzu ghi
kuha. Kunguu
eno akhouu
ghi kuha.



Wove keu tsala eno
thoghiu ghi ache
ghimo. Abothu
kuha keu
Lhou likhi
acheghi.
Tileno Alhou
no pulho kusu
kumla huthu ve.



Abothu lono Alhou no
atsutsu ngo ayeghi lhoe.



Ike ayeghiye kughu
kughalei eno
koghekugha
kuhae.



Eno akuzu no
kuthokuzu
nhape ae.



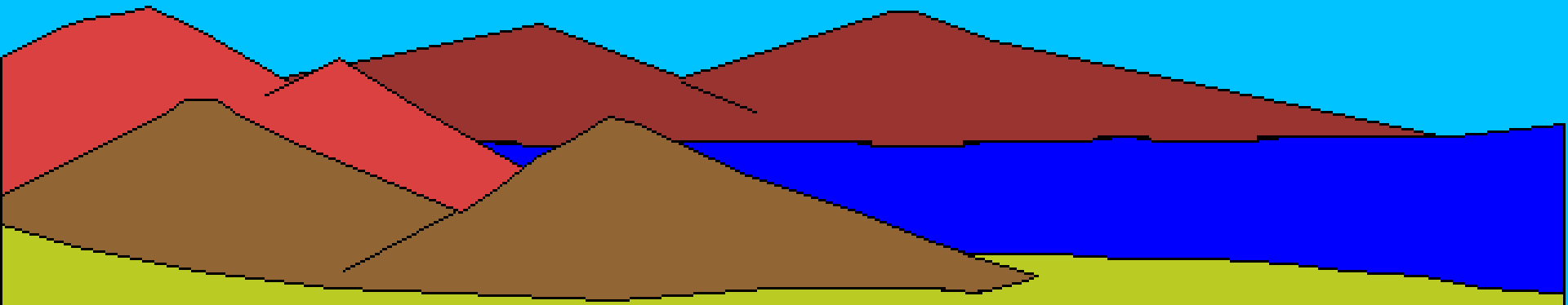
Ikelo Alhou no pi.
"Akuvu ipeg
velo".



Eno akuvu auve. Alhou no akuvu
pesu Tsukuvu eno akuzu pesu
Tsukuzu kuvetsu. Tino atughiu tsala
kijiliu eno inaqhe shive.



Akiniu tsala lo, Alhouno atsutsu
qholo azu akeqo a-a lakhi lo
hekutsuwo kumqoluve pe.



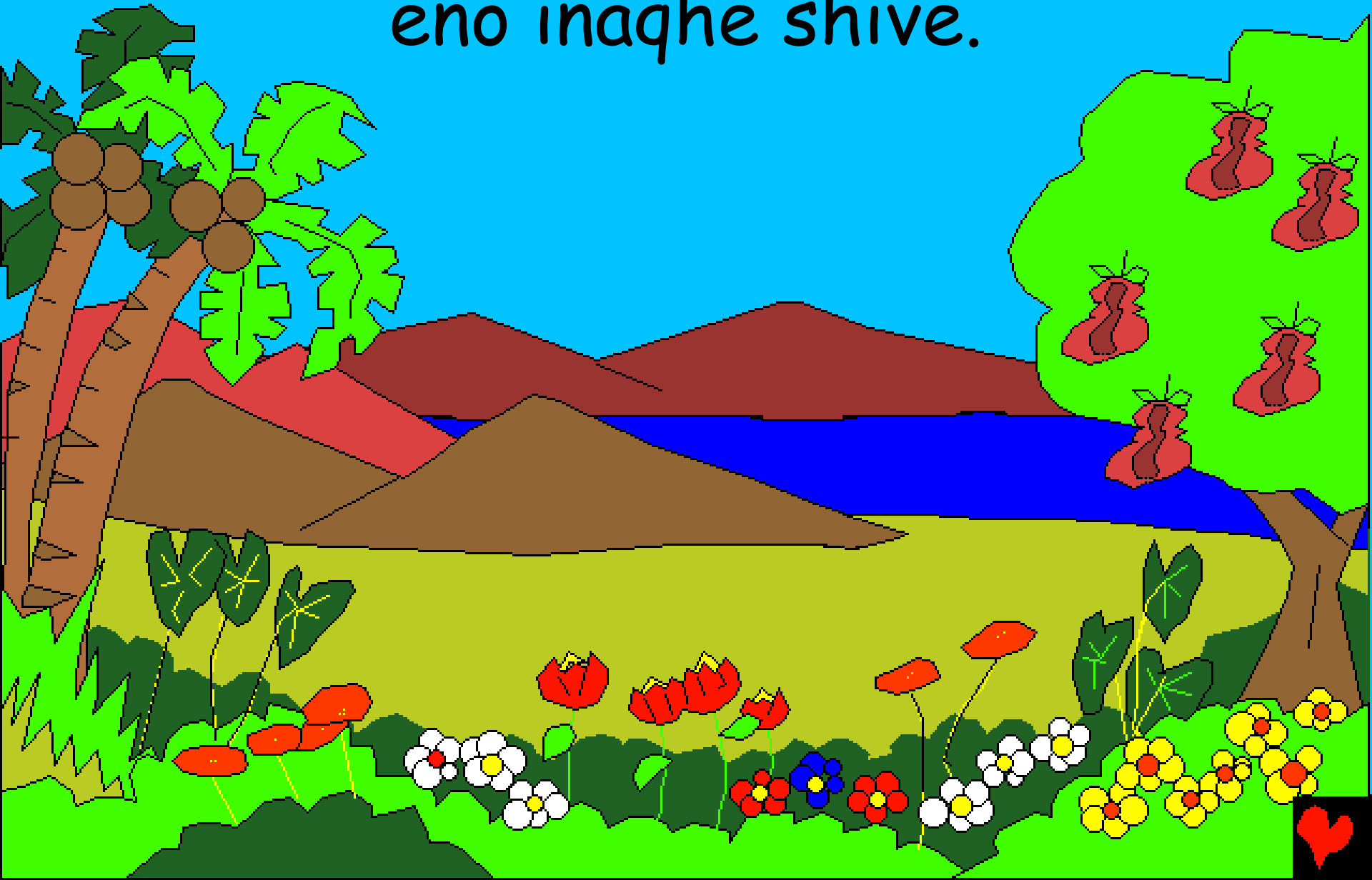
Eno akuthuu tsala lo Alhou no ishi
pi, "Qhaikeu chhigha ipegghi velo
pi". Eno qhaikeu yegghi ipegghi ve.



Alhouno ayeghi pelo atsuni jeli asubo
kumtsu ipeggi pelo pi
azatsu. Eno tishi
ipeggi luve.



Tino akuthuu tsala kijiliu
eno inaqhe shive.



Tipathiu Alhou no
tsukinhe, eno aghi,
eno hesakha kumlapu
shi ayepuqo kutomo
mlatsue. Eno tino *
abidiu tsala kijiliu
eno inaqhe shive.



Azulo xu akeu
lhoxu kutomo
eno aghau qo
Alhou mulolo ae.
Apunguu tsala
lo azulo lhoxu
kijeje eno kititiqo,
achishibo kupu kije
eno kitila ghauqo
lhosu tsue.



Alhou no azulo
akhaqo pelo azulo
chitoi chokive
iqho iqhi lupe
eno aghau jeliqo
pelono ayeghi
shou, atsutsu
hokumxa lo
yeiqho yeiqi
lupe.



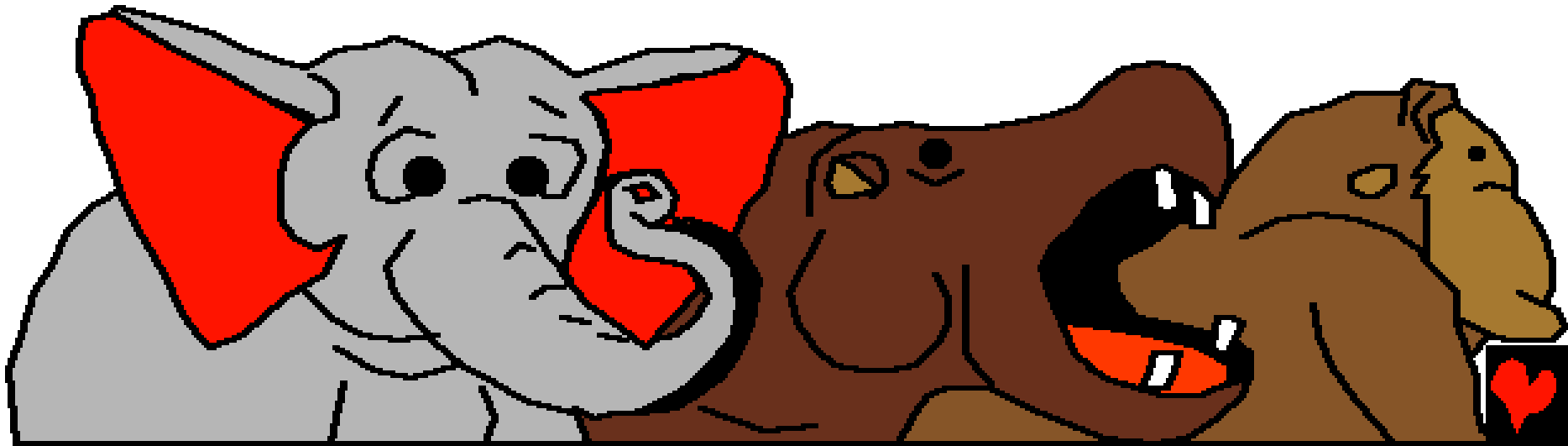
Tino apunguu
tsala kijiliu
ngo inaqhe
shiluve.



Tipashelo, itaghi Alhou no pi,
"Ayeghi pelo akuxu kua lhoxu tikishi,
tughashi, eno itikiche lhoxu pututa
jeli kumtsu ipeggi pelo". Eno
tishiluve.



Akuha akuloghi eno lahi lazai
ashukiqo, eno akhosa, itaghi tikishi,
eno itikiche jeliqo Alhou no lhoqhi
tsue. Tipau tsalalo Alhou no akuxu
kua lhoxu kumtsu lhosu tsu.



Eno tino akutsugho tsala kijiliu
eno inaqhe shive.

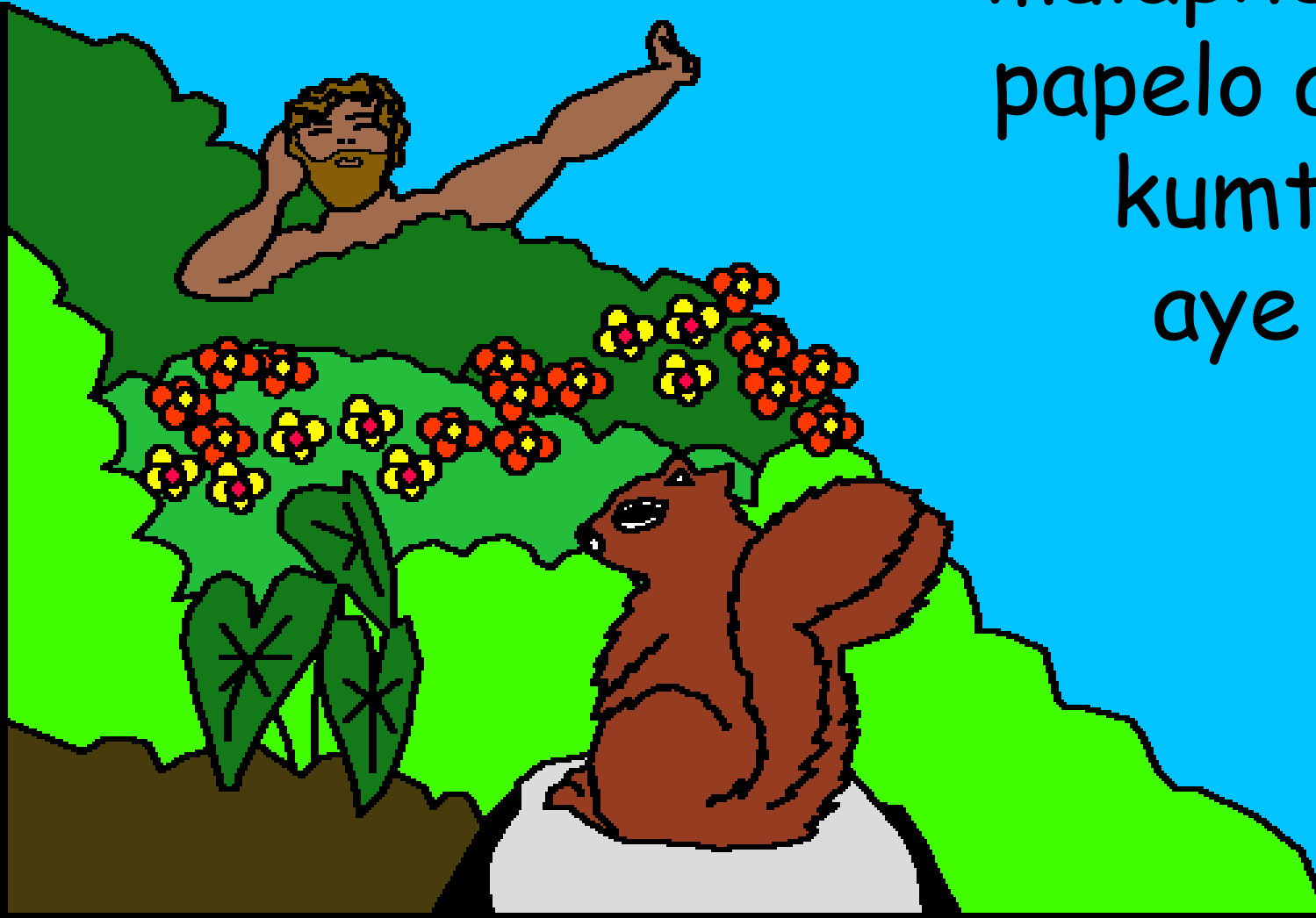


Akutsugho tsalalo Alhou no pakutau
lakhi shitsue - ighono ame kuapu.

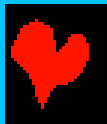
Timi ghenguno kuchopu kutope
qhuvetsu. Alulo timi
ghenguno achuqhupu
eno tughashi
timi qhe kepu
qhivetsu.



Eno Alhou no pi,
'Ningu julho lono timi
mulapheni. Eno
papelo ayeghilo
kumtsu shou
aye pepeni'.



IKEHU ALHOU NO
PAJULHO LONO
TIMI PULHOSUE.
ALHOU KIMIHI
LONO PANO
TIMI
PULHOSUE.



Alhou no
Adam putsae.
"Aghutu lo
akeu xathi
kumtsu nono
chulu nani.



Ikemu akivi
eno alhokusa
ithilupe
chekeu
subo xathi
noye chukevilo.
Tsala nono ti
chu aye noye
thini putsae".



Eno Apuh Alhou no ishi pi, "Timi pelo palikhi apekeu hiye aloni chemoe. Ino pakukuphu lakhi lhope tsuni". Ampeu Alhou no tughashi tikishi eno aghau kumtsu Adam lau saghi.

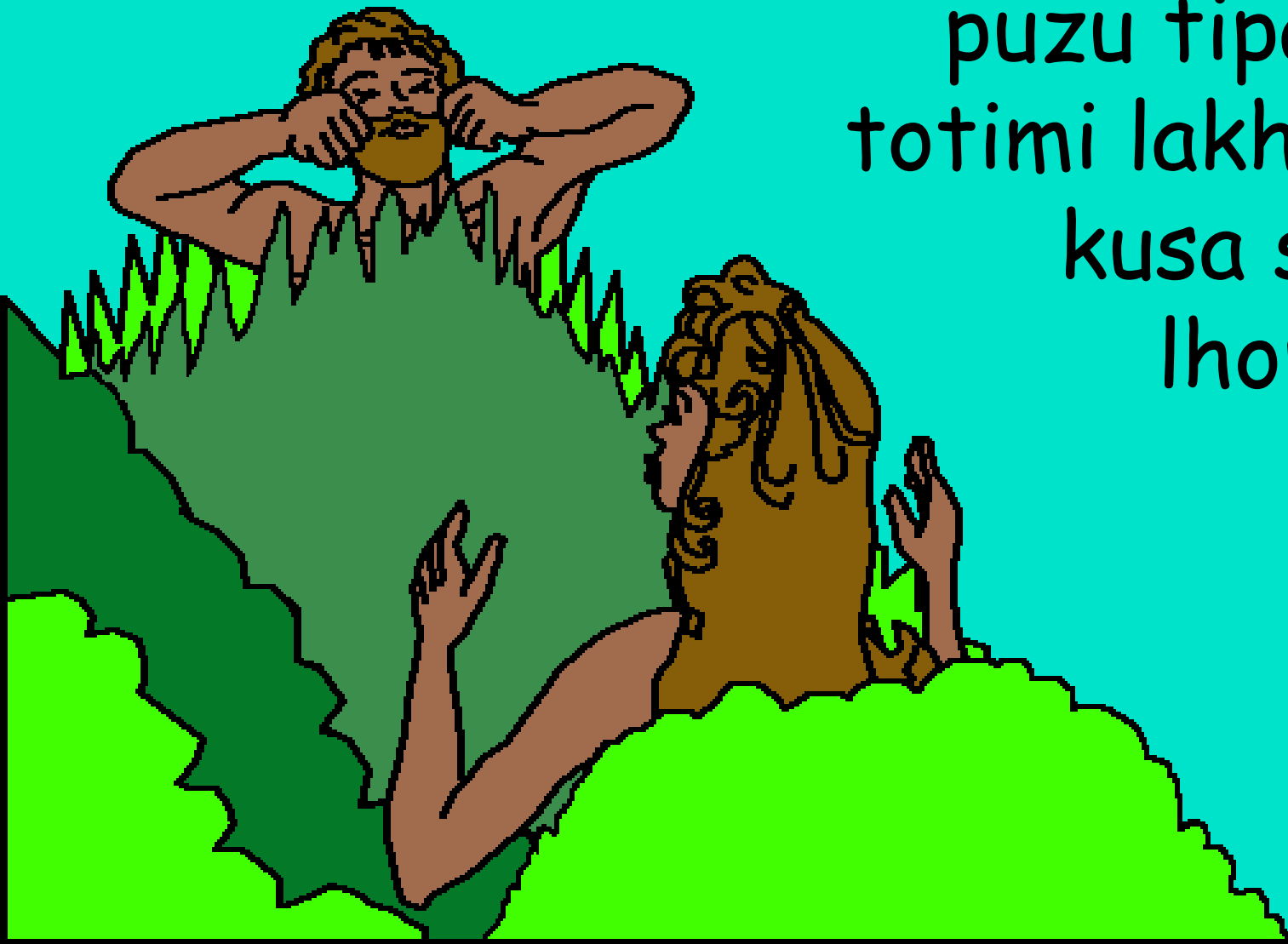


Adam no tipaqo kumtsu jekuve tsue.
Adam ye ighono alokutsu
shi aghini che muthae.
Ikemu paghenguye
kumghulu kepu
kukuphu kuhae.



Alhou no Adam pelo zuheyivepe eno
pano pa kuchughi lakhi ikhiphe luve

puzu tipau pesu
totimi lakhi Adam
kusa shikepu
lhophetsu.



Atsala tsugho dolono Alhou
no kuchopu mulaqhive. Eno
Alhou no tsala akutsuniu
kumghatsue eno
akulhokihi tsala
shitsue.



Eden Ghutulo Adam eno Eve
pamaye Alhou ghokulu lono
alokivi shi ache.



Kughou Alhou no
thwokha kuchopu pulho sutsu keno

Alhou launo ighi keu kughakiche Tsah,
Baibel

hile no phulu nani

Bothubo 1-2

"Otsah/Okukutsu tsah iloghi keu lono
akuvu tsu cheni." Leshele 119:130



Ashekha shiva



Baibel lo kughakuche veche wono akumzapu
Lhou ni pulho sutsu keu ghili ithulu ani eno
opelono ghi pa ithi penishi ani.

Alhouye ninguno akumla lhokusa shikeu
kuchopu ithi ani, eno pano tipago pesu axine
ipi kucheni. Axine jume ye akithi, ikemu
Alhouno ayeghilomi kimiyekutuke ghenguno
Pa Nu lakhi likhi akeu, Jisu, pesu nixine
ghenguno Kross lono aghashi thive pe. Eno
Jisu ye xu ithuve no Kungughalo pakilo uve.
Nono Jisu pulu eno pavilo oxinego ghivetsulo
ipi khu aye, Pano shitsu nani. Pano itehi
ighino ogholo xu uve nani, eno noye lhokuta
kuxu Pagholo xu auve nani.



Nono hipauye kuchou ke
ipi pulu aye, Alhou vilo ishi pilo:
Ampeu Jisu, noye Alhou kepi ino pulu ani, eno
Nono timi phimpi xhapu susu ixine ghenguno
thive, eno Noye itehiye xuchilethuva. Ilolo
ighilo eno ixinego qhivetsulo, tishianguo niye
itehi akuxu kithe ithulu nani, eno ghulo lakhi
niye Kungughalo ogholo lhokuta kuxu
xu auve nani.

Baibel philo eno pulhapuju Alhou sasu
kuputsa lo. John 3:16

