

Baibul pi lutino
keliwu



Polo, Gang pa
Lubanga ma
mwunya



Lacoc obedo: Edward Hughes

lakel lanyut obedo: Lazarus
Alastair Paterson

Layub obedo: Sarah S.

Lagony lok obedo: Mrs. Grace Orik Twikirize

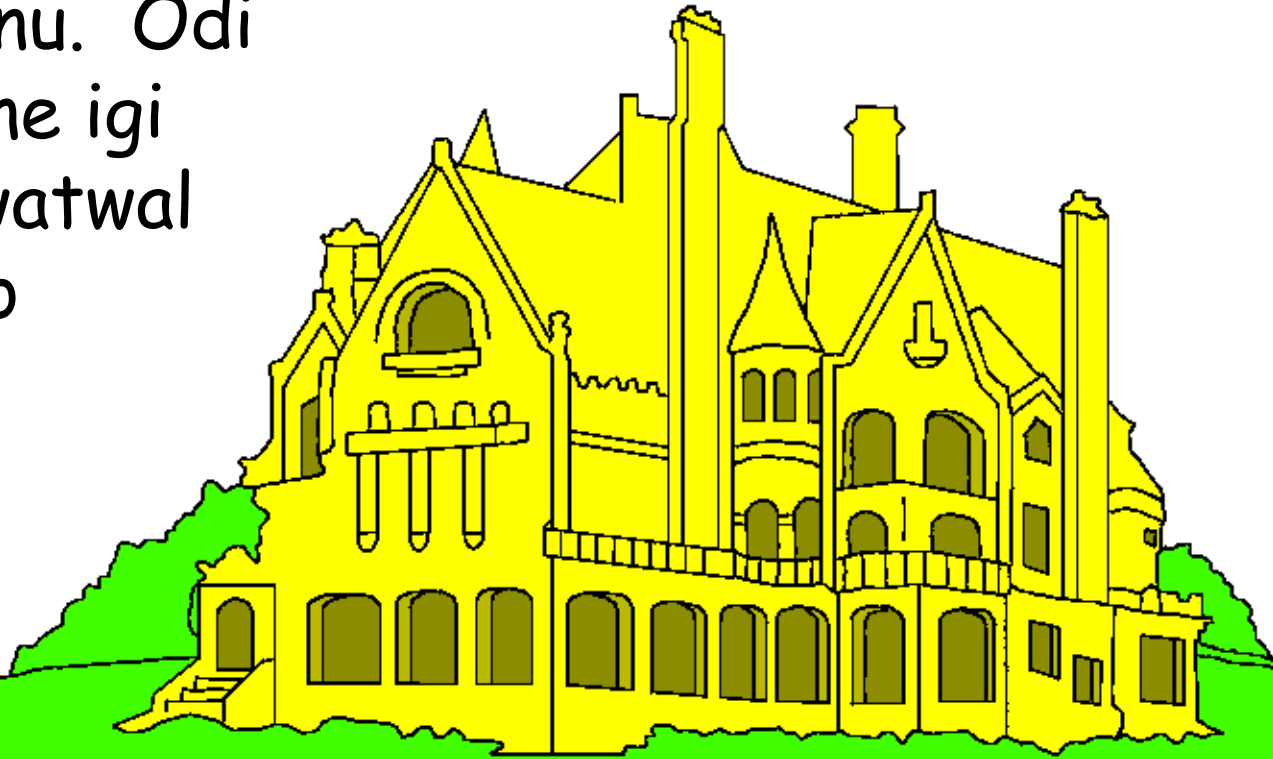
Ngat ma oyubo obedo: Bible for Children
www.M1914.org

©2020 Bible for Children, Inc.

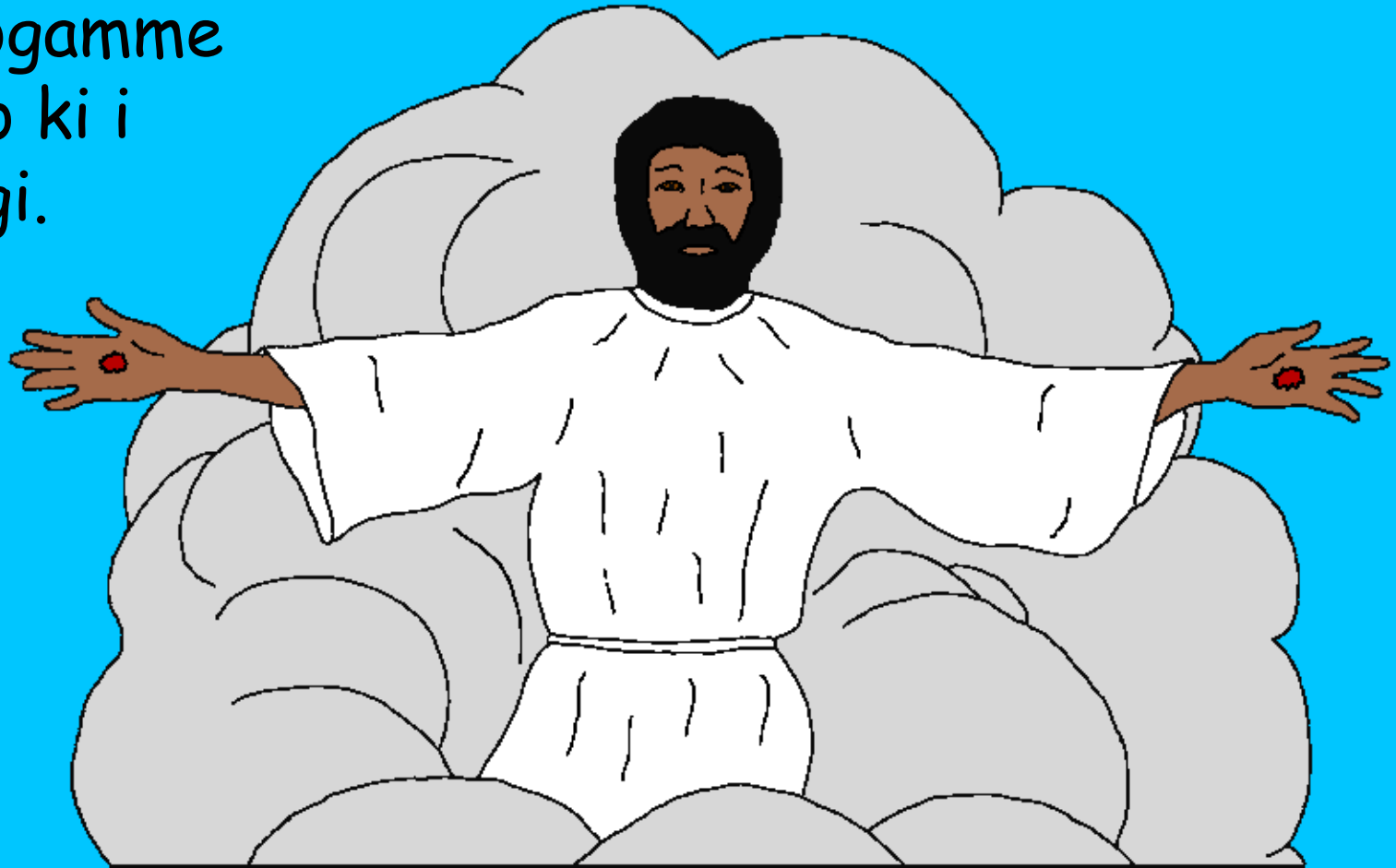
Twero: Itye ki twero me tic ki gin acoya man, ento
i peke ki twero me cato gin acoya man.



I kare ma Yecu onongo tye makwo i lobo kany en otito pi polo bot lukwena ne. En olongo ni "Ot pa Abana", dok bene otito ni tye iye odi ma pol ata kunu. Odi magi dito dok bene igi lac. Pol munya twatwal dok pe tye odi mo i ngom kany ma porre ki polo.



Yecu owaco ni, "Acito ka yubo ki wun kabedo. ci ka ayubiwu kabedo, Abidwogo cen ka gamowu wek wubin bota." Ada Yecu odok i polo inge cer ki i lyel. Lukwenane guciko wangi malo ka neno kit ma gitere woko malo i polo, ci pol ogamme woko ki i wangi.



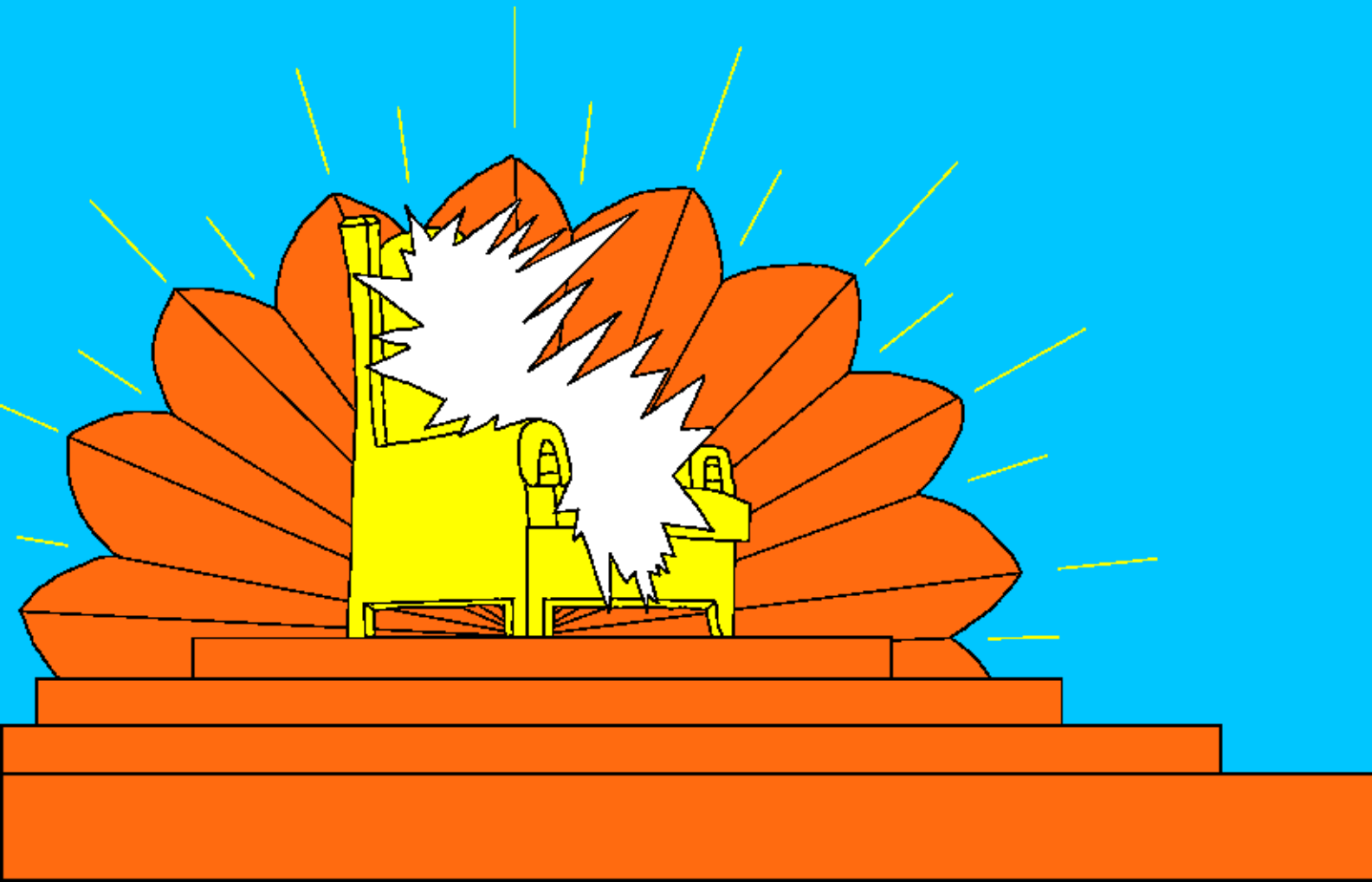
Nicakke i kare meno, lu Kricitayo gi po gicikke
pa Yecu me dwogo ka gamogi woko. Yecu
otito ni dwogone bibedo atura, ma nonogo
ngatimo pe ka paro pire. Lukricitayo
ma guto ma en peya odwogoni
kono? Baibul wacco ni jo muto
gicito atir BOT Yecu. Ka
wabwoto komwa woko
nongo watye paco
bot bot Rwot.



Tye paco bot
Rwot



Niyabo, ma en aye buk me agikki i Baibul, titowa-ni polo ber atika. gin me aura dong tye kitman ni, Polo paco pa Lubanga. Lubanga tye kaweng, ento kom ker mere tye i Polo.



Lumalaika ki lwak ducu me
polo giryebe ka woro Lubanga
i polo. wa jo pa Lubanga ducu
ma guto gucito i polo bene
giryebe ka worre.



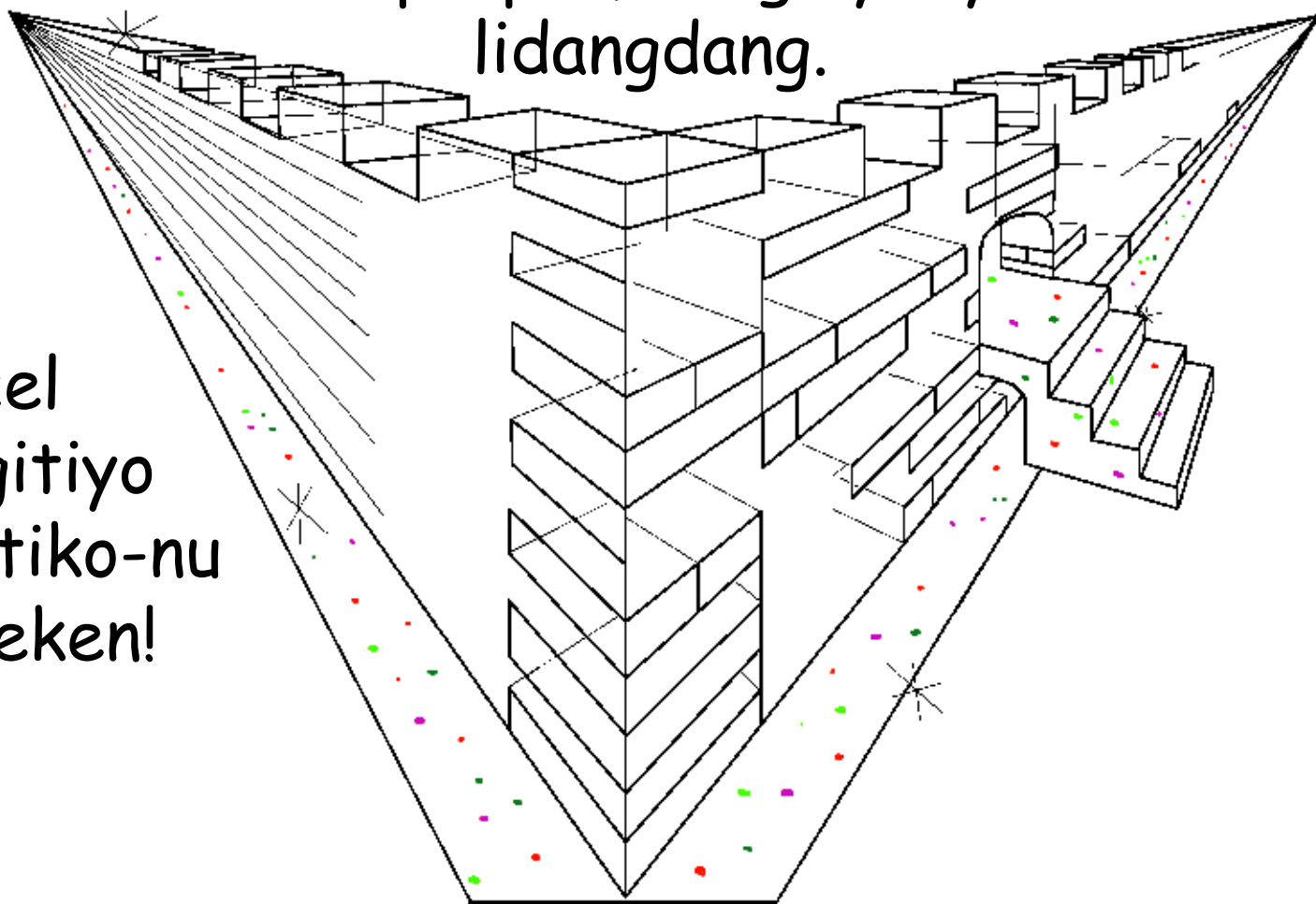
Lok magi nonge ikin wer ma giwero i polo kunu:
IN MYERO DOK PI REMONI IKOKO DANO
PI LUBANGA MA GUA I KAKA
MAPOL MAPATPAT KI I LEB
ROK DUCU CI ILOKOWA WA
DOKO LUKER KI AJWAGI
PA LUBANGA.

[Niyabo 5:9]



Pot buk me agikki titoni polo obdo "Yerucalem Manyen". Dit twatwal ma cel gogo ne oyille wamalo likung. Celle gigero ki jacipa, ma nen maleng calo kiyo. Guti-ne ducu gideyo ki litino kidi me wel mapatpat, ma giryeny lidangdang.

Wang
kac
acelacel
ducu gitiyo
ki kit tiko-nu
acel keken!



Wang kac magi maditoni duc ma gitiyo ki kit tiko-nu
pe bedo alora matwal. Kong wacito wawotu wunu iye
... MAA-DO! I Polo dok ber dong loyo kamo duc.
Gang kal man giyubo ki Jabu maleng, ki kiyo ma
ryeny. wa gudo ne
weng gitiyo
ki jabu.



Kulu mamunya me pii me kwo ma mil mol aa ki i kom
ker pa Lubanga. I dog kulu ryoryo tye iye yat me
kwo, ma yam okwongo nonge i poto Eden. Yat man
pire tek mada. Nyako nyige mapatpat aparwiye
aryo, ma nyak dwe ki dwe. Pot yat meno obedo
me cango two pa jo me rok ducu.



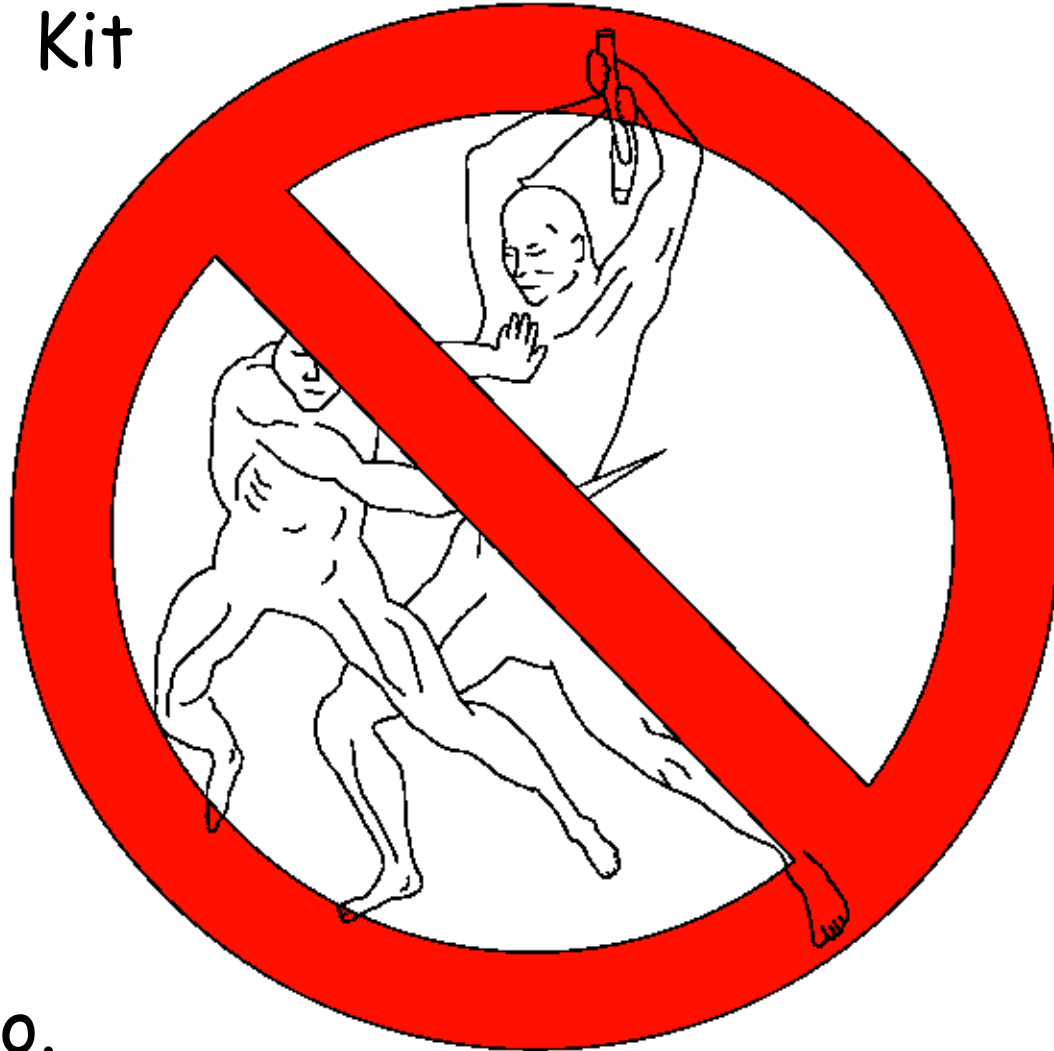
I Polo, ceng ki dwe pe mitte me tar. Tar me deyo
pa Lubanga opongo kaweng. dyewor peke kunu.



Wa lee ma i polo bene pat. Ginweng gi mwol dok wor. Orudi ki litino romo gicamo kacel. Wa labwor bene camo lum calo dyang. Rwot owacci, "Pe gibiketo ret nyo kadi nek i wi got mera maleng ducu."



Ka waneno, ci wanongo
ni jami mogo pe nonge
i polo. Lok me akemo
pe owinye. Kit
lweny mo
keken nyo
worro
bene pe.
Lagony
mo me
dogola
bene pe,
pien lukwo
bene pe
nonge i polo.



Lugoba, luneko, lotal
wa lutim aranyi bene
pe. Wa kit bal mo
keken bene
pe nonge
i polo.

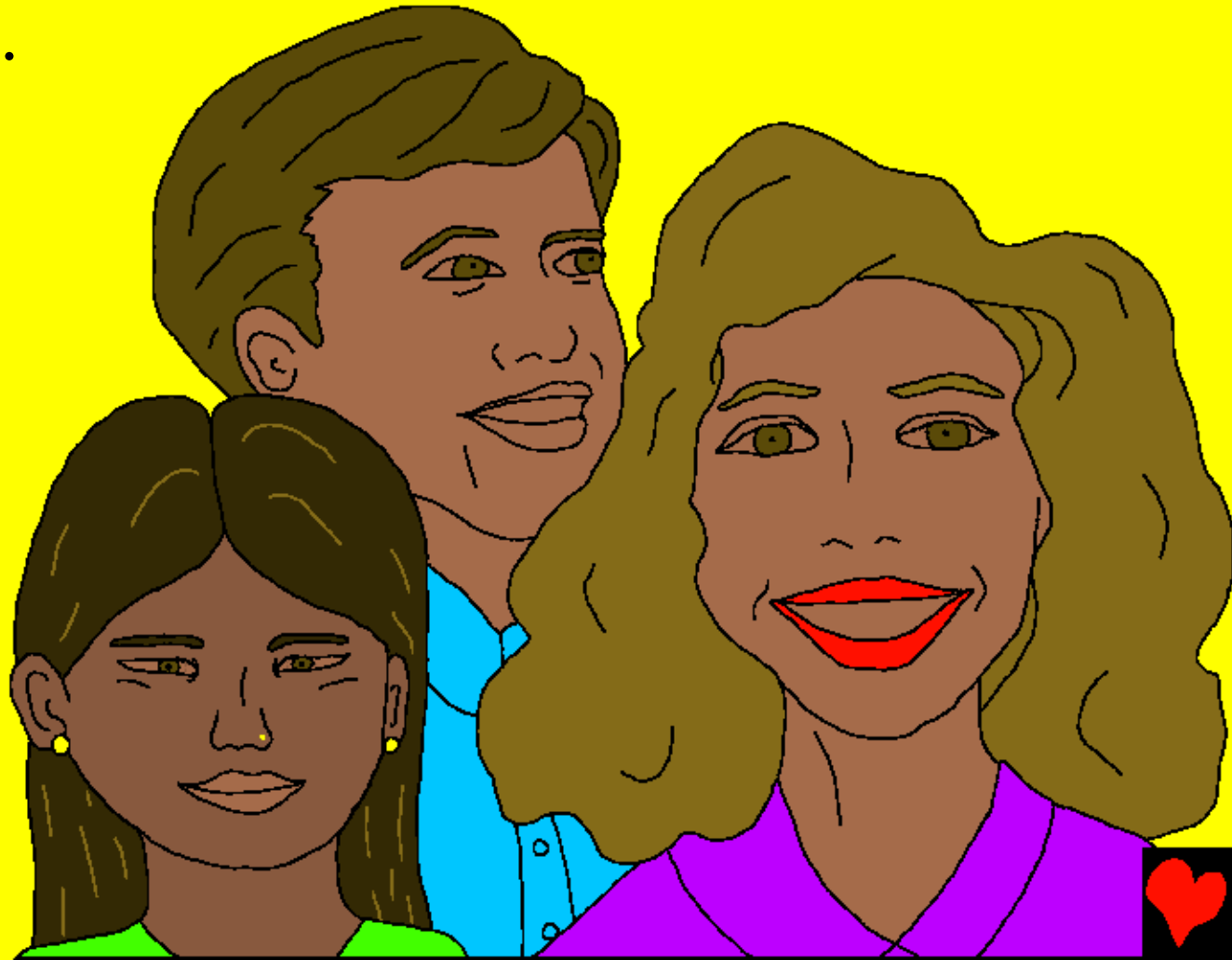


I Polo kunu bot Lubanga wa pig
wang bene pe. I kare mogo dono
gikok pi can madwong ma opong i
cwinygi. I polo Lubanga bidunyo
pig wang dano koko liweng.



To bene pe tye i polo. Jo pa Lubanga gibibedo bot
Lubanga matwal. Kit kumu mo keken, nyo koko, kadi
bed arem peke kunu. Two peke kunu, karama peke
kunu, wa guru lye
bene peke kunu.

I polo dano ma
gibedo bot
Lubanga
gibedo ki
yomcwiny
matwal.



Gin madong ber loyo ducu en aye ni, polo obedo kabedo pa awobe ki anyira [dok bene jo ma dongo bene bedo iye] ma guye dok bene guketo gengi iko Yecu me bedo lalargi wa Rwot gi bene. I polo tye buk ma gilwongo ni Buk. me kwo pa Wod Romo. opong ki nying dano. In mono ingeyo nying dano magicoyo iye? Dano ducu ma guketo gengi i kom Yecu. I mono nyingi tye iye?



Lok me akikki ma i Baibul ma mako Polo aye lok me
lwongo ki me jolo dano. "Cwiny maleng ki Nyako ger
gitye ka wacci 'Bin!' Ngat ma owinyo lok man bene
myero ogam ni 'Bin!' Ngat ma orwo neko myero obin.
wek ngat ma mito bene omat pii me kwo labongo
wel."



Polo, Gang pa Lubanga ma mwunya

Ododo ma i lok pa Lubanga,

nonge i Baibul

Jon 14; 2 Jo korint 5;
Niyabo 4, 21, 22

"Tito lokki miyo ceng."
Jabuli 119:130



Agiki



Gin atita man titi wa lok mabeco mada i kom Lubanga ma
ocweyowa kun mito ni inge en bene.

Lubanga ngeyo ada ni wan watimo jami maracu mapol, ma
en lwongo ni bal. Pwod me bal en aye to, ento Lubanga
omari twatwal pi meno ocwalo wode acel keken, Yecu, me
to i kom yatariya wek otyek pwod pi bali ducu. En Yecu
oto ka ocer ma kwo ka odok i Polo! Ka ada i bedo ki niye i
kom Yecu kun i lege ni otimi kica pi bali, ci en biweko bali
ducu! En bibino i in ci ibibedo kwo i en pi naka.

Ka iye ni man lok ada, wac lok man ki Lubanga:
Ai Yecu, Aye ni in Lubanga, ma oloke odoko dano me to pi
balla, ka dok ocer ma kwo. Tim ber i dony i kwo-na ci i wek
balla ducu, wek abed ki kwo manyen, wek i nino mo acel a
bed kwedi pi naka. Konya wek abed ma awinyo dogi kun
akwo piri macalo latini. Amen.

Kwan Baibul dok bene i lok ki Lubanga ceng jwi! Jon 3:16

