

Baibul pi lutino
keliwu



Polo, Gang pa
Lubanga ma
mwunya



Lacoc obedo: Edward Hughes

lakel lanyut obedo: Lazarus; Alastair Paterson

Layub obedo: Sarah S.

Lagony lok obedo: Mrs. Grace Orik Twikirize

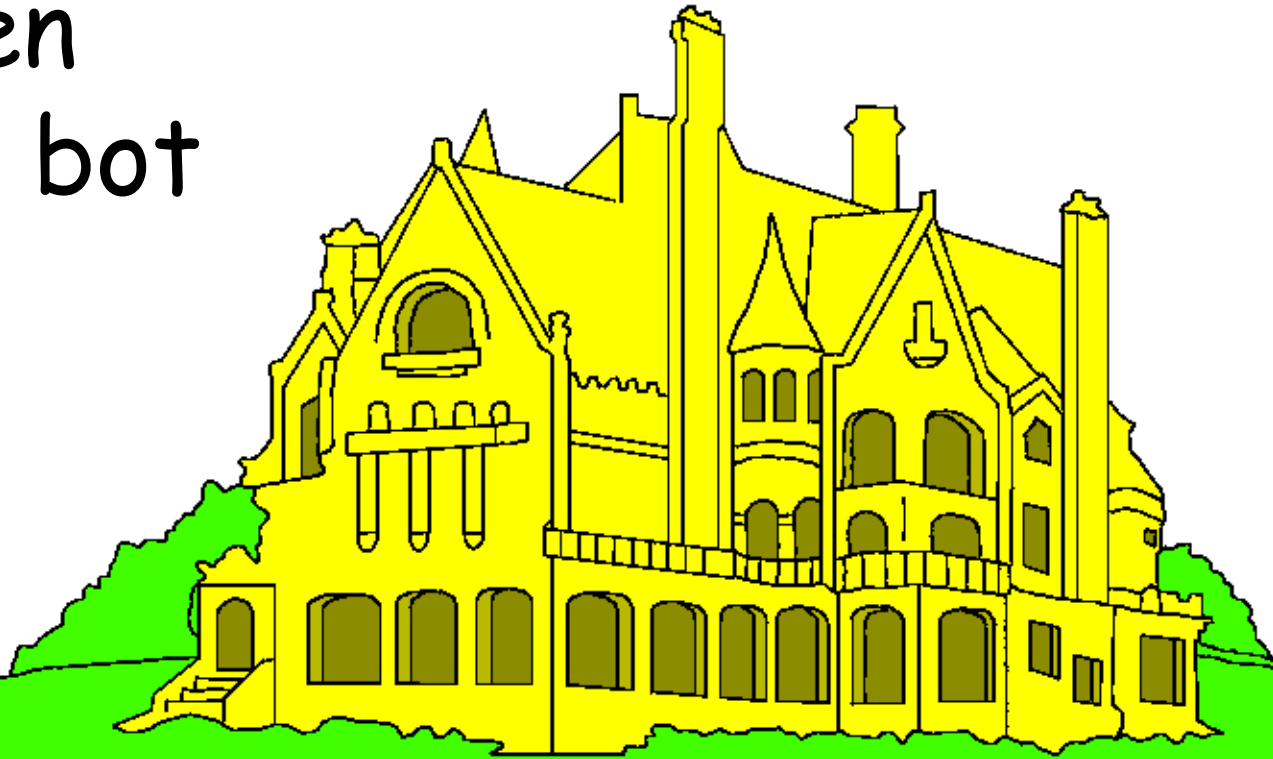
Ngat ma oyubo obedo: Bible for Children
www.M1914.org

©2020 Bible for Children, Inc.

Twero: Itye ki twero me tic ki gin acoya man,
ento i peke ki twero me cato gin acoya man.

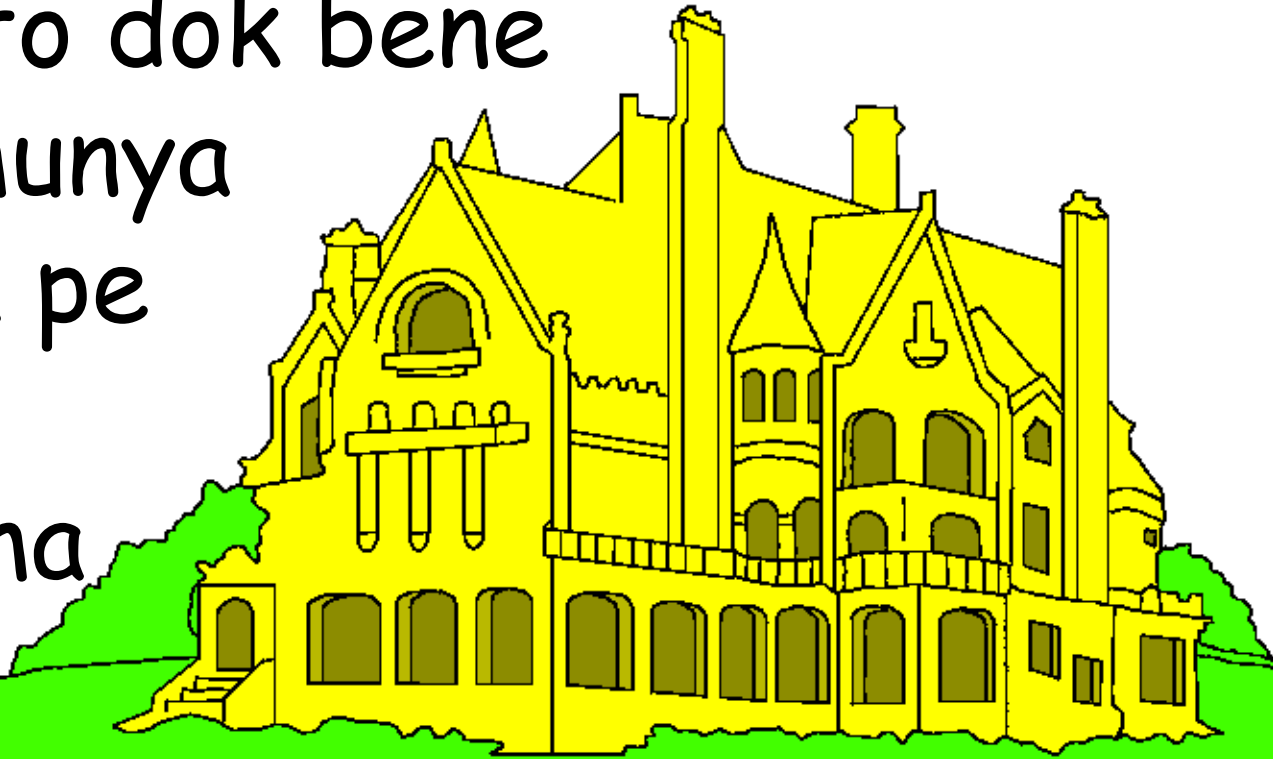


I kare ma Yecu
onongo tye makwo
i lobo kany en
otito pi polo bot
lukwena ne.



En olongo ni "Ot pa Abana", dok bene
otito ni tye iye odi ma pol ata kunu.

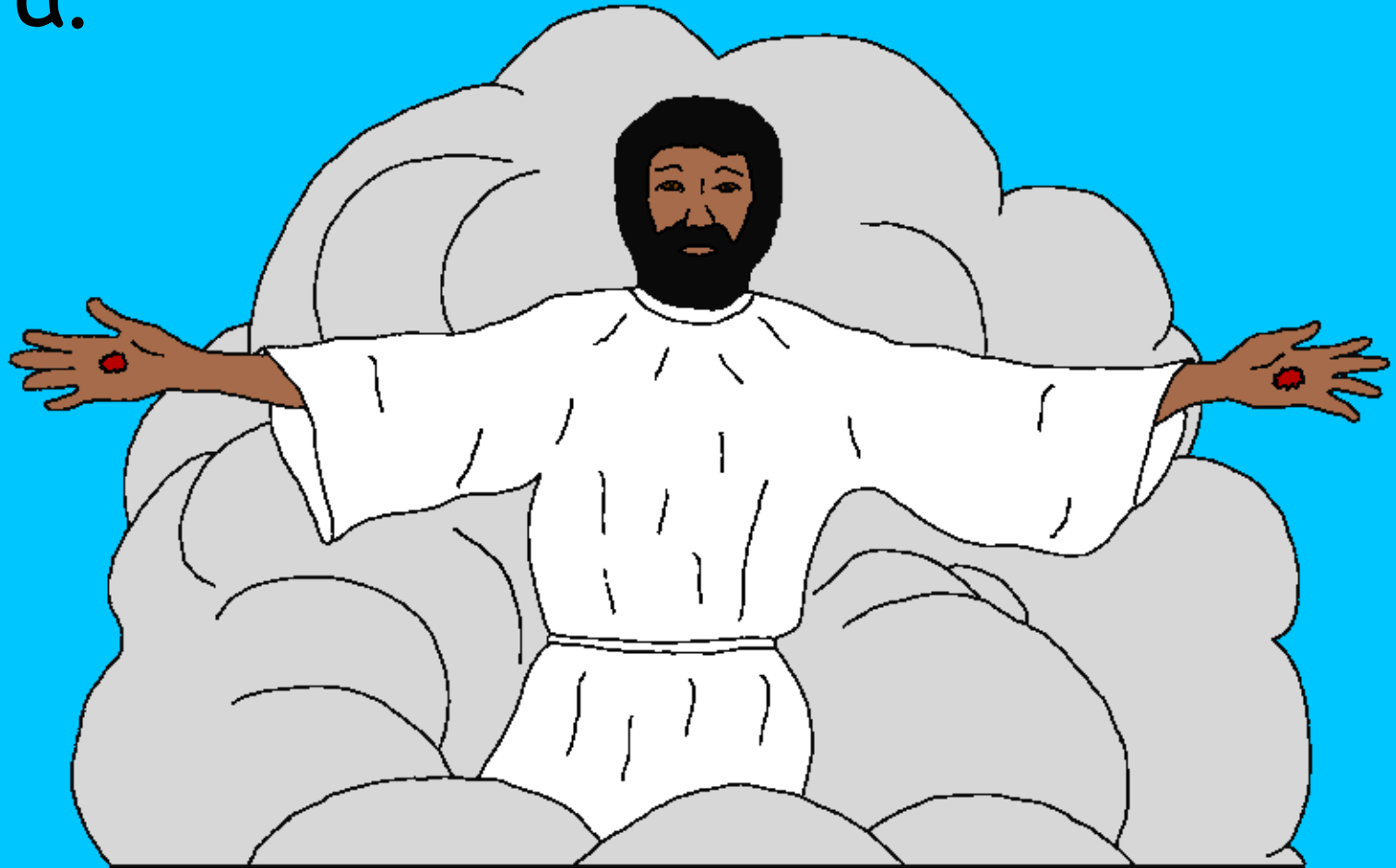
Odi magi dito dok bene
igi lac. Pol munya
twatwal dok pe
tye odi mo i
ngom kany ma



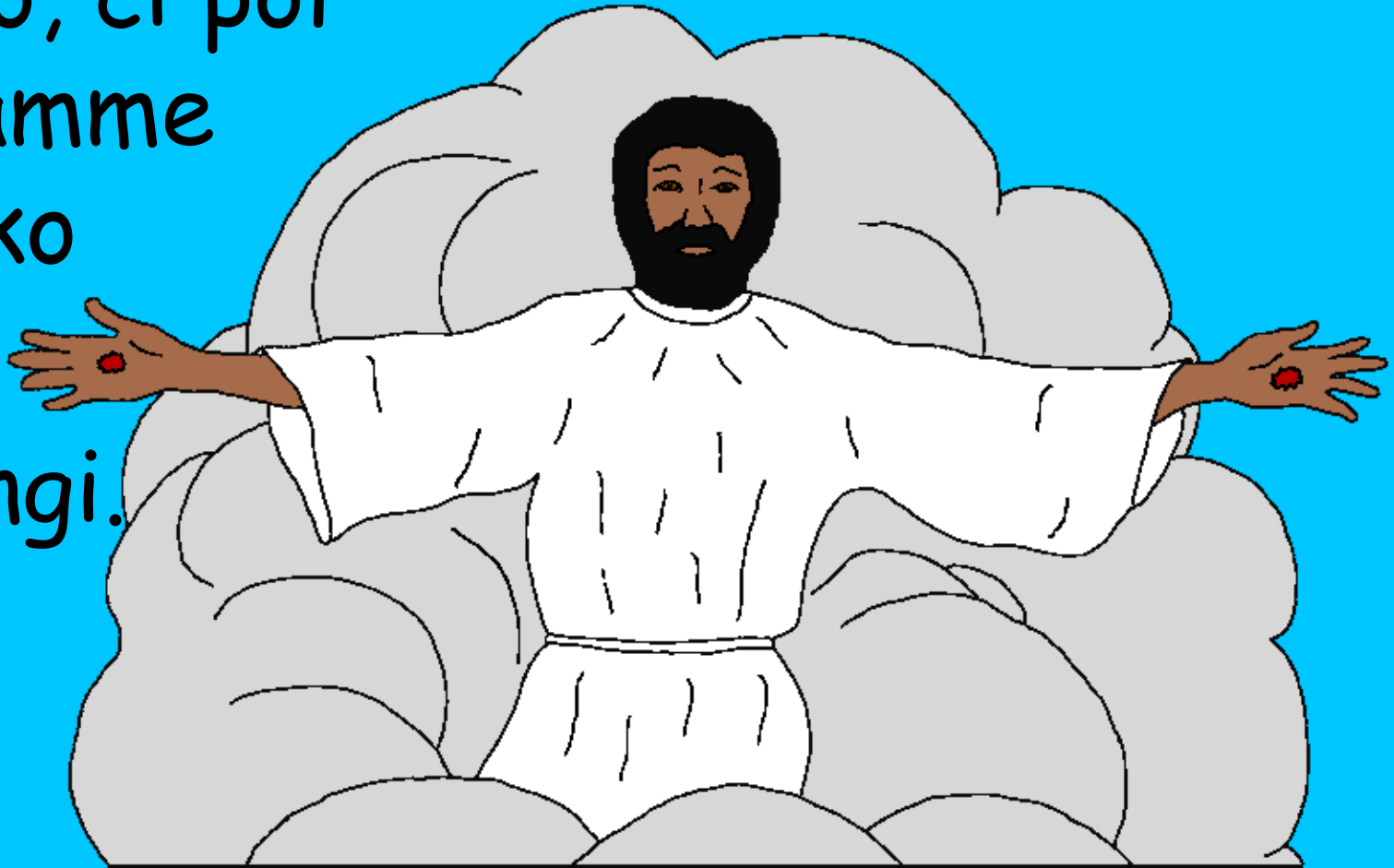
porre ki polo.



Yecu owaco ni, "Acito ka yubo ki
wun kabedo. ci ka ayubiwu kabedo,
Abidwogo cen ka gamowu wek wubin
bota."



Ada Yecu odok i polo inge cer ki i
lyel. Lukwenane guciko wangi malo
ka neno kit ma gitere woko malo i
polo, ci pol
ogamme
woko
ki i
wangi.



Nicakke i kare meno, lu Kricitayo gi
po gicikke pa Yecu me dwogo ka
gamogi woko. Yecu otito
ni dwogone bibedo
atura, ma nonogo
ngatimo pe ka
paro pire.



Tye paco bot
Rwot



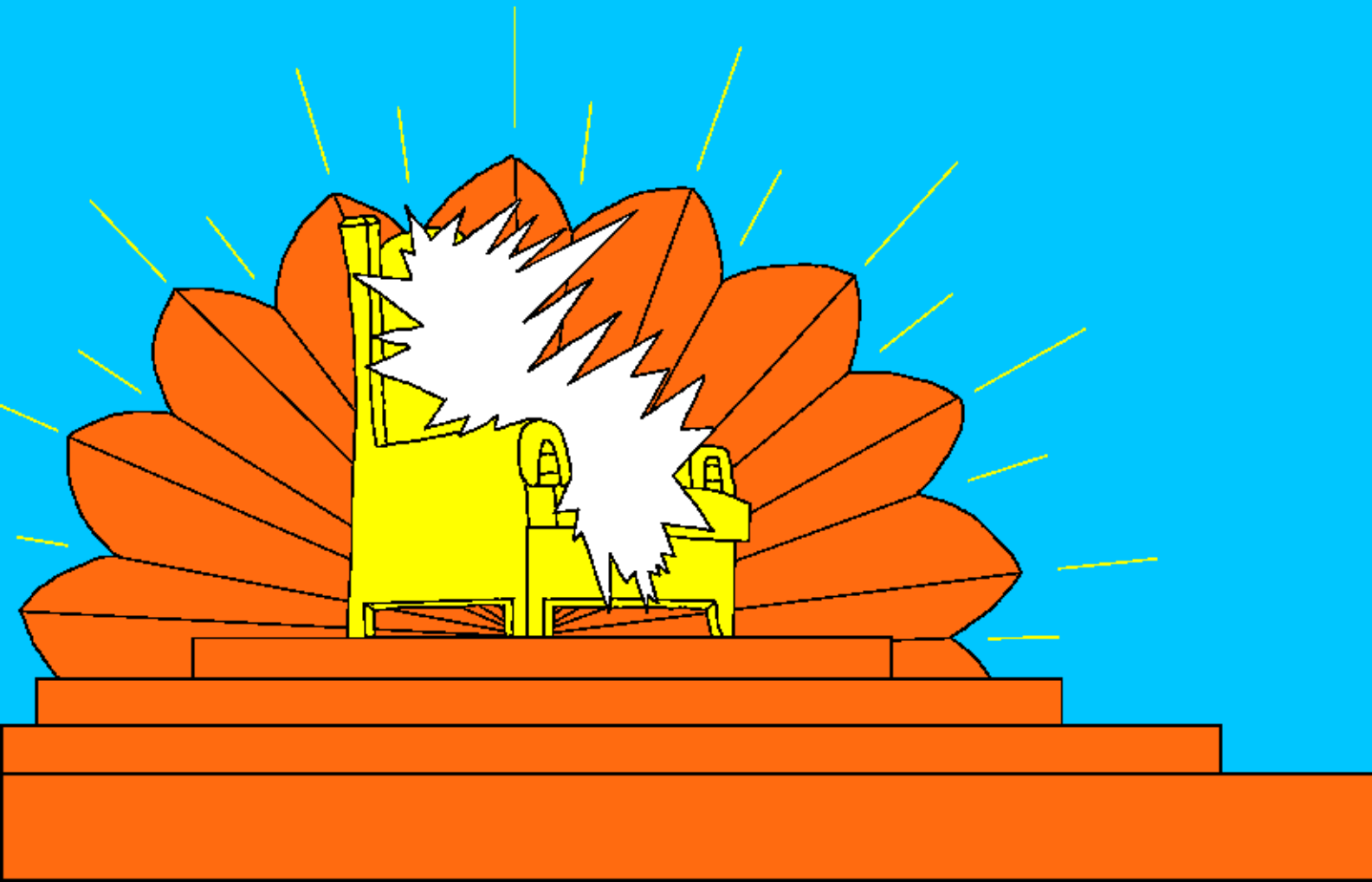
Lukricitayo ma guto ma en peya
odwogoni kono? Baibul wacco ni
jo muto gicito atir BOT
Yecu. Ka wabwoto
komwa woko nongo
watye paco bot
bot Rwot.



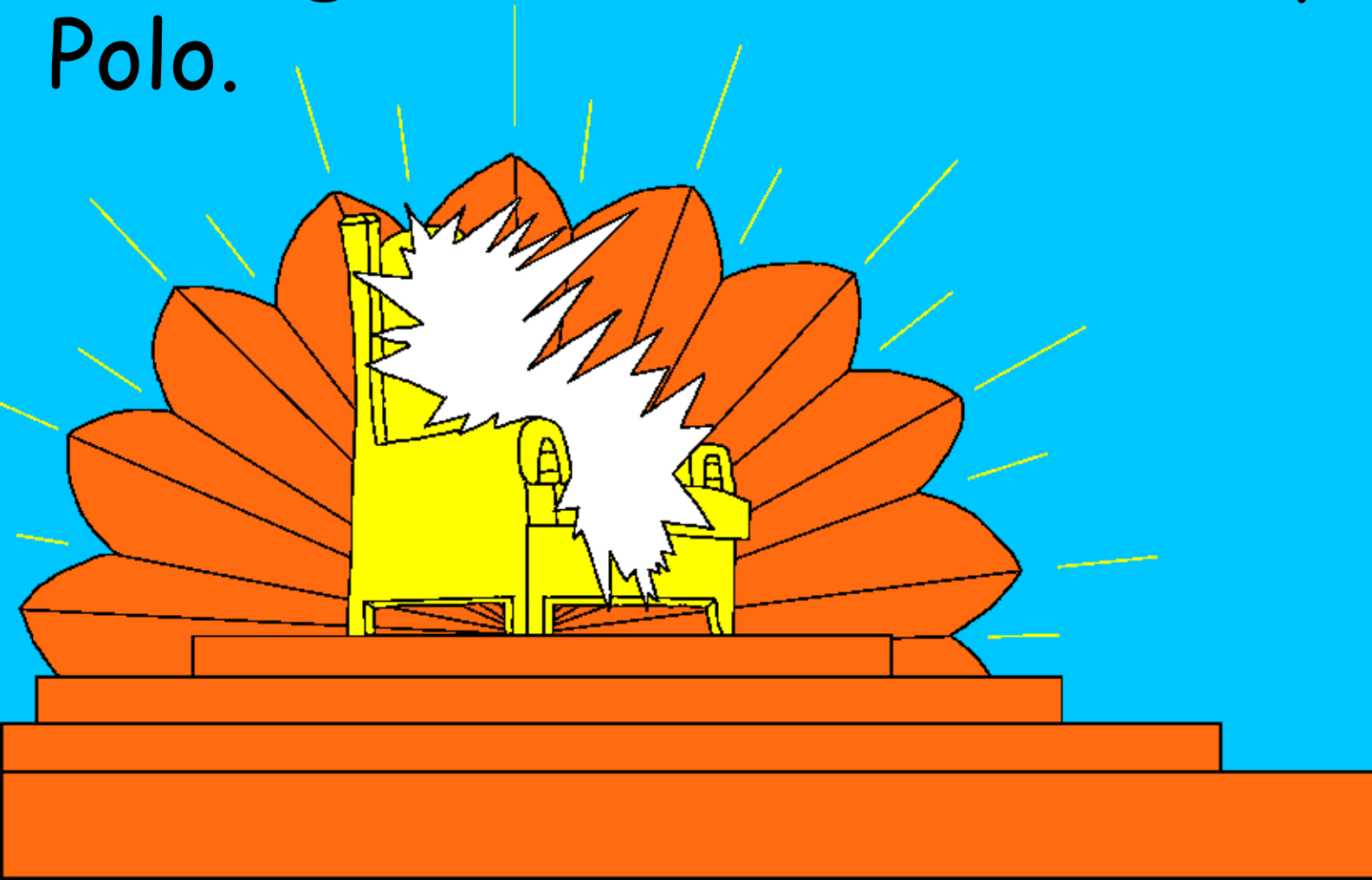
Tye paco bot
Rwot



Niyabo, ma en aye buk me agikki i
Baibul, titowa-ni polo ber atika.



gin me aura dong tye kitman ni,
Polo paco pa Lubanga. Lubanga tye
kaweng, ento kom ker mere tye i
Polo.



Lumalaika ki lwak ducu me
polo giryebe ka woro
Lubanga i polo. wa jo
pa Lubanga ducu ma
guto gucito
i polo
bene
giryebe
ka worre.



Lok magi nonge ikin wer ma giwero i
polo kunu: IN MYERO
DOK PI REMONI
IKOKO DANO PI
LUBANGA
MA
GUA
I ...

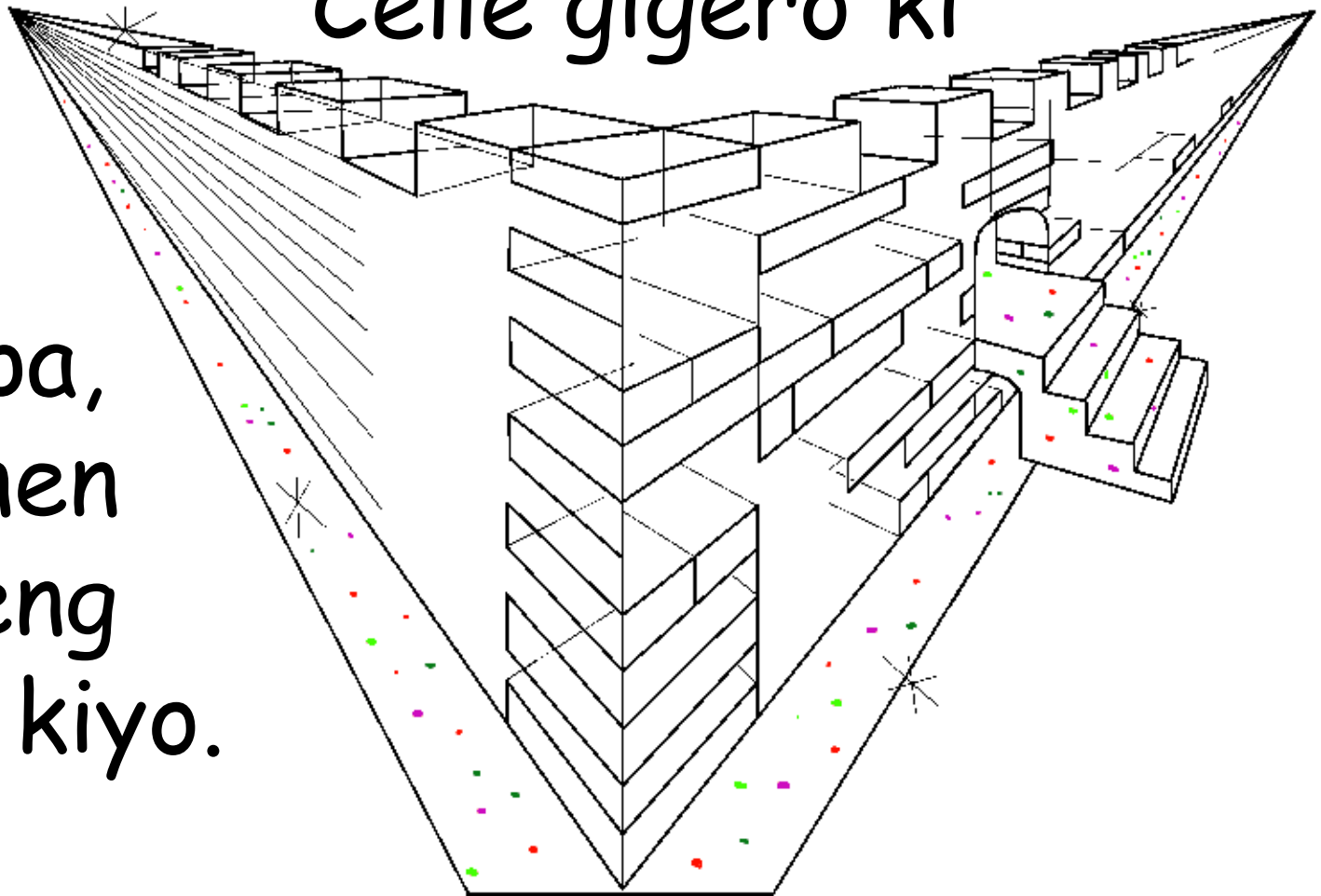


... KAKA MAPOL MAPATPAT KI
I LEB ROK DUCU CI
ILOKOWA WA DOKO
LUKER KI AJWAGI
PA LUBANGA.

[Niyabo
5:9]



Pot buk me agikki titoni polo obdo
"Yerucalem Manyen". Dit twatwal
ma cel gogo ne oyille wamalo likung.
Celle gigero ki

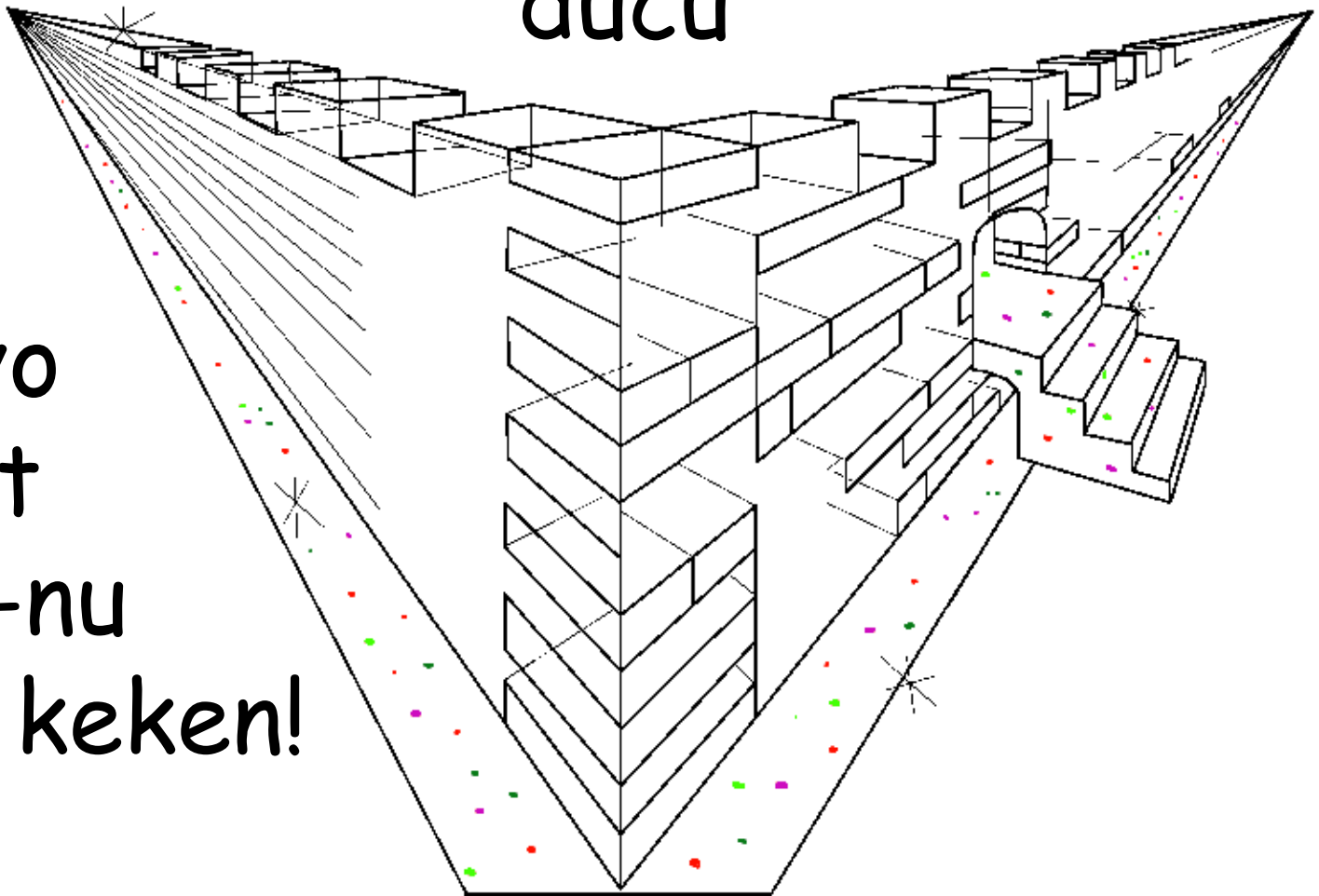


jacipa,
ma nen
maleng
calo kiyo.



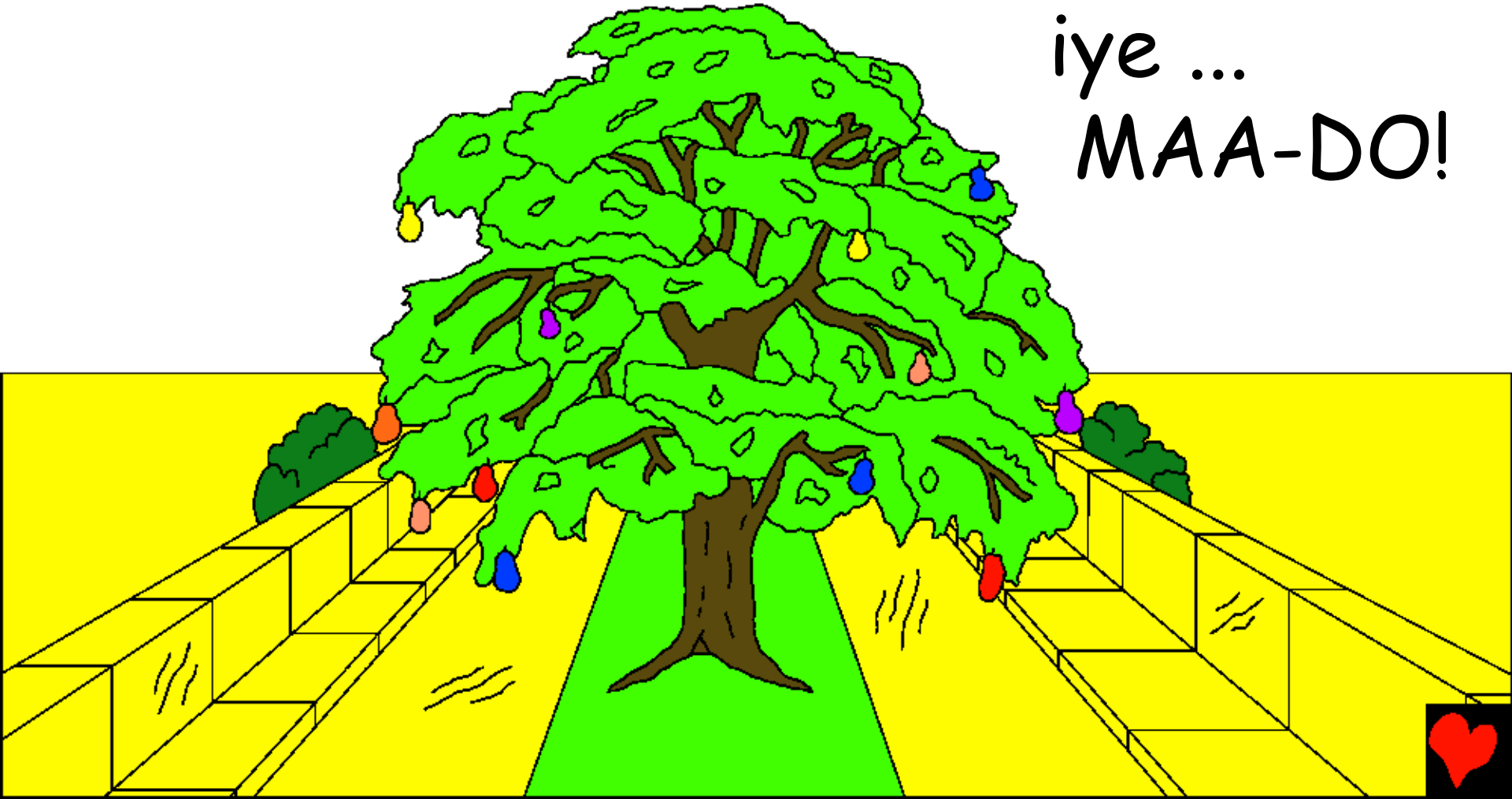
Guti-ne ducu gideyo ki litino
kidi me wel mapatpat, ma giryyeny
lidangdang. Wang kac acelacel
ducu

gitiyo
ki kit
tiko-nu
acel keken!

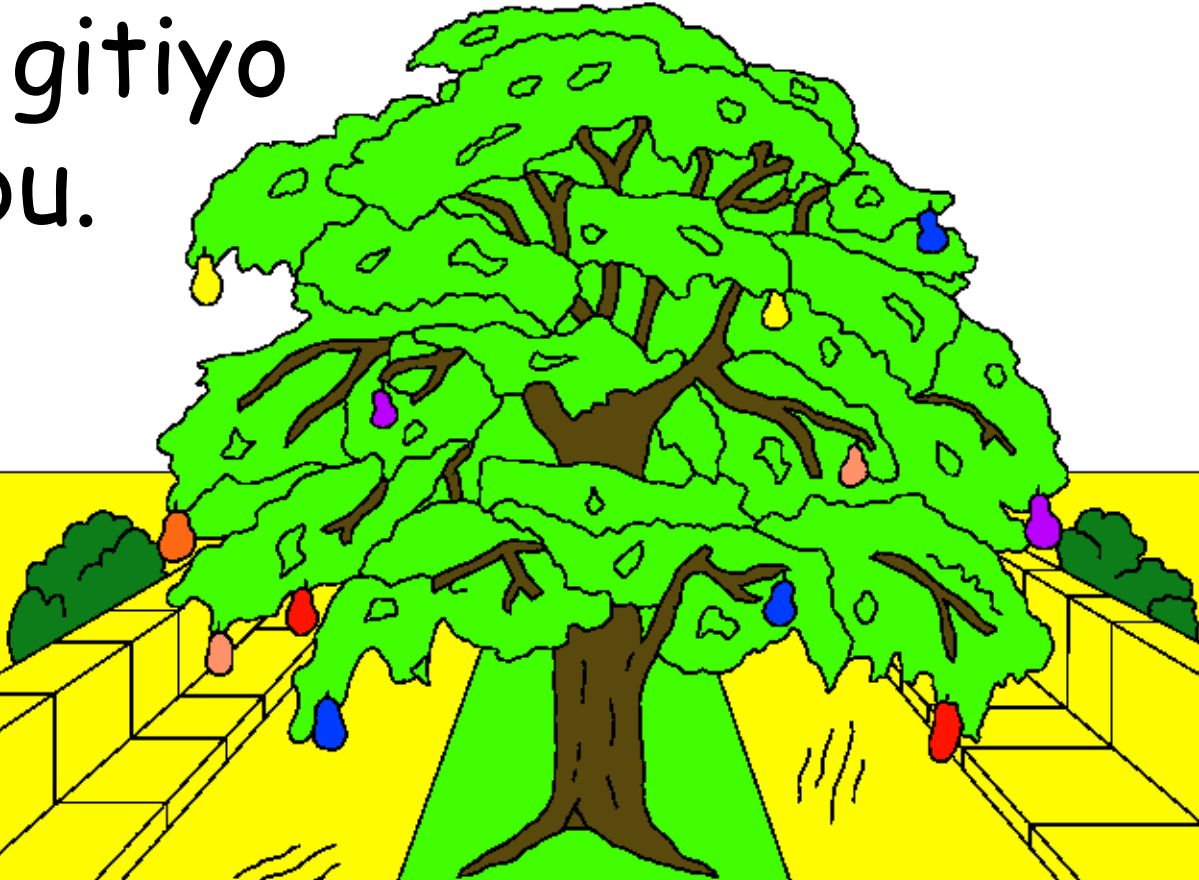


Wang kac magi maditoni duc ma
gitiyo ki kit tiko-nu pe bedo alora
matwal. Kong wacito wawotu wunu

iyē ...
MAA-DO!



I Polo dok ber dong loyo kamo duc.
Gang kal man giyubo ki Jabu maleng,
ki kiyo ma ryeny. wa gudo ne
weng gitiyo
ki jabu.



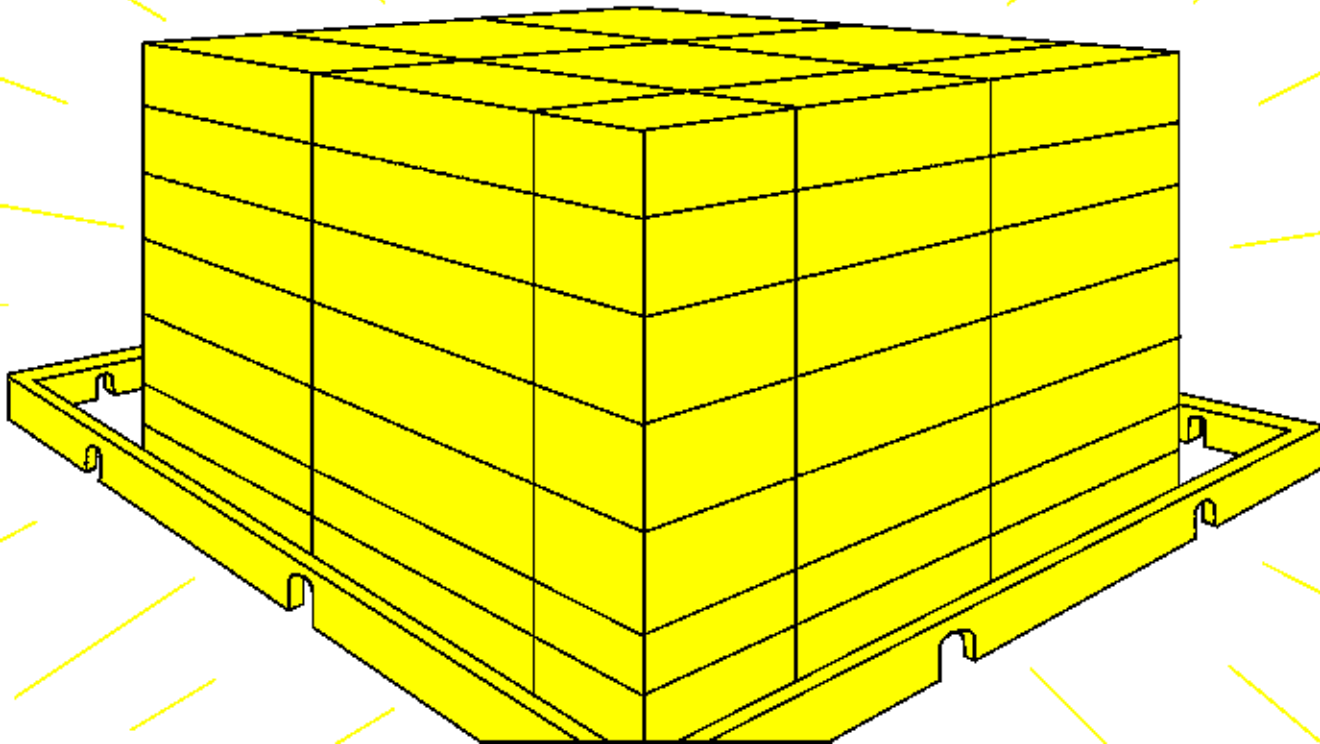
Kulu mamunya me pii me kwo ma mil
mol aa ki i kom ker pa Lubanga. I
dog kulu ryoryo tye iye yat me kwo,
ma yam okwongo nonge i poto Eden.



Yat man pire tek mada. Nyako nyige
mapatpat aparwiye aryo, ma nyak
dwe ki dwe. Pot yat meno obedo
me cango two pa jo me rok ducu.



I Polo, ceng ki dwe pe mitte me tar.
Tar me deyo pa Lubanga opongo
kaweng. dyewor peke kunu.



Wa lee ma i polo bene pat. Ginweng
gi mwol dok wor. Orudi ki litino
romo gicamo kacel. Wa labwor bene
camo lum calo dyang. Rwot owacci,
"Pe gibiketo ret nyo kadi nek i wi
got mera
maleng
ducu."



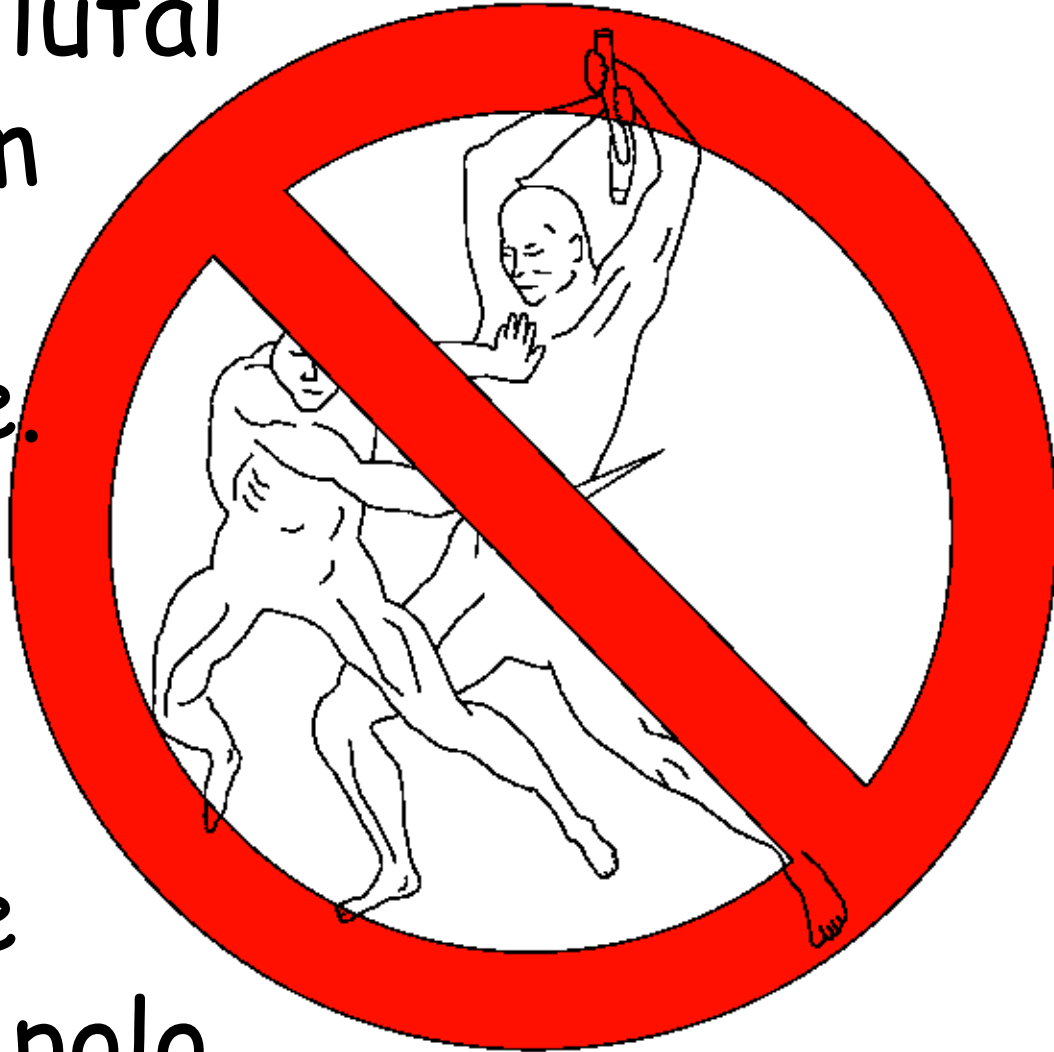
Ka waneno, ci wanongo ni jami mogo
pe nonge i polo. Lok me akemo pe
owinye. Kit
lweny mo
keken
nyo
worro
bene
pe.



Lagony mo me dogola bene pe, pien
lukwo bene pe nonge i polo. Lugoba,
luneko, lutal

wa lutim
aranyi
bene pe.

Wa kit
bal mo
keken
bene pe
nonge i polo.

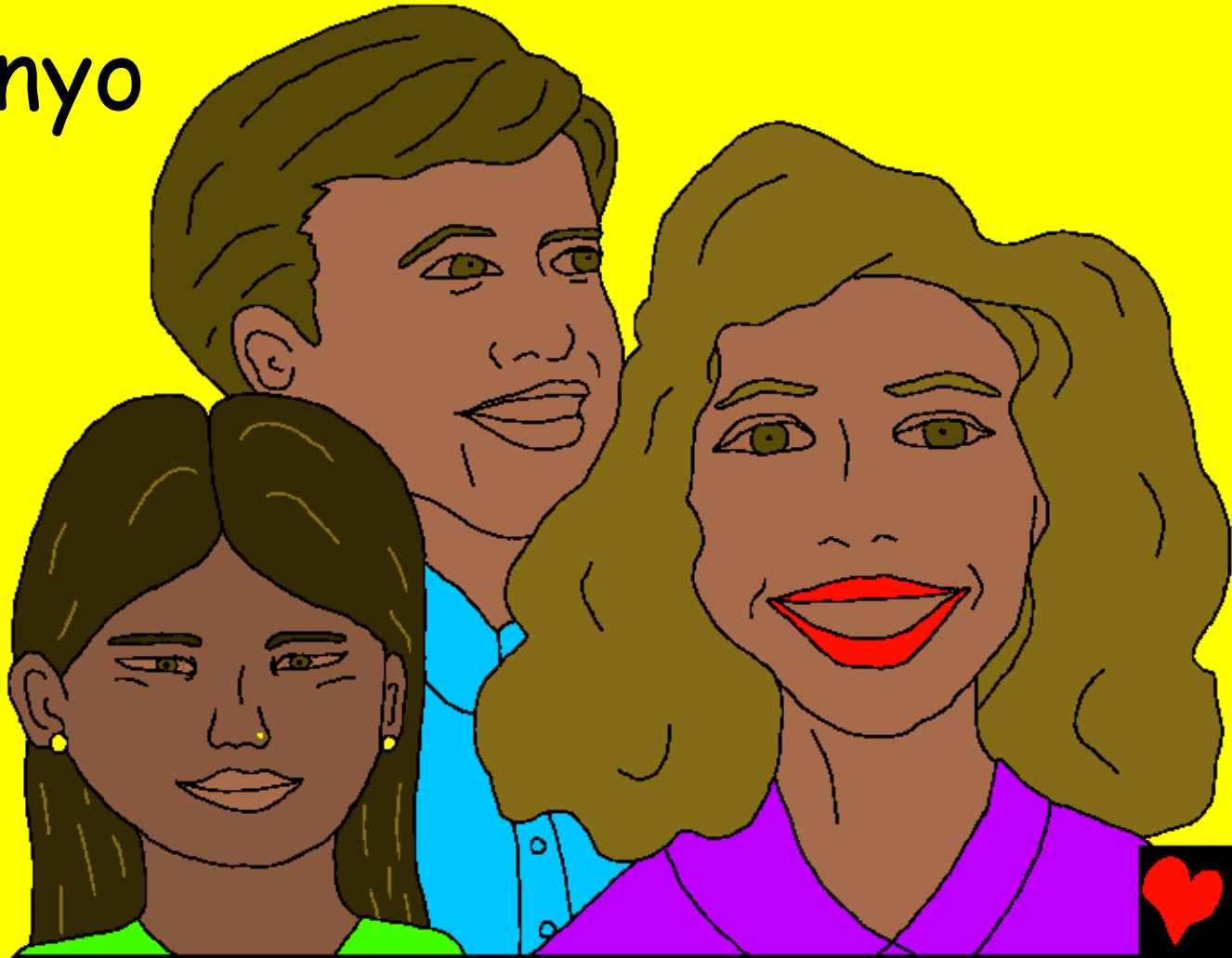




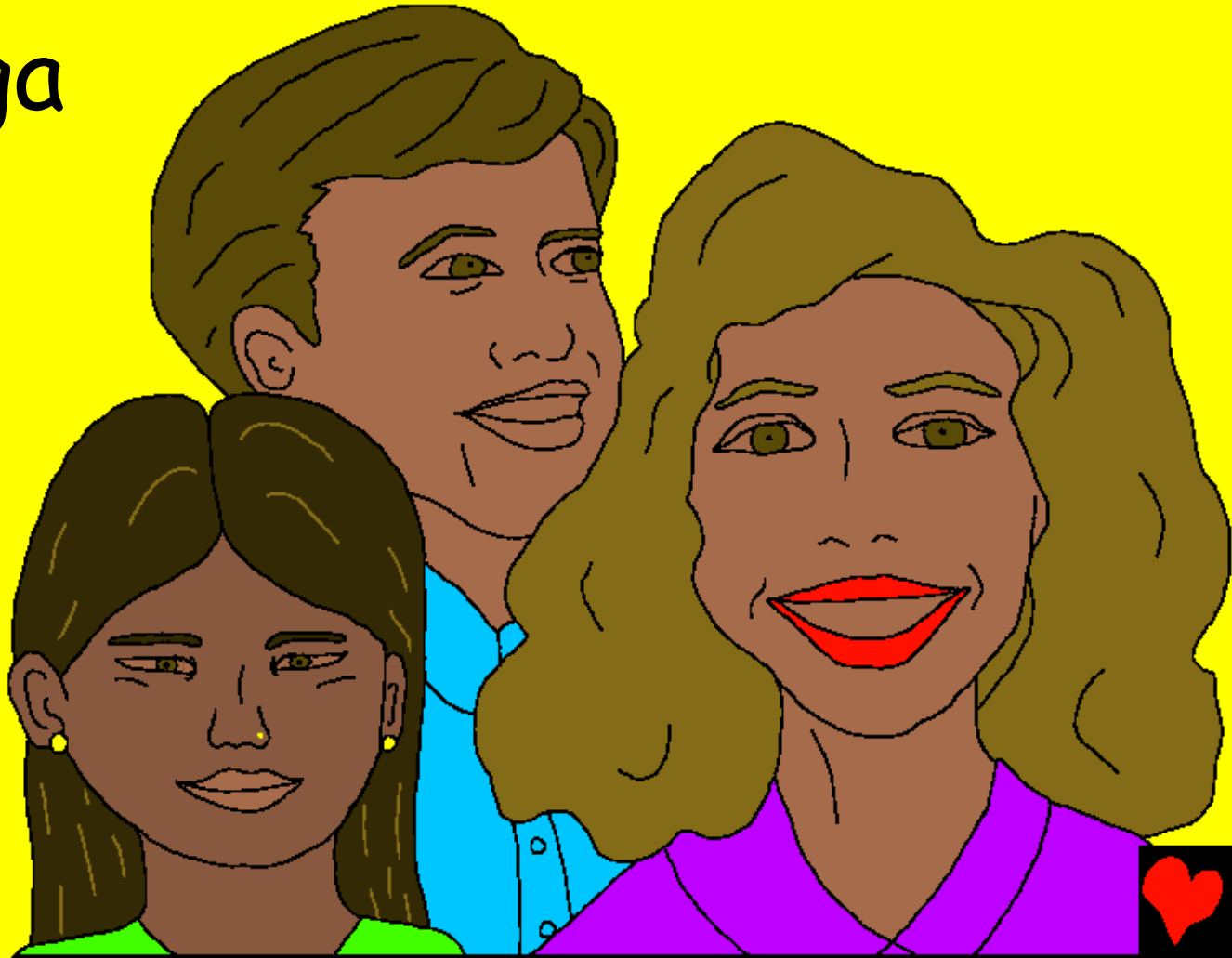
I Polo kunu bot
Lubanga wa pig wang
bene pe. I kare
mogo dono gikok
pi can madwong
ma opong i cwinygi.
I polo Lubanga
bidunyo pig wang
dano koko liweng.



To bene pe tye i polo. Jo pa
Lubanga gibibedo bot Lubanga
matwal. Kit kumu
mo keken, nyo
koko, kadi
bed arem
peke
kunu.



Two peke kunu, karama peke kunu,
wa guru lye bene peke kunu. I polo
dano ma gibedo
bot Lubanga
gibedo ki
yomcwiny
matwal.



Gin madong ber loyo ducu en aye ni,
polo obedo kabedo pa awobe ki
anyira [dok bene jo ma dongo
bene bedo iye] ma guye dok
bene guketo gengi
iko Yecu me
bedo lalargi
wa Rwot
gi bene.

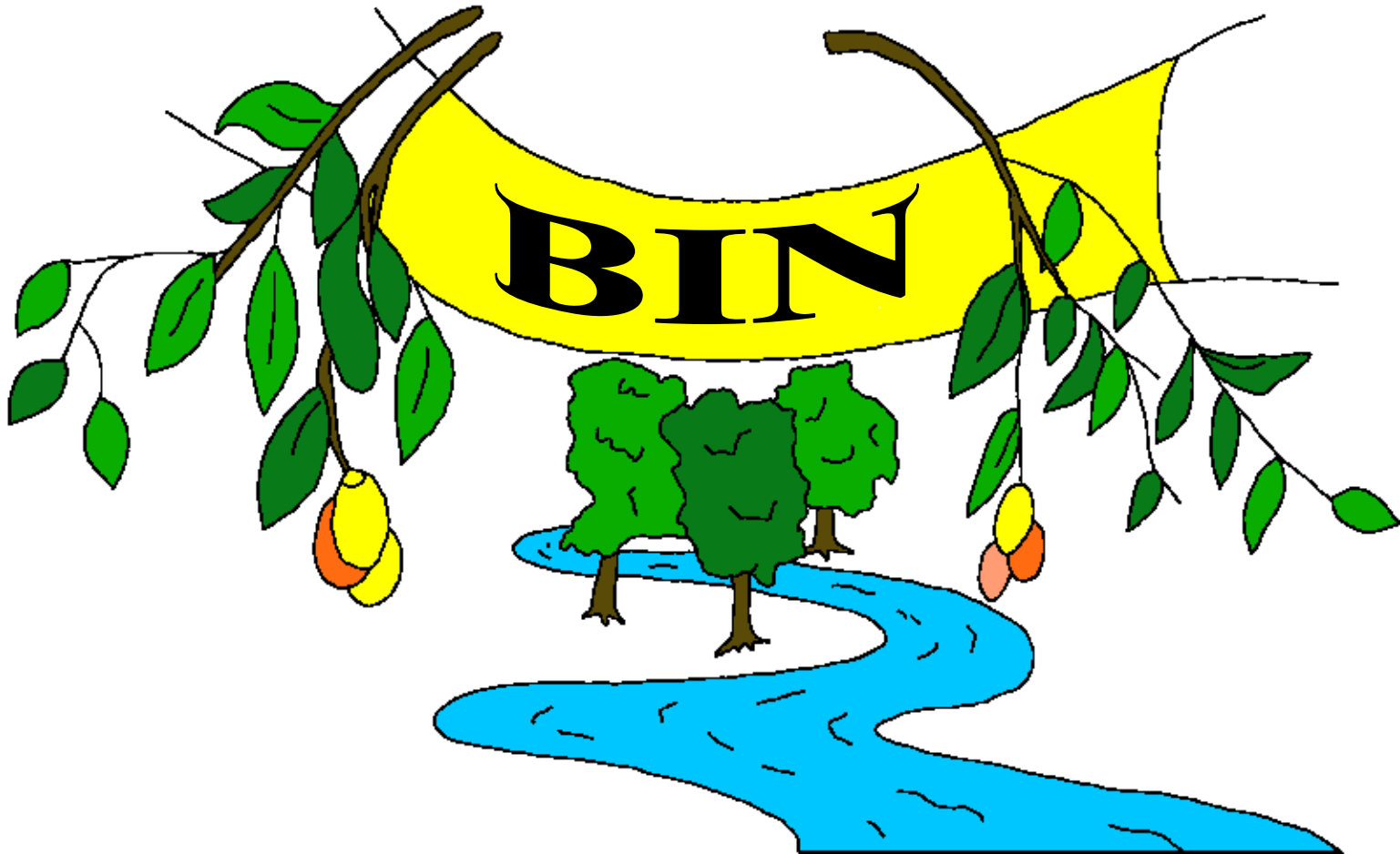


I polo tye buk ma gilwongo ni Buk.
me kwo pa Wod Romo. opong ki
nying dano. In mono ingeyo nying
dano magicoyo iye? Dano
ducu ma guketo gengi
i kom Yecu.

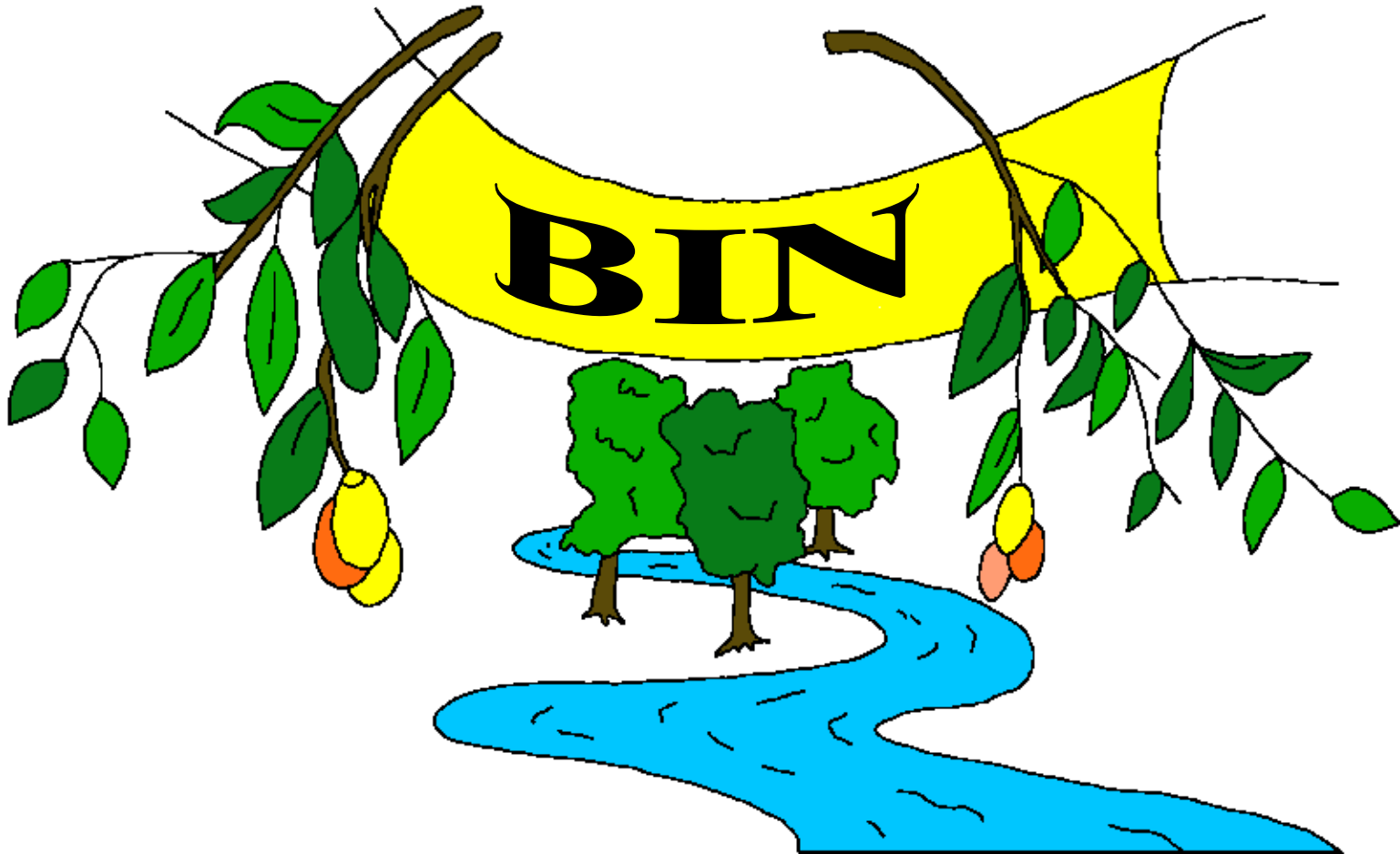
I mono
nyingi
tye iye?



Lok me akikki ma i Baibul ma
mako Polo aye lok me lwongo
ki me jolo dano.



"Cwiny maleng ki Nyako ger gitye
ka wacci 'Bin!' Ngat ma owinyo lok
man bene myero ogam ni 'Bin!'"



Ngat ma orwo neko myero obin.
wek ngat ma mito bene omat pii
me kwo labongo wel."



Polo, Gang pa Lubanga ma mwunya

Ododo ma i lok pa Lubanga,

nonge i Baibul

Jon 14; 2 Jo korint 5;

Niyabo 4, 21, 22

"Tito lokki miyo ceng."

Jabuli 119:130



Agiki



Gin atita man titi wa lok mabeco mada i
kom Lubanga ma ocweyowa kun mito ni inge
en bene.

Lubanga ngeyo ada ni wan watimo jami
maracu mapol, ma en lwongo ni bal. Pwod
me bal en aye to, ento Lubanga omari
twatwal pi meno ocwalo wode acel keken,
Yecu, me to i kom yatariya wek otyek pwod
pi bali ducu. En Yecu oto ka ocer ma kwo
ka odok i Polo! Ka ada i bedo ki niye i kom
Yecu kun i lege ni otimi kica pi bali, ci en
biweko bali ducu! En bibino i in ci ibibedo
kwo i en pi naka.



Ka iye ni man lok ada,
wac lok man ki Lubanga:

Ai Yecu, Aye ni in Lubanga, ma oloke
odoko dano me to pi balla, ka dok ocer
ma kwo. Tim ber i dony i kwo-na ci i wek
balla ducu, wek abed ki kwo manyen, wek
i nino mo acel a bed kwedi pi naka. Konya
wek abed ma awinyo dogi kun akwo piri
macalo latini. Amen.

Kwan Baibul dok bene i lok ki Lubanga
ceng jwi! Jon 3:16

