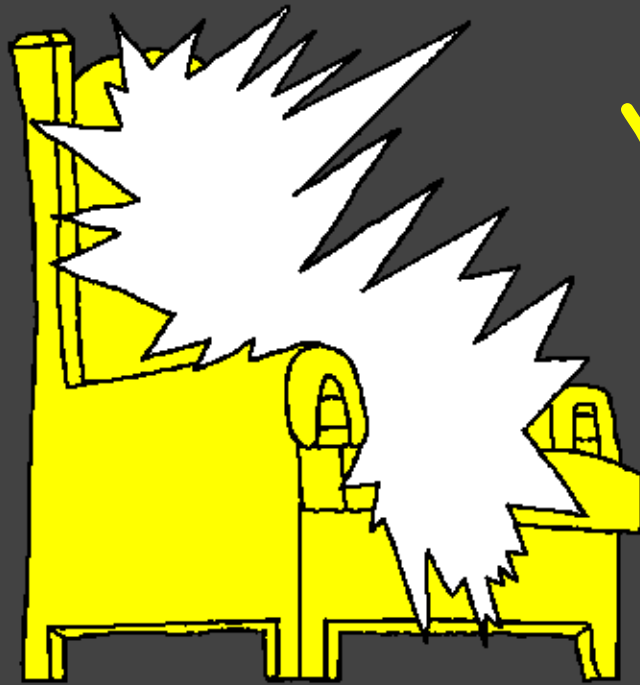


[www.BibleForChildren.org](http://www.BibleForChildren.org)



# Yohanese 14



Yesuse Ibeteke loko Eni maka luluaru be, "Imi rilami yake. Imi hlaleke loko Alla kai hlaleke loko Au lekwe. AmaKu Eni lumare otoi bokala kena rue. Au keu lokole leke Au aknekae otoi ete imi."



"Au beteke mere ete imi le imi otoi mere eme titinai.  
Sepo Au aknekae imi otoi je peneka, pine Au leu kena  
rana imi leke ite keu loko otoi mere leke otoi rebe Au  
rue kenare ete mere lekwe imi me."



Kwali betaya pusumi, au Yohanese. Ite pusumare esa kena hlaleke loko Yesuse Kristuse eti ite supu susate po ite tahane lale neka.

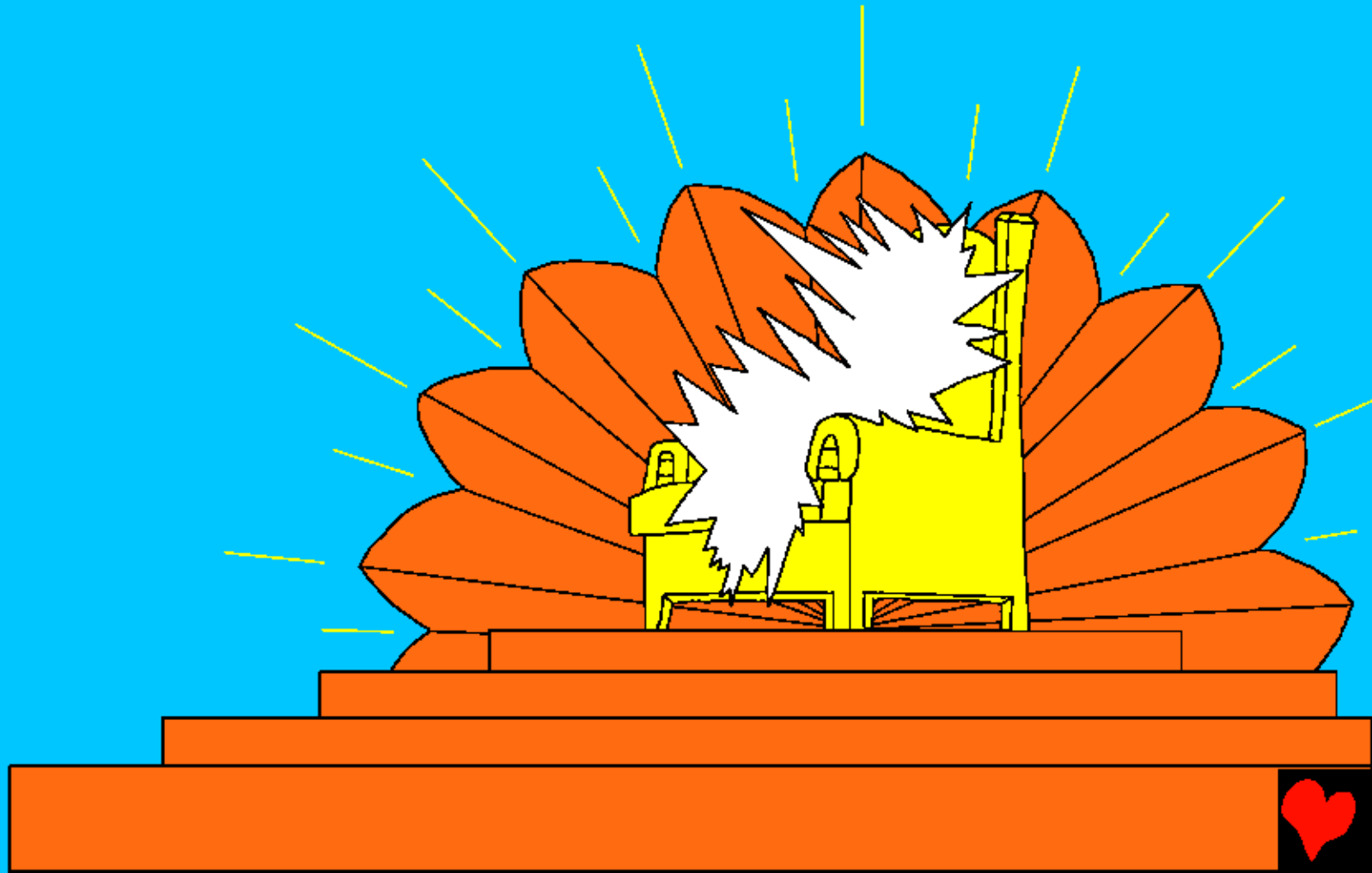


Itere, Alla Ikbasaē ite saka kamale. Kai ite  
lalema ktili kena namake Yesuse. Au supu  
hetie mei nusa Patmose le Au lepae Alla

Eni lepata rebe Yesuse  
Ibetekelu ete aure.



Eleki Alla Eni Rore Ikbasae au sosoli eleki au selu  
otoi maka rue kena pleta sae me surga kai Ile sae  
Iruue me otoi maka rue mere.

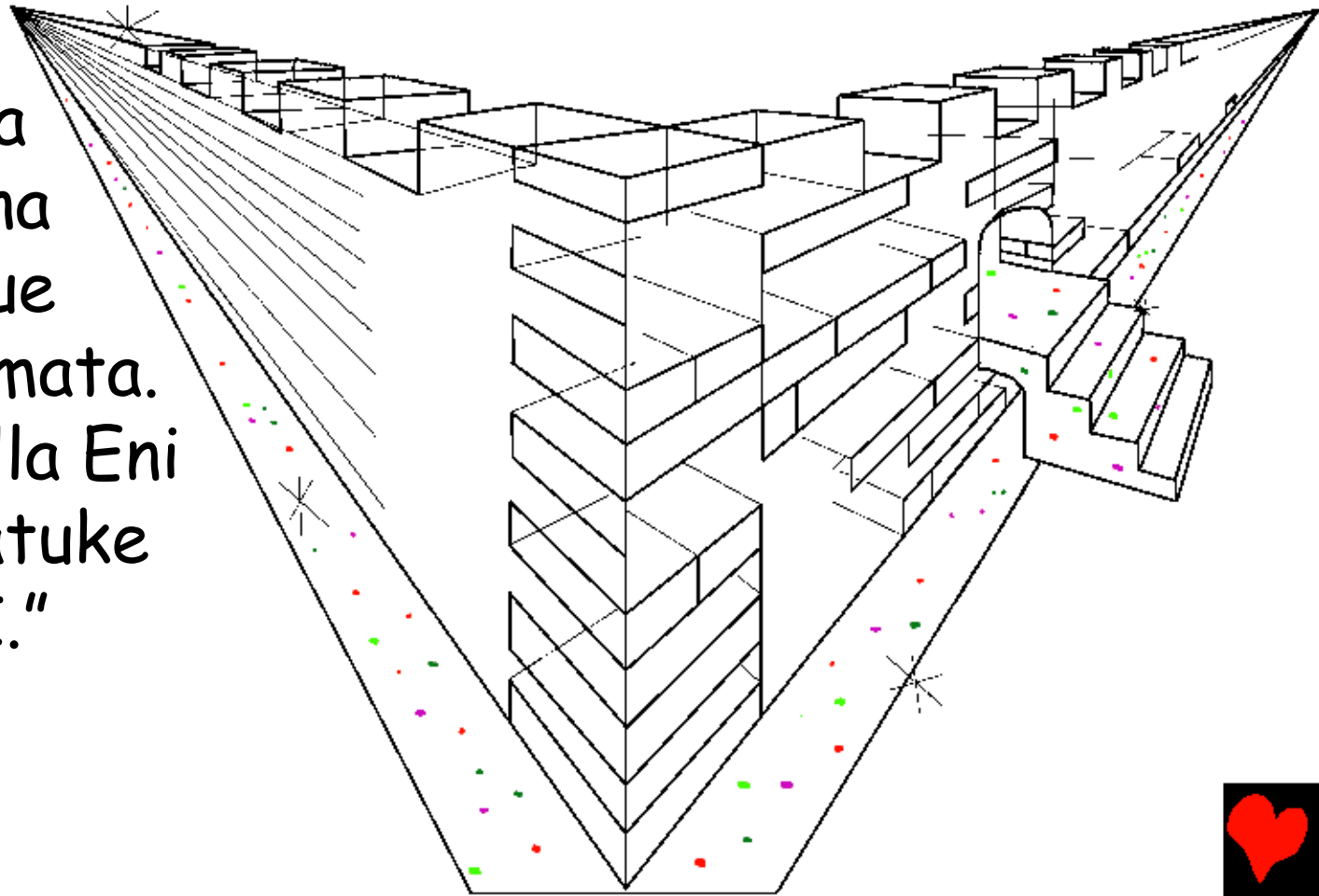


Kai au lene pusue tanei kwanala ndete surgare kai  
rebe mei nusare kai tamata matala mpe nusa meije  
esi lebuije kai yelu ndau meite  
pususi menani be, "Ile rebe Irue  
kena otoi maka rue kena pletare  
kai ete Domba Anaije, ite isikesi,  
ite holmatesi, ite  
ono esi nane  
ela, kai ite  
alenake esi  
kbasaru  
eti pela!"



Eleki au selu kota moli, rebe kotiele Yerusalem  
beluke kai erulu bei ndete surga, mere Alla Ionoe.  
Kota mere ehita kena hitate elake bei Tuhane Alla  
saka bina rebe selui hita le eni pakianaru le iono kena  
ikai kai mokwai sae me. Eleki au lene na elake

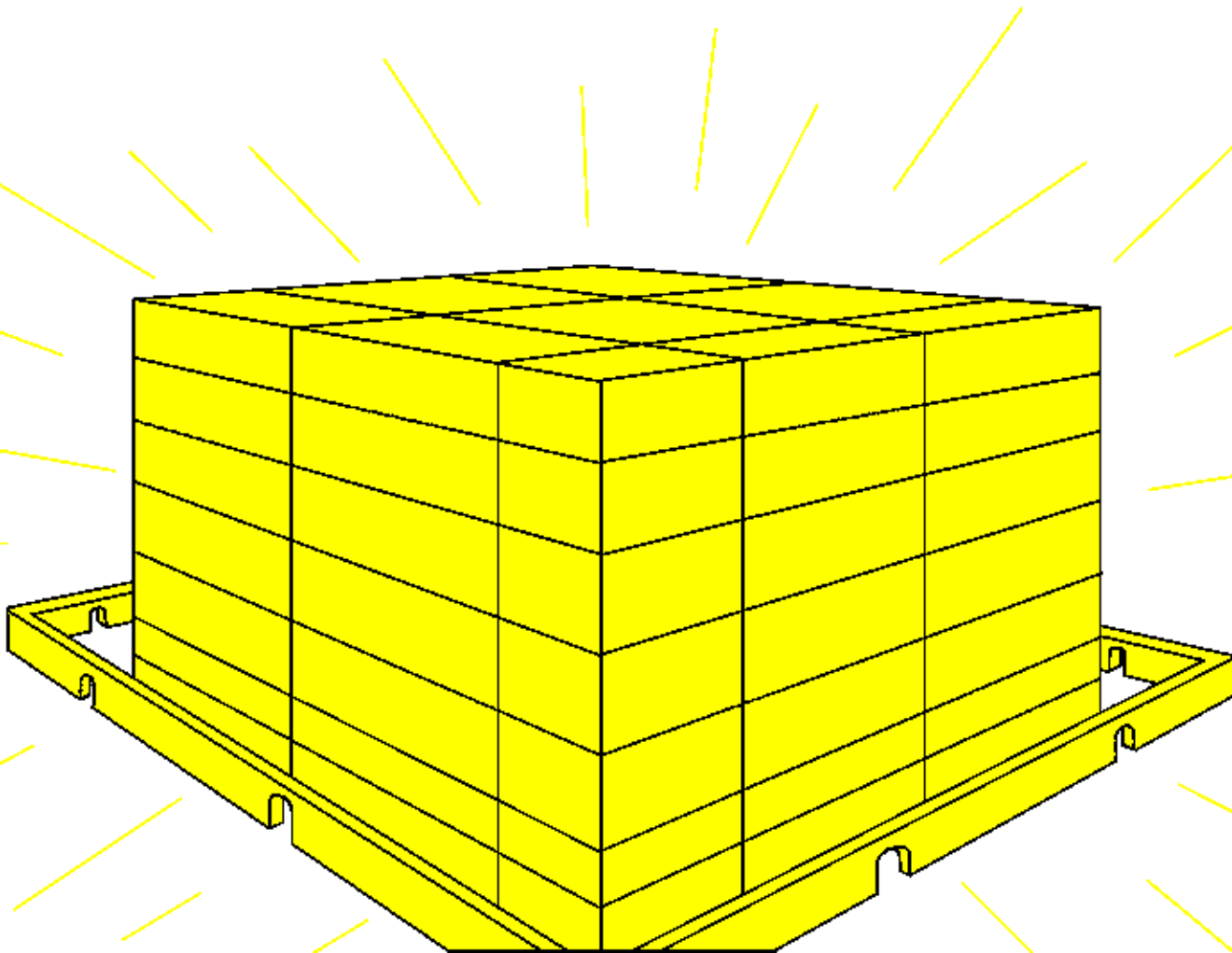
bei otoi maka  
rue kena pleta  
mere be, "Kena  
meije Alla Irue  
sakesa kai tamata.  
Hoko siere Alla Eni  
tamata kai batuke  
esi tatu lokoI."



Malekate mere iaseluke kwele rebe eono tamata  
ikwanare lekwe. Kwele mere endina titinai saka kaca.  
Ebele bei Alla Eni otoi maka rue kena pleta kai Domba  
Anai mere, ekeue lalane esi tlaije me kota mere.



Kota mere perlu lematai pise bulane ehita moneka, le  
Alla Eni hitate elake ehitae kai Domba Anai mere  
Iono saka lampu ete kota mere.



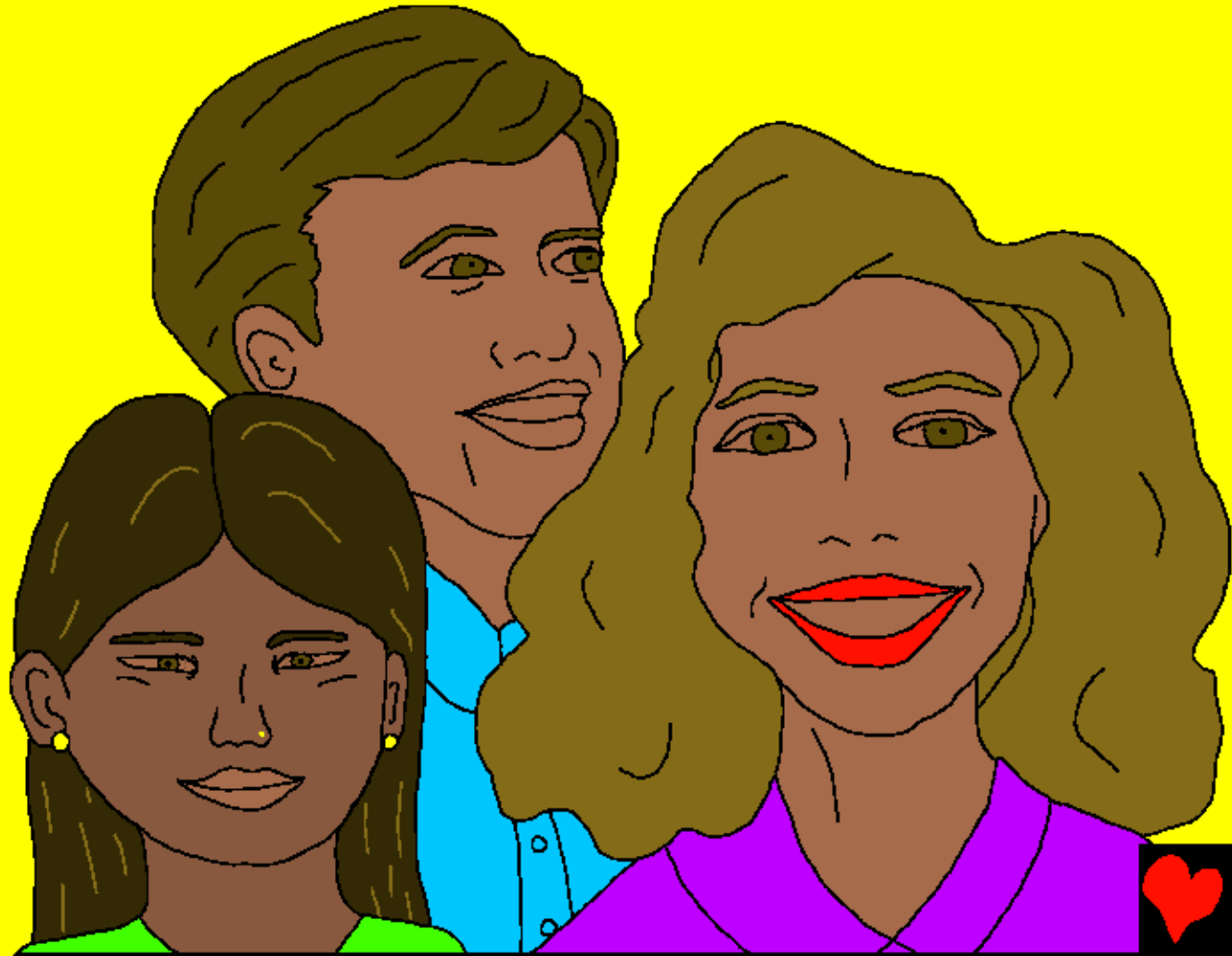
Po tamata rebe esi ono yelu rebe  
uandopoke nanakwalare, pise  
tamata rebe esi tatu loko  
yelu rebe Tuhane more,  
esi supu kusu kota  
mere mo. Tamata  
rebe supu kusu kota  
mere esi laleije  
batuke tamata rebe  
eni nane lekie me  
Buku Tamata  
Kwanale, Domba  
Anaije Eni  
bukure.



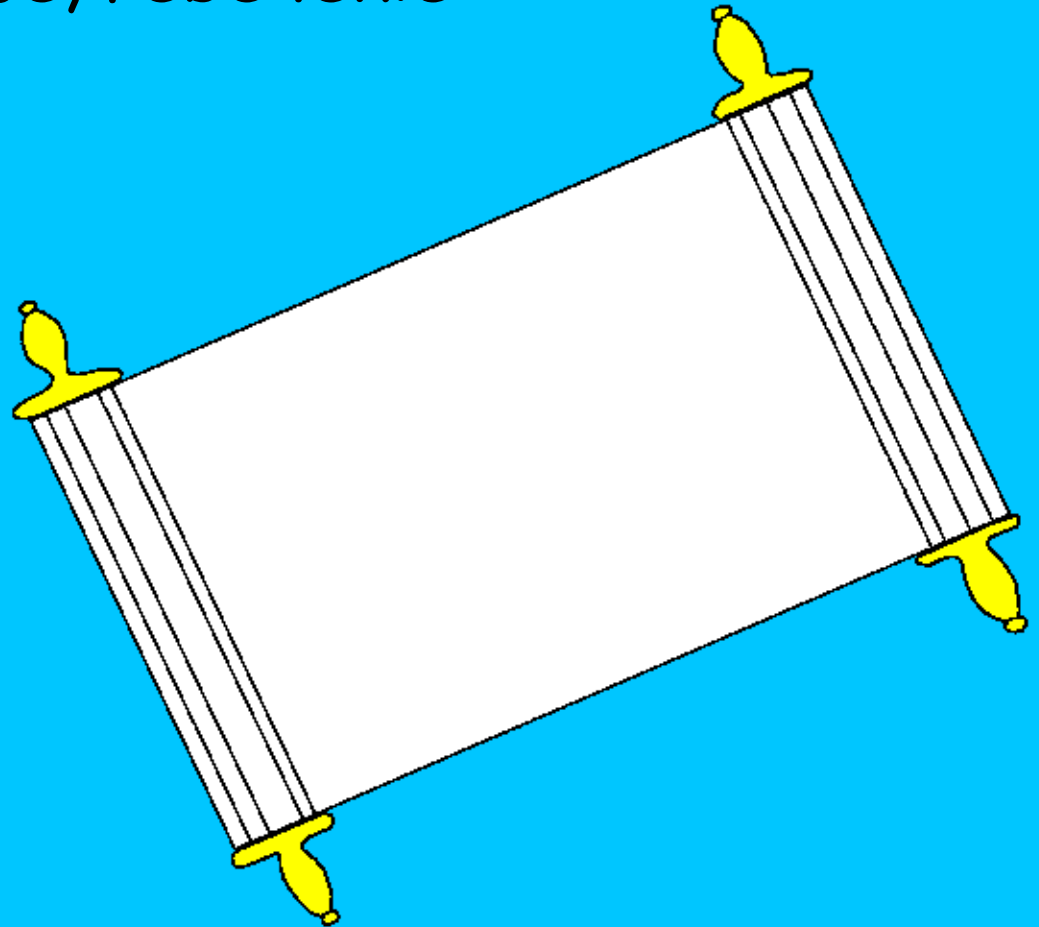
"Iono esi supu susate sasaisa  
moneka hoko esi rani kwale  
moneka. Sae imata moneka. Sae  
isusa moneka pise kerake moneka  
le yelu rebe akmena ite supure,  
pamuli meije sae moneka."



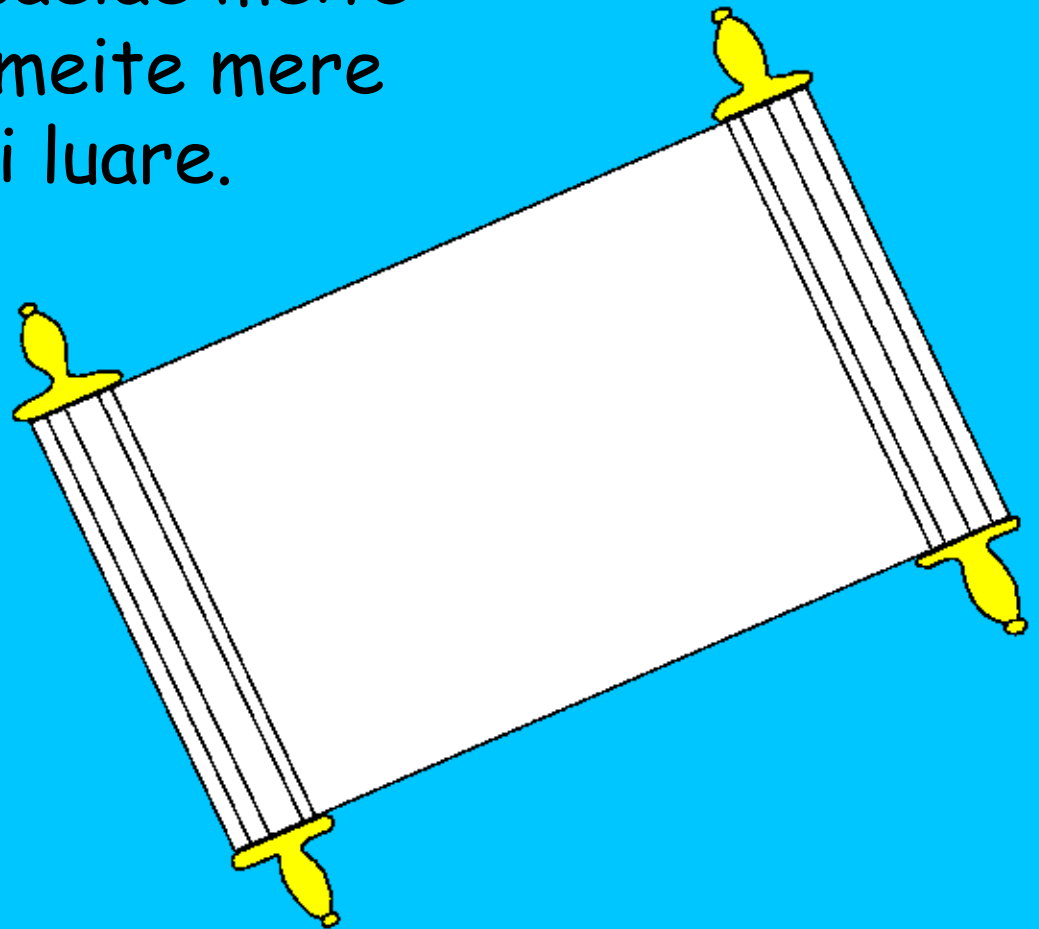
Me kota mere Alla Ikutuke sasaisa moneka. Alla kai  
Domba Anai mere Esi otoi maka rue kena pletare  
namake pine eme kota mere. Kai Eni makerikaru esi  
tatu lokoI, kai esi  
seluI. Kai Eni  
nane lekie  
me oalalesi  
supleuke  
matabului  
babaisu.



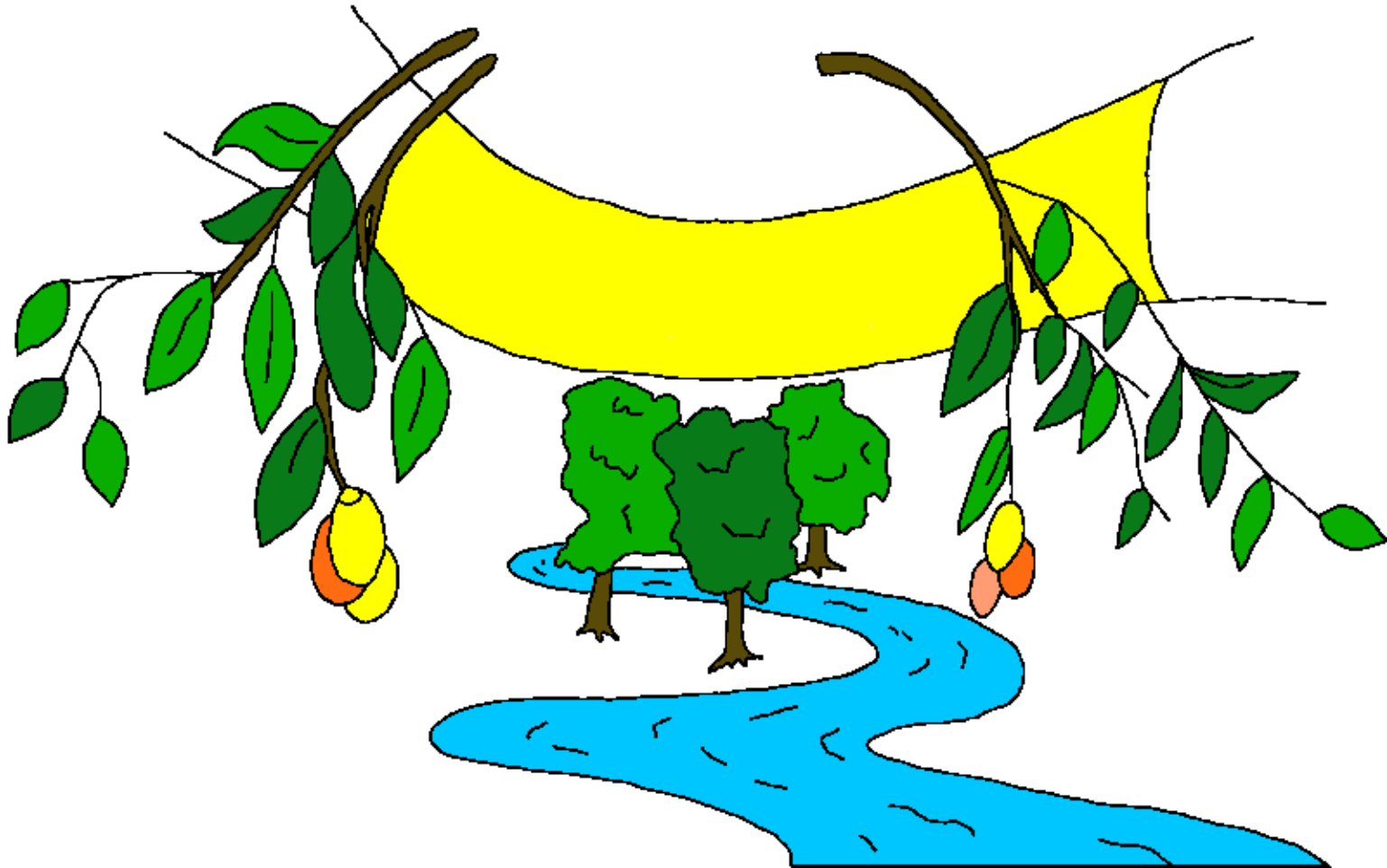
Kai au selu tamata matale elake tone esi kele me otoi  
maka rue mere esi oaije. Eleki bukuaru baেকে. Eleki  
buku makete me baেকে, buku mere Buku Tamata  
Kwanale. Eleki tamata matalaru esi supu hukumane  
lulu saisa rebe esi onoe, rebe lekie  
me bukuaru.



Tamata rebe esi nane kena buku tamata kwanale  
more poiesi kena auwe saelae meite mere. Mere pela  
eleki Matale kai Nusa tamata matale sae moneka le  
pusue tamata rebe esi kusu nusa beluke more esi  
supu poie kena auwe saelae meite  
peneka. Auwe saelae meite mere  
esi kotiele mata rebai luare.



Alla Eni Rore kai Domba Anaije Eni bina rebe iono  
kena kaije esi koti be, "Mai!" Sire rebe ilene, suke  
ibeteke lekwe be, "Mai!" Kai sire rebe kmalakeni,  
lomei! Kai sire isuka, irana kwele rebe eono tamata  
ikwana eti pelare, kwele mere seli mo.



Yohanese 3:16

Alla Ioki tamata mei nusa meije  
titinai eti Iriluke Au, Eni Nanae  
esane lomei nusa meije leke sire  
pine ihlaleke loko Aure isupu  
rue kai Alla eti pela.



Roma 3:23 - Le pusue tamatare ite ono dosa peneka kai ite lau bei Alla Eni nkenale kai Eni misete.

Roma 6:23 - Le ono dosare ekeri kena matale kai rue lau bei Alla. Po tamata rebe esi esa kai iteki Tuhane Kristuse Yesuse pende, esi supu rue kai Alla eti pela.

Ibrani 9:27 - Saka Alla Ibeteke be tamatare imata rebai esa neka eleki namake pine Alla Iteu pakala etei.

Epsuse 2:8,9 - Alla lalaIje mise ete imi, hoko Iono imi hlamate le imi hlaleke loko Yesuse. Imi supu hlamate mere bei imi atula lokole mo, po mere misete rebe Alla Iirilukele, kai mere hasile bei imi makerike mo. Hoko sae kwakwaeni be isupu hlamate bei ruai yake.



Roma 10:9,10 - Le sepo imi naku be, "Yesuse mere Tuhane," kai lalemi hlaleke be Alla Iono Ikwana suike, hoko imi supu hlamate bei hukume le imi dosaru.

Le tamata ihlaleke me lalei, hoko inkena me Alla oaI. Kai tamata inaku kena birui hoko isupu hlamate.

Yohanese 3:16,17 - Alla Ioki tamata mei nusa meije titinai eti Iriluke Au, Eni Nanae esane lomei nusa meije leke sire pine ihlaleke loko Aure isupu rue kai Alla eti pela.

Le Alla Iulake Au luake lomei nusa meije kena Au hukume tamata mei nusa meije mo po kena hlamate tamata mei nusa meije.



1 Yohanese - 5:11-13 Alla Eni lepate ete itere elere: Alla Iono ite supu rue mise eti pela peneka, kai supu rue mise eti pelare bei hlaleke loko Eni Nanare.

Tamata rebe iesa kai Alla Eni Nanare, namake isupu rue kai Alla eti pela. Tamata rebe iesa kai Alla Eni Nanare mo, namake isupu rue kai Alla mo eti pela.

Au leki sulate meije ete imi rebe hlaleke loko Alla Eni Nanare leke imi rekwa titinai be imi supu rue kai Alla eti pela peneka.



Yohanese 14; 2 Korintuse 5;  
Tatike pine Uonore. 4, 21, 22

Storyline by: Edward D. Hughes

Illustrated by: Lazarus  
and Alastair Paterson

Adapted by: Sarah S.

Alune Bible (alp) © 2012, Wycliffe Bible Translators,  
Inc. All rights reserved.

<https://live.bible.is/bible/ALPWBT/MAT/1>

©2024 Bible for Children, Inc.

[www.M1914.org](http://www.M1914.org)

[www.bibleforchildren.org](http://www.bibleforchildren.org)

