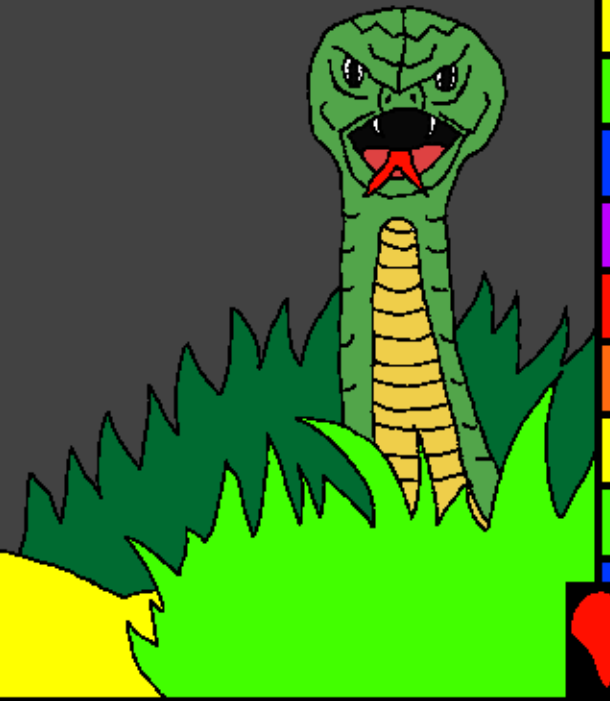


Buku pir Awiya
giramiya

The can pa danu



M'ugorire ku: Edward Hughes

M'unyutire ku: Byron Unger; Lazarus
Alastair Paterson

M'uyikire ku: M. Maillot; Tammy S.

M'ulokire ku: www.christian-translation.com

M'ukyewire ku: Bible for Children
www.M1914.org

©2021 Bible for Children, Inc.

Karatasi: Wu tiye tu twero mi wodo kpawa meni
i wi karatasi kan e tiye pi lwor ungo.



Mungu ucwiyo piny cek.
Kinde ma ecwiyo ng'ati ma
nyi co mi kwong'o ma ecaku
nyinge Adamu, eketho Adamu
gi daku pare Eva
i podo Edeni.



Gi bino i kwo mi mutoro
man gi bino woro Mungu
ni tundo ceng' moko.



Twol upenjo
Eva, Mungu
ukwero iwu ni
camu nying' ceke? Eva
uculo ku maye: "Wa
copo camu nying' ceke
ento acel mi kind
gi wa copo ungo."



“Kan wa mulo
kum yen ne kuno
ke ka wa camu
nyinge wabi tho”.
Twol udwoko ire
nya “wubi thon go”.



"Wubi doko calu Mungu." Eva ugam ubedo kud ava nying' yen ma Mungu ukwero. I winjo vupo pa twol man ecamu nying' yen ne.



I ng'eye ma Eva uworo ngo
lembe ma Mungu uyero, e
wondo Adamu dhe pi timo
calu en. Nwang'u Adamu
uyer ire nya:
"Akwero!
Acopo ngo ni
cayu ngo
Mungu."





Kinde ma
Adamu gi ku Eva ni dubo,
gi poy nya gin ceke gi tiye munero.
Gi yiko ith lum pi jiyo muneru migi
man gi pondo i lum pi Iworo Mungu.



I koyo mir utiyeno, Mungu ucido I podo Edeni. Eng'eyo lembe ma Adamu gi ku Eva gi timo. Adamu udotho Eva, Eva udotho Atwol. Mungu uyero igi: "Twol utiye kud alam". Daku bi gonyire ku remo.




"Calu ve ma ini Adamu i dubo,
ng'om zoo utiye kud alam pi
dubo peri. Man ibi camu ku
kwok mi wii."



Mungu uryemo Adamu gi
ku eva kud i podo Edeni
man gi pokiri ku Mungu
pi dubo migi.



A colorful illustration depicting a scene from the Bible. In the background, a white fence runs across the frame. To the left, a white, featureless figure stands with its arms outstretched, holding a large, brown, leafy branch. Behind the fence, there are stylized trees in red, yellow, and green, and a bright yellow sun. In the foreground, a man with a beard and curly hair (Adam) and a woman with long brown hair (Eve) are shown. They are both wearing simple, grey, textured robes. Adam is holding Eve's hand, and they both have a somber or thoughtful expression. The ground is a dark grey color. The overall style is simple and illustrative, with bold outlines and a limited color palette.

Mungu uyiko
pala ma umil amila ketho
kud gi dwogi kendo i podo
Edeni. Mungu uyiko kendi
mir adila ni Adamu gi
ku Eva man e ronyo gi
kudo. Mungu uwang'u
adila ne kani ?



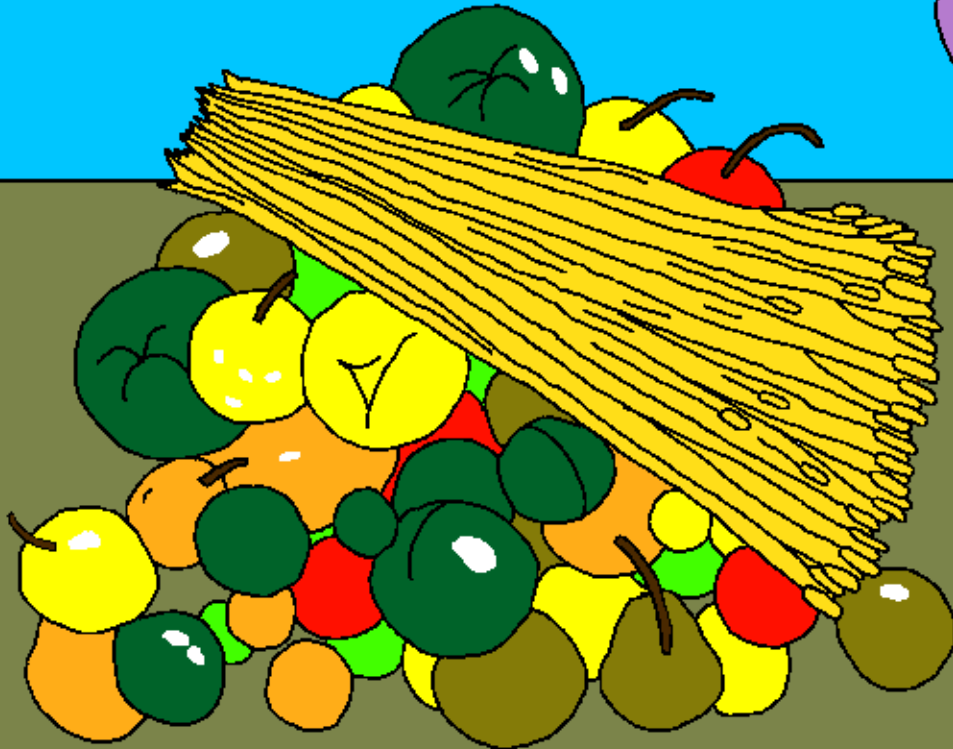
I ng'eyi nindo, Adamu gi ku Eva gi giyero wath. Nyatin migi mi kwong'o ma nyinge Cain ubino ja fur kwer. Nyatin migi mir aryo m nyinge utiye Abel ubino ukwai ley.



Ceng' moko Cain utyero ni Mungu dek macol. Abel utyero nyati rombo ma leng' calu tyer ni Mungu.



Kinde ma Mungu ujolo ngo
tyer pa Cain, egame bedo
ku ng'eyi cwing'. Kan i
timo lembe ma ber, ng'a
ma copo ni kweri?



Ng'ey cwiny pa Cain uthum
ungo. I ng'ey saa, e cido I
podo kama Abel ubino
timo tic man enege.



Mungu upenjo Cain: "Umeru ma Abel ni kani?" Cain udwoko nya eng'eyo ngo. Epenjo Mungu "An a tiye ja gwok umira?" Mungu umayu ire copo mi furo fur man edwoke nia ng'atu ma wotho swa.



Cain upokire ku Mungu. E nyomo nyati pa Adamu gi Ku Eva man gi caku the wath. I nindo ma ceng'ini, nyi kwayu ku nyi kwayu ma bor upong'o pacu ma ecaku.



Saa ma eca wath pa Adamu gi ku Eva umedire. Con eca danu bedu kwo oro ma lee akeca ni gadu ma tin.



Kinde ma nyati pare ma Seth unyolire, Eva uyeru: "Mungu umiyo ira Seth pi ni wilo Abel." Seth ubino ng'atu ma kwo pare cuu, ekwo oro ç&é man enwang'u awiya lee.



I ng'om zo danu udoko ju ng'ey
cwiny nit undo tek ma pol
ukadu. Mungu ugamu nwang'u
nya etiye cuu ni nyoto
ngom ne man ...



... Ley ku winyo zo. Mungu
bedo ku can pi lembe
ewciyo danu. Ento ng'ati
acel ugamu nyayu foyo i
Mungu...



Ng'ati ne ubino Noé. Noé utiye
nyakway Seth man ke kuro pare
ubino cuu akeca. Ebino lube
lembe pa Mungu.



Eponjo awiya pare addek ku woro Mungu. Ka woni Mungu upangu ni tiyo ku Noé i ayi m'ukoc.



The can pa danu

Kpawa mi lembe pa Mungu, Bibilia

unwang'ire i

Tangambere 3 - 6

"Lembe apoka mi wec mu miyo lero."
Zaburi 119:130



Thum



Kpawa mani Lemb'agora ube weco iwa iwi
Mungu muwa ma ber m'ucwiyo wa man
m'umitho wang'eye.

Mungu ung'eyo nya wa timo lembe ma rac
ma elwong'o dubo. Cul mi dubo utye tho,
ento Mungu umaru wa akeca ma e oro
wodhe m'acel, Yezu Kristu , m'utho i wi
musalaba pi dubo muwa. I ng'eye Yezu ucer
i wang' ni dok i plo. Kan wuyiyo Yezu man
wu kwayu kisa pi dubo ma utimo, ebi time
iwu. Ebi bino kwo i i kawoni, man wubi kwo
wu kudhe naka kun aka.



Kan uyiyo nya lembe ma eni utye lembe
manda, wuyer ku maye:

Rwoth Yezu, Ayiyo nya in i Mungu, man i
doko danu pi tho pi dubo muwa, man ka woni
i dwogo kendo. Tim kisa, dwogi i kwo para
man i wek dubo para ketho abe ku kwo
manyen kawoni, man ceng' moko abe kudi
naka ku naka. Konya ku ni wori man ni kwo
piri calu nyatin peri. Amen

Som Lemb'agora man weci ni Mungu nindo
ceke! Yohana 3:16

