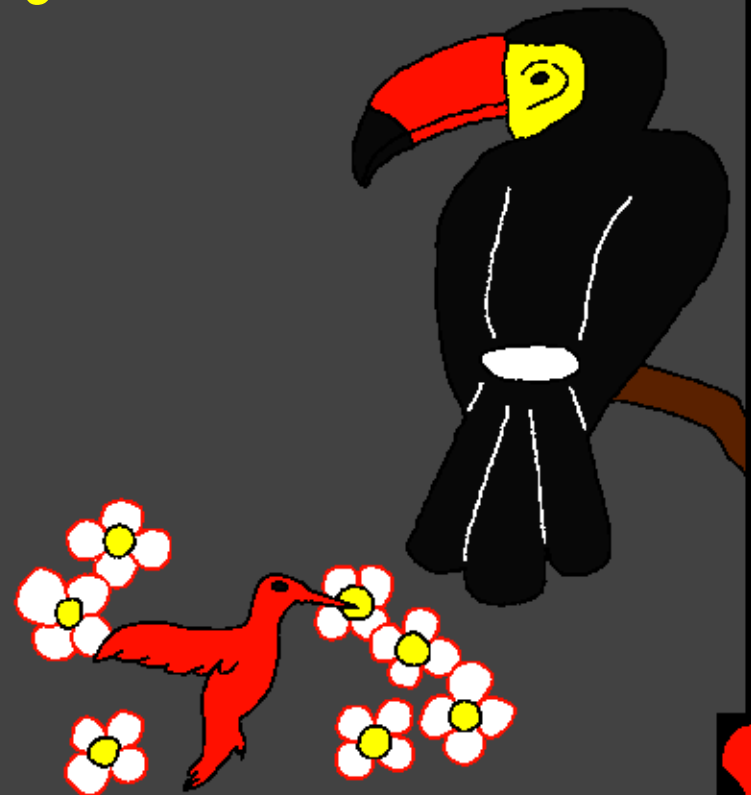


Demisenninw ka Bibulu Jira

Tuma min Ala ye
fen be dàn



A sebenna maa min fe: Edward Hughes

**Jakera min fe: Byron Unger; Lazarus
Alastair Paterson**

A kenena n'a ye min fe: Bob Davies; Tammy S.

Kanbayelemara min fe: christian-translation.com

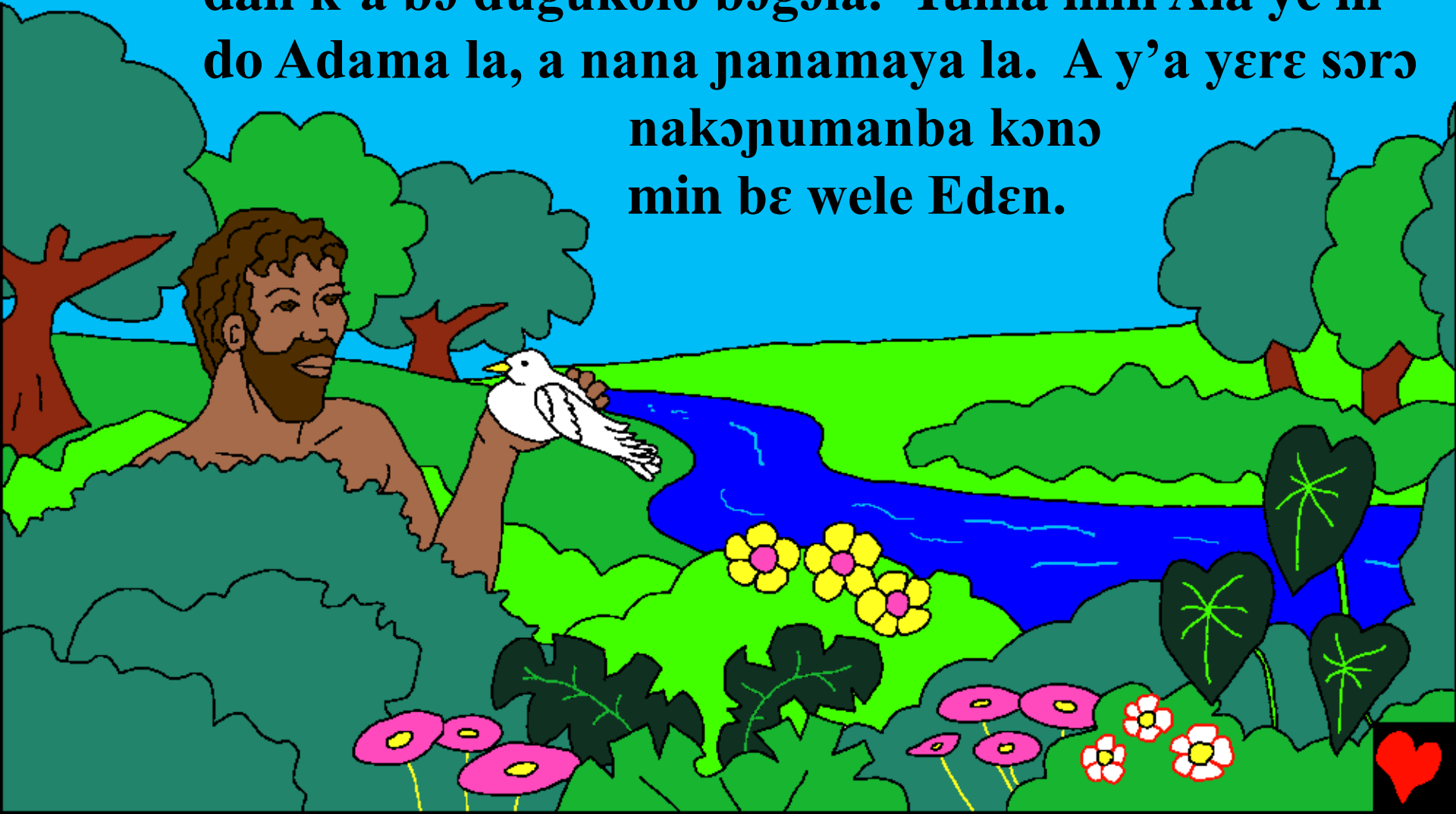
**Bora min fe: Bible for Children
www.M1914.org**

©2020 Bible for Children, Inc.

**Yamariyaseben: I yamariyalen do ka nin baro ladege walima ka seben,
tuma o tuma n'i t'a jago.**



Jɔn y'anw dɔ̀n? Bibulu, Ala ka kuma, b'a adamadenya damine cogo ɲɛɔ. Waati jan ka kɔ̀n bii ɲɛ, Ala ye maa fɔ̀ɔfɔ̀ɔ dɔ̀n min tun bɛ wele k'o Adama. Ala ye Adama dɔ̀n k'a bɔ dugukolo bɔ̀gɔla. Tuma min Ala ye ni do Adama la, a nana ɲanamaya la. A y'a yere sɔ̀rɔ nakɔ̀ɲumanba kɔ̀nɔ min bɛ wele Eden.

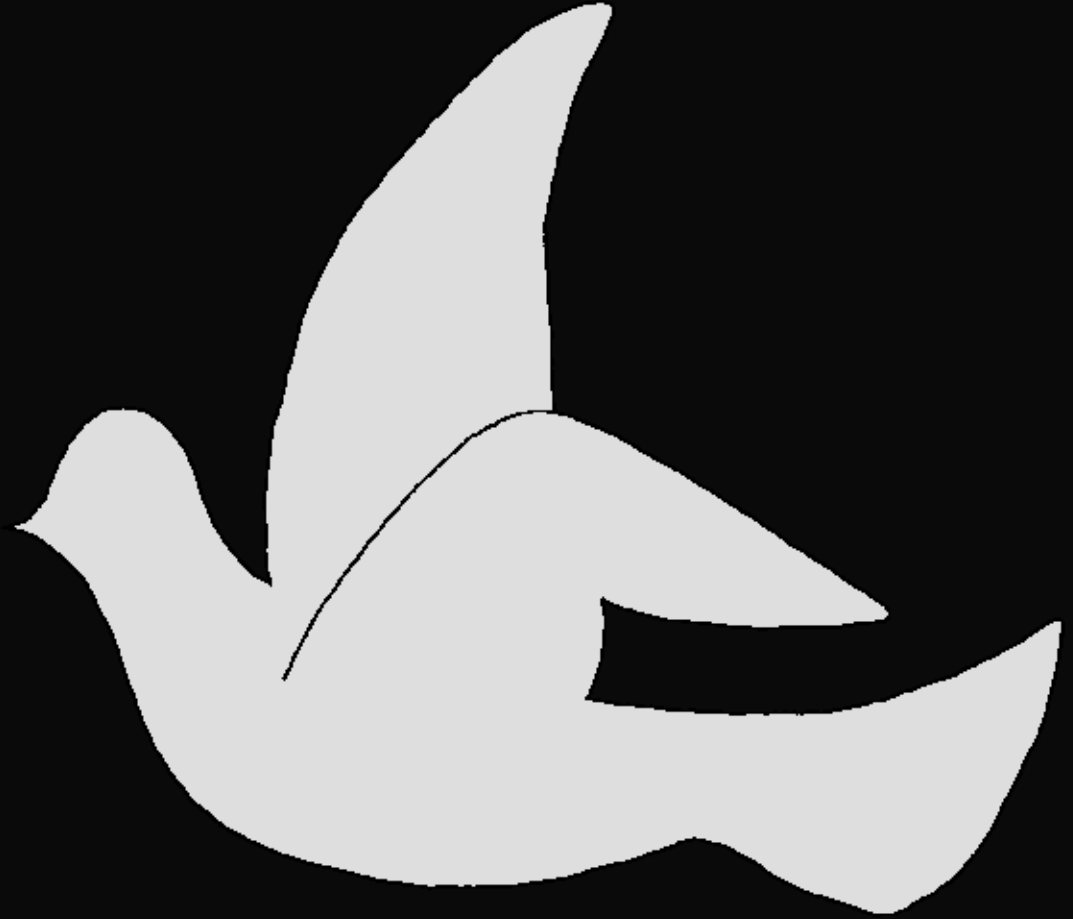


**Sani Ala ka Adama dàn, A ye duniya cɛpumanba dàn
k'a fa ni fen cɛpumanbaw ye. Doni doni A ye kuluw ni
tukɔnɔnaw dàn, fleru kasadumanbaw ani yirijubaw,
kɔnɔw ni didenw dàncogo cɛpumanbaw, jɛgɛ
kurukaserilaw ani kɔtɛ namamanw.**

**Tipe na, Ala ye fen in bɛ
dàn - fenbɛ.**



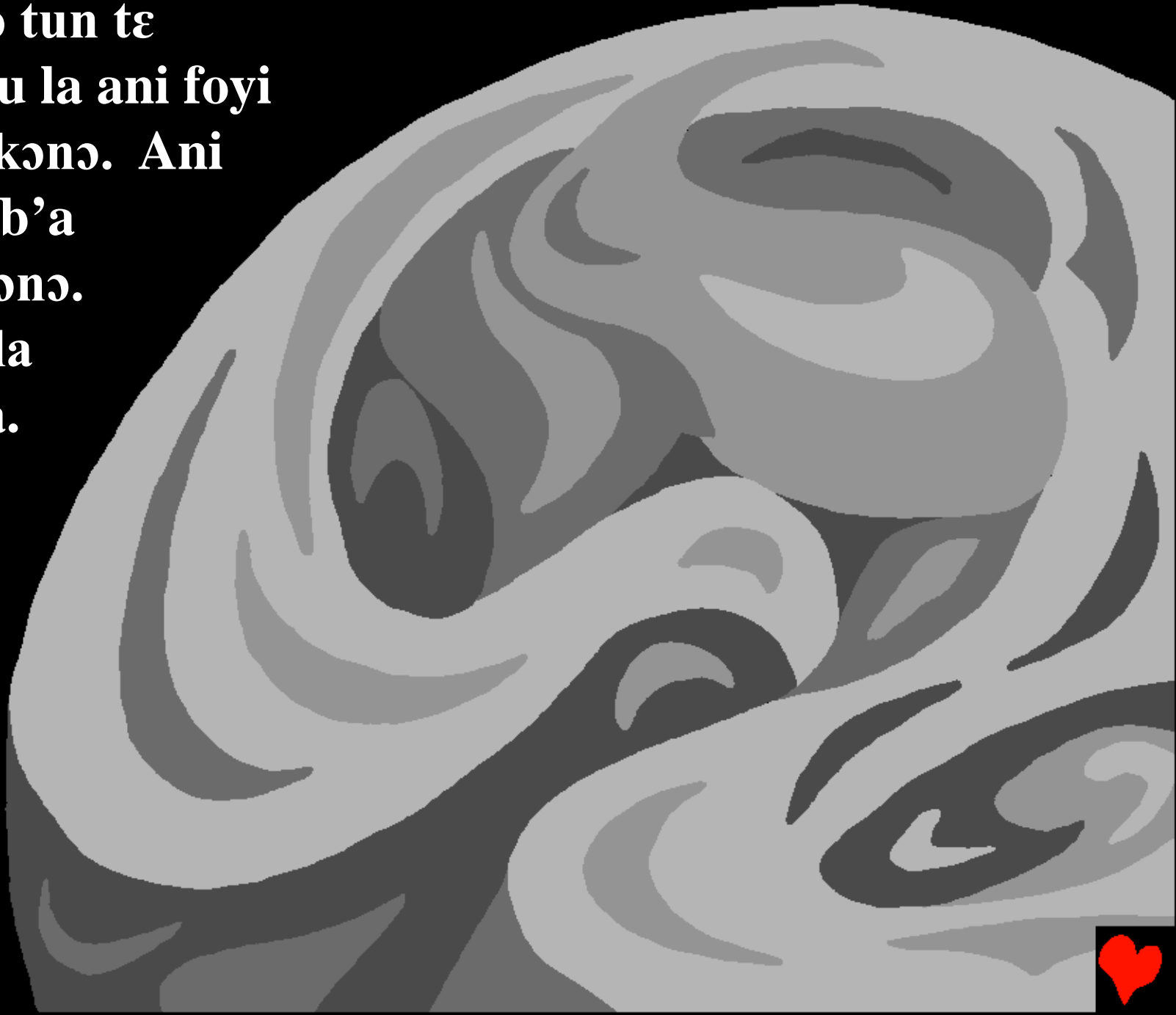
**A damine, ka kon Ala
ka d'anniye, foyi tun
te ye fo Ala. Maasi,
yoro si, fenfosi tun te
ye. Yelen ani dibi si
tun te ye. Sankolo ani
dugukolo si tun te ye.
Kunu ni siini tun te
ye. Ala kelen de tun
be ye min nin damine
t'a la. O tumanasa,
Ala ye ko ke.**



**A daminela, Ala ye Arijina
ni dugukulu d`an.**



Ani cogo tun te
dugukulu la ani foyi
tun te a kɔnɔ. Ani
dibi tun b'a
dunya kɔnɔ.
Ala sɔrɔla
ka kuma.
“Yelen
ke ye.”



**O la yelen kera ye. Ala ye yelen wele ko don ani k'a dibi
wele ko Su. Sufela ni sɔgɔma kera tile fɔlɔ ye.**



Tile filana na, Ala nanani bajiw, kɔkɔjiw ni baninjiw ye arjina kɔrɔ. Tile sabana, Ala ko ko, “Dugukolo jalan k’i jira.” O kɛra.



**Ala tilara ka binw ni fleruw ni jirininw ni jirijubaw
ci k'u ka bo. U ka soroka bo. Sufela
ni sogoma tun be ye
Tile sabanan.**



**O kofe Ala ye tile, ni kalo,
ani dolow minw maa si t'u
dadon. Sufela ni sɔgɔma
tun be ye Tile naninan.**



Jikɔndanfɛnw ni jɛgɛw
ani kɔnɔw de tun bɛ tugu
ola Ala ka sɛbɛnna tɔgɔw
la. Tile durunan A ye
jɛgɛbaw ni tinɛninw,
kɔnɔsogonin ni kɔnɔnin
nisondiman kasililaw.
Ala ye jɛgɛsuguya bɛ kɛ
ka dugukolo kanjiw fa
ani kɔnɔ suguyabɛ yasa
dugukolo, baji ani
sankolo diya. Sufɛla ni
sɔgɔma tun be ye Tile
duranan.



O kɔfɛ, Ala seginna ka kuma. A ko ko,
“dugukolo nani danfen naninanw ye ...” Ni dona
datanfen ni fenpanamanin ani fofodisikanfen suguyaw
be la. Samaw tun be ye minw be dugukolo la yereyerɛ
ani Amerikijamana datanfen do n’a si ka ca kɔsɔbɛ.
Warablen tulogɛlenw ni bamabaw. Dugunogow ni
nkɛlenw. Kungoɔaamɛw ni jakumaw. Ala ye fen sugu
be dan o do de.

Sufɛla ni sɔgɔma tun be ye tile wɔrɔnan.



Ala ye fen were ke tile woronan do - fen kerekennenba do. Fenbe labennen tun do siisan Maanifing kama. Balow tun be forow la ani datanfenu yasa ka adamaden makore. Ani Ala ko, “An kan adamaden k’an ladege ye.

A y’a to a ka ke danfen be sanfe dugukolokan.” O DELA ALA SOROLA KA ADAMADEN DILAN KA KE YERE JAA YE; A YE A DILAN ALA JA LA.



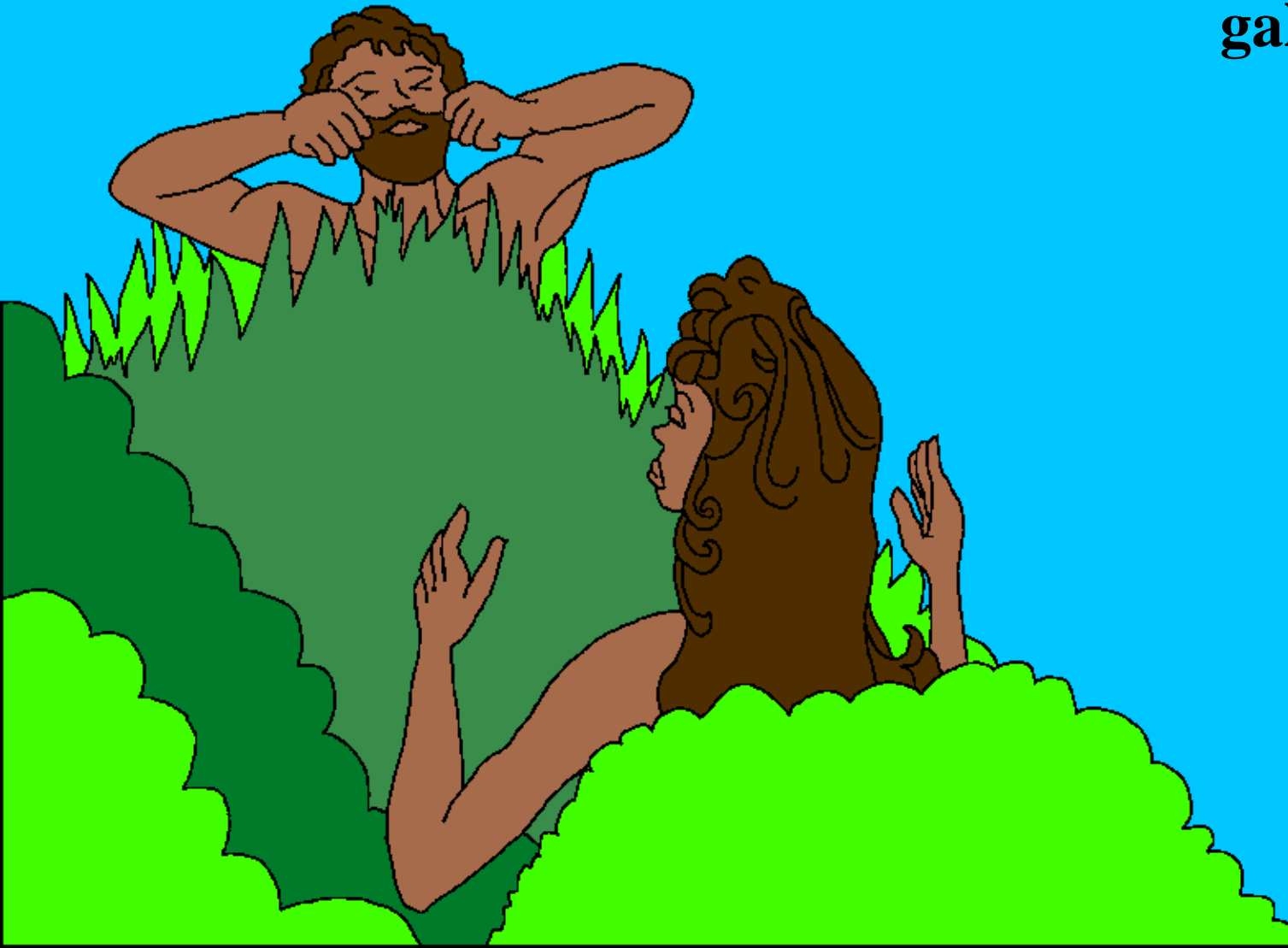
**Ala kumana Adama
ƴε. “ƴεn o ƴεn y’i
diya nakɔ in kɔnɔ a
dun. Da i kana
dɔnniyapuman ni
juguman jiiɗiden
dun. N’iye jiiɗiden
dunmu i bena saa
sika t’a la.”**



Ola Matigi Ala ko ko, “Kelenya mapi adamaden ma. N bena demelila do dan a ye.” Ala ye kɔnɔw ani kungokɔnɔ fɛnjuguw bɛ bila ka taa adama yɔrɔ. Adama y’u bɛ tɔgɔda. O kɛli y’a jira k’a tun ye ma kegunman ba ye. Na kɔnɔw ni kungokɔnɔ fɛnjuguw bɛ cɛla fɛn wɛrɛ si tun tɛ ye min bese ka kɛ adama jɛrɔrɔn hakika ye.



**Ala ye sunṅṅo giriman ba bila Adama la. Cε
sinṅṅobato galagakolo fan kelen bolen, Ala ye Muso
dilan ka bɔ Adama
galagakolo la.**



**Ala ye fɛnbɛ dan tile wɔrɔkɔnɔ.
O kɔfɛ Ala ye tile wolonwulana
barika k'a kɛ fɛn tɔw dan do ye.**



Tuma min Ala ye fɛn bɛ dɛn

Baro min bɔra Ala ka kuma na, Bibulu kɔnɔ,

sɔrɔla

Dancogo 1-2

“I ka kuma daminɛ be yelen dii.”

Donkili 119:130



A banna



Nin Bibulu nsiirin be an ka Ala pummanba
de fɔ an ye min y'an dan ani min b'a fɛ an K'Ale don.

Ala b'a don k'an ye ko kolɔn kɛ min n' A b'a wele ko jurumi.
Jurumi kiti ye saaya de ye, Da Ala b'an fɛ kɔsɔbɛ A ye A
dencɛkelen pewu ci anw ma, Yesu, ka kasaa kura kan ani ka
kiribɔ anw jurumiw kɔsɔn. Yesu ka sɔrɔ ka segin ka ni na ka tila
ka so arijinɛ kɔnɔ! Ni e be daa Yesu la k'i ka jurumiw yafadeli
a fɛ, A bena o ma! A bena na panamaya I dusukunna siisan,
o la panamaya kɛ n'Ale ye kudayi.

I e daarala ko nin tiɲɛ de ye, nin fɔ Ala ye:
Kanulen Yesu, ne daarila ke ye Ala de ye, min kɛra cɛ dɔ ye ka saa
ne ka jurumi kɔsɔ, ola siisan E balo tugun. Ne b'I deli ka dɔ ne ka
panamaya la ani ka yaafa ne ka jurumiw ma, yasa ne na seka
panamaya kura sɔrɔ siisan, tila ka taa do dɔ ka to ni E ye kudayi.
N demɛ n ka I bato ani ka balo I ye ikomi I den. Amina

Bibulu kalan ka kuma ni Ala ye dogo do! John 3:16

