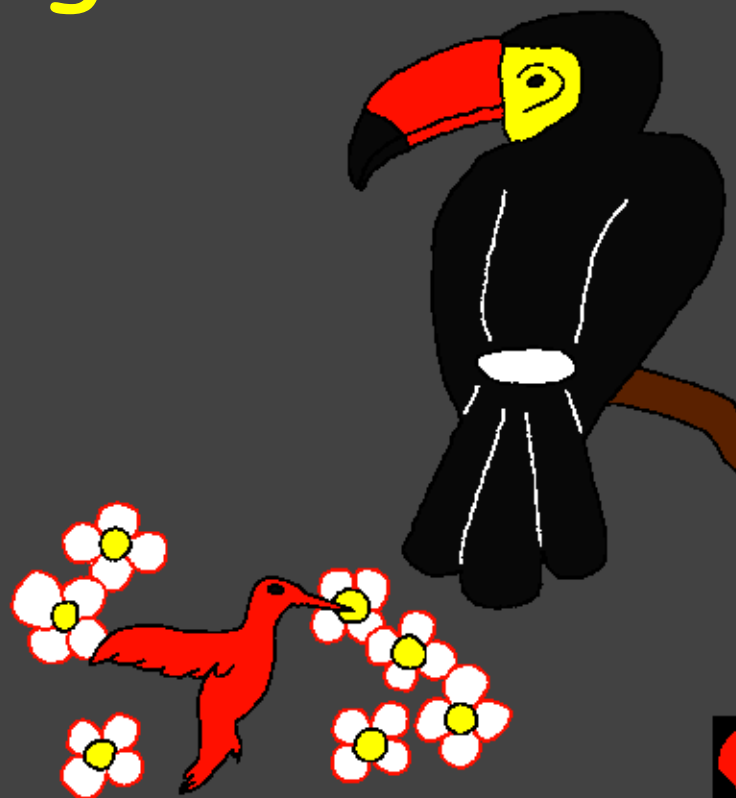
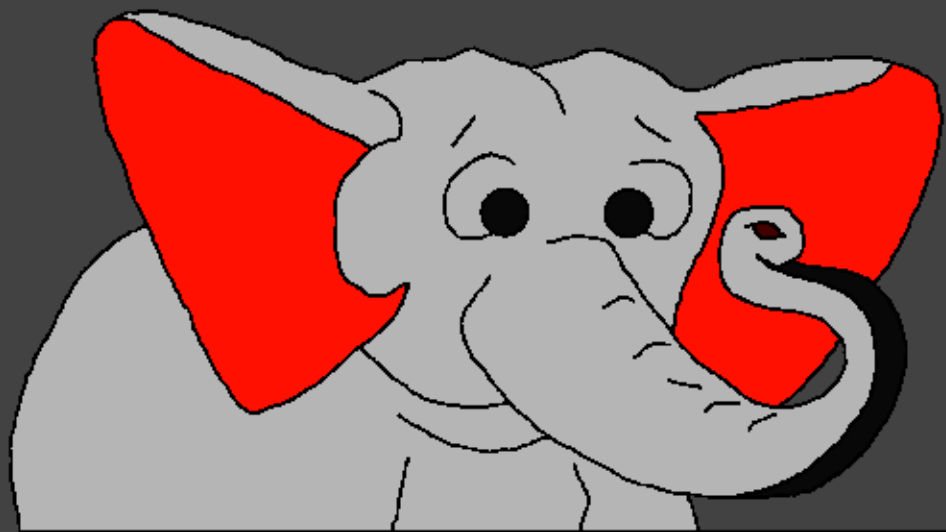


Icipingo icabana
Camiletela

Lintu Lesa Apangile
Fyonse



Calilembwa na: Edward Hughes

Uwalangilishe: Byron Unger; Lazarus
Alastair Paterson

Yasendwa na: Bob Davies; Tammy S.

Abapilibwile: Phiri Williams

Icapangwa na: Bible for Children
www.M1914.org

©2020 Bible for Children, Inc.

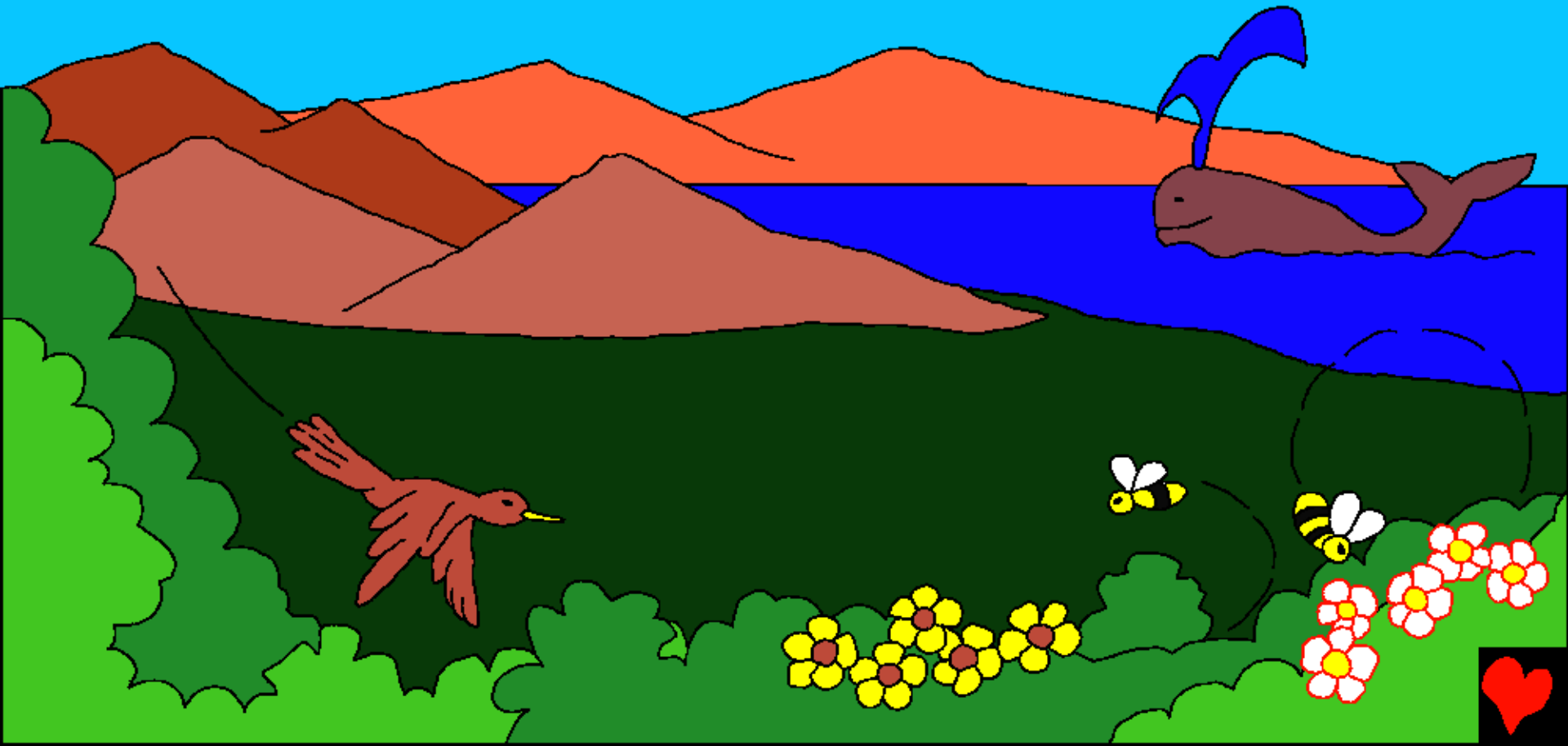
Kupoke nsambu: Mwalikwata nsambu uku senda no ku printa ilyashi ili,
cikulu mwikashitisha.



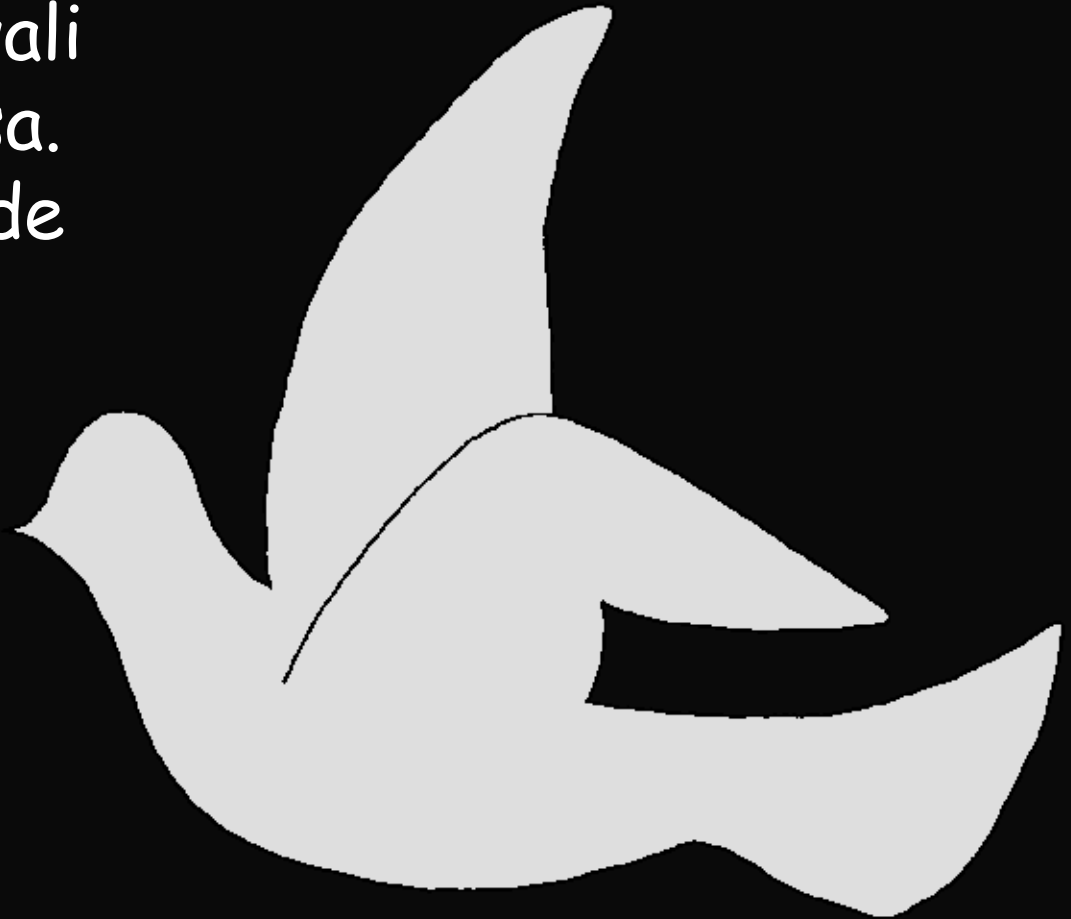
Ninani watupangile? Icipingo, ishiwi lya kwa Lesa, ilanda ifyo abantu batendeke. Akale Lesa apangile umuntu wakubalilapo no kumwinika ishina lya kuti Adam. Lesa abumbile Adam ukufuma kwi loba. Lintu Lesa aputilemo umweo muli Adam alisaba umumi. Aisangile mwibala iliyaleitwa Eden.



Apo talapanga Adam, Lesa apangile icalo no kubikamo ifintu ifisuma nganshi. Panono panono Lesa abumbile impili, ne bemba, amaluba ne miti. Ifyuni ne nshimu, Ifisabi ifikulu, ne fikono. Mucishinka, Lesa apangile fyonse ifyabako- fyonse fye.



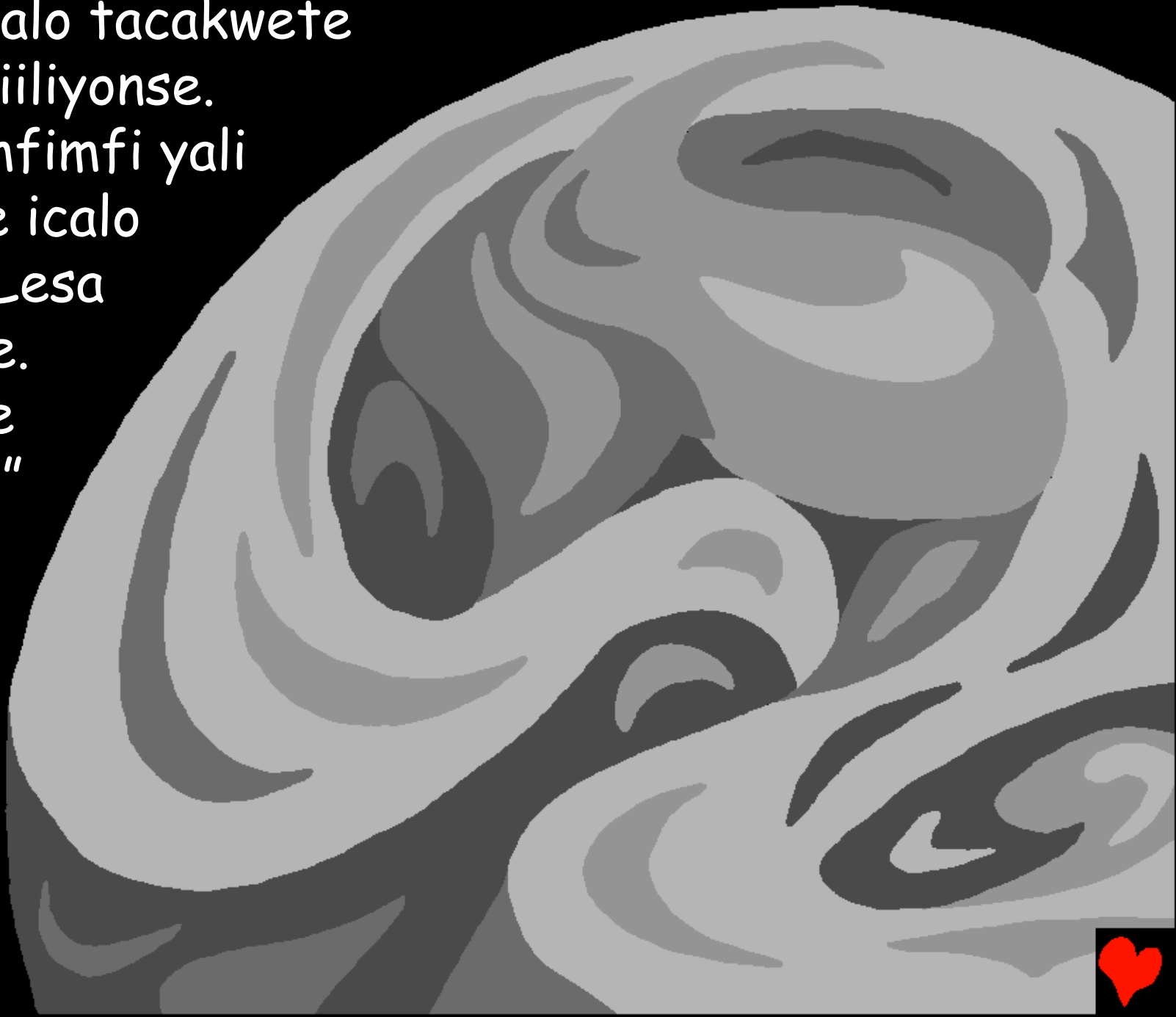
Mukutendeka elyo Lesa talati
apange iciliconse takwali
kantu ukupatulako Lesa.
Takwali abantu, incende
nangula ifintu fimbi.
Takwali ulubuto
nangula imfimfi,
takwali pamulu
nangula panshi.
Takwali mailo nangula
ilelo kwalifye Lesa
ekafye uushakwata
ntendekelo. Lesa
acitilepo fimo!



Pakutendeka,
Lesa abumbile
imyulu ne sonde.



Kabili icalo tacakwete
imibele iiliyonse.
Kabili imfimfi yali
tebelele icalo
conse. Lesa
alisosele.
"Nakube
ulubuto."



Kabili kwalisaba ulubuto. Lesa ainike ulubuto ukutla akasuba elyo imfimi atile ubushiku. Elyo kwalisaba icungulo no lucelo ubushiku bwakutendeka.



Pa bushiku bwacibili, Lesa abikile amenshi muli bamba. Pa bushiku bwacitatu, Lesa atile, "Nakumoneke umushili uwauma." Kabili calicitike.



Kabili Lesa aebele ukutla icani, amaluba ne miti
fimoneke. Kabili fyalimoneke. Elyo
kwaba icungulo nolucelo
ukulenga inshiku
ya citatu.



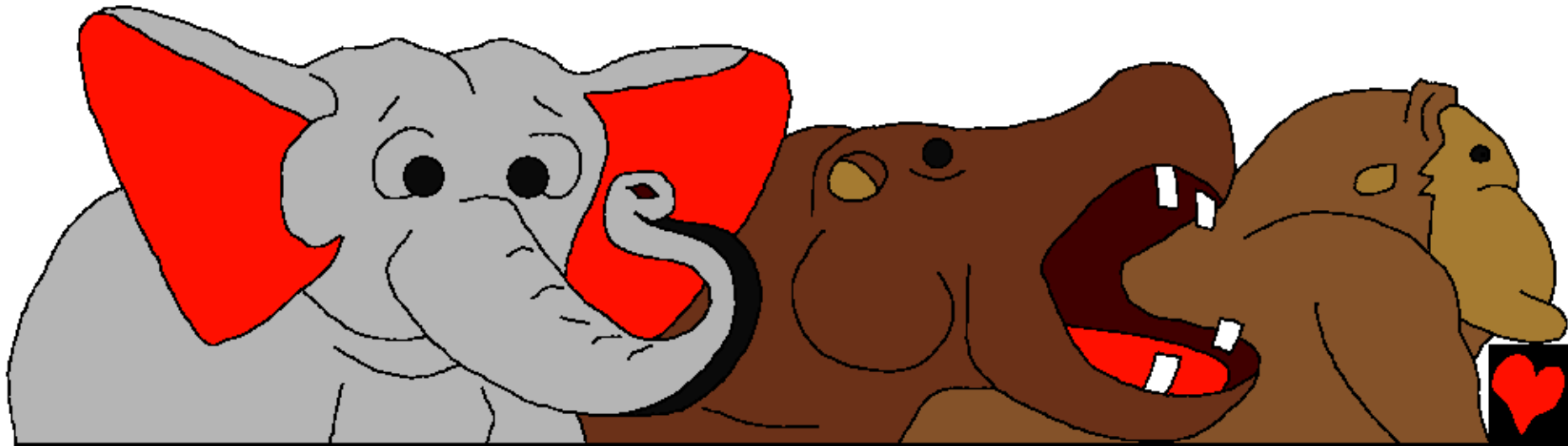
Elyo nomba Lesa apangile
akasuba, umweshi ne ntanda
ishingi ishakuti takwaba
uungapenda. Elyo kwaba
icungulo nolucelo ukulenga
inshiku shine.



Ifilengwa na Lesa ifya
mumenshi, amasabi, ifyuni
efya konkelepo pa butantiko
bwa kwa Lesa. Pabushiku
bwalenga shisano apangile
amasabi ayakalamba
notunono, ifyuni ifikalamba
notunono. Lesa apangile
amasabi ayapusana-pusana no
kuyabika mu menshi ukutula
fileyangala mumenshi na
mulwelele ye sonde lyonse.
Elyo kwaba icungulo no lucelo
ubushiku bwalenga shisano.



Ukufuma apo, Lesa alisosele nakabili. Atile, "Isonde nalipele ifilengwa ifyumi..." Inama ishapusana pusana shonse, utushishi na fimbi fyalimoneke. Ekwali insofu ishikulu na imoo. Ba kolwe, ing'wena ne imyambo nefyongoli. Inama ishapusana-pusana shonse ashipangile pali ubu bushiku Lesa.



Kabili icungulo no lucelo ukulenga
inshiku shisanu na bumo.



Lesa alicitile icintu cimbi pa bushiku kwalenga shisano na bumo. Icintu icaibela nganshi. Fyonse fyali ifya pekanishiwa pa muntu. Kwali ifyakulya mumabala, ne nama isha kumubombela.

Elyo Lesa atile, "Natupange umuntu mucipasho cesu. Mukuti alebaka fyonse ifili pesonde." EICO LESA ALI BUMBILE UMUNTU MUCIPASHO CAKWE; MUCIPASHO CAKWALESA ALI MUBUMBILE ENA ...



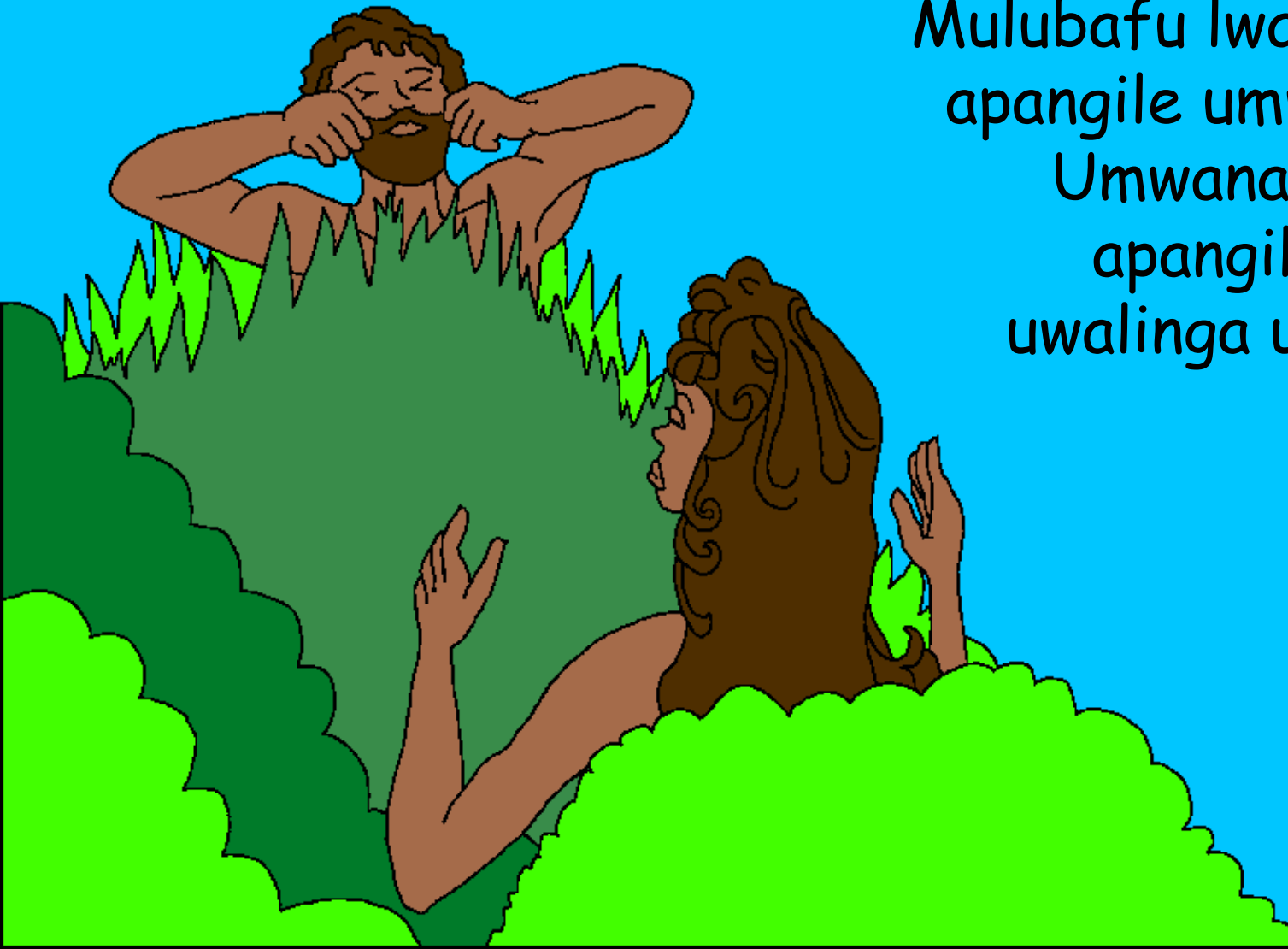
Lesá alilandile na Adam. "Lyeni ifyo mungatemwa mwibala. Lelo tekweshá ukulya kucimuti icilenga ukwishiba icisuma ne cibi. Ubushiku ukalyako ukafwa icine cine."



Kabili Imfumu Lesa atile, "Tecisuma ukuti umuntu
abe eka. Nalapanga uwakumwafwilisha." Lesa
aletele ifyuni fyonse ne nama kuli
Adam. Adam alifipele amashina
fyonse. Afwile ali uwacenjela
pakucita icintu ca musango
uyu. Lelo pa fyuni ne finama
fyonse tapali nelyo cimo
icabanga Adam.



Lesa alilalike Adam utulo. Mu muntu
uulele Lesa alibulamo ulubafu
nokupanga umwanakashi,
Mulubafu lwakwa Adam
apangile umwanakashi.
Umwanakashi Lesa
apangile ewalifye
uwalinga ukwampana
na Adam.



Lesá abumbile fyonse munshiku shisanu na bumo. Elyo Lesá alibupalile ubushiku bwalenga shisano na shibili nokubulenga ubushiku bwa kutusha. Mwibala lya Eden, Adam no mwina mwakwe Eva bali abasansamuka nokumfwila Lesá. Lesá ali ni Mfumu yabo, kapela na cibusa wabo.



Lintu Lesa Apangile Fyonse

Ilyashi ukufumina mu cebo cakwa Lesa,
Icipingo,

isangwa mu

Ukutendeka 1-2

"Pakwingila pa cebo cenu cipela ulubuto."
Amalumbo 119:130



Impela



Ili lyashi Iya mucipingo litweba pali Lesa wesu uwatubumbile kabili afwaya ukutilati mumwishibe.

Lesa alishiba twalicyita ifintu ifibi, eflyo eta ulubembu. Ukupanikwa kwa lubembu ni mfwa, lelo Lesa alitemwa sana alitumine umwana wakwe eka, Yesu, ukufwa palupanda no kupanikwa pa lubembu lwenu. Yesu alibuka nokuya kumwabo Kumulu. Nga kwasubila muli Yesu nokumulomba ukuti amyeelele imembu shenu, alamyeelela! Kabili alaisaikala muli imwe ililine, kabili mukekala nankwe umuyayaya.

Nga kwasubila ukutila ici
ecishinka, soseni amashiwi aya kuli Lesa:

Mwemutemwikwa Yesu, nasubila ukutila nimwe Lesa, lelo kwasangwike umuntu ukutila mumfwile imembu shandi, pali lelo muli abami. Ingileni mumweo wandi nokwelele imembu shandi ukutila mbe no bumi bupya, kabili bushiku bumo nkabe nenu umuyayaya. Ngafweni ukumyumfwila nokwikalila imwe nga mwana wenu. Ameni.

Belengeni Icipingo no kulanda na Lesa cila bushiku! Yohane 3:16

