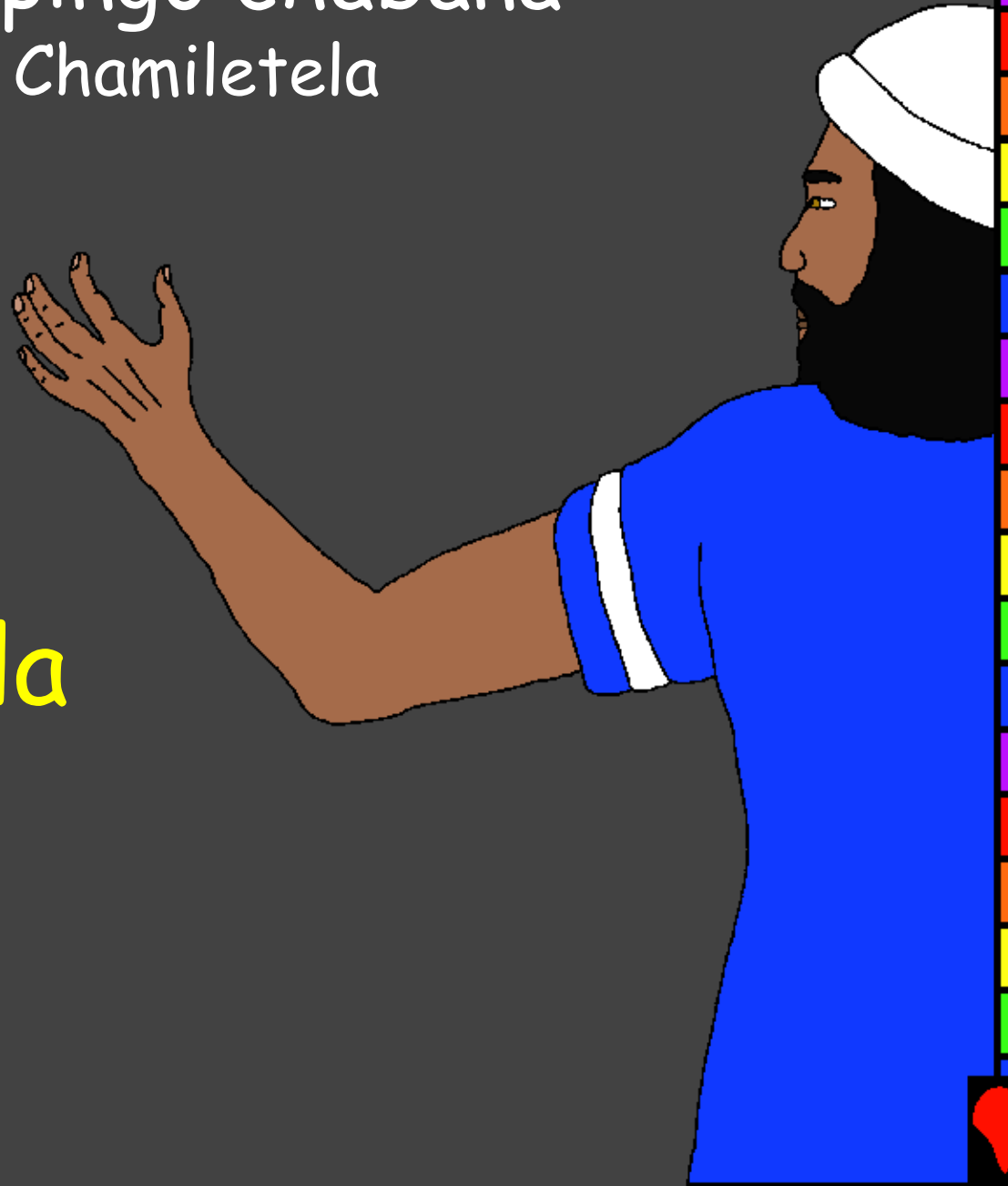


Ichipingo chabana
Chamiletela

Yoshua
Atungulula



Kalemba ni: Edward Hughes

Bakalenga wafikope: Janie Forest
Alastair Paterson

Abalembulwile: Ruth Klassen

Abayalwile mu chibemba:
Bwembya Epidious Mulopa

Icapangwa na: Bible for Children
www.M1914.org

©2025 Bible for Children, Inc.

Kupoke nsambu: Mwalikwata nsambu uku senda no ku printa ilyashi ili,
chikulu mwikashitisha.



Mose nomba nafwa. Yoshua
alishibe ukuti nomba Lesa namusala
ukutungulula abena Israeli. Ilyo
Yoshua talapekanya ifita fyakwe
abalilepo ukipekanya umwine. Lesa
alaile Yoshua ukumupela ukuchimfya
kabili no bukankala muchalo
chabulayo ngachakutila fye
abantu babeli
ichebo chakwe.

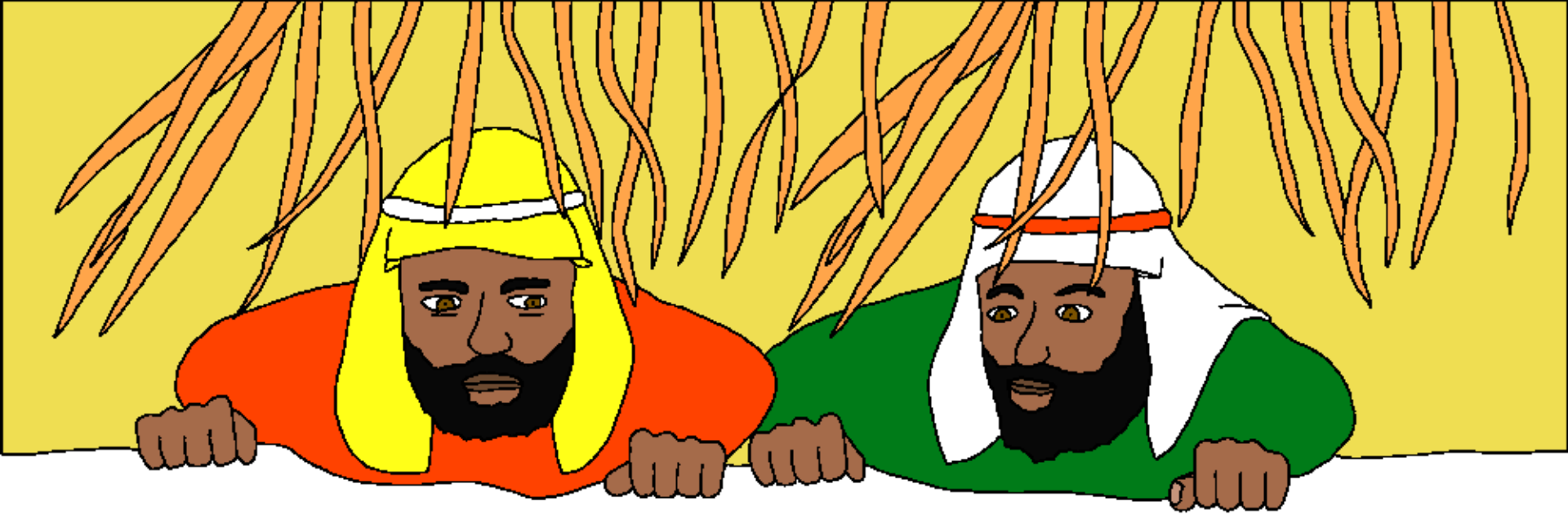


Abena Israeli balaile
ukukonka Yoshua no kubela
ichebo chakwa Lesa lyonse.



Muli bumano,
intungulushi ipya
yatumine inengu
muchalo cha Kenani
ukuya lengula
imichingilile ya
musumba
uukalamba uwa
Yeriko. Inkondo ya
kubalilapo iya bena
Israeli ili
nokubela kulya.





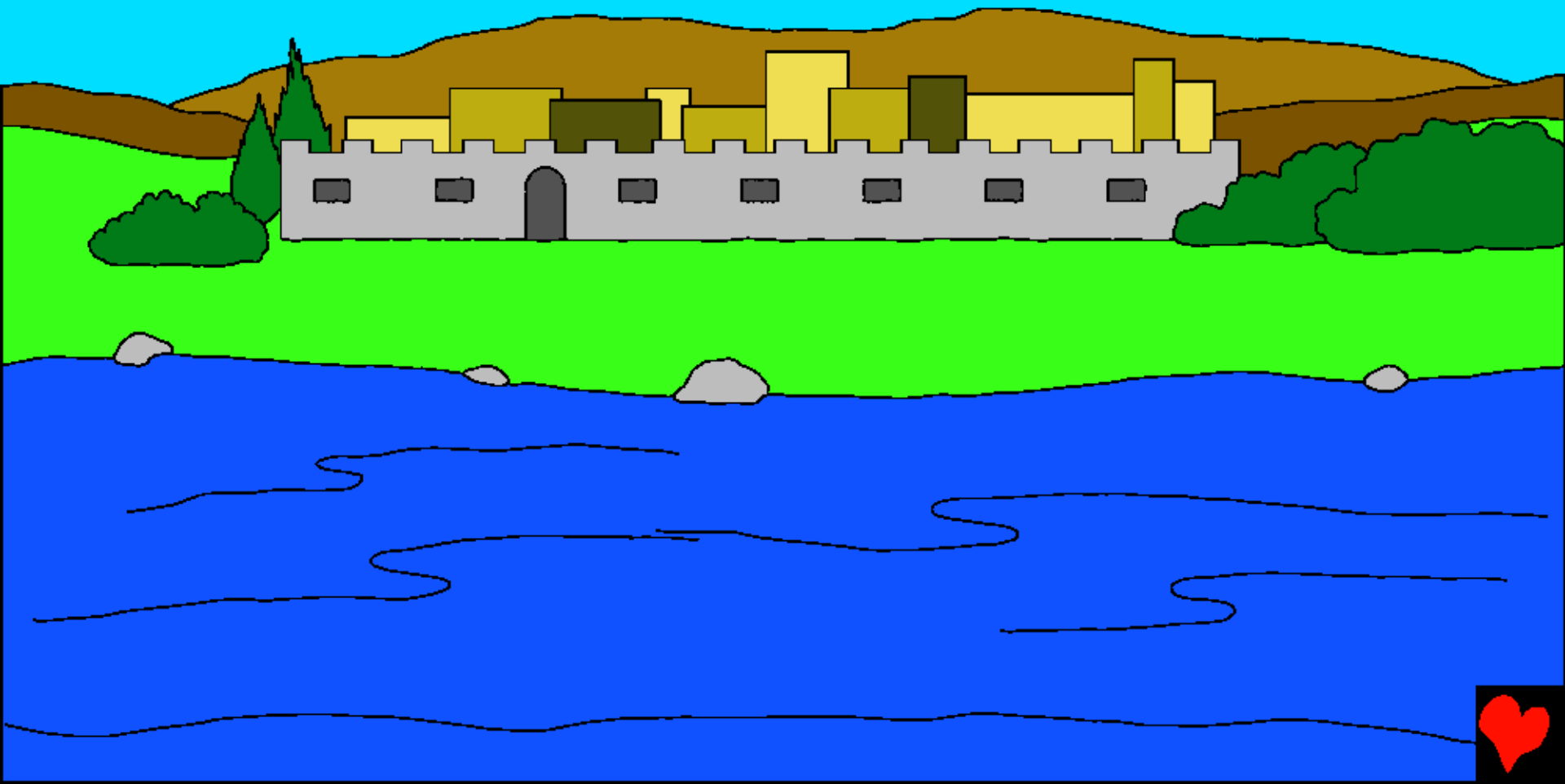
Na umo aebele infumu ya ku Yeriko ukuti mu musumba mwali inengu. Nokufwaya kwatampiile mung'anda yakwa Rahabu, pantu epa leikala abo bashitata. Abashilika bakonkweshe mumaka ku chibi chakwe. Na mukwangufyanya fye, Rahabu afishile inengu mu mutenge.



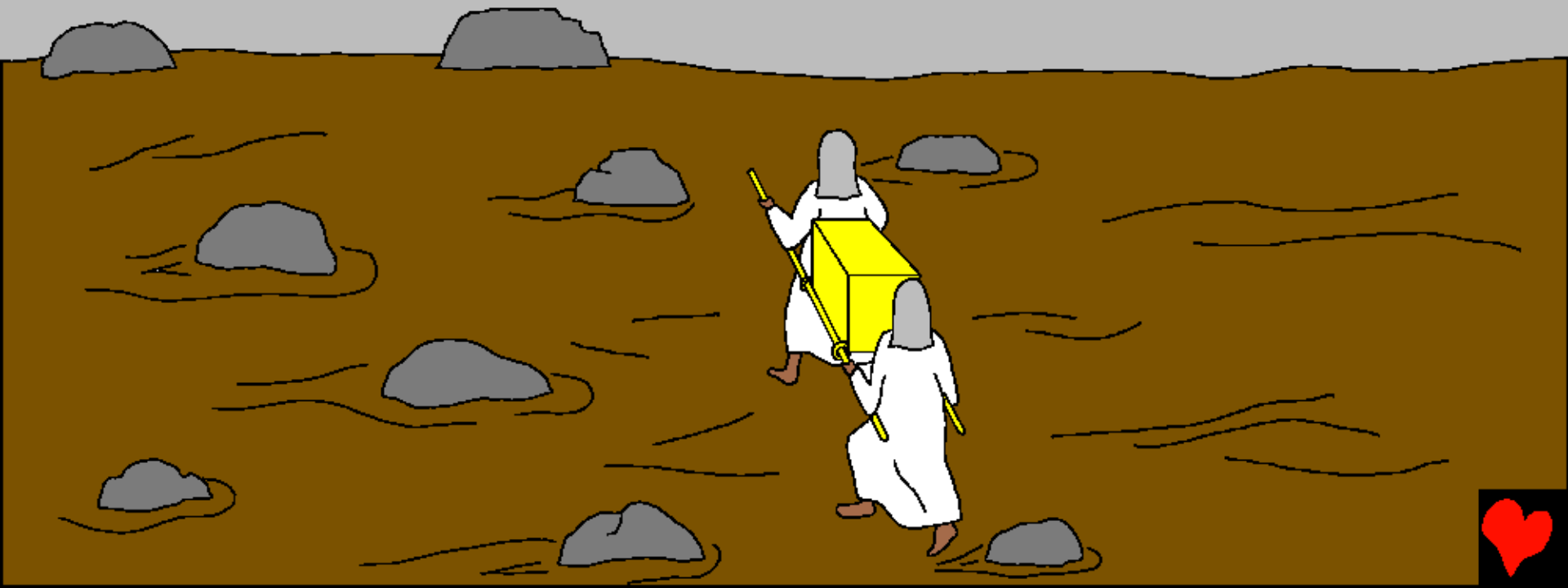
Ilyo ifita fyafuminepo, Rahabu
abulile umwando
uwakashika aikishako
inengu ukwabula
ubusanso no
kushifumisha pa
chibumba icha
shingulwike umusumba.
Chinshi chalengele
ukuti Rahabu afwilishe
inengu? Nicho alishibe
ati Lesa ali nabena. Alefwaya
ukuti Lesa apusushu umweo
wakwe. Inengu shalaile ukwafwa
Rahabu no lupwa lwakwe.



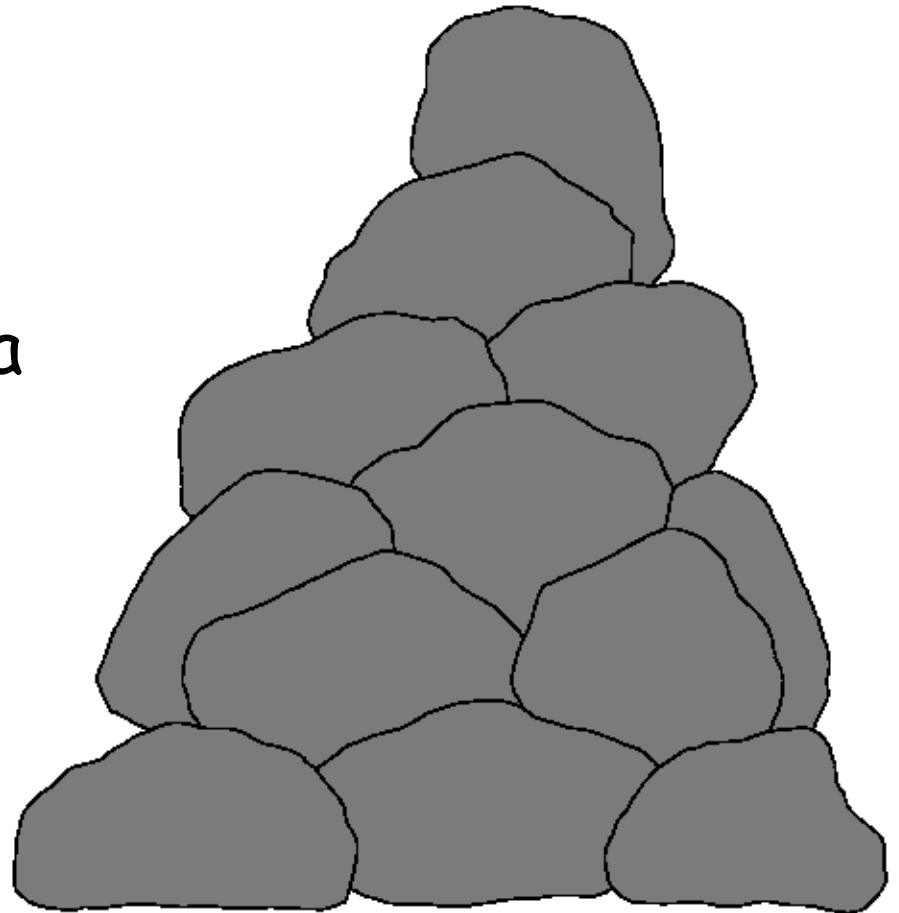
Ilyo tabalati bafike ku Yeriko, abena Israeli bali
nokwabuka umumana wa Yorodani ukwabukila mu
Kenani, ichalo chabulayo. Nomba tapali bulalo!
Balayabuka shani?

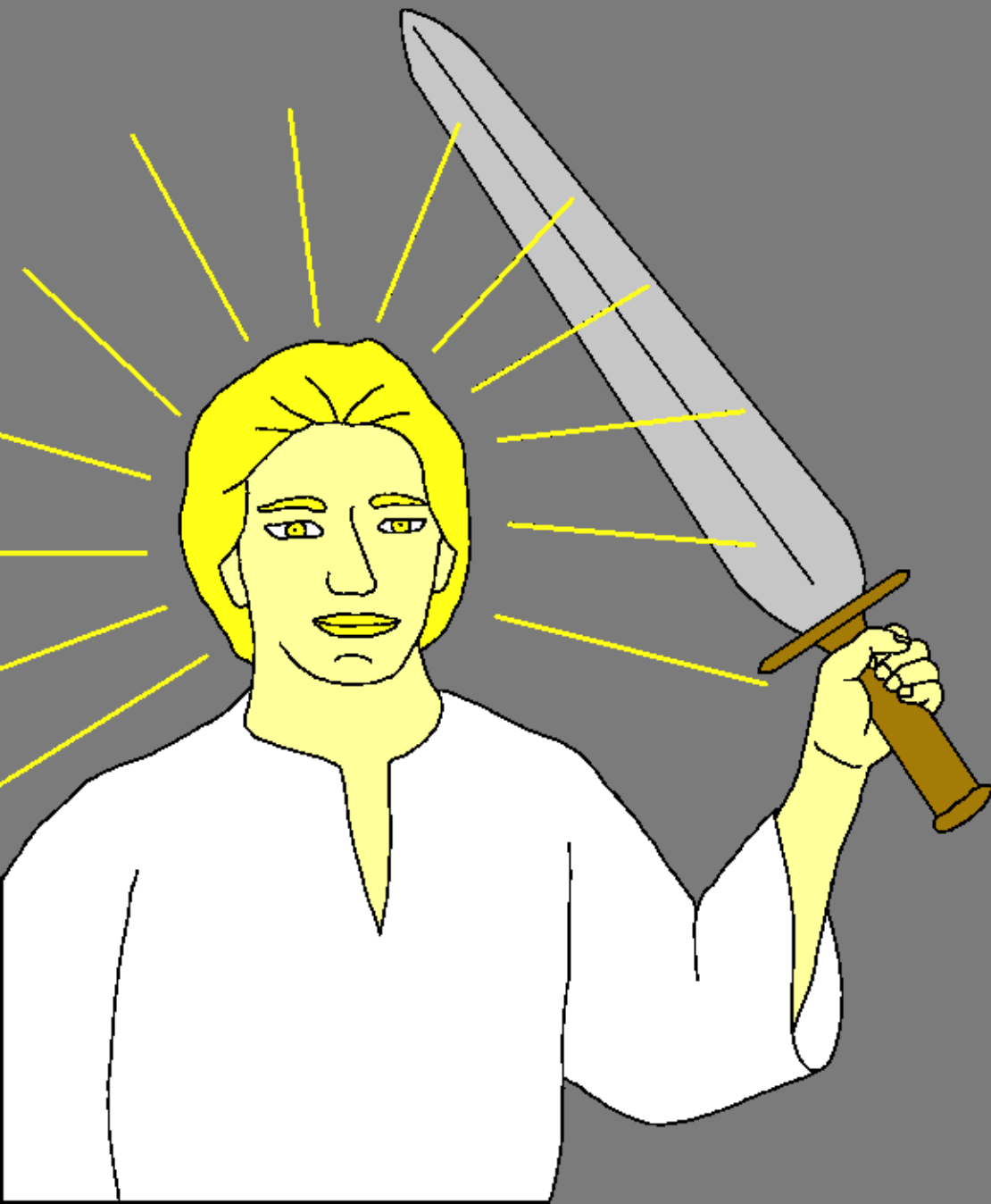


Lesá áebele Yóshua ukuti bashimapepo bafwile batangilila abashilika bankondo pamo pene na bantu, ninshi nabasenda ichipao ichasungile amafunde ikumi aya kwa Lesá. Lintu fye amakasa ya bashimapepo yakumishe ululamba lwa mumana, Lesá achitile ichisungusho. Lesá apangile inshila iyauma ukuchilinganya amenshi.



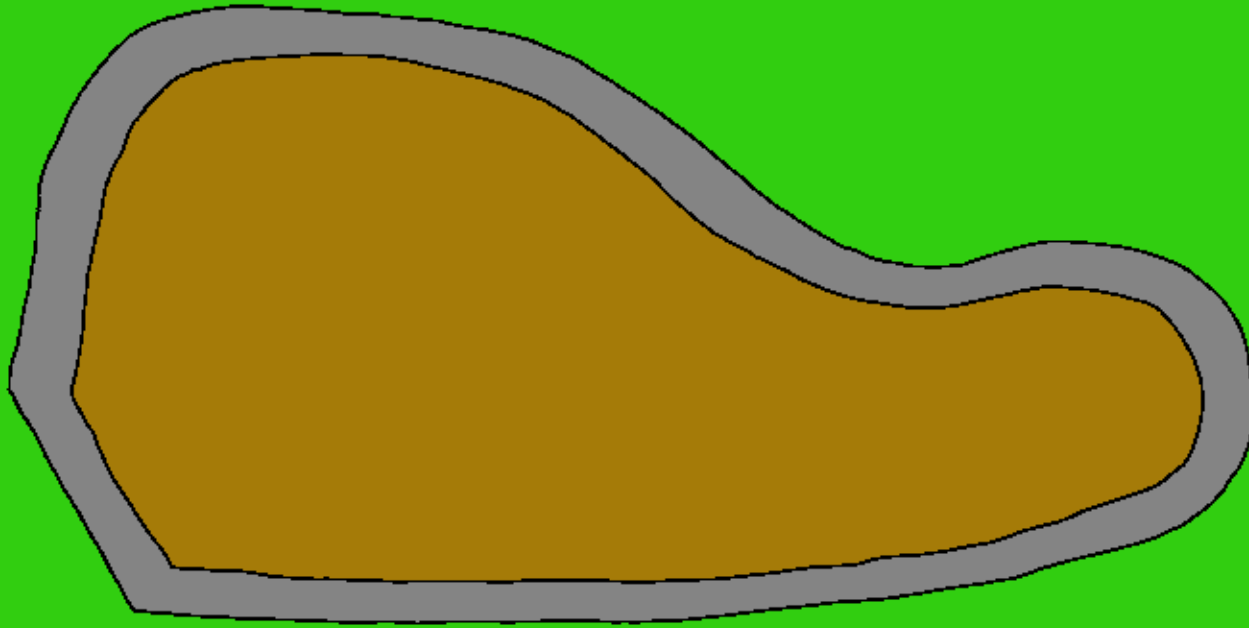
Panuma fye abantu bonse
bayabwike ukwabula
ubusanso, babikile amabwe
ikumi na yabili mululamba
lwa mumana wa Kenani.
Ichi chali chibukisho
kubantu ukubafwa
ukufunda abana babo pa
maka ayakalamba ayakwa
Lesane chitemwiko
chakwe.





Yeriko ashingulwike
ne chibumba
ichatikama kabili
ichakosa sana. Ilyo
Yoshua alepanga
ukusansa Yeriko,
Lesa atumimine
Kapitao wa fita fya
mumulu ukwibukisha
itungulushi ipya iya
bena Israeli ukuti
Lesa euchimfishako
abantu bakwe ku
bulwi.





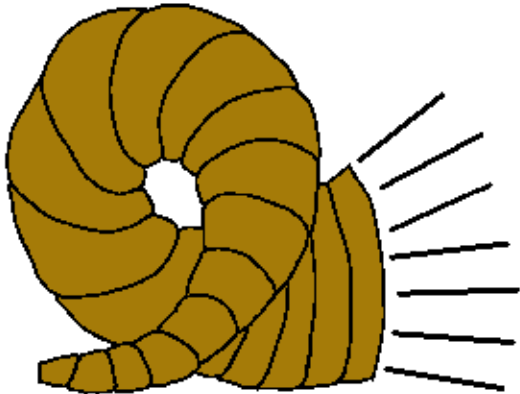
Lesa

aebele Yoshua umusango ali no kusanshilamo Yeriko. Umusango walikofye uwaibela. Abantu ba kwa Lesa bali no kushinguluka umusumba wa Yeriko umuku umo panshiku mutanda. Lelo imiku chinelubali pa bushiku bwalenga chinelubali. Panuma ya ifyo bali nokulisha ipenga nokupunda, ne fibumba fya Yeriko fyali nokupona nokusansaukila fye panshi.

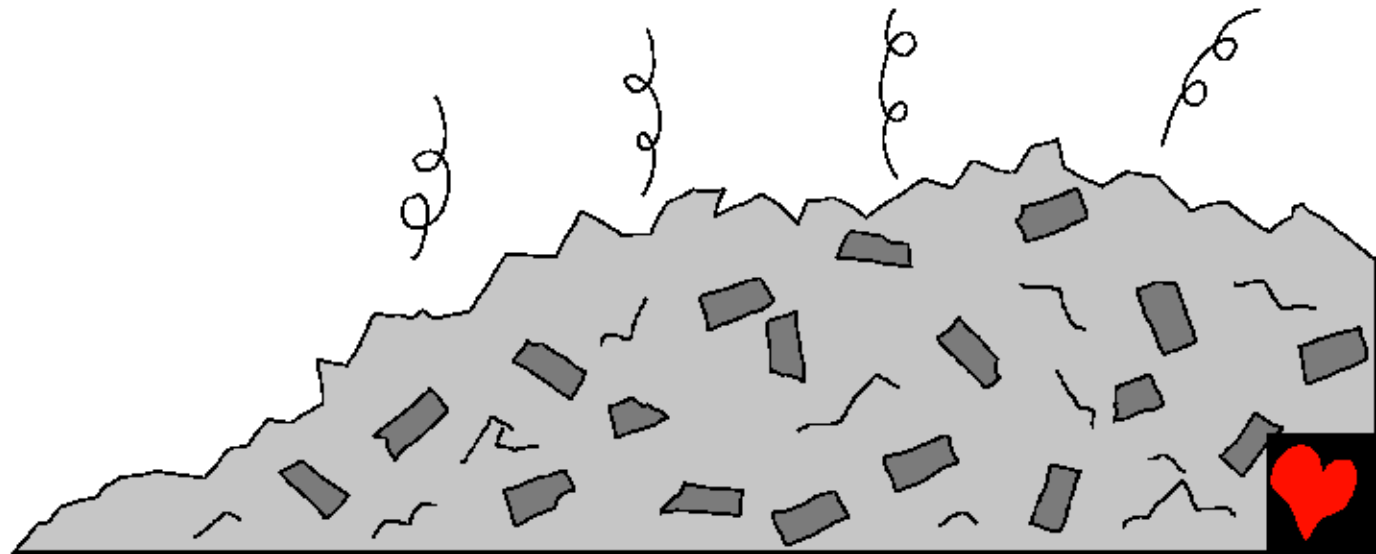


Yoshua ne fita fyakwe bachitile ukulingana ne
fyasosele Lesa. Limbi abena Jeriko balibasekele.
Lelo panuma ya kushinguluka bushiku
bwalenga chinelubali shimapepo alishishe
ipenga. Ngefyo fye Lesa alaile ...

7



IFIBUMBA
FIKALAMBA IFYA
JERIKO
FYABONGAIKA!





Ing'anda
fye
yakwa
Rahabu

mu chibumba eyashelekofye.
Alishiile umwando uwakashika ulelebela
pa windo. Mukwangufyanya abantu
bakwa Yoshua bapuswishe Rahabu
no lupwa lwakwe. Elyo umusumba
wa Yeriko wa onawilwe,
ngefyo Lesa asosele.





Mukushinshimuna Lesa,
Yoshua apele fyonse Golode,
Siluvele, nefyuma fye fyonse ifya
bena Yeriko ku mulimo wakwa Lesa.
Kabili abikile ichitipo pali onse
uwingafwaya ukukula chipyachipya
umusumba wa lubembu uwa Yeriko.





Pakashita fye akanono
umuntu onse aumfwile ifyo
Yoshua achimfinshe umusumba wa
Yeriko. Ichi chalengele bonse ukwishiba
ukuti Lesa ali na bantu bakwe.



Yoshua Atungulula

Ilyashi ukufuma mu cebo cakwa Lesa,
Baibele,

Chisangwa mu

Yoshua 1-6

“Ukulondolola kwa chebo chenu kuleta ulubuto.”
Amalumbo 119:130



Impela



Ili lyashi Iya mucipingo litweba pali Lesa wesu uwatubumbile kabili afwaya ukutilati mumwishibe.

Lesa alishiba twalichita ifntu ifibi, ifyo eta ulubembu. Ukupanikwa kwa lubembu nimfwa, lelo Lesa alitutemwa sana eicho atumine umwana wakwe Yesu ukutufwila palupanda nokulimwinwa pa membu shesu. Kabili Yesu alibuka kubafwa nokuya kumwakwe kumulu. Ngamwachetekela muli Yesu nokumulomba ukuti amyelele imembu shenu, alamyelela! Kabili alaisaikala muli imwe ililine, elyo mukekalanankwe umuyayaya.

Ngamwachetekela ati ichi echishinka, soseni amashiwi aya kuli Lesa: We mutemwikwa Yesu, nachetekela ukutila nimwe Lesa, lelo mwasangwike umuntu pakuti mufwile imembu shandi. Pali lelo muli abomi. Iseni mumweo wandi nokwelela imembu shandi pakuti mbe no bumi ubupya nokutila ubushiku bumo nkabe nenu umuyayaya. Ngafweni ukumyumfwila no kwikalila imwe ngo mwana wenu.

AMENI!

Belengeni Baibele chilabushiku nokulanda na Lesa!
Yohane 3:16

