

Ichipingo chabana
Chamiletela



Ruti:
Ilyashi lya
chitemwiko



Kalemba ni: Edward Hughes

Bakalenga wafikope: Janie Forest
Alastair Paterson

Abalembulwile: Lyn Doerksen

Abayalwile mu chibemba:
Bwembya Epidious Mulopa

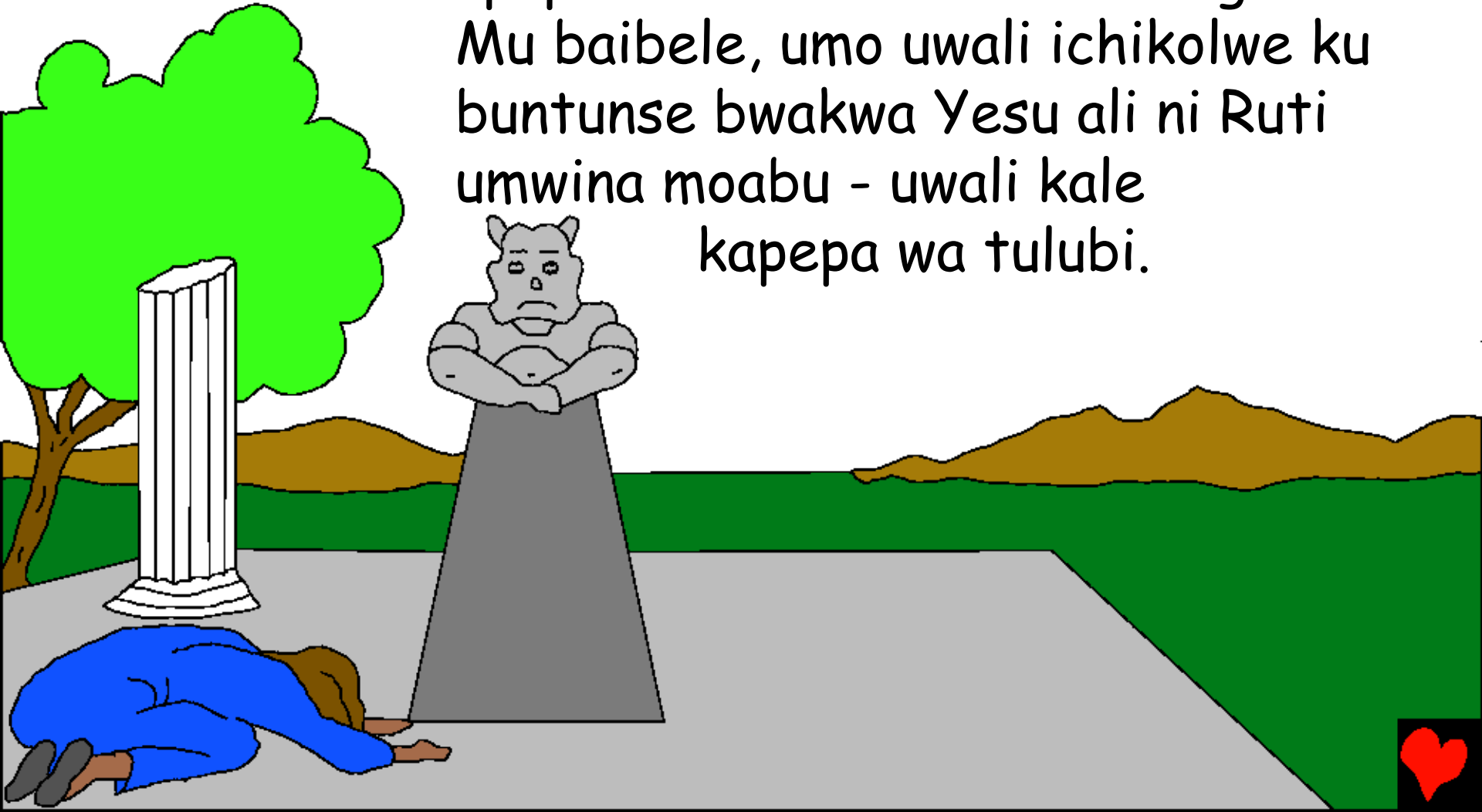
Icapangwa na: Bible for Children
www.M1914.org

©2025 Bible for Children, Inc.

Kupoke nsambu: Mwalikwata nsambu uku senda no ku printa ilyashi ili,
chikulu mwikashitisha.



Nga chakutila mwalikwete ishuko ilya kukumanya
abafyashi ba fikolwe fyaba shikulwinwe, nabonse
abantu aba mitangilile mulupwa lwenu, kuti limbi
mwapapa ati bali bantu bamusango shani.
Mu baibele, umo uwali ichikolwe ku
buntunse bwakwa Yesu ali ni Ruti
umwina moabu - uwali kale
kapepa wa tulubi.

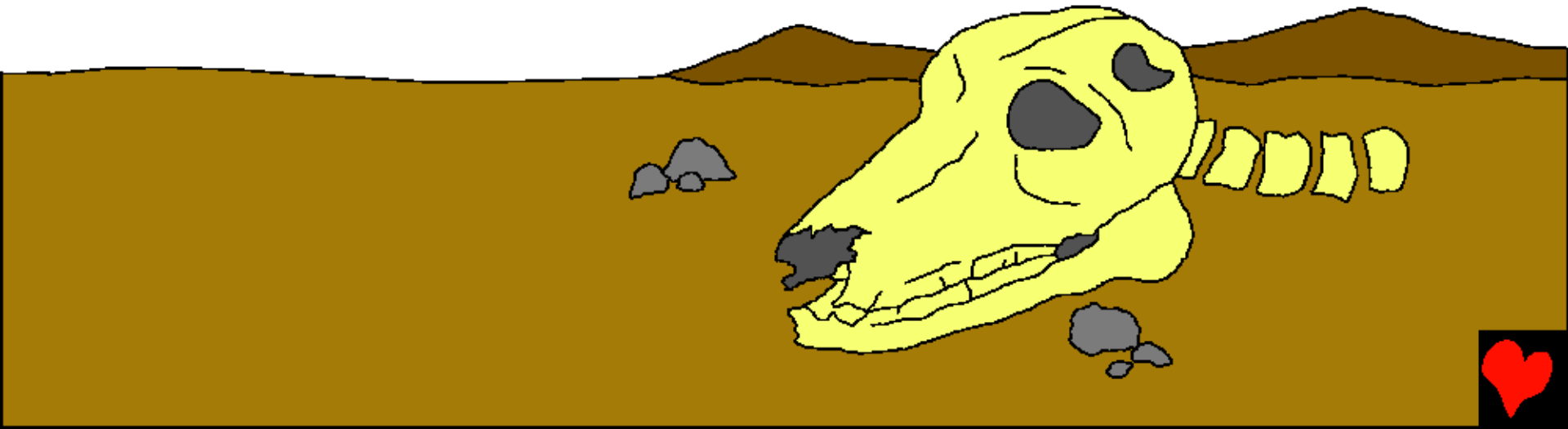


Ilyashi Iya kwa Ruti Iyatampila mu Islaeli panuma fye ya nshita ya kwa Samusoni, ilyo bantu bakwa Lesa balekele ukuchetekela no kubela Lesa.

Ichipowe ichikalamba cha ishile mu chalo.

Bushe mwalishiba Ichipowe? Chachine!

Ichipowe ni nshita ilyo ifisabo nangula ifilimwa tafile mena, kabili limo ne fitekwa pamo pene na bantu balafwa ku nsala.



Umuntu umo, Elemeleki, afumine ku Betelehemu no mukashi wakwe na bana bakwe babili, mukufwaya ifyakulya. Aile ku Moabu, ichalo uko abantu balepepa utulubi.



Ifintu
tafyaendele
bwino kuli Elemeleki no lupwa lwakwe.
Elemeleki alifwile, kabili pakonkele nabana
bakwe abaume
babili.

CHILIONI

ELEMELEKI

MALONI



Naomi, nombu mukamfwilwa, aumfwile ukuti Lesa alipempula abantu bakwe, ukubapela umukate.

Apangile ukubwelele ku mwabo. Nombu abakashana babili balachita Shani.

Naomi abakoseleshe ukubwelele ku

mayanda yabo mu Moabu mwine nokuya upwa kumbi.



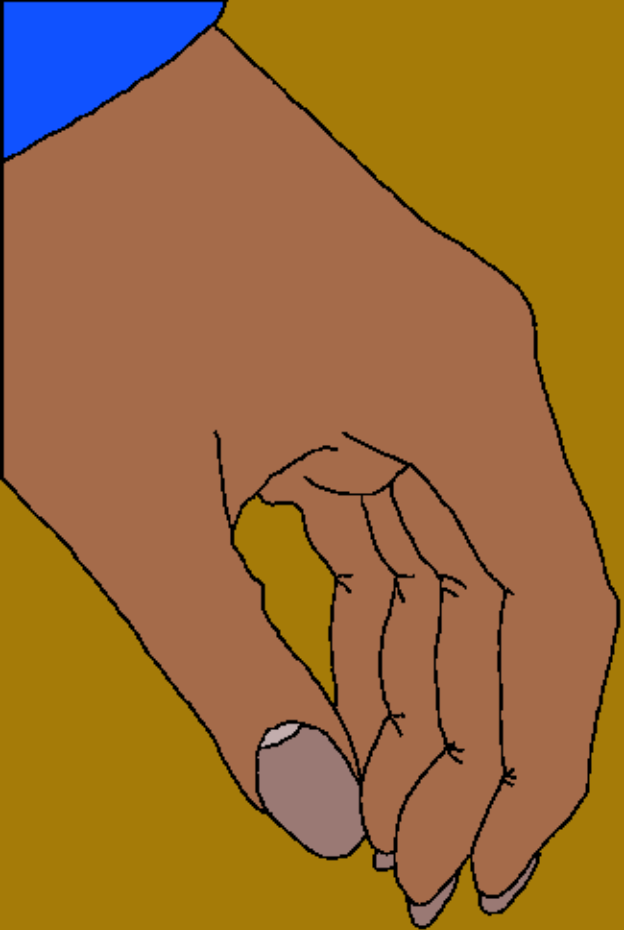
Opa abwelelemo ku lupwa lwakwe. Lelo Ruti ena alikaninina fye. Mukupusanako fye, Ruti alandile umushikakulo uusuma sana uwalelapa fye ukuti tekuti ashe nafyala.



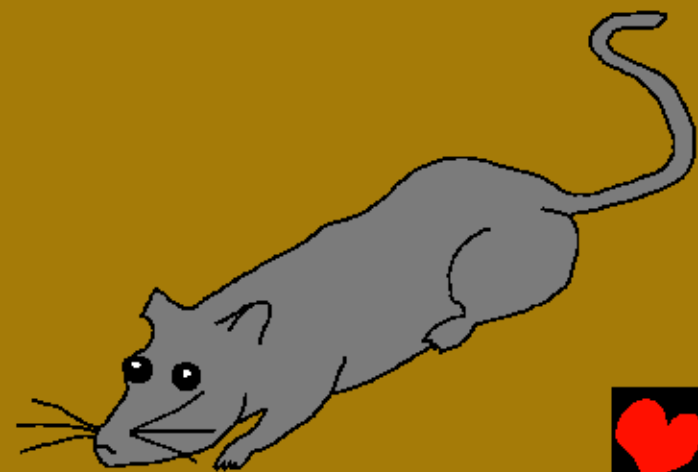
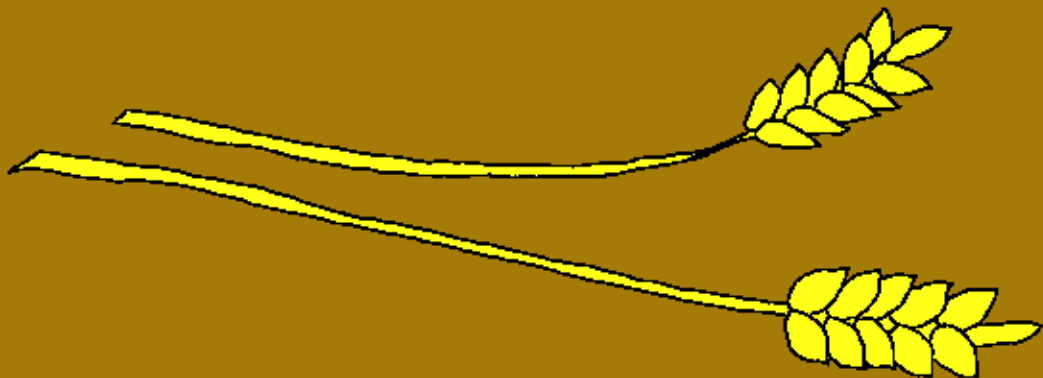
Ba chibusa bakwa Naomi abo ashile balisekelele ukubwela kwakwa Ruti mu Betelehemu. Nomba Ruti abalombele ukuti balemwita ati Mara (ukulula)

ukuchila ukuti balemwita ati Naomi (ukuyemba). Pantu Lesa umwine wamaka yonse ali muleka ukuba uwa bulanda. Nomba abwelelemo ukwabula nangu chimo - akwete fye Ruti.





Nangula Ruti kunuma apepele utulubi pamo nga abengi aba ku Moabu, apilibwike ukufuma uko nokwamba ukupepa Lesa wa mweo uwa bena Israeli. Ruti alibombeshe pa maka ukumona ukuti Naomi akwete ichakulya ichalinga no kukumanina. Chila bushiku akonkele aba kusepa mu mabala no kutoola utwaleshalamo.





Boasi, umwine we bala,
aumfwile ifyo Ruti
achitile bwino kuli
nafyala. Ilyo
amukumenye, Boasi
alimwafwile
mukukonkomesha
abalesepa mwibala
lyakwe ukulashamo
ifingi ngabasepa
pakutila Ruti aletolamo
ifingi. Boasi atampile
ukutemwa Ruti.





Ilyo Ruti ashimikileko
Naomi pa mulandu wakwa
Boasi no luse lwakwe,
namayo umukalamba
atampile ukulumbanya
Lesa. "Uyu muntu
wamulupwa lwesu,
umo uwa mupepi
fye."





Mukuya kwa nshita,
Boasi afwaile ukuupa
Ruti pakuti
bengalasunga
Naomi pamo pene
fye na mabala ya
lupwa. Lelo uwa
mulupwa lwa mupepi

sana ewali nokupelwa insambu ya kubalilapo
fye. Chasangilwe ukuti uyu ena alekabila
fye ukupyana amabala lelo talefwaya
ukesenda Ruti ngo mukashi. Nomba
amafunde yali yakuti uwakupyana afwile
asenda amabala pamopene no
mwanakashi ngo mukashi.



Munshiku shilya, abantu tabeleposhanya fye pakupanga ichipangano. Boasi afuulile ulubali lumo ulwa ndyato shakwe pa chintubwingi no kupela ulya umbi umwaume uwa mulupwa. Apa ninshi afuta umulandu wapwa. Ruti nomba alasanguka muka Boasi.



Mukuchita ichi ninshi Ruti na Naomi baba ba mulupwa lwakwa Boasi.



Boasi na Ruti bafyele no
mwana uwakubalilapo
ishina lyakwe Obedi.
Uyu aishileba shikulu
wakwa Davidi, imfumu
yalumbwike iya bena
Israeli.



Lelo nakuchilapo mukuwama, umwana Obedi chikolwe cha mfumu Yesu Kristu. Yesu aishiile mulupwa lwakwa Davidi mukwisaba imfumu ya shamfumu kabili kapususha we sonde lyonse.



Ruti: Ilyashi Iya chitemwiko

Ilyashi ukufuma mu cebo cakwa Lesa,
Baibele,

Chisangwa mu

Ruti

“Ukulondolola kwa chebo chenu kuleta ulubuto.”
Amalumbo 119:130



Impela



Ili lyashi Iya mucipingo litweba pali Lesa wesu uwatubumbile kabili afwaya ukutilati mumwishibe.

Lesa alishiba twalichita ifntu ifibi, ifyo eta ulubembu. Ukupanikwa kwa lubembu nimfwa, lelo Lesa alitutemwa sana eicho atumine umwana wakwe Yesu ukutufwila palupanda nokulimwinwa pa membu shesu. Kabili Yesu alibuka kubafwa nokuya kumwakwe kumulu. Ngamwachetekela muli Yesu nokumulomba ukuti amyelele imembu shenu, alamyelela! Kabili alaisaikala muli imwe ililine, elyo mukekalanankwe umuyayaya.

Ngamwachetekela ati ichi echishinka, soseni amashiwi aya kuli Lesa: We mutemwikwa Yesu, nachetekela ukutila nimwe Lesa, lelo mwasangwike umuntu pakuti mufwile imembu shandi. Pali lelo muli abomi. Iseni mumweo wandi nokwelela imembu shandi pakuti mbe no bumi ubupya nokutila ubushiku bumo nkabe nenu umuyayaya. Ngafweni ukumyumfwila no kwikalila imwe ngo mwana wenu.

AMENI!

Belengeni Baibele chilabushiku nokulanda na Lesa!
Yohane 3:16

