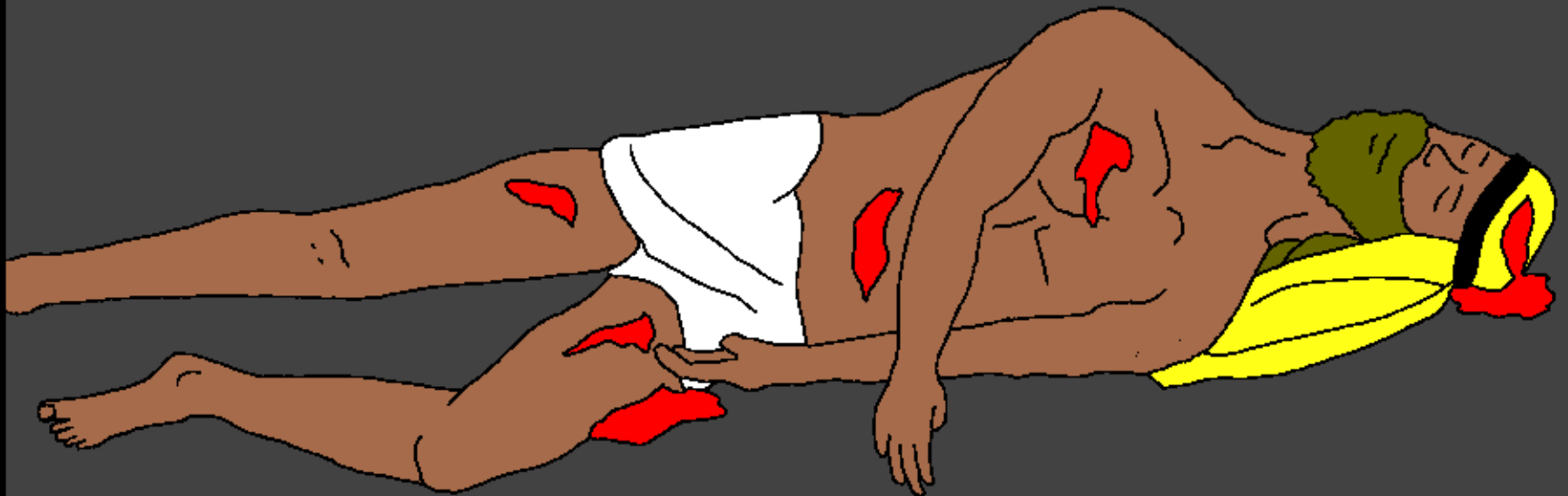


Ichipingo chabana
Chamiletela

Umwina Samariya wa Luse



Kalemba ni: Edward Hughes

Bakalenga wafikope: M. Maillot; Lazarus
Alastair Paterson

Abalembulwile: Ruth Klassen; Sarah S.

Abayalwile mu chibemba:
Bwembya Epidious Mulopa

Icapangwa na: Bible for Children
www.M1914.org

©2025 Bible for Children, Inc.

Kupoke nsambu: Mwalikwata nsambu uku senda no ku printa ilyashi ili,
chikulu mwikashitisha.



"Kasambilisha! Bushe kuti nachita shani pakuti nkakwate umweo wamuyayaya?" Uyu uwa ipwishe ili ilipusho ali ni shi mafunde, alefwaya ukwasha Yesu.



"Bushe ifunde lyakwa Lesa Iya landa shani?" Yesu alimwaswike.



"Temwa Lesa pamo no mwina mupalamano obe," shi mafunde alyaswike. "Nomba umwina mupalamano wandi ninani?" Shi mafunde aipwishe nakabili.



Mukwasuka ilipusho, Yesu ashimike umulumbe uwali pa mulumendo umo uwali pa bulendo mu nshila ukufuma ku Yerusalemu ukuya ku Yeriko. Uyu muntu bali musanshile ku fipondo.

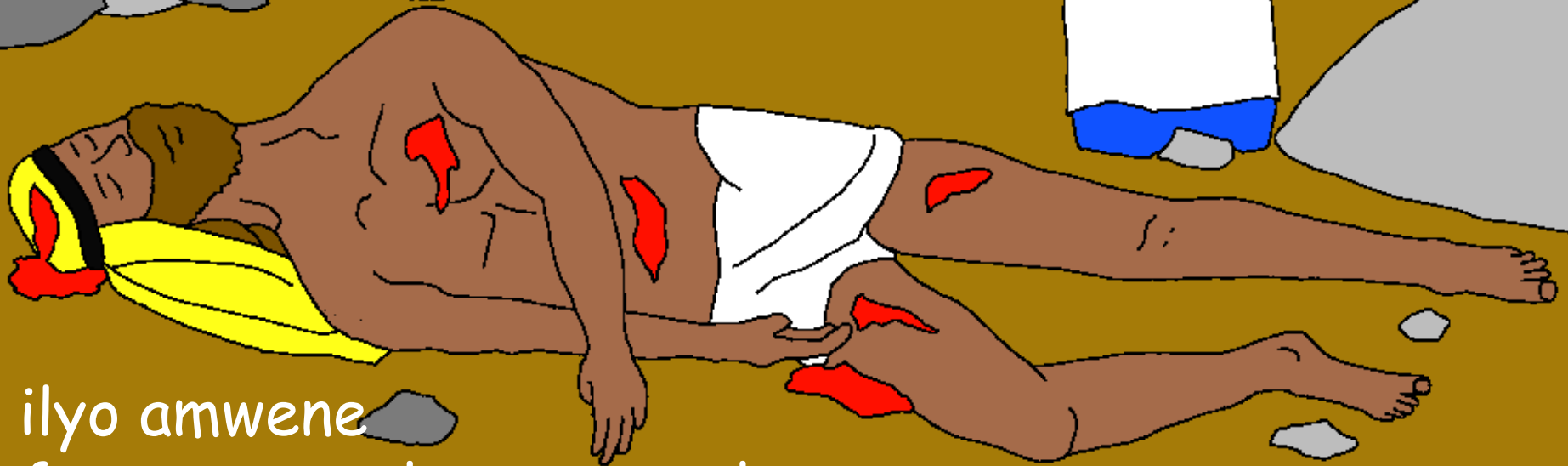


Ifipondo fya mwibile fyonse ifyasangilwe pali ena,
ku chabulanda ukusendela fye kumo ne
fyakufwala fyali pa mubili wakwe. Kabili
bali muchenene sana, ukumusha
fye mumfwa

yekeyeka mumbali
ya musebo.



Lelo ku cheshuko shimapepo umo
alishile. Awe uyu kwena aleyafwa
uyu muntu ba chenene.
Awe tefyo chali,



ilyo amwene
fye umuntu alesuma umulopa,
apitile lulamba lubali lwa nshila.



Tapapitile nshita inshindo shamakasa shalanga ukuti
umuntu naumbi aleisa. Uyu ali mwina Levi - uwali
nikafwa wa bashimapepo mwi tempele.
Aloleshepofye pa muntu bachenene,
awe atampa

nokulaya ukwabula
ukumwafwa.



Mukukulekelesha kwa ishile umu
Samariya munshila. Aba Yuda tabale
yampana nokumfwana na bena
Samariya.



Abantu abaleumfwa ku mulumbe wa kwa
Yesu taba enekele ukuti umu Samariya
kuti aba impalume. Lelo ali
nimpalume.



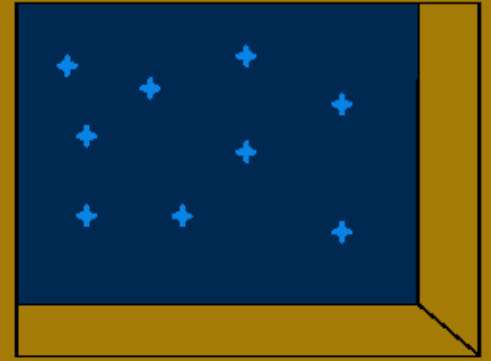
Umwina Samariya
alisakamene, aliminine no kwafwa.



Umwina Samariya
alifukeme, mu mutembo
abikile umuti mufilonda
no kufikakila ne nsalu ya
filonda. Panuma
amwafwile ukunina pali
punda wakwe.



Pa Ng'anda ya beni pa mbali
yamusebo, umwina Samariya asungile
no kutensha
umulwele
ubushiku bonse.



Uluchelo ilyo bwachele umu Samariya
alipiile umwine wa ng'anda ya beni
ukutula alesunga
umulwele mpaka
fye akapole.



Ilyo umulumbe wapwile. Yesu aipwishe,
"Bushe uwali umwina mupalamano wa
uyu muntu ifipondo fya chenene nani?"





Shi mafunde alyaswike ati,
"Umwina mupalamano
wakwe ali mu Samariya
uwalangile uluse."



"Kabiye uchite ifyo fine," Yesu aebele shi mafunde.
Umwina mupalamano muntu onse uulekabila

ubwafwilisho. Kuti
twalanga ichitemwiko
mu kwafwilisha abantu
abalekabila
ubwafwilisho.
Ichi chilasekesha
Lesa.



Umwina Samariya wa Luse

Ilyashi ukufuma mu cebo cakwa Lesa,
Baibele,

Chisangwa mu

Luka 10

“Ukulondolola kwa chebo chenu kuleta ulubuto.”
Amalumbo 119:130



Impela



Ili lyashi Iya mucipingo litweba pali Lesa wesu uwatubumbile kabili afwaya ukutilati mumwishibe.

Lesa alishiba twalichita ifntu ifibi, ifyo eta ulubembu. Ukupanikwa kwa lubembu nimfwa, lelo Lesa alitutemwa sana eicho atumine umwana wakwe Yesu ukutufwila palupanda nokulimwinwa pa membu shesu. Kabili Yesu alibuka kubafwa nokuya kumwakwe kumulu. Ngamwachetekela muli Yesu nokumulomba ukuti amyelele imembu shenu, alamyelela! Kabili alaisaikala muli imwe ililine, elyo mukekalanankwe umuyayaya.

Ngamwachetekela ati ichi echishinka, soseni amashiwi aya kuli Lesa: We mutemwikwa Yesu, nachetekela ukutila nimwe Lesa, lelo mwasangwike umuntu pakuti mufwile imembu shandi. Pali lelo muli abomi. Iseni mumweo wandi nokwelela imembu shandi pakuti mbe no bumi ubupya nokutila ubushiku bumo nkabe nenu umuyayaya. Ngafweni ukumyumfwila no kwikalila imwe ngo mwana wenu.

AMENI!

Belengeni Baibele chilabushiku nokulanda na Lesa!
Yohane 3:16

