

Ichipingo chabana
Chamiletela

Yesu aposha impofu



Kalemba ni: Edward Hughes

Bakalenga wafikope: Janie Forest
Alastair Paterson

Abalembulwile: Ruth Klassen

Abayalwile mu chibemba:
Bwembya Epidious Mulopa

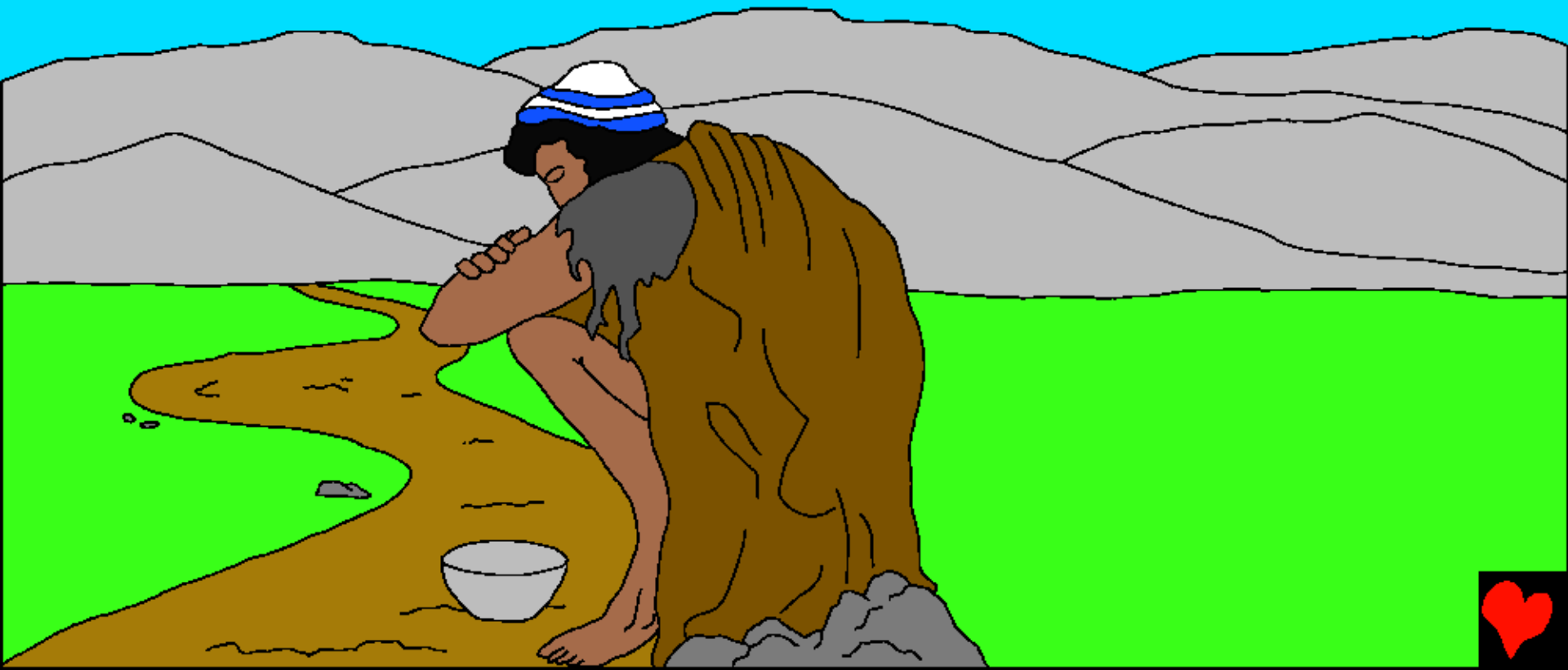
Icapangwa na: Bible for Children
www.M1914.org

©2025 Bible for Children, Inc.

Kupoke nsambu: Mwalikwata nsambu uku senda no ku printa ilyashi ili,
chikulu mwikashitisha.



Batimeo (ba ti me yo) afyelwe impofu, aikele mululamba lwa musebo mupepi na ku Yeriko. Alelolombaisha fye. Limbi bamo abakwete ichitemwiko kuti bamupelako limbi ka ngwee nangula aka chakulya ilyo balepita munshila.



Bushiku bumo, Inshila ya pabuka mwaiswile abantu.
Batimeo aumfwile inshindo sha makasa ayengi.
Chimo ichishitika lyonse chilechitika.
Mukwangufyanya fye, Impofu yaishibe ifyalechitika.



Yesu wa ku Nazareti ali mumusumba. Amabumba ya bantu balilongene mu kumfwa ukusambilisha kwakwe.



"Yesu, mwana Davidi, mbelelako uluse!" Chinshi Batimeo alilile umusango uyu? Chinshi chalengele ukuti atontonkanye ati yesu kuti amwafilisha? Limbi



alyumfwileko pafyo yesu aposeshe bambi. Ba nkomamatwi, bambi bali ni ba chibulu, bambi bali abalemana - na bambi bali ni mpofu, ngefyo ena ali. "Yesu, mwana Davidi, mbelelako uluse," Batimeo apundile kabili na kabili. Ishiwi lyakwe lyaumfwike ne subilo.





Batimeo ali
shininkishe ichintu
chimo. Ngachakutila
tafwilwe apa pene,
takatale akwata
ishuko nakabili ilya
kupola. Yesu limbi
tekuti apitile muli ilya
nshila nakabili.





Batimeo afwaile
aipalamike kuli
Yesu. Lelo abantu
tabalesela iyo.
"Sssshhh!"
balimwebele.
Bamwebele
ukutalala tondolo.

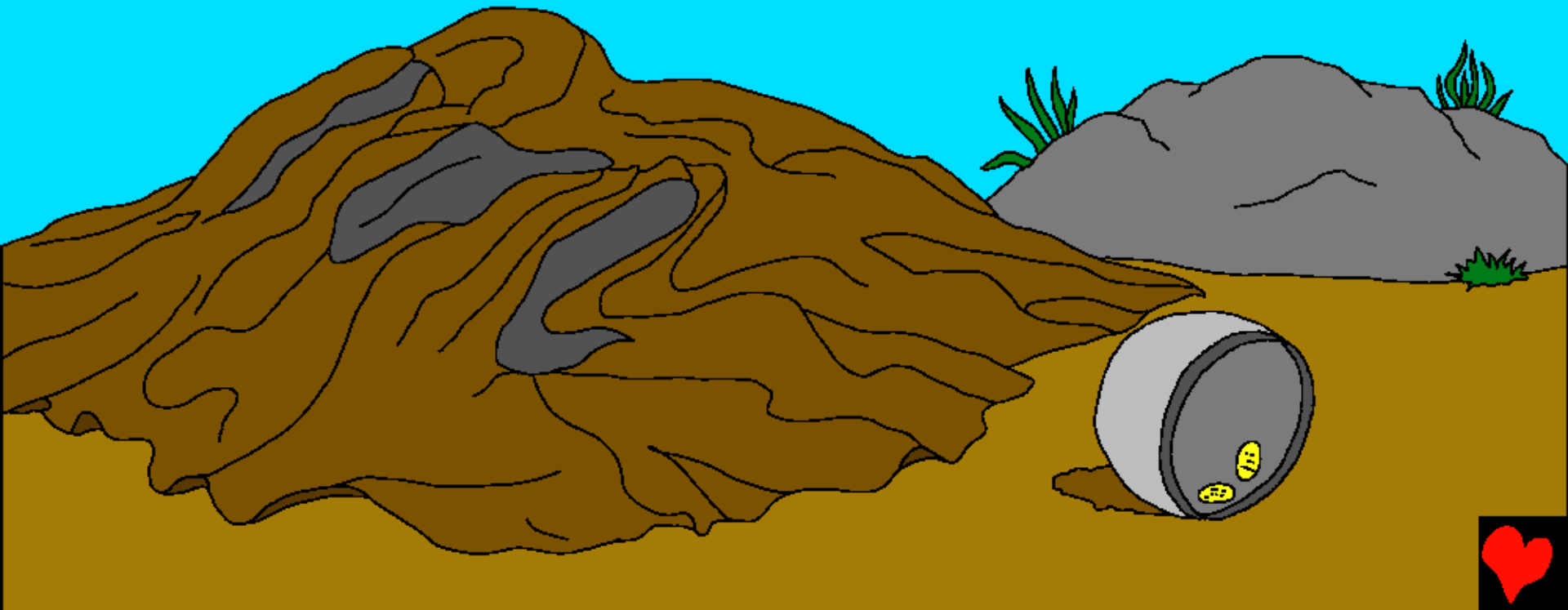




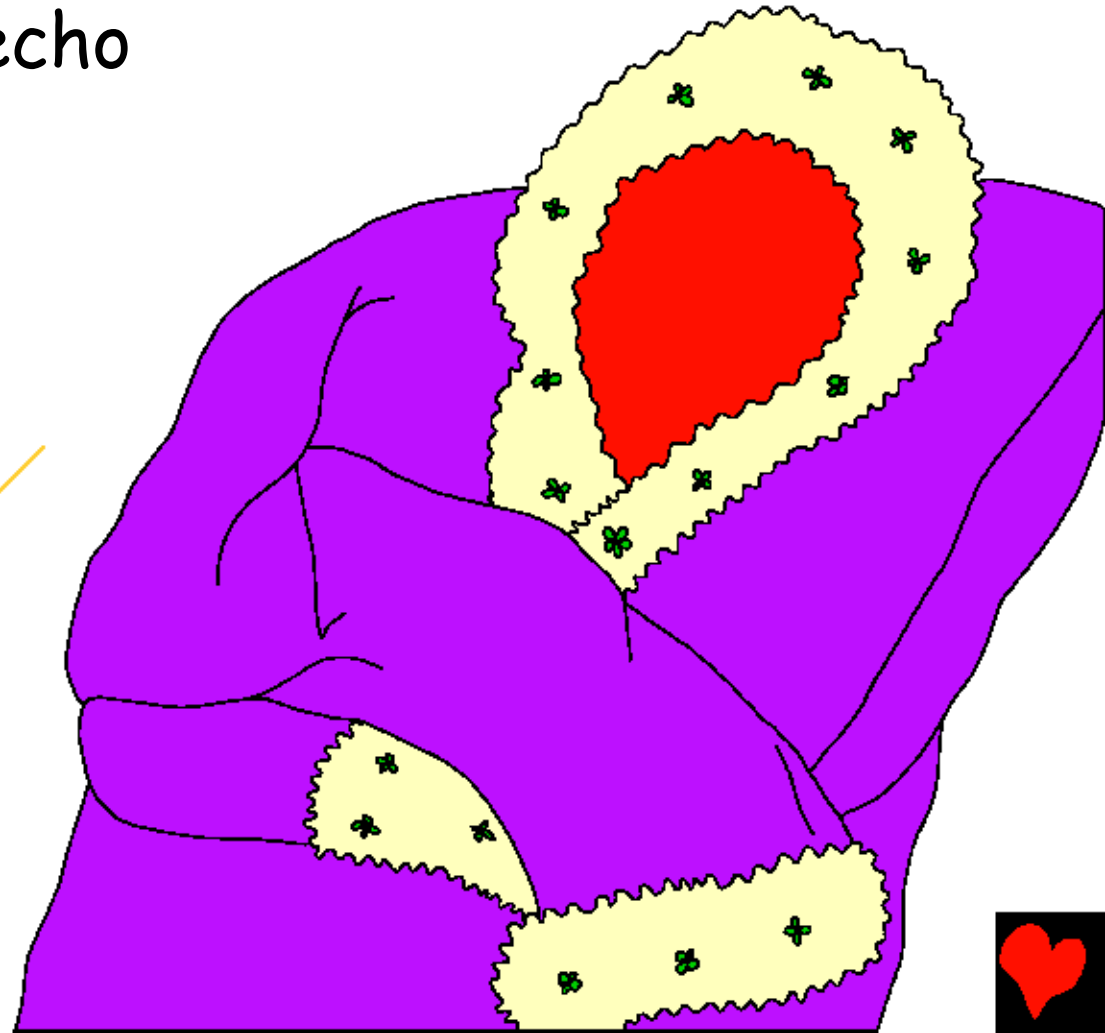
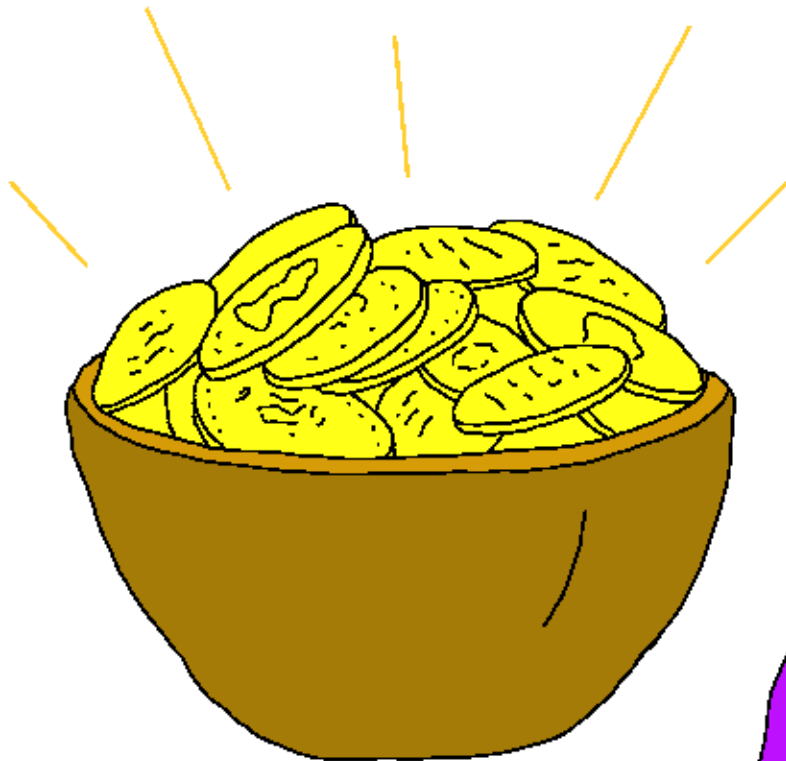
Lelo Batimeo taumfwile ukumukalipila nakalya. Akonkenkenyepo fye ukupundisha. Apopene Yesu aliminine! aumfwile kuli Batimeo! Abebele ukuleta impofu pantu ali! "Ba uwa nsaansa," abantu baebele Batimeo. "Ima. Yesu alekwita."



Panuma ya kuposa isaba lyakwe, Batimeo aimine nokwisa kuli Yesu.



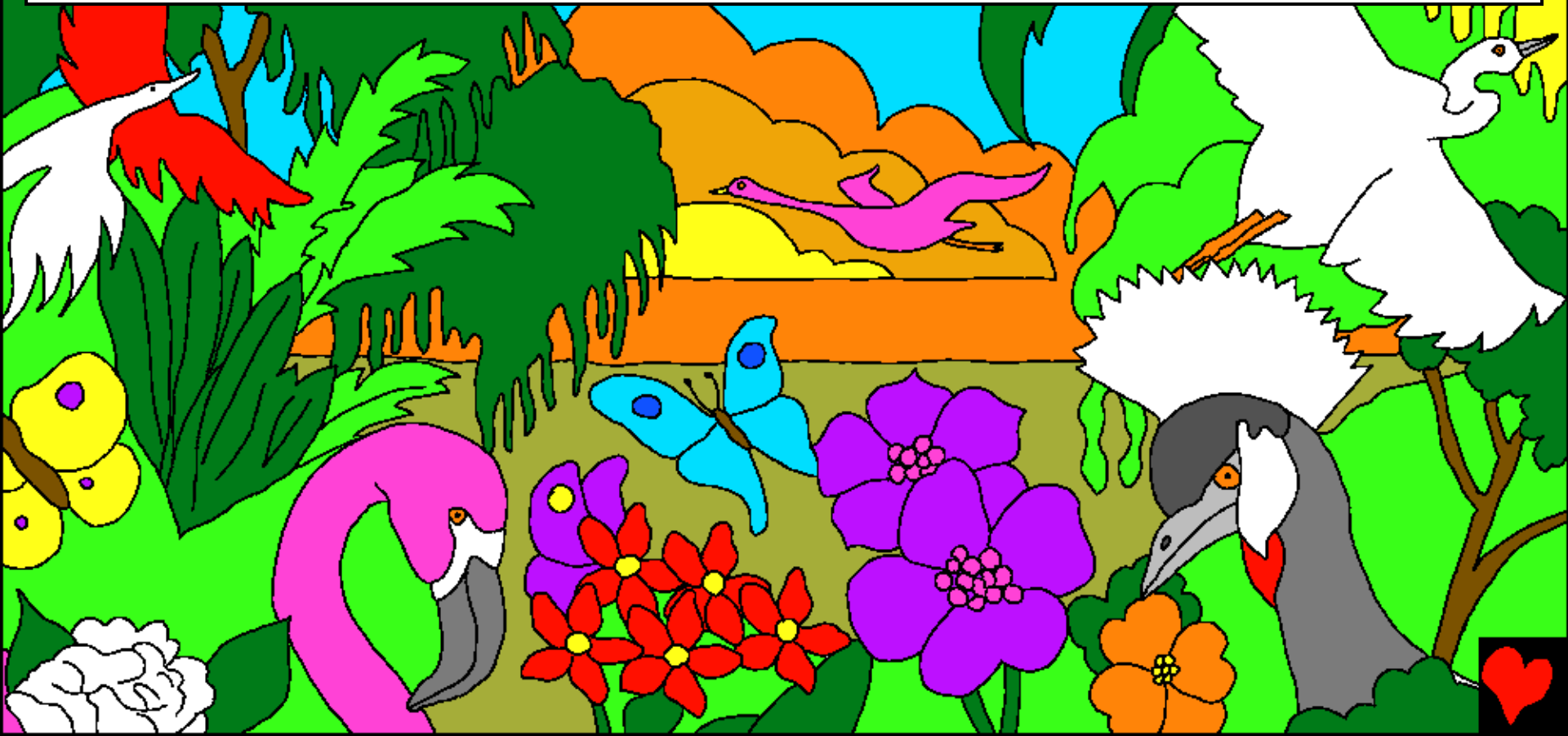
"Chinshi ulekabila ukuti nkuchitile?" Yesu alimwipwishe. Ngachakutila chali nimwe nga mwayaswike shani? Bushe nga mwalombele indalama ishingwi nangula ifyakufwala ifingi ifisuma? Bushe icho echo Batimeo adefwaya?



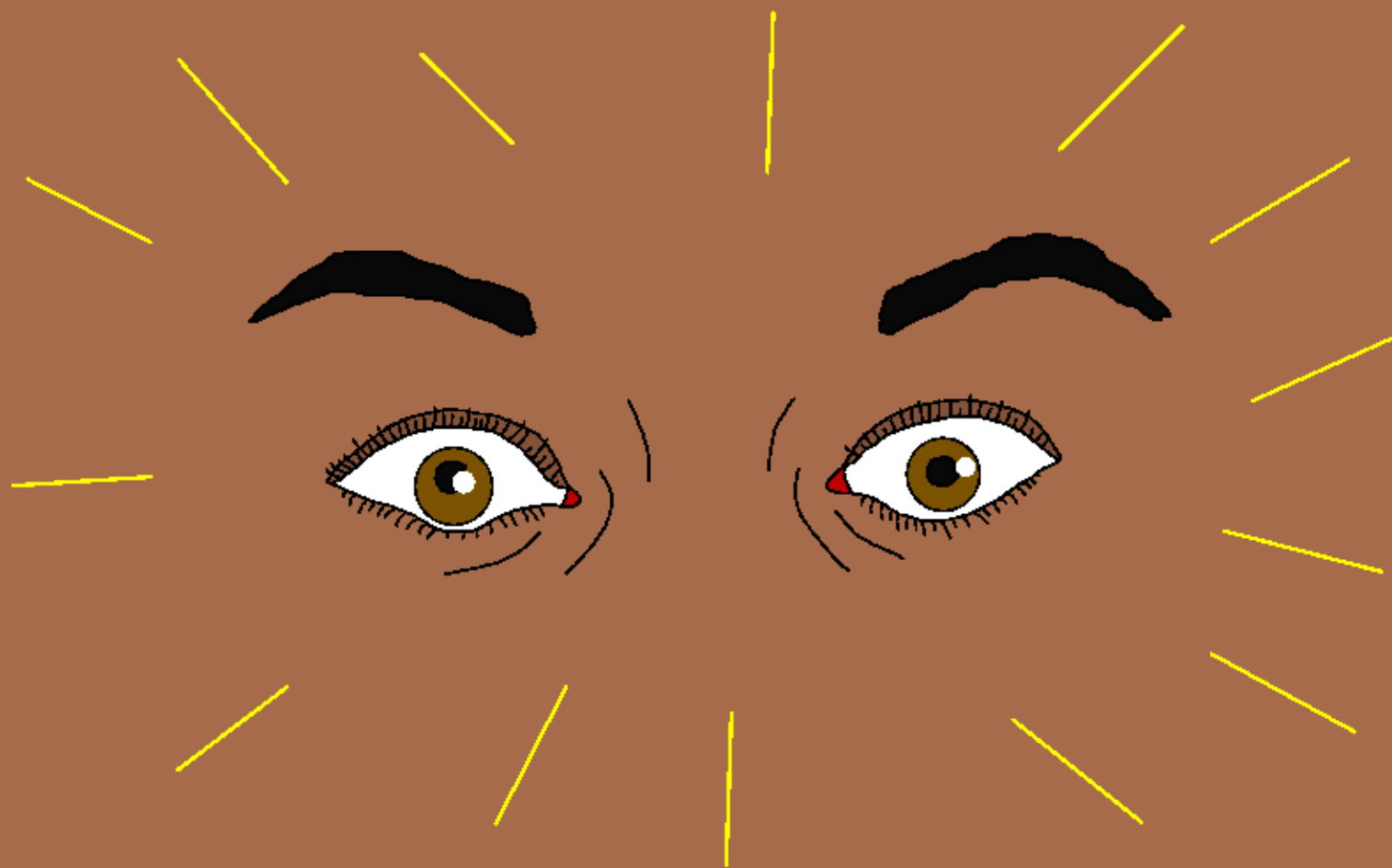
Awe Batimeo uwali impofu talombele
Yesu Golode nangula ifyakufwala
ifisuma. Namwishiba icho
alekabila.



“Shikulu lekeni mpoke ukumona kwandi.” Batimeo alekabila ukumona! Ukumona ifimuti ne fyuni ukubikapo fye no busuma bonse ubwa bumbo bwakwa Lesa. Alefwaya ukumona pakuti aleisunga umwine ukuchila ukulombaisha fye.



Elyo Yesu aebele Batimeo ati: Poka ukumona kobe.
Ichitetekelo chobe na chikupususha.



Apopene fye apokelele ukumona kwakwe, no kukonka Yesu. Takwete na amashiwi lelo alandile fye ati; Lesa aliwama! Namposha! Chali chabuseko kuli Batimeo.



Ilyo abantu bonse,
bamwene ichi, bapele
amalumbo kuli Lesa,
nakabili bamwene amaka
aya shaiwamina aya
mwana wakwa Lesa, Yesu,
ukupela ukumona mpofu
iyale chula fye no
kulombaisha.



Yesu aposha impofu

Ilyashi ukufuma mu cebo cakwa Lesa,
Baibele,

Chisangwa mu

Mariko 10, Luka 18, Yohane 9

“Ukulondolola kwa chebo chenu kuleta ulubuto.”
Amalumbo 119:130



Impela



Ili lyashi Iya mucipingo litweba pali Lesa wesu uwatubumbile kabili afwaya ukutilati mumwishibe.

Lesa alishiba twalichita ifntu ifibi, ifyo eta ulubembu. Ukupanikwa kwa lubembu nimfwa, lelo Lesa alitutemwa sana eicho atumine umwana wakwe Yesu ukutufwila palupanda nokulimwinwa pa membu shesu. Kabili Yesu alibuka kubafwa nokuya kumwakwe kumulu. Ngamwachetekela muli Yesu nokumulomba ukuti amyelele imembu shenu, alamyelela! Kabili alaisaikala muli imwe ililine, elyo mukekalanankwe umuyayaya.

Ngamwachetekela ati ichi echishinka, soseni amashiwi aya kuli Lesa: We mutemwikwa Yesu, nachetekela ukutila nimwe Lesa, lelo mwasangwike umuntu pakuti mufwile imembu shandi. Pali lelo muli abomi. Iseni mumweo wandi nokwelela imembu shandi pakuti mbe no bumi ubupya nokutila ubushiku bumo nkabe nenu umuyayaya. Ngafweni ukumyumfwila no kwikalila imwe ngo mwana wenu.

AMENI!

Belengeni Baibele chilabushiku nokulanda na Lesa!
Yohane 3:16

