

Icipingo icabana
Camiletela



Kumulu,
kung'anda
yakwa Lesa



Calilembwa na: Edward Hughes

Uwalangilishe: Lazarus; Alastair Paterson

Yasendwa na: Sarah S.

Abapilibwile: Phiri Williams

Icapangwa na: Bible for Children
www.M1914.org

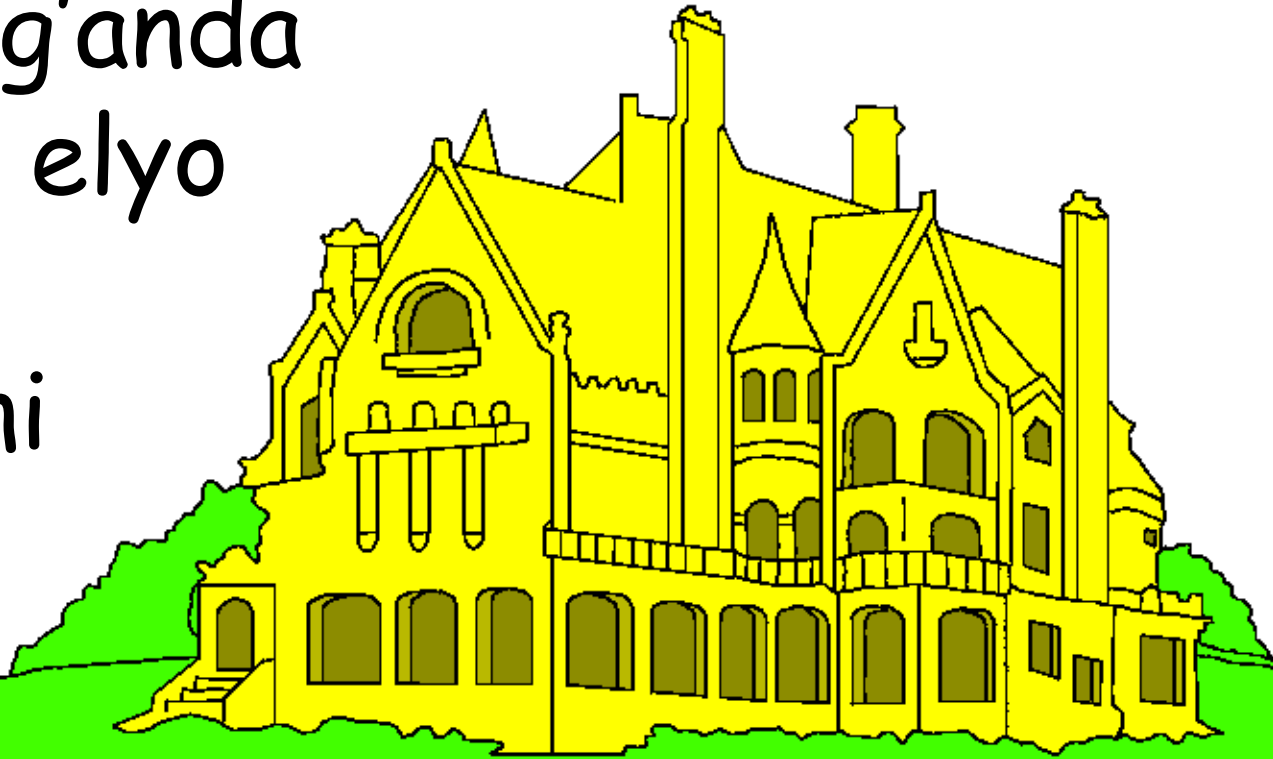
©2020 Bible for Children, Inc.

Kupoke nsambu: Mwalikwata nsambu uku senda
no ku printa ilyashi ili, cikulu mwikashitisha.

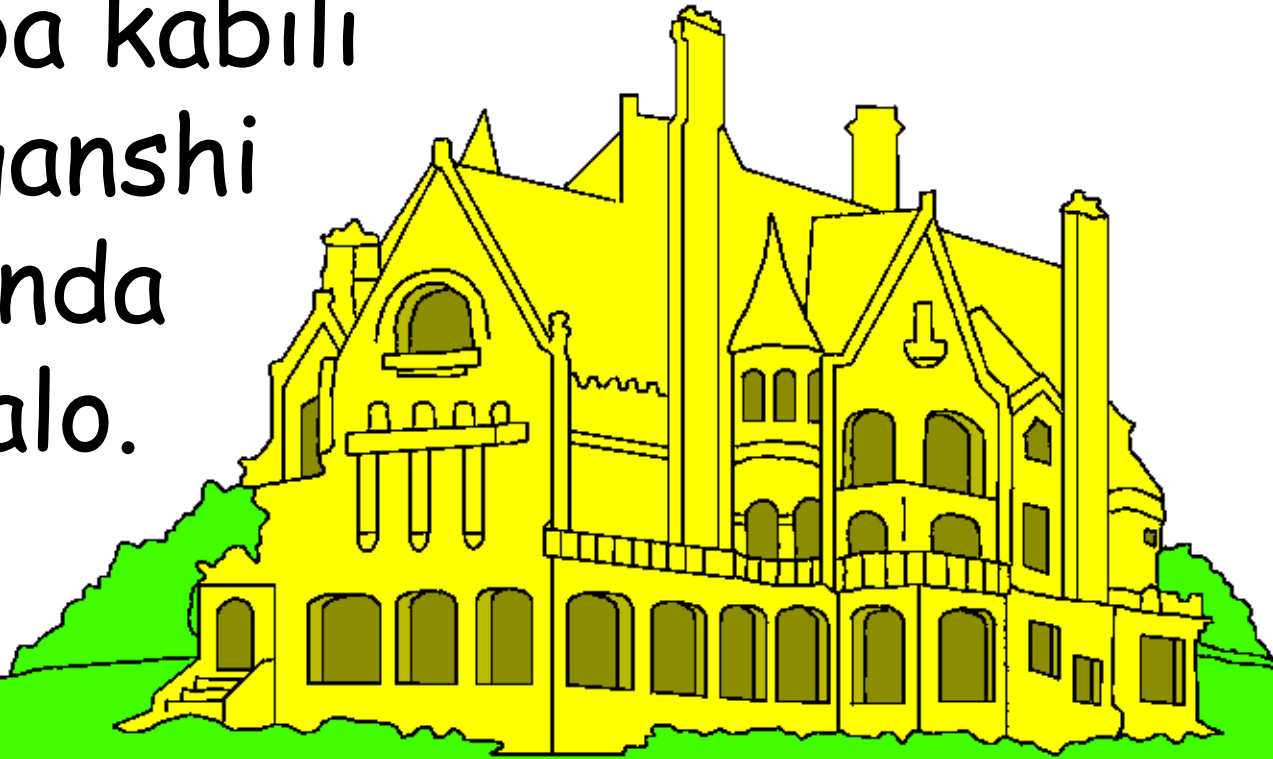


Lintu Yesu aikele pe sonde alyebele
abasambi bakwe ifyakumulu.

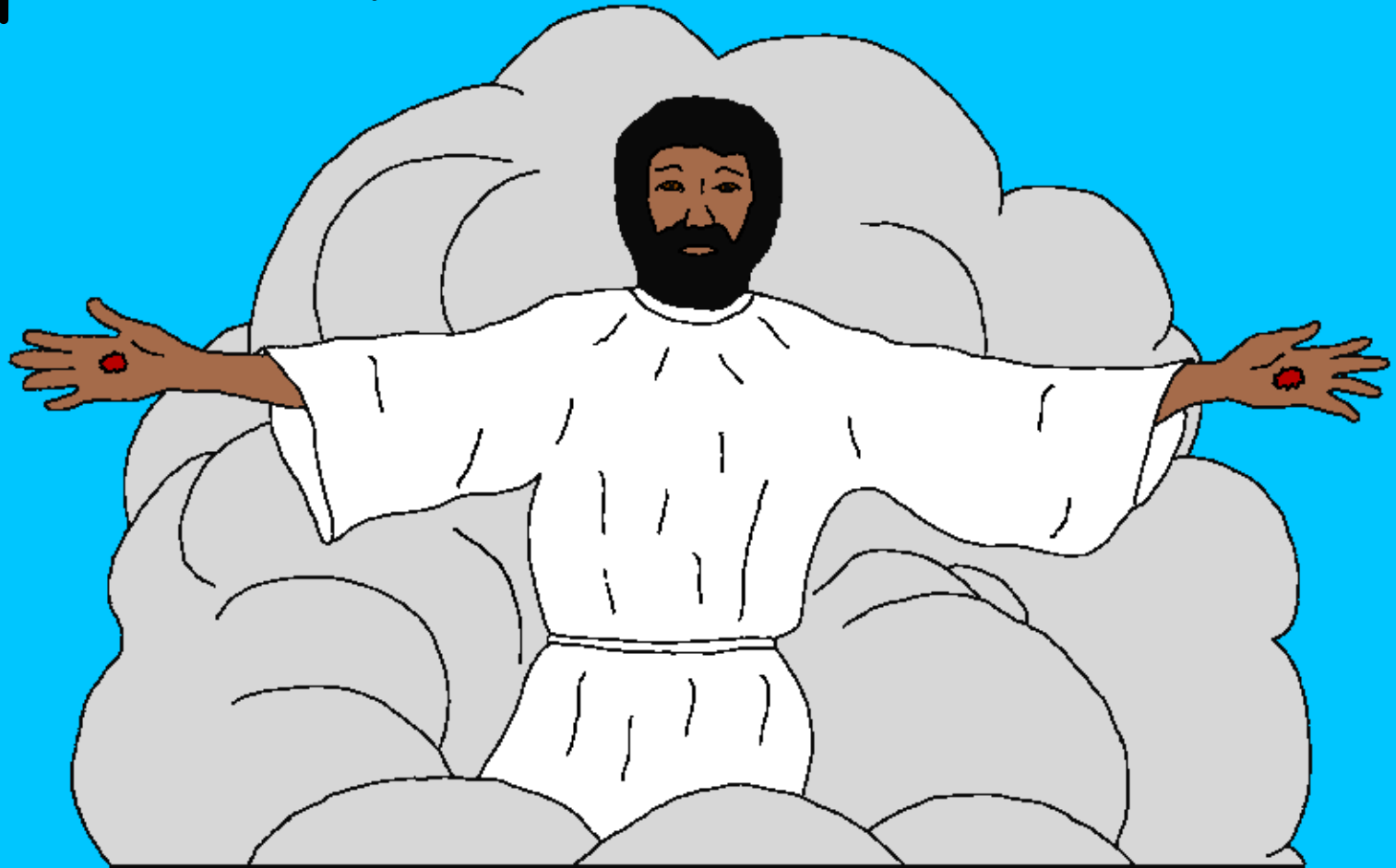
Alekwita "Ng'anda
Yakwatata", elyo
atile kwaba
amamanshoni
ayengi.



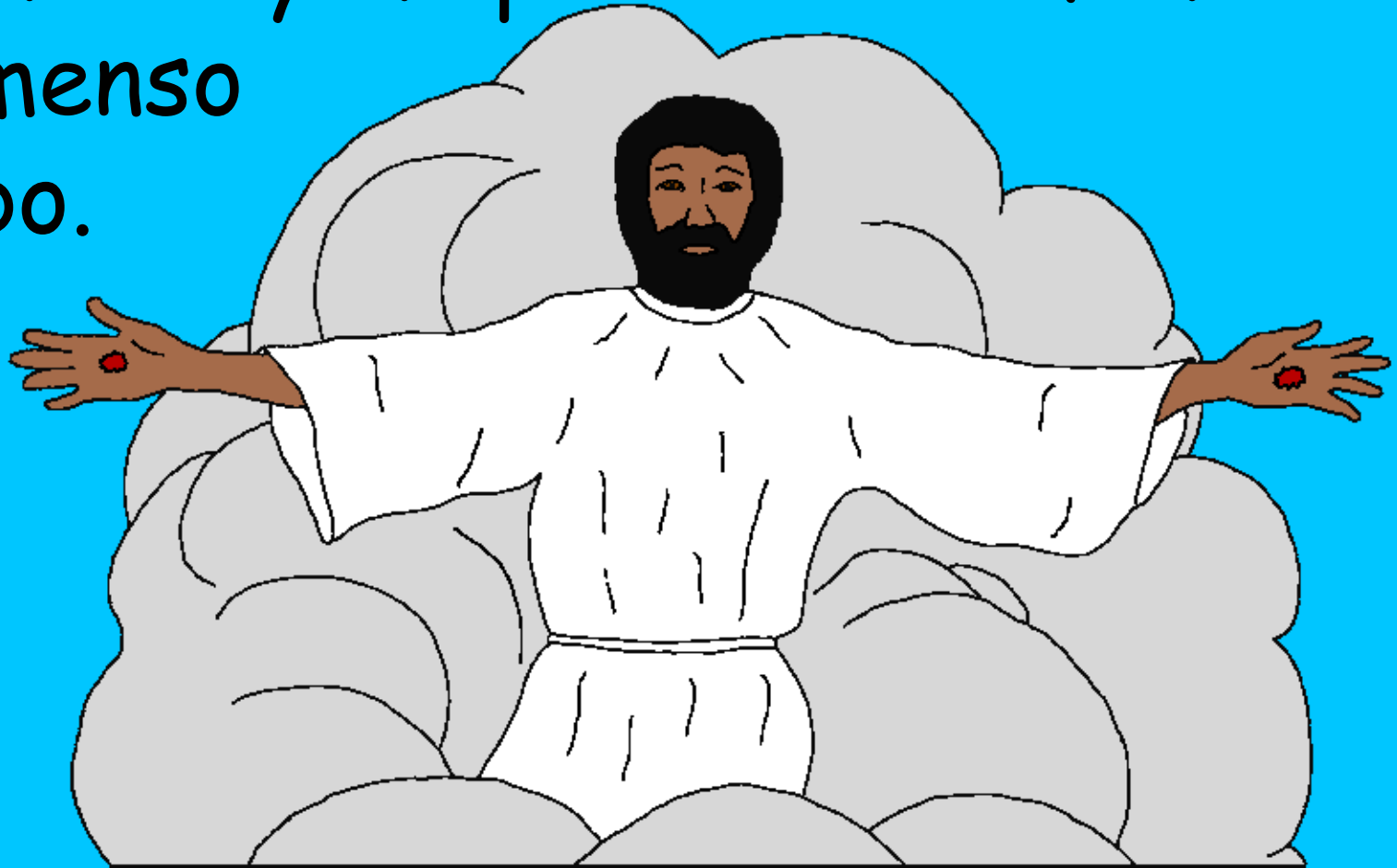
Manshoni ning'anda eyikulu
iyayemba. Kumulu nincende
imo iikalamba kabili
iyayemba nganshi
ukucila ing'anda
iliyonse pacalo.



Yesu atile, "Ndeya mukumipekanisha iyi ncende. Kabili nga namipekanisha iyi ncende, nkabwela ukwisa mupokelela."



Yesu ayile Kumulu, lintu abukile
kubafwa. Uko abasambi baletamba,
Yesu alisendwa ukuya mumulu kabili
ikumbi elyamupokelele ukufuma
kumenso
yabo.



Ukufuma apo, abena kristu
baleibukisha ubulayo bwakwa
Yesu ukutila akabwela
ukwisa basenda.
Yesu atile
akabwelenshita
ilyo abantu
tabeshibe.



UKUSANGWA
NA LESA



Nga cikaba shani kubena kristo
abalefwa ilyo talaisa? Icipingo
citila baya mukuba na Yesu.
Ukufuma mumubili
ekutila ukusangwa
na Lesa.

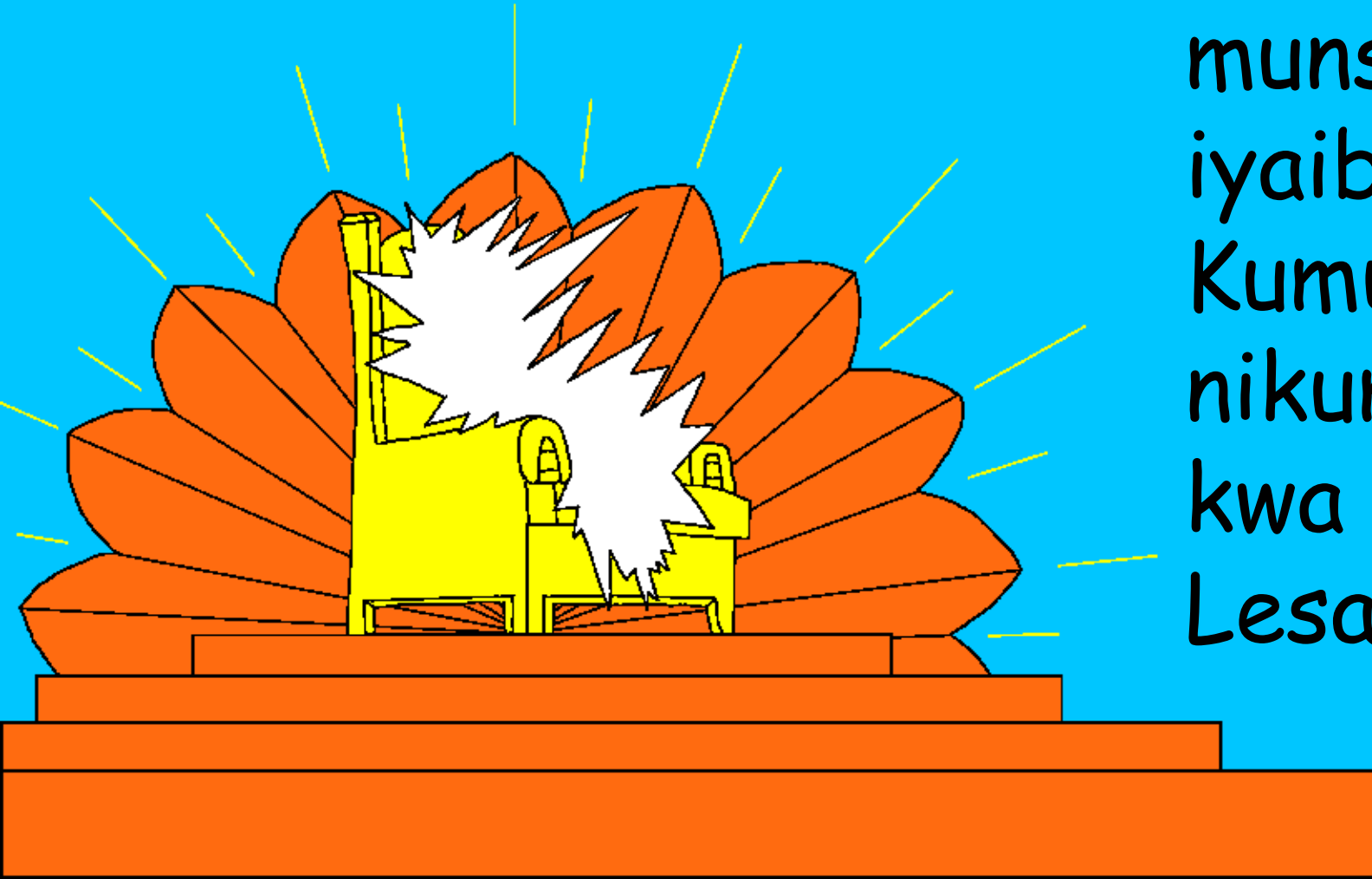


UKUSANGWA
NA LESA

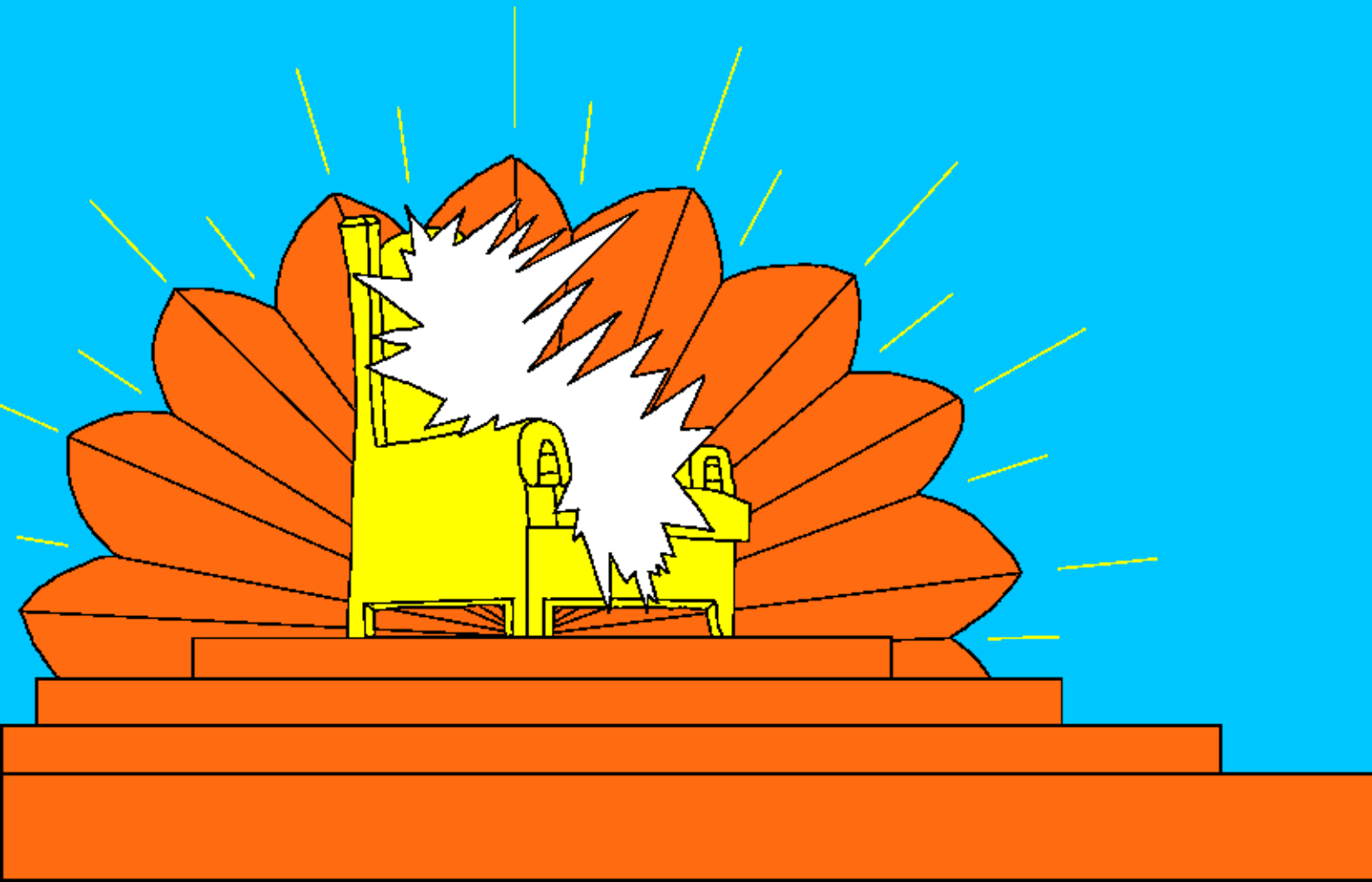


Ukusokolola, ibuku lya kupelesha
mucipingo, litweba ifyo kwayemba
kumulu, icawamisha ukucila cakutla

munshila
iyaibela,
Kumulu
nikumwabo
kwa ba
Lesa.



Lesaba ponse-ponse lelo icipuna cacakwe caba Kumulu.



Abangeli ne filengwa na Lesa fimbi
filamushinshimuna Lesa Kumulu.

Efilecitika na bantu
bakwa Lesa abafwa kabili
baliya kumulu. Balemba

inyimbo
ishaibela
ishaku-
sumbula
Lesa.



Pano pali amashiwi yamo ukufuma
munyimbo bamba:

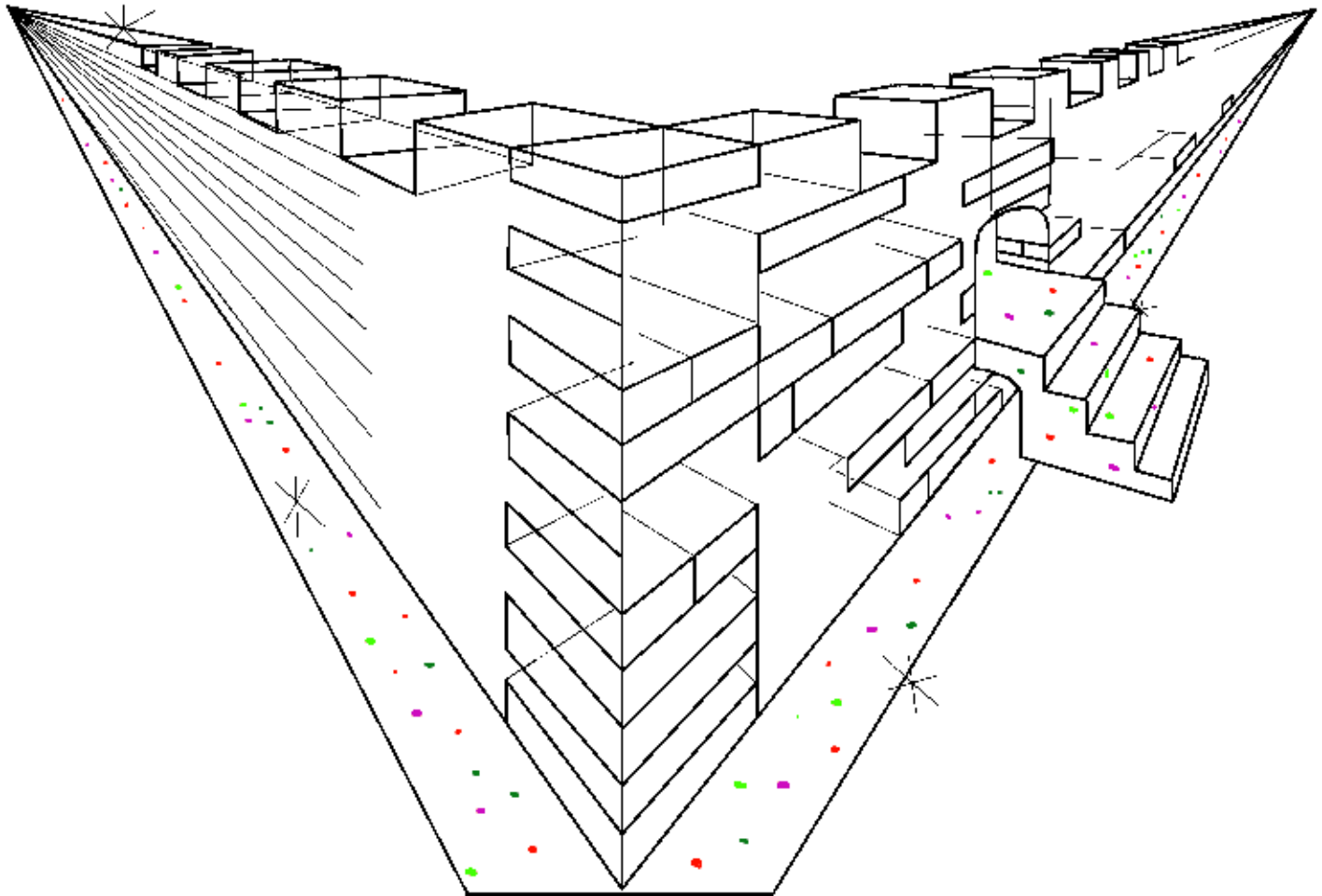
MWALILINGA PANTU
MWALITULUBULWILA
KULI LESA UKUPITILA
MU
MULOPA
WENU ...



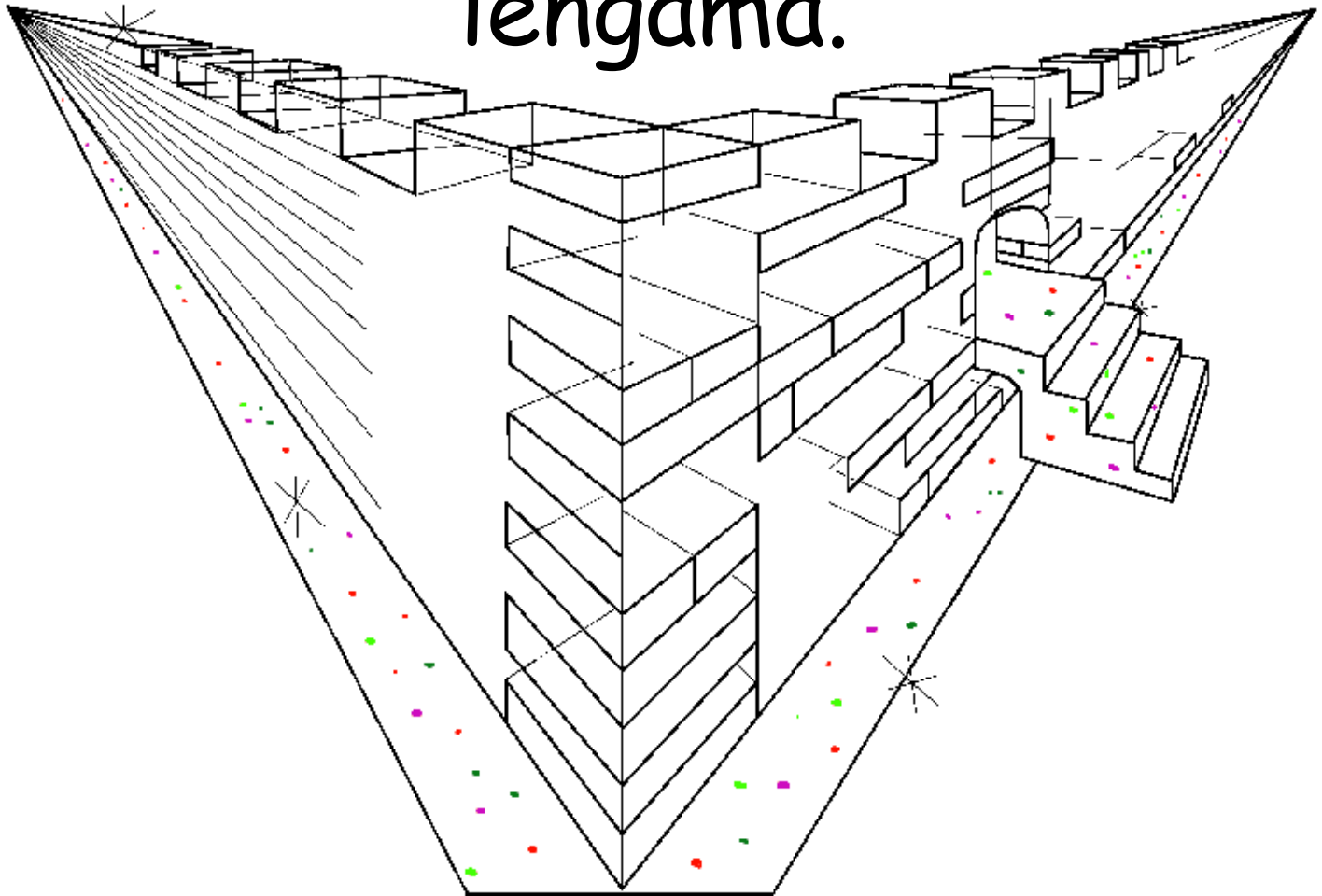
... UKUFUMA MITUNDU NEFYALO
KABILI MWATULENGA
UKUBA INFUMU NA
BAPATILI KULI LESA
WESU. (Ukusokolola
5:9)



Amabula yakumpela mucipingo
yalondolola Kumulu ukuba "Yerusamu
Mupya".



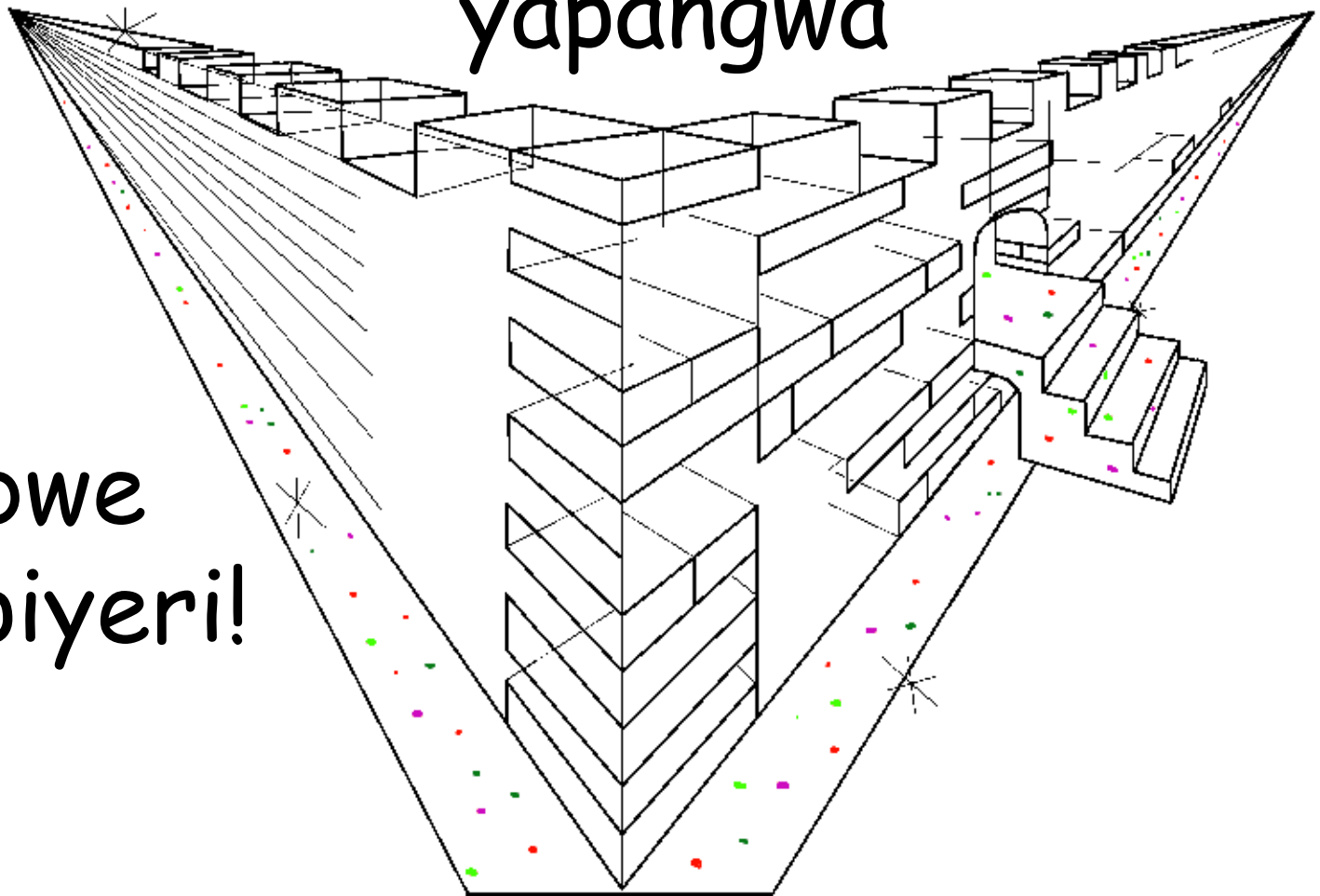
Nincende iyikalamba nganshi
necibumba icitali kunse. Ici cibumba
capangwa ne libwe lya yasipala ilya
lengama.



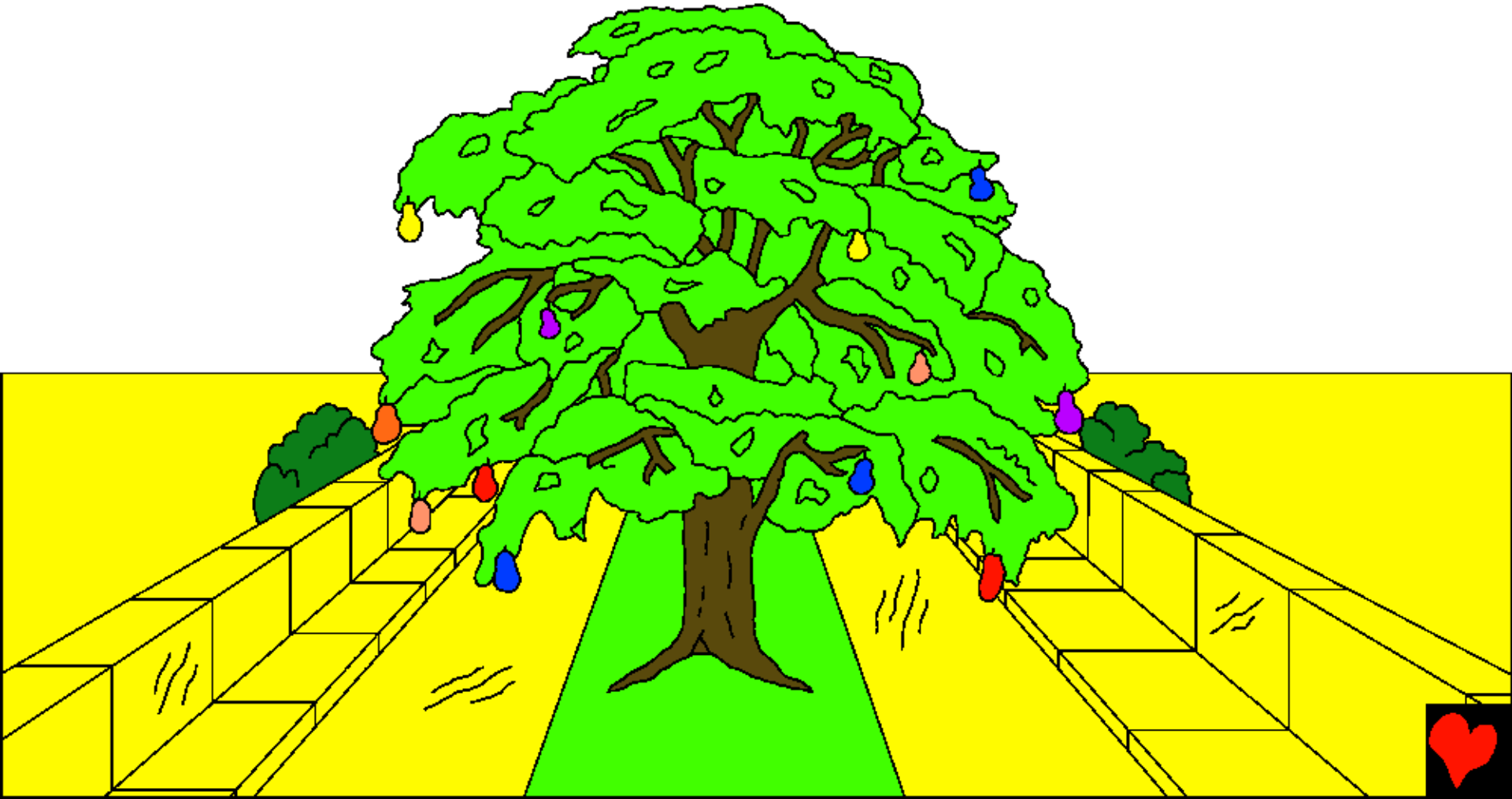
Amabwe ayabengeshima yalitebelela
icibumba kabili yalabengeshima.

Ama geti yakwingilila mumusumba
yapangwa

nelibwe
lya piyeri!



Aya amageti tayasalwa nakalya.
Natwingile tumone mukati... IYEE!
Kumulu mukati emwawamishanapo.



Umusumba wapangwa na golide,
iyalengama nga musukupala ne
UKUFUMA KU nasho shapangwa
na golide.



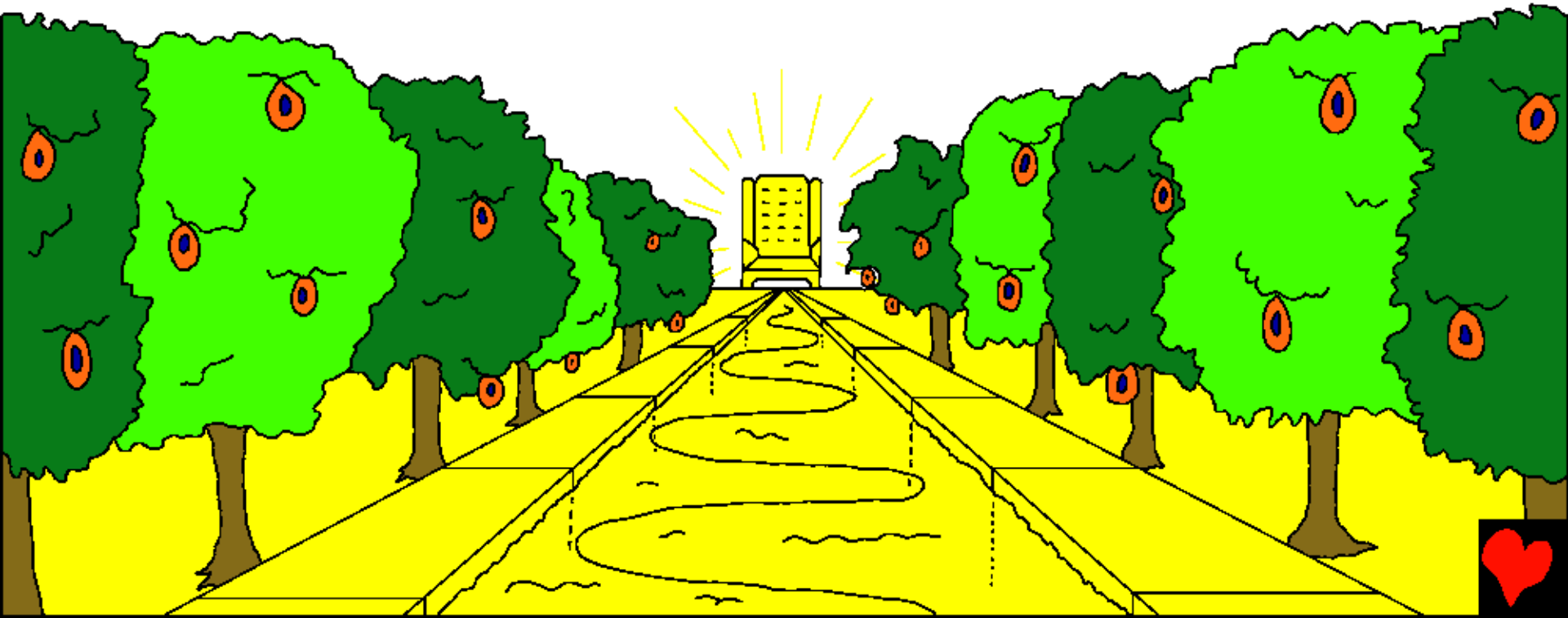
Umumana uwalengama uwamenshi
yamweo wafuma kucipuna cakwa
Lesa icabufumu.



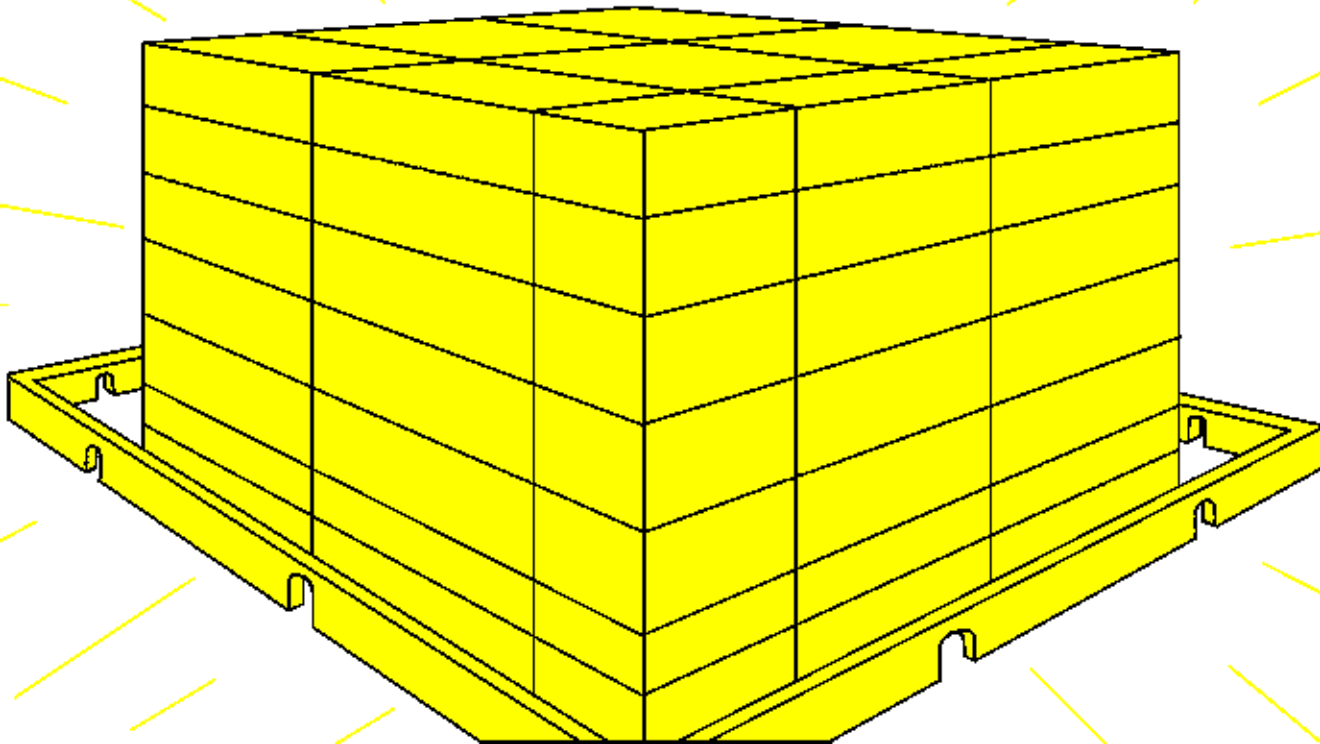
Kabili imbali shonse shibili isha
mumana mwaba icimuti ca mweo ico
pakubala cali mwibala Iya Edeni. Ici
cimuti caliibela.



Cilatwala ifisabo ifyapusana-pusana
ikumi na fibili cilamweshi ifisabo
fyauko. Kabili amabula yacimuti ca
mweo yakuposha ifyalo.



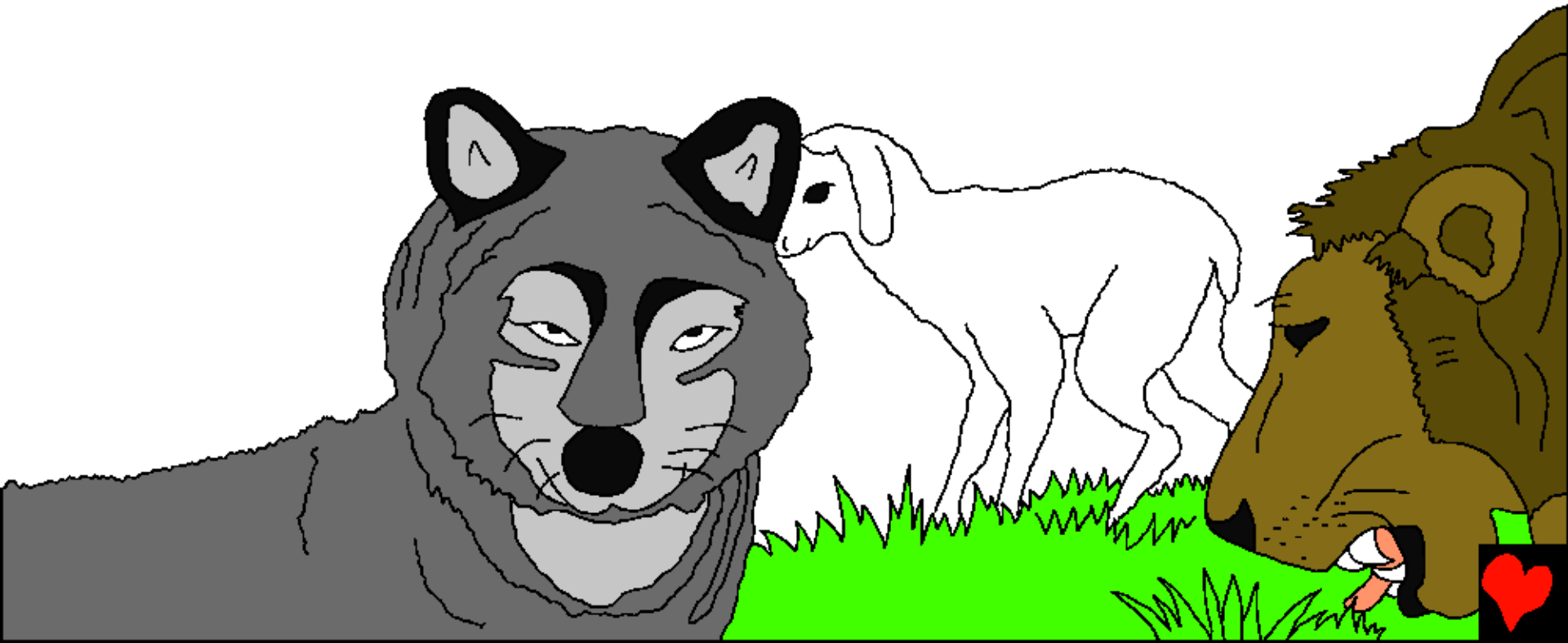
Kumulu takukabila akasuba nangula
umweshi ukupela ulubuto. Ubukata
bwakwa Lesa umwine ebwisulamo
nokupela ulubuto. Takwabapo
ubushiku kwena.



Ne nama kumulu shalipusanako.
Shintu shatekwa kabili fyabafye
ifibusa. Chibuli notwana twa mpanga
filila pamo ifyani, inkalamu nasho
shilya pamo ne ng'ombe.



Ilyo Mfumu iletila, "tafyakacene nangula ukonaula mulupili lwandi ulwa shila."



Ilyo tulelolesha tulemona ifintu kushaba
kumulu. Takumfwikako amashiwi
yabukali.
Takwaba
uwalubuli
nangula
umutani.



Takwaba amaloko pafibi pantu
takwaba ba sakala kumulu.



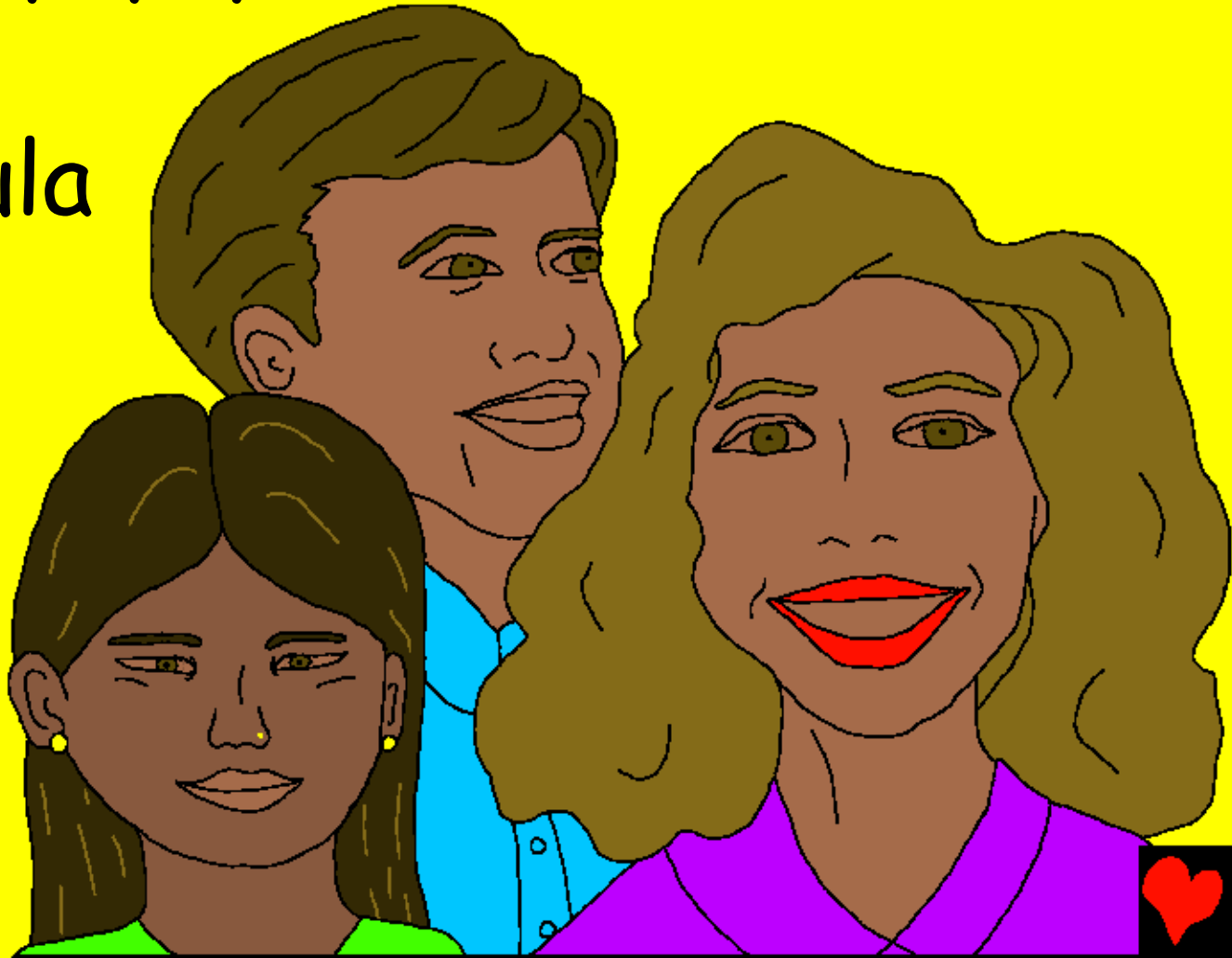
Takwaba ababufi, abepaya, abaloshi
nangula ama bembu. Takwaba
ulubembu
ululilonse
Kumulu.



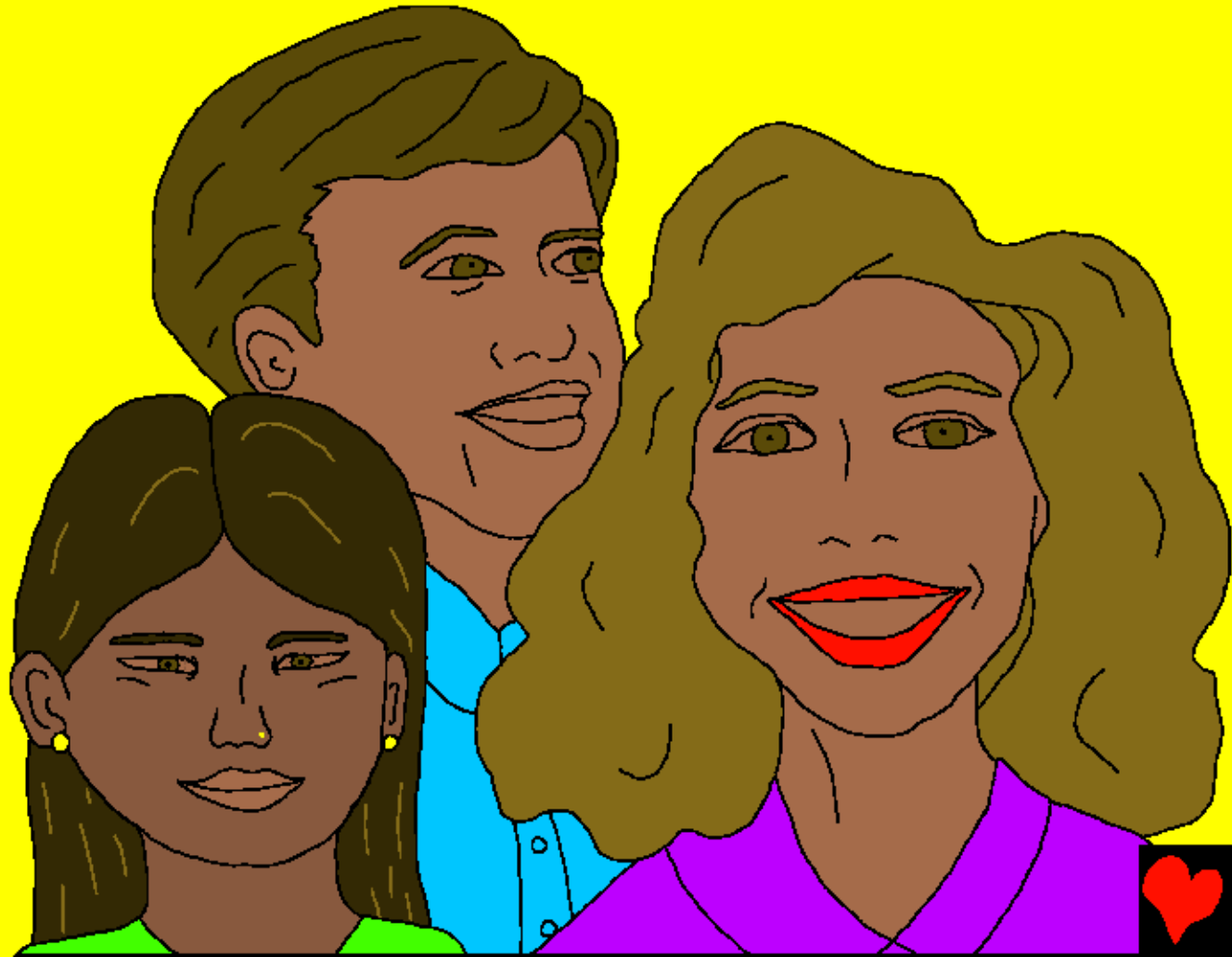
Kumulu na Lesa
takwaba ifilamba.
Inshita shimo
abantu bakwa Lesa
balalila kumulandu
wa cikonko pano
isonde, Kumulu
Lesa akapukuta
ifilamba fyonse.



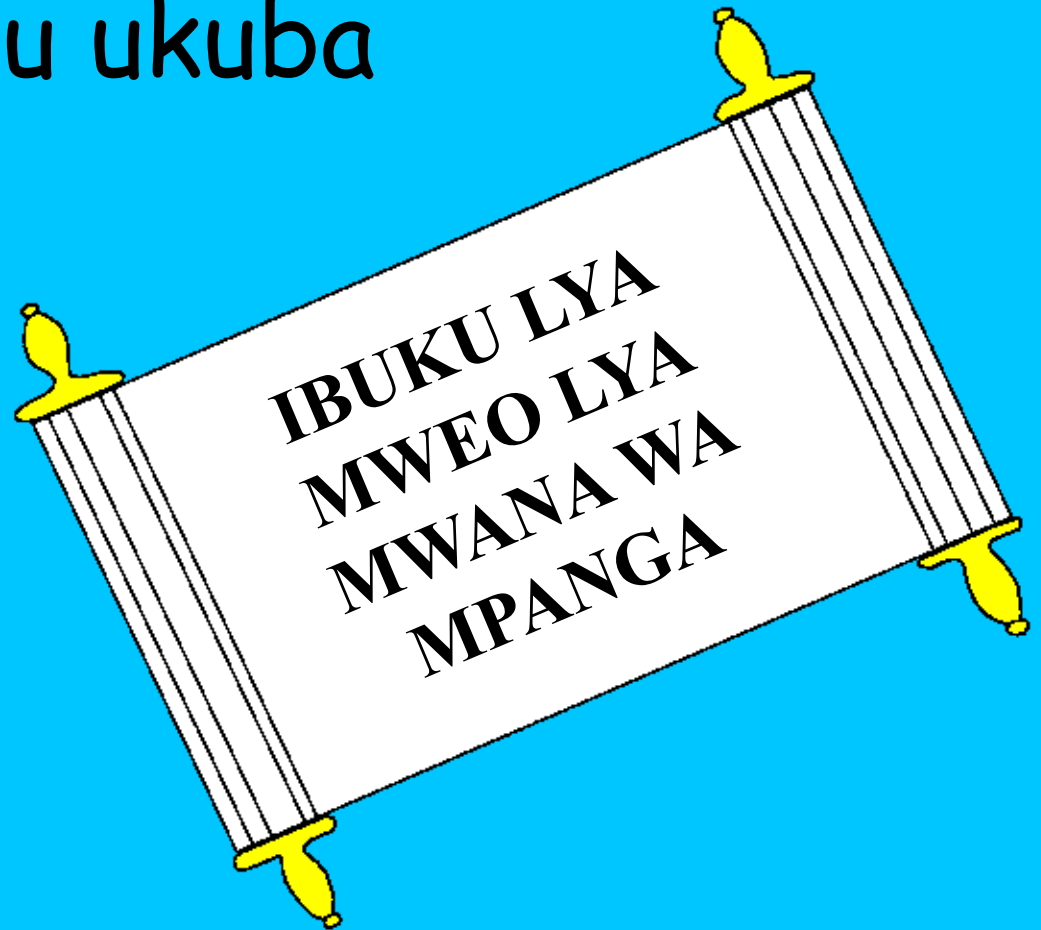
Takwaba imfwa kumulu nakalya.
Abantu bakwa Lesa bakaba ne
Mfumu umuyayaya. Takwaba
icikonko,
ukulila nagula
ukukalipwa.



Takwaba amalwele, ukulekana
nangula ifililo. Uuli onse abafye
uwatemwa
umuyayaya
na Lesa
Kumulu.

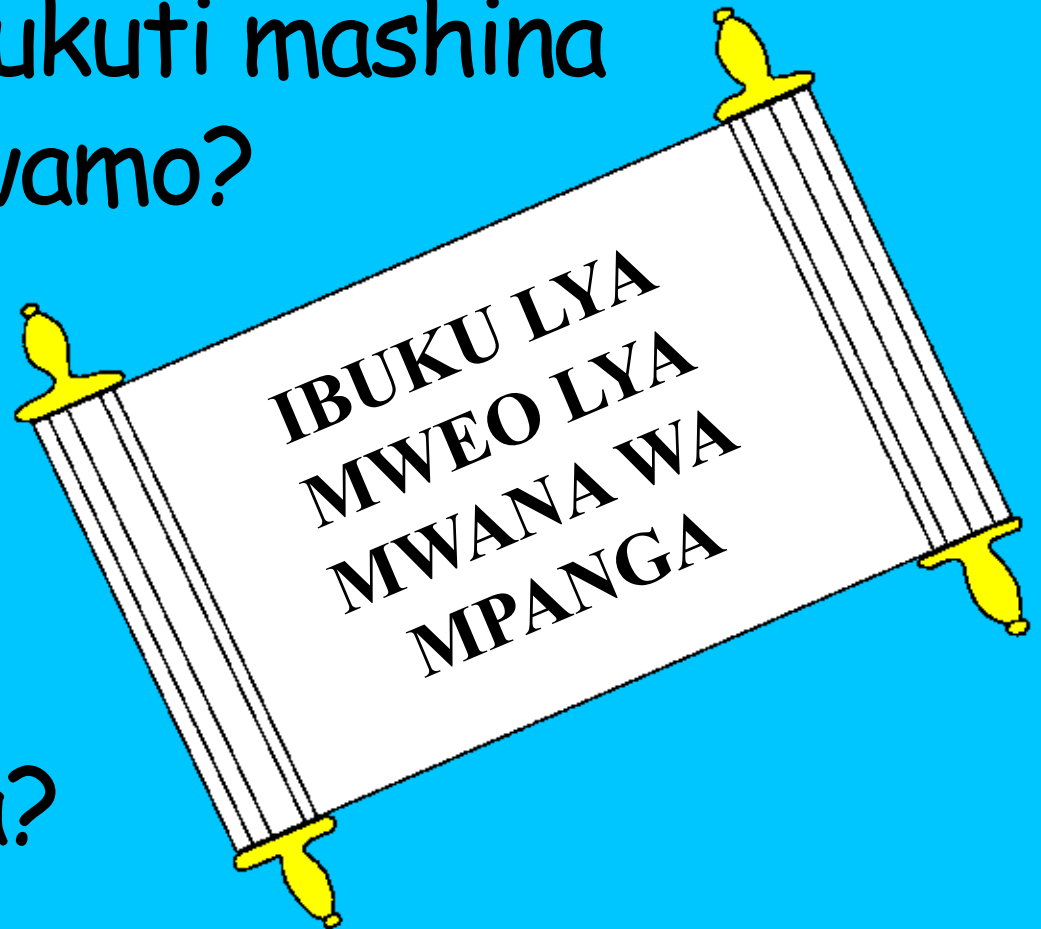


Icawamisha ukucila cakuti Kumulu
kwa balumendo na bakashana
(nabakulu fye) abasubila
pali Yesu Kristu ukuba
umupusushi
wabo kabili
ukumumfwa
ngeMfumu
yabo.



Kumulu kwaliba ibuku ilitwa ukutla
ibuku lya mweo ilya mwana wa mpanga.
Lyalisula namashina ya bantu. Bushe
kuti mwaishiba ukuti mashina
yabani ya lembwamo?

Bonse
abacetekela
mulu Yesu.
Bushe ishina
lyobe emo lyaba?



Amashiwi yakusondwelela
mucipingo bwite. "Kabili Mupashi na
shibwinga baleti Iseni, 'Iseni!' Kabili
nowaumfwa atile 'Iseni!'"



Elyo uuli ne cilaka ese kabili na
ulefwaya onse, anwe amenshi ya
bumi ayafye."



Kumulu, kung'anda yakwa Lesa

Ilyashi ukufumina mu cebo cakwa Lesa,
Icipingo,

isangwa mu

Yohane 14; 2 Abena Korinto 5;
Ubusokoloshi 4, 21, 22

"Pakwingila pa cebo cenu cipela ulubuto."
Amalumbo 119:130



Impela



Ili lyashi lya mucipingo litweba pali
Lesa wesu uwatubumbile kabili afwaya
ukutilati mumwishibe.

Lesa alishiba twalicyita ifintu ifibi, eflyo eta
ulubembu. Ukupanikwa kwa lubembu ni mfwa,
lelo Lesa alimitemwa sana alitumine umwana
wakwe eka, Yesu, ukufwa palupanda no
kupanikwa pa lubembu lwenu. Yesu alibuka
nokuya kumwabo Kumulu. Nga mwasubila muli
Yesu nokumulomba ukuti amyelele imembu
shenu, amyelele! Kabili alaisaikala muli imwe
ililine, kabili mukekala nankwe umuyayaya.



Nga mwasubila ukutla ici
ecishinka, soseni amashiwi aya kuli Lesa:
Mwemutemwikwa Yesu, nasubila ukutla
nimwe Lesa, lelo mwasangwike umuntu
ukutla mumfwile imembu shandi, pali lelo
muli abami. Ingileni mumweo wandi
nokwelela imembu shandi ukutla mbe no
bumi bupya, kabili bushiku bumo nkabe
nenu umuyayaya. Ngafweni ukumyumfwila
nokwikalila imwe nga mwana wenu. Amen.

Belengeni Icipingo no kulanda na Lesa cila
bushiku! Yohane 3:16

