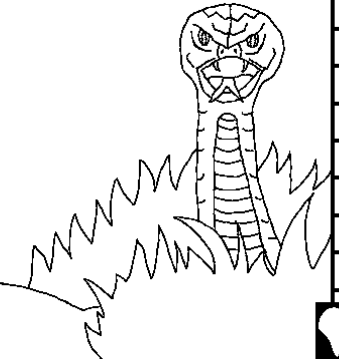


Ukutendeka kwa bulanda bwa muntu
Ilyashi ukufumina mu cebo cakwa Lesa,
Icipingo,
isangwa mu
Ukutendeka 3-6

"Pakwingila pa cebo cenu cipela ulubuto."
Amalumbo 119:130

Ukutendeka kwa bulanda bwa muntu



Calilembwa na Edward Hughes
Uwalangilische Byron Unger; Lazarus

Abapilibwile Phiri Williams
Yasendwa na M. Maillot; Tammy S.

Ilyashi 2 ya ishili 60

M1914.org

Bible for Children, PO Box 3, Winnipeg MB R3C 2G1 Canada

Kupoke nsambu: Mwalikwata nsambu uku senda no ku printa ilyashi ili,
cikulu mwikashitisha.

Lesa alishiba twalicita ifintu ifibi, eflyo eta
ulubembu. Ukupanikwa kwa lubembu ni mfwa.

Lesa alitutemwa nganshi alitumine umwana wakwe
eka, Yesu, ukufwila palupanda nokulipila ukupanikwa
kwesu. **Yesu alibuka nakabili** alibwekela Kumulu!
Eico Lesa kuti atwelela imembu shesu.

Nga mulekabila ukufuma kumembu shenu, soseni ifi
kuli Lesa: Mwe Lesa, nasubila Yesu afwilile ine
kabili alimumi palilelo. Ingileni mumweo wandi no
kwelela imembu shandi, ukuti mbe nobumi ubupya
kabili nkabe nenu umuyayaya. Ngafweni ukwikalila
imwe ngo mwana wenu. Amen. Yohane 3:16

Belengeni icipingo no kulanda na Lesa cila bushiku!

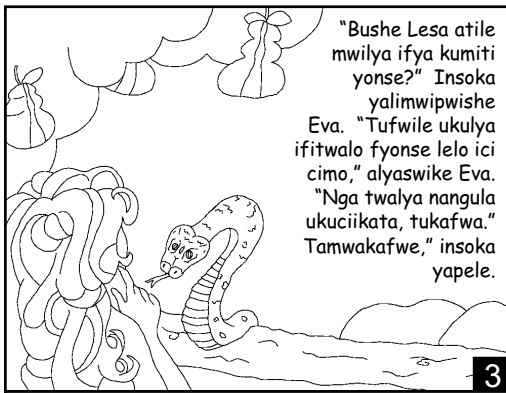
Bemba

LESA EWABUMBILE
FYONSE! Lintu Lesa abumbile
muntu wakubala, aikele mwibala
Iya Eden no mwina mwakwe Eva.



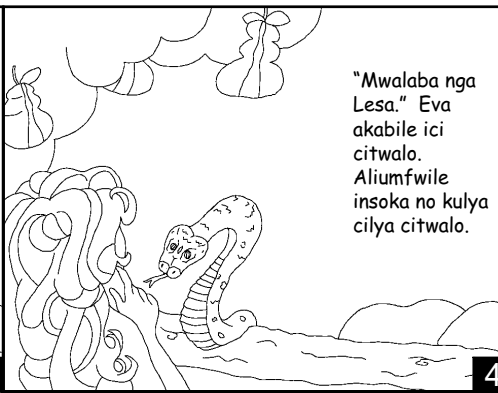
Bali abasansamuka ukumfwila
Lesa nokwenda muceni cakwa
Lesa mpaka ubushiku bumo ...





"Bushe Lesa atile mwilya ifya kumiti yonse?" Insoka yalimwipwishe Eva. "Tufwile ukulya ifitwalo fyonse lelo ici cimo," alyaswike Eva. "Nga twalya nangula ukuciikata, tukafwa." Tamwakafwe," insoka yapele.

3



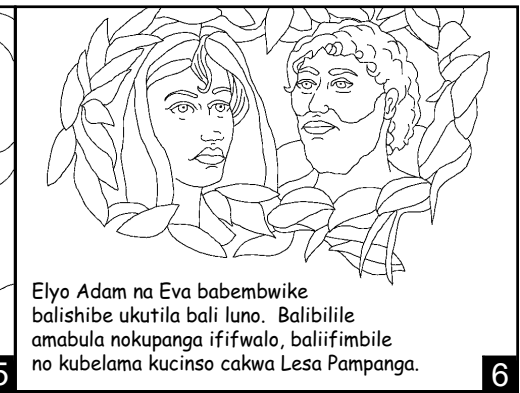
"Mwalaba nga Lesa." Eva akabile ici citwalo. Aliumfwile insoka no kulya cilya citwalo.

4



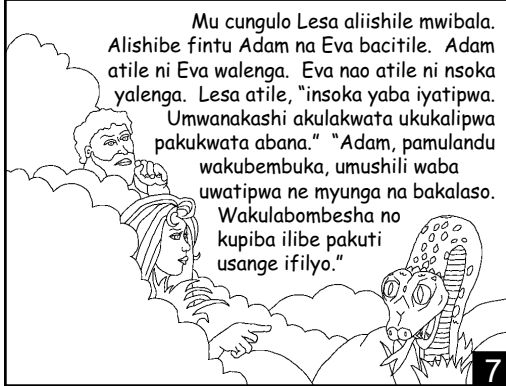
Panuma yakukana umfwila Lesa Eva alitungilila umwina mwakwe Adam ukuti alye cilya citwalo. Nao Adam alingile ukutula, "Iyo! Ine teti nkane ukumfwila icebo cakwa Lesa."

5



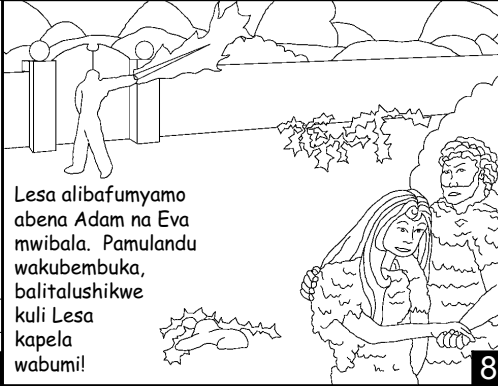
Elyo Adam na Eva babembwike balishibe ukutula bali luno. Balibilile amabula nokupanga ififwalo, baliifimbile no kubelama kucinso cakwa Lesa Pampanga.

6



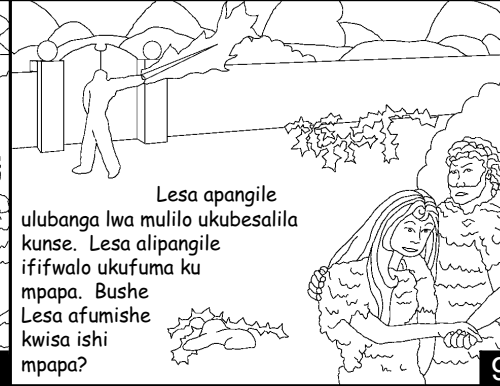
Mu cungulo Lesa aliishile mwibala. Alishibe fintu Adam na Eva bacitile. Adam atile ni Eva walenga. Eva nao atile ni nsoka yalenga. Lesa atile, "insoka yaba iyatipwa. Umwanakashi akulakwata ukukalipwa pakukwata abana." "Adam, pamulandu wakubembuka, umushili waba uwatipwa ne myunga na bakalaso. Wakulabombesha no kupiba ilibe pakuti usange ifilyo."

7



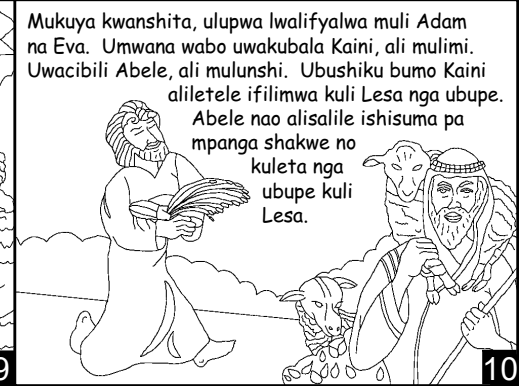
Lesa alibafumyamo abena Adam na Eva mwibala. Pamulandu wakubembuka, balitalushikwe kuli Lesa kapela wabumi!

8



Lesa apangile ulubanga lwa mulilo ukubesalila kunse. Lesa alipangile ififwalo ukufuma ku mpapa. Bushe Lesa afumishe kwisa ishi mpapa?

9



Mukuya kwanshita, ulupwa lwalifyalwa muli Adam na Eva. Umwana wabo uwakubala Kaini, ali mulimi. Uwacibili Abele, ali mulunshi. Ubushiku bumo Kaini aliletele ifilimwa kuli Lesa nga ubupe. Abele nao alisalile ishisuma pa mpanga shakwe no kuleta nga ubupe kuli Lesa.

10



Lesa tatemwe no pupe bwakwa Kaini. Kaini aliifulwe nganshi. Lelo Lesa atile, "Bushe nga ulecita ifyalinga, tekuti wasuminwa?"

11



Kaini ukufulwa takwafumine. Elyo papitile inshita, Kaini aliikete Abele no kumwipaya kumabala!

12



Lesa aipwishe Kaini. "Abele mwaice obe, alikwi?" "Nshishibe," alibepele Kaini. "Bushe nine kasunga wamwaice wandi?" Lesa alipanike Kaini pakupoka amaka yakulima no kumupanga ciseya.

13



Kaini alifuma pacinso ca Mfumu no kuya upa umwana wakwa Adam na Eva. Bali panga ulupwa. Mukwai abana na beshikulu balifulile mumusumba untu Kaini aile kula.

14



Pali iyi nshita ekuti ulupwa lwa kwa Adam na Eva lulekula mukwangufyanya. Muli shilya nshiku abantu baleikalishapo ukucila lelo.

15



Lintu umwana wakwe Seti afyelwe, Eva atile, "Lesa abwekeshapo Seti pali Abele." Seti ali muntu wakwa Lesa uwaikele imyaka 912 kabili alikwete abana abengi.

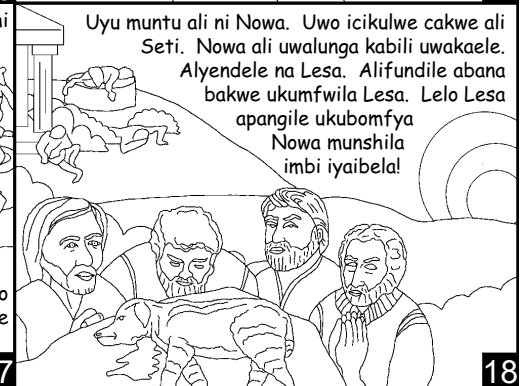
16



Pe sonde abantu balelundapofye ubulumushi nga ifyo imikowa yalekonkana. Pampela, Lesa atontokenye ukonaula abantu bonse inama shonse ne fyuni. Lesa alyumfwile ubulanda ukuti alibumbile umuntu. Lelo umuntu

umo ewaumfwishe bwino Lesa ...

17



Uyu muntu ali ni Nowa. Uwo icikulwe cakwe ali Seti. Nowa ali uwalunga kabili uwakaele. Alyendele na Lesa. Alifundile abana bakwe ukumfwila Lesa. Lelo Lesa apangile ukubomfya Nowa munshila imbi iyaibela!

18