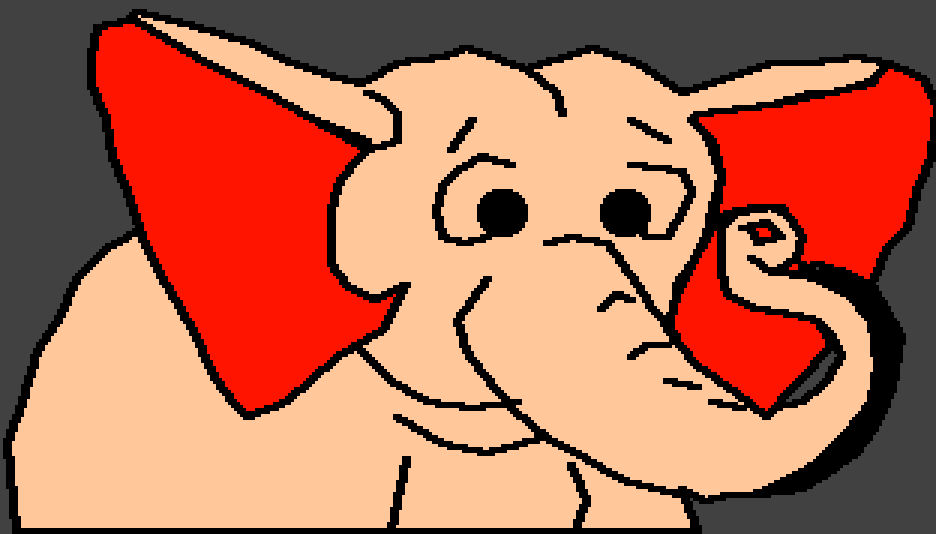


Icipingo icabana
Camiletela

Lintu Lesa Apangile
Fyonse



Calilembwa na: Edward Hughes

Uwalangilishe: Byron Unger; Lazarus

Yasendwa na: Bob Davies; Tammy S.

Abapilibwile: Phiri Williams

Icapangwa na: Bible for Children
www.M1914.org

©2016 Bible for Children, Inc.

Kupoke nsambu: Mwalikwata nsambu uku senda
no ku printa ilyashi ili, cikulu mwikashitisha.



Ninani watupangile? Icipingo, ishiwi
Iya kwa Lesa, ilanda ifyo abantu
batendeke.



Akale Lesa apangile umuntu
wakubalilapo no kumwinika ishina
Iya kuti Adam.

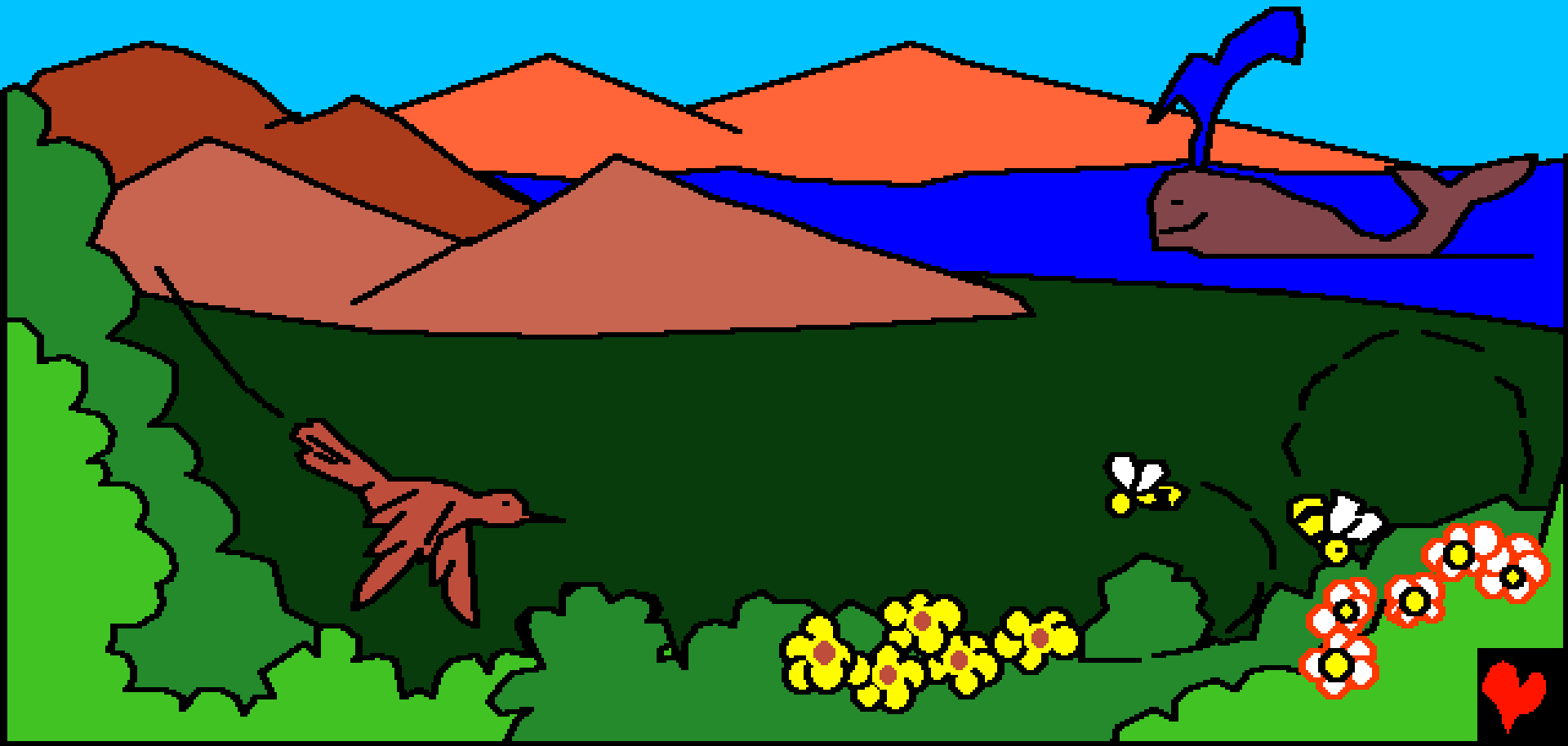


Lesa abumbile Adam ukufuma kwi
loba. Lintu Lesa aputilemo umweo
muli Adam alisaba umumi.

Aisangile mwibala
ilyaleitwa
Eden.



Apo talapanga Adam, Lesa apangile
icalo no kubikamo ifintu ifisuma
nganshi.

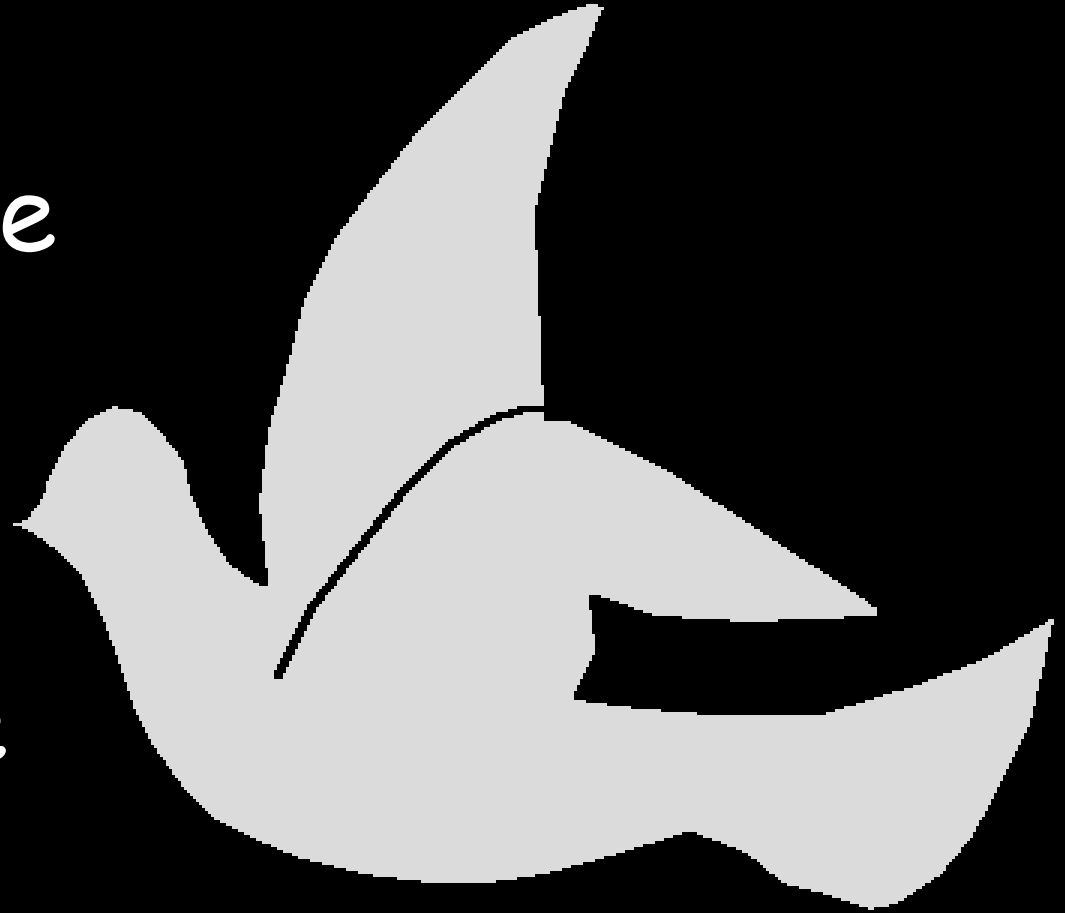


Panono panono Lesa abumbile impili,
ne bemba, amaluba ne miti. Ifyuni
ne nshimu, Ifisabi ifikulu, ne fikono.
Mucishinka, Lesa apangile

fyonse ifyabako-
fyonse fye.

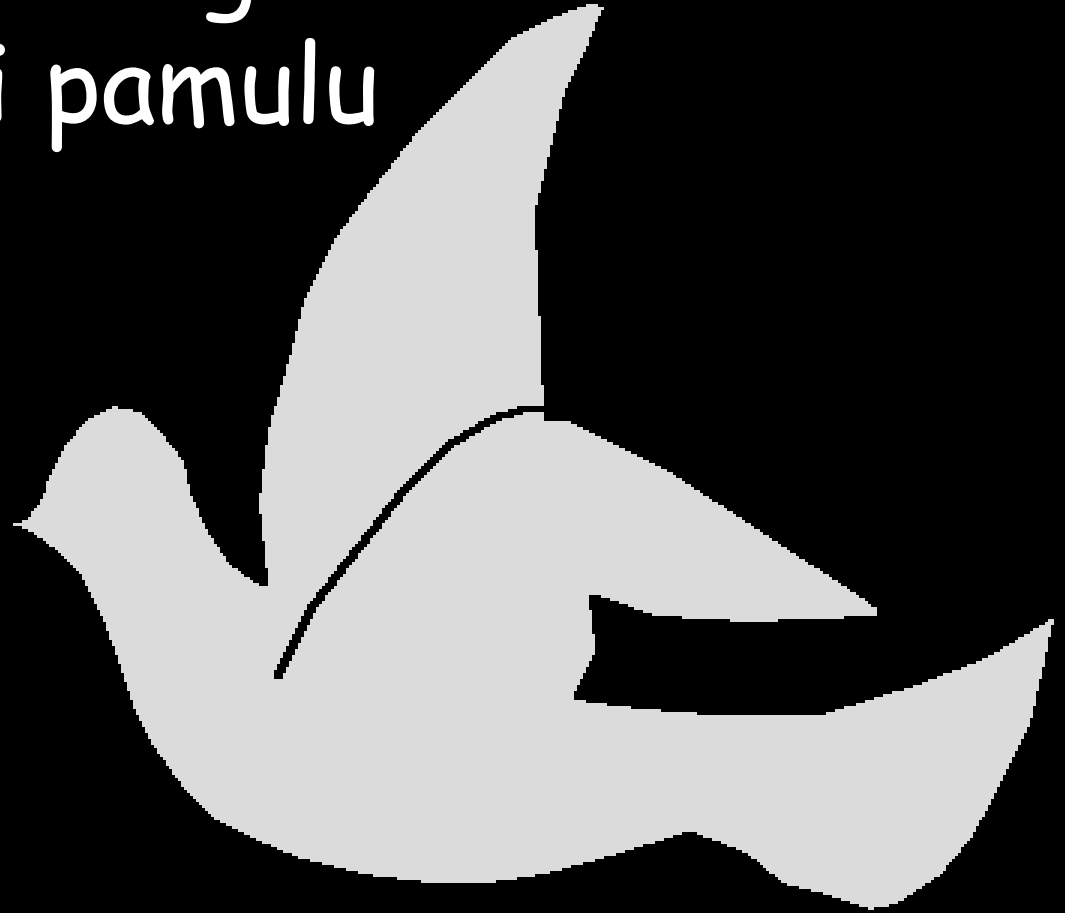


Mukutendeka
elyo Lesa talati
apange iciliconse
takwali kantu
ukupatulako
Lesa. Takwali
abantu, incende
nangula ifintu
fimbi.



Takwali ulubuto nangula
imfimfi, takwali pamulu
nangula panshi.

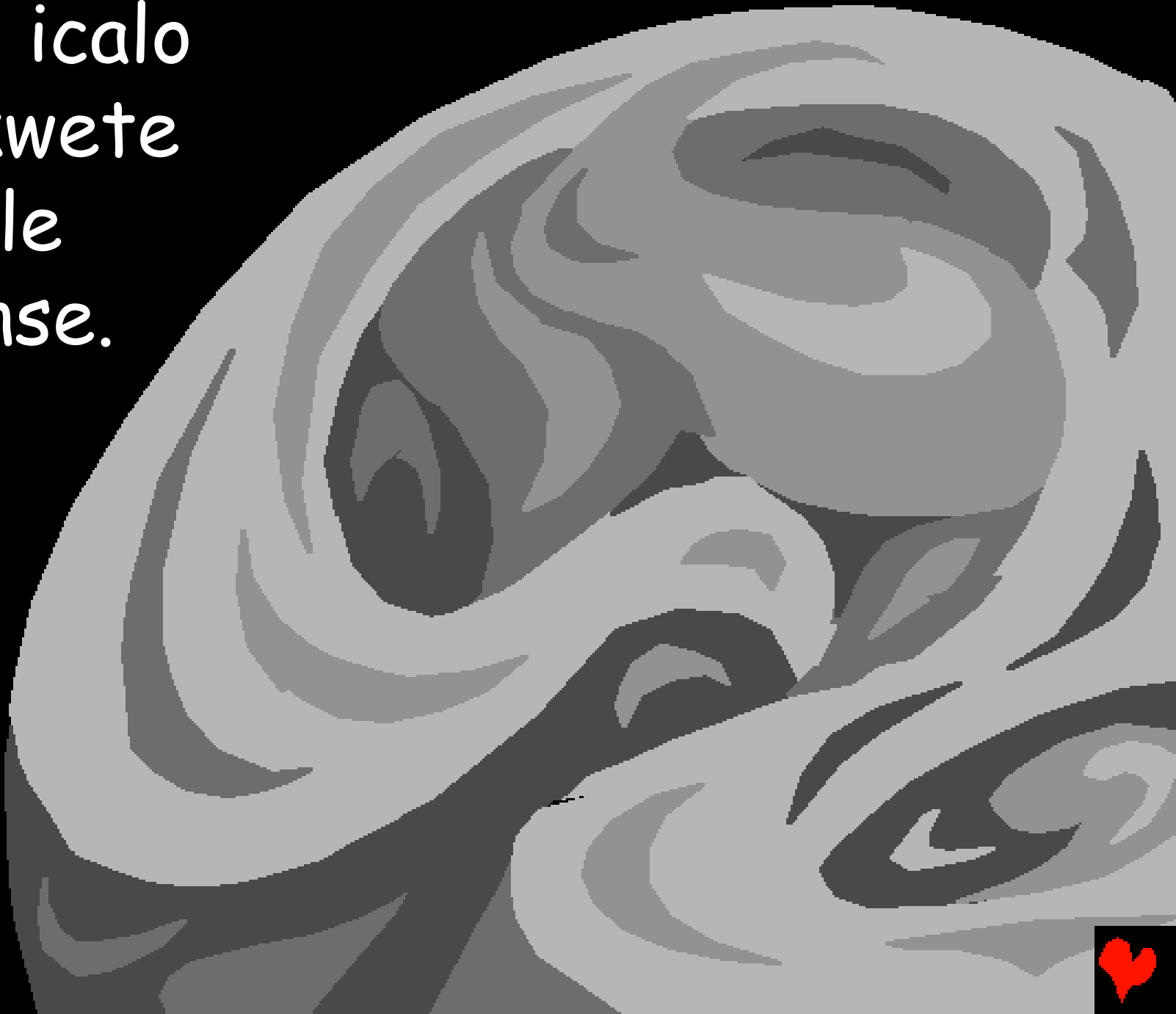
Takwali mailo
nangula ilelo
kwalifye
Lesa ekafye
uushakwata
ntendekelo. Lesa
acitilepo fimo!



Pakutendeka,
Lesa abumbile imyulu
ne sonde.



Kabili icalo
tacakwete
imibele
iiliyonse.

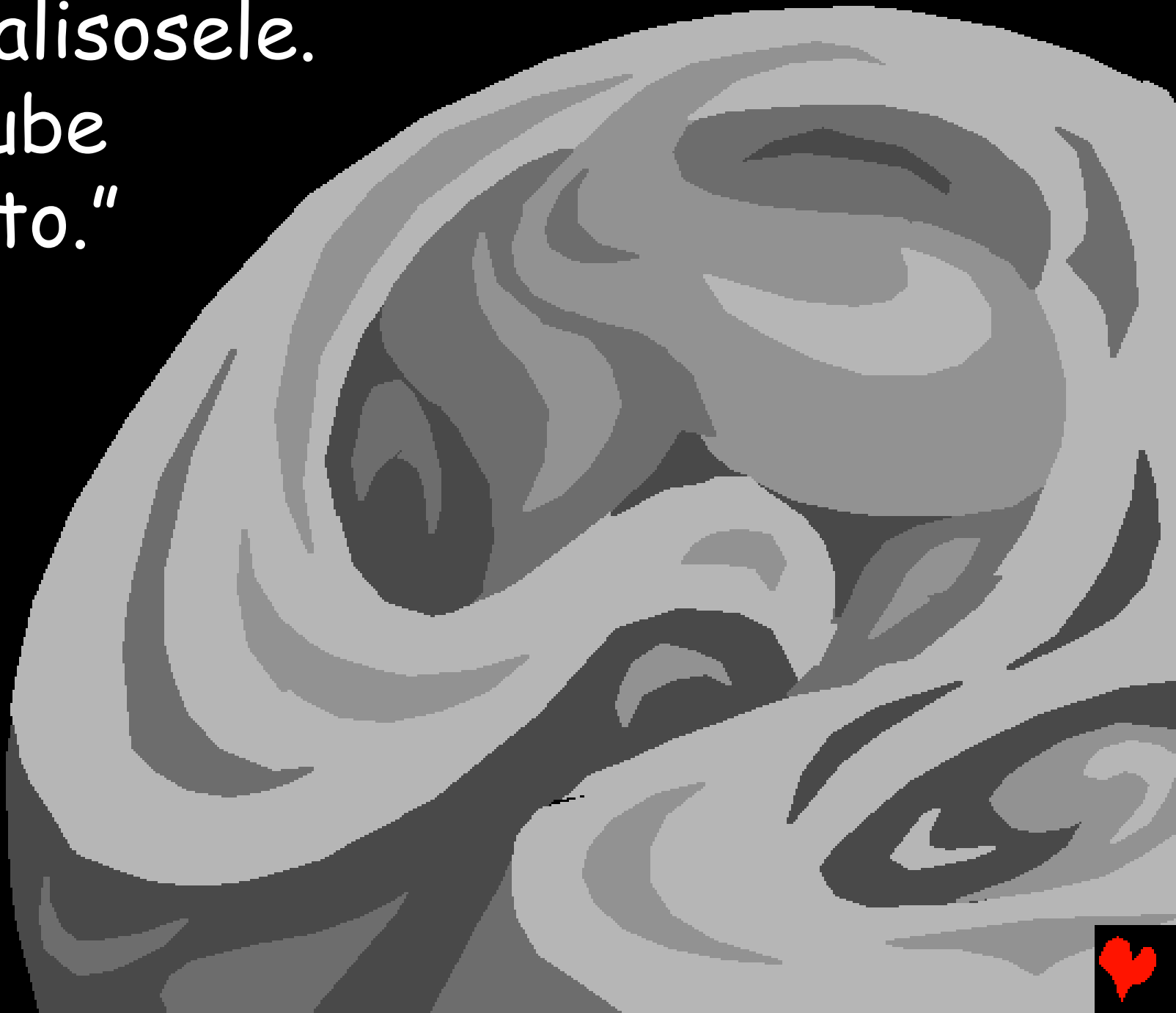


Kabili infimfi
yali tebelele
icalo
conse.

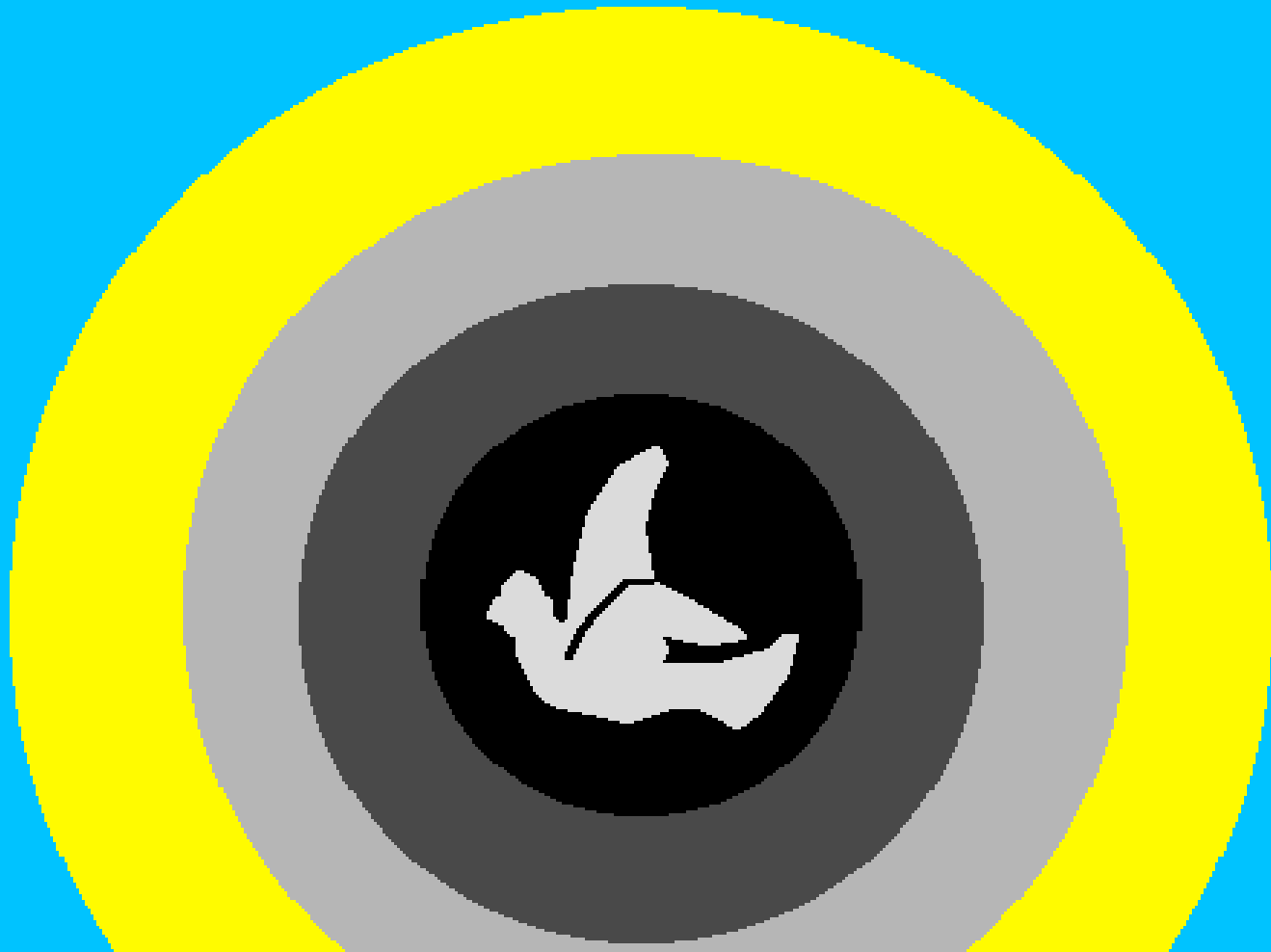


Lesā alisosele.

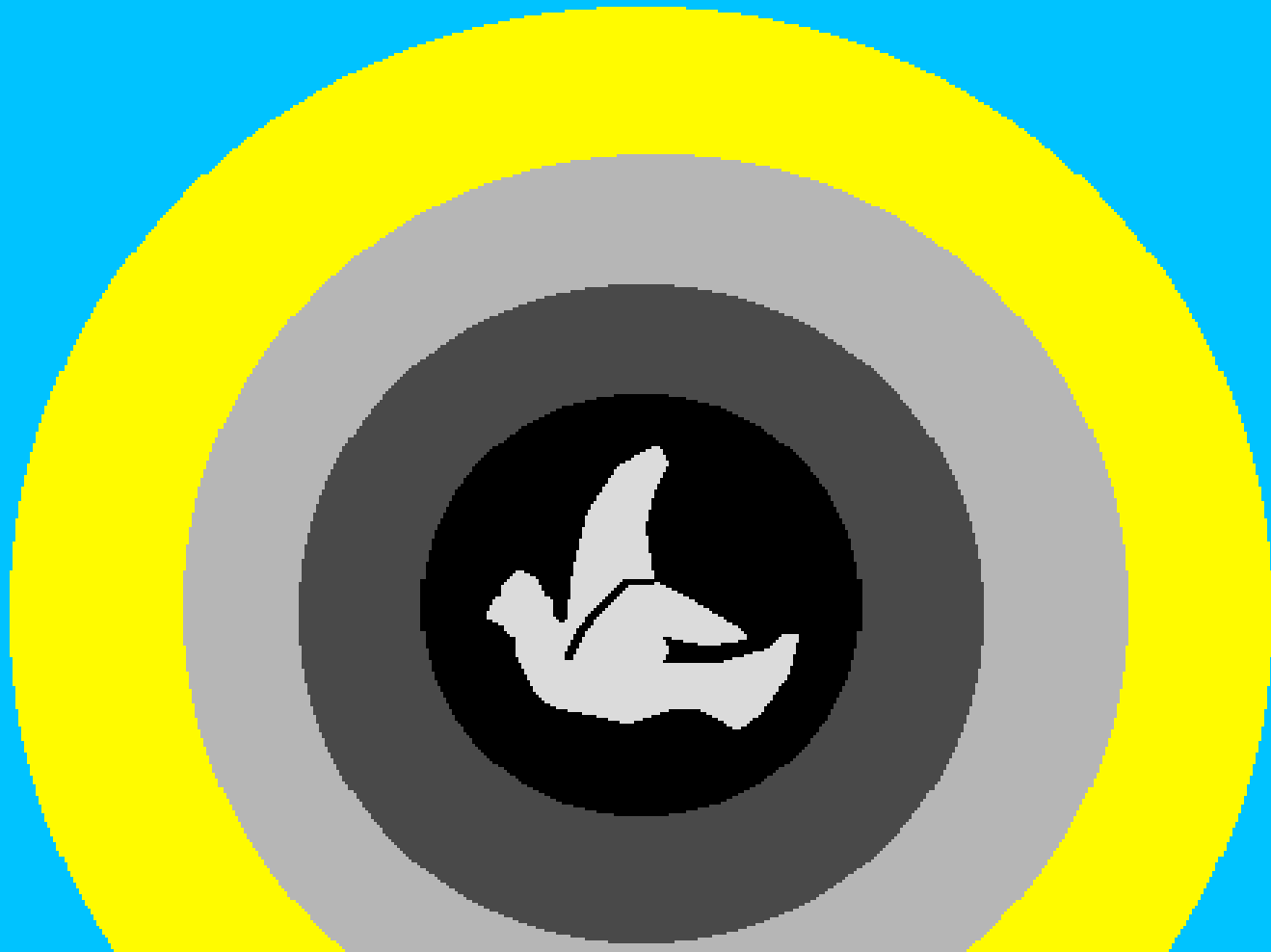
“Nakube
ulubuto.”



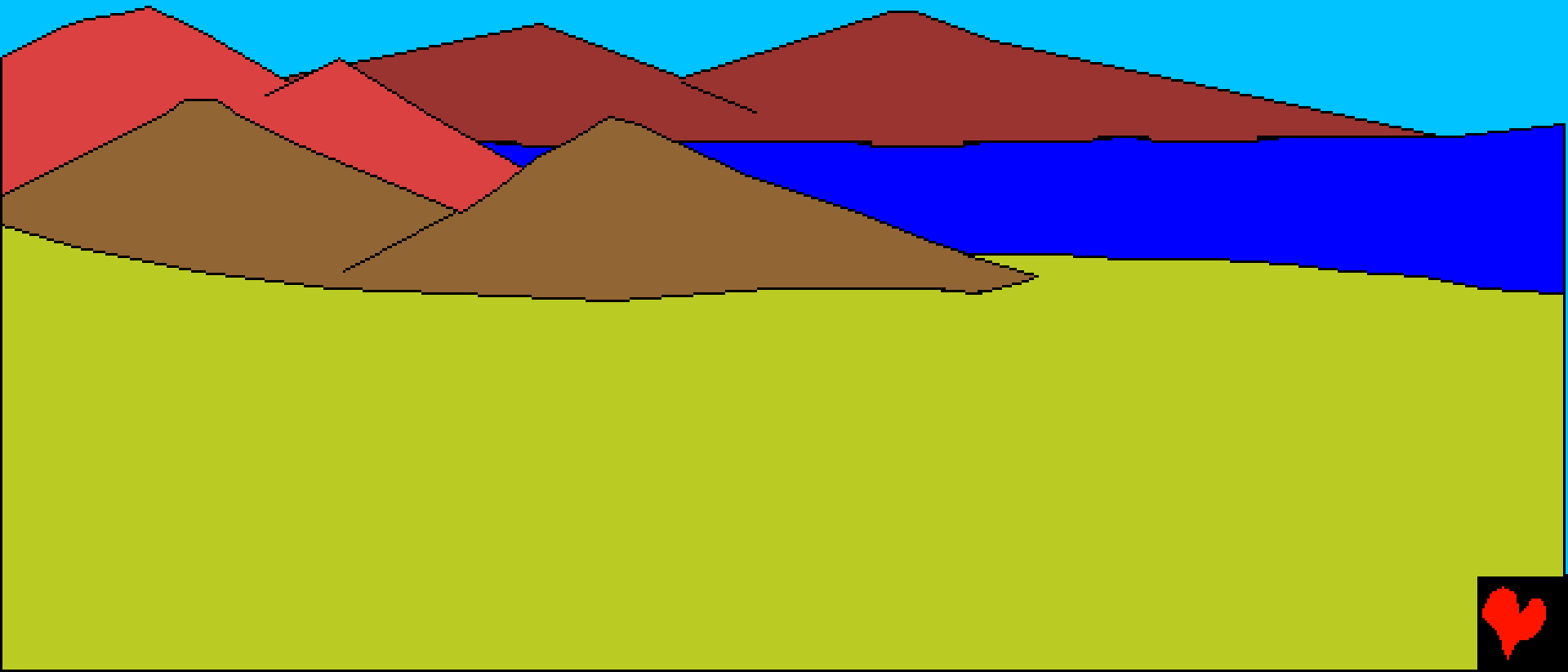
Kabili kwalisaba ulubuto. Lesa
ainike ulubuto ukutla akasuba elyo
imfimfi atile ubushiku.



Elyo kwalisaba icungulo no lucelo
ubushiku bwakutendeka.



Pa bushiku bwacibili, Lesa abikile
amenshi muli bemba. Pa bushiku
bwacitatu, Lesa atile, "Nakumoneke
umushili uwauma." Kabili calicitike.



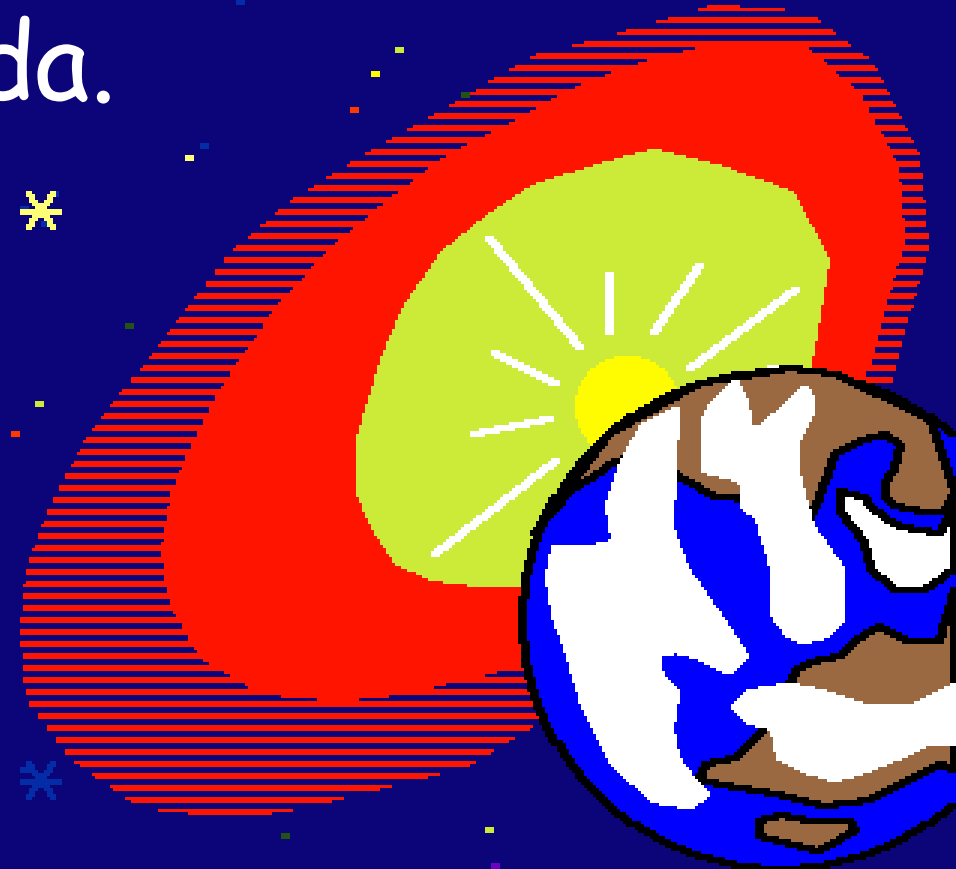
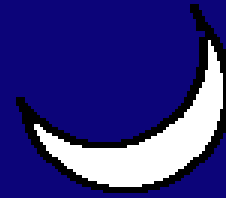
Kabili Lesa aebele ukutla
icani, amaluba ne miti
fimoneke. Kabili
fyalimoneke.



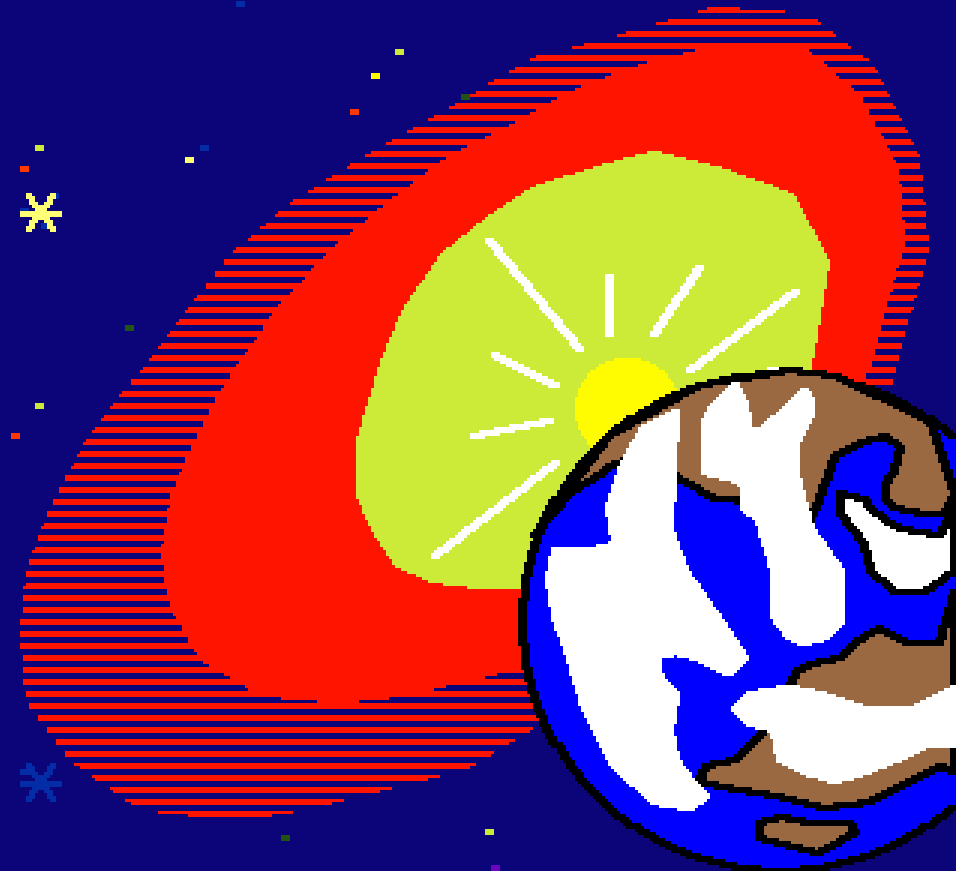
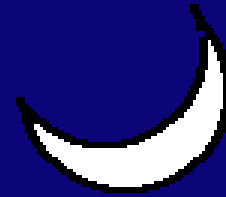
Elyo kwaba icungulo nolucelo
ukulenga inshiku
ya citatu.



Elyo nomba Lesa apangile
akasuba, umweshi ne
ntanda ishingiri ishakuti
takwaba uungapenda.



Elyo kwaba icungulo
nolucelo ukulenga
inshiku shine.



Ifilengwa na Lesa
ifya mumenshi,
amasabi, ifyuni
efya konkelepo
pa butantiko
bwa kwa Lesa.



Pabushiku
bwalenga shisano
apangile amasabi
ayakalamba
notunono, ifyuni
ifikalamba
notunono.



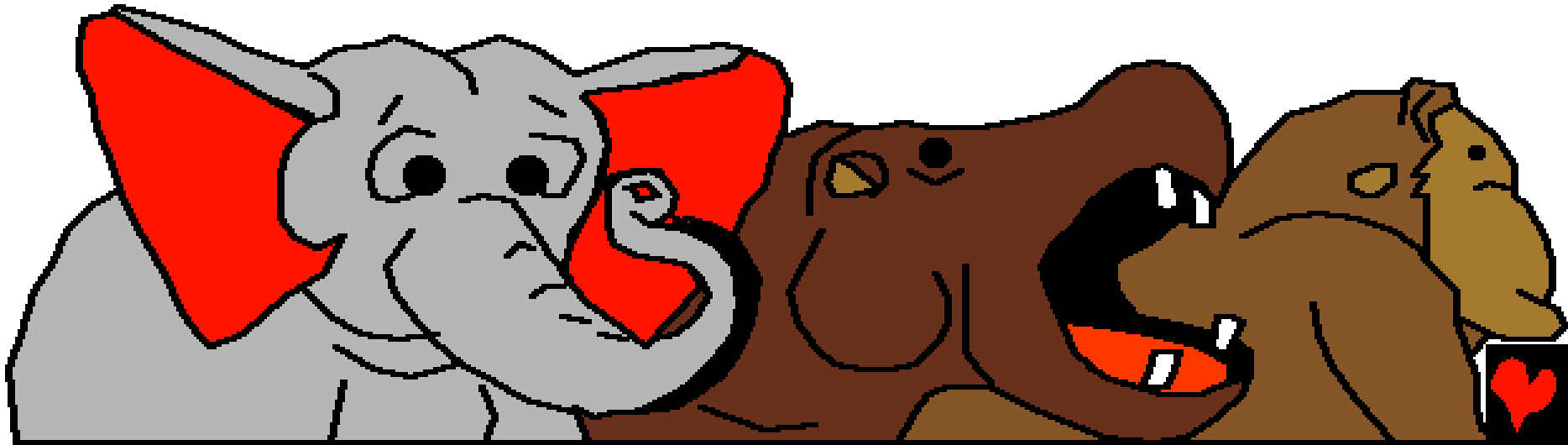
Lesa apangile
amasabi
ayapusana-pusana
no kuyabika mu
menshi ukutla
fileyangala
mumenshi na
mulwelele ye
sonde lyonse.



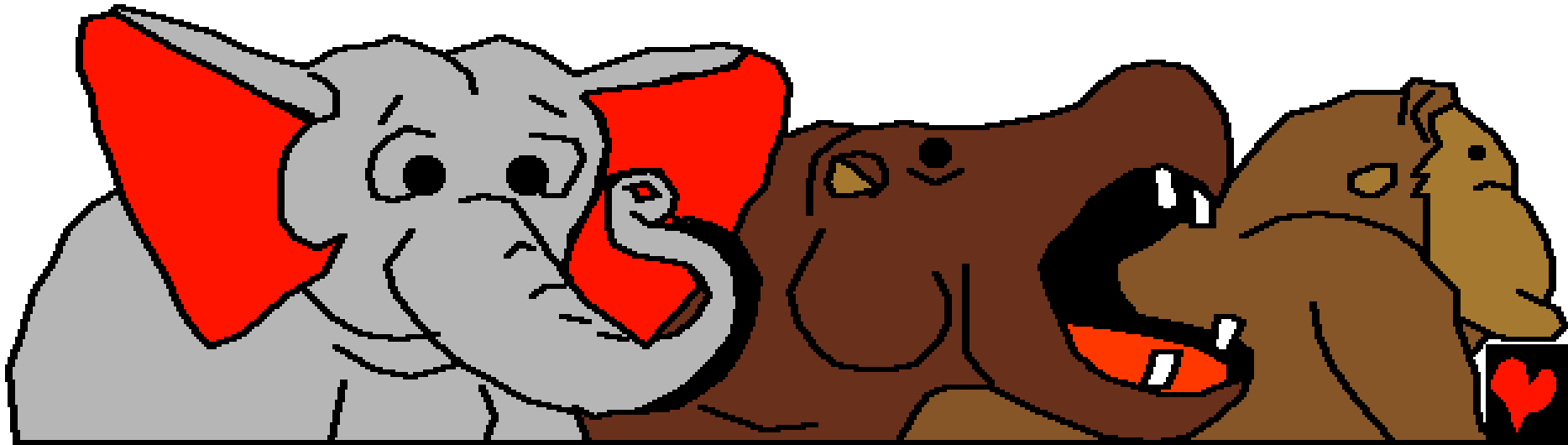
Elyo kwaba
icungulo no
lucelo
ubushiku
bwalenga
shisano.



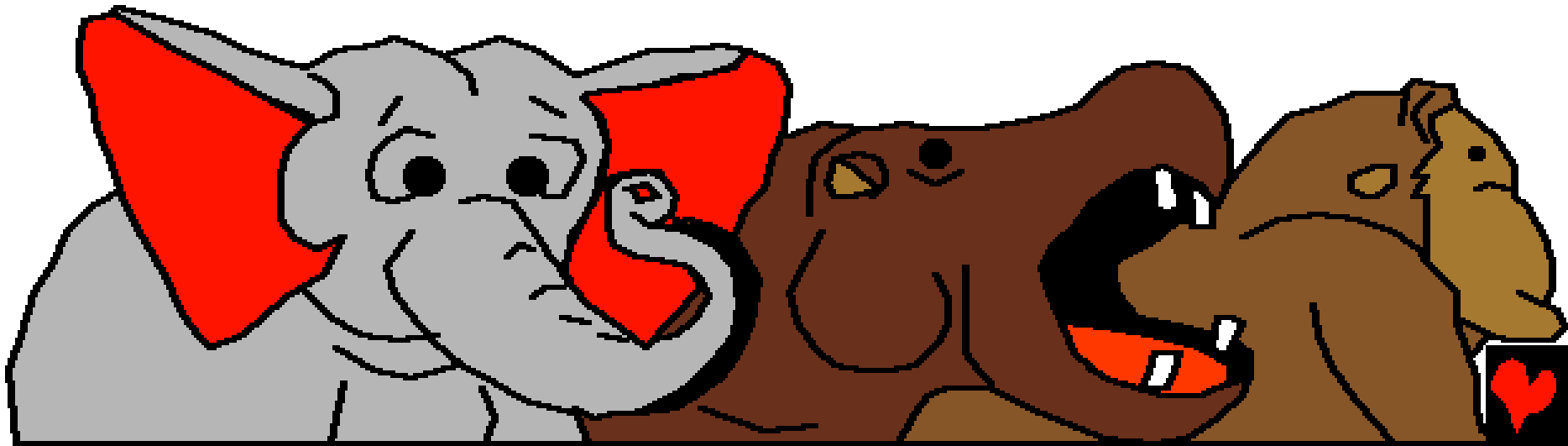
Ukufuma apo, Lesa alisosele nakabili.
Atile, "Isonde nalipele ifilengwa
ifyumi..." Inama ishapusana pusana
shonse, utushishi na fimbi
fyalimoneke.



Ekwali insofu ishikulu na imoo.
Ba kolwe, ing'wena ne imyambo
nefyongoli. Inama ishapusana-
pusana shonse ashipangile pali
ubu bushiku Lesa.



Kabili icungulo no lucelo ukulenga
inshiku shisanu na bumo.



Lesa alicitile icintu cimbi pa bushiku
kwalenga shisano na bumo. Icintu
icaibela nganshi. Fyonse fyali
ifya pekanishiwa pa
muntu. Kwali ifyakulya
mumabala,
ne nama isha
kumubombela.



Elyo Lesa atile,
"Natupange
umuntu
mucipasho
cesu. Mukuti
alebaka fyonse
ifili pesonde."



EICO LESA ALI BUMBILE
UMUNTU MUCIPASHO CAKWE;
MUCIPASHO
CAKWALESA ALI
MUBUMBILE
ENA ...



Lesā alilandile
na Adam.



“Lyeni ifyo
mungatemwa
mwibala. Lelo
tekwesha ukulya
kucimuti icilenga
ukwishiba icisuma
ne cibi. Ubushiku
ukalyako ukafwa
icine cine.”



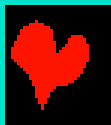
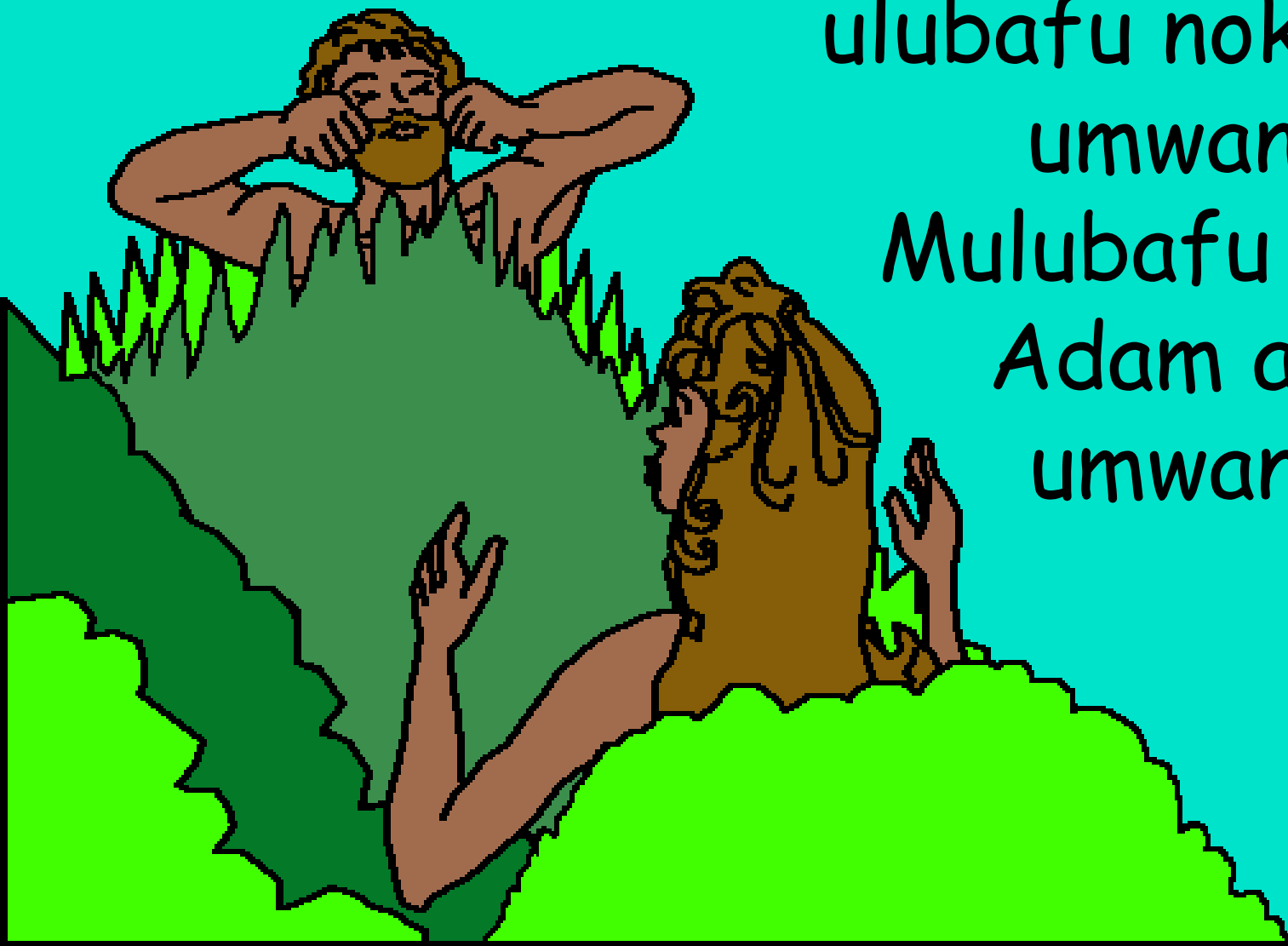
Kabili Imfumu Lesa atile, "Tecisuma ukuti umuntu abe eka. Nalapanga uwakumwafwilisha."
Lesa aletele ifyuni fyonse ne nama kuli Adam.



Adam alifipele amashina fyonse.
Afwile ali uwacenjela pakucita icintu
ca musango uyu. Lelo pa
fyuni ne finama fyonse
tapali nelyo cimo
icabanga Adam.



Lesa alilalike Adam utulo. Mu
muntu uulele Lesa alibulamo
ulubafu nokupanga
umwanakashi,
Mulubafu lwakwa
Adam apangile
umwanakashi.



Umwanakashi Lesa apangile ewalifye
uwalinga ukwampana
na Adam.



Lesa abumbile fyonse
munshiku shisanu na
bumo.



Elyo Lesa alibupalile
ubushiku bwalenga shisano
na shibili nokubulenga
ubushiku bwa kutusha.



Mwibala Iya Eden, Adam
no mwina mwakwe Eva bali
abasansamuka nokumfwila
Lesa. Lesa ali ni Mfumu
yabo, kapela na cibusa
wabo.



Lintu Lesa Apangile Fyonse

Ilyashi ukufumina mu cebo cakwa Lesa,
Icipingo,

isangwa mu

Ukutendeka 1-2

"Pakwingila pa cebo cenu cipela ulubuto."
Amalumbo 119:130



Impela



Ili lyashi Iya mucipingo litweba pali
Lesa wesu uwatubumbile kabili afwaya
ukutilati mumwishibe.

Lesa alishiba twalicyita ifintu ifibi, eflyo eta
ulubembu. Ukupanikwa kwa lubembu ni mfwa,
lelo Lesa alimitemwa sana alitumine umwana
wakwe eka, Yesu, ukufwa palupanda no
kupanikwa pa lubembu lwenu. Yesu alibuka
nokuya kumwabo Kumulu. Nga mwasubila muli
Yesu nokumulomba ukuti amyelele imembu
shenu, amyelele! Kabili alaisaikala muli imwe
ililine, kabili mukekala nankwe umuyayaya.



Nga mwasubila ukutla ici
ecishinka, soseni amashiwi aya kuli Lesa:
Mwemutemwikwa Yesu, nasubila ukutla
nimwe Lesa, lelo mwasangwike umuntu
ukutla mumfwile imembu shandi, pali lelo
muli abami. Ingileni mumweo wandi
nokwelela imembu shandi ukutla mbe no
bumi bupya, kabili bushiku bumo nkabe
nenu umuyayaya. Ngafweni ukumyumfwila
nokwikalila imwe nga mwana wenu. Amen.

Belengeni Icipingo no kulanda na Lesa cila
bushiku! Yohane 3:16

