

Al-Kitab untu' Ana'-ana'
Memperssembahkan

Rut: Carita
assipojingeng



Parokina Iyanaritu: Edward Hughes

Pa'gambarana iyanaritu: Janie Forest
Alastair Paterson

Pengadaptasina iyanaritu:
Lyn Doerksen

Penterjemana iyanaritu: Pdt.
Jusuf Ursinus Ladja, MTh.

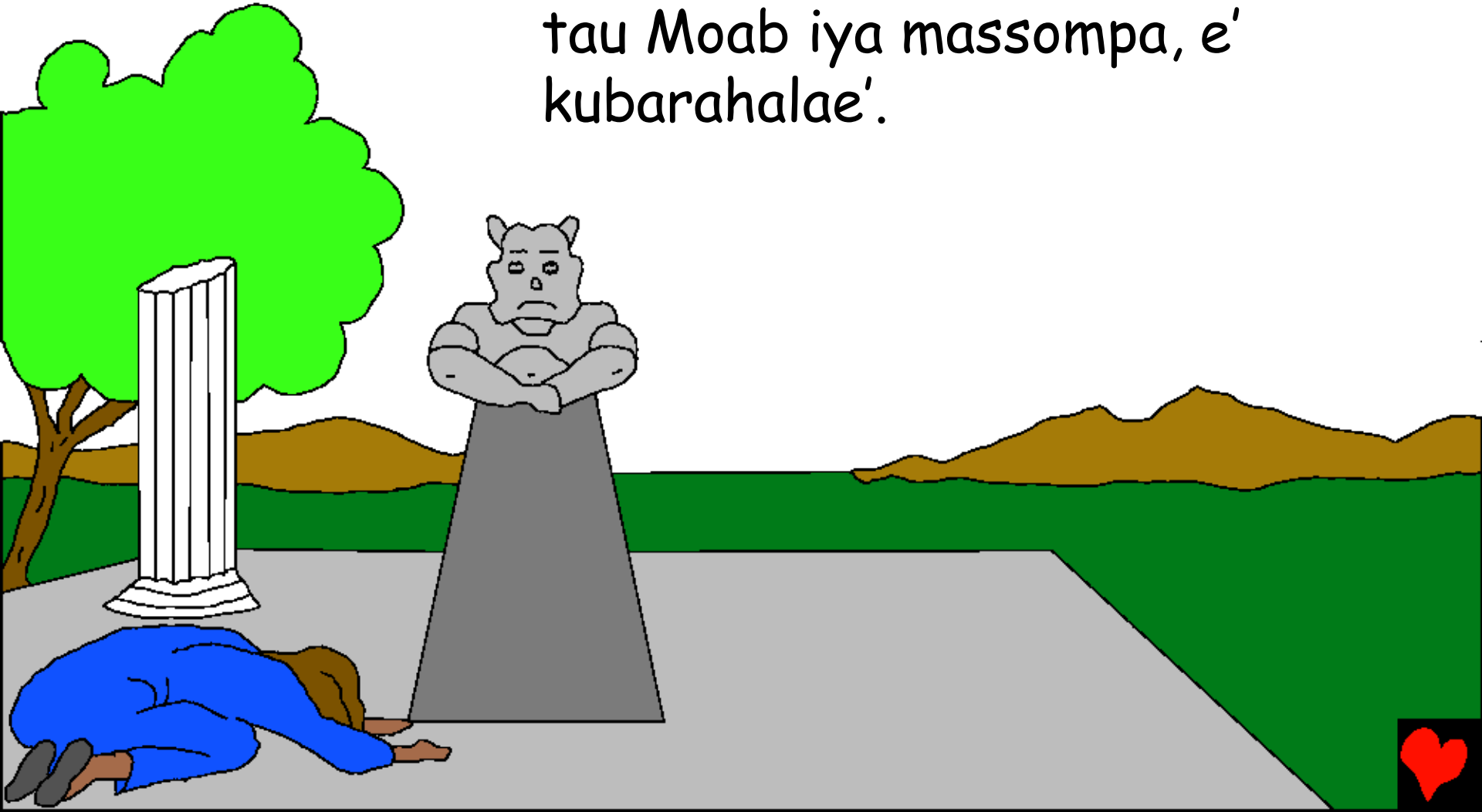
Paproduksina iyanaritu: Bible for Children
www.M1914.org

©2023 Bible for Children, Inc.

Ijin: Weedimmua rilemba iyaré curitaé iyakiya de' nawedding ri balu'.



Narekko weddingko siruntu nene; na nenemu,
tomatuanna nene-nenemu, pole ri keluargamu, nolle
cakkitteki nasaba akessingenna tau riyolota. Laleng
kitta, e' ribacai, seddi nene'Na Yesus yanaritu Rut
tau Moab iya massompa, e'
kubarahalae'.



Carita lao-laona Rut mammula ri Israel purana
carita Simson, siwettu umma-Na puwang, nge' de'na
mateppe' sibawa de; na'tunru ri Puwang'nge'. Tana'
Israel iyaro wettue' nakkenai alupureng,
muisseng'gah aga yaro alupureng,
Alupureng yanaritu, de'gaga
anre, buah-buah, de' najaci
taneng-tanengnge, olokolo
mate' maneng, nanncajingi
mate' temmanre'.



Engka seddi tau asenna Elimelekh, monro ri
Betlehem massibawa benena, dua anana orowane
lokkai sappa anre' Lokkai tana'Moab, seddi negara,
iya taun, na, nasompai ilah-ilah,
de'na'mateppe' ri Puwangnge'.



Iyakiya
iyamanenna

de'namasennang atuwongna

Elimelekh masilise' bola ri Moab. De' nametta,
Elimelekh mate, i nappa dua ana orowane'na
mate, toi,

CHILION

ELIMELECH

MAHLON

Benena Elimelekh yanaritu Naomi, monroni
massibawa manettun'na yanaritu Rut sibawa
Orpa. Dua manettunna tau Moab maneng.



Naomi mancaji janda'ni, nengkalingai makkedae.
Puwangnge tulungngi umma-Na nareng'ngi anre'.
Iyanaro sabana meloni lisu kampong jajingen'na.

Agana naseng manettuna? Naomi
pudangngi manettunna tetteno monro

ri Moab,
weddingmuko
mallakai
pe'meng.



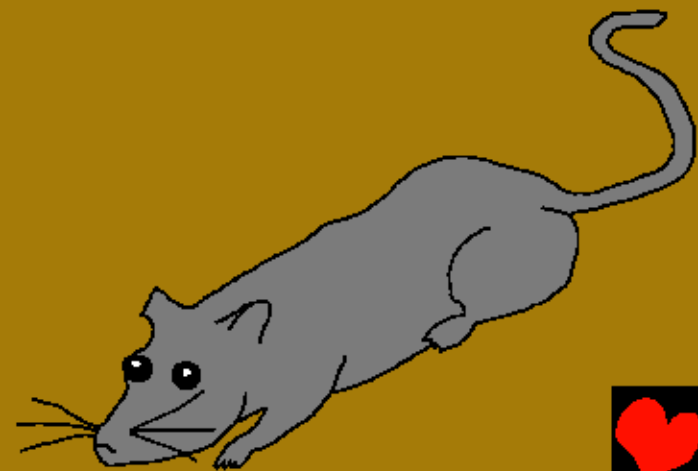
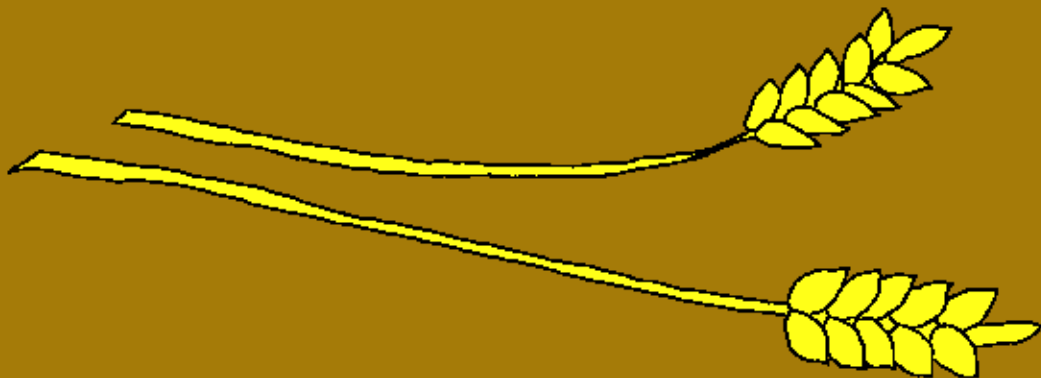
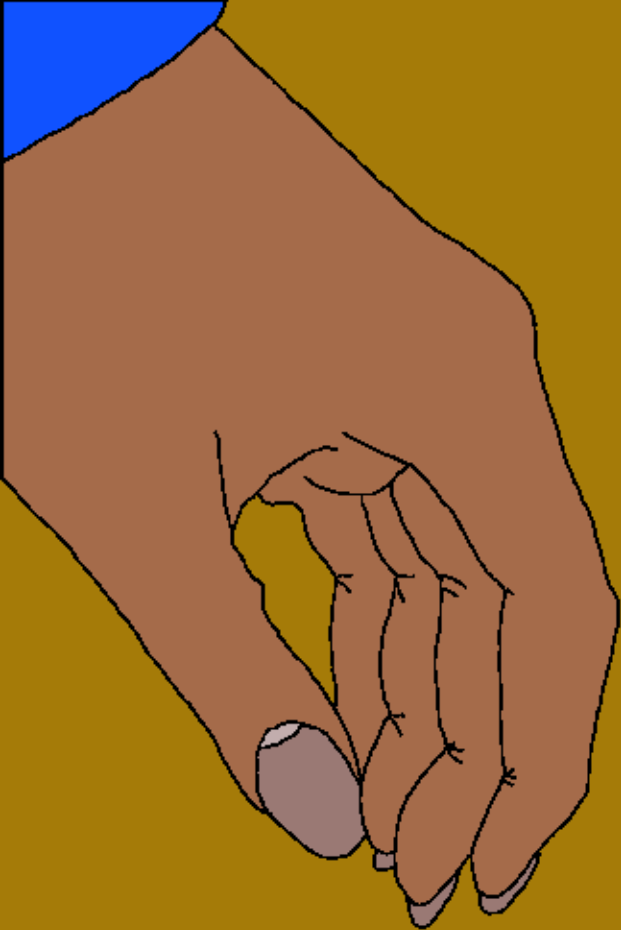
Orpa lisuni lao ri tomatoanna/keluargana. Iyakiya
Rut de'nelo, Rut de'nelo salaiwi matuan'na.



Masennang manengngi silaun'na Naomi mitai engkai
lisu ri Yerusalem. Iyakiya nellauwi kuammengngi
yobbii Mara (mapai)
tenniya Naomi (masennang)
nasaba Puwang Makuasae'
nappessaka tuwo penno
aparireng. Naomi lisu
de'gaga natiwi sangaddina'
Rut engkai maccue.



Muto'ni Rut masompa barahala
sippada tau Moab laingnge'
iyakiya Rut nasompa'i Allataala
ya tuwoe', Allataalana Israel.
Rut majjama lanre kuammeng'ngi
genne' mua anre'na massibawa
Naomi. Ezzo-esso maccue ku
parengngalae, lao ri dare'e,
mittei gandong iya sempe'e.





Boas seddi tau sogi
mappunangi dare
maluang, nengkalingai
pekkugi kessina iyaro
Rut lao ri Matuanna.
Wettuna siruntu Rut,
Boas tulungngi,
naparentangngi lao
ripajjama daree'na untu'
pasempei sigoppo-goppo
gandongnge' ri munrina.
Boas mammulani
napoji Rut.





Rut napudangni Naomi
lao-laona akessingenna
Boas. Naomi
napakalebbii' Puwangnge'.
Boas yanaritu keluarga
macaweta, alena
ritu harusu
matanggungjawa'
lao riatuwongetta.



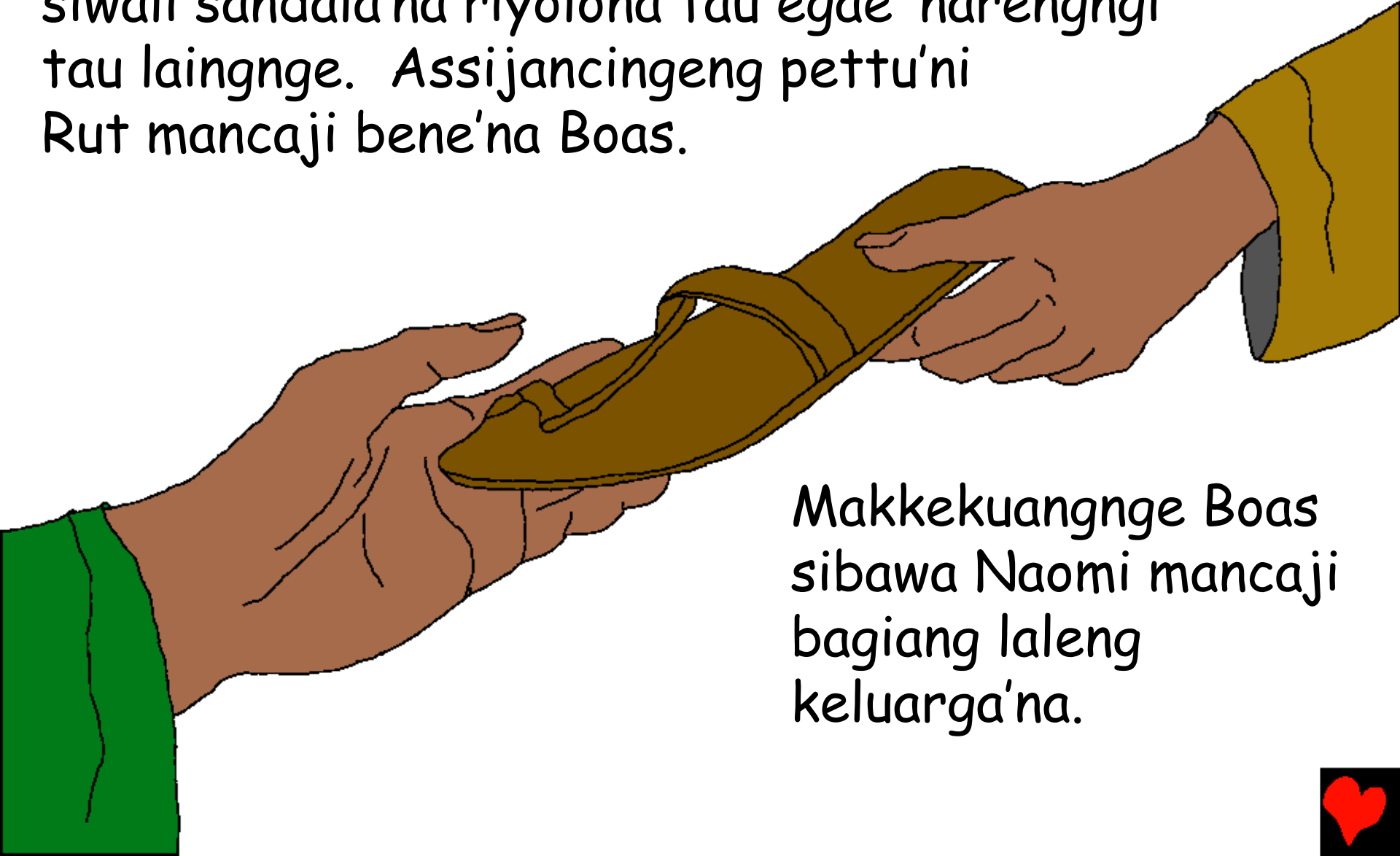


Makkuniro pede
esso, pede'
marilaleng'ni
assipojingen'na,
Boas meloni
pu'benei Rut
kuammengngi
naparakaiwi tana

appunangenna keluargana, Iyakiya engka
keluarga laing iya lebbi macawe'e, iyaro
sitongenna wedding napile pammulang,
Iyaro tauwe nacinnai'wi tana'na, iyakiya
de'nelo pubenei Rut. Hukkungnge kurao
poadai de'nawedding nala, seddi,
iyakiya de'nacinnai'wi laingnge'.



Iyaro wettue, de'gaga ajjamakeng untu' seddi assepekkereng. Boas napessangngi siwali sandala'na riyolona tau egae' narengngi tau laingnge. Assijancingeng pettu'ni Rut mancaji bene'na Boas.



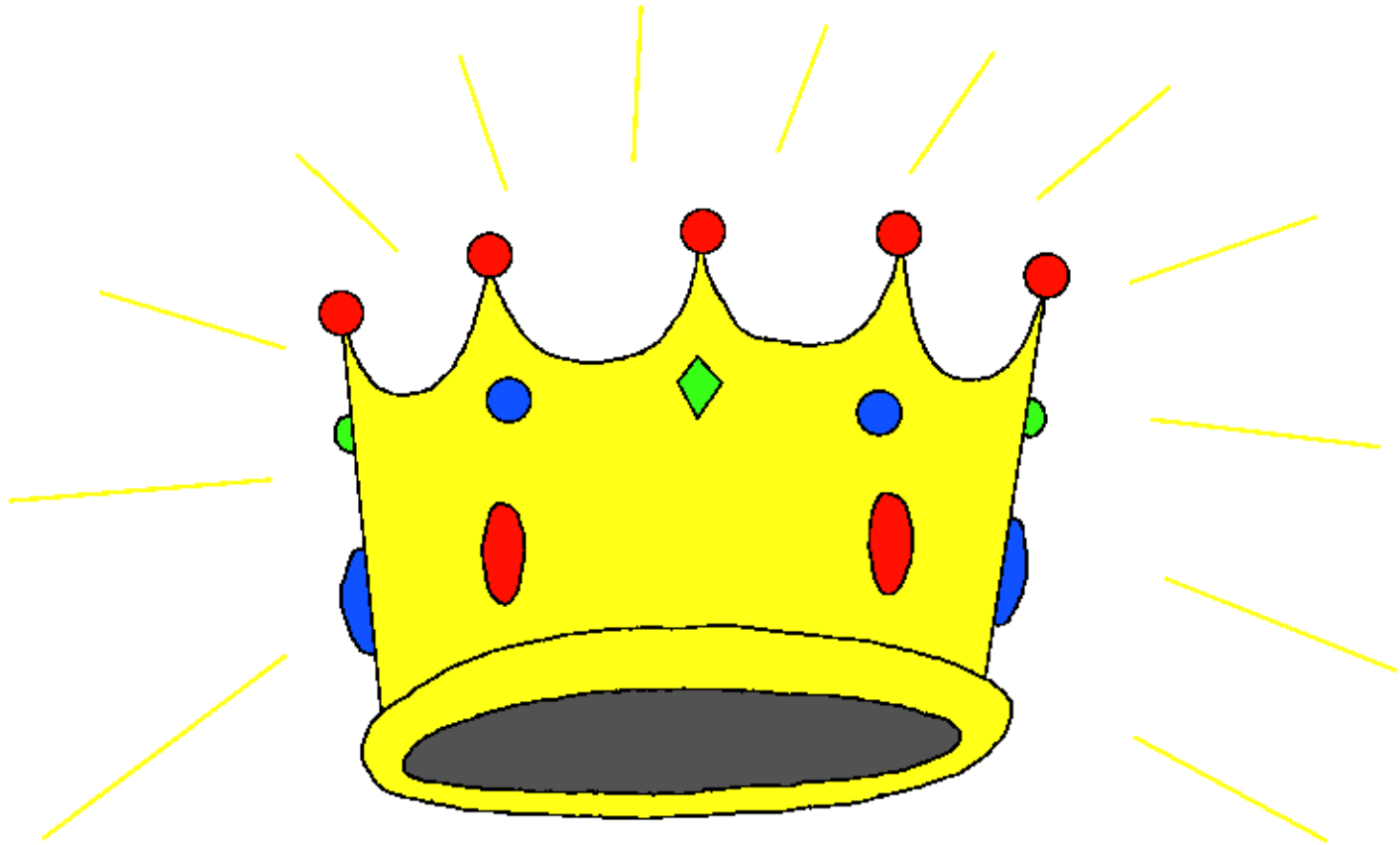
Makkekuangnge Boas sibawa Naomi mancaji bagiang laleng keluarga'na.



Ana' macua'na Boas
asenna Obed. Yanaritu
nene'na Daud Arung
malebbie' ri Israel.



Iyakiya lebbi mappabengnga, saba ana'na Obed yanaritu nene-nenena Puwang Yesus Kristus. Yesus pole ri assossoreng keluarga Daud untu mancaji Arung riyase'na sininna Arung'nge sibawa pappasalama'na Linoe'.



Rut: Carita assipojingeng

Seddi curita polé riada-adanna Puang
Allataala, Al Kitab,

riruntu' rilaleng

Kitta Rut

"Rekko ripakanessai, ma'bbérei tajang
pappaguruwam-Mu." Mazmur 119:130



Paccappareng



Iyaré curita pole ri Al-Kitab powadai passalenna Puang kaminang malebbi'é iya puraé pancajiki,' naiya maélo' toi kuammengngi idi' misseng toi Aléna.

Puangngé naissengngi makkeda purai ri pogau maja'é, iya riasengngé dosa. Pahukkungenna dosaé iyanaritu amateng, iyakiya Puangngé makkumani namaséi ki' na nabbéréangngi Ana' tungke'na, Isa, untu' maté ri aju salli'é sibawa tarimai pahukkungenna dosaé. Isa réwe'I ri atuwongngé sibawa lisui ri bola ri Suruga! Narékko mateppe'ki lao ri Isa na marellau ki' addampengeng lao ri dosata, maéloI pogau'I! MaéloI muttama sibawa monro ri laleng atuwommu, sibawa maéloI tuwo sibawaki' manennungeng.

Narékkó mateppe'ki' makkedaé tongengngi iya ada-adaé, powadai makkuwa lao ri Puangngé:

O Isa, mateppe'ka makkeda Idi' natu Puang, purani' mancaji tau lino enrengngé maté ri dosa-dosa ku, iyakiya makkekkuwangngé tuwoki' paimeng, Muttamaki' ri laleng atuwokku sibawa addampengengngi dosa-dosaku, kuwammengngi weddingngi ku tarimai atuwong mabarué, sibawa engka wettu kuwammengngi weddikka' sibawa ki' mannungeng. Tulungka' maccowé ri Idi' sibawa tuwo pada-pada ana'ta. Amin.

Bacai kitta'é sibawa abbicaraki' lao ri Puangngé esso-esso! Yohanes 3:16

