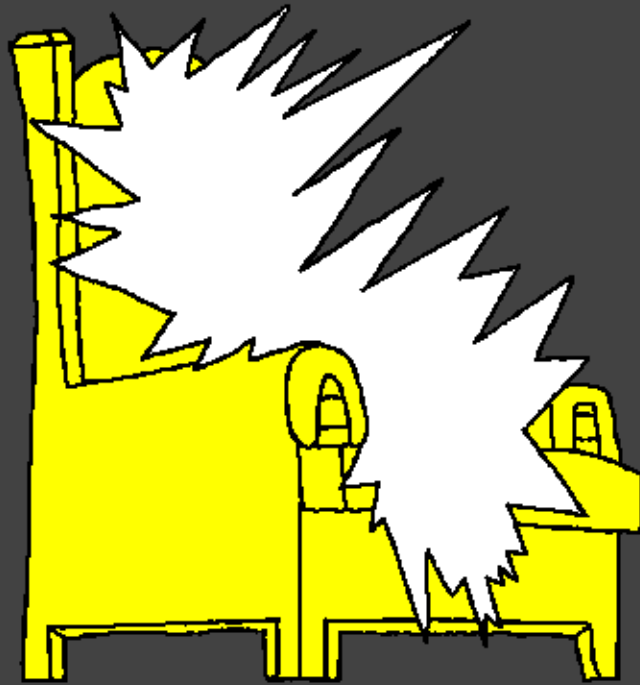


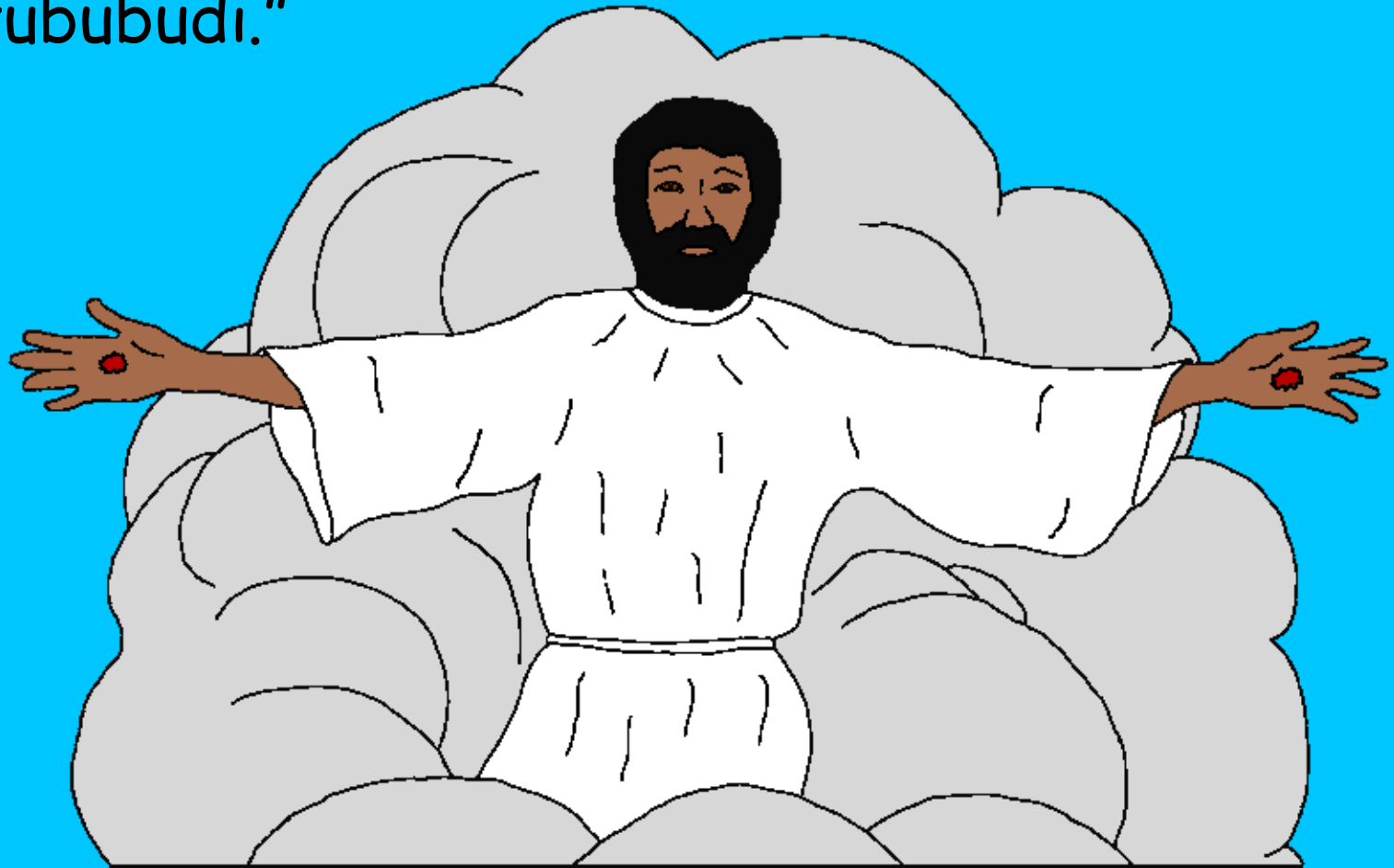
www.BibleForChildren.org



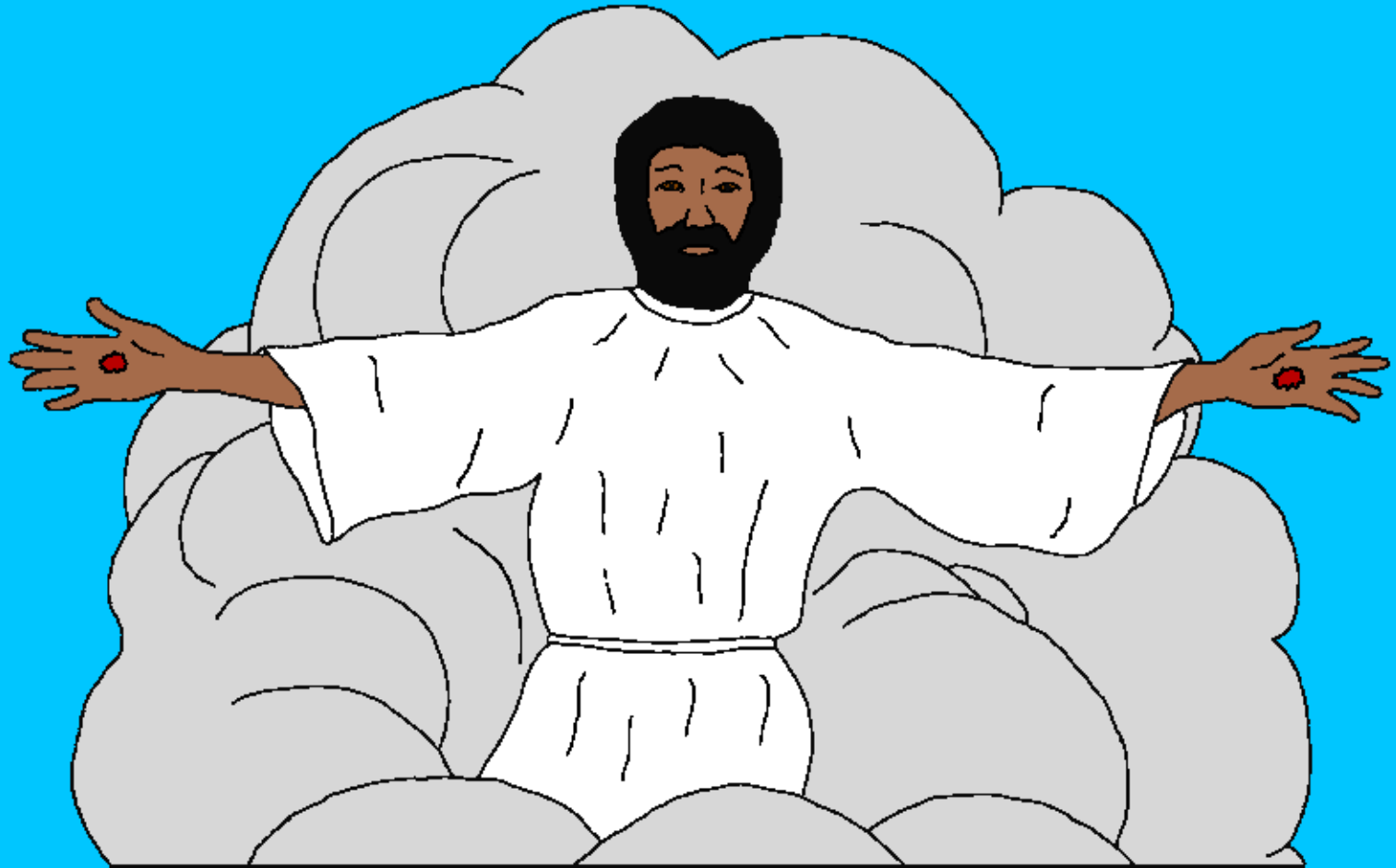
Yoni 14



Yesu wete 'ihewaediya, 'igwae, "Sahena nuwami
sihehelahahaha, ma hesi Yehoba wahemisa ma wete
taugu wahemisaegau. Casainaina Tamagu 'oina
'imiyamiya hada baibaiwadi sitotoholo, 'oinaga
'asainaina 'oina yatauya ma 'imi 'ebemiya
ya'atububudi."

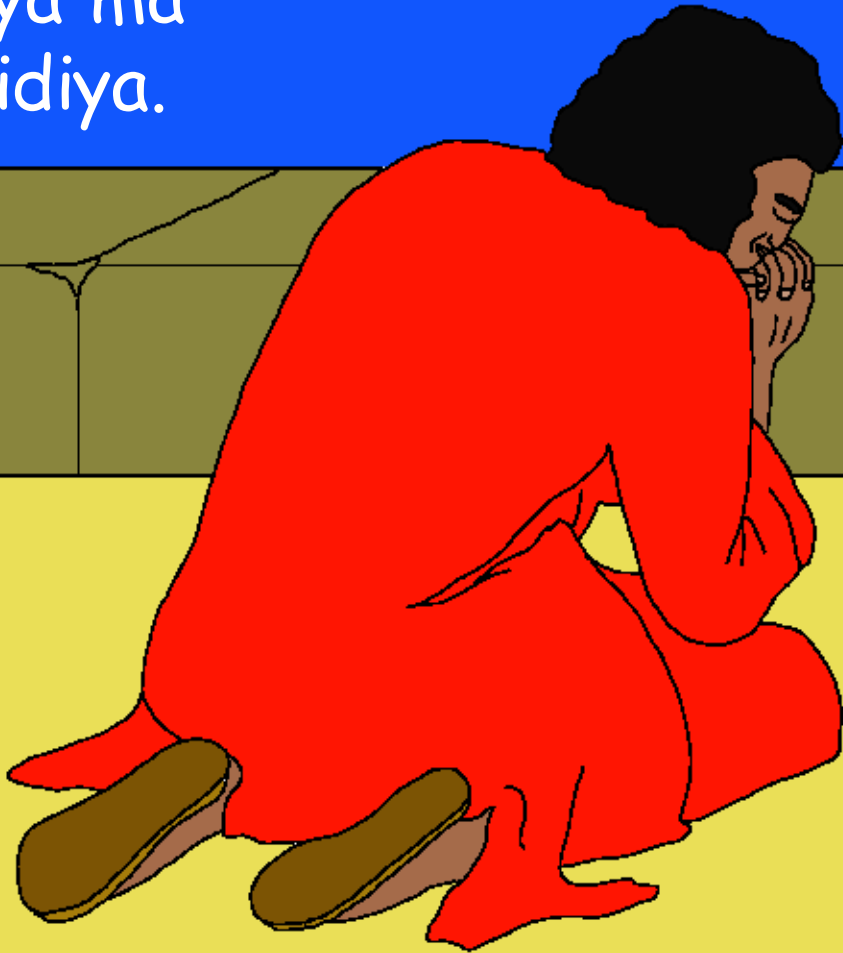


"Gwae bewa 'eguma geya moisa, geya'abwa wete
'oimiya yahehepwaile. Ma 'eguma yatauya ma 'imi
'ebe miya ya'atububudi 'igumwala, nata yahilama
yatoegomi ma tatauya gogoinaina 'oina yamiyamiya,
ma 'omi wete 'oina wamiyamiya."



Taugu tasimiu Yoni. Taheboda 'aigeda pwaiya
Yesu ba'idada, ta 'ina 'ebeloina 'alona 'omi
ma taugu tahe'alama'i'itanegita,

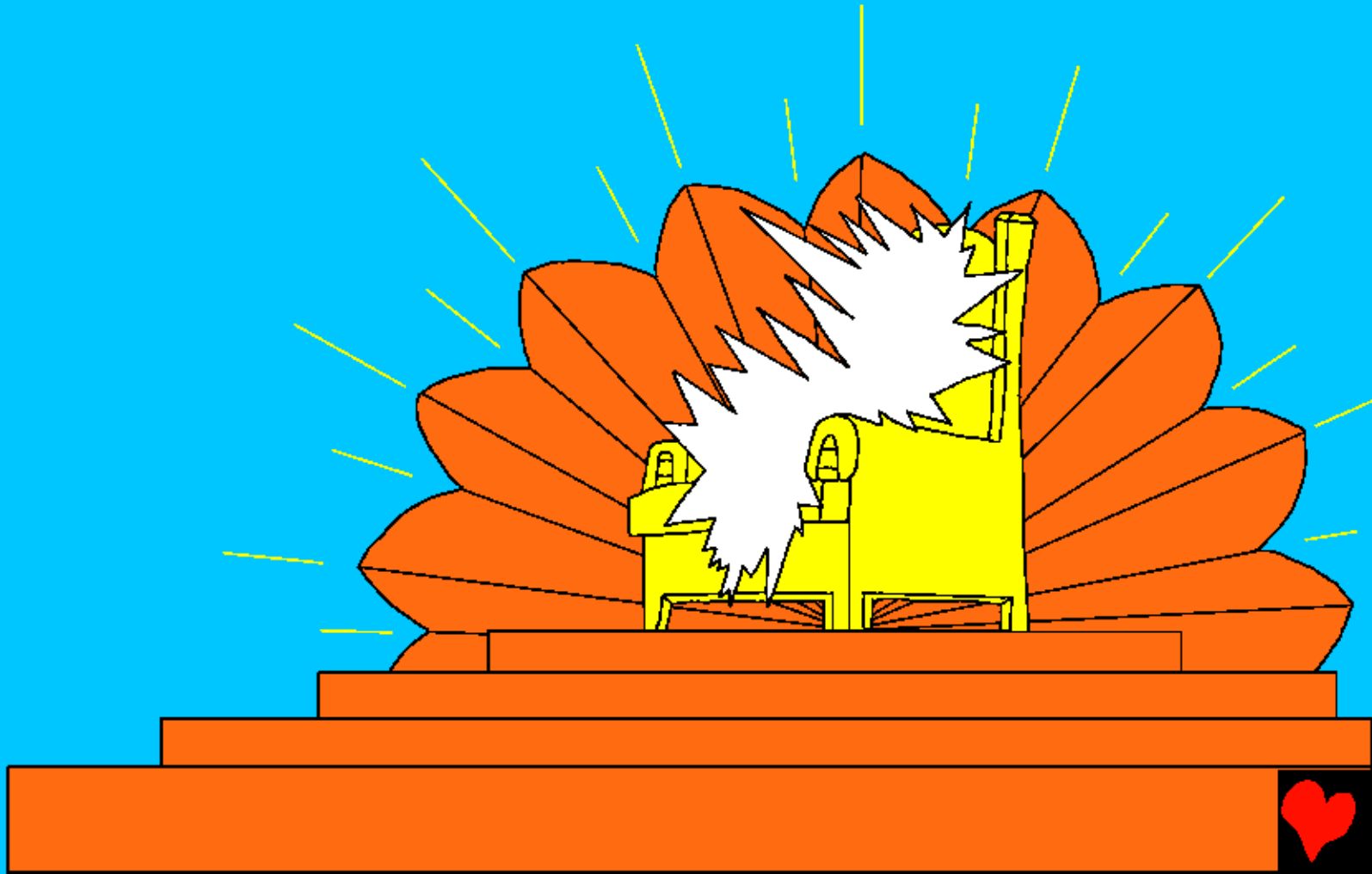
muyamuya ma
mwau 'oidiya.



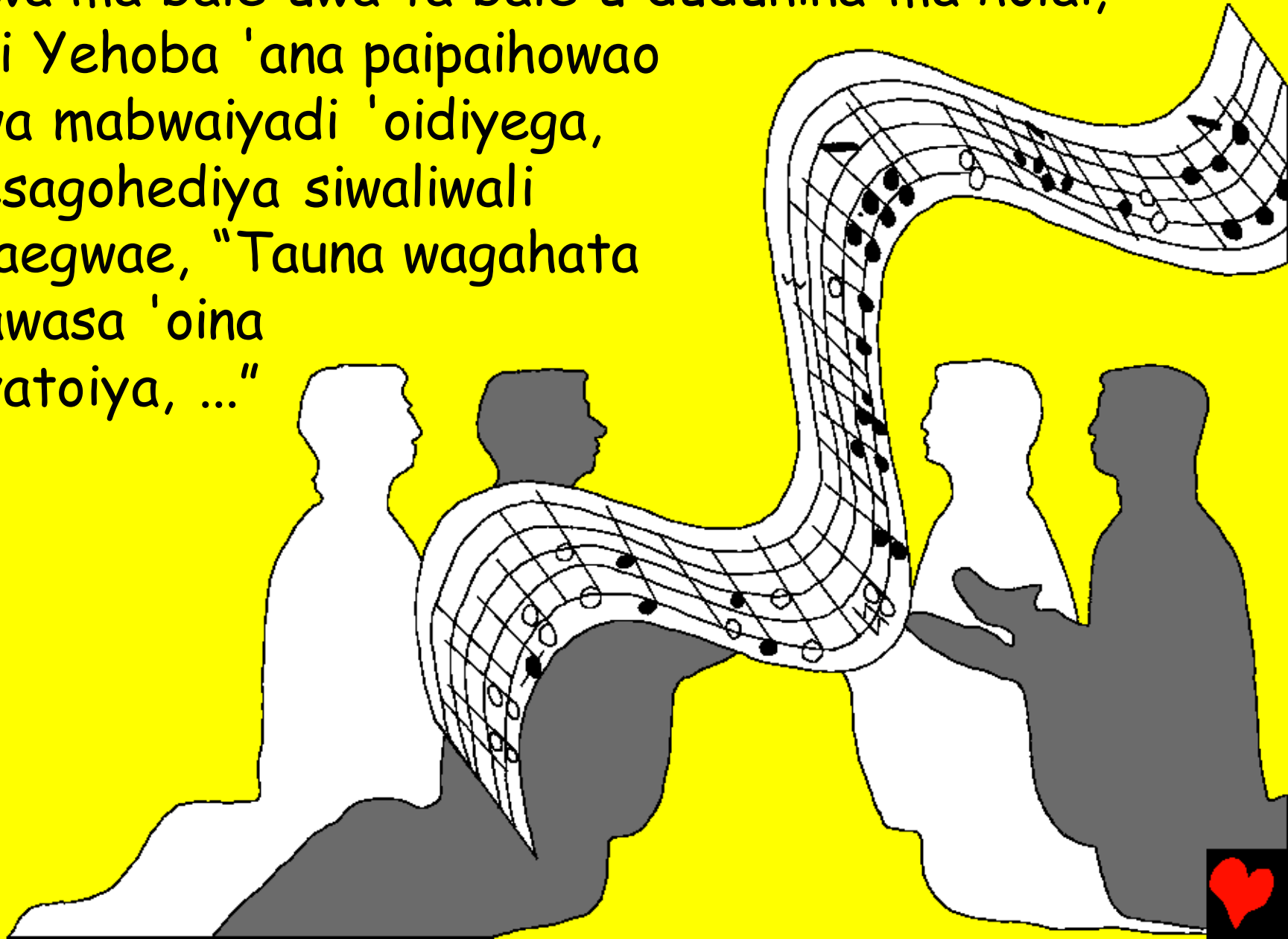
Taugu mwalo sipaigauwa ma silagugauwa
bwanabwana Patimo 'oina, weyahina yaguguya
Yehoba 'ina gwae ma Yesu 'ina tetela.



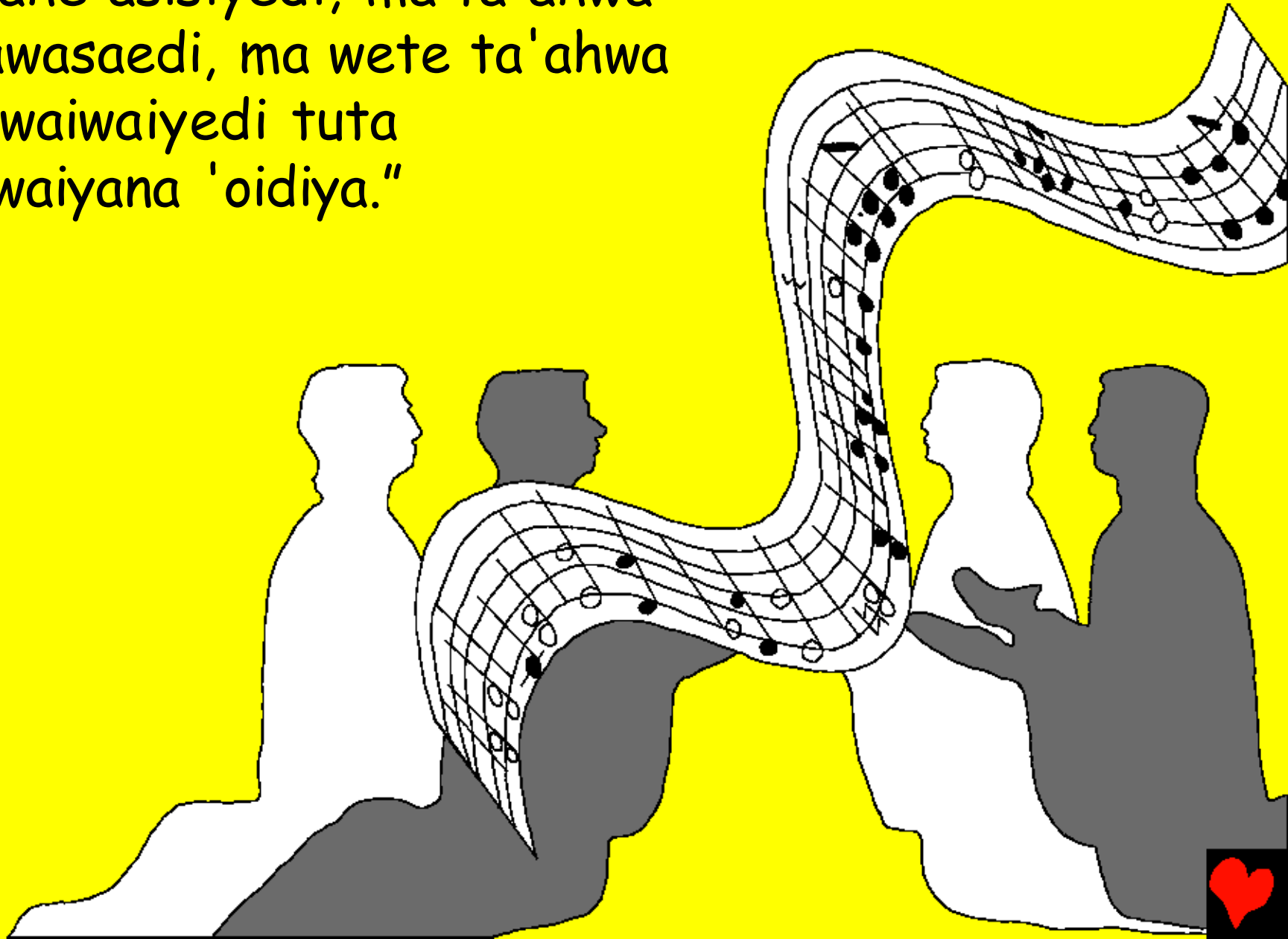
Nage 'oina Yaluyaluwa Tabuna 'ina waiwai yalotohoya,
'oinega galewa 'aigeda toloina ya'iteya 'ina wagahata
wasawasa 'oina 'imiyatoiya.



Ma wete Yehoba 'ana paipaihowao 'aigeda 'aigeda
galewa ma bale'uwa ta bale'u dudunina ma holai,
taudi Yehoba 'ana paipaihowao
tupwa mabwaiyadi 'oidiyega,
yahesagohediya siwaliwali
sigwaegwae, "Tauna wagahata
wasawasa 'oina
'imiyatoiya, ..."

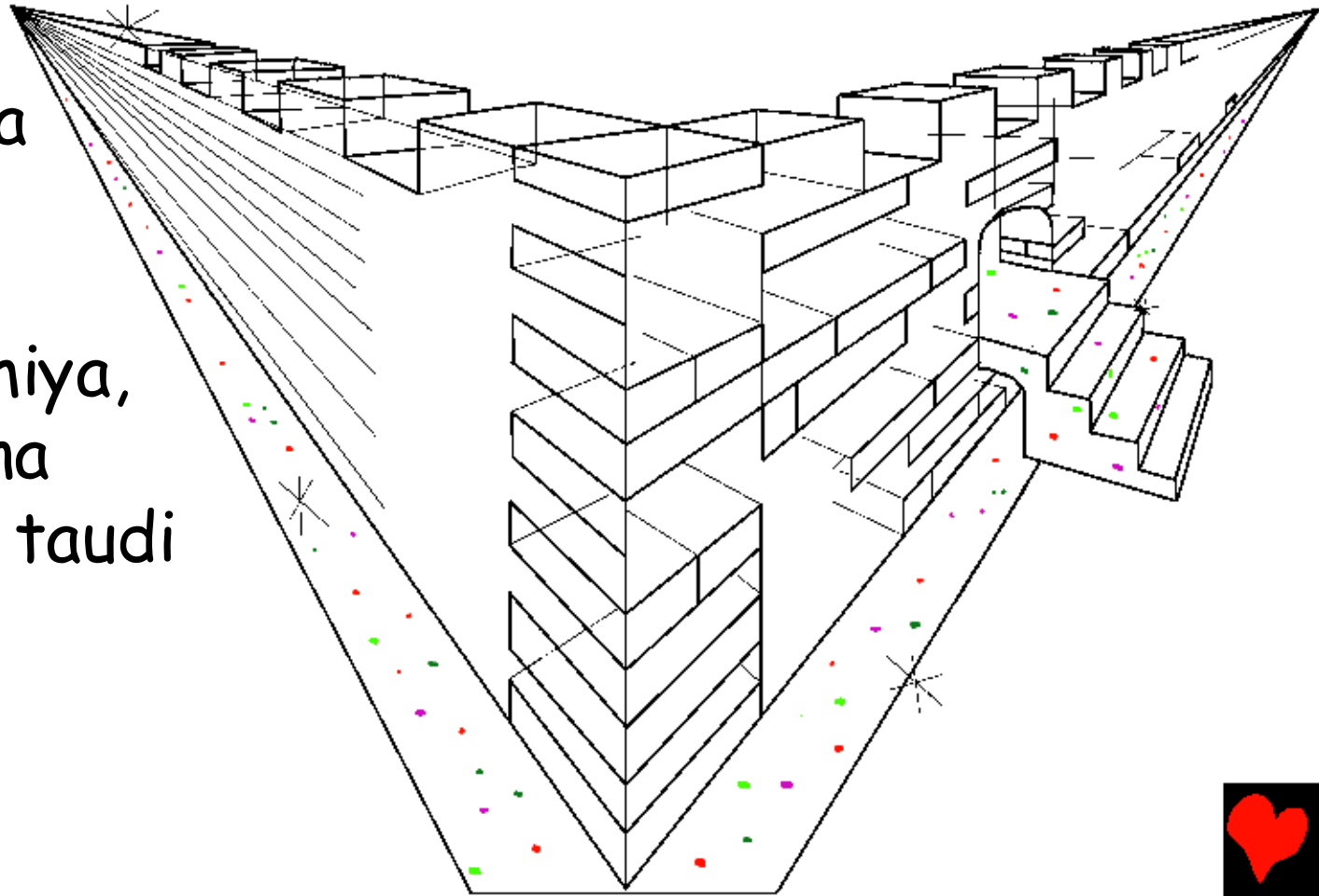


"... ma lamiina ba'idana tahepwatuwedi,
ma tahe'asisiyedi, ma ta'ahwa
wasawasaedi, ma wete ta'ahwa
tohewaiwaiyedi tuta
mabwaiyana 'oidiya."

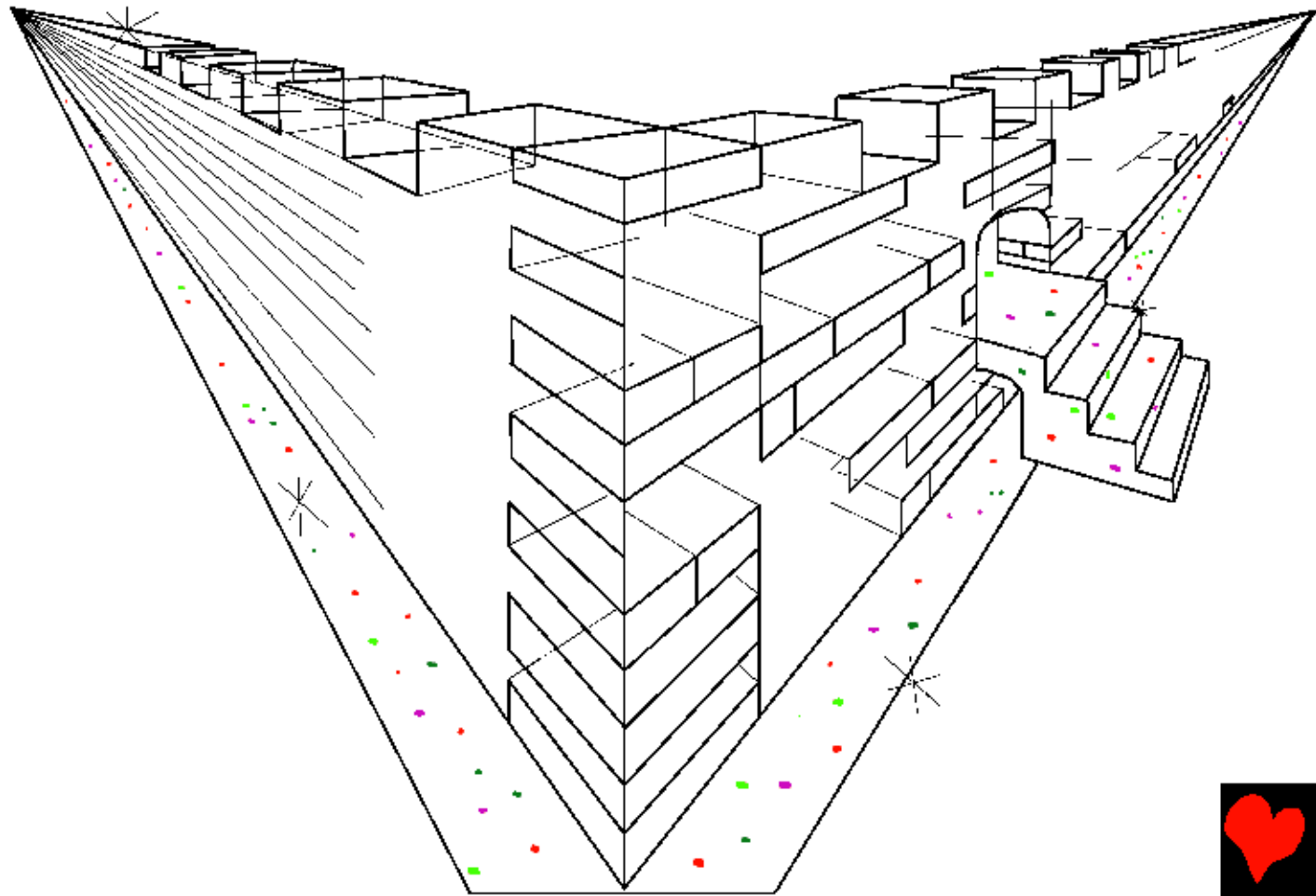


Ma 'asa 'asi'asilalana ya'iteya tauna Yelusalema
hauhauna galewega 'isulusuluma Yehoba 'oinega,
'ihepaseya gide tohai mewahinena 'ipasa ma mwanena
ba'idana sihelobaloba. Ma wagahata wasawasa
'oinega 'enana madouna yahesagoheya, 'igwaeya,

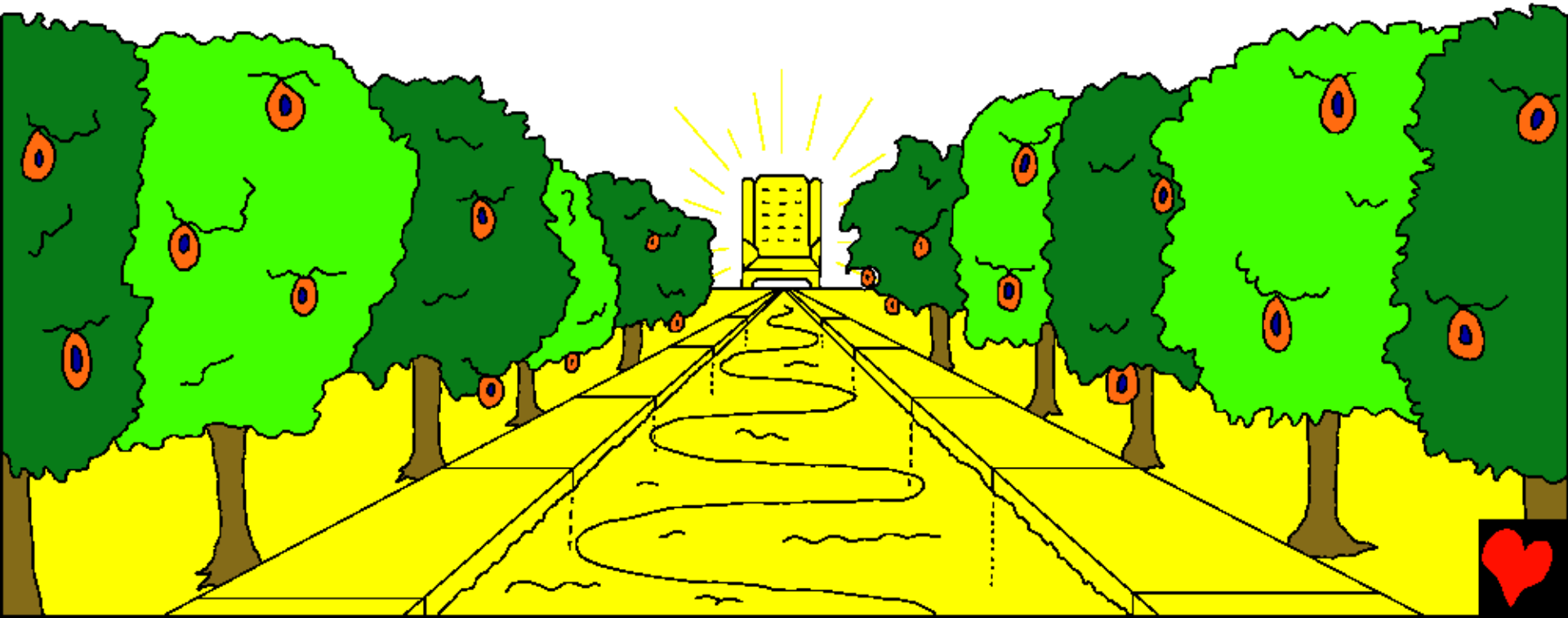
"Cu'ita,
Yehoba ma'ina
tomotaiyao
ba'idanao
'abwa simiyamiya,
weyahina tauna
ba'idadiu, ma taudi
'ina tomota."



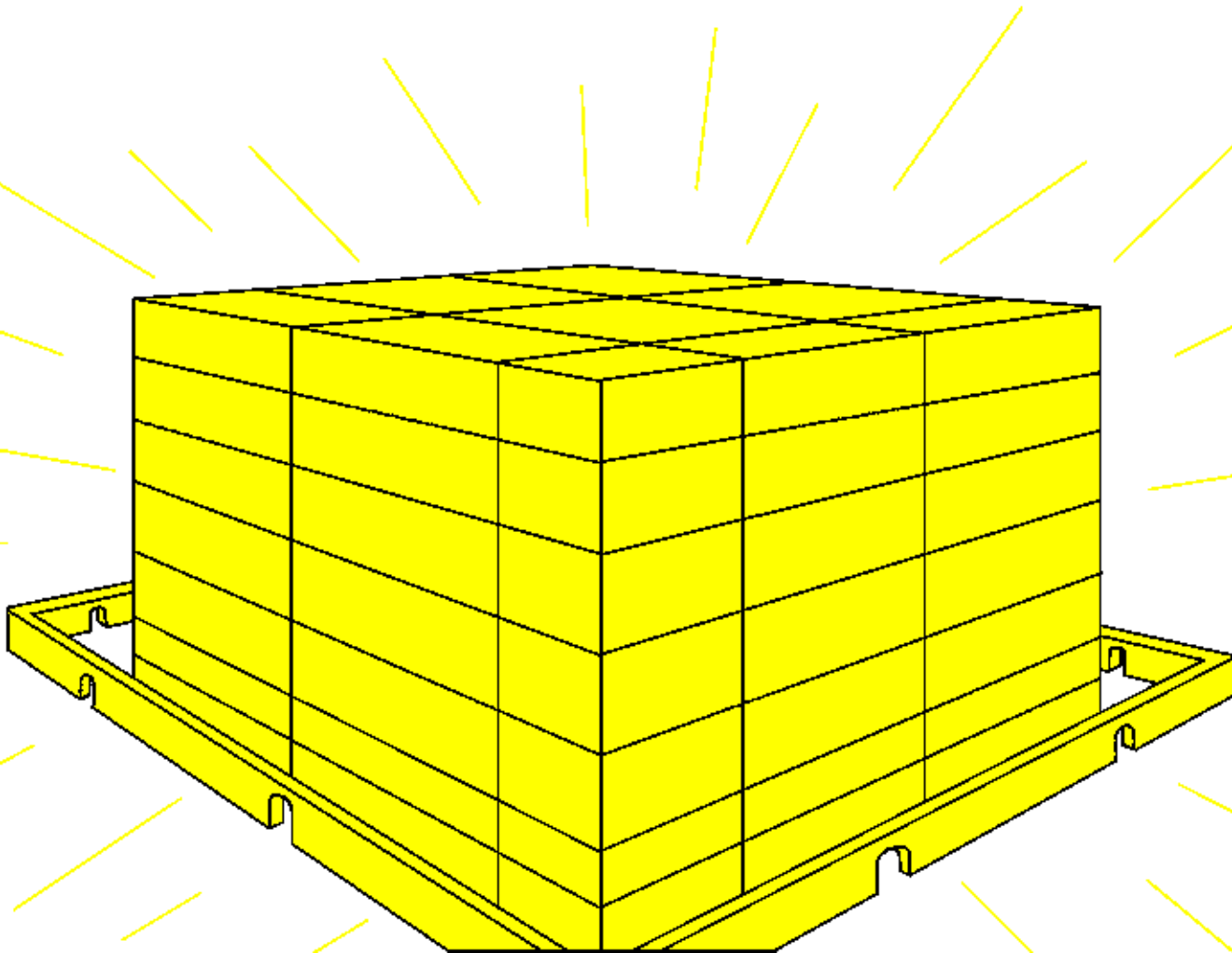
"Moisa Yehoba tauna ba'idadiu, Yehobaina mataneudi 'ilo'i'ilidi, weyahina geya'abwa wete 'amasa, nuwana muyamuya, bo dou 'oidiya 'ilatulatu. Weyahina tupwa miyamiyana 'igumwala pwaiya."



Eeta aneloseina yawasida we'ahina 'ihe'itegauwa,
we'ahinaina matana maemaedanina moisa, Yehoba ma
Lami 'idi wagahata wasawasaina 'oinega 'idaudauma.



Sinala ma wai'ena geya sida saehaneya 'asaina
'oina, weyahina Yehoba 'ina wasawasega 'i'atuhe
'asilaleya mabwaiyana, ma wete Lami 'ihemayaleya
'asaina 'oina.



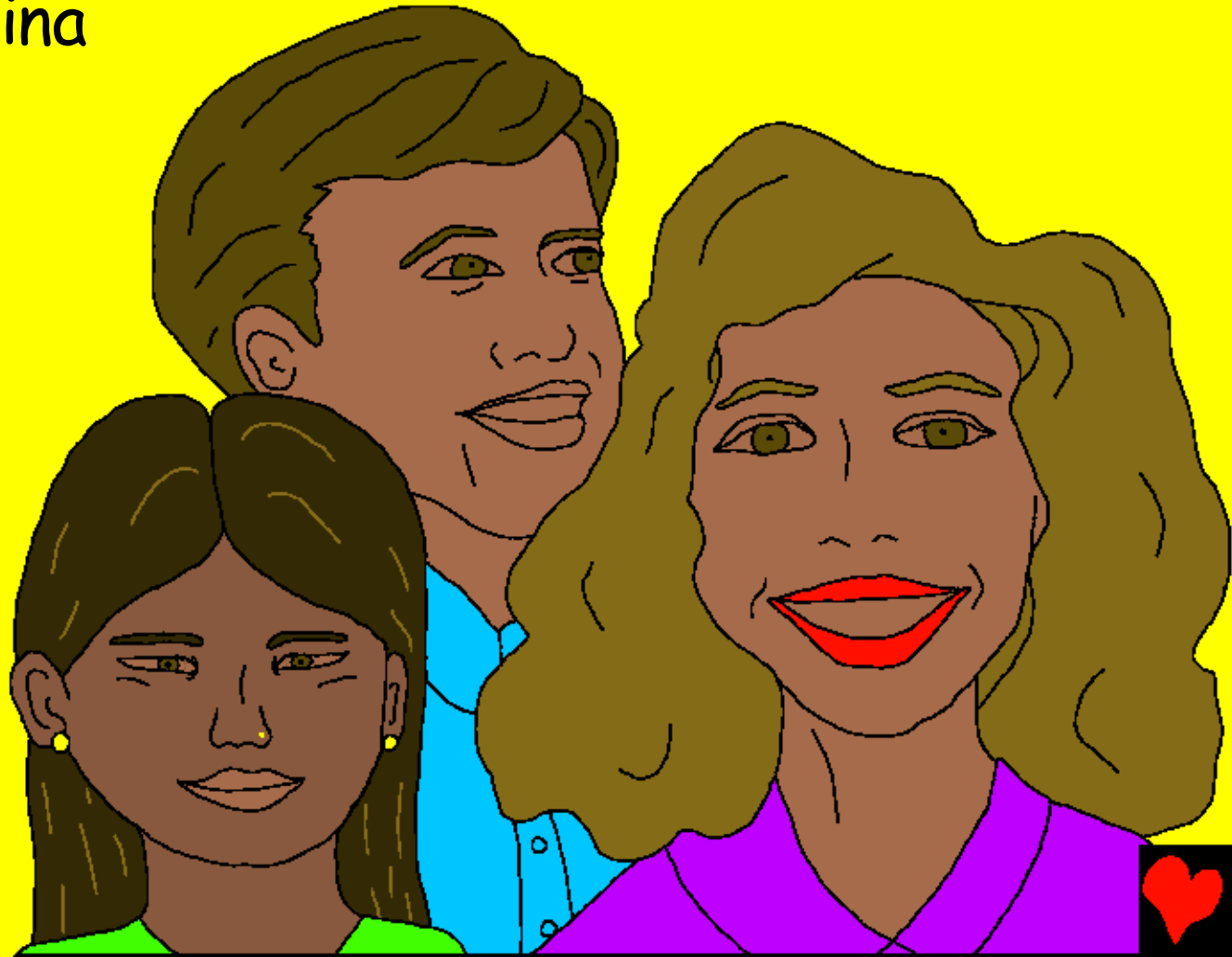
Ta geya'abwa ginaula
bi'ibi'idi 'asaina 'oina
siluhuluhu, nuwana
topaihowa galadi bo
to'e'abo'abowao.
Beno tuwa taudi
sanidi silele pwaiya
Lamiina 'ina bukiya,
beno yawasida
bukina 'oina.



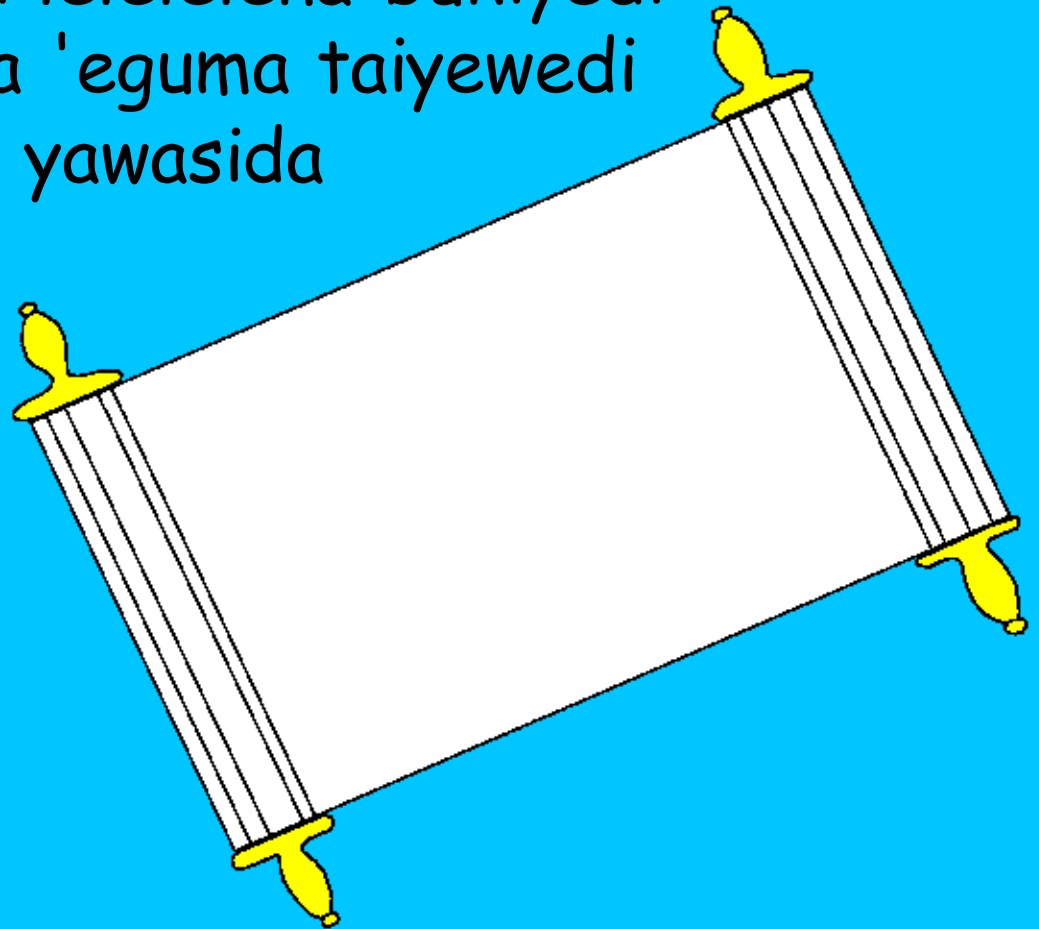
“Yehobaina mataneudi
'ilo'i'ilidi, weyahina
geya'abwa wete 'amasa,
nuwana muyamuya, bo
dou 'oidiya 'ilatulatu.
Weyahina tupwa
miyamiyana 'igumwala
pwaiya.”



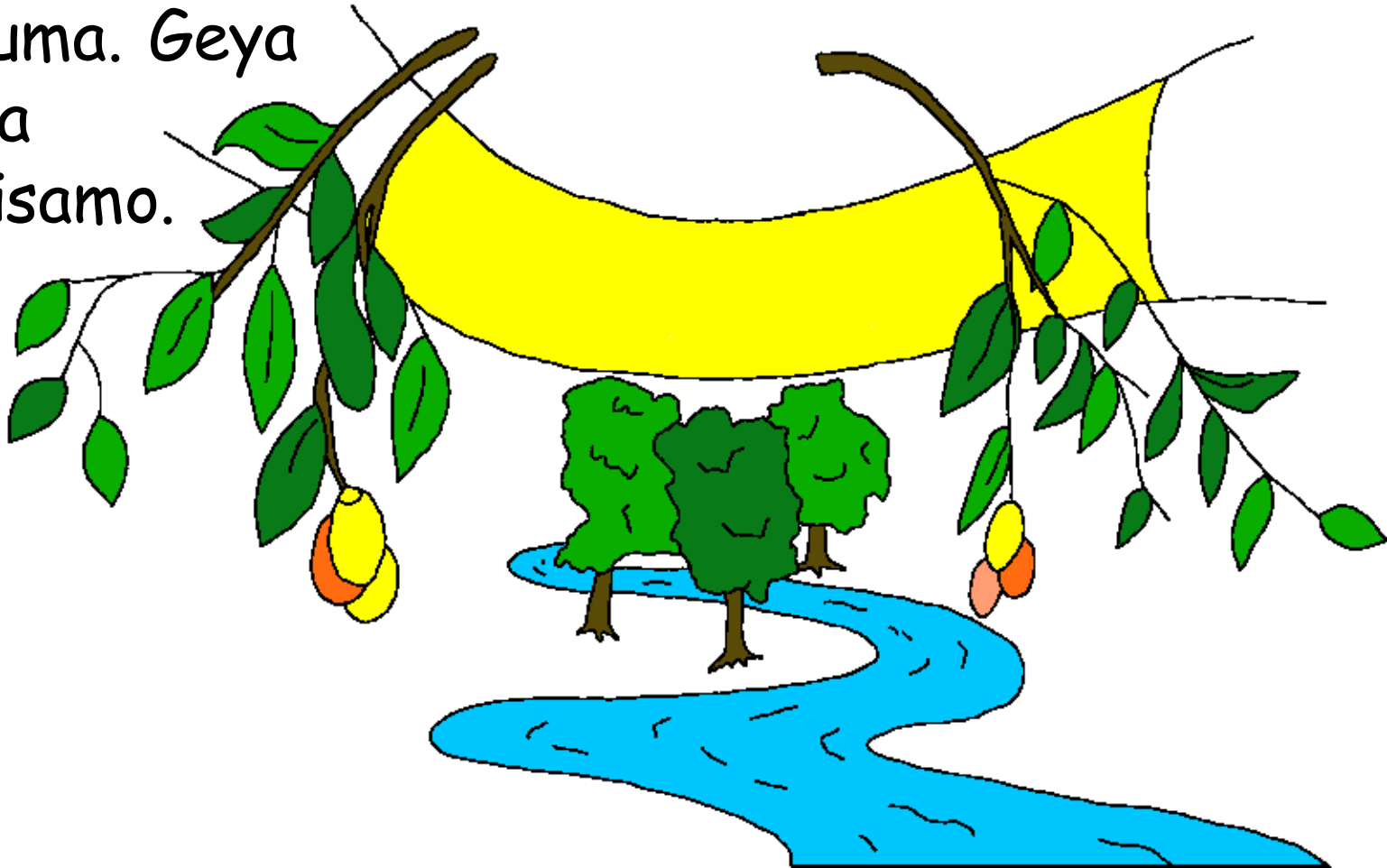
Ta hesi ginaula gala hedadedi 'abwa sisawala
'asaina 'oinega, ma Yehoba ta Lamiina 'idi
wagahata wasawasa 'oina simiyamiya, ma Lamiina
'ina topaihowao 'oina sipaihowa. Ma wete manina
si'ita, tauna sanina
manidiya.



Ma to'amasa mabwaiyadi ya'itediya, madoudi ta
'i'iudi, 'ebemiya wasawasaina matana sitotoholo, ta
buki 'iyahalidiya, ma 'aigeda wete buki 'iloyahaliya,
tauna yawasida 'ana buki, ta to'amasao 'iloinediya,
to'aha gide mumugadi lelelelena bukiyedi
'oidiya 'imiyamiya. Ma 'eguma taiyewedi
geya sanidi 'ilobaloba yawasida
bukina 'oina 'iuledi
'asa 'ala'alata 'oina.



Yaluyaluwa Tabuna ma tohai mewahinena sigwaeya,
"Wanaoma". Ma taiyawedi 'omi gwae bewa
wahesagoheya, 'omi wete wagwae, "Wanaoma." Ma
taudi tani'odi 'iyahala sinaoma, ma taiyawedi taudi
nuwanuwadi, nata yawasi we'ahina si'ewa, ma
sinuma. Geya
'ana
maisamo.



Comi tomiya
bale'u Yehoba
'ihelauwegomiya sinabwana, 'oinega
taugu natunaina 'aigeda tuwa 'itagwal
egauwa 'oimiya, ma 'oinega taiyawedi
'omi 'eguma wahemisaegau, geya
'abwa wahehesilae, ma hesi
yawasimi miyamiya
hatayana
waloba.



Loma 3:23 Weyahina mabwaiyada togala, ma tamiya
bwagabwaga Yehoba 'ina 'asilala 'oinega.

Loma 6:23 Weyahina pui 'ana maisa 'amasa, ma hesi
Yehoba 'ina helau beno yawasida miyamiya hatayana,
'ida Bada Yesu Keliso 'oinega.

Ibeliu 9:27 Tomota tauda 'ada lolina 'imiyamiya 'abehega
ma'aigeda ta'amasa ta muliyetega bwa'omatana.

Epeso 2:8,9 Moisa, 'ina 'eheleina 'oinega
'i'abihetegomiya 'imi hemisa weyahina ma geya waboi
'imi paihowa 'oidiyega, ma hesi Yehoba 'ina helau
'oinega. Cida 'abiheteina geya hene 'ida paihowa 'oinega
taloba, nata gide tanuwahane 'abehega tauda
tuwa 'ida waiwaiyega.



Loma 10:9,10 Ma 'abehega Yehoba 'i'etolemegita
'eguma 'ahwadega tatagwatagwala ma tagwae, "Yesu
'owa 'igu Bada", ma 'atedega tahemisa'e 'abehega
Yehoba Yesu 'i'abihe toholohileya 'amasega.
Weyahina 'atedega tahemiseya eeta Yehoba
'i'ahwa dumwaluwegita. Ta wete tahetohepwaila
weyahina, ma 'i'etolemegita.

Yoni 3:16,17 Comi tomiya bale'u Yehoba 'ihelauwegomiya
sinabwana, 'oinega taugu natunaina 'aigeda tuwa
'itagwalegauwa 'oimiya, ma 'oinega taiyawedi 'omi
'eguma wahemisaegau, geya'abwa wahehesilae, ma hesi
yawasimi miyamiya hatayana waloba.

Ta Yehobaina natunaina taugu 'ihesumanegauma
bale'uwa geya 'abehega yaloinaegomi, ma hesi yatauyama
'imi pui 'oidiyega sabi lemegomi.



1 Yoni 5:11-13 Ma 'ina hepwailaina 'abehega Natuna
'oinega yawasida miyamiya hatayana 'i'ebwaegita.
Ceguma taiya Yehoba Natuna 'oina 'imiyamiya, loheyaina
yawasina bwebwe'ana 'iloba pwaiya, ma 'eguma taiya
geya Yehoba Natuna 'oina, tauna geya.
Cimi leta bewa yalele pwaiyawa ma 'ane wasanasanapu
'abehega 'eguma Yehoba Natuna saninega
wahemihemisae, yawasimi miyamiya hatayana waloba.



Yoni 14; 2 Kolinita 5; He'ita'ita 4, 21, 22

Storyline by: Edward D. Hughes

Illustrated by: Lazarus
and Alastair Paterson

Adapted by: Sarah S.

Bunama Bible (bdd) © 1991, Wycliffe Bible Translators,
Inc. All rights reserved.

<https://live.bible.is/bible/BDDWBT/MAT/1>

©2024 Bible for Children, Inc.

www.M1914.org

www.bibleforchildren.org

