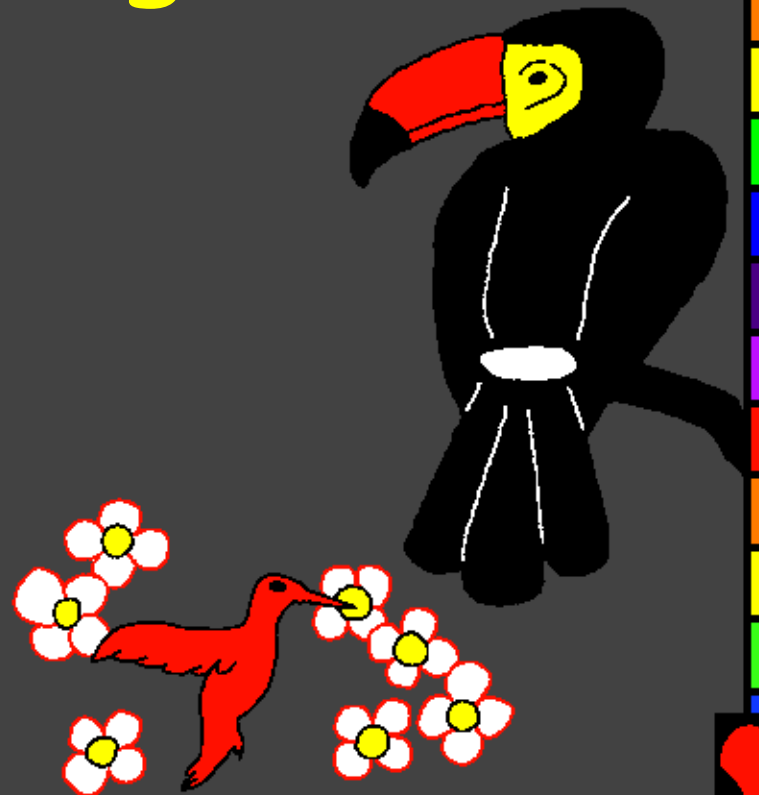
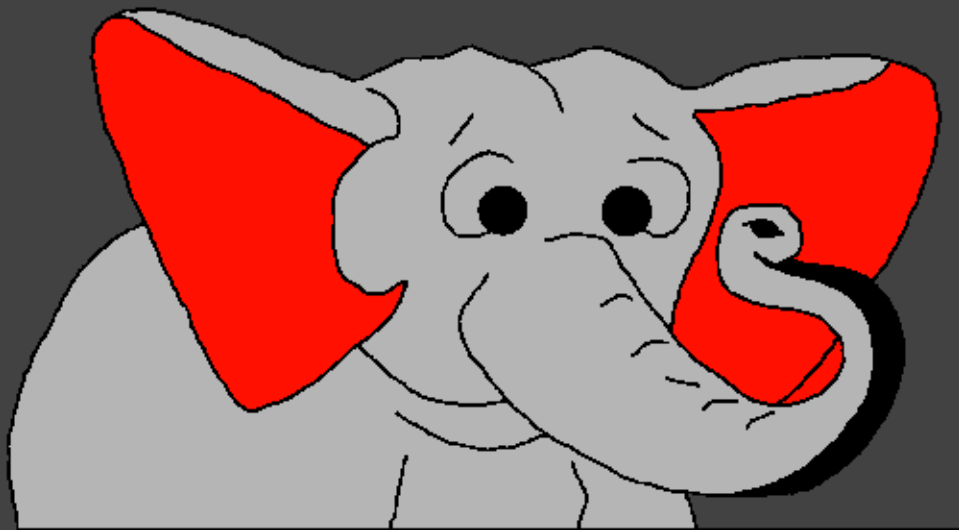
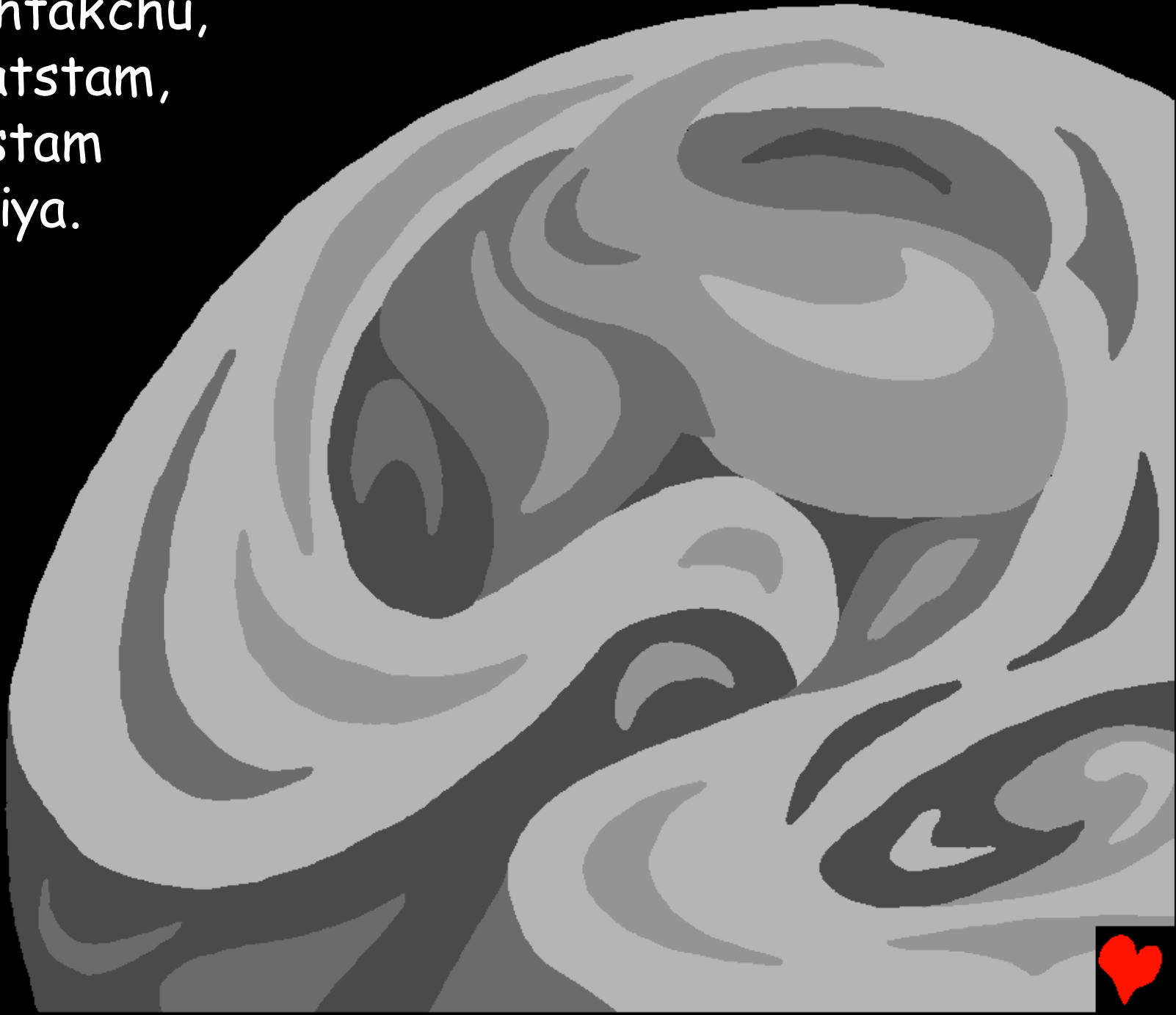


www.BibleForChildren.org

Apanll chtarangu 1



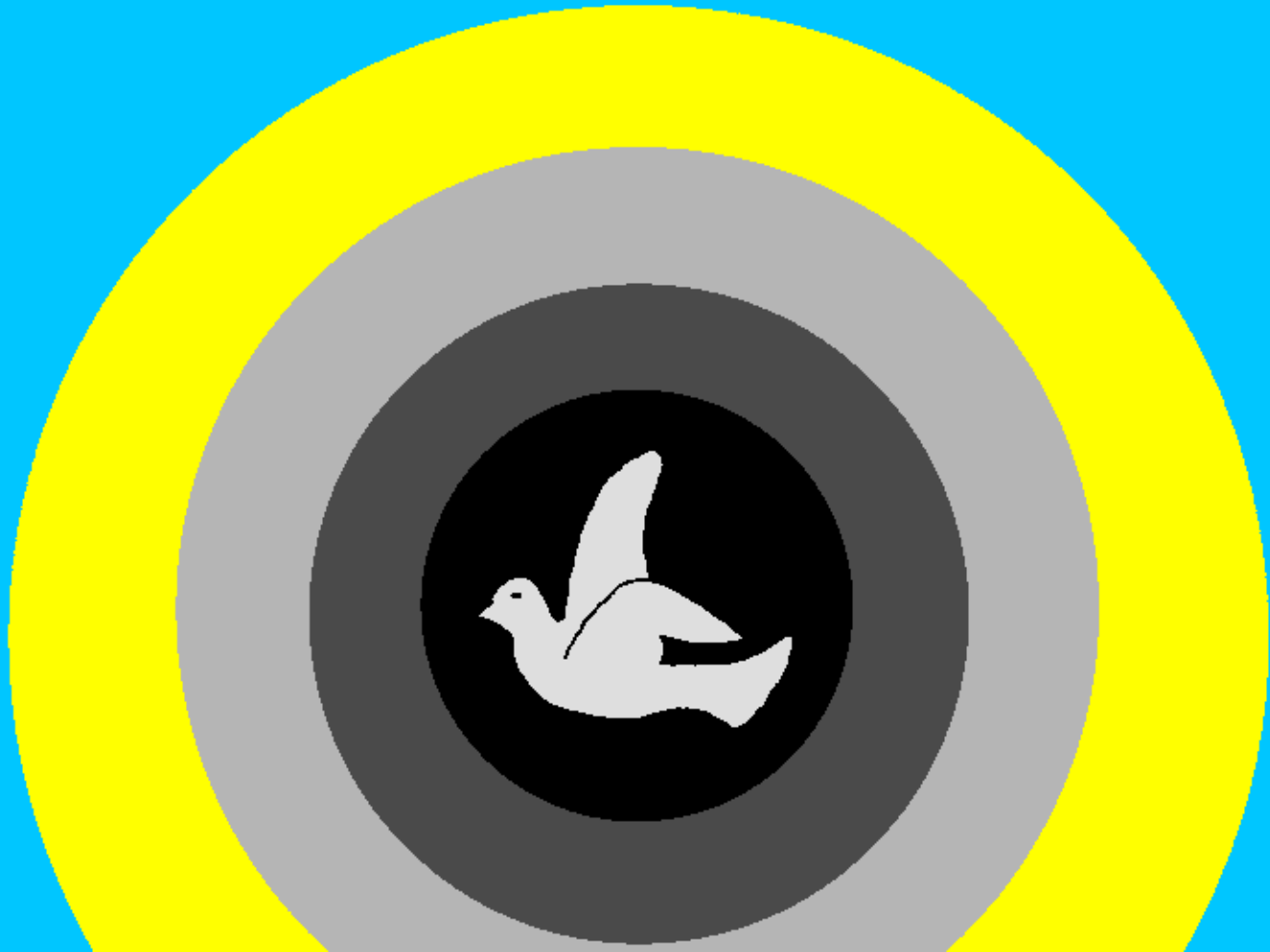
Apanll chtakchu,
kanindaatstam,
tsapootstam
tinarangiya.



Anpur zar tsap izuuru
ndunarimuna; kurimunazimuna.
Ichingaru kungunandamuna.
Mishat, izuuru tápimuna.
Itaru, kungumunsha
iwaz Apanll wani
mangamangtar
ashishtar ashku
ksutarangiya.



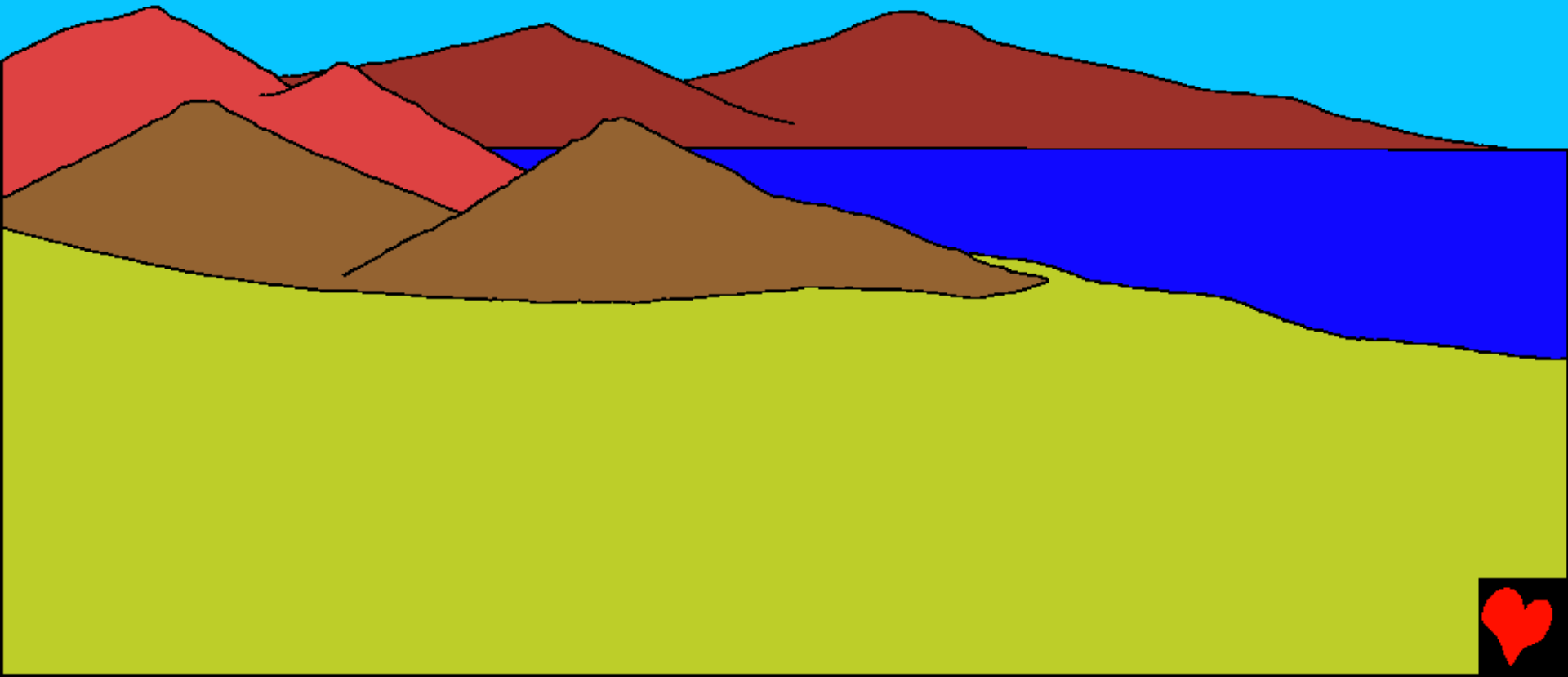
Mang Apanll tárangiya, 'Sineem taachpa, táyaru,
'sineerangiya. 'Sin kaschireem waani taachpa, mishat
tapi waani psaanaam taachpa, mang tárangiya. Anush
zar minumtarini tapitaranll ashirangiya.



Apanll mangush chinarangu, Waani íwar kung msas
tamapari ashiru taachpa; tsapushsha kung waanitam
taachpa, mang tárangiya. Anush tsimbunarini zar
tapitaranll mang ashirangiya.



Apanll tárangiya; Kungoo piyam waanitam wayachima.
Puzaatsha waanitam wayachima, táyaru, puzaa tsapu
átu ísamarangiya. Itaru, kungootsha mar átu
ísamarangiya. Ashiramchu, Apanll tsapoo, mishat
kungoo kis naparangiya. Kizpurcha wanasiri,
tárangiya.



Waanitam tsapumun mangina kxoonachpa; chirichir
waanitam kxoonachpa. Mangintam wanus waani
yusiyustanllpa; aranginasha pzapanichpa.
Chirichirtam wach arang
pzapanichtampa, tárangiya.
Anush tuchparini zar
tapitaranll ashirangiya.



Apanll tárangiya; Tsapoom tuwasineemaam zareewa wayachima. Waani kanindap zar, tsup, tsangach ashiru taachpa. Zar waani kaschireem 'sineemaam taachpa. Tsupsha psaanaam 'sineemaam achim taachpa, mang tárangiya.



Ashkachu, tputsha: Na zar
tatsam-eenltanda, táchpasinaya.
Na in tsup tatsumamaam
waritayanltanda.
Kanusamaamtam
tatsameenltanda.



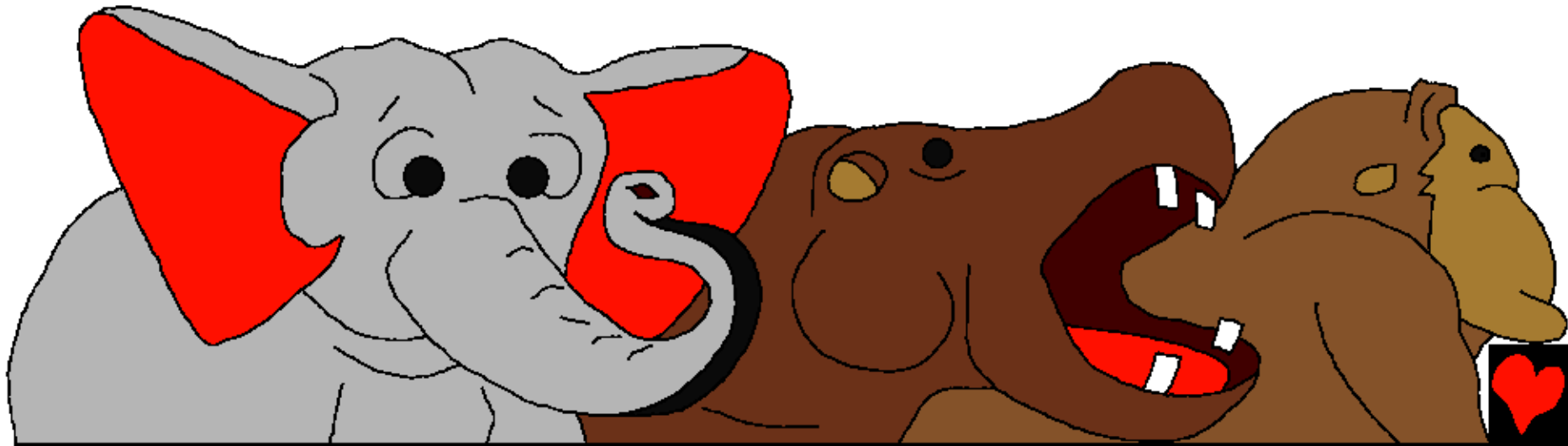
Na in masach amb ashtachinipa, tputs ayam
ántanchinaya, tárangu, Apanll anoom
zareewa wayarangiya. Ashchiri
ztaru kanindamand tsapurunasish
tuwasineemaam wayarangiya. Anush
ipunpunarini zar tapitaranll
mang ashirangiya.



Ashiriya, Apanll waani
kayupcheewaa kungush
taaratartanllpa.
Kpurangamashsha
waani yuwar
mangamangtanllpa.
Anush zar
zameetpatarini
tapitaranll mang
ashirangiya.



Apanll tárangiya; Waanitam maachi kayustaneew
tsapush taachpa. Chinuzeetsha waani tputs ksutku
taachpa. Mishat, tsapumun pshiyataru an waanitam
taachtampa, tárangiya.



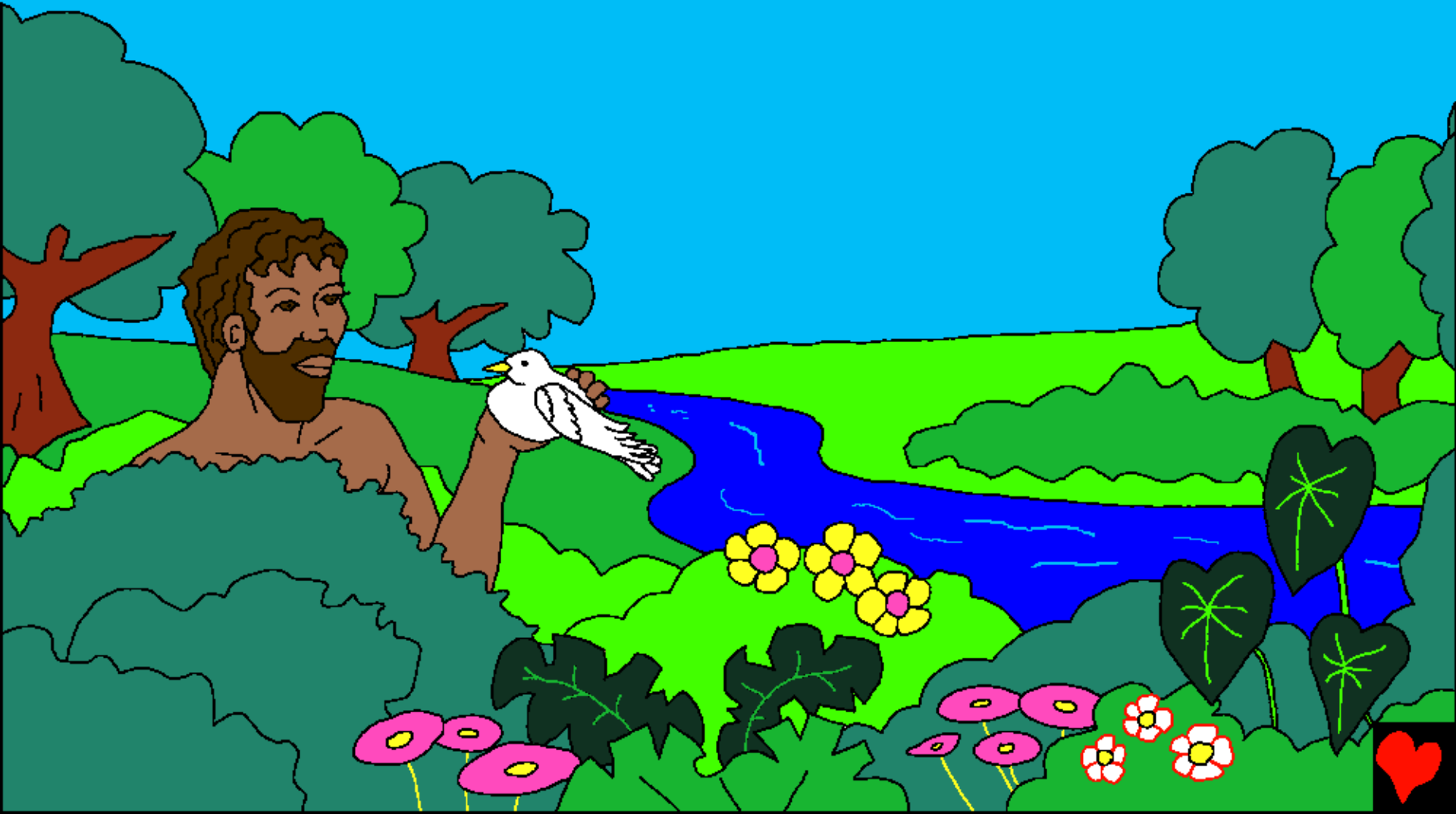
Maacheetsi tinamaam iwatsparamchu, anush Apanll
mangush chinarrangu, Na tputseemsha yaana tamapari
ashiritam tinayani, tárangiya. Waamari tputsimari
kurak tamapari ashiru ichingaroo kasiru taachiya.
Kungushcheetstamta,
manginshuchheetstam, chinuzee
chinutarich anootstam,
misha tsapush pshiyrataru
anootstam tputsimari
kasiru taachiya.



Waamari tputs mangurir kasikastachpa, tárangiya
Apanlli. Ashiriya, Apanlli amb ashiramchu, napku,
Ichingaru kizpurcha wanasirinanda, tárangiya. Anush,
minamtarini matayaru zar tapitaranllu,
tinamaam iwatsparangiya.
Putam tarasitaranll
mang ashirangiya.



Ashiriya, Apanllsha kamuzaa mzatsish Edengash wayarangiya. Shiy mzats ksutangcha, tárangiya.



Itaru waneeyaru:
Ichingaru wanus shiy
zandkush ktungangcha,
tárangiya. Itaru,
mzatsish apusanand
tatsumim taaru anoo
wanusi ktunginllpa. An
tsipatsimashtanda. Anoo
katungkachinaareesha,
urutamari tsiptatsha,
tárangiya Apanlli.



Tputssha zamzee, chinuzee, maachee
kayustaneew, manginshucheew,
kpurangamsheew, kayupcheew,
ashpa anoo ichingaru ísamarangiya.
Zamiz waani minamtawari sur
taachinllinpa, tárangiya.
Itaru, kamuzaamsha wipunasheem
wand ndunarimuna.



Ashiriya, Apanllsha kamuzaa tumachirtarangiya.
Tputsshat kizpur maramchu, anush Apanllshat tputsee
watandaram iwachirangiya. Watandaramaa iwacheeru,
kararamchu anoo yusursha
waanchichitam wanuts yáýaru,
tapatstarangiya. Yuwshat
kamuzaa watandaram yarangu
anootsshat kizaamshat
tinarangiya. Ashiramchu,
anush kamuzsha
támarangiya.
Apanllshat,
Neewa, shiyaam
ipunshish,
tárangiya.



Apanllsha tputsee tárangu: Ashiriya,
tputssha kamuz uruta waparee,
wanireetstam kasayaru, izuuru
wizanllpatamarisha minumaripaz
nutsas ashirusin taachinllinaya,
tárangiya Apanlli.



Na nuwsha anoo
yandakuri atina. Apanll Waanamand
Wip tputsee chinarangiya. Nda
kapeetamaam zandarangiya; tputsee
tapachindamaam zandarangiya.
Ashiruch waanaatsi wip
kamungshisheem
zanganirangiya.



Wip minamtaatastaa nda watsipunoom
pachindarangiya. Iy Wipamun mangini
tatkuni, ndusha waneeship naachiniya;
urutamari Apanlee taárash
payuchiniya. Taarasheetsini
kanatsipcheezini,
ndambaree.



Romshucheema 3:23 Anoo na siyaa kamankina. Tputsini ichinguruni yutaritanandani. ¿Chakaja Apanllpat tatsamooch? Nduncha. Ichinguruni pishtakaniya. Itaru, iy Isusumun mangini tatkinaareeni, Isusumand wamin Apanllsha iyaa yutaritshishirini izuurumamari kapeetarangiya.

Romshucheema 6:23 Itaru, tputs yutaritaatsimari chinaku an tsipakchu, waana yachchiya. Itaru, Apanll iyaam taarashshee mangutari panakiya. Yuwamand Isusoo mangoonkini anumand taarashshee urutamash panakiya. Ashirucha, yutaritshishee izuuru watsta tángtsa; nuw siyaa táshina.

Utaáshucheema 9:27 Iy tputsini tsipakchuni, yuwaa tputs Apanllee nda chinaku anoo Apanllsha wanichiya.



Ipísshucheema 2:8,9 Ashiriya, Apanll waana zandeeru, iy nduntaa Apanlee chinaruni taakuni, ashiritaa Isusoo zanganirangiya. Iyshacha Isusumun mangini tatkuni, Apanllsha iyaa mangutari tapachindakiya.

¿Nitaati yaanamuntaja wizpuririni kamungchini? nda.

Waanari tputs: Yuwamunari nuw wanasir taaki anumunaripa nuwaa tapachindachiya atinaariya, ¿tamaree anumun tapachindach? Isusumunaritcha tapachindachiya.

Romshucheema 10:9,10 Chiy waanari: Isusoo nuw Kurakartana. Isus tsiparangitaa, itaru Apanllshacha nuwaam yutaritshishiri tapachindamaam ituyamarangasha, zurumarpatich chiy atinaareechi ashiru, chiy na kamungamtichcha. Ashiri mangishich mangoonkuch, k'kiptich tputsee kamaneeruch, Apanllsha chiya kis napchiya; chiya tapachindachiya.



Wangarini 3:16,17 Na nuwsha anoo yandakuri atina.
Apanll Waanamand Wip tputsee chinarangiya.
Ndakapeetamaam zandarangiya; tputsee
tapachindamaam zandarangiya. Ashiruch waanaatsi wip
kamungshisheem zanganirangiya. Wip minamtaatstaa nda
watsipunoom pachindarangiya. Iy Wipamun mangini
tatkuni, ndusha waneeship naachiniya; urutamari
Apanlee taárash payuchiniya. Taarasheetsini
kanatsipcheezini, ndambaree.



1 Wangarini 5:11-13 Itaru, Apanll zurku atiya. Taarashish urutamash Apanll iyaam panarangiya. Wipamunarisha taarashish iyaam panatariya, watam waana atuwa. Ashiri tputs Apanlee Wip mangoonku, taarashshee urutamash payukcha. Itaru, tputs nda Apanlee Wip mangoonku, taarashshee nduntam payukiya. Yuwamis siy Apanllimun Wip mangis tatkis anoomis kamankina. Taarashshee urutamashi izuuru payukina tápana aturi, siyaam yandakina. Ashiruch Isusootsim Apanlee Wip chinangtsa siyaa táshina.



Apanll chtarangu 1-2

Storyline by: Edward D. Hughes

Illustrated by: Byron Unger, Lazarus
and Alastair Paterson

Adapted by: Bob Davies; Tammy S.

Candoshi-Shapra Bible (cbu) © 2010, Wycliffe Bible
Translators, Inc. All rights reserved.

<https://live.bible.is/bible/CBUWBT/MAT/1>

©2024 Bible for Children, Inc.

www.M1914.org

www.bibleforchildren.org

