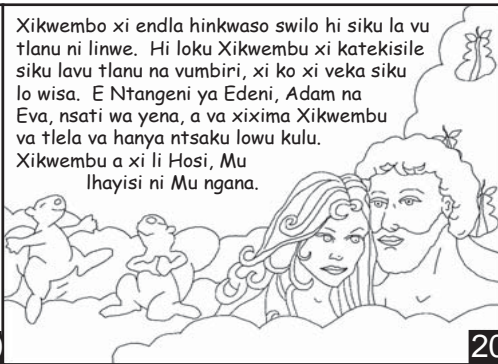




Xikwembo xi endla Adam a yetlela vurongu lebyi kulo. Xi ko xi susa limbambu la yena, Xikwembo xi endla wa nsati, hi limbambu la Adam. Wa nsati lweyi a endliweki he Xikwembo ava mupangalati lwe nene wa Adam.

19



Xikwembo xi endla hinkwaso swilo hi siku la vu tlanu ni linwe. Hi loku Xikwembo xi katekisile siku lavu tlanu na vumbiri, xi ko xi veka siku lo wisa. E Ntangani ya Edeni, Adam na Eva, nsati wa yena, a va xixima Xikwembo va tlela va hanya ntsaku lowu kulu. Xikwembo a xi li Hosi, Mu lhayisi ni Mu ngana.

20

Loko Xikwembo Xi Tumbuluxile Swilo Hinkwaswo

Xitori lexi ya Rito la Xikwembo, Bibe, xi kumeka ka

Genesa, cap. 1-2

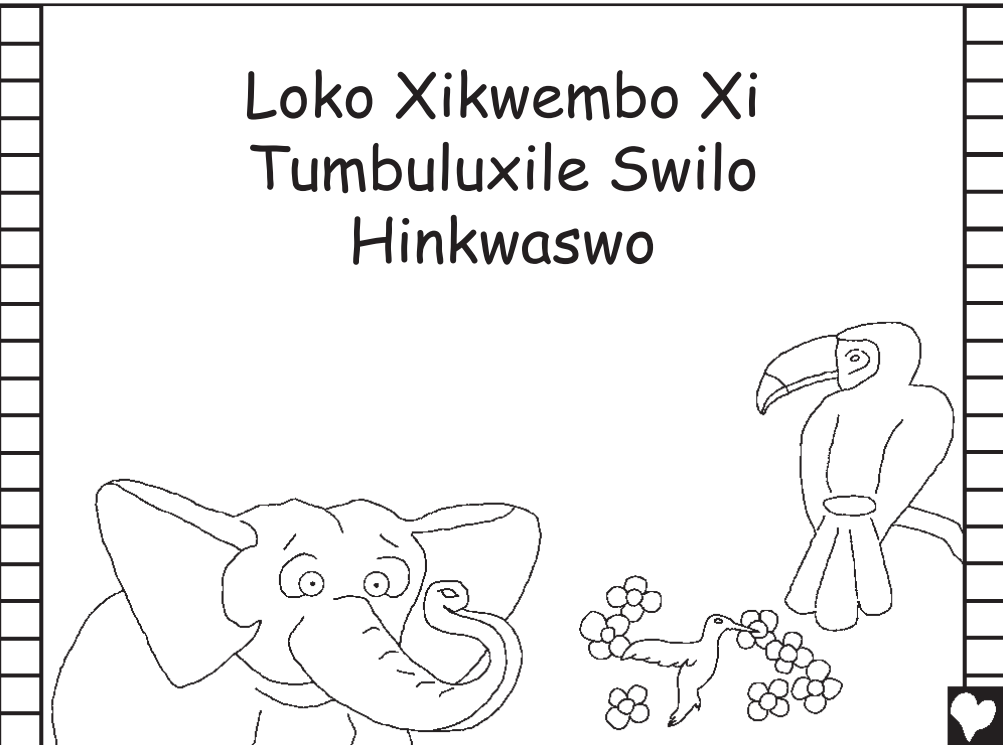
"ku tlhamusela ka rito la Wena ku tisa livhoningo." Tipsalma 119:130

Xikwembo xa swi tiva leswaku hina ha endla swilo swo biha, leswi vitaniwaka xidzoho. Ku khatisiwa ka xidzoho i lifu, kambe Xikwembo xa ku randza ngopfu xi ko xi rhumela nwana wa xona wa unwe, Yesu, leswaka a fa xihambanweni ako a hakela minandzu ya hina. Yesu o tlhele a hanya ako a famba kaya ka yena paradisini.

Loku u swi lava ku tshunseka e swi dzoweni swa wena, tlhamula e matlheni ka Xikwembo u ku: Murhandziwa Yehova mina ndza pfumela leswako yesu undzi felile na kambe swoswi wa hanya, kombela u ngena e vutonwini bya mina u rivalela swidzoho swa mina, leswaka ndzi ta kuma vutomi le byintsha, ndzi tlhela ndzi hanya swinwe na Wena siku li nwana hi laha kunga helike. Amem. Yohane 3: 16

Dzondza Bibe u tlhela u vulavula na Xikwembo masiku hinkwaho!

Changana



Loko Xikwembo Xi Tumbuluxile Swilo Hinkwaswo

Mutsali Edward Hughes
Yi kombisiwa hi Byron Unger; Lazarus

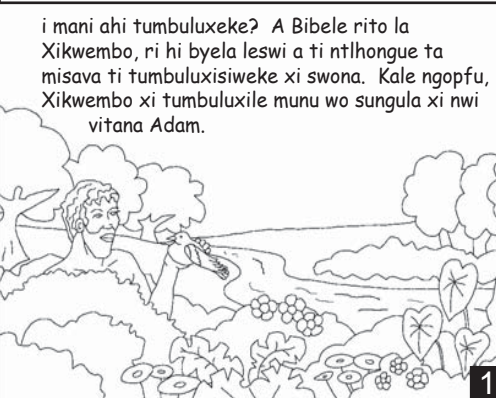
mu tholoki Fernando Salvador Mbalane
mu tlhambi Bob Davies; Tammy S.

Xitori xa 1 kuya ka 60

M1914.org

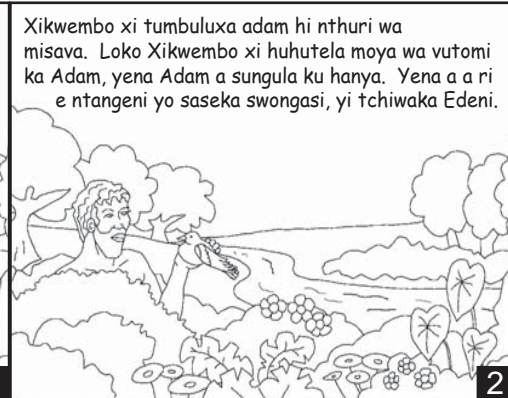
Bible for Children, PO Box 3, Winnipeg MB R3C 2G1 Canada

Ku pfumeleliwa: Wa pfumeleliwa ku copiya hambi ku printa, xitori lexi, ntsena a wu pfumeleliwa ku xavisa.



i mani ahi tumbuluxeke? A Bibe rito la Xikwembo, ri hi byela leswi a ti ntlhongue ta misava ti tumbuluxisiweke xi swona. Kale ngopfu, Xikwembo xi tumbuluxile munu wo sungula xi nwi vitana Adam.

1



Xikwembo xi tumbuluxa adam hi nthuri wa misava. Loko Xikwembo xi huhutela moya wa vutomi ka Adam, yena Adam a sungula ku hanya. Yena a a ri e ntangani yo saseka swongasi, yi tchiwaka Edeni.

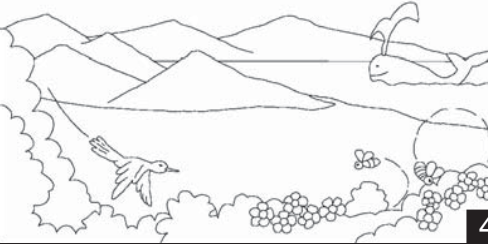
2

loku Xikwembo xi nga si endla Adam, Xona xi endlile misava yo saseka ni swilo swo lhamalisa. Xikwembo xi endlile xilo xinwana ni xinwana, tintsava ni tindahu to twililika, mafiloni yo nunwela ni minsinya yo leha, tinyanyana ta tipapa to phatima, tinyoxi ni ku nunuwuta ka tona.



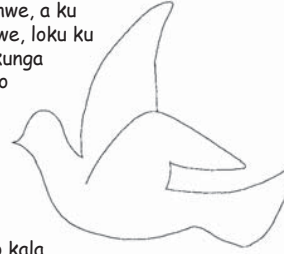
3

Mabaleya yo lhambela e lwandle, tihovo to retemuka. Kuneke, Xikwembo xi tumbuluxile swilo hinwaswo swi swinga kona - hinkwaswo.



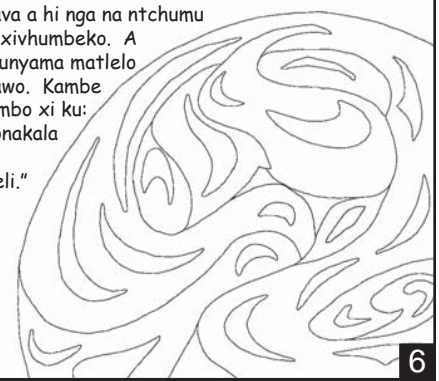
4

Eku sunguleni, loko Xikwembo xi ngasi endla xilo ni xinwe, a ku nga na tchumu ni xinwe, loku ku ngari Xikwembo. A kunga na vhanu, hanbi ndaho ni yinwe. Ni xinwe. Hambi livoningo kumbi munyama. Aku nga na tchumu hambi le hentla kumbi hansu. A kuna Xikwembo ntsena, xo kala masangulo. Se Xikwembo xi sangula ntiru. E ku sunguleni Xikwembo xi ntumbuluxile tilo ni misava.



5

A misava a hi nga na ntchumu hambi xivhumbeko. A kuni munyama matlelo hinkwawo. Kambe Xikwembo xi ku: "Kuvhonakala a ku humeleli."



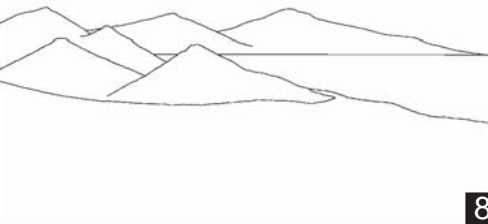
6

hi loku ku vonakala ku humelela. Xikwembo xi tshya ku vonakala siku, ni munyama xi tshya vusiku. Ku va ni vusiku ni mixo swi ko swi tshyiwa siku lo sungula.



7

hi siku la vumbiri, Xikwembo xi endlile mati ya lwandle, ni matchombi henha ka misava. Hi siku la vunharu, Xikwembo xi ku, "a ku ve ni ndahu yo woma e misaveni." Hi nomu wolowu swi humelela.



8

Xikwembo xi tlela xi lerisa leswaku byanyi, mafiliri, ni ntanga, ni minsinya swi humelela. Hi nomo lowu swi swi humelela. Ku va ni vusiku ni mixo swi ko swi tshyiwa siku la vunharu.



9

Se Xikwembo xi endla dlambu, nwati ni tinyeleti to tala, leswaku ni unwe anga kota kota. Ku va ni vusiku ni mixo swi ko swi tshyiwa siku la vu mune.



10

swi vhumbeko swa landle, swi dlhiani, ni tinyanyani hi leswi swi nga ha landzela e ka ku endla ka Xikwembo. Hi siku lavu tlanu Xikwembo xi endlile xidliwani le xi kula xi vitiwaka vamba, ma sardiniya lawa matsongo, ti yintcha ta milengue yo leha, nyanyana yo kisa mafiloni.



11

Xikwembo xi endla mi xaka hinkwayo ya swidliwani leswaku yi hanya matini ni mi xaka hinkwayo ya tinyanyana leswaku yi hanya misaveni, tilweni ni lwandle. Ku va ni vusiku ni mixo swi ko swi tshyiwa siku la vu tlanu.



12

E ku hundzeni ka swilo leswi, Xikwembo xi tlela xi vulavula. Xikwembo xi lerisa leswaku misava yive ni swi hanyanyana. Hinkwayo minxaka ya swi hari, swi hanyanyana leswi tsongo ngopfu, ni ti repteli swiva swili kona. Ma elafanti lawa makulo, swi hari tchela tchela. Tihavu to lutla, ni tingunya to kariha. Swinyanyana swo puruma, ti girafa to leha, ni swi ngove swo tlariha. Hinkwayo mi xaka ya swi hari I endliwile hi Yehova Xikwembo siko lelo. Ku va ni vusiku ni mixo swi ko swi tshyiwa siku la vu tlanu ni linwe.



13

Xikwembo xi endlile tchumu unwana hi siku la vu tlanu na linwe, xilo xo saseka swongasi, hinkwanswu aswi lulamiselwele muni. A kuni swakudja e ntangeni, ni swi hari leswaku swi tirela muni.

Xikwembo xiku, "a hi endleni muni hi xivumbeko xa hina. A ve a fuma swilu hinkwasu swa misava."



14

HILAHA XIKWEMBO XI ENDLEKE MUNU HI XIVUMBEKU XA XONA; HI XIVUMBEKU XA XONA XIKWEMBU XI NWI ENDLA ...



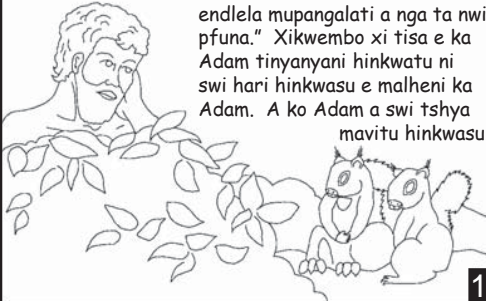
15

Xikwembo xi ku ka Adam: "Djana xinwana ni xinwana u xi lavaka e ntangeni, ntsena unga tsuki udja a handzu wa ku tivhisa leswi nene ni leswo biha. Loku u tsuka udja handzu lowu, kuneni u ta fa."



16

Xikwembo xi ku: "a swi sasekanga leswaku muni a tsama a li swakwe. Ndzi ta nwi endlile mupangalati a nga ta nwi pfuna." Xikwembo xi tisa e ka Adam tinyanyani hinkwatu ni swi hari hinkwasu e malheni ka Adam. A ko Adam a swi tshya mavitu hinkwasu.



17

Swi lavile vutlari likulu e ka Adam ku endlile hinkwasu leswi. Kambi henlheni ka tinyanyani ni swi hari swo tsama ni muni hambi swo tsama novena, a ku nga ni xinwe xi nga ha fanela ku hanya na Adam.



18