

www.BibleForChildren.org



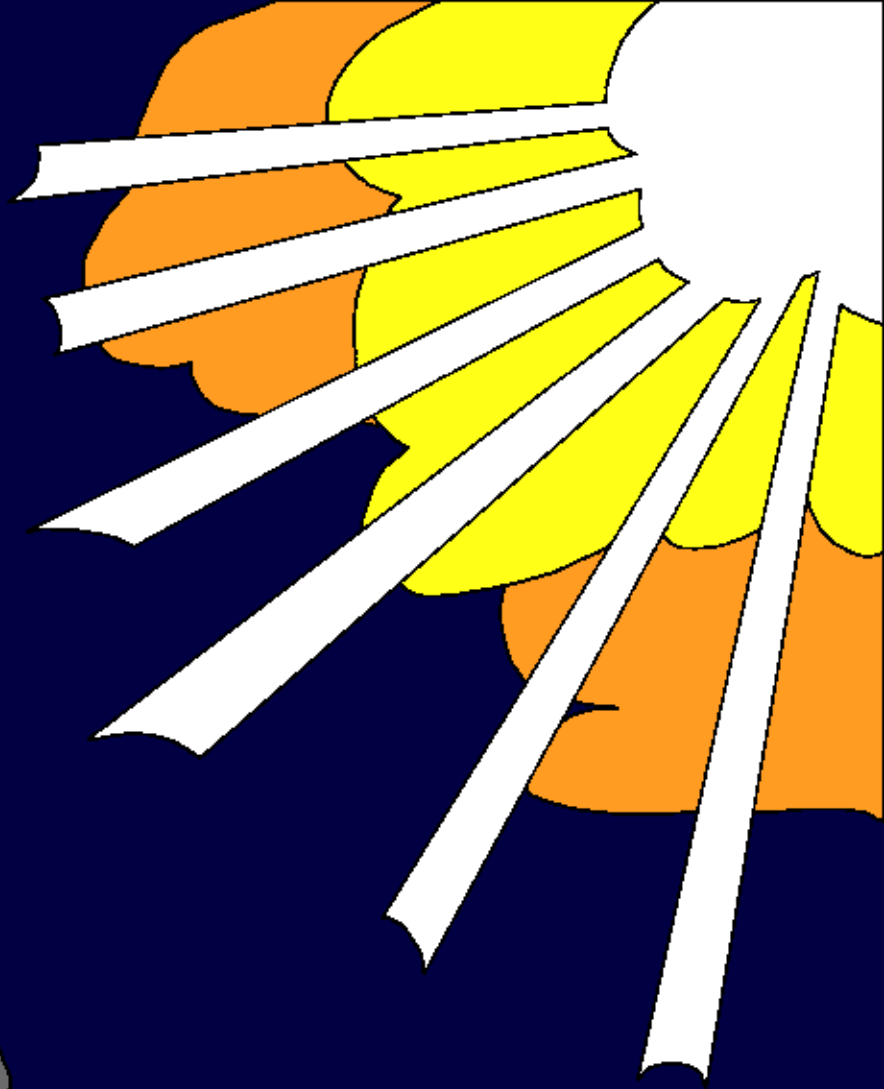
Génesis 6



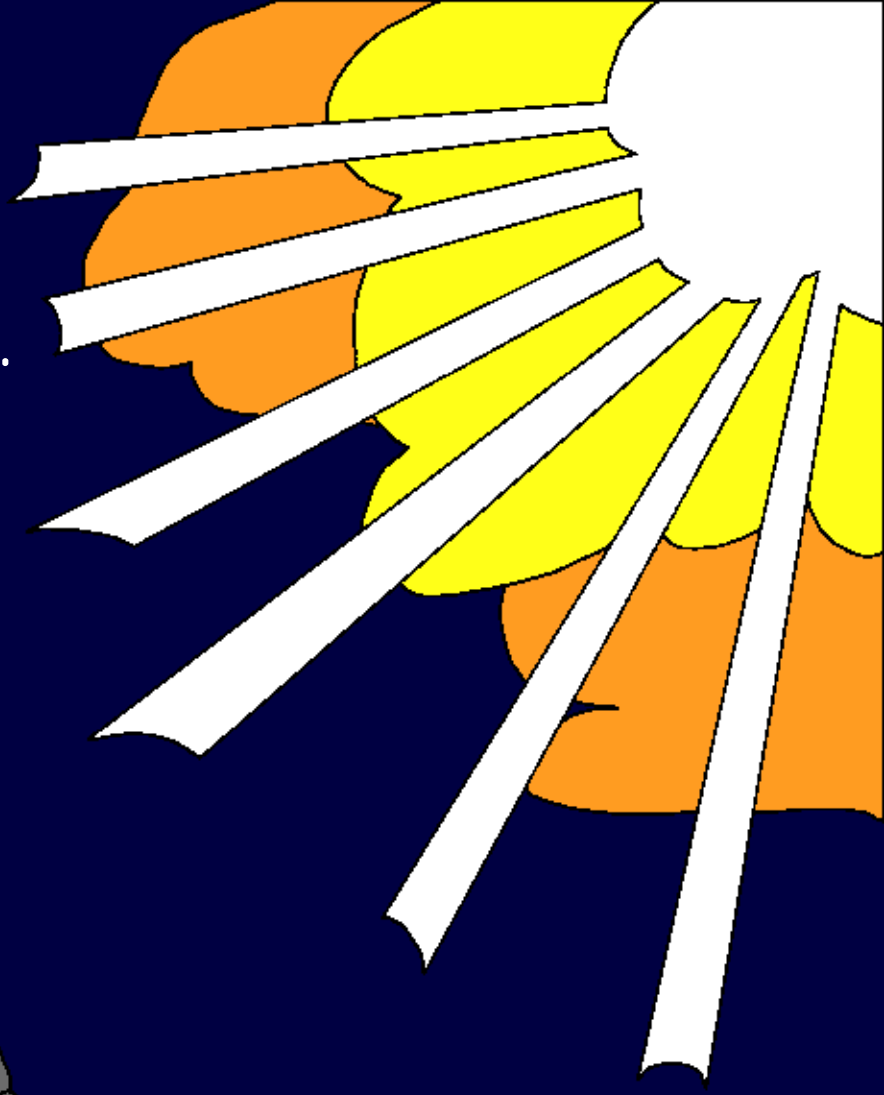
Noé nāga bapachi. Noé t'āri
pia bapachi. Oopachi Tachi
Ak'ōrepa oopi bik'a.

Apemaarā iru ik'aawa
p'anapatap'edaarāpa audú
ne–inaa k'achia oopachida

mīda, irua māga
ook'aa
paji.



Tachi Ak'õrepa k'inia bik'a
oopachi. Eperãarãpa ne-inaa
k'achia k'ĩra t'ãdoo oo
wãpachida, k'ĩra nejasiada-ee.



Māga unuk'āri, Tachi Ak'ōrepa Noemaa
māgaji: —K'īsia iru bida aji, eperāarā
jōt'aait'ee, na p'ek'au eujāde ne–inaa audú
k'achia oomaa p'anadairā. Maperāpi
na p'ek'au eujā jōmaweda
jōt'aait'eeda aji.



Pi, pichideerã ome madeepa chok'ai
uchiadamerã, barco waibia oopáde aji.
Ma barco nãga oopia bi. Pak'uru k'ayoo
k'arak'araa jirripia bi. Mãgee pak'urudee
barco ooit'ee. Ma pak'uru jirriipa
soopia bi taawaik'a eere mãik'aapa
edajãare. Ichiaba
barco edajãde
cuarto oopia
bi.



Nāga ooipia bī chi waibia:
ciento treinta y cinco
metros chi teesoo;
veintidós metros
ap'eda waa
metro

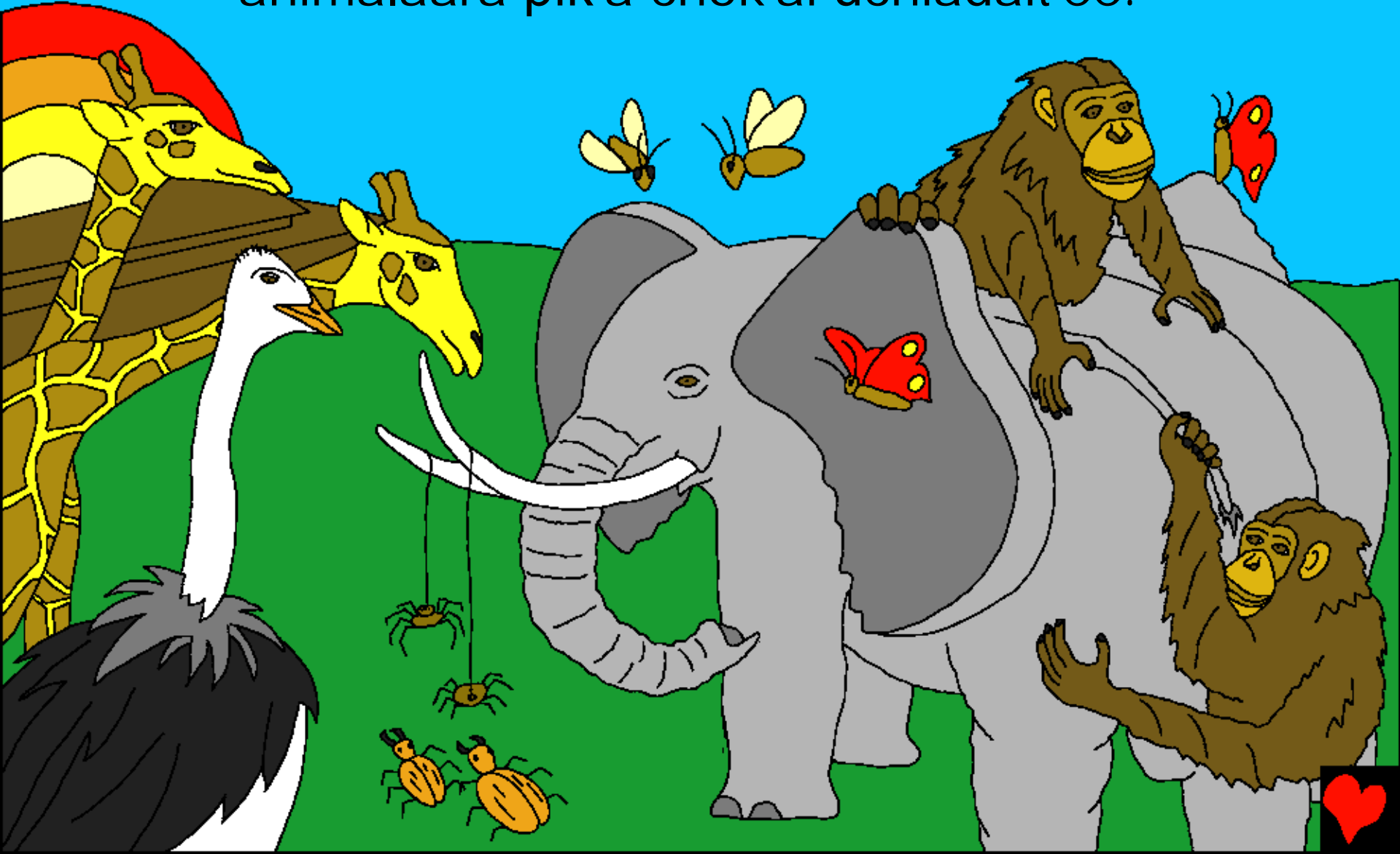
esa–auk'a chi
jobia; trece
metros ap'eda waa
metro esa–auk'a chi it'ia.



Chik'o p'epáde aji, parāpa
māik'aapa ma
ne-animalaarāpa
k'odamerā barcode
p'anaruta misa.



Ichiaba ne-animal chaachaadepema pia barcode
ateeit'ee; chi imik'ira, chi wera ome. Maga ne
-animalaara pik'a chok'ai uchiadait'ee.



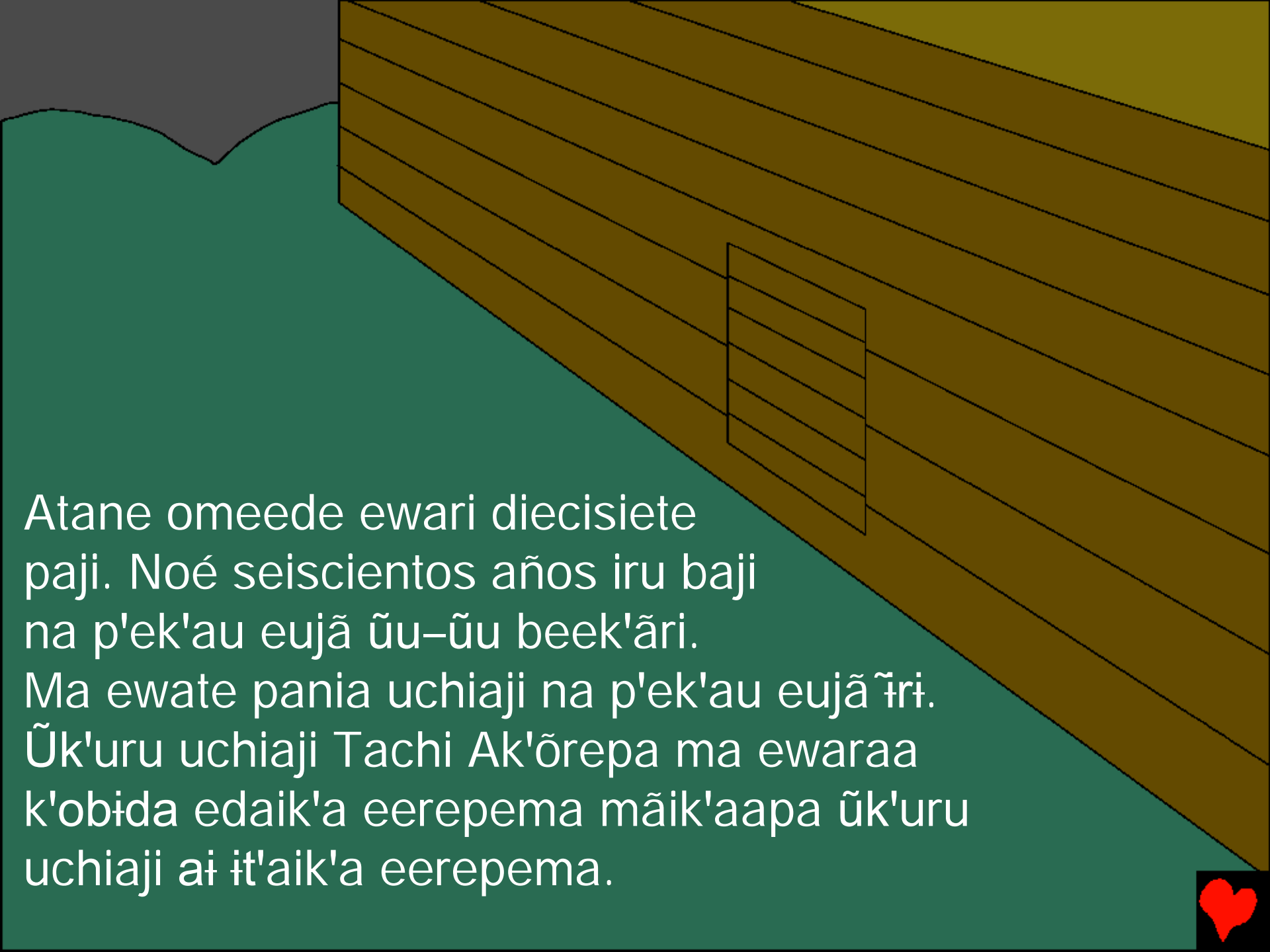
Ne-animalaarã mi-it'ee paapata chi
imik'ira siete, chi wẽra siete
atéeji. Chi apema ne-animalaarã
chi imik'ira aba, chi wẽra aba
ateeipia bi.





K'oi che nĩbeek'ãri,
barcode t'ĩuk'oodachida
Noé, chi wẽra mãik'aapa chi
warrarã, ãchi wẽraarã ome.





Atane omeede ewari diecisiete
paji. Noé seiscientos años iru baji
na p'ek'au eujã ũu-ũu beek'ãri.
Ma ewate pania uchijaji na p'ek'au eujã ãri.
Ũk'uru uchijaji Tachi Ak'õrepa ma ewaraa
k'obida edaik'a eerepema mãik'aapa ũk'uru
uchijaji ai it'aik'a eerepema.





K'ãima cuarenta k'oi che nĩbaji n
a p'ek'au eujãde.



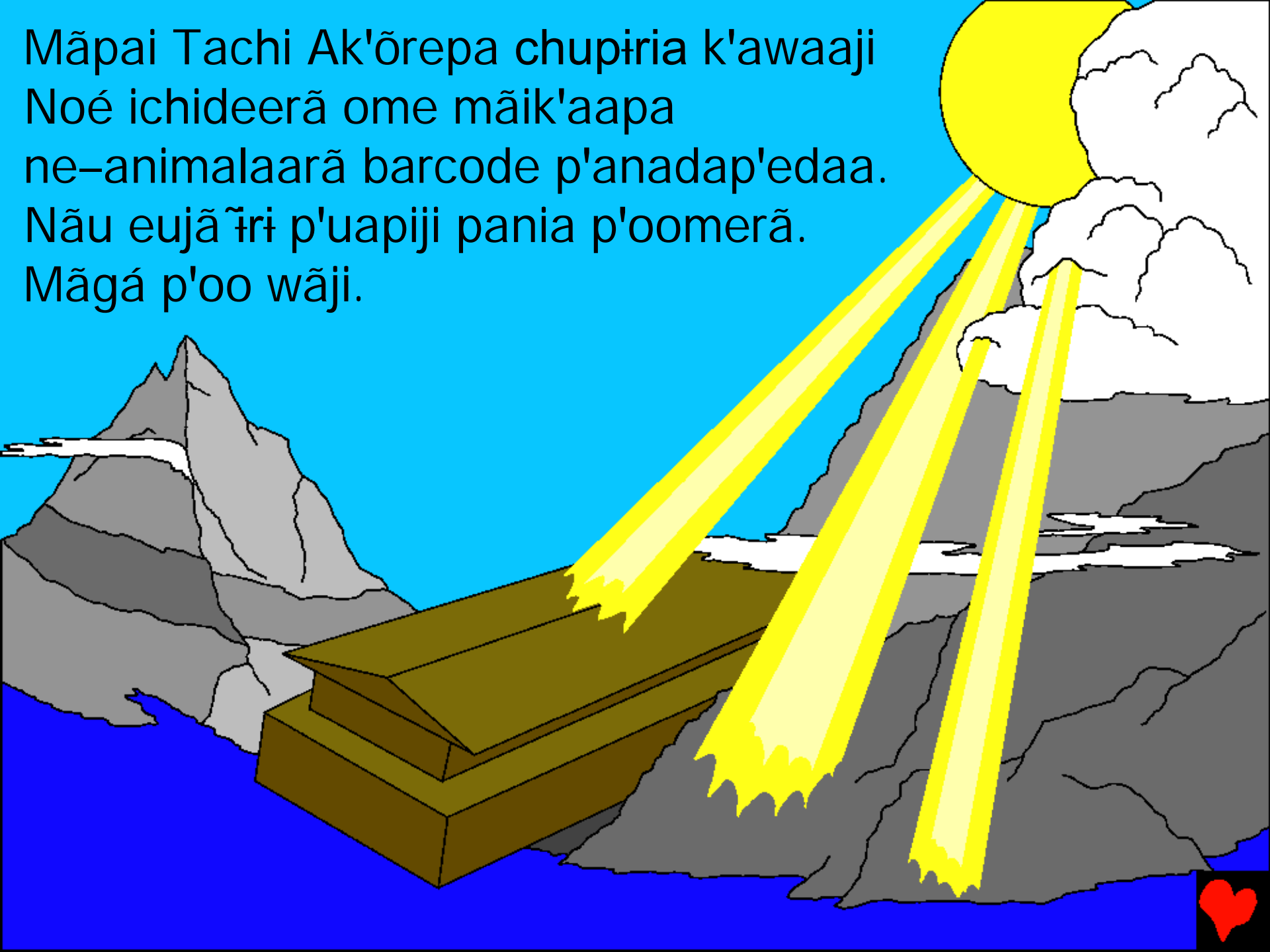
Waapiara ũu chewãji. Mamĩda
ma barco k'ãiwee bai ũu beeji.



Pania ũu chewãta, ũu chewãta, ee it'ïara beeda
k'ãyaara it'ïpiara ũu-ũu beeji. Jõmaweda na p'ek'au
eujãdepema chok'ai p'anapatap'edaa piujida.



Māpai Tachi Ak'ōrepa chupiria k'awaaji
Noé ichideerā ome māik'aapa
ne-animalaarā barcode p'anadap'edaa.
Nāu eujā ĩri p'uapiji pania p'omerā.
Māgá p'oo wāji.





K'ãima cuarenta parumaa
Noepa chi ventana
ewat'aaji. Ma t'ẽepai Noepa
pëiji paloma k'awaait'ee eujã
p'oo bi maa-e pirã p'oo-e bi.



Atane omeede ewari veintisietede eujā pia p'oo beeji.
Māpai Tachi Ak'õrepa Noemaa māgaji: —Uchiapāde
aji, barcodeepa pī wēra, pī warrarā
pī āiguurā ome.



Ai t'ēepai Noepa altar
māudee ooji Tachi
Ak'ōre-it'ee. Māpai
ataji ne-animalaarā
māik'aapa ipanaarā
Tachi Ak'ōre-it'ee
paapatadepema; māgee
k'īra chaadepema aba.




Māpai ma ne-animalaarā
peep'eda, paa jōji
ma altarĩri Tachi
Ak'ōre-it'ee.



'Nāgá parāpa
māik'aapa
ne-animalaarā
jōmaarāpa k'awadai
mīa wāarata jara bi.
Euma biit'ee pajāde mīa

jarada k'irāpa
p'anadamerā.





Mia eujã ãri
jãrara pëik'ãri,
aide eperãarãpa
euma unudait'ee.

Mia mãgĩ unuk'ãri,
k'irãpait'ee mia pacto ooda
parã ome mãik'aapa

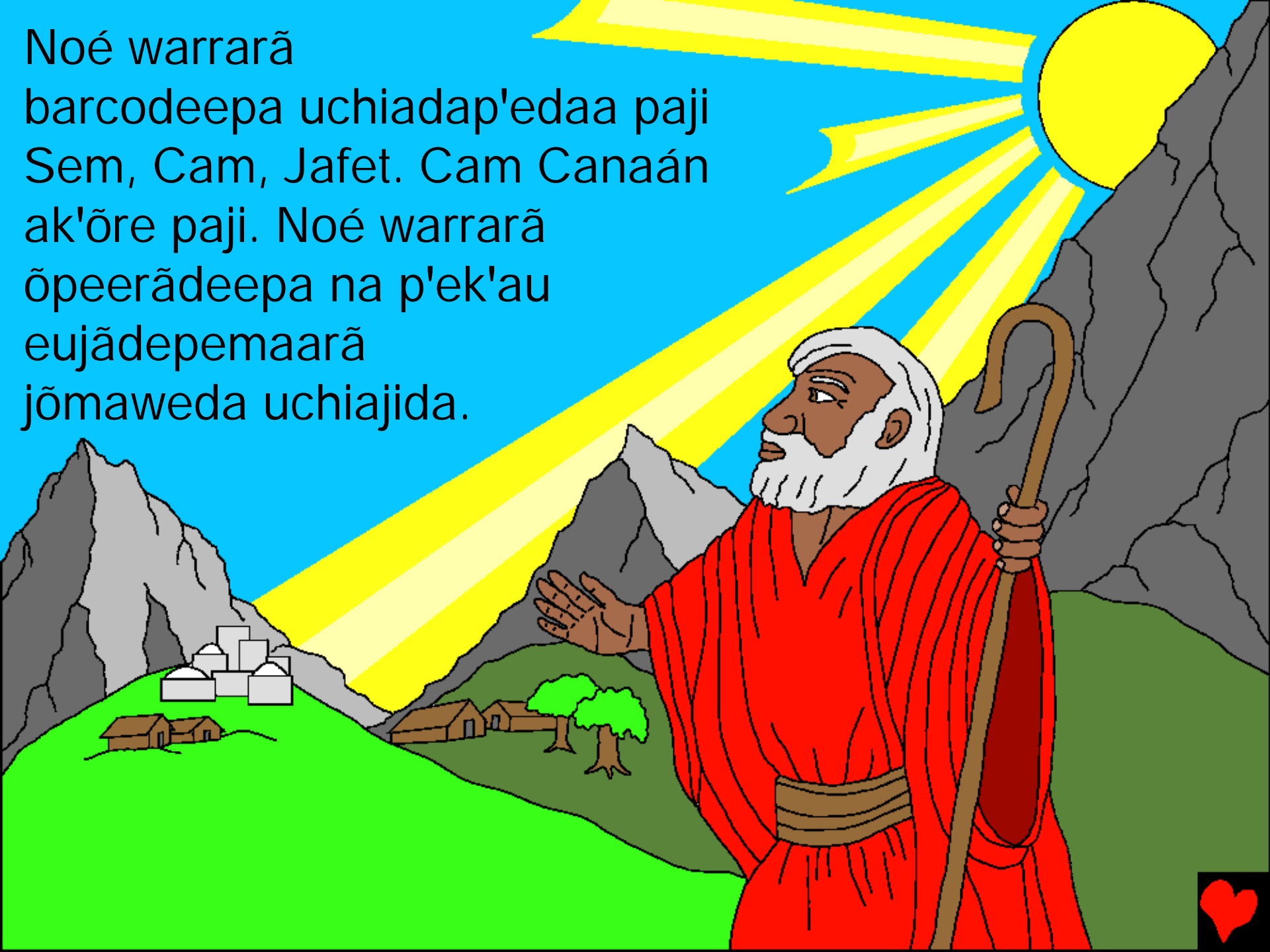
ne-animalaarã ome;
eujã paniapa
ũut'aadak'a waa
oo-e pait'ee.



Māpai Tachi Ak'ōrepa
pedee pia jaraji Noemaa, chi
warrarāmaa paara: —Warra
chok'ara oodapáde aji. Wādapáde
aji, chi wārutamaa na p'ek'au
eujāde, eperāarā
chok'ara paraamerā.



Noé warrarã
barcodeepa uchiadap'edaa paji
Sem, Cam, Jafet. Cam Canaán
ak'õre paji. Noé warrarã
õpeerãdeepa na p'ek'au
eujãdepemaarã
jõmaweda uchijida.



—Tachi Ak'õrepa na p'ek'au
eujãdepemaarã audú k'inia iru bada
perã, ichi warra apai iru bada pëiji
piumerã eperãarã pari. Eperãpa
iru Warrade ijãa bi pirã, atua-e.
Jai-idaak'ãri, Ak'õre
eujãde banait'ee.



Romanos 3:23 Jōmaarāpa p'ek'au k'achia oopata. Eperā
apida wē–e wāara ne–inaa jōmaweda oopari
Ak'ōrepa oopi bik'a.

Romanos 6:23 Wāara p'ek'au k'achia oopataarā piudak'āri,
atuadait'ee. Mamīda Cristode ijāapataarā it'aa wādait'ee
māik'aapa ichita p'anapataadait'ee Tachi Waibia Jesucristo
ome, Tachi Ak'ōrepa māga k'inia bairā.

Hebreos 9:27 Eperā chaa piuda aba piut'ee. Maap'eda
Tachi Ak'ōrepa ak'iit'ee ma eperāpa pia maa–e pirā k'achia
ooda na p'ek'au eujāde bi misa.

Efesios 2:8,9 Maperāpi parā Cristode ijāadak'āri, Tachi
Ak'ōrepa parā o k'achiadeepa k'aripa ataji atuanaadamerā.
Pāchi k'īradoopa ma o k'achiadeepa p'oyaa uchiada–e paji.
Tachi Ak'ōrepapai eperāarā madeepa uchiapii.



Eperãarã ãchi k'ĩradoopa madeepa uchiada paara, mãgak'ajida: "Tachia pia oopata k'aurepa Tachi Ak'õrepa k'aripaji." Mamĩda mãga-e. Tachi Ak'õrepapai tachi ijãapataarã mãgá o k'achiadeepa k'aripa atapari, apida pedee audua pedeenadamerã.

Romanos 10:9,10 Eperãpa jara bi pirã: "Jesucristo Michi Waibia" mãik'aapa t'ãripa wãara ijãa bi pirã Tachi Ak'õrepa Cristo chok'ai p'irabaipiji, Tachi Ak'õrepa ma eperã wãpiit'ee ichi truadee. T'ãripa Cristode wãara ijãadak'ãri, p'ek'au k'achia wẽe p'aneepata Ak'õre k'ĩrapite. Ma awara tachi it'aideepa jaradak'ãri, "Jesucristo Michi Waibia", ak'ipipata irua tachi o k'achiadeepa k'aripa ataji.



Juan 3:16,17 —Tachi Ak'õrepa na p'ek'au eujãdepemaarã audú k'inia iru bada perã, ichi warra apai iru bada pëiji piumerã eperãarã pari. Eperãpa iru Warrade ijãa bi pirã, atua-e. Jai-idaak'ãri, Ak'õre eujãde banait'ee. Tachi Ak'õrepa ichi Warra pëi-e paji na p'ek'au eujãdepemaarã atuapiit'ee. Jĩp'a pëiji eperãarã o k'achiade wãdap'edaadeepa k'aripa atade atuanaadamerã.

1 Juan 5:11-13 Tachi Ak'õrepa jara bi tachia iru Warrade wãara ijãadak'ãri, ichita p'anapataadait'ee iru ome. Mapa jaradai: "Chi Tachi Ak'õre Warrade wãara ijãapari it'aa wãit'ee. Mamĩda chi Tachi Ak'õre Warrade ijãa-e bi it'aa wã-e pait'ee. Mãgĩ atuait'ee." Mia jõma jara aupada na k'art'ade p'ãji parã, Tachi Ak'õre Warrade ijãapataarã, k'awaadamerã wãara ichita p'anapataadait'ee Tachi Ak'õre ome.



Génesis 6 – 10

Storyline by: Edward D. Hughes

Illustrated by: Byron Unger, Lazarus
and Alastair Paterson

Adapted by: M. Maillot; Tammy S.

Epena Bible (sja) ©2005, 2010, 2015 Wycliffe Bible
Translators, Inc. All rights reserved.

<https://live.bible.is/bible/SJATBL/MAT/1>

©2026 Bible for Children, Inc.

www.M1914.org

www.bibleforchildren.org

