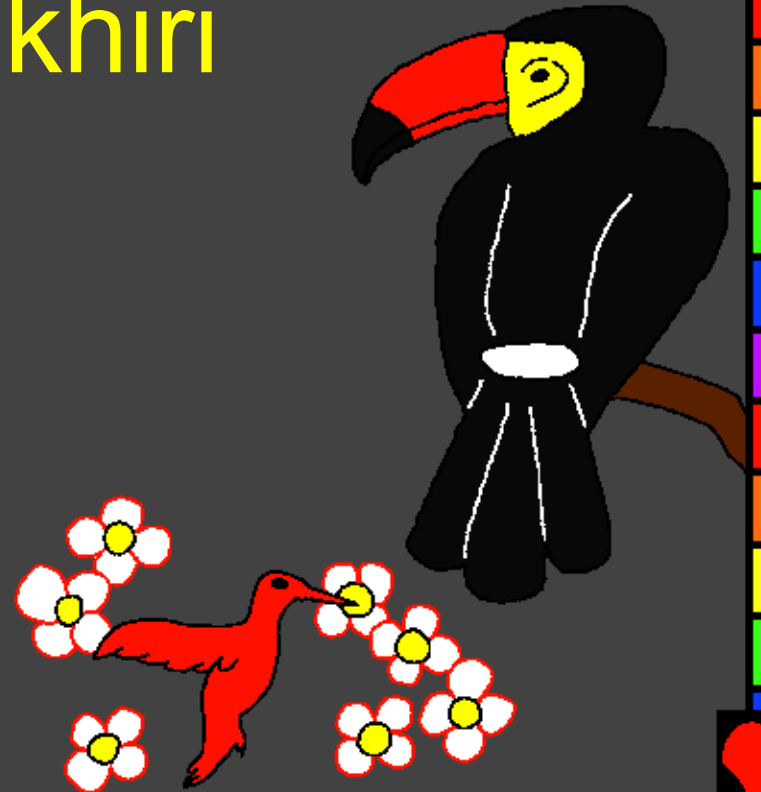
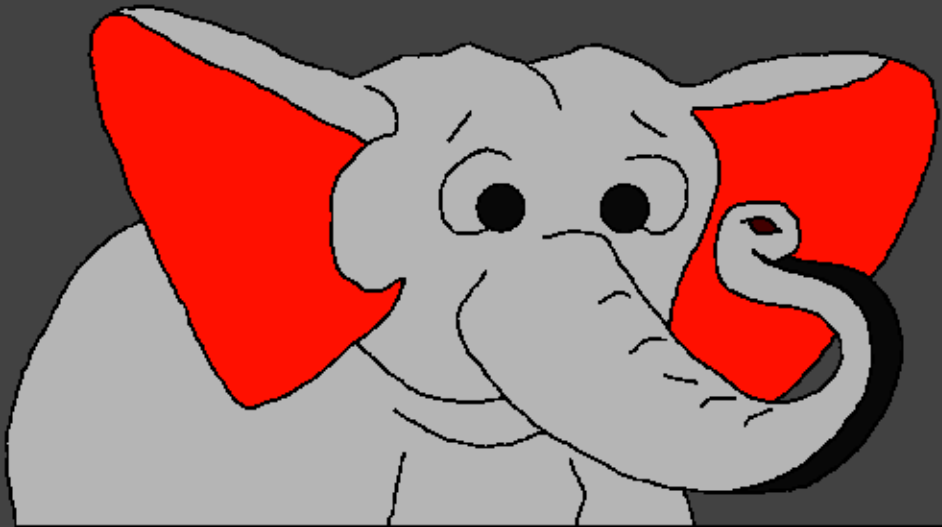


Abyanke Baibulu  
Wú

Sandye Tswashe Wa  
Snu Ayna Khikhiri  
Ge Nya



Ynaka yi: Edward Hughes

Za wa muɓe do nya: Byron Unger; Lazarus  
Alastair Paterson

Za wa go nya: Bob Davies; Tammy S.

Bmapmyi yi: [www.christian-translation.com](http://www.christian-translation.com)

Kpmáknàyi yi: Bible for Children  
[www.M1914.org](http://www.M1914.org)

©2022 Bible for Children, Inc.

Gbegi: He yi kala yi he kpma ʼBendye hni ndye he gà knunu m.

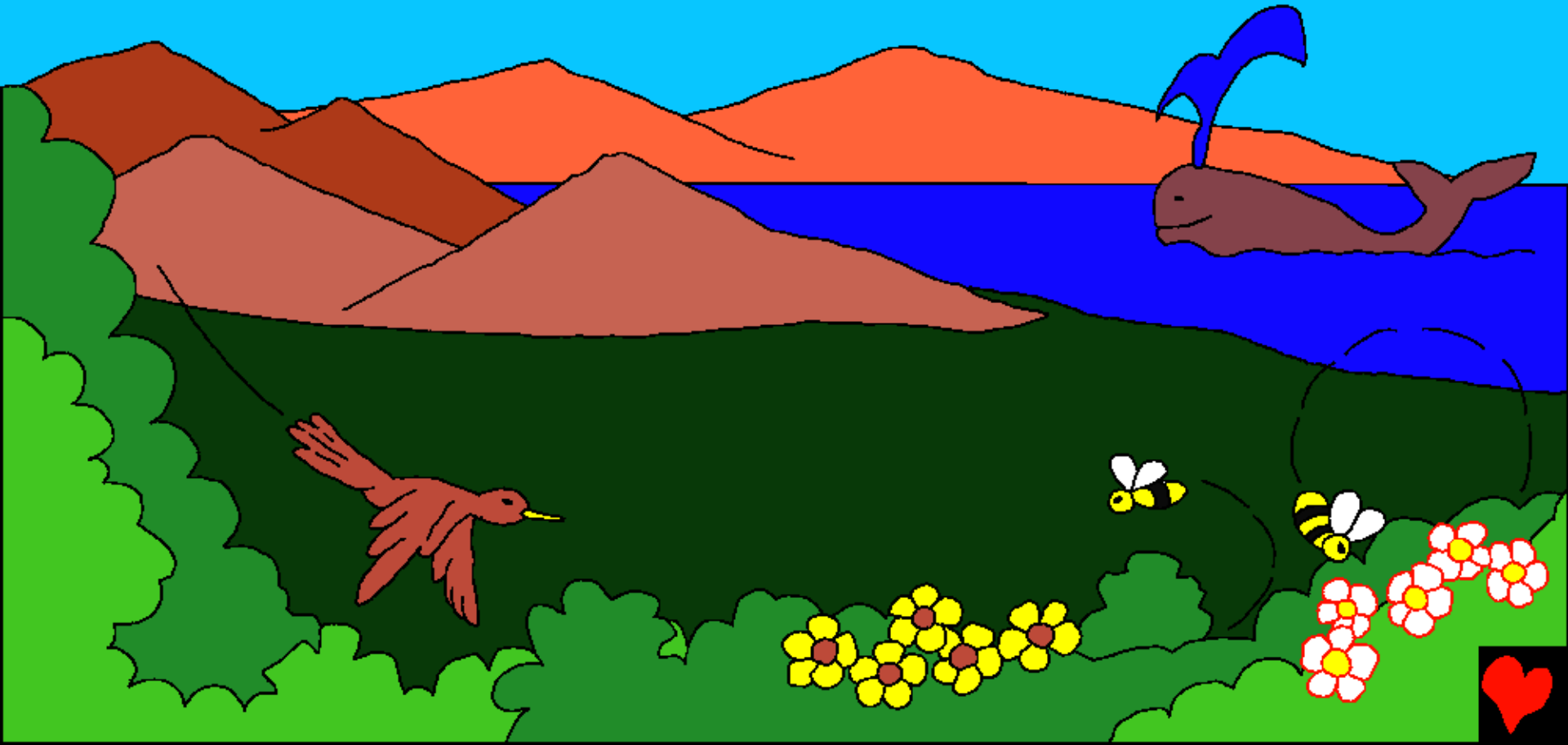


Za snu yi na? Bibulu, Tswashe beta, a da shnandye Zangoti bo a la nya. É esa kparamwa yi lo, Tswashe wa snu Eza byebye nyi ga yi wo Adomu. Twashe a snu Adomu e munjna lo. Sandye Tswashe wa snu esnu dna Adomu ge nya, wo ga ze eza wyewye yi.

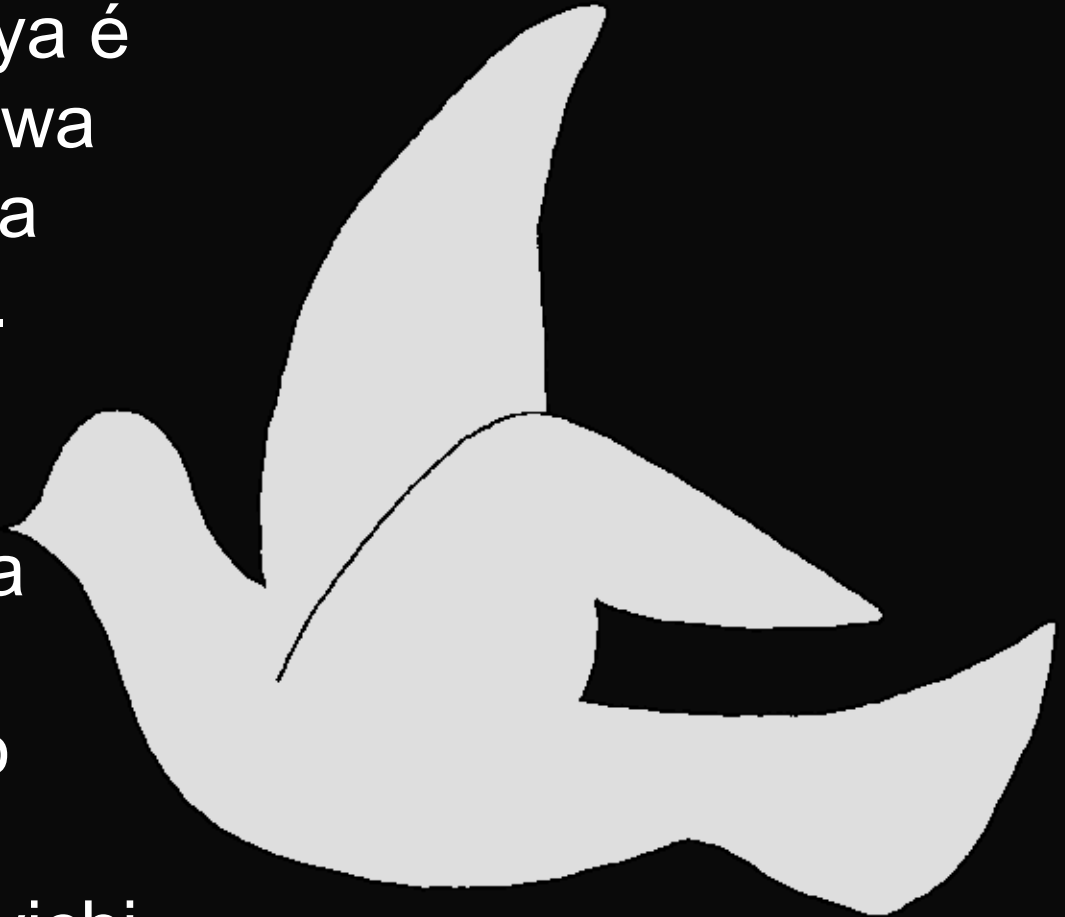
Wo ga dye wo dyewye dna e baznudna bmyabmya yi lo.



Tswashe wo le snu Adomu, wa Nyize bmyabmya yi nu de anya mari yi byeyi. Kpedo-kpedo Tswashe wa aknuknu snu, de ekniba yi, agbmango wyeda yi, de atsnnumwa yi, alu fnuta yi, esnu, anuwna nya, de eka yi.



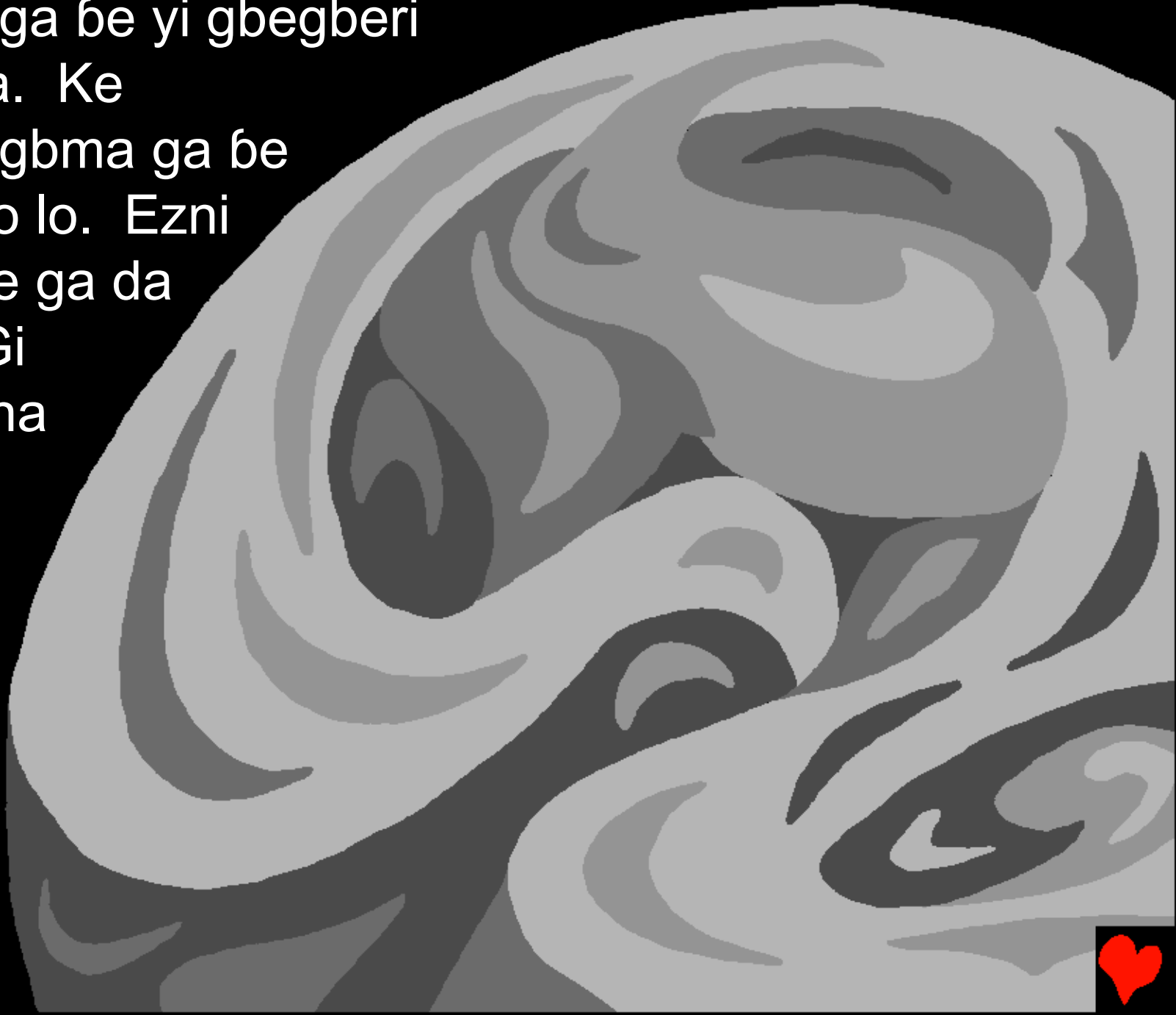
E nyichi lo, Tswashe wo le  
snu nya nya-nya, nyanya é  
be yi lo m Tswashe a bwa  
yi n. Azangoti dodo aba  
dodo anya é be yi lo m.  
Nyanya é be yi lo m.  
Ena de wyejningbma  
be yi lo m. Shenzhibwa  
de ekhibwa yi. Sugo  
ndye a duya la de sugo  
ndye ga zhizhya.  
Tswashe ndye Wo yi nyichi  
yi nya wa bwa yi lo n. Ezni  
Tswashe ga lo tnutnu!



É nyichilo, Tswashe wa snu shenzhi de ekni yi.



Ke ekni ga be yi gbegberi  
tna 'pma. Ke  
wyejningbma ga be  
kpe é wo lo. Ezni  
Tswashe ga da  
beta. “Gi  
bawyekna  
é yi lo.”

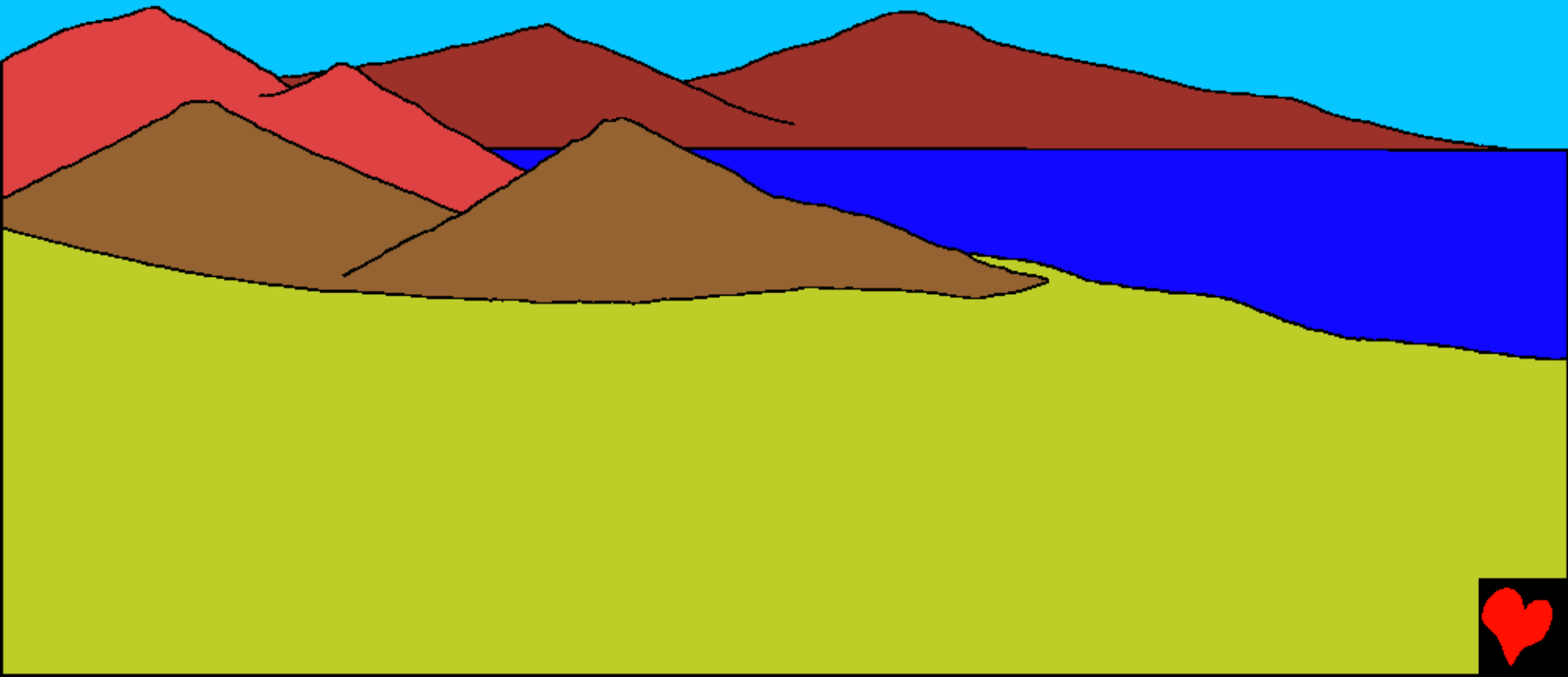


Ke bawyekna ga yi lo. Tswashe ga yi bawyekna  
wyangosa ke ga yi wyejningbma tsongosa. Ke geznu  
de labmiyi ga yi efye byebye nyi.





E efye babari lo, Tswashe ga ye nuwna gnudo gaze  
edna lugoyi, shigo de dnapa yi é shenzhi botayi bo.  
Efye chari lo, Tswashe ga gna, “fya ekni é gbmi tu.”  
Ke ga zelo.



Tswashe ga gi agbmango, afnunte mari, atsnunwa ba  
kna zhi. Ke baga kna zhi. Ke geznu de  
labmiyi yi ga yi efye chari.



Ezni Tswashe ga snu wyango,  
de epya yi de akudu yi mwa  
bere ndye zaza á chnibo wo ba  
banya m. Ke gyeznu de labmi  
yi ga yi efye nyiri.

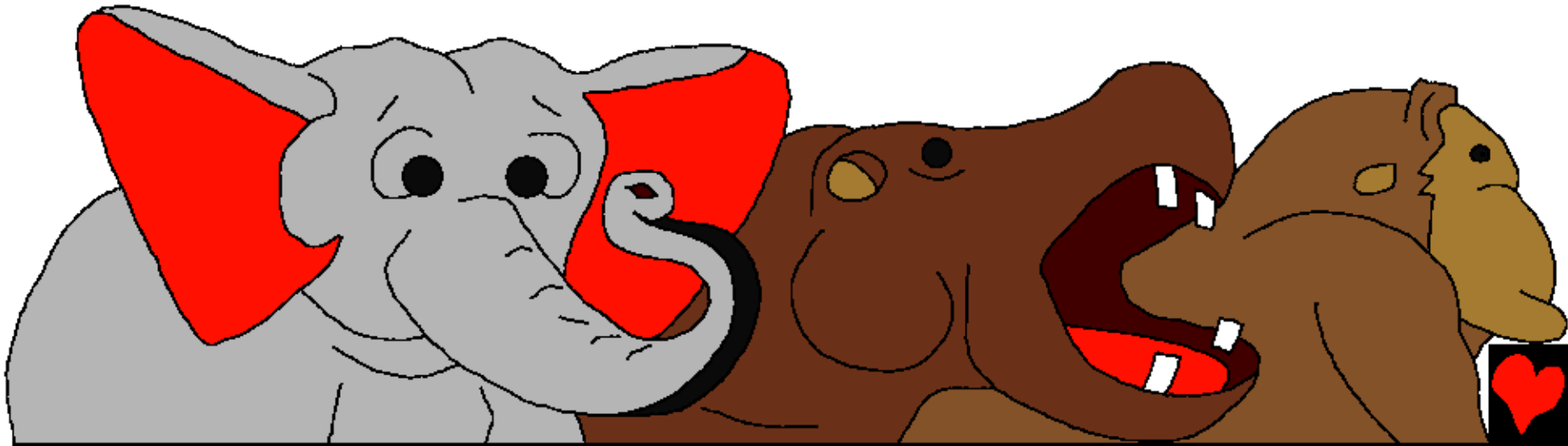


Anyasnu nuwna nyi de ashewo yi de Alu yi ba be é anya ndye Tswashe Wa be ga snu nya lo. E Efyen tñuri lo Wo ga snu ashewo lugoyi de abyiri yi, Alu lugoyi de Alu beredó nyi yi. Tswashe Wa shewo dodo bye snu dye é nu ekni nuwna de alu dodo bye yi dye ba snu pma de ekni yi de nuwna yi de shenzhi yi. Ke gyeznu de labmi yi ga yi efyen tñuri.



E wori nyibmwa lo, Tswahe ga de beta da, ga gna,  
“ekni wo kna anya wyewye snusnu yi zhige...”  
Anyakpa, anyawyewye ga kna zna. Adagba, anakpa  
de anyagagba yi. Ajnu de Bare yi. Anyakpa dododo  
nyibye Tswashe Wa snu ba fyeri hna n.

Ke gyeznu de labmi yi ayi efye tnuwniri.



Tswashe ga da bedezhi snu é 'fye tnuwniri lo- ebo lugoyi. Nyanyanya a bá gnu zangoti bwa. Anyadyi de anyakpayi dye wo snu 'pma geyi. Ke Tswashe ga gna, fya dye ya zangoti snu ndye yi dye nyi. 'Dye wo yi anya mama dageyi.

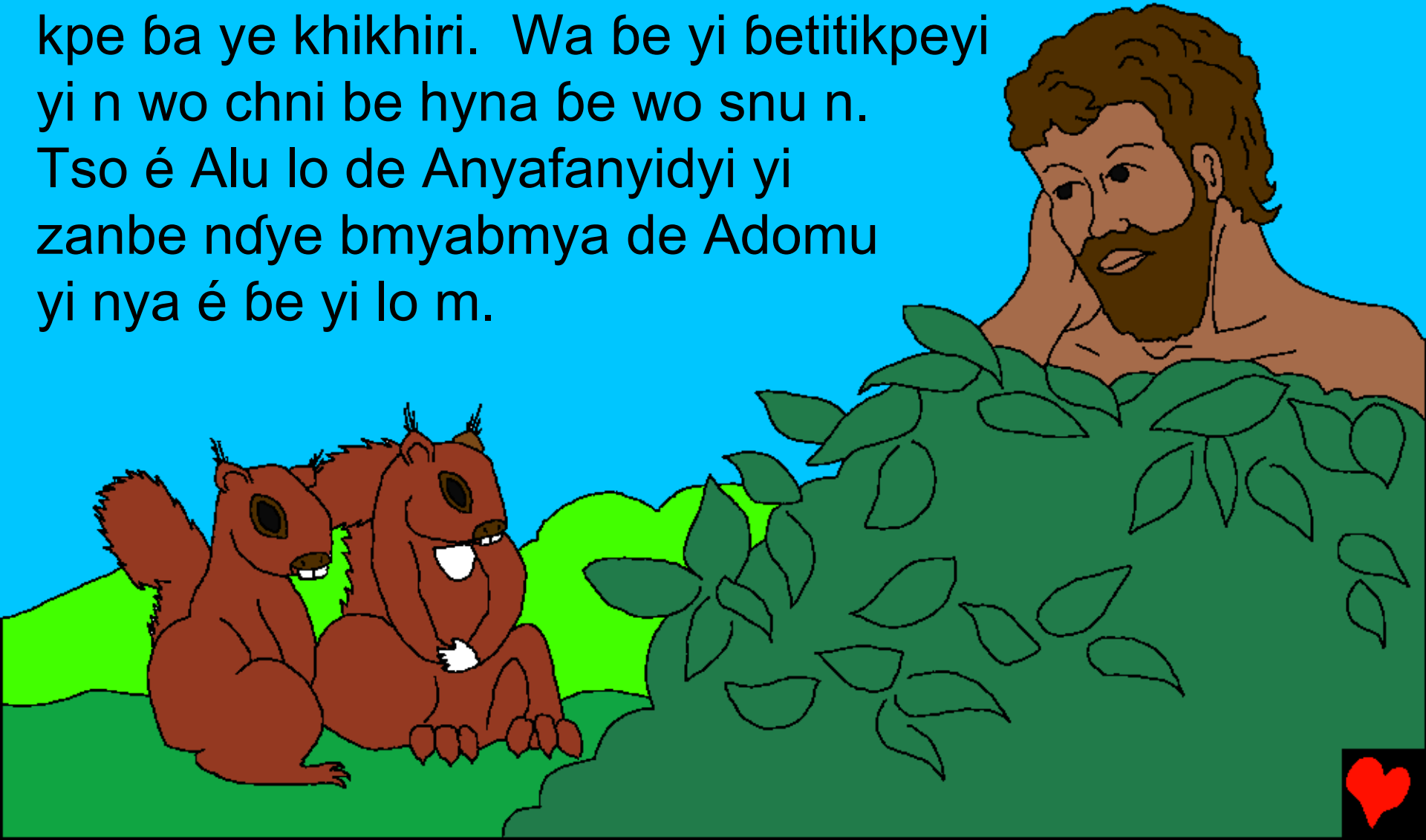
EZNI TSWASHE GA  
ZANGOTI SNU DNA É  
WODYE NYANGOYI  
DOGBE LO; DNA É  
TSWASHE DOGBE  
LO WA SNU.



Tswashe gá dà beta de Adomu yi. “Dyi nya ndye ba he nya é kapu hni bo”. Tso le dyi tsnunwa be mari de bebi yekpe nyi yi m. He gá dyi he gà chni tsutsu.



Ke DAGEYI TWSWASHE ga gna, “ebmya minsa wo yi knari yi m. Mi ga snu bmasnuyi gi wo.” Tswashe ga ku Alu de anyafanyidyi yi zhi Adomu ge. Adomu ga kpe ba ye khikhiri. Wa be yi betitikpeyi yi n wo chni be hyna be wo snu n. Tso é Alu lo de Anyafanyidyi yi zanbe ndye bmyabmya de Adomu yi nya é be yi lo m.





Tswashe ga Adomu wnare chnám. Ke ga wo bala  
gbmiyi, Tswashe ga snu Nyigoza de Adomu bala yi.  
Nyigoza ndye Tswashe wa snu  
nya wa bá gogo de Adomu y.



Tswashe wa snu anyanyanya fi e wyangofye gnu tnuwni lo. Ezni Tswashe ga 'kni mari tu wyangofye ttabari ke gaze snuda 'fye. Dna é Idin Kapu lo, Adomu de wo nyigo Awawu yi ba be yi gbmada yi dyegoyi-dyegoyi ba gi Tswashe mwamwa. Tswashe Wa be yi ba DAGEYI yi, ba 'nyagiyi de ba nawnado yi.



Sandye Tswashe Wa Snu Ayna Khikhiri Ge Nya

Beta é Tswashe Beta lo, Bibulu,

A dyewye dna é

Nyichiyi 1-2

“He beta doo gi ba wyekna.”

Zabura 119:130



Kperi



Baibulu beta ndye hni da Tswashe ndye  
Wa snu yi ke wo ye dye he kpe wo ye nya beta gi yi.

Tswashe kpeko dye ya abekasa snu, ndye Wo yi bebi nya, bebi bechnu yi etsu, tso Tswashe ye he bo dyego-dyegoyi Wo ga Wo Ebyi egba tnu, Yesu, dye Wo tsu ku e znudu lo ke a tsnu wo 'bo e he abebi belo. Ezni Yesu ga dezekpe zhi wyewye yi ke wo ga lo epi Shenzhi! Ndye he ga wyegu gi Yesu ke he ga go 'bwadu, Wo ga snu! Wo ga zhi wo ba dna e he lo bonleyi, ke he kpa yi de wo yi nyize-nyize.

Ndye he ga wyegugi, da bendye hni gi Tswashe:

Yesu, Ma wyegugi He yi Tswashe n, ke he ga ze zango gi he tsu e mi abebi belo, ke bonle yi He de yi. Tsugu zhi he ba dna e mi bo ke he pya mi abebi ya, ke gi mi bwa wyewye wowoyi ezni, ke fyedeyi mi le kpayi de He yi nyize-nyize. Bmamisu dye mi gi he mwamwa ke mi re nyize shnandye he 'byi nyi. A ze lo.

Ba Baibulu ke he da beta de Tswashe yi fyefye fyeo!

Yowana 3:16

