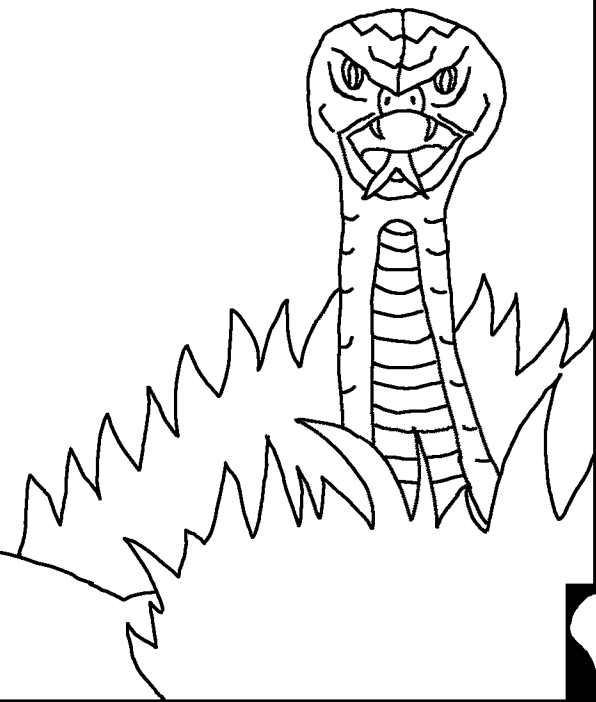


Abyanke Baibulu

Wú

Zangoti Nubo  
Biyna Lala 'Ba



Ynaka yi: Edward Hughes

Za wa mube do nya: Byron Unger; Lazarus  
Alastair Paterson

Za wa go nya: M. Maillot; Tammy S.

Bmapmyi yi: [www.christian-translation.com](http://www.christian-translation.com)

Kpmáknàyi yi: Bible for Children  
[www.M1914.org](http://www.M1914.org)

©2022 Bible for Children, Inc.

Gbegi: He yi kala yi he kpma Bendye hni ndye he gà knunu m.



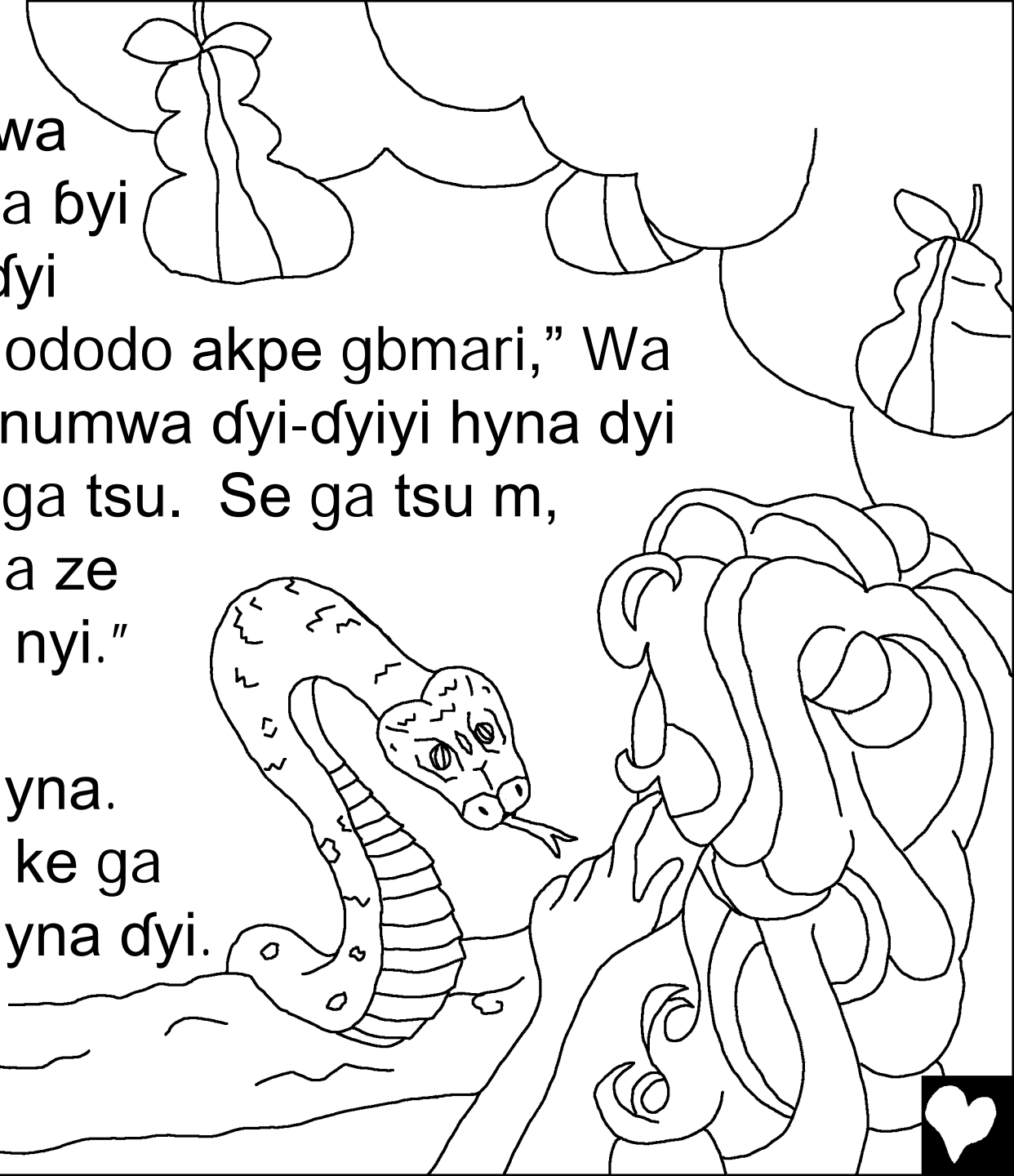
TSWASHE WA ANYANYANYA SNU!

Sandye Tswashe wa snu eza byebye  
nyi ge nya, Adomu, wa be dna Idin Kapu  
lo de wo nyigo yi, Awawu. Ba be yi  
gbmada yi dyegoyi-dyegoyi ba gi

Tswashe mwamwa ke ba Wo  
gbmada wo kpa yi de ba yi nyi  
fyedeyi yi...



Tswashe Wa da  
gise sele d̄yi t̄snumwa  
dododo m?" Ewa ga byi  
Awawu bo. "Yi ga d̄yi  
t̄snumwa d̄yi-d̄yiyi dododo akpe gbmari," Wa  
dnabegbe. Yi ga t̄snumwa d̄yi-d̄yiyi hyna d̄yi  
dodo gaa tobwa, yi ga tsu. Se ga tsu m,  
Ewa ga da lo. "Se ga ze  
shnand̄ye Tswashe nyi."  
Awawu wa be chni  
t̄snumwa d̄yi-d̄yiyi hyna.  
Wo ga ewa beta go ke ga  
t̄snumwa d̄yi-d̄yiyi hyna d̄yi.



Awawu wa Tswashe gbawye  
nya wo ga snu Adomu ga d̄yi-  
d̄yiyi hyna d̄yi du. Adomu snu  
ba gna, "Oo! Mi ga gba  
Tswashe betawye m."

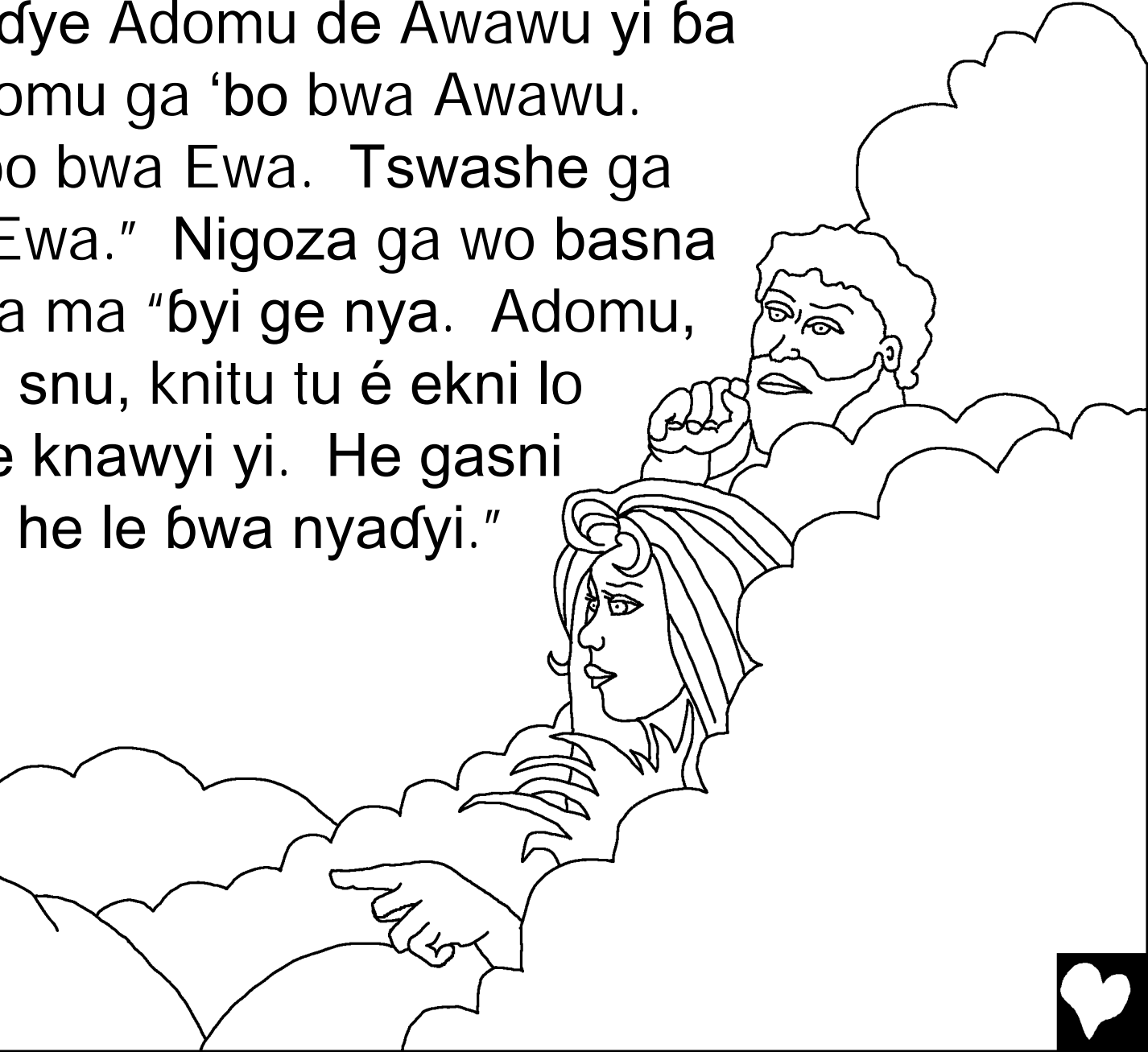
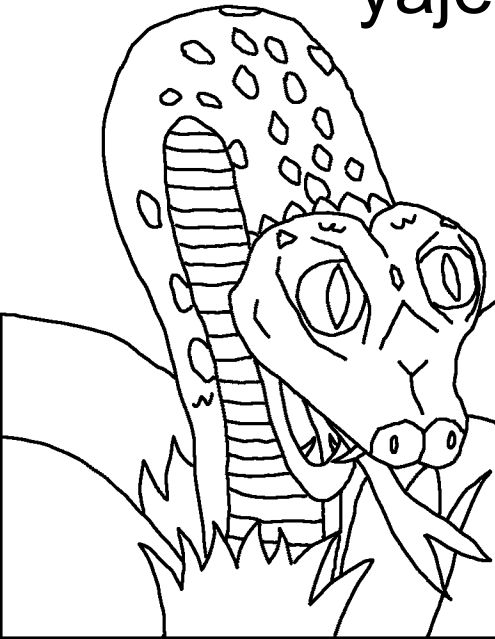




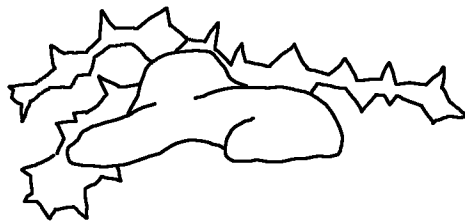
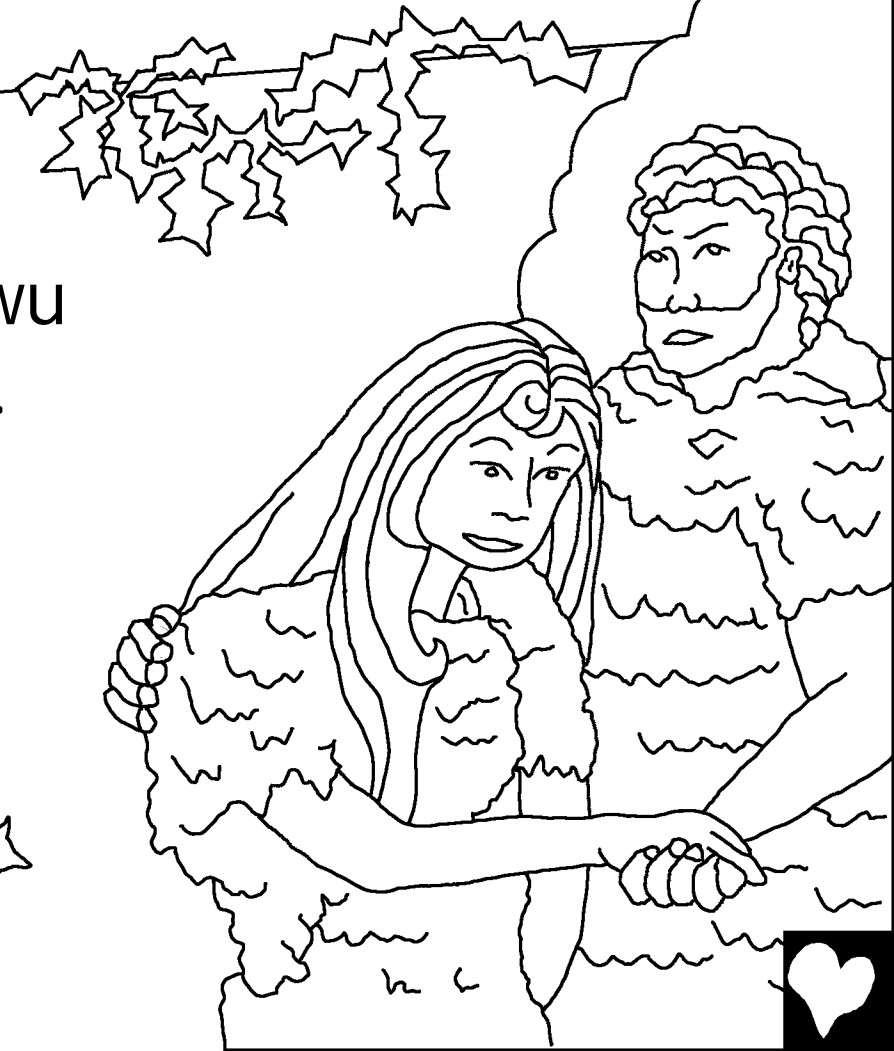
Sandye Adomu de Awawu yi ba snu  
bebi ge nya, ba ga kpego dye ba yi kpalala.  
Ba ga ki figi fnunte ga ze akampe, ba ga pu  
badye ke la bwuyi Tswashe fi e gbmango lo.



Dna geznusa Tswashe ga zhi kapu dye.  
Wa kpe be ndye Adomu de Awawu yi ba  
snu nya. Adomu ga 'bo bwa Awawu.  
Awawu ga "bo bwa Ewa. Tswashe ga  
gna, ekni tu Ewa." Nigoza ga wo basna  
sandye wo ga ma "byi ge nya. Adomu,  
tugni ha bebi snu, knitu tu é ekni lo  
de ekna yi de knawyi yi. He gasni  
yaje he le bwa nyadyi."



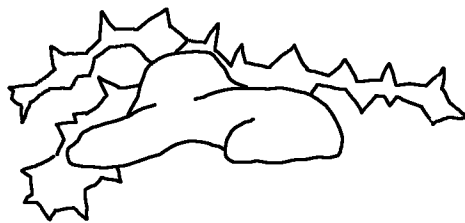
Tswashe ga Adomu de Awawu  
yi knaya é kapu mari hyna lo.  
Bena ba bebi snu, a ga ba  
kpmiya é Tswashe ndye Wo  
gi wyewye nya ya lo!







Tswashe ga byiko nafnuyi snu ke  
nyaba ya. Tswashe ga ede snu de  
epa yi gi Adomu de Awawu yi.  
Tswashe é kpma epa dýe ena?

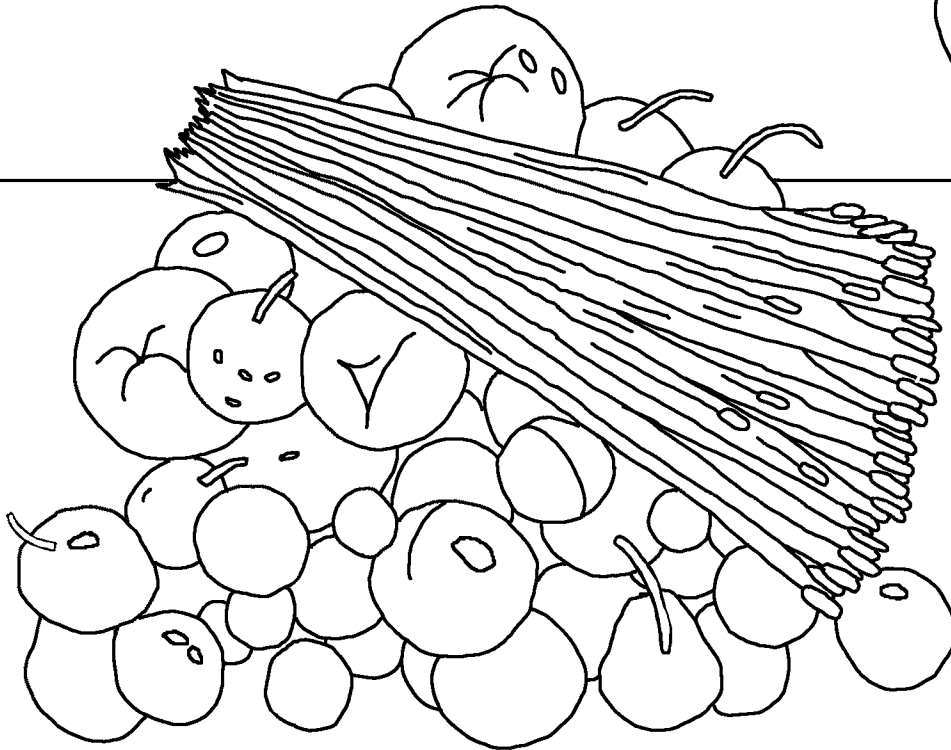


Dna é 'sa lo, Adomu de Awawu yi ga abyima. Ba 'byi minsa byebye nyi, Kainu, wa be yi fyanu yi, ba 'byi babari, Abila, wa yi nyakpa yi n. Fyede Kainu ga wo anyanunu zhi Tswashe ge ndye nyagigi nyi. Abila ga wo nyakpa lugoyi zhi

Tswashe ge du. Abila nyagigi ga gna Tswashe gbmada.



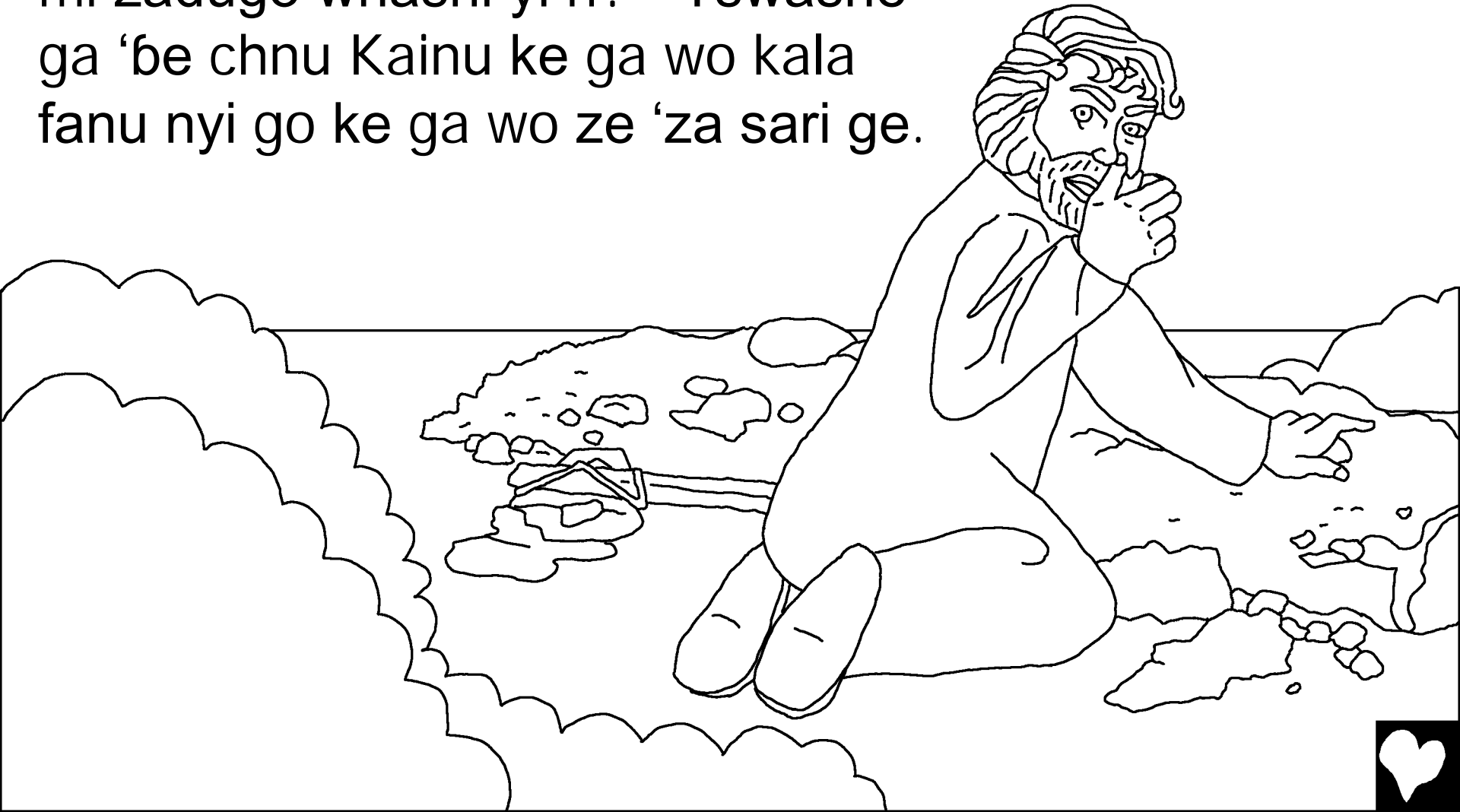
Tswashe gá snu gbmada de Kainu  
nyagigi yi m. Nubo ga nya Kainu bi.  
Tswashe ga gna,” he ga ba besnu  
ndye bmya nya, á ga go he n?



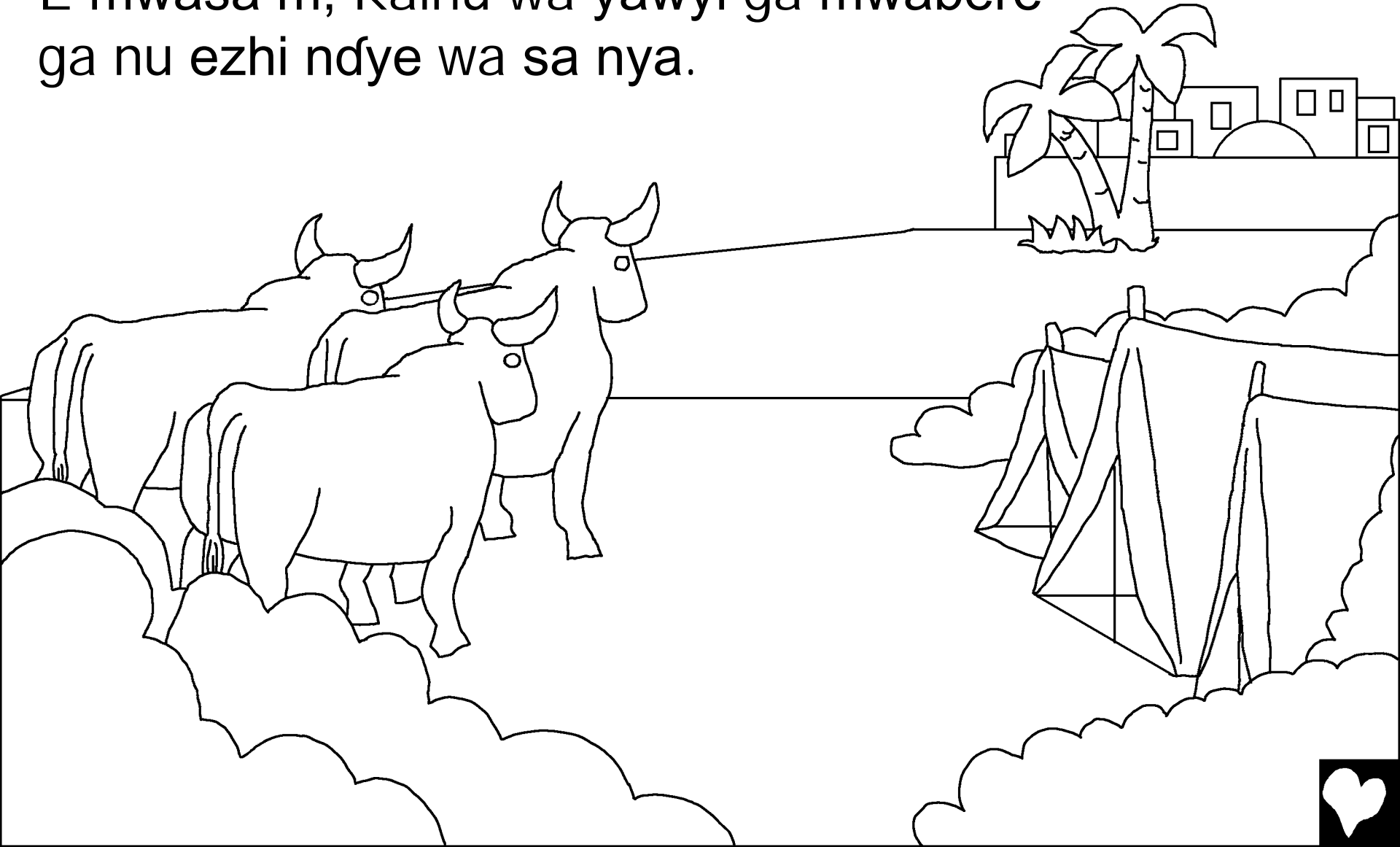
Kainu nubobinya gá duya m.  
Sade ezhni, wo ga 'nya znu  
Abila ga wo wu.



Tswashe ga dabo de Kainu yi.  
“He Zadugo, Abila yi é na? “Mi  
kpeko m,” Kainu ga efu d’yi. “Mi yi  
mi zadugo wnashi yi n?” Tswashe  
ga ‘be chnu Kainu ke ga wo kala  
fanu nyi go ke ga wo ze ‘za sari ge.



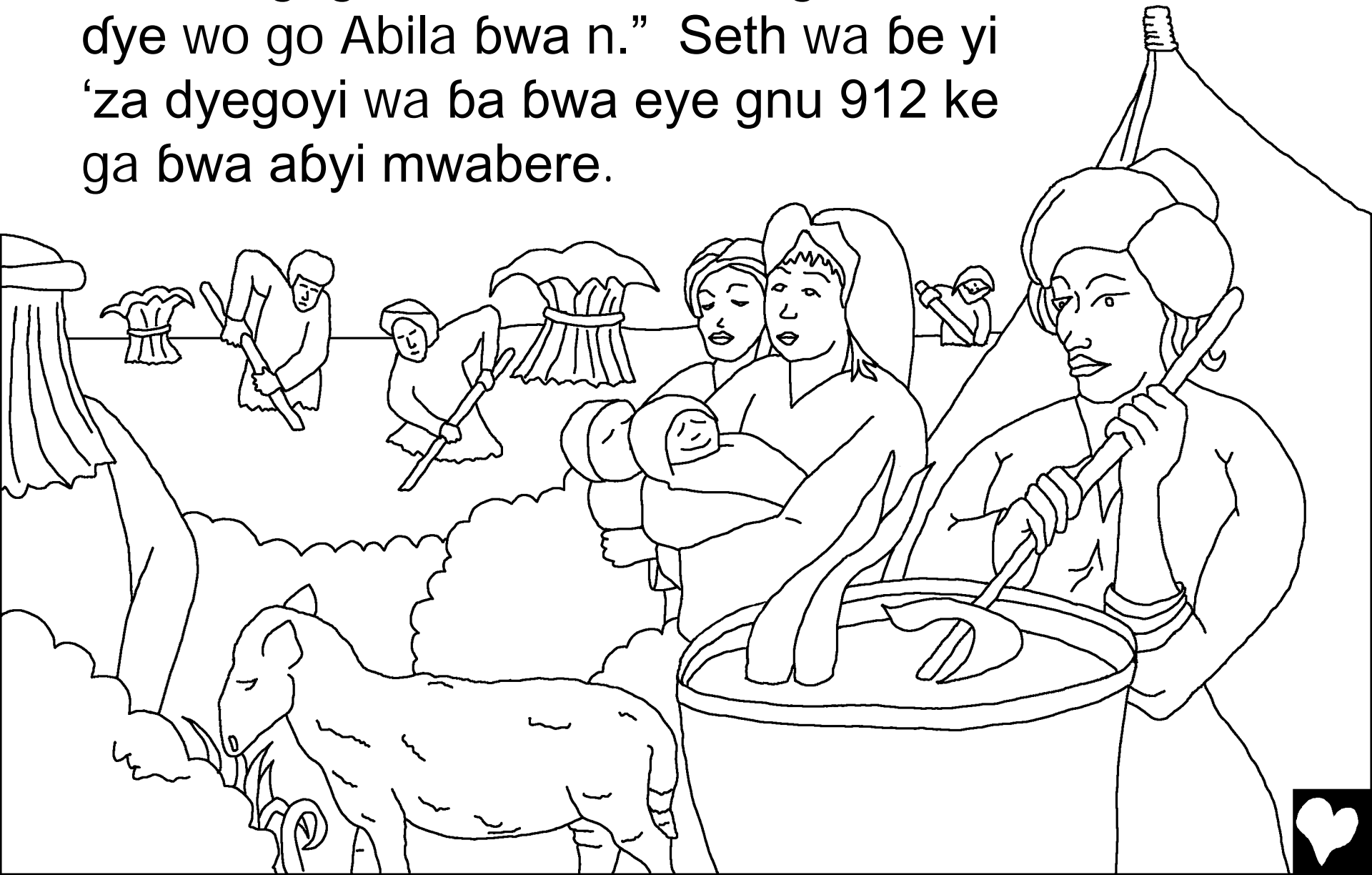
Kainu ga laga é DAGEYI wyeɓwa lo. Wa ɓa mula  
pa de Adomu de Awawu 'ɓyi yi. Ke wo ga abyɓi ma.  
É mwasa m, Kainu wa yawyi ga mwabere  
ga nu ezhi ndye wa sa nya.



Ezni, Adomu de Awawu yi ba  
abyi ga mwabere. É 'sa hyna lo  
aza a be gna 'sa mwa pe nini.

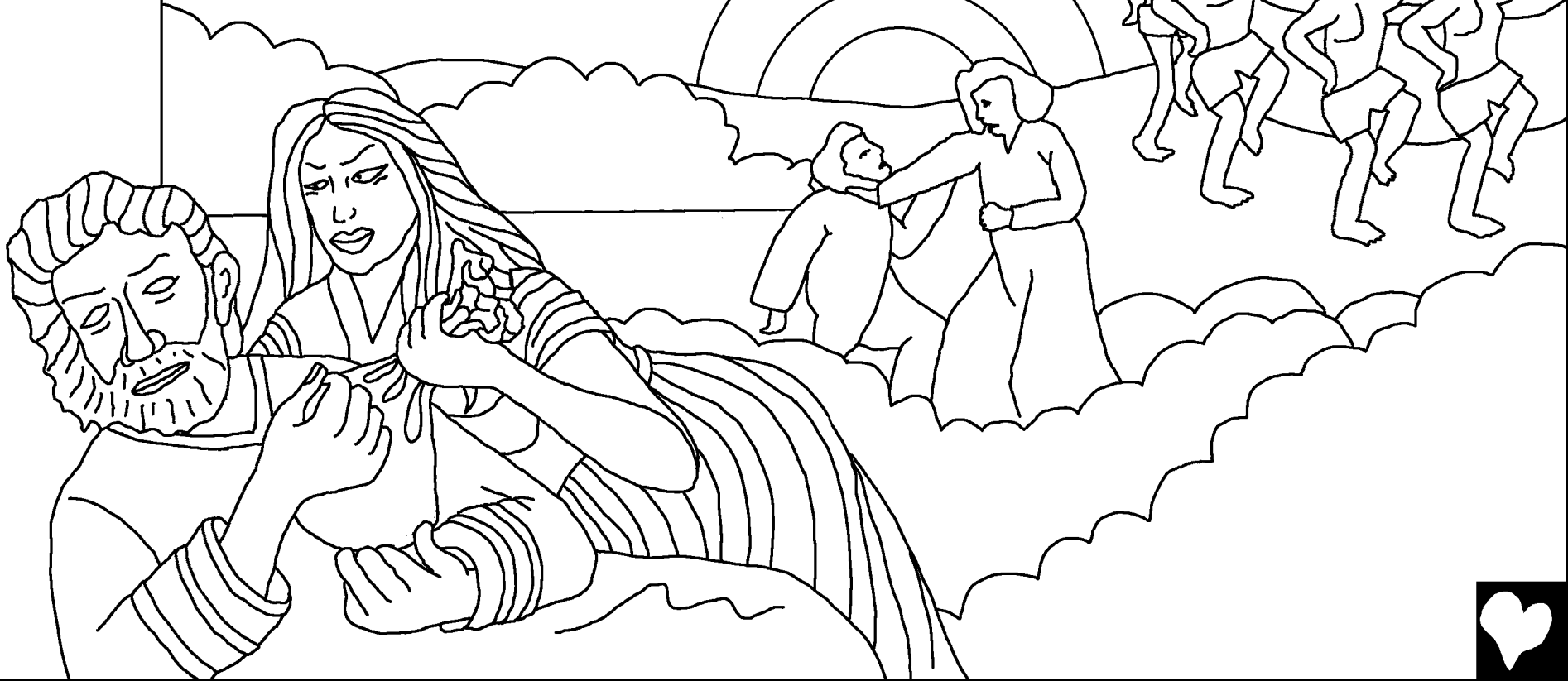


Sandye wa ma wo byiminsa Seth ge nya, Awawu gagna, “Tswashe Wá gi mi Seth dye wo go Abila bwa n.” Seth wa be yi ‘za dyegoyi wa ba bwa eye gnu 912 ke ga bwa abyi mwabere.





É nyize bo, azangoti ba ze azabibi. É tugo tu lo, Tswashe ga nubosnu dye wo ga kpe anyizeri ti anyafayi de Alu yi. Ebwa a du Tswashe ndye wa snu zango nya. Tso nubo a da Tswashe de 'za gbmari yi...



Eza hni a yi Nufu. Seth yawyi, Nufu  
a yi eza dyegoyi nu. Wa dazna de  
Tswashe yi. Wa wu wa 'byi gwnacha  
ba datu Tswashe. Ezni Tswashe ga  
ye wo snu é pma de  
Nufu yi.



Zangoti Nubo Biyna Lala 'Ba  
Beta é Tswashe Beta lo, Bibulu,

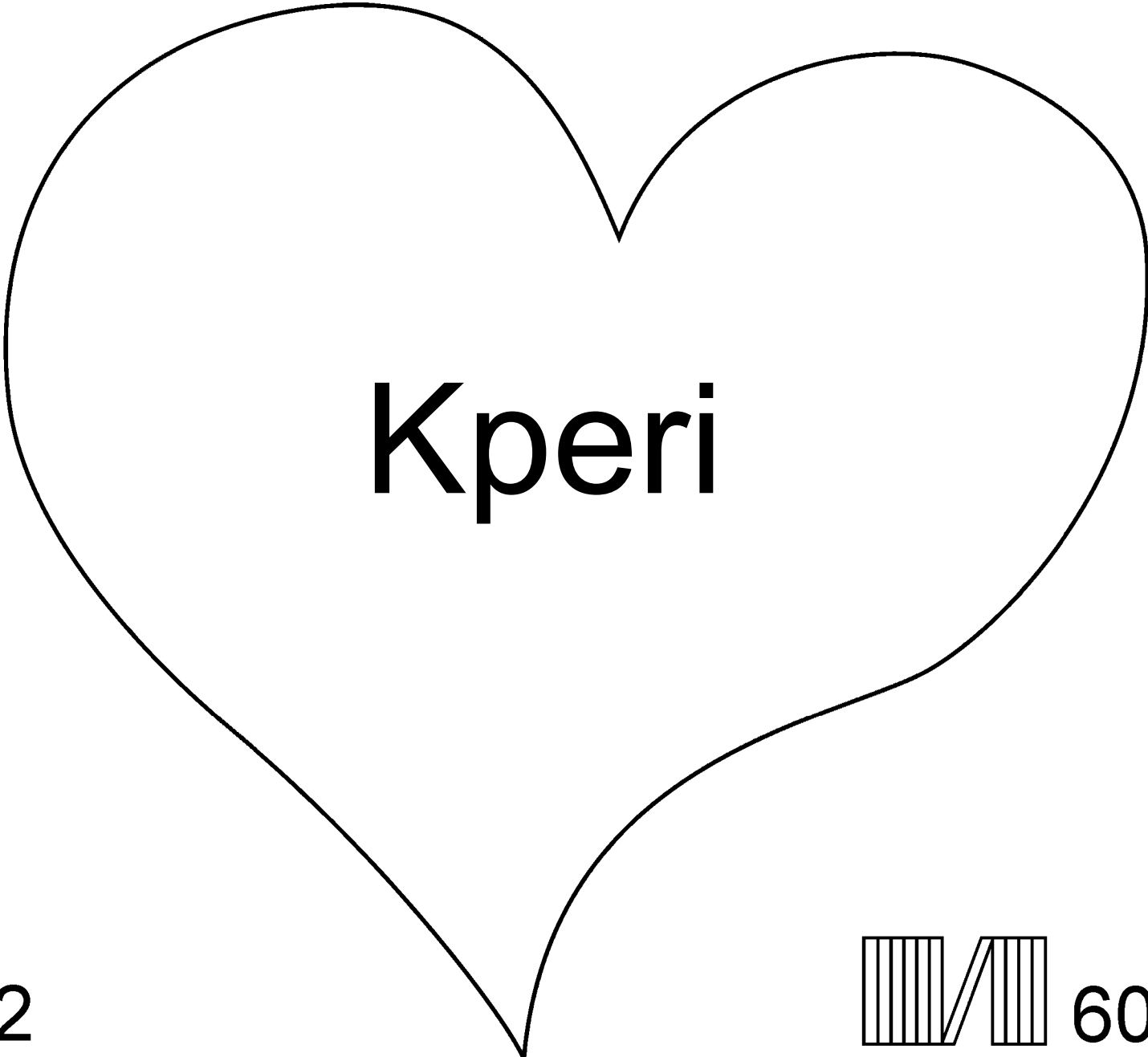
A dyewye dna é

Nyichi 3-6

“He beta dofo gi ba wyekna.”

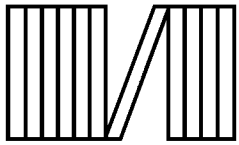
Zabura 119:130





Kperi

2



60



Baibulu beta ndye hni da Tswashe ndye  
Wa snu yi ke wo ye dye he kpe wo ye nya beta gi yi.

Tswashe kpeko dye ya abekasa snu, ndye Wo yi bebi nya, bebi bechnu yi etsu, tso Tswashe ye he bo dyego-dyegoyi Wo ga Wo Ebyi egba tnu, Yesu, dye Wo tsu ku e znudu lo ke a tsnu wo 'bo e he abebi belo. Ezni Yesu ga dezekpe zhi wyewye yi ke wo ga lo epi Shenzhi! Ndye he ga wyegu gi Yesu ke he ga go 'bwadu, Wo ga snu! Wo ga zhi wo ba dna e he lo bonleyi, ke he kpa yi de wo yi nyize-nyize.

Ndye he ga wyegugi, da bendye hni gi Tswashe:

Yesu, Ma wyegugi He yi Tswashe n, ke he ga ze zango gi he tsu e mi abebi belo, ke bonle yi He de yi. Tsugu zhi he ba dna e mi bo ke he pya mi abebi ya, ke gi mi bwa wyewye wowoyi ezni, ke fyedeyi mi le kpayi de He yi nyize-nyize. Bmamisu dye mi gi he mwamwa ke mi re nyize shnandye he 'byi nyi. A ze lo.

Ba Baibulu ke he da beta de Tswashe yi fyefye fyeo!

Yowana 3:16

