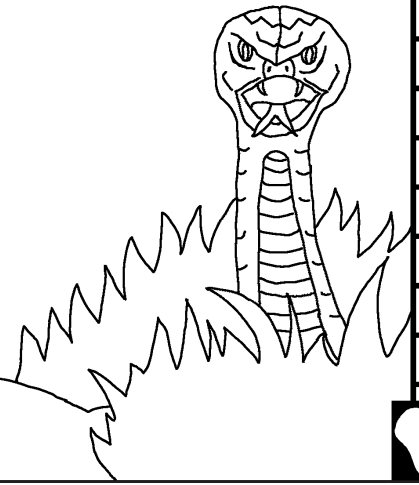


Abyanke Baibulu

Wú

Zangoti Nubo Biyna Lala 'Ba



Ynaka yi: Edward Hughes

Za wa muƙe do nya: Byron Unger; Lazarus
Alastair Paterson

Za wa go nya: M. Maillot; Tammy S.

Bmapmyi yi: www.christian-translation.com

Kpmáknàyi yi: Bible for Children
www.M1914.org

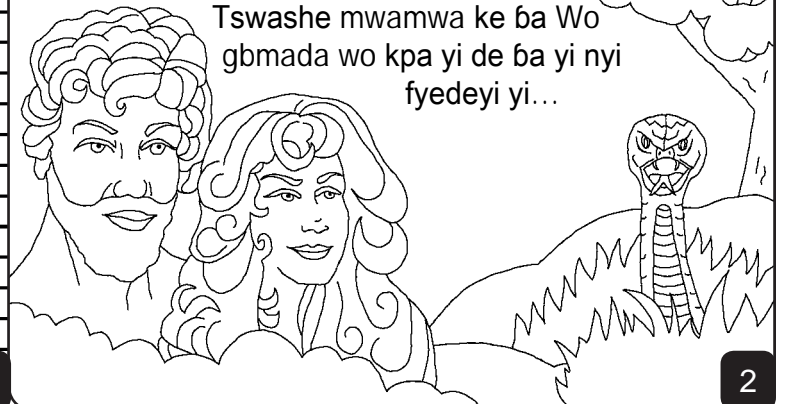
©2022 Bible for Children, Inc.

Gbegi: He yi kala yi he kpma Bèndye hni ndye he gà knunu m.

1

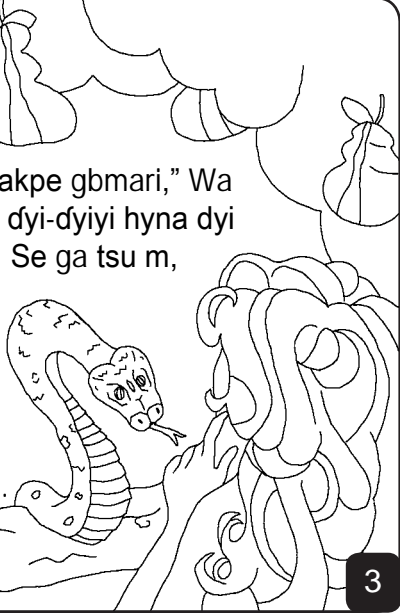
TSWASHE WA ANYANYANYA SNU!
Sandye Tswashe wa snu eza byebye
nyi ge nya, Adomu, wa ƙe dna Idin Kapu
lo de wo nyigo yi, Awawu. 'Ba ƙe yi
gbmada yi dyegoyi-dyegoyi ƙa gi

Tswashe mwamwa ke ƙa Wo
gbmada wo kpa yi de ƙa yi nyi
fyede yi...



2

Tswashe Wa da gise sele d̄yi t̄snumwa dododo m?" Ewa ga b̄yi Awawu bo. "Yi ga d̄yi t̄snumwa d̄yi-d̄yiyi dododo akpe gbmari," Wa dnabegbe. Yi ga t̄snumwa d̄yi-d̄yiyi hyna d̄yi dodo gaa tobwa, yi ga tsu. Se ga tsu m, Ewa ga da lo. "Se ga ze shnand̄ye Tswashe nyi." Awawu wa be chni t̄snumwa d̄yi-d̄yiyi hyna. Wo ga ewa beta go ke ga t̄snumwa d̄yi-d̄yiyi hyna d̄yi.



3

Awawu wa Tswashe gbawye nya wo ga snu Adomu ga d̄yi-d̄yiyi hyna d̄yi du. Adomu snu ba gna, "Oo! Mi ga gba Tswashe betawye m."



4



Sand̄ye Adomu de Awawu yi ba snu bebi ge nya, ba ga kpego d̄ye ba yi kpalala. Ba gá ki figi fnunte gá ze akampe, ba ga pu bad̄ye ke la bwuyi Tswashe fi é gbmango lo.

5

Dna geznusa Tswashe ga zhi kapu dye. Wa kpe be nd̄ye Adomu de Awawu yi ba snu nya. Adomu ga 'bo bwa Awawu. Awawu ga 'bo bwa Ewa. Tswashe ga gna, ekni tu Ewa." Nigoza ga wo basna sand̄ye wo ga ma "b̄yi ge nya. Adomu, tugni ha bebi snu, knitu tu é ekni lo de ekna yi de knawyi yi. He gasni yaje he le b̄wa nya d̄yi."



6

Tswashe ga Adomu de Awawu yi knaya é kapu mari hyna lo. Bena ba bebi snu, a ga ba kp̄miya é Tswashe nd̄ye Wo gi wyewye nya ya lo!



7

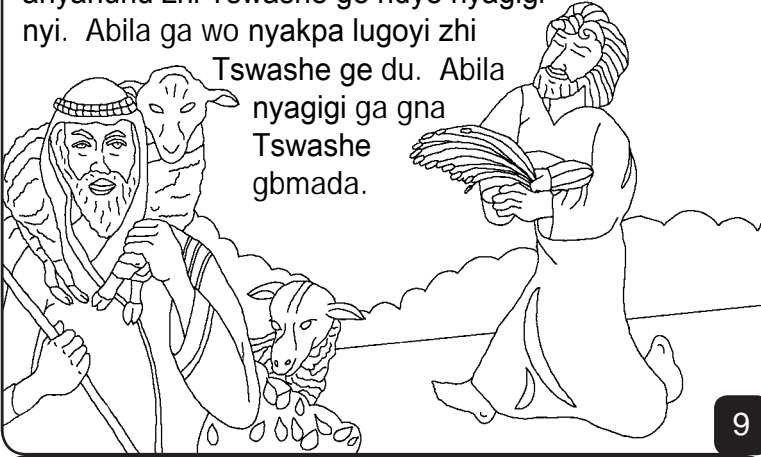
Tswashe ga byiko nafnuyi snu ke nyaba ya. Tswashe ga ede snu de epa yi gi Adomu de Awawu yi. Tswashe é kp̄ma epa d̄ye ena?



8

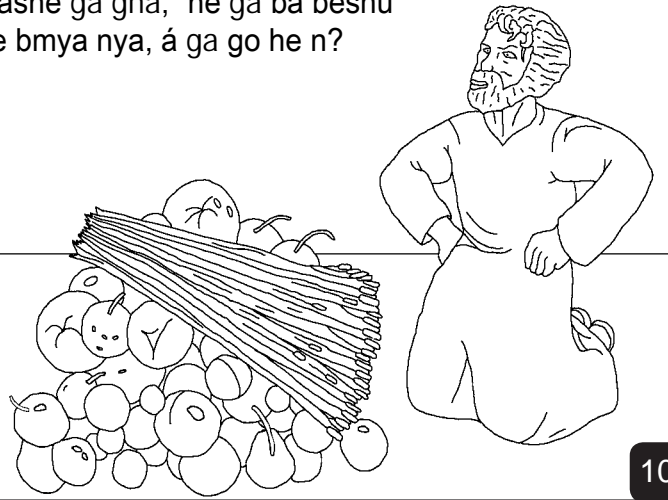
Dna é 'sa lo, Adomu de Awawu yi ga abyima. Ba 'byi minsa byebye nyi, Kainu, wa be yi fyanu yi, ba 'byi babari, Abila, wa yi nyakpa yi n. Fyede Kainu ga wo anyanunu zhi Tswashe ge ndye nyagigi nyi. Abila ga wo nyakpa lugoyi zhi

Tswashe ge du. Abila nyagigi ga gna Tswashe gbmada.



9

Tswashe ga snu gbmada de Kainu nyagigi yi m. Nubo ga nya Kainu bi. Tswashe ga gna," he ga ba besnu ndye bmya nya, á ga go he n?



10

Kainu nubobinya ga duya m. Sade ezhni, wo ga 'nya znu Abila ga wo wu.



11

Tswashe ga dabo de Kainu yi. "He Zadugo, Abila yi é na? "Mi kpeko m," Kainu ga efu dyi. "Mi yi mi zadugo wnashi yi n?" Tswashe ga 'be chnu Kainu ke ga wo kala fanu nyi go ke ga wo ze 'za sari ge.



12

Kainu ga laga é DAGEYI wyebwa lo. Wa ba mula pa de Adomu de Awawu 'byi yi. Ke wo ga aby ma. É mwasa m, Kainu wa yawyi ga mwabere ga nu ezhi ndye wa sa nya.



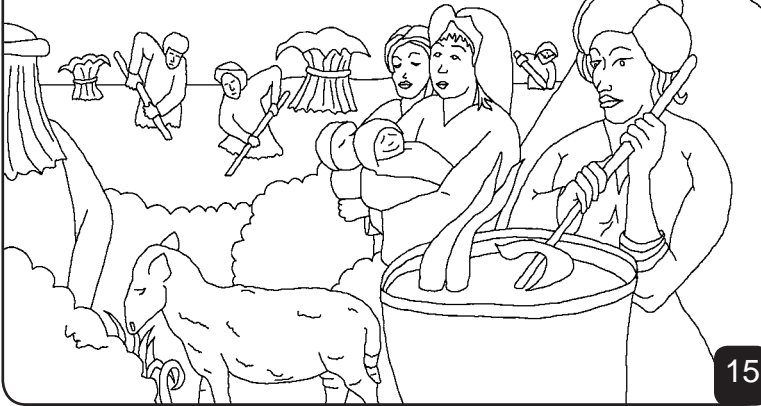
13

Ezni, Adomu de Awawu yi ba aby ga mwabere. É 'sa hyna lo aza a be gna 'sa mwa pe nini.



14

Sandye wa ma wo byiminsa Seth ge nya, Awawu gagna, "Tswashe Wá gi mi Seth dye wo go Abila bwa n." Seth wa be yi 'za dyegoyi wa ba bwa eye gnu 912 ke ga bwa abyí mwabere.



15

É nyize bo, azangoti ba ze azabíbi. É tugo tu lo, Tswashe ga nubosnu dye wo ga kpe anyizeri ti anyafayi de Alu yi. Ebwa a du Tswashe ndye wa snu zango nya. Tso nubo a da Tswashe de 'za gbmari yi...



16

Eza hni a yi Nufu. Seth yawyi, Nufu a yi eza dyegoyi nu. Wa dazna de Tswashe yi. Wa wu wa 'byi gwnacha ba datu Tswashe. Ezni Tswashe ga ye wo snu é pma de Nufu yi.



17

Zangoti Nubo 'Biyna Lala 'Ba
Beta é Tswashe 'Beta lo, Bibulu,
A dyewye dna é
Nyichi 3-6

"He beta dódo gi ba wyekna."
Zabura 119:130

18

Kperi

2

60

19

Baibulu beta ndye hni da Tswashe ndye
Wa snu yi ke wo ye dye he kpe wo ye nya beta gi yi.

Tswashe kpeko dye ya abekasa snu, ndye Wo yi bebi nya, bebi bechnu yi etsu, tso Tswashe ye he bo dyego-dyegoyi Wo ga Wo Ebyi egba tnu, Yesu, dye Wo tsu ku é znudu lo ke a tsnu wo 'bo é he abebi belo. Ezni Yesu ga dezekpe zhi wyewye yi ke wo ga lo epi Shenzhi! Ndye he ga wyegu gi Yesu ke he ga go 'bwadu, Wo ga snu! Wo ga zhi wo ba dna é he lo bonleyi, ke he kpa yi de wo yi nyize-nyize.

Ndye he ga wyegugi, da bendye hni gi Tswashe: Yesu, Ma wyegugi He yi Tswashe n, ke he ga ze zango gi he tsu é mi abebi belo, ke bonle yi He de yi. Tsugu zhi he ba dna é mi bo ke he pya mi abebi ya, ke gi mi bwa wyewye wowoyi ezni, ke fyedeyi mi le kpayi de He yi nyize-nyize. Bmamisú dye mi gi he mwamwa ke mi re nyize shandye he 'byi nyi. A ze lo.

Ba Baibulu ke he da beta de Tswashe yi fyefye fyeo!
Yowana 3:16

20