

Zangoti Nubo 'Biyna Lala 'Ba  
Beta é Tswashe Beta lo, Bibulu,  
A dyewye dna é  
Nyichi 3-6

"He beta dofo gi ba wyekna."  
Zabura 119:130

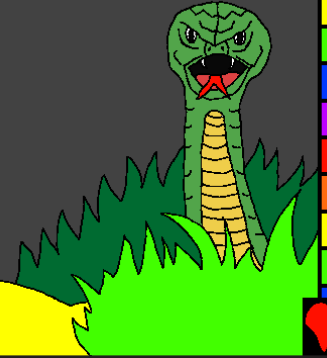
19

20

21

22

# Zangoti Nubo Biyna Lala 'Ba



Ynaka yi: Edward Hughes  
Za wa mube do nya: Byron Unger; Lazarus  
Alastair Paterson

Bmapmyi yi: [www.christian-translation.com](http://www.christian-translation.com)  
Za wa go nya: M. Maillot; Tammy S.

Beta 2 é 60 lo

**M1914.org**

**Bible for Children, PO Box 3, Winnipeg MB R3C 2G1 Canada**

Gbegi: He yi kala yi he kpma Bendye hni ndye he ga knunu m.

Tswashe kpego dye ya abekasa snu, ndye wo yi dye  
bebi nya. Bebi betsnu yi etsu n.

Tswashe yeyi dyego-dyegoyi Wo ga Wo 'byi tnu, Yesu,  
dye Wo tsu ku é znudu lo ke wo gba yi betsnu. Yesu  
wa zhi wyewye ke ga dezekpe lo Shenzhi! Bonleyi  
Tswashe ga pya yi abebi ya.

Ndye he ye he zniwye e he abebi lo, da bendye hni gi  
Tswashe: Tswashe, ma wyegugi dye Yesu wa tsu é mi lo  
bolo ke wo de yi wyewye. Tsugu zhi he ba dna é mi lo  
ke he pya mi abebi ya, ke gi mi bwa wyewye wowoyi  
ezni, ke ezni mi yi de He yi nyize-nyize. Bmamisnu mi  
yi He 'byi. A ze lo. Yowana 3:16

Ba Baibulu ke he da beta de Tswashe yi fyefye fyee!

Gbagyi East

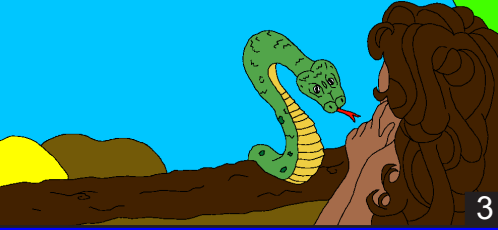
TSWASHE WA ANYANYANYA  
SNU! Sandye Tswashe wa snu  
eza byebye nyi ge nya, Adomu, wa  
be dna Idin Kapu lo de wo nyigo yi,  
Awawu.



Ba be yi gbmada yi dyegoyi-dyegoyi  
ba gi Tswashe mwamwa ke ba Wo  
gbmada wo kpa yi de ba yi nyi  
fyede yi . . .

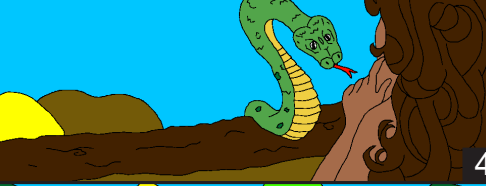


"Tswashe Wa da gise sele d'yi tsumwaa dododo m?" Ewa ga byi Awawu bo. "Yi ga d'yi tsumwaa d'yi-d'yi dododo akpe gbmari," Wa dnabegbe.



3

Yi ga tsumwaa d'yi-d'yi hyna d'yi dodo gaa tobwa, yi ga tsu. Se ga tsu m, Ewa ga da lo. "Se ga ze shnandye Tswashe nyi." Awawu wa be chni tsumwaa d'yi-d'yi hyna. Wo ga ewa beta go ke ga tsumwaa d'yi-d'yi hyna d'yi.



4

Awawu wa Tswashe gbawye nya wo ga snu Adomu ga d'yi-d'yi hyna d'yi du. Adomu snu ba gna, "Oo! Mi ga gba Tswashe betawye m."



5



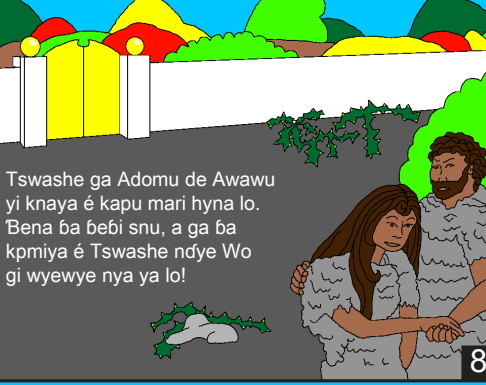
Sandye Adomu de Awawu yi ba snu bebi ge nya, ba ga kpego d'ye ba yi kpalala. Ba ga ki figi fnunte ga ze akampe, ba ga pu bad'ye ke la bwuyi Tswashe fi e gbmango lo.

6

Dna geznusa Tswashe ga zhi kapu d'ye. Wa kpe be nd'ye Adomu de Awawu yi ba snu nya. Adomu ga 'bo bwa Awawu. Awawu ga "bo bwa Ewa. Tswashe ga gna, ekni tu Ewa." Nigoza ga wo basna sandye wo ga ma "byi ge nya. Adomu, tugni ha bebi snu, knitu tu e ekni lo de ekna yi de knawyi yi. He gasni yaje he le bwa nyadyi."

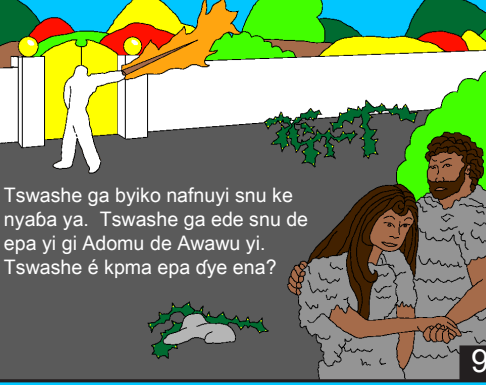


7



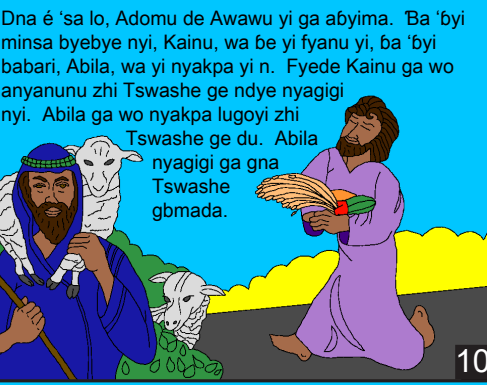
Tswashe ga Adomu de Awawu yi knaya e kapu mari hyna lo. Bena ba bebi snu, a ga ba kpriya e Tswashe nd'ye Wo gi wyewye nya ya lo!

8



Tswashe ga byiko nafnuyi snu ke nyaaba ya. Tswashe ga ede snu de epa yi gi Adomu de Awawu yi. Tswashe e kpma epa d'ye ena?

9



Dna e 'sa lo, Adomu de Awawu yi ga abyima. Ba 'byi minsa byebye nyi, Kainu, wa be yi fyanu yi, ba 'byi babari, Abila, wa yi nyakpa yi n. Fyede Kainu ga wo anyanunu zhi Tswashe ge nd'ye nyagigi nyi. Abila ga wo nyakpa lugoyi zhi Tswashe ge du. Abila nyagigi ga gna Tswashe gbmada.

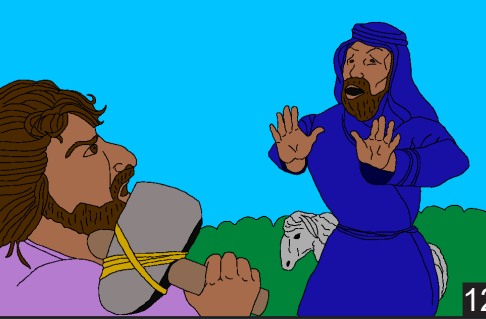
10

"Tswashe ga snu gbmada de Kainu nyagigi yi m. Nubo ga nya Kainu bi. Tswashe ga gna," he ga ba besnu nd'ye bmya nya, a ga go he n?"



11

Kainu nubobinya ga duya m. Sade ezhni, wo ga 'nya znu Abila ga wo wu.



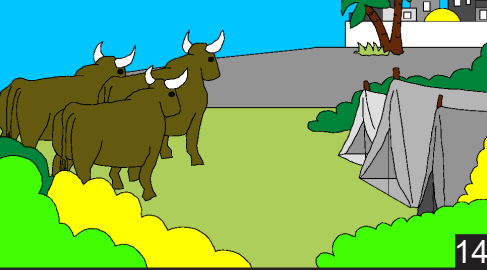
12

Tswashe ga dabo de Kainu yi. "He Zadugo, Abila yi e na?" "Mi kpekem," Kainu ga efu d'yi. "Mi yi mi zadugo wnashi yi n?" Tswashe ga 'be chnu Kainu ke ga wo kala fanu nyi go ke ga wo ze 'za sari ge.



13

Kainu ga laga e DAGEYI wyebwa lo. Wa ba mula pa de Adomu de Awawu 'byi yi. Ke wo ga aby ma. E mwasam, Kainu wa yawyi ga mwabere ga nu ezhi nd'ye wa sa nya.



14

Ezni, Adomu de Awawu yi ba aby ga mwabere. E 'sa hyna lo aza a be gna 'sa mwa pe nini.



15

Sandye wa ma wo byiminsa Seth ge nya, Awawu gagna, "Tswashe Wa gi mi Seth d'ye wo go Abila bwa n." Seth wa be yi 'za dyegoyi wa ba bwa eye gnu 912 ke ga bwa aby mwabere.



16

E nyize bo, azangoti ba ze azabibi. E tugo tu lo, Tswashe ga nubosnu d'ye wo ga kpe anyizeri ti anyafayi de Alu yi. Ebwa a du Tswashe nd'ye wa snu zango nya. Tso nuboo a da Tswashe de 'za gbmari yi . . .



17

Eza hni a yi Nufu. Seth yawyi, Nufu a yi eza dyegoyi nu. Wa dazna de Tswashe yi. Wa wu wa 'byi gwnacha ba datu Tswashe. Ezni Tswashe ga ye wo snu e pma de Nufu yi.



18