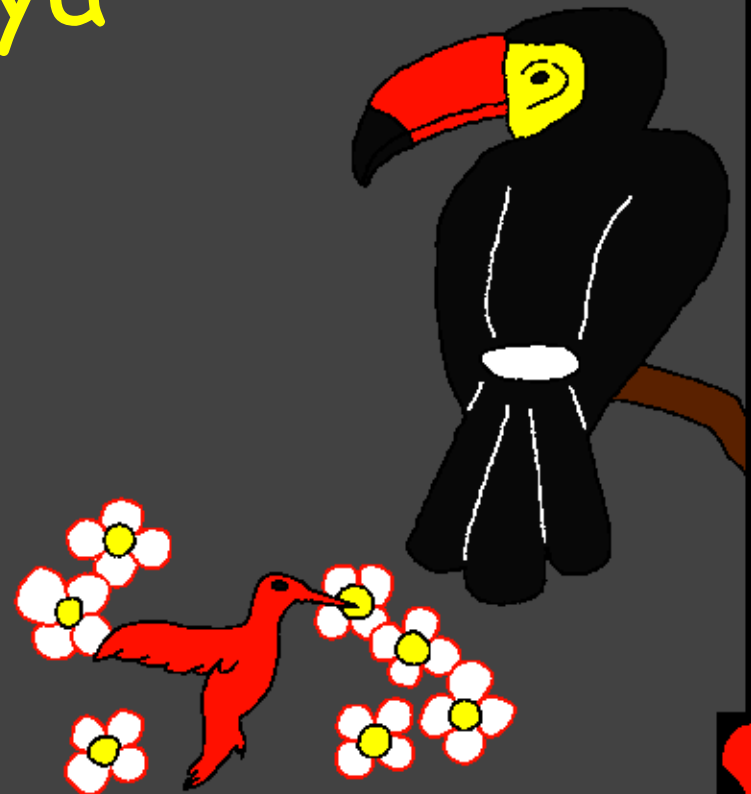
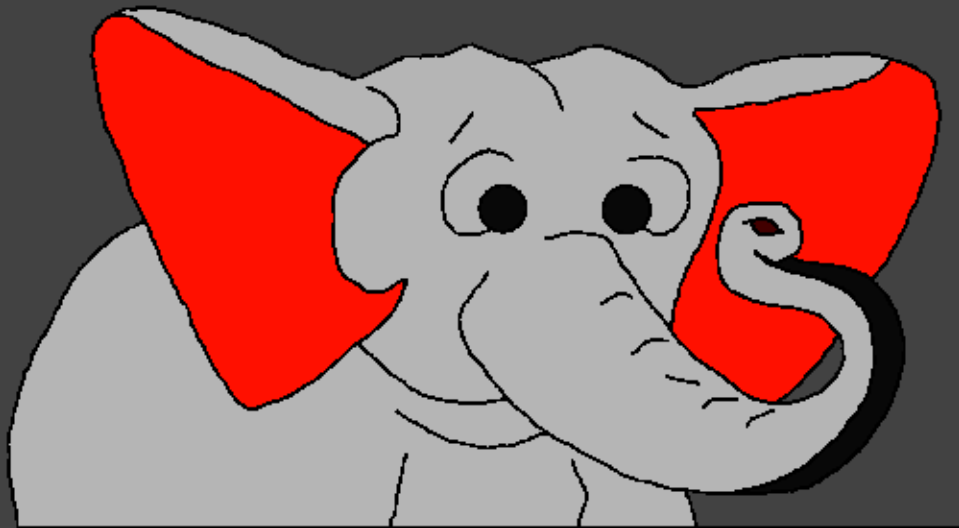


Littafi Abi nya  
tnunceyi

Esa n Shekwoyi  
Bei zhin Anya  
vinya nyi



Aka yi: Edward Hughes

Awu yi: Byron Unger; Lazarus  
Alastair Paterson

Ago yi: Bob Davies; Tammy S.

Agogna yi: [www.christian-translation.com](http://www.christian-translation.com)

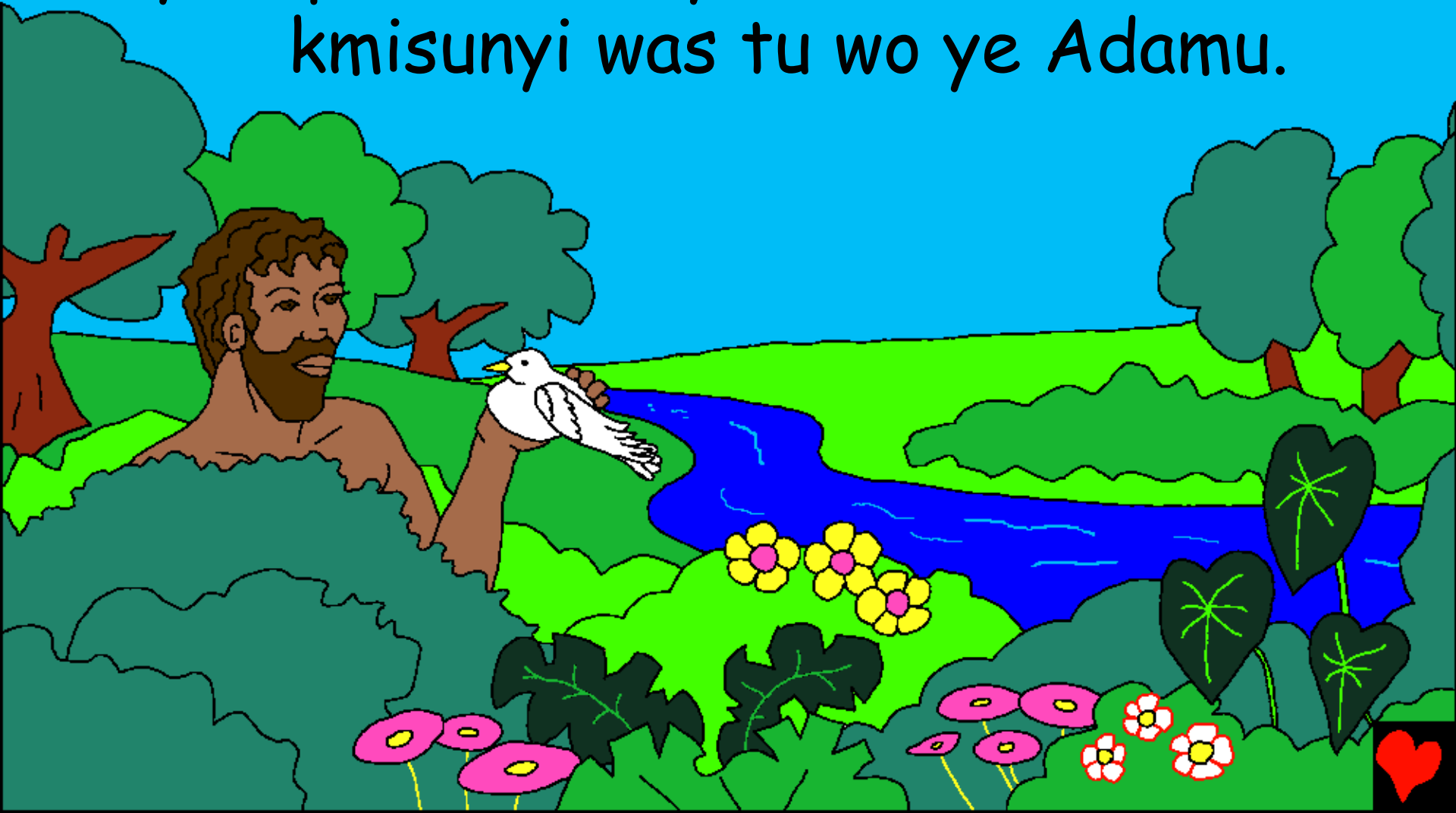
Aza nba zhinko: Bible for Children  
[www.M1914.org](http://www.M1914.org)

©2021 Bible for Children, Inc.

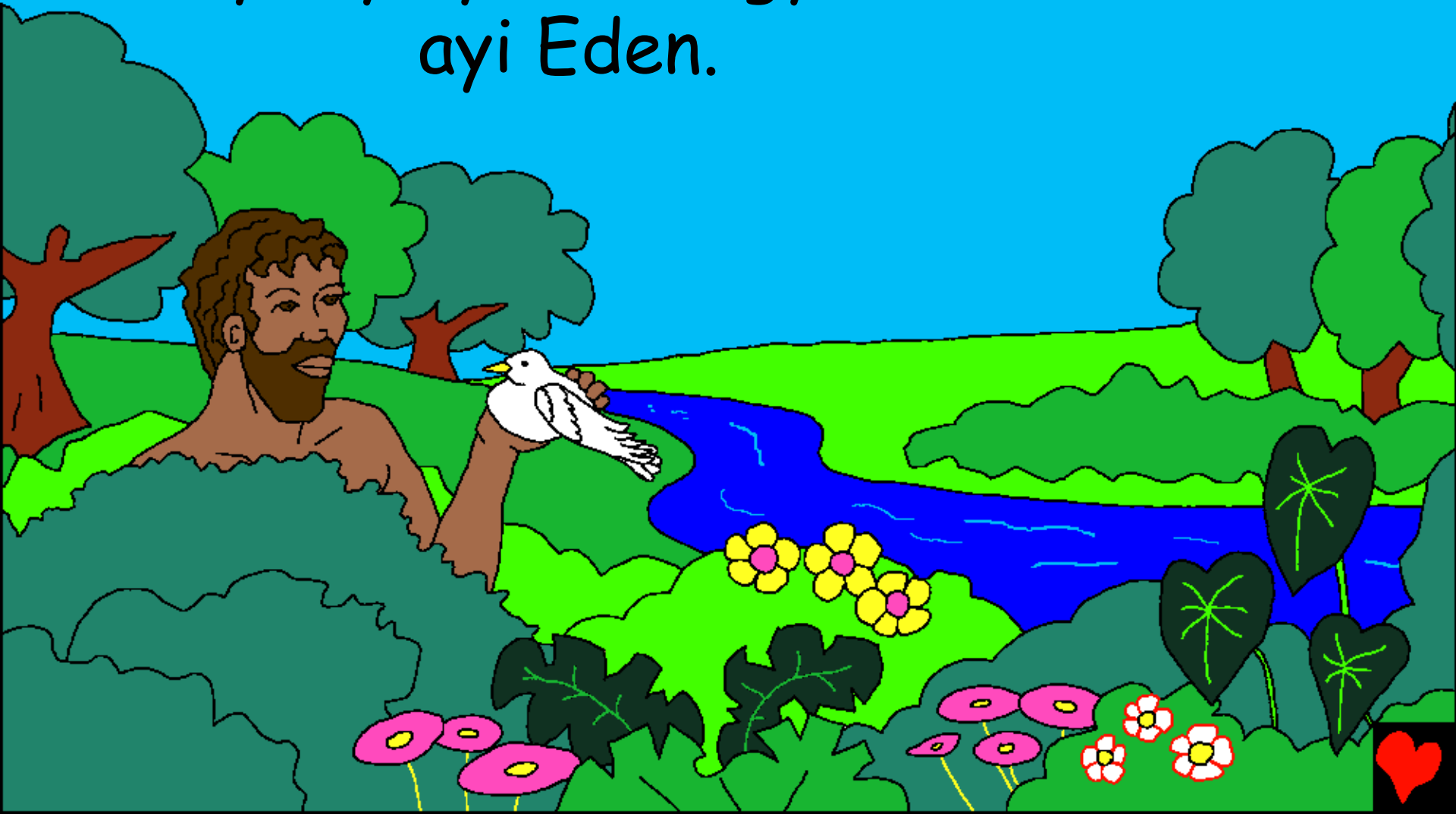
Dama: Ho yenchi lo ha kpan ko ha lu nabagyi ye,  
ndeï nho to ye hakun nu.



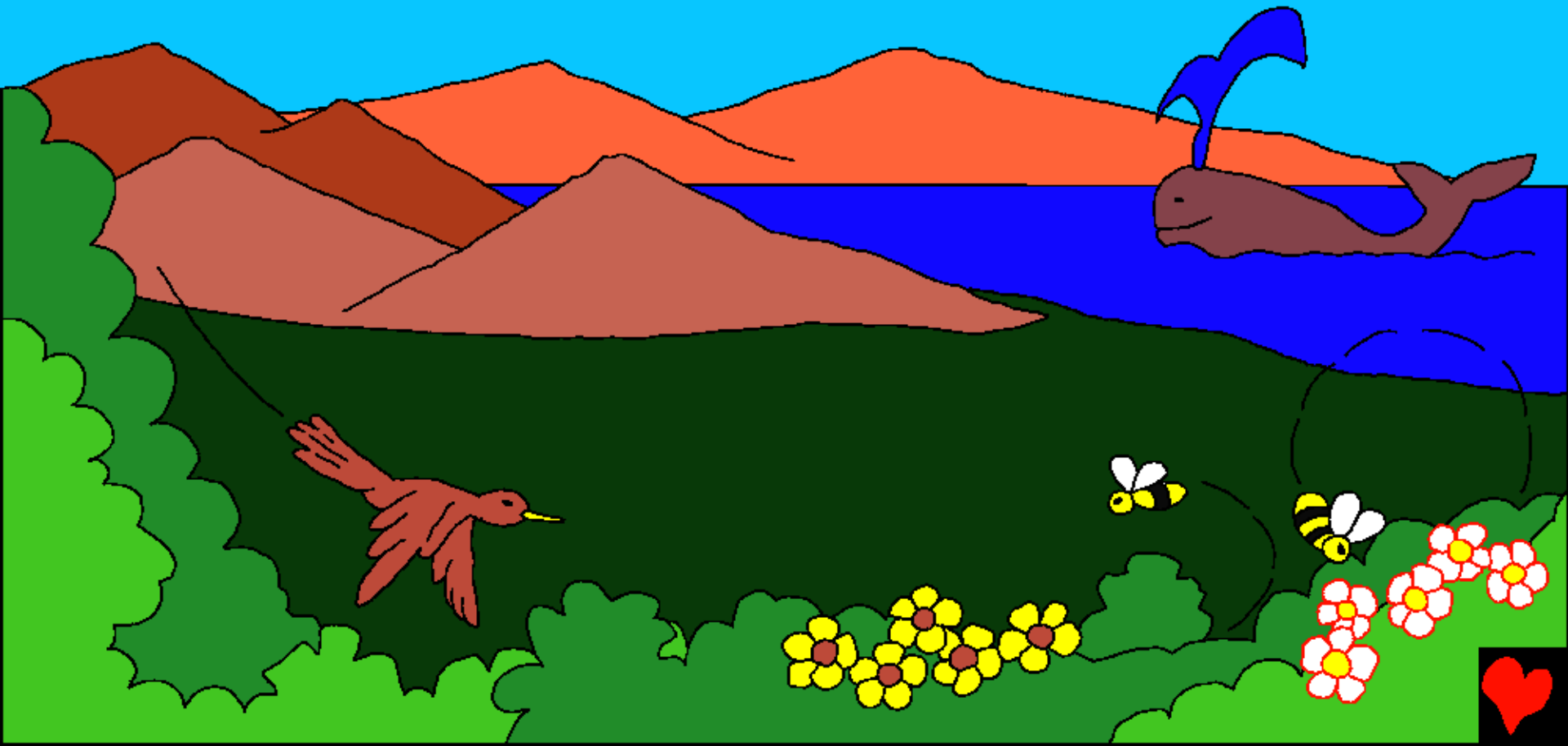
Nyi ka nu Bei zhin ya? Littafi, Shekwoyi  
Beda, dayi shi zayinkochi Asaseba bei ya.  
Tunyi sapa, Shekwoyi was zhin oza  
kmisunyi was tu wo ye Adamu.



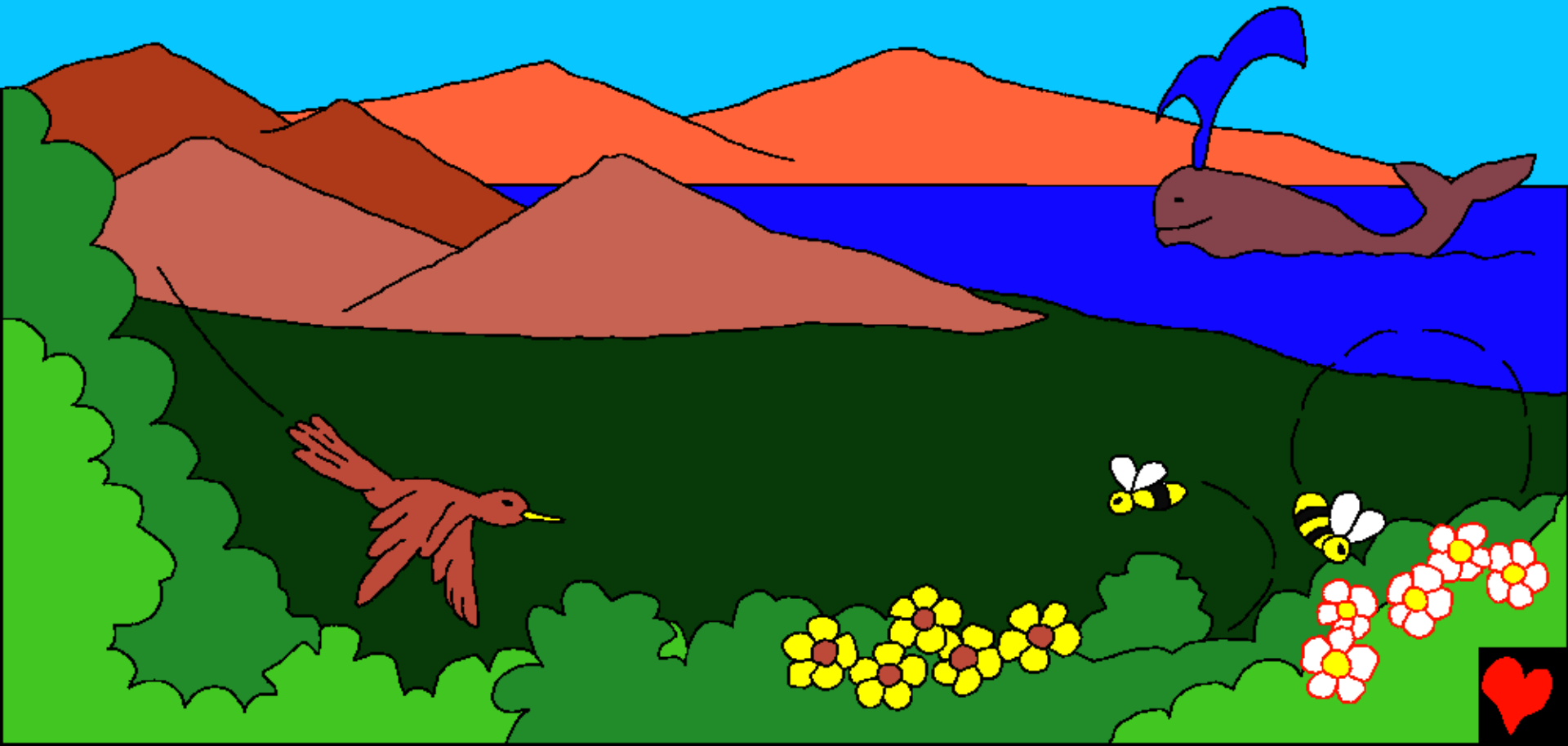
Shekwoyi azhin Adamu n butukunyi nu n  
kni. Esa n Shekwoyi bei fi Adamu sun, wa  
bwa wyewyeiyi. Was gye wohin ndna nfa  
ayi Eden.



Kafin Shekwoyi zhin Adamu, Wa zhin  
anyi manayi nnu na anya wowoyi. Pece-  
peceyi Shekwoyi Wa zhin a genyi-genyi  
bedo na abajeyi, ...



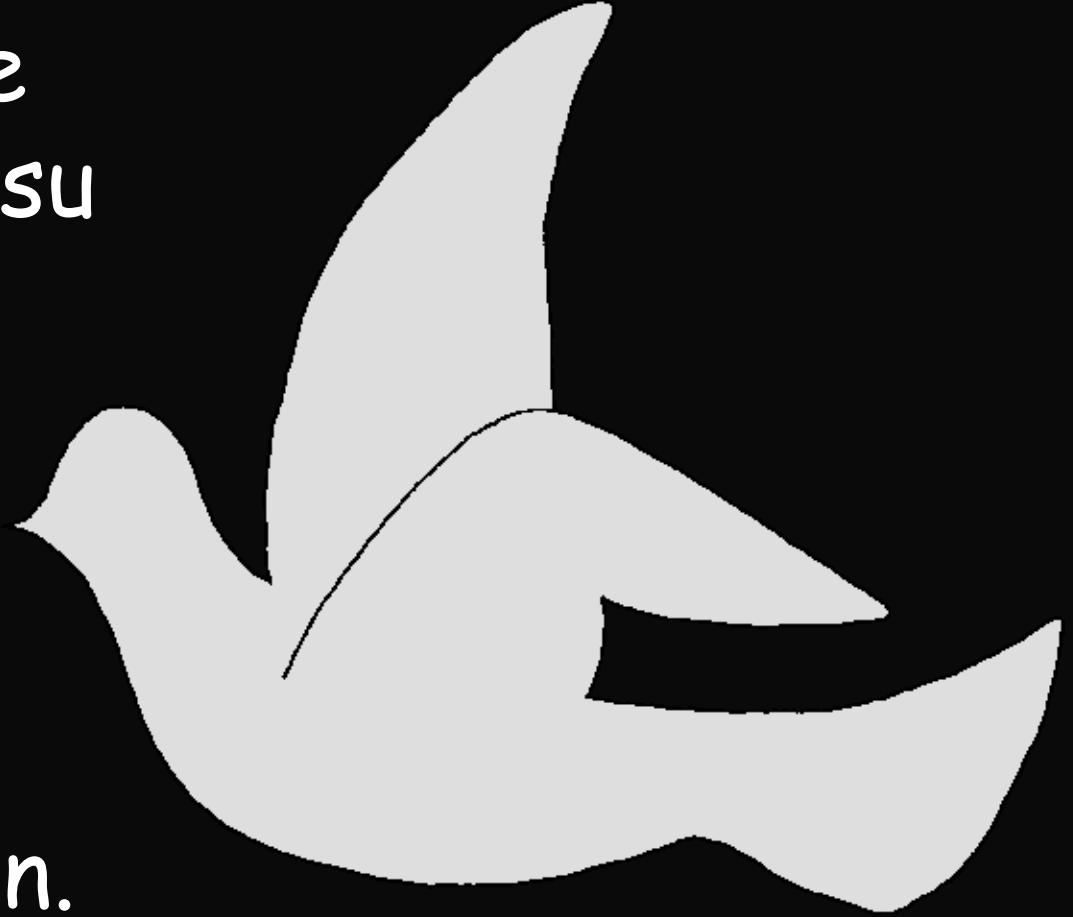
... amayi mayi manayi bedo na ashunwanyi,  
alu bedo na osuyi, abyan ayako bedo na  
akayi. Nlonu, anya vinya, Shekwoyi nu  
bei zhin ma.



Nkmisunyi, Kafin  
Shekwoyi zhin nyaho,  
nyaho-nyahoi to be  
nyin akpe Shekwoyi.  
Aza to bei nyin  
ko aban ko  
anyan. Ko nyaho.



Buzagna ton bedo  
wyegma ton. Eshe  
bedo nkni ton. Nsu  
nkwaduya nyi ton  
bedo nsuyi ton.  
Shekwoyi nu  
bei bwasun nwo  
to Nkmisunyi lon.  
Shekwoyi Wa zhin.





Nkmisunyi, Shekwoyi Wa zhin  
eshe bedo nkni nyi.



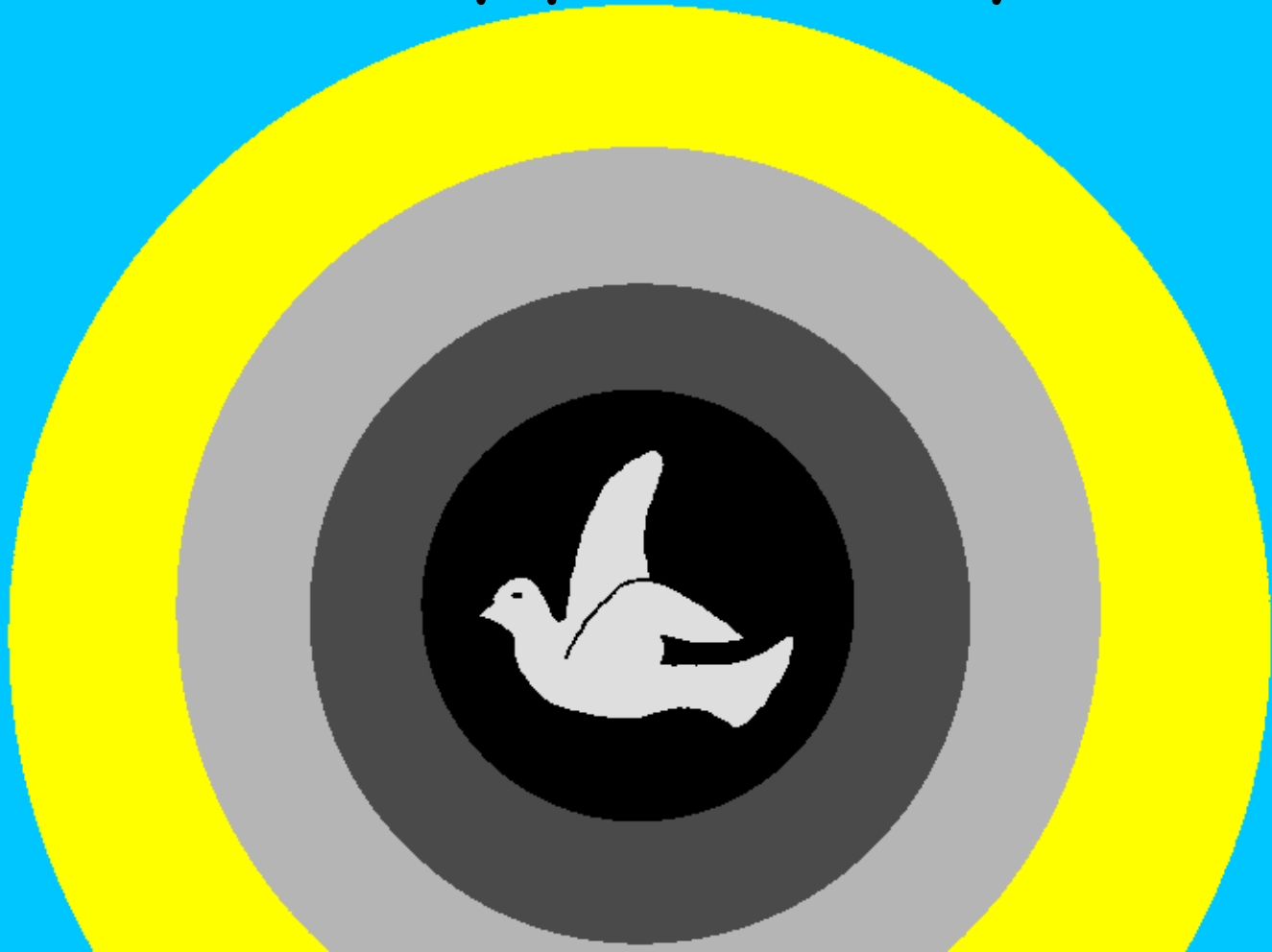
Okni nyi be gni ntna  
nyaho-nyahoi.  
Wyegma ku pui  
anyi awyeba  
befo nko  
loloji.



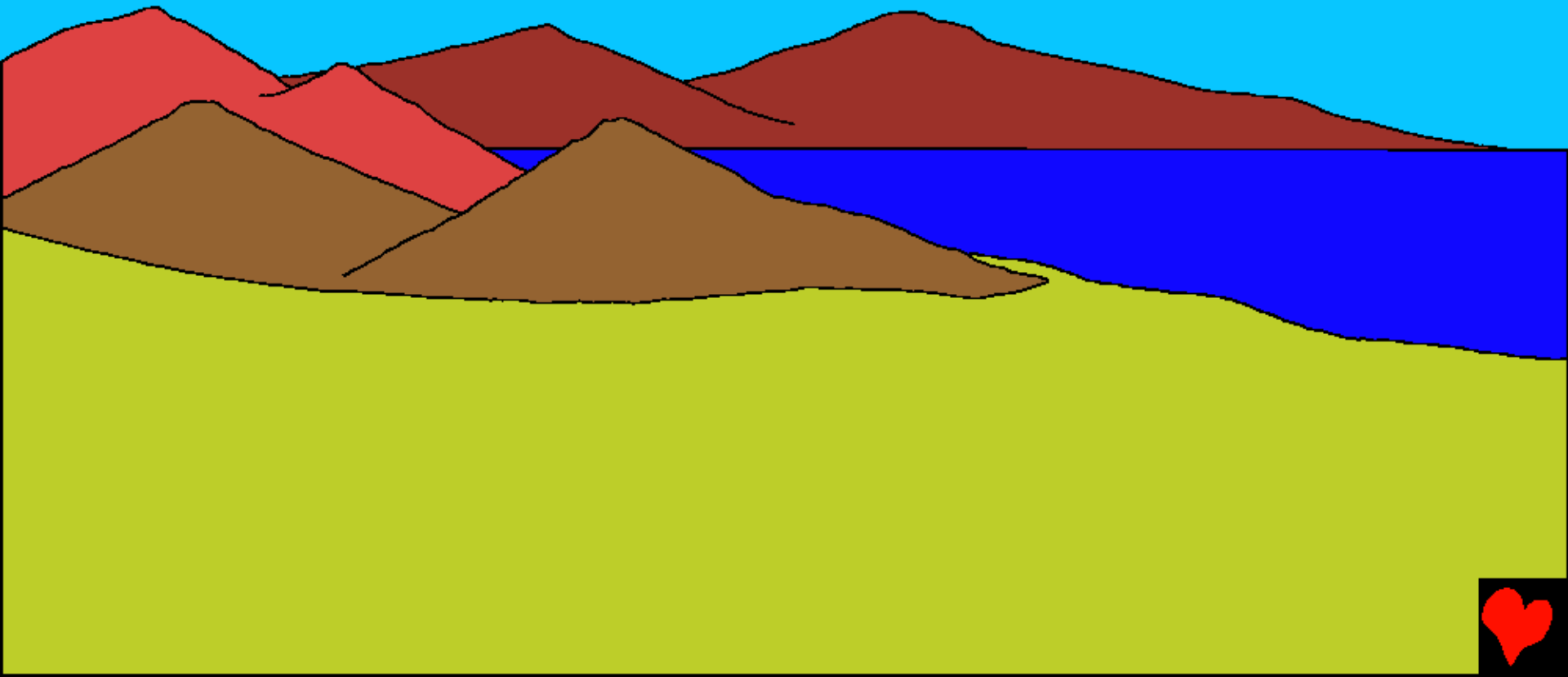
Shekwoyi Wa da ge:  
"Abwa Buzagna".



Buzagna kwa be. Shekwoyi ayi ko  
buzagna Nyipei bedo wyegma Was yiko  
suko. Weshe bedo nlabmiyi Banu bei  
zhin Nyipei kmisunyi.



Nyipei bayi, Shekwoyi Wa be na anyway  
gbo-gbo dna n Eshe sinta. Nyipei tayi,  
Shekwoyi Wa cige, "Okni kawu ko zhin".  
Kwa zhin.



Shekwoyi njesun Wa ga gbe agbegbe  
bedo na amamayi, agbegbe tukwo  
bedo na ashunwany  
ba kunbe.



Weshe bedo nlabmiyi ba bei  
zhin Nyipei tayi nu.



Shekwoyi Wa zhin Nyipei bedo  
n pyayi, bedo na akpasuyi nza  
tami was ba n. Weshe  
bedo n labmiyi kwaze  
Nyipei kninyi nu.





Anyan adnan nyan  
bedo na abmayin  
na aluyi banu bei  
kpen Shekwoyi  
takaida it up to up  
up up up up up up.



Shekwoyi Wa zhin  
obmay yako bedo na  
abibiyi na aluyi gbo-  
gbo banu anuwa na  
anyi ncedo na aluyi  
ba dagma nkni bedo  
n eshe Abwa weshe  
n labmiyi kwa zhin  
Nyipei tnuyi.



Bayan ko, Shekwoyi if Wa jebe da. Wa cige, "Aye Okni kwa be na nya awyewyeiyi." Anyfanya gbo-gbo ba ze anya wyewyei. Abwa a dagba na anya ajeyi. Akna nzhe bedo na awyiyi. Anyafa nya gbo-gbo azhin ba nyipei yi. Abwa weshe n labmiyi ba zhin nyipei tnayi.



Shekwoyi Wa ku nyahozhin Nyipei  
tnanyi-nyaho nkskayi ya. Nyaho-nyahoi  
bei zhin aba ga Zanugbanyi. Nyagyi  
Bei nyi n afa bedo  
anyafanyayi ba  
lo tnutnu ga wo.



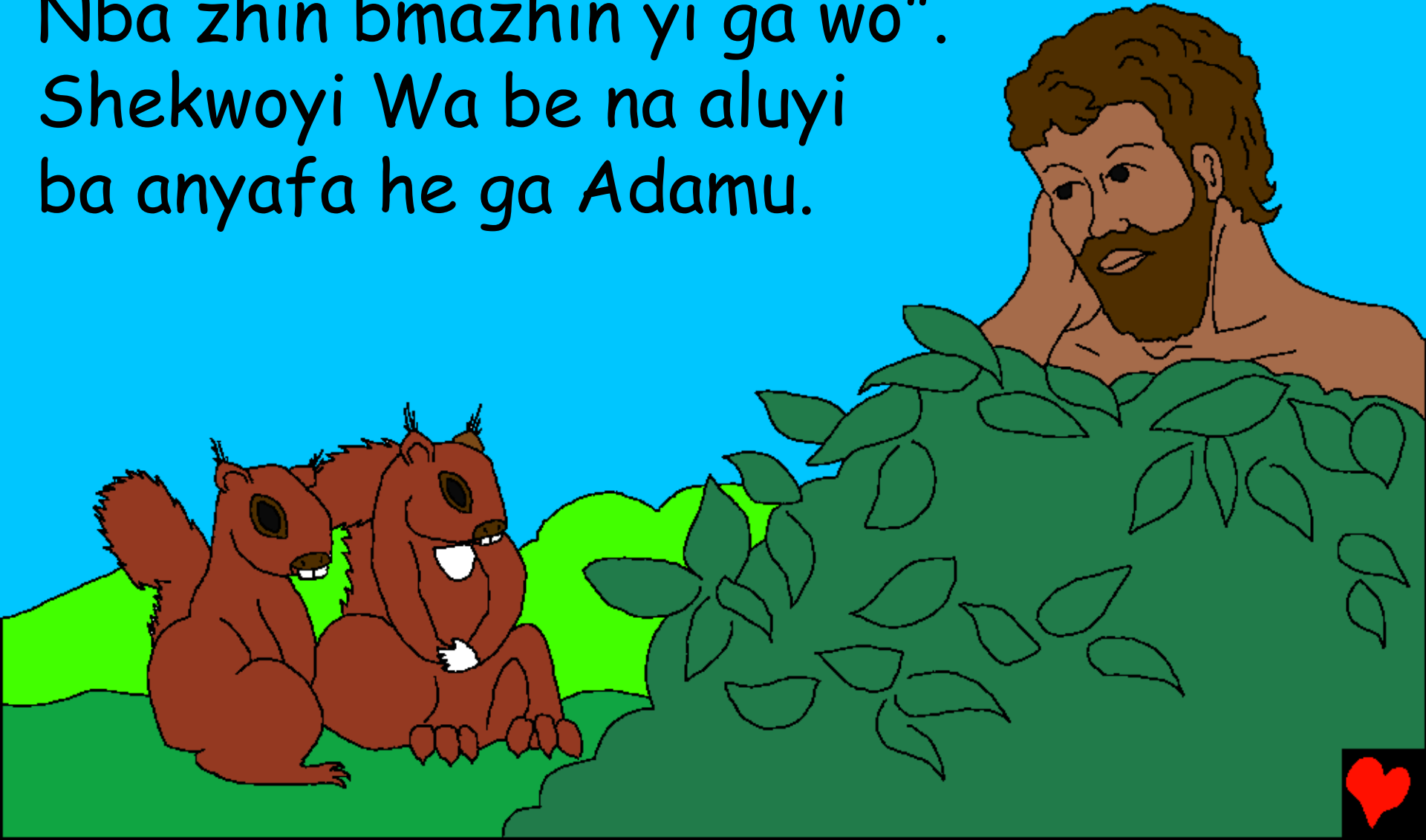
Shekwoyi Wa cige, "Yi belo ya zhin  
Zayinkochi nyi degbe. Wa ze Dagayi tu  
n na anya vinya na anyi". NLONU,  
SHEKWOYI BEI ZHIN  
ZAYINKOCHI  
NWO DEGBE, N  
SHEKWOYI DEGBE  
WA ZHIN WO...



Shekwoyi Wa dabo  
na Adamu. "Gyi  
nyaho-nyahoi nho  
n cepma dna n fa.  
Amma to Gyi nu  
shunwa beyekpe  
manayi n nukwoyin.  
N hagi nshunwa  
ye hoba fi".



Dagayi Shekwoyi Wa cige, "Ko to bmayilo  
nge zanugbaya ba gni n wo gmanyin.  
Nba zhin bmazhin yi ga wo".  
Shekwoyi Wa be na aluyi  
ba anyafa he ga Adamu.



Adamu Wa kpe ma aye vinya.  
Wo Bei nwayoyi wa zhin ce.  
Amma nna aluye bedo na  
anyafanya ajeyi ato bei  
bwa bmazhinyi ngogo na  
Adamu yin.





Shekwoyi Wa be Adamu ngyeyi, ogye  
nloloyi. Wa kni zanugbanyi bmayi bala,  
Shekwoyi Wa zhin Nyikoza  
n Adamu bmayi bala.



Shekwoyi Wa zhin anya vinya  
dna Nyipei tnayi. Nsayi  
Shekwoyi Wa tu Nyipei  
tnaba kwa ze sunsu nyipei.



Dna nfa Eden nya, Adamu bedo n  
Hawawu yi owo nyiko ba be ku  
agmada hinhin bwa ba ga  
Shekwoyi biyaya. Shekwoyi  
nu bei zhin ba DAGAYI,  
ba Nyagayi bedo nba  
Nukoyi.



Esa n Shekwoyi Bei zhin Anya vinya nyi

Nabagyi nko gbin n Shekwoyi Beda,  
Littafi,

nko lo nu

Kmisunyi 1-2

"Aduba Oho Abeda nya ga buzagna."

Zabula 119:130



Kpasunyi



Littafi nabagyi dayi Shekwoyi nwa zhin Yi  
nwo ya kpe Wo ye.

Shekwoyi kpelo nge yiku abo nukoyi zhin,  
nWoyi laifi. Tata laufi ye nya konu zhin  
efi, ama Shekwoyi ye ho lo nmwa Wo tnu  
nwo Nugunyi, Yesu wo fi tu nzundu wo gye  
azhin ntu nha alaifi bo. Yesu was jeze  
be wyewyeiyi Was lo puwa nshemi! Nha ga  
gaiciya ga Yesu ha nya Wo nge Wo ze ho  
alaifi. Wo ba zhin! Wo ma be wa sase nho  
nsaiye, ohoi nce ho ba sase nWoi nyalo nya.



Nho la gaiciya ga nge deye zhin gaiciya nu,  
da deye ga Shekwoyi:

Yesu, mi ngaiciyayi ga nge Ho zhin  
Shekwoyinu, hoi ze zayinkoci hoi fi ntu nmi  
alaifi bo, Hoi nwyeweyeyi lo njesun.  
Sukusuku be mi asase ba ha ze emi alaifi,  
nabai nba bwa wyewyeyi woiwoyi nsaiye,  
nyipeyi gmanyi nbo kun sun nHoi nyalo nya.  
Bma mi zhin ma zhin Ho biyaya ma sase ga  
Ho nge Oho bi. Amin.

Ba Littafi ha dabo n Shekwoyi  
fyegyif-fyegyif! Yohanna 3:1

