

Littafi Abi nya
tnunceyi

Zayinkochi bugba
win yaya



Aka yi: Edward Hughes

Awu yi: Byron Unger; Lazarus
Alastair Paterson

Ago yi: M. Maillot; Tammy S.

Agogna yi: www.christian-translation.com

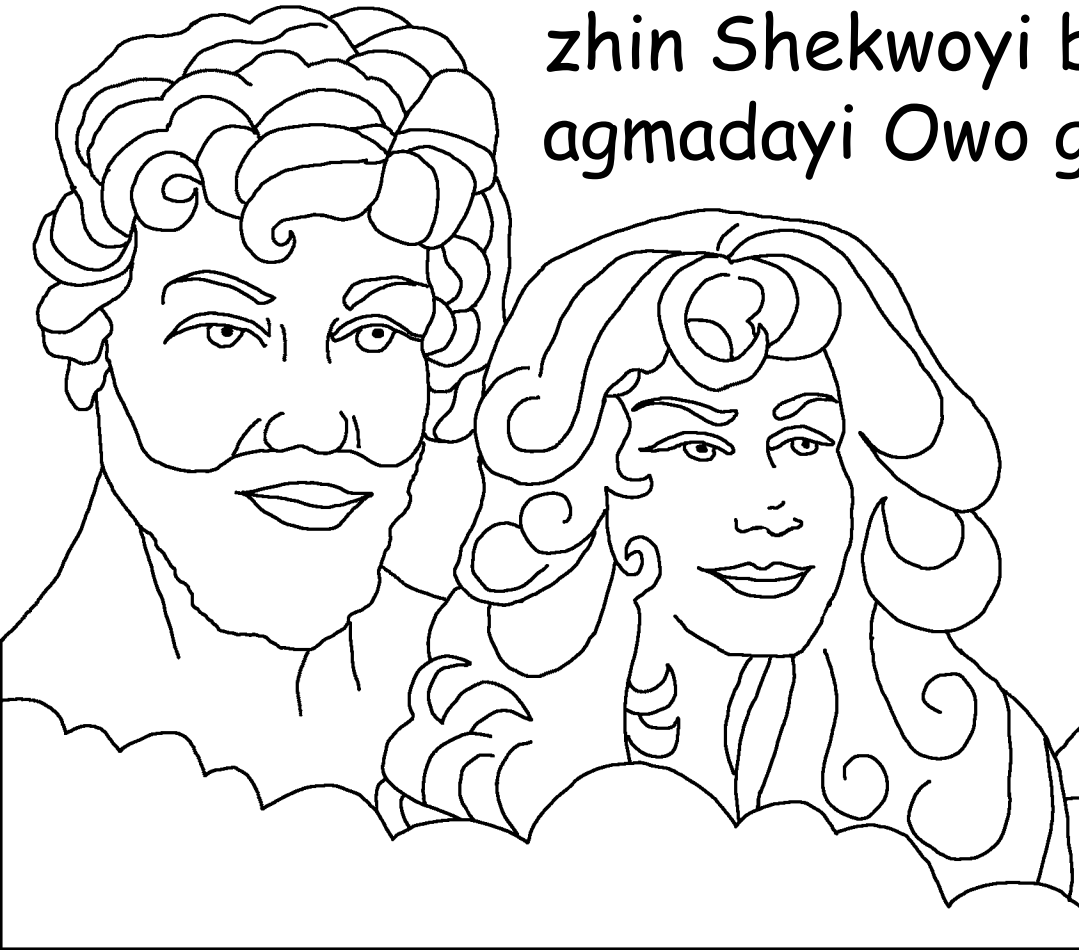
Aza nba zhinko: Bible for Children
www.M1914.org

©2021 Bible for Children, Inc.

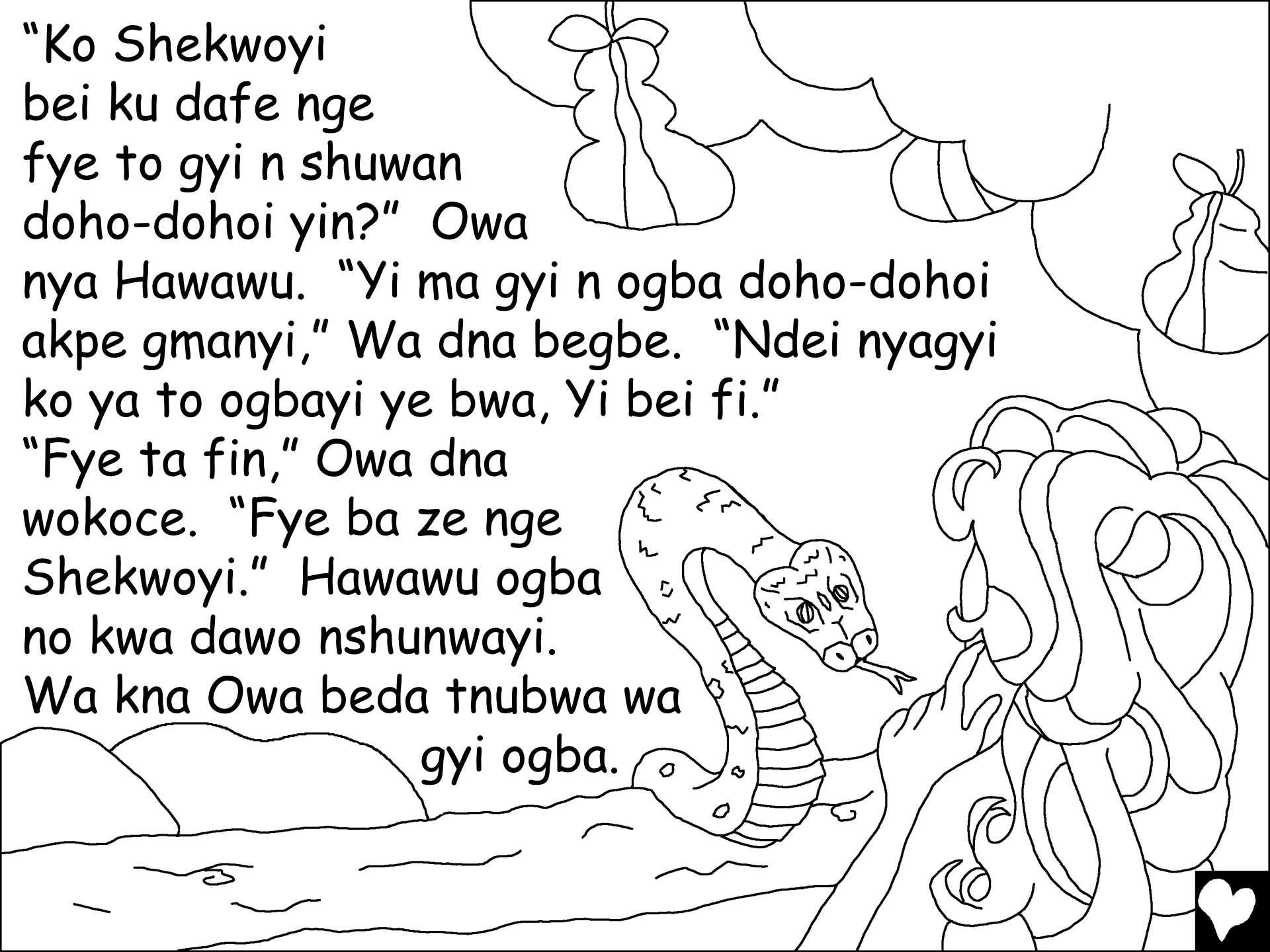
Dama: Ho yenchi lo ha kpan ko ha lu nabagyi ye,
ndeï nho to ye hakun nu.



SHEKWOYI WA ZHIN ANYA
VINYA! Esa n Shekwoyi oza
kmisunyi, Adamu. Wa dna nfa
Eden nwo nyikoyi, Hawawu. Ba Bei
ku agmada bwa. Bai
zhin Shekwoyi biyaya n na
agmadayi Owo gnigu Sai da
nwyihoyi ...



"Ko Shekwoyi bei ku dafe nge fye to gyi n shuwan doho-dohoi yin?" Owa nya Hawawu. "Yi ma gyi n ogba doho-dohoi akpe gmanyi," Wa dna begbe. "Ndei nyagyi ko ya to ogbayi ye bwa, Yi bei fi." "Fye ta fin," Owa dna wokoce. "Fye ba ze nge Shekwoyi." Hawawu ogba no kwa dawo nshunwayi. Wa kna Owa beda tñubwa wa gyi ogba.



Esa n Hawawu wa zhin
tukwognako ga Shekwoyi, was
zhin Adamu Wa gyi ogba yi ce.
Adamu bami wa na ge, "A'a! Mi
ta zun Shekwoyibeda gnan."

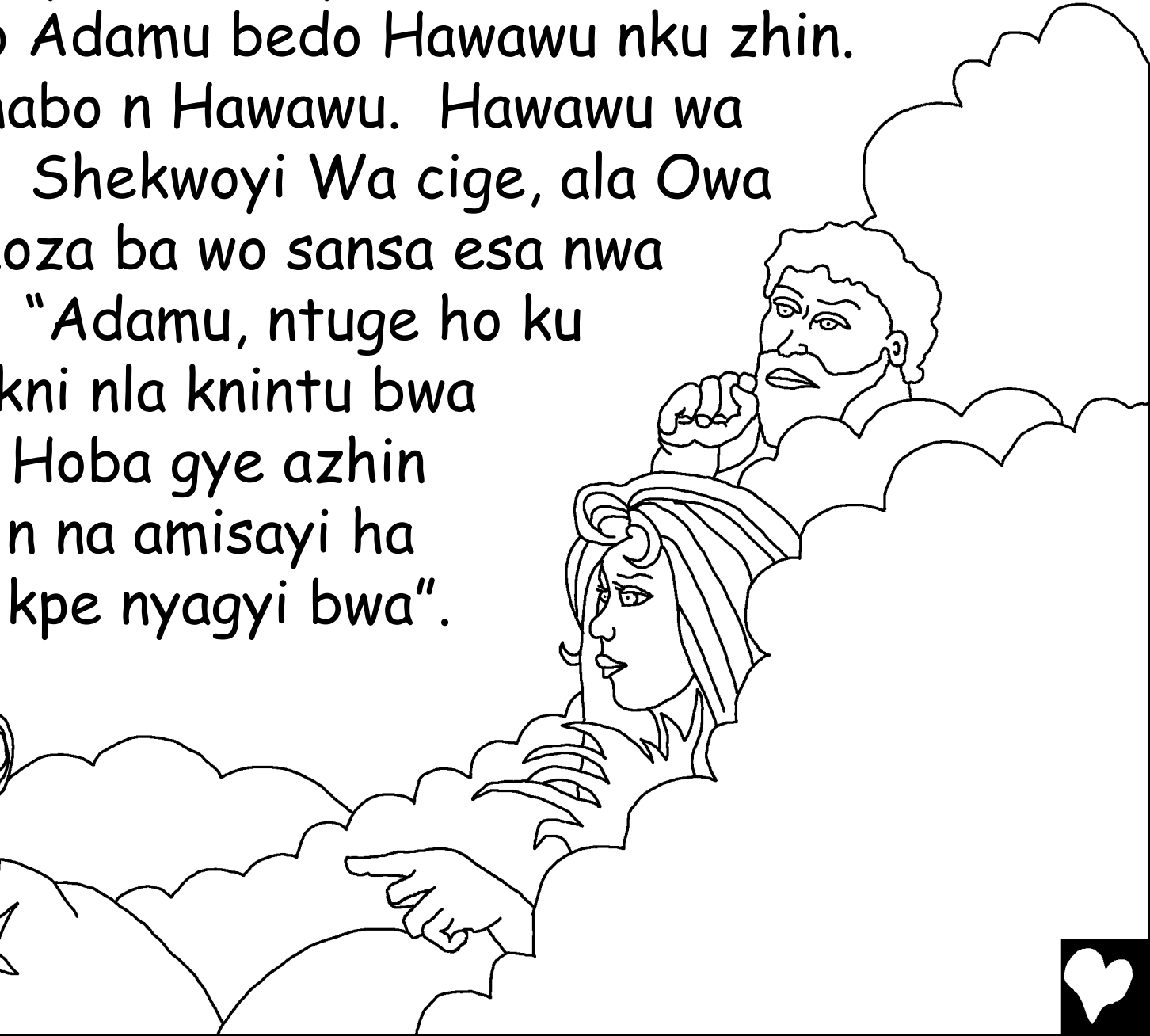
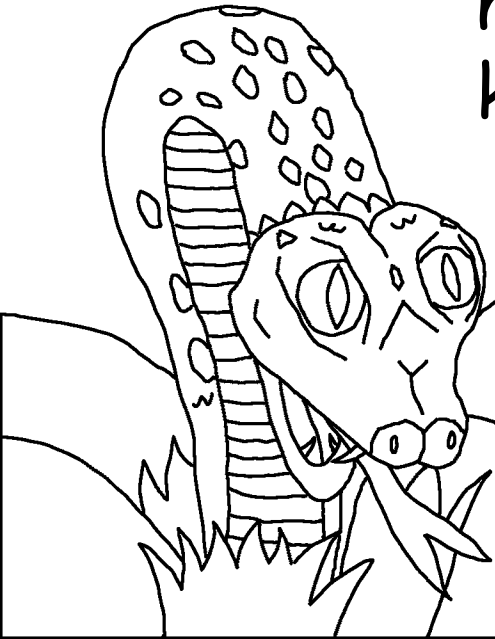




Esa Adamu n Hawawu bei zhin laifi,
ba kpe ge ba zhi nbwatelo yinu. She ba
be chi afintolo baze aje, ba pwui banyi nya
ba ku bwi to ngbegbe nShekwoyi awyeba.



Nweshe gmanyi Shekwoyi Wa be afaba. Wo be ncei kpe obo Adamu bedo Hawawu nku zhin. Adamu wa mabo n Hawawu. Hawawu wa mabo nwayi. Shekwoyi Wa cige, ala Owa tu kni. Nyikoza ba wo sansa esa nwa ma abi ncei. "Adamu, ntuge ho ku laifi zhin, Okni nla knintu bwa na knawuyi. Hoba gye azhin n na amisayi ha kpe nyagyi bwa".

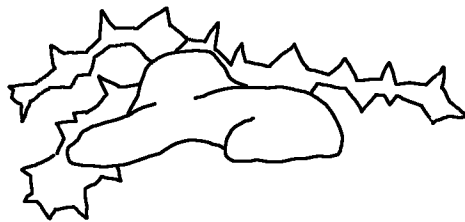


Shekwoyi Wa kun Adamu n
Hawawu ya n ofa manayi.
Ntuge ba zhin laifi, akama ya n
wyewyeiyi-nyaga Shekwoyi nya!





Shekwoyi Wa zhin ebe yako
kwa kun ba ya. Shekwoyi Wa
zhin she opanya ga Adamu
bedo Hawawu. Shekwoyi bei
bwa apa nna na?

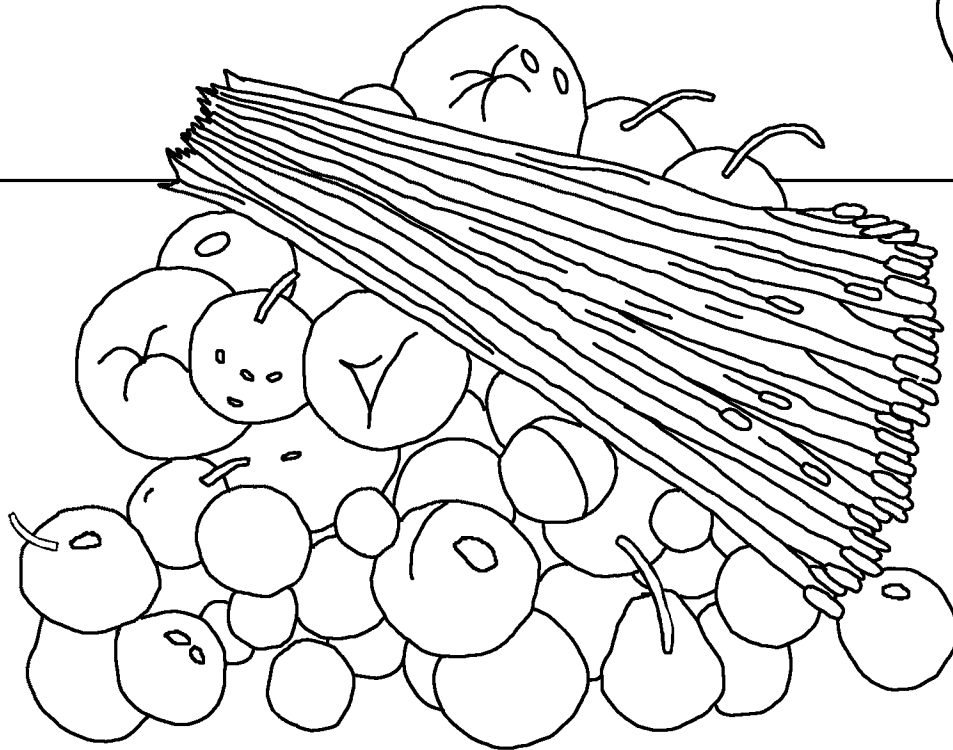


Osa, na abei ma iyali ga Adamu bedo n Hawawu. Oba bi kmisunyi, Kainu, wo Bei zhin fayizanu. Oba bi bayi Abila, Bei zhin naknayi nu. Nwyihoi Kainu wa be Shekwoyi na afintolo gyi gyiyi n chauta mi. Abila wa be na akuungya amanayi

nchauta mi ga Shekwoyi. Chautab ye kwa ku da Shekwoyi agma.



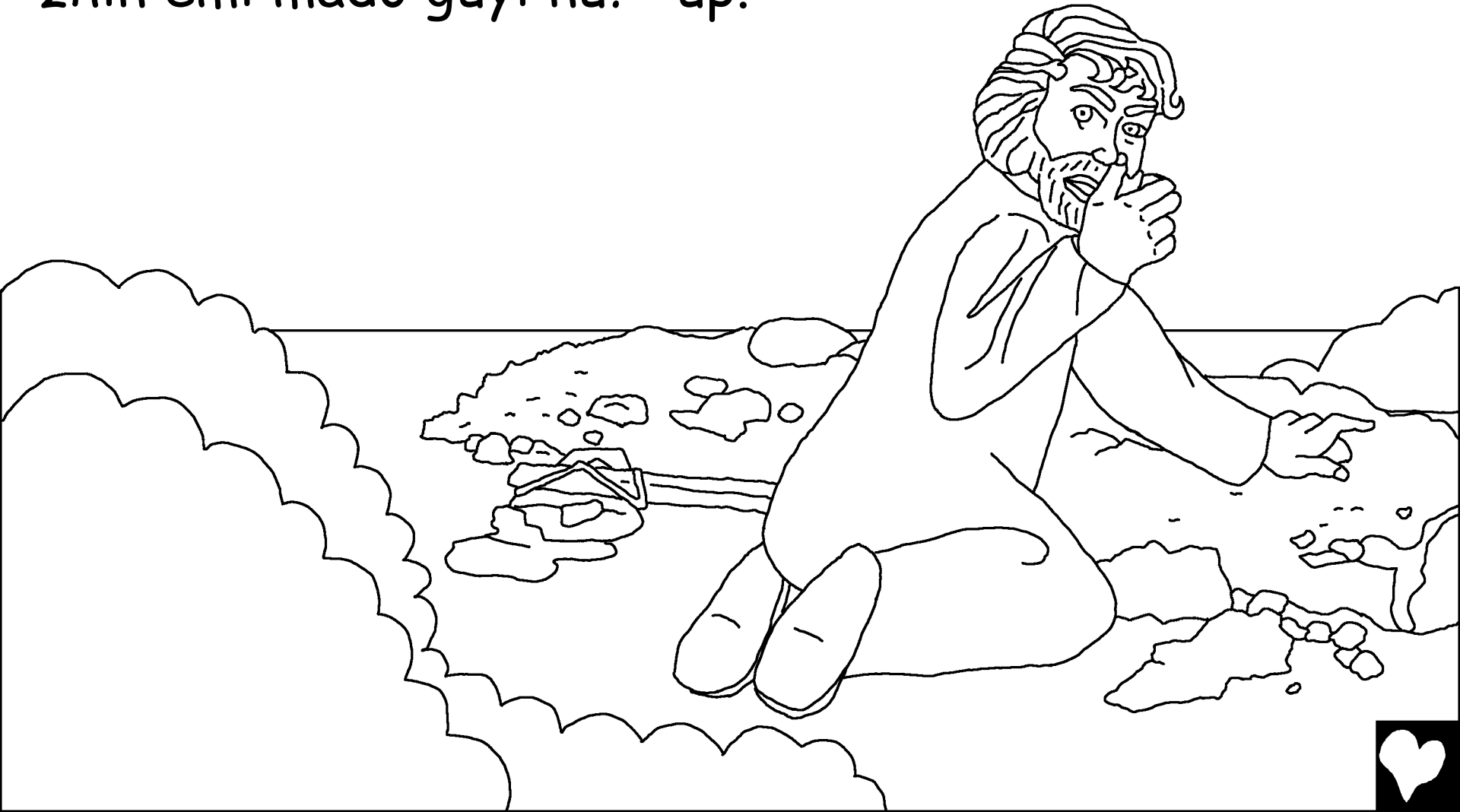
Ce to da Shekwoyi n Kainu
chautayin. Kainu agyi minagyi.
Ama, Shekwoyi Wa cige, "Ndei
ha zhin no manayi, ata go hon?"



Kainu minagyi to bei ya wo
bwan. Nsadohoyi fewyi n fa
wa losa Abila-wa Wu wo!



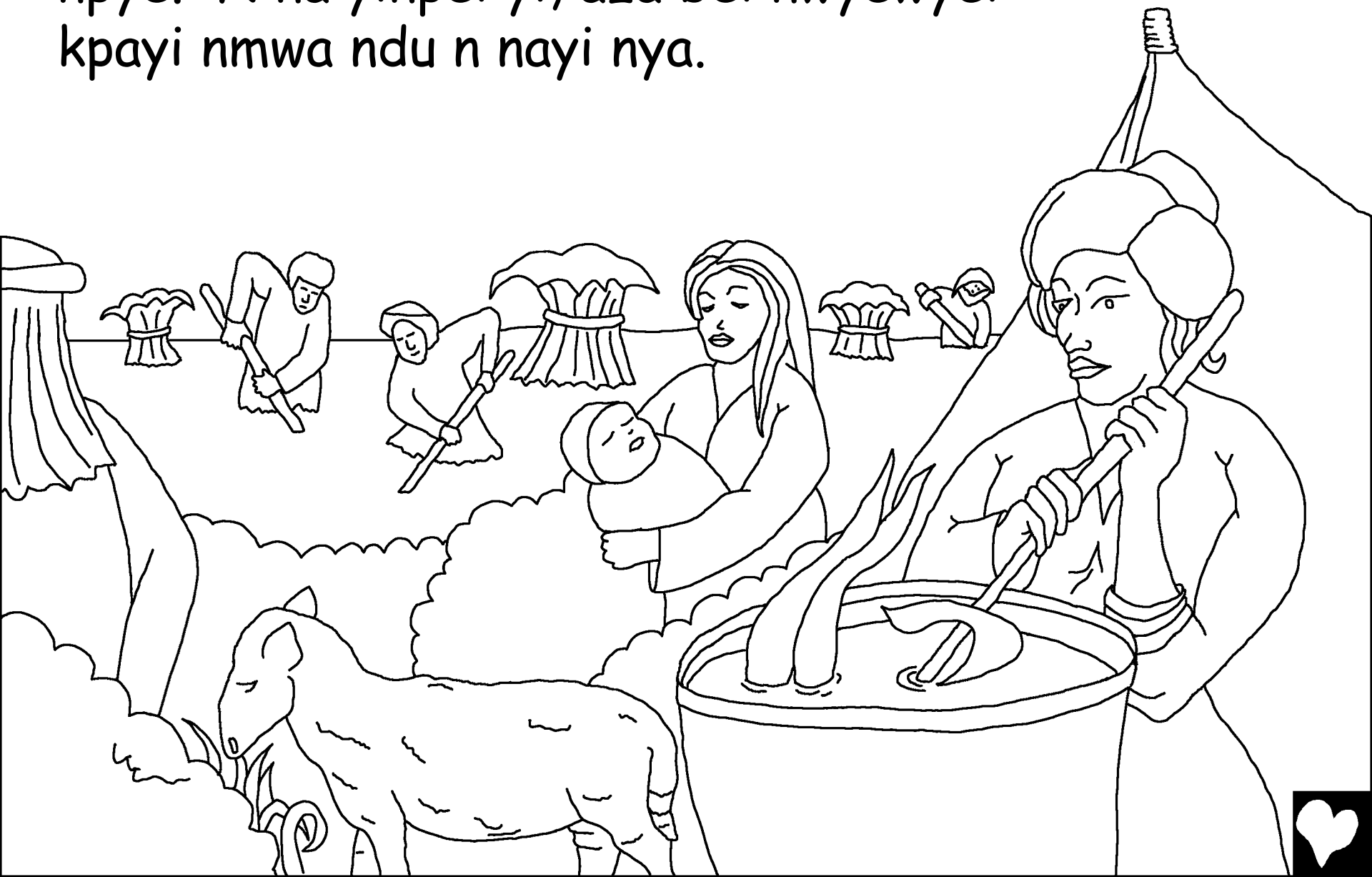
Shekwoyi Wa dabo n Kainu. "Oho mado, Abila gni na?" "Mi ta kpe lon," Kainu ace akata. "Emi nu zhin emi mado guyi nu?" up.



Kainu wa bwui n DAGAYI aba. Wa pamula
n Adamu n Hawawu biyinkoza da. Ba bwa
iyali. Safyewi, Kainu Owo ayawyi
ba nu ozhi nwobei shiko nyi.



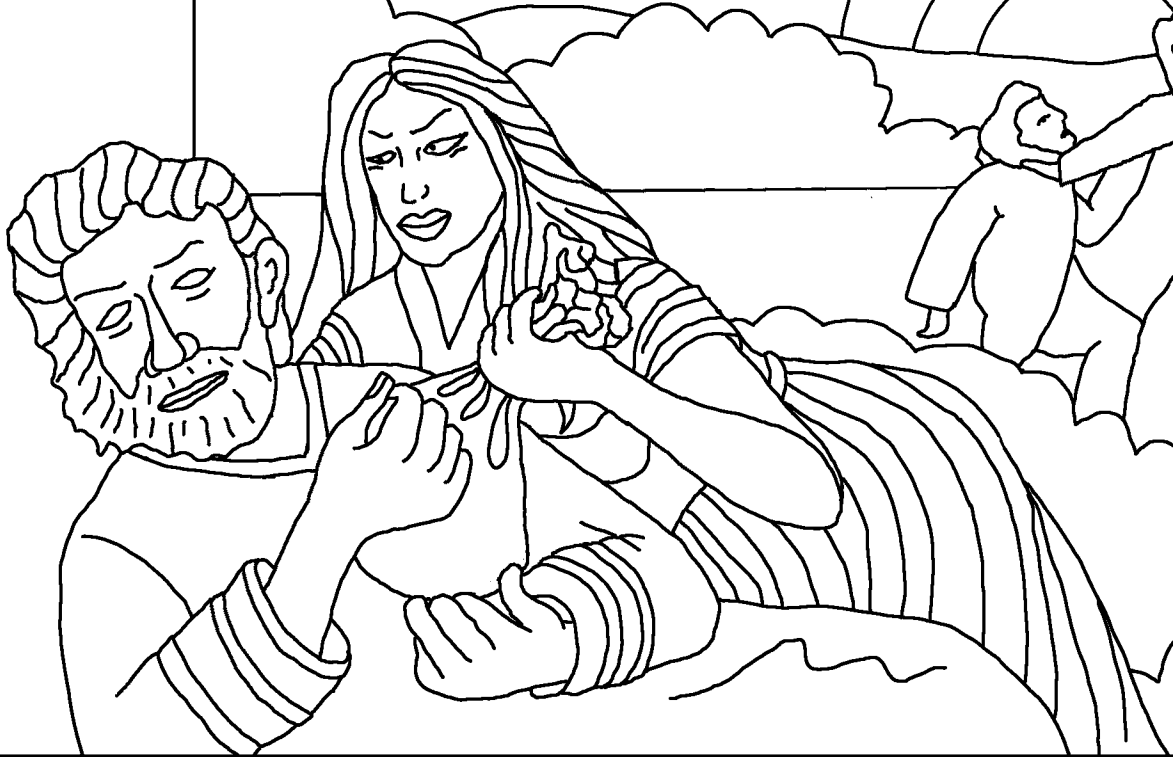
Nsayi, Iyali Adamu nHawawu Yi ba mwa npye. N na yinpei yi, aza bei nwyewyei kpayi nmwa ndu n nanyi nya.



Esá nwo bei ma Owo bi Seti, Hawawu wa
cige, "Shekwoyi agami Seti n Abila apitanu".
Seti bei zhin oza bo manayi zhin yi nu nwo
bei bwa aye 912 wa bwa abi nmwabegye.



N na anyi, aza baku ze aza anukwoyi
nba zamani. Ntucenu, Shekwoyi
wa zo na anyi anya fa nya vinya na
aluyi. Shekwoyi Wa bwa bugbanwu
nza zhin yi. Ama zaknayi wa
zhin bo nShekwoyi
ye ncei.



Oza ye nu Bei zhin Nufu. N bi n Seti be, Nufu
bei zhin oza befyecceyi nu bedo ntna obo manayi
zhin yi. Wa zanzan nkunsun n Shekwoyi.
Was Wu Owo abi ngu ata nge ba ga
Shekwoyi biyaya. Nsaiye
Shekwoyi Wa gye Shi Wo
ba zhin apma Nufu Yi n zokwo
manayi!



Zayinkochi bugba win yaya

Nabagyi nko gbin n Shekwoyi Beda, Littafi,

nko lo nu

Kmisunyi 3-6

"Aduba Oho Abeda nya ga buzagna."

Zabula 119:130





Kpasunyi

| 2



60



Littafi nabagyi dayi Shekwoyi nwa zhin Yi nwo ya kpe Wo ye.

Shekwoyi kpelo nge yiku abo nukoyi zhin,
nWoyi laifi. Tata laufi ye nya konu zhin efi, ama
Shekwoyi ye ho lo nmwa Wo tnu nwo Nugunyi, Yesu wo
fi tu nzundu wo gye azhin ntu nha alaifi bo. Yesu was jeze
be wyewyeiyi Was lo puwa nshemi! Nha ga gaiciya ga Yesu
ha nya Wo nge Wo ze ho alaifi. Wo ba zhin! Wo ma be wa
sase nho nsaiye, ohoi nce ho ba sase nWoi nyalo nya.

Nho la gaiciya ga nge deye zhin gaiciya nu, da deye ga
Shekwoyi: Yesu, mi ngaiciyayi ga nge Ho zhin Shekwoyinu,
hoi ze zayinkoci hoi fi ntu nmi alaifi bo, Hoi nwyewyeiyi
lo njesun. Sukusuku be mi asase ba ha ze emi alaifi,
nabai nba bwa wyewyei woiwoyi nsaiye, nyipeyi gmanyi
nbo kun sun nHoi nyalo nya. Bma mi zhin ma zhin Ho
biyaya ma sase ga Ho nge Oho bi. Amin.

Ba Littafi ha dabo n Shekwoyi fyegyiyi-fyegyiyi! Yohanna 3:1

