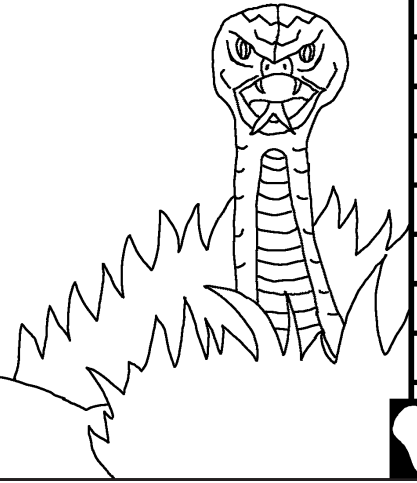


Littafi Abi nya
tnunceyi

Zayinkochi bugba
win yaya



Aka yi: Edward Hughes

Awu yi: Byron Unger; Lazarus
Alastair Paterson

Ago yi: M. Maillot; Tammy S.

Agogna yi: www.christian-translation.com

Aza nba zhinko: Bible for Children
www.M1914.org

©2021 Bible for Children, Inc.

Dama: Ho yenchi lo ha kpan ko ha lu nabagyi ye,
ndeï nho to ye hakun nu.

1

SHEKWOYI WA ZHIN ANYA
VINYA! Esa n Shekwoyi oza
kmisunyi, Adamu. Wa dna nfa
Eden nwo nyikoyi, Hawawu. Ba Bei
ku agmada bwa. Bai
zhin Shekwoyi biyaya n na
agmadayi Owo gnigu Sai da
nwyihoyi ...



2

"Ko Shekwoyi bei ku dafe nge fye to gyi n shuwan doho-dohoi yin?" Owa nya Hawawu. "Yi ma gyi n ogba doho-dohoi akpe gmanyi," Wa dna begbe. "Ndei nyagyi ko ya to ogbanyi ye bwa, Yi bei fi." "Fye ta fin," Owa dna wokoce. "Fye ba ze nge Shekwoyi." Hawawu ogba no kwa dawo nshunwayi. Wa kna Owa beda tñubwa wa gyi ogba.

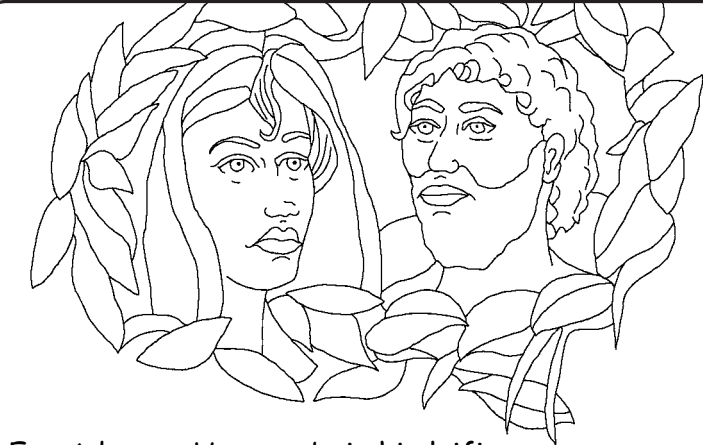


3

Esa n Hawawu wa zhin tukwognako ga Shekwoyi, was zhin Adamu Wa gyi ogba yi ce. Adamu bami wa na ge, "A'a! Mi ta zun Shekwoyibeda gnan."



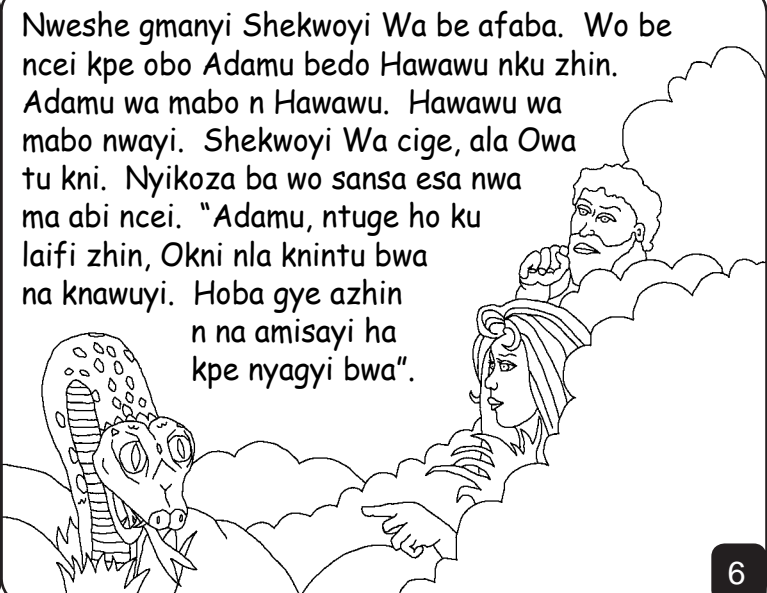
4



Esa Adamu n Hawawu bei zhin laifi, ba kpe ge ba zhi nbwatelo yinu. She ba be chi afintolo baze aje, ba pwui banyi nya ba ku bwi to ngbegbe nShekwoyi awyeba.

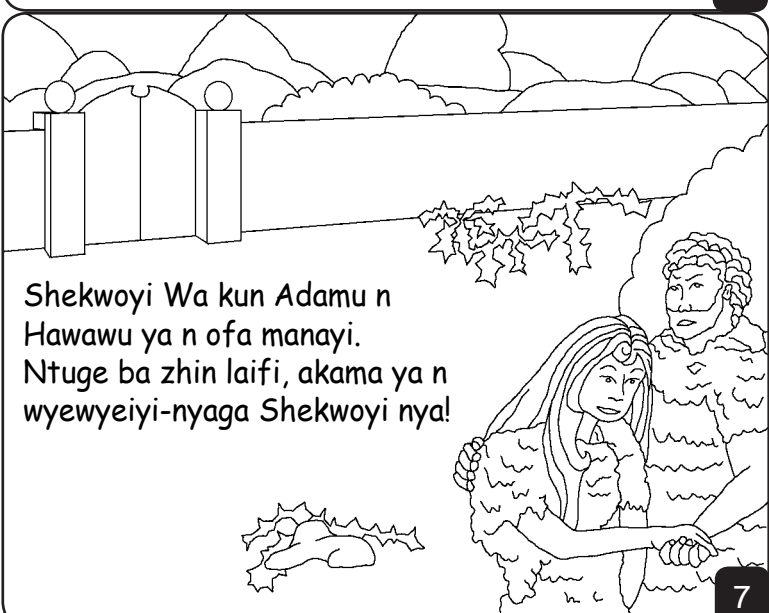
5

Nweshе gmanyi Shekwoyi Wa be afaba. Wo be ncei kpe obo Adamu bedo Hawawu nku zhin. Adamu wa mabo n Hawawu. Hawawu wa mabo nwayi. Shekwoyi Wa cige, ala Owa tu kni. Nyikoza ba wo sansa esa nwa ma abi ncei. "Adamu, ntuge ho ku laifi zhin, Okni nla knintu bwa na knawuyi. Hoba gye azhin n na amisayi ha kpe nyagyi bwa".



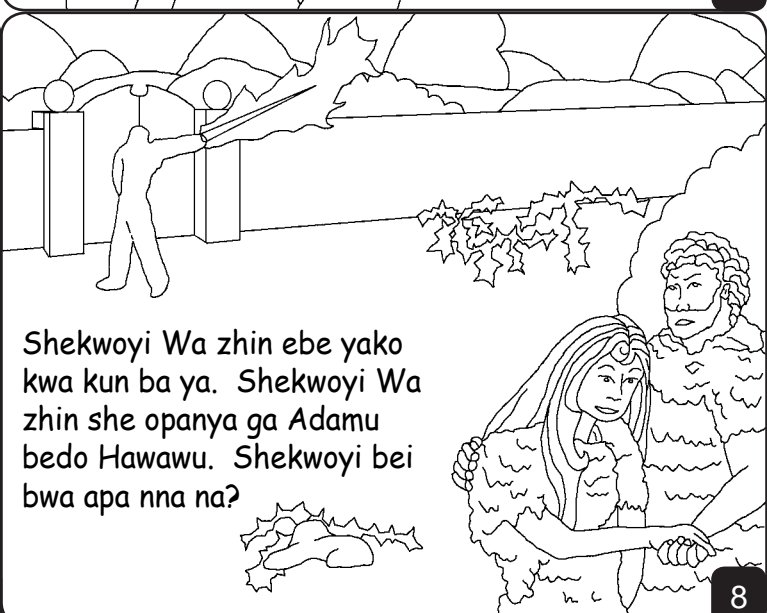
6

Shekwoyi Wa kun Adamu n Hawawu ya n ofa manayi. Ntuge ba zhin laifi, akama ya n wyeweyi-nyaga Shekwoyi nya!



7

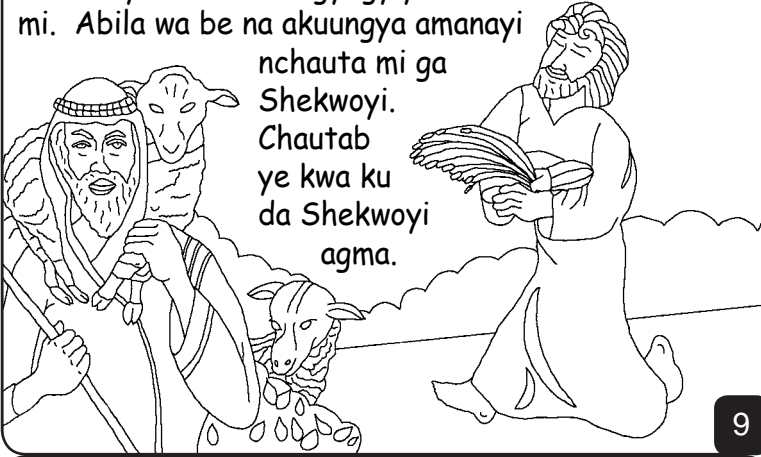
Shekwoyi Wa zhin ebe yako kwa kun ba ya. Shekwoyi Wa zhin she opanya ga Adamu bedo Hawawu. Shekwoyi bei bwa apa nna na?



8

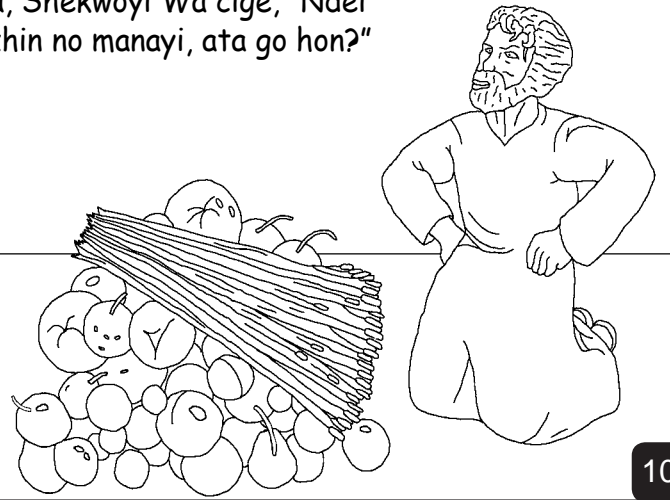
Osa, na abei ma iyali ga Adamu bedo n Hawawu. Oba bi kmisunyi, Kainu, wo Bei zhin fayizanu. Oba bi bayi Abila, Bei zhin naknayi nu. Nwiyihoi Kainu wa be Shekwoyi na afintolo gyi gyiyi n chauta mi. Abila wa be na akuungya amanayi

nchauta mi ga Shekwoyi. Chautab ye kwa ku da Shekwoyi agma.



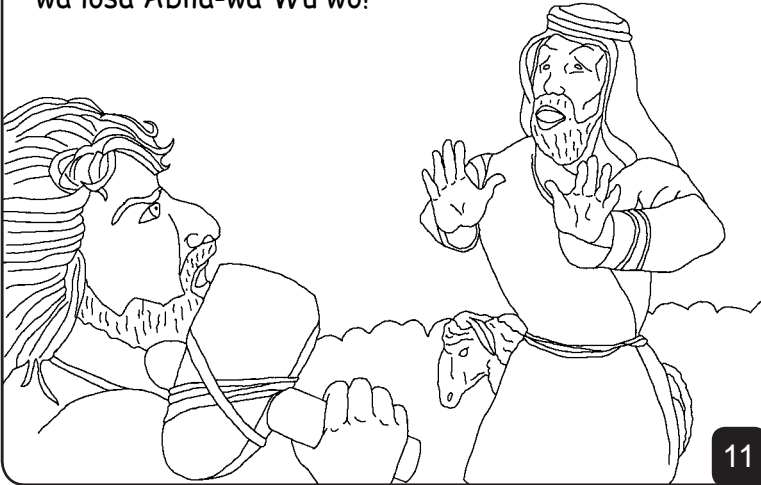
9

Ce to da Shekwoyi n Kainu chautayin. Kainu agyi minagyi. Ama, Shekwoyi Wa cige, "Ndei ha zhin no manayi, ata go hon?"



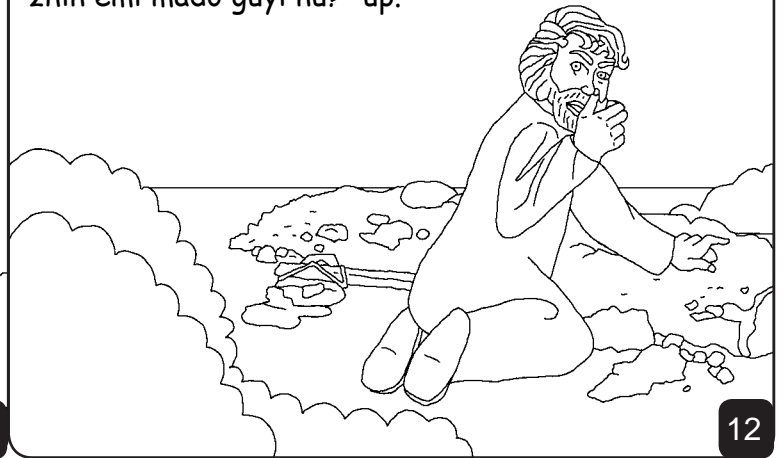
10

Kainu minagyi to bei ya wo bwan. Nsadohoyi fewyi n fa wa losa Abila-wa Wu wo!



11

Shekwoyi Wa dabo n Kainu. "Oho mado, Abila gni na?" "Mi ta kpe lon," Kainu ace akata. "Emi nu zhin emi mado guyi nu?" up.



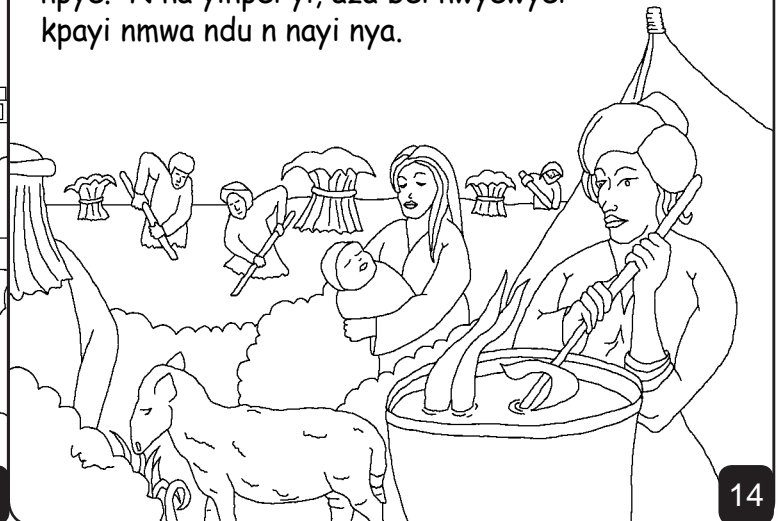
12

Kainu wa bwui n DAGAYI aba. Wa pamula n Adamu n Hawawu biyinkoza da. Ba bwa iyali. Safyewi, Kainu Owo ayawyi ba nu ozhi nwobei shiko nyi.



13

Nsayi, Iyali Adamu nHawawu Yi ba mwa npye. N na yinpei yi, aza bei nwyewyei kpayi nmwa ndu n nayi nya.



14

Esa nwo bei ma Owo bi Seti, Hawawu wa cige, "Shekwoyi agami Seti n Abila apitanu". Seti bei zhin oza bo manayi zhin yi nu nwo bei bwa aye 912 wa bwa abi nmwabegye.



15

N na anyi, aza baku ze aza anukwoyi nba zamani. Ntucenu, Shekwoyi wa zo na anyi anya fa nya vinya na aluyi. Shekwoyi Wa bwa bugbanwu nza zhin yi. Ama zaknayi wa zhin bo nShekwoyi ye ncei.



16

Oza ye nu Bei zhin Nufu. N bi n Seti be, Nufu bei zhin oza befyecayi nu bedo ntna obo manayi zhin yi. Wa zanzan nkunsun n Shekwoyi. Was Wu Owo abi ngu ata nge ba ga Shekwoyi biyaya. Nsaiye Shekwoyi Wa gye Shi Wo ba zhin apma Nufu Yi n zokwo manayi!



17

Zayinkochi bugba win yaya

Nabagyi nko gbin n Shekwoyi Beda, Littafi,

nko lo nu

Kmisunyi 3-6

"Aduba Oho Abeda nya ga buzagna."
Zabula 119:130

18

Kpasunyi

2

60

19

Littafi nabagyi dayi Shekwoyi nwa zhin Yi nwo ya kpe Wo ye.

Shekwoyi kpelo nge yiku abo nukoyi zhin, nWoyi laifi. Tata laufi ye nya konu zhin efi, ama Shekwoyi ye ho lo nmwa Wo tnu nwo Nugunyi, Yesu wo fi tu nzundu wo gye azhin ntu nha alaifi bo. Yesu was jeze be wyeweyeyi Was lo puwa nshemi! Nha ga gaiciya ga Yesu ha nya Wo nge Wo ze ho alaifi. Wo ba zhin! Wo ma be wa sase nho nsaiye, ohoi nce ho ba sase nWoi nyalo nya.

Nho la gaiciya ga nge deye zhin gaiciya nu, da deye ga Shekwoyi: Yesu, mi ngaiciyayi ga nge Ho zhin Shekwoyinu, hoi ze zayinkochi hoi fi ntu nmi alaifi bo, Hoi nwyeweyeyi lo njesun. Sucusuku be mi asase ba ha ze emi alaifi, nabai nba bwa wyeweyeyi woiwoyi nsaiye, nyipeyi gmanyi nbo kun sun nHoi nyalo nya. Bma mi zhin ma zhin Ho biyaya ma sase ga Ho nge Oho bi. Amin.

Ba Littafi ha dabo n Shekwoyi fyegyeyi-fyegyeyi! Yohanna 3:1

20