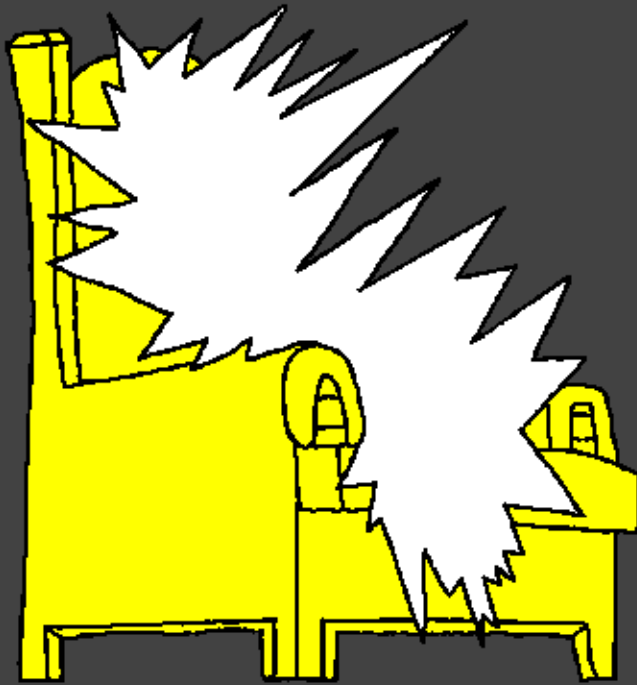


Littafi Abi nya
tnunceyi



Eshe,
Shekwoyi
puwa
Manayi



Aka yi: Edward Hughes

Awu yi: Lazarus
Alastair Paterson

Ago yi: Sarah S.

Agogna yi: www.christian-translation.com

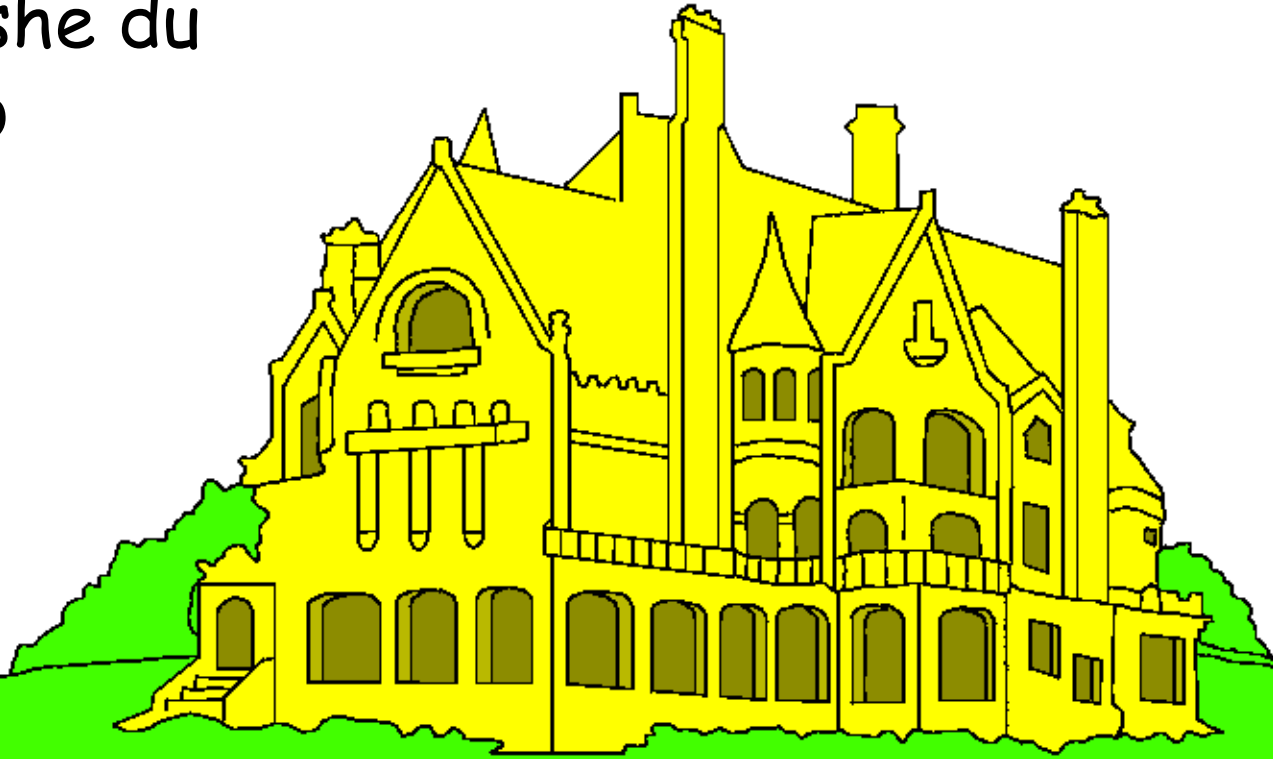
Aza nba zhinko: Bible for Children
www.M1914.org

©2021 Bible for Children, Inc.

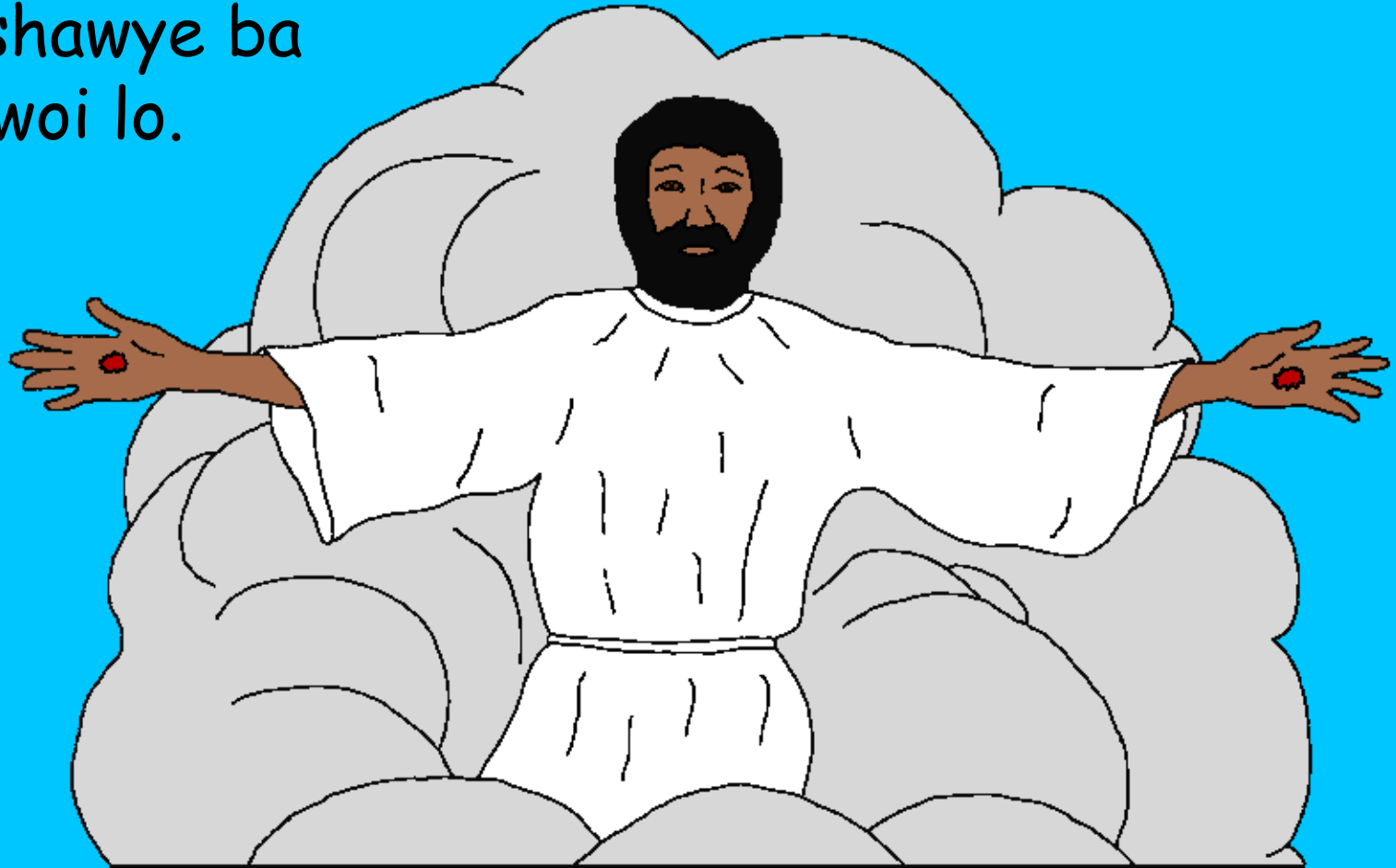
Dama: Ho yenchi lo ha kpan ko ha lu nabagyi ye,
ndeï nho to ye hakun nu.



Esa Yesu dna na anyi Wa da owo abala eshe bo. Wa Yi ko "Emi Dada Puwa", wa jeda gye apuwa lo nmwa nbo. Puwa gmanyi nlapata, puwa biya-bmiya yi. Eshe du anyilo npata bedo nbmiya-bmiya yi ndu anyi puwa.



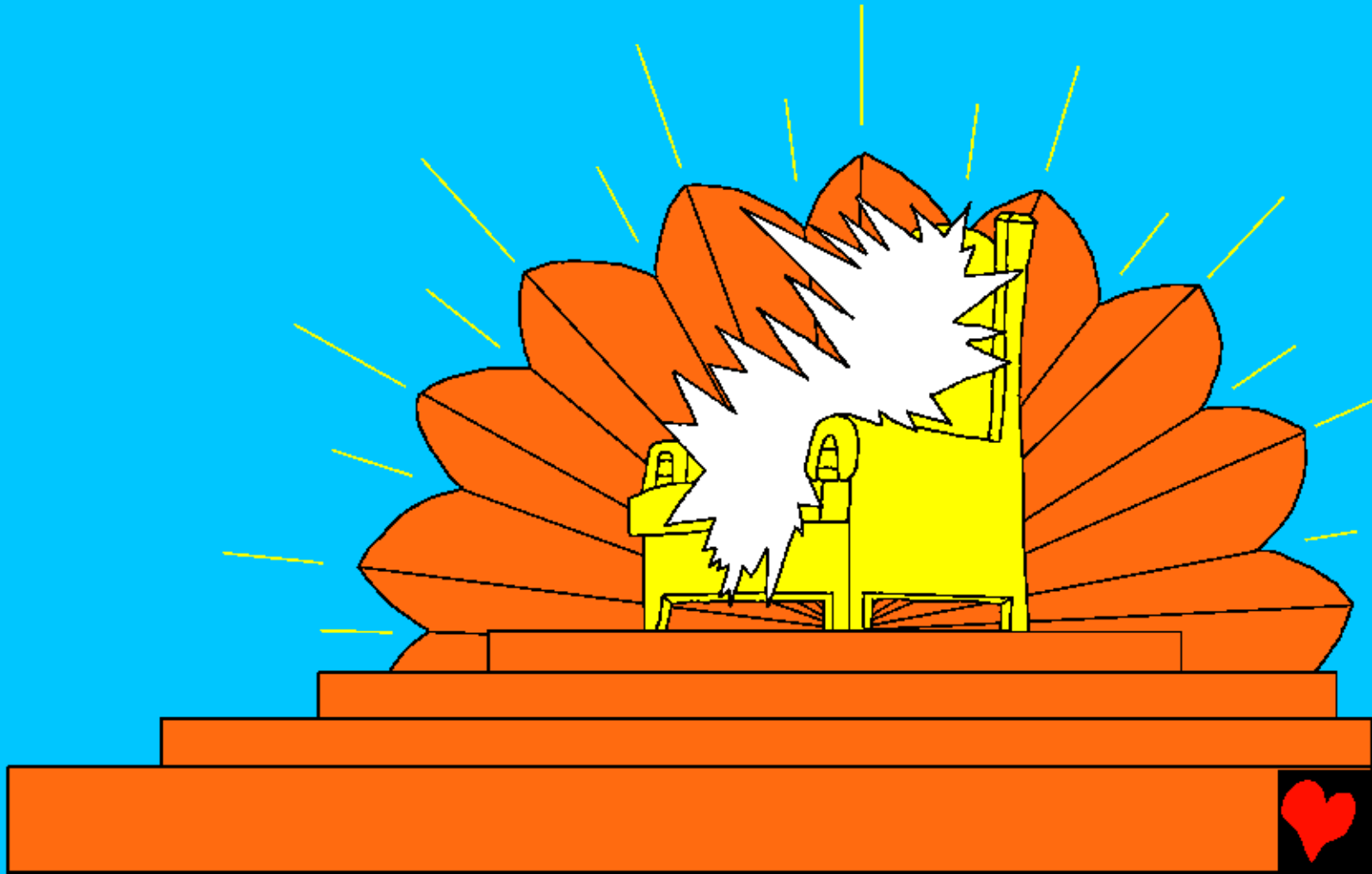
Yesu da gye, "Mi lo mi zhin ababa ga fye. Nmalo ma zhin ababa gafye nba jeze be njesun ma go fye nmiyin". Yesu bei lo eshe nu esa nwa laka nfi. Nwa abala awoyechekonu nwo be laka dna n eshe mi enyi ko go wo shi ba bei shawye ba gye woi lo.



Tun sayi, Aviyyi ba ku pa Yesu alkawali Wa jeze be wa
be da ba. Yesu wa cige, Wi ba jeze ntna sawunyayi
n na to ncednam. Amma aviyyi nbaku fi kafin
Wo jeze be ma? Littafi da gye, ba
bei lo eshe cewo ba kunsun n
Yesu yi. To ha gni n nanyi,
ko nu wu ge ho lo
n Dagayi aba.



Yohanna Bewyegye, Littafi kmaknanyi, dayi Shi eshe wu. Aba manayi nu, Shekwoyi puwa. Shekwoyi lo na abahobahoyi amma Owo ebemi lo n eshe nu.



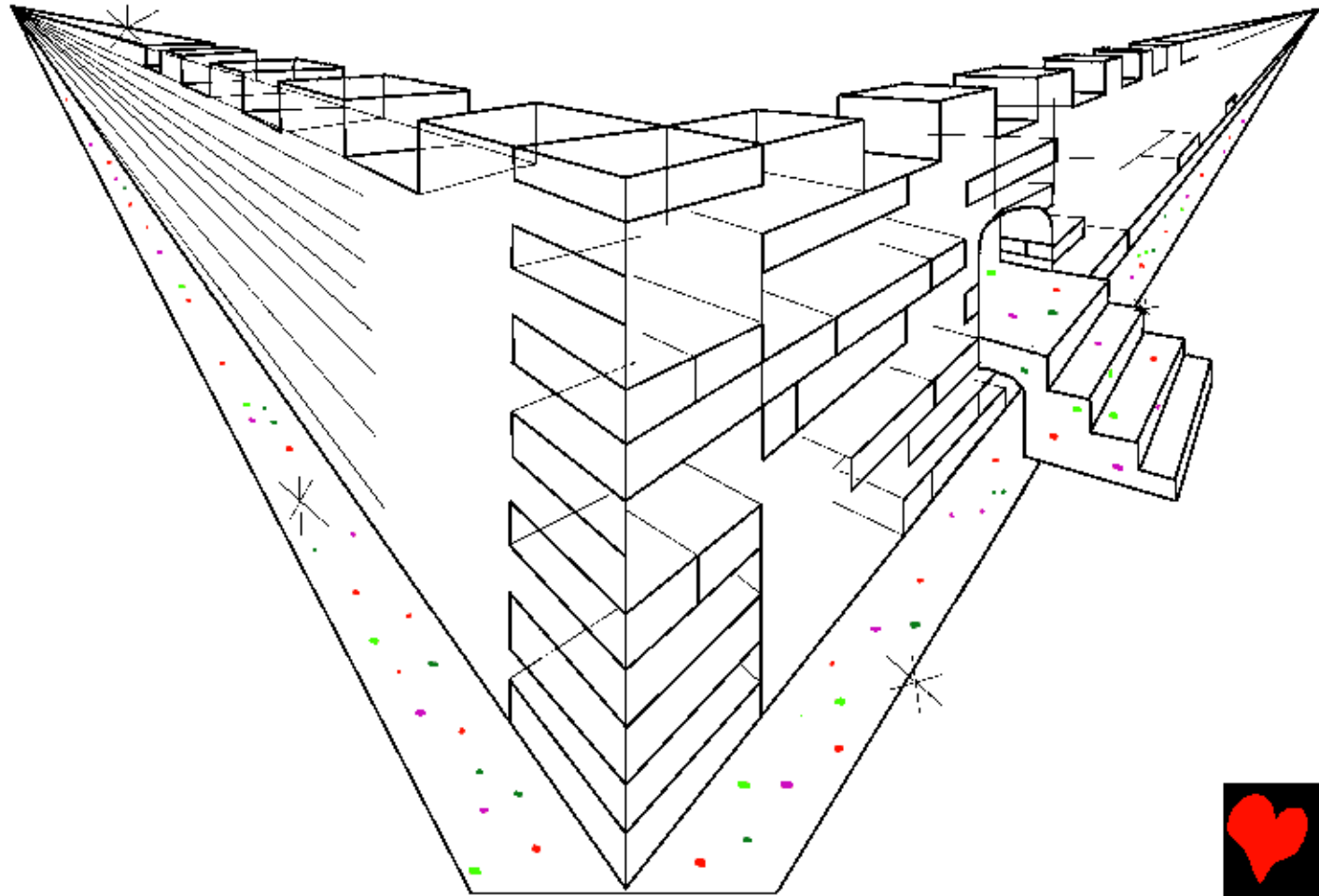
Amalaika bedo na azajeyi n eshe
mi ba zhin Shekwoyi sujada n
eshe. Nlonu Shekwoyi aza
nbaku fi ba nyi du eshe mi.
Ba ko anyi manayi lalatu
nya ga Shekwoyi.



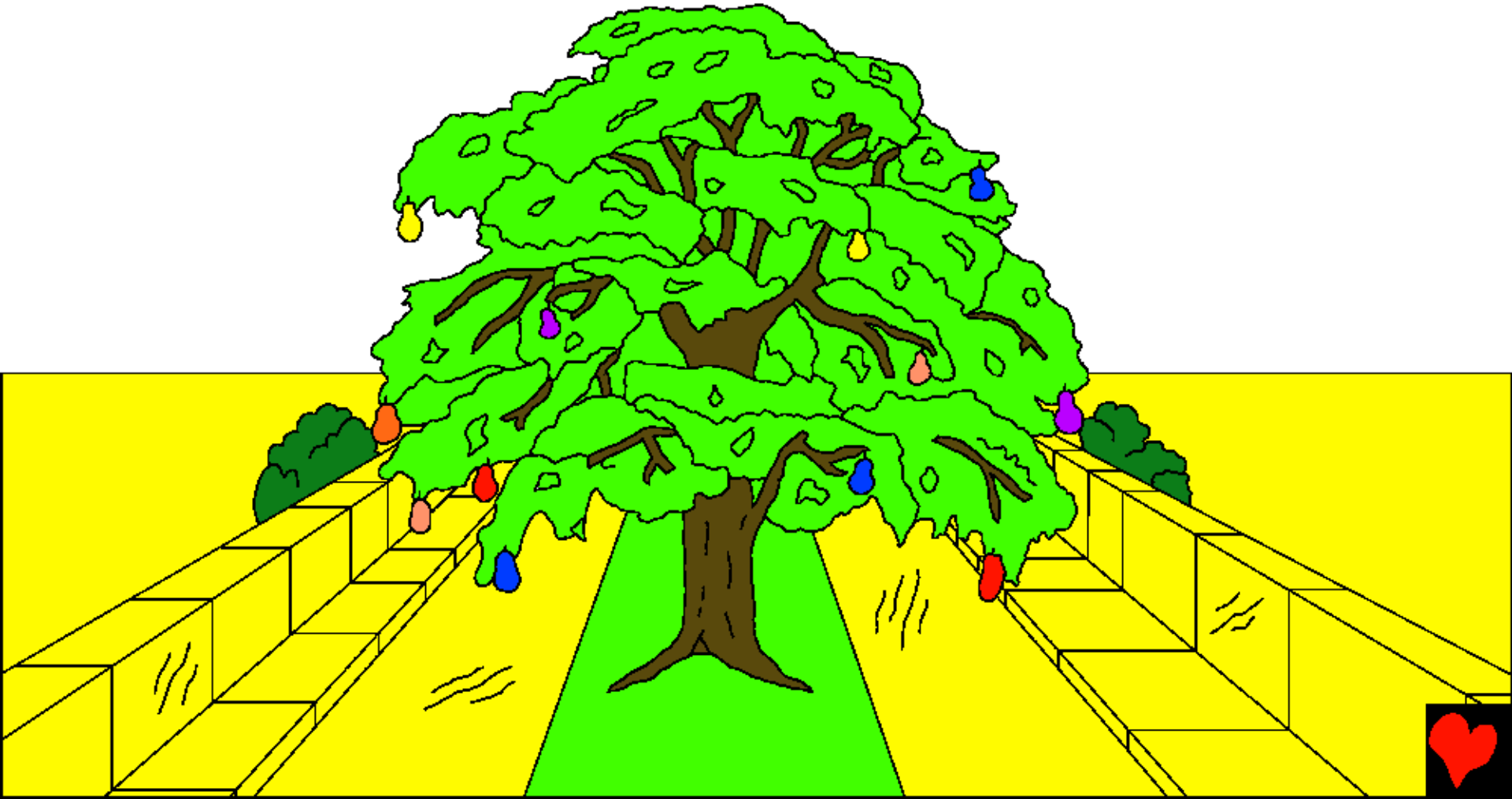
Abeda nyi n na anyi nba ko: HO KUNCELO
NTUGE OHO NU NA GNIYI YA NHA AMIYI
NA ABYEDO BEDO NA AKNI
DO YI HOI ZE YI ASU BEDO
NA A PRISTI YI NSHEKWOYI
ABA. (Yohanna Bewyegye 5:9)



Nlittafi kmankna ko ku wu shi eshe wu ngye
"Jelusalem woiwoiyi". Ko mwa kpa nyakunyipa nbin.
Nmi na jasper akutayi agyewye dei-dei. Nmi na
abegyenya bedo na akuta manayi nko ya mi nyakunyi
pa ngmigni cewo na akala manayi ba bmina na piya yi!



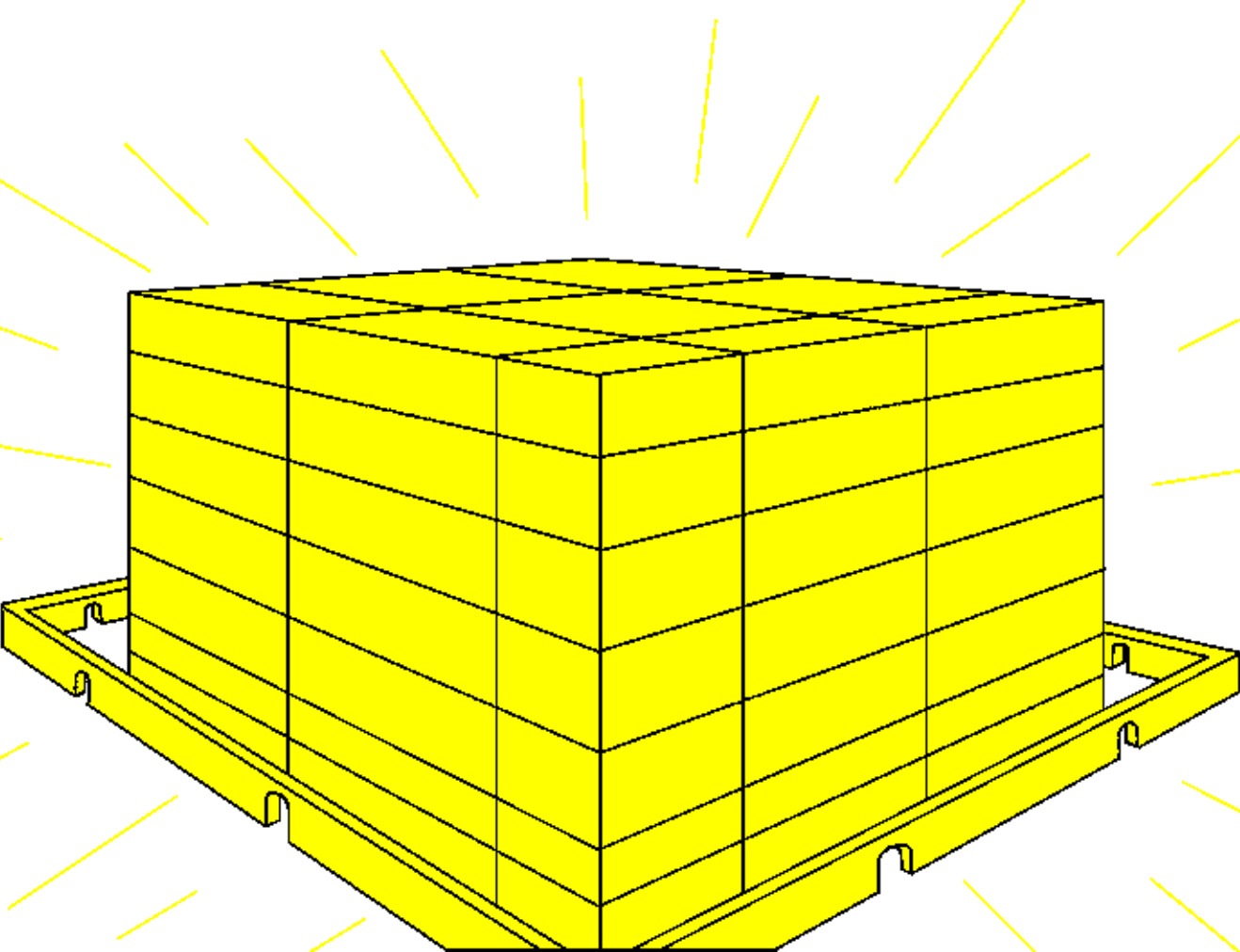
Apiya ye aduba ata gu ban sam-sam. Yi lo mi Yi shawye ... WOW! Eshe ngna bmiyalo n emi. Azoko nmi na zinaliyayi n bmiya ngye aglasi. Azoko nba zhin na a zinaliyayi.



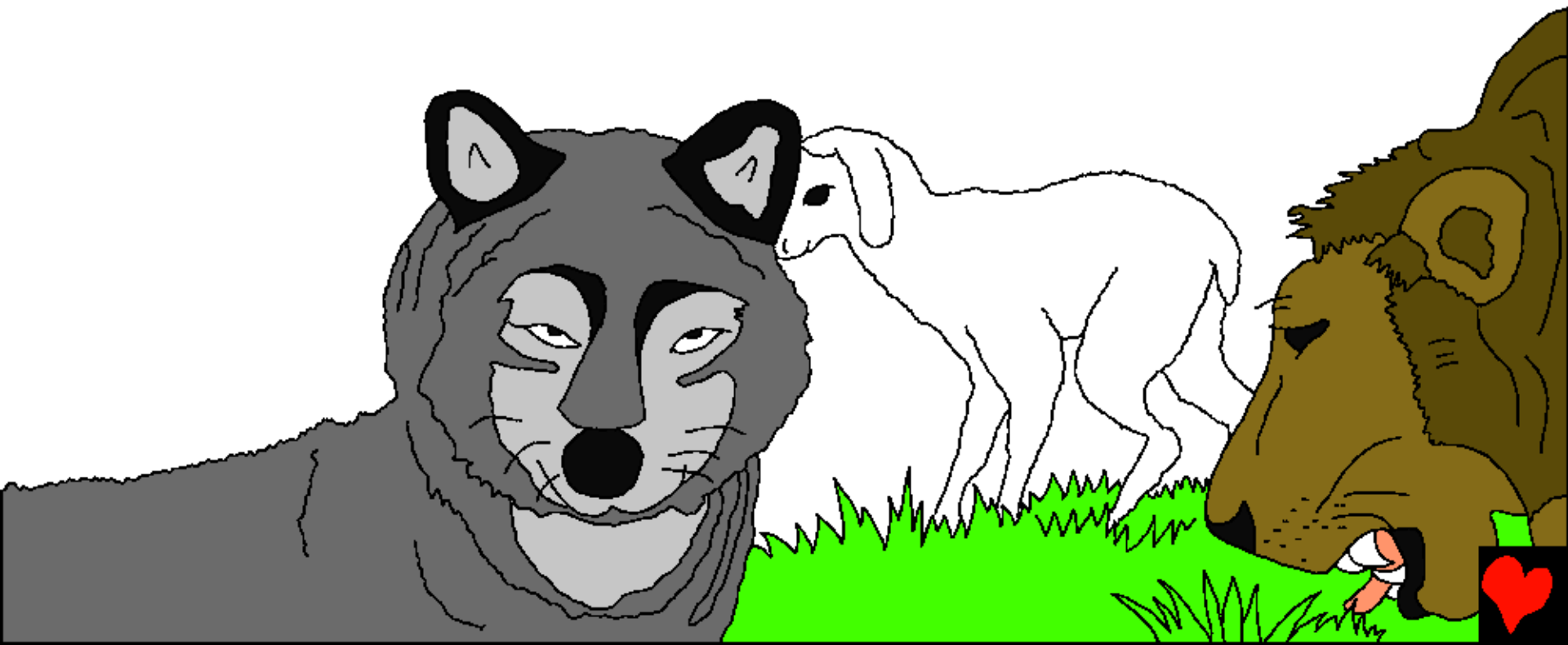
Nuwa manayi nko zhe ndna nuwa wyewyei nya nkun n Shekwoyi ebemi. Na abahobahoyi n dna shunwa wyewyei nya lo, na bei bwa ko n Gadi Eden nya. Shunya nkonyi ko gyi egba gbo-gbo awoceyi aba opya doho-dohoi. Afintolo ba ka azhe gna.



Eshe to n nyipeyi bedo pyayi apmayi lon n buzanga bon. Shekwoyi mwamwa nu nuko n buzangna wowoyi. Ato taba nsuko zhin nbon.



Ko anya fanya n eshemi ba lo gbo-gbo. Nba wakna ntna minagyi. Anyafanya aje na Akungya ba gyi nyagyi nkunsun. Ko agbesi ma gyi Anya na anyafayan ajeyi. DAGAYI nkuda, "Ba ta wu she bwan agna ba zo na ajeyi nMi Gyi-gyi epen."



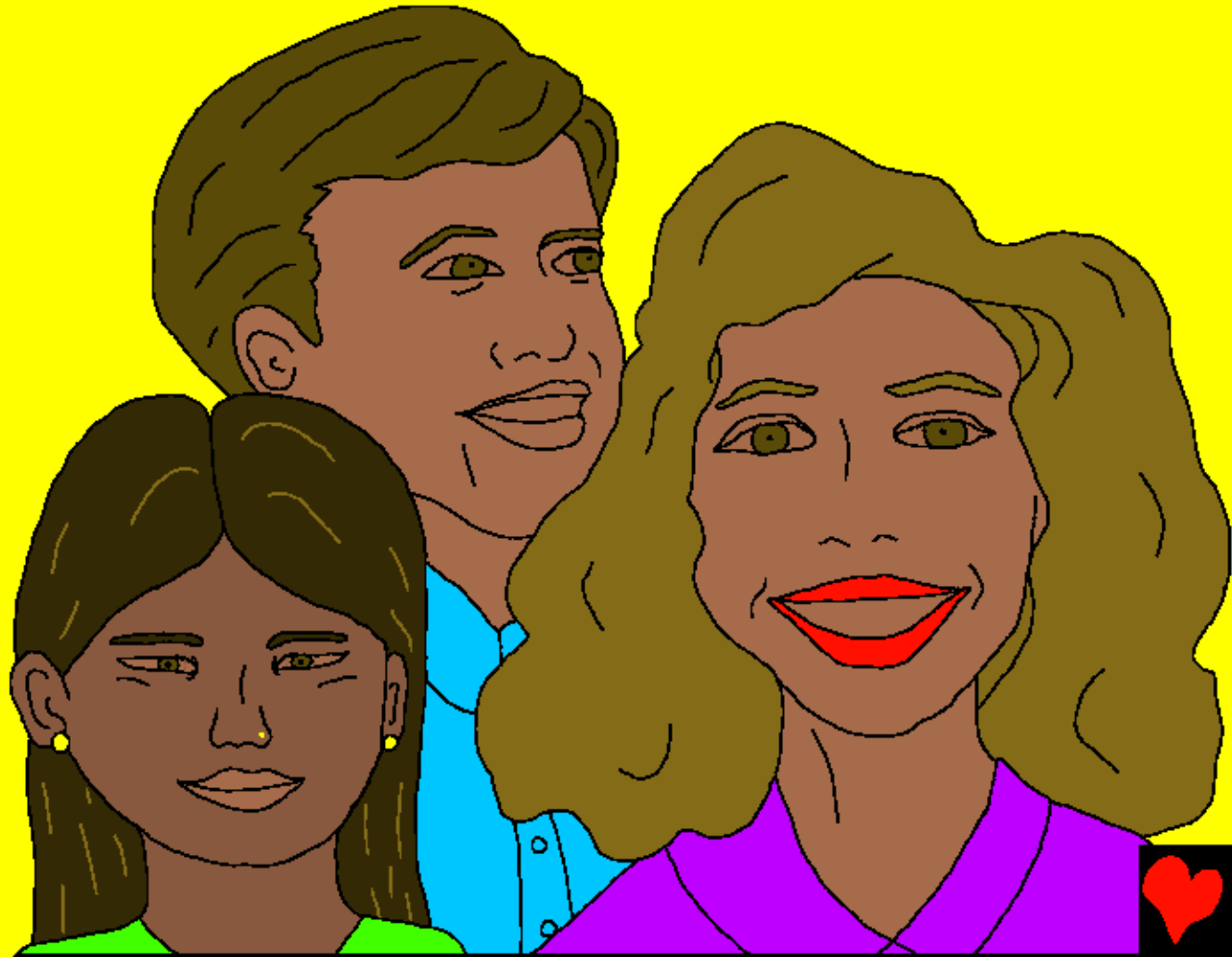
Shi ya shawye laba,
ya gye anyaho bwui n
eshemi. Aminagyi
beda to lo awon.
Zahozahoi to nlo woi
sungun ko ngna wonhi
yem. Akataceyi to
lon, azawuyi,
aguzhinyi, ko aza
nukwoyi. Laifi
doho-dohoi to
nlon n eshemi m.



Dna nshe nkunsun n
Shekwoyi awyenyin to
lon. Nsahoyi, Shekwoyi
aza bwuici ntu nbugba
wun bo nu nba nna anyi
ye. N eshe Shekwoyi bei
wun awyenyi ya vinya.

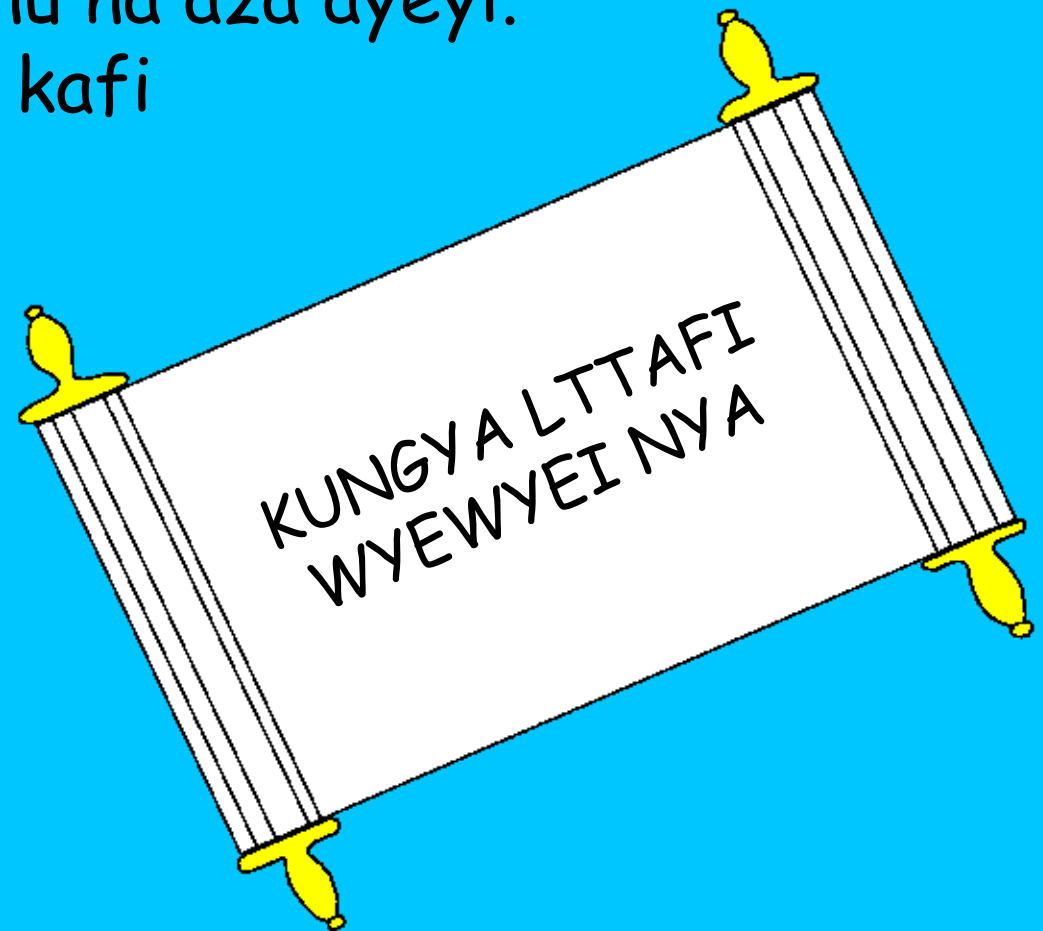


Efi to nlo n Eshemin, awo. Shekwoyi aza bei
kunsun n Dagayi nyalo-nya. Bugba win to lon, bwici
ton, agna sasan. Nyasa ton, aje amigna, azabiban.
Zaho-Zahoi ndagma
nyalo-nya n
Shekwoyi.



No manayi, Eshe zhin abikasa bedo na anyiko kasa nyanu (na azacikpe ce) nbala gaiciya ga n Yesu Kristi ngye oba Gninyi bedo nbiyaya ga yi ngye oba Dagayi. N Eshemi Littafi nlo ayiko Kungya Littafi Wyewyei nya. Ko nunu na aza ayeyi. Hi kpe aza ayelo nba kafi nbo? Aza vinya nba gaiciya ga Yesu.

Oho ye lo nbo?



Littafi beda kmaknayi ntu Eshe no ba zhin gayata wowoiyi nu. "Bedo n Zafun nmula yinko da ge, 'Be!' Afa oza nwa wo Ada ge 'Be!' Aye oza nunwa minku wo wolo wa be. Zaho-zahoi nwoye, afa wo wa sin nuwa wyewyei nya chauta".



Eshe, Shekwoyi puwa Manayi

Nabagyi nko gbin n Shekwoyi Beda, Littafi,

nko lo nu

Yohanna 14; 2 Akorintiyi 5;
Bewyegye 4, 21, 22

"Aduba Oho Abeda nya ga buzagna."
Zabula 119:130



Kpasunyi



Littafi nabagyi dayi Shekwoyi nwa zhin Yi nwo ya kpe Wo ye.

Shekwoyi kpelo nge yiku abo nukoyi zhin,
nWoyi laifi. Tata laufi ye nya konu zhin efi, ama
Shekwoyi ye ho lo nmwa Wo tnu nwo Nugunyi, Yesu wo
fi tu nzundu wo gye azhin ntu nha alaifi bo. Yesu was jeze
be wyeweyi Was lo puwa nshemi! Nha ga gaiciya ga Yesu
ha nya Wo nge Wo ze ho alaifi. Wo ba zhin! Wo ma be wa
sase nho nsaiye, ohoi nce ho ba sase nWoi nyalo nya.

Nho la gaiciya ga nge deye zhin gaiciya nu, da deye ga
Shekwoyi: Yesu, mi ngaiciyayi ga nge Ho zhin Shekwoyinu,
hoi ze zayinkoci hoi fi ntu nmi alaifi bo, Hoi nwyeweyi
lo njesun. Sukusuku be mi asase ba ha ze emi alaifi,
nabai nba bwa wyeweyi woiwoyi nsaiye, nyipeyi gmanyi
nbo kun sun nHoi nyalo nya. Bma mi zhin ma zhin Ho
biyaya ma sase ga Ho nge Oho bi. Amin.

Ba Littafi ha dabo n Shekwoyi fyegyif-fyegyif! Yohanna 3:1

