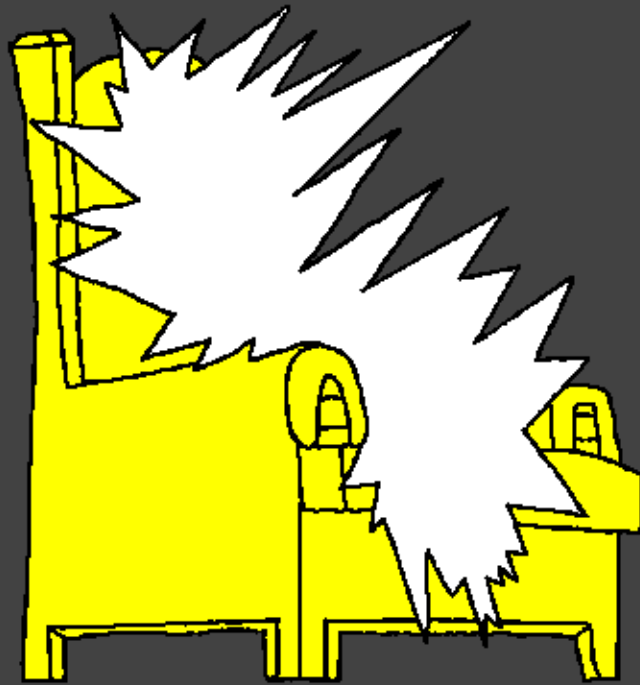


Littafi Abi nya  
tnunceyi



Eshe,  
Shekwoyi  
puwa  
Manayi



Aka yi: Edward Hughes

Awu yi: Lazarus  
Alastair Paterson

Ago yi: Sarah S.

Agogna yi: [www.christian-translation.com](http://www.christian-translation.com)

Aza nba zhinko: Bible for Children  
[www.M1914.org](http://www.M1914.org)

©2021 Bible for Children, Inc.

Dama: Ho yenchi lo ha kpan ko ha lu nabagyi ye,  
ndeï nho to ye hakun nu.



Esa Yesu dna na anyi Wa da owo abala  
eshe bo. Wa Yi ko "Emi Dada Puwa", wa  
jeda gye apuwa lo nmwa nbo.

Puwa gmanyi nlapata,  
puwa biya-bmiya yi.

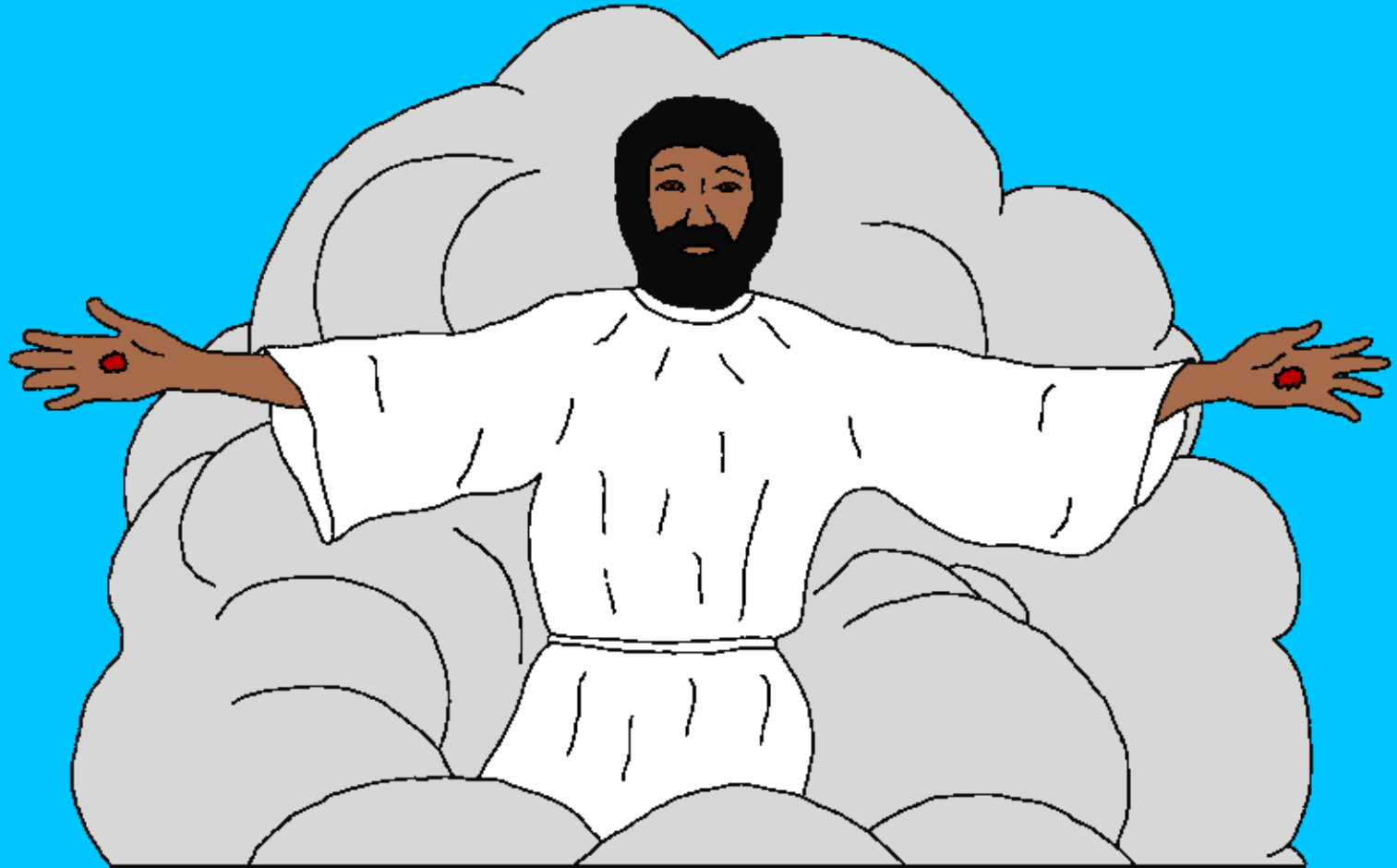
Eshe du anyilo  
npata bedo  
nbmiya-bmiya



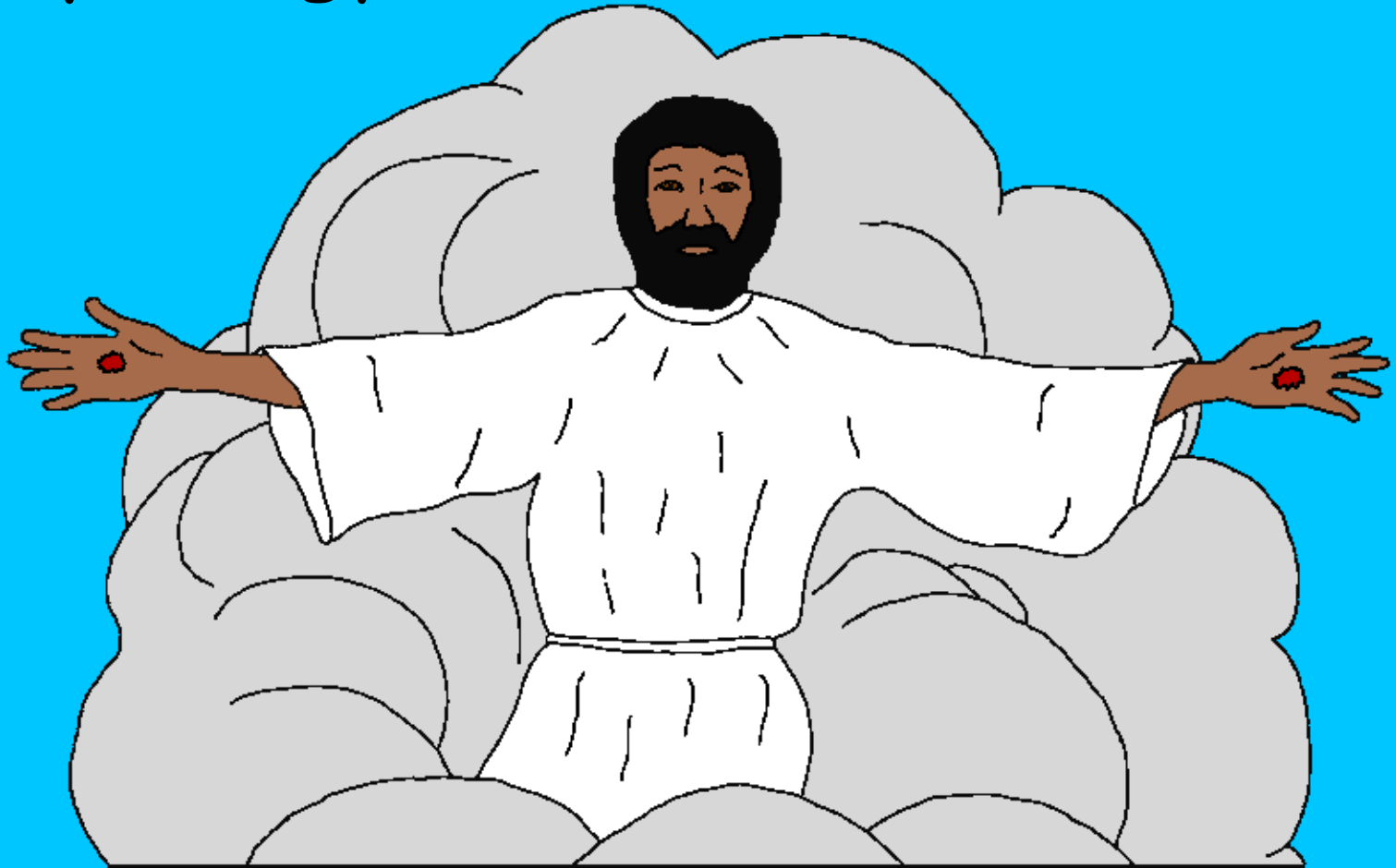
yi ndu anyi puwa.



Yesu da gye, "Mi lo mi zhin ababa ga fye.  
Nmalo ma zhin ababa gafye nba jeze be  
njesun ma go fye nmiyin".



Yesu bei lo eshe nu esa nwa laka nfi.  
Nwa abala awechekonwu nwo be laka dna  
n eshe mi enyi ko go wo shi ba bei  
shawye ba gye woi lo.



Tun sayi, Aviyi ba ku pa Yesu alkawali  
Wa jeze be wa be da ba. Yesu wa  
cige, Wi ba jeze ntna sawunyayi  
n na to ncednam.



Amma aviyi nbaku fi kafin Wo jeze be  
ma? Littafi da gye, ba bei lo eshe  
cewo ba kunsun n Yesu yi.

To ha gni n nanyi,  
ko nu wu ge ho lo  
n Dagayi aba.



Yohanna Bewyegye, Littafi kmaknanyi,  
dayi Shi eshe wu. Aba manayi nu,  
Shekwoyi puwa. Shekwoyi lo na  
abahobahoyi amma Owo  
ebemi lo n eshe nu.





Amalaika bedo na azajeyi n eshe mi ba  
zhin Shekwoyi sujada n eshe.

Nlonu Shekwoyi aza  
nbaku fi ba nyi du eshe  
mi. Ba ko anyi manayi  
lalatu nya  
ga Shekwoyi.



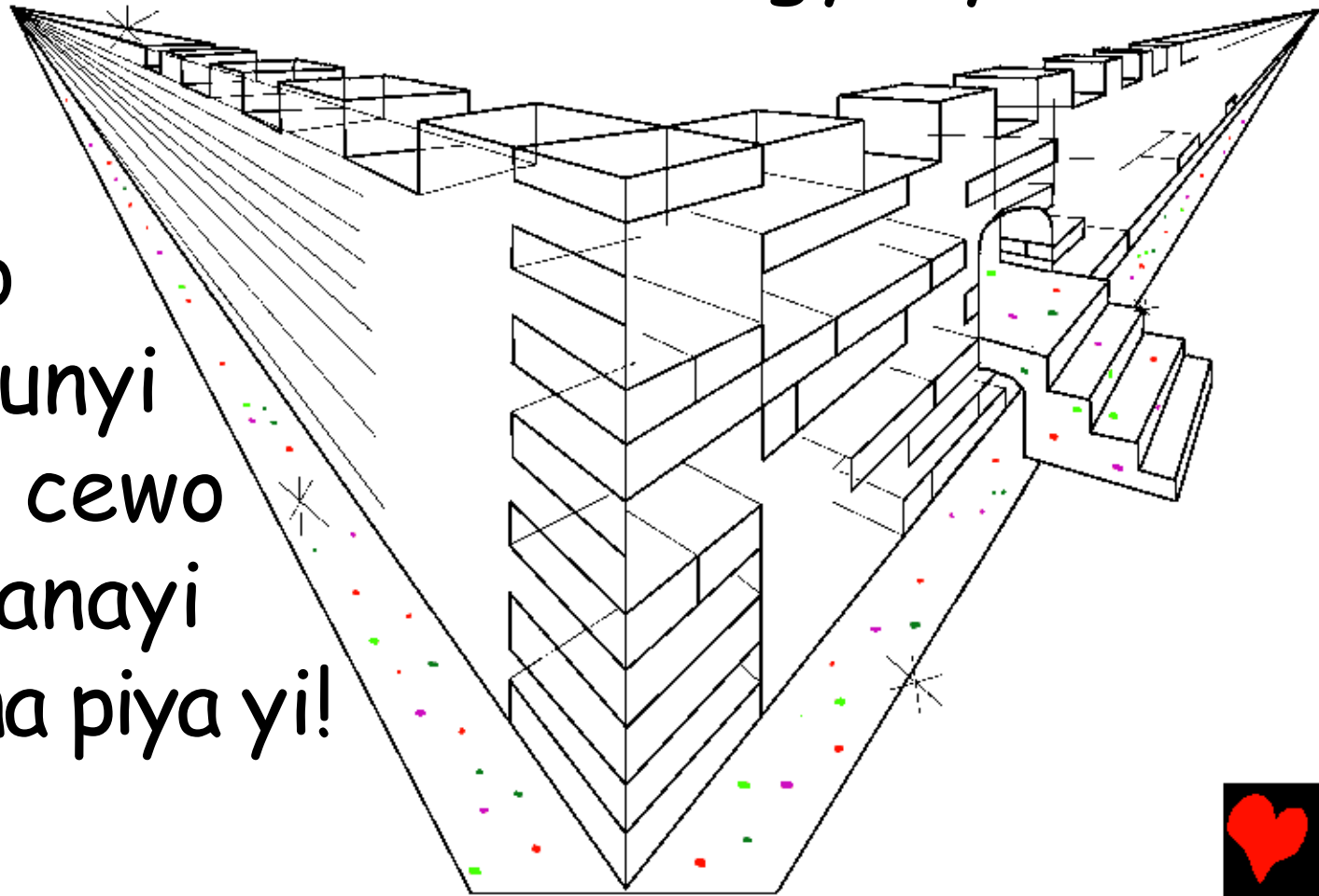
Abeda nyi n na anyi nba ko: HO  
KUNCELO NTUGE OHO NU NA GNIYI  
YA NHA AMIYI NA  
ABYEDO BEDO NA AKNI  
DO YI HOI ZE YI ASU  
BEDO NA A  
PRISTI YI  
NSHEKW-  
OYI ABA.

(Yohanna  
Bewyegye  
5:9)



Nlittafi kmankna ko ku wu shi eshe wu  
ngye "Jelusalem woiwoiyi". Ko mwa kpa  
nyakunyipa nbin. Nmi na jasper akutayi  
agyewye dei-dei. Nmi na abegyenya

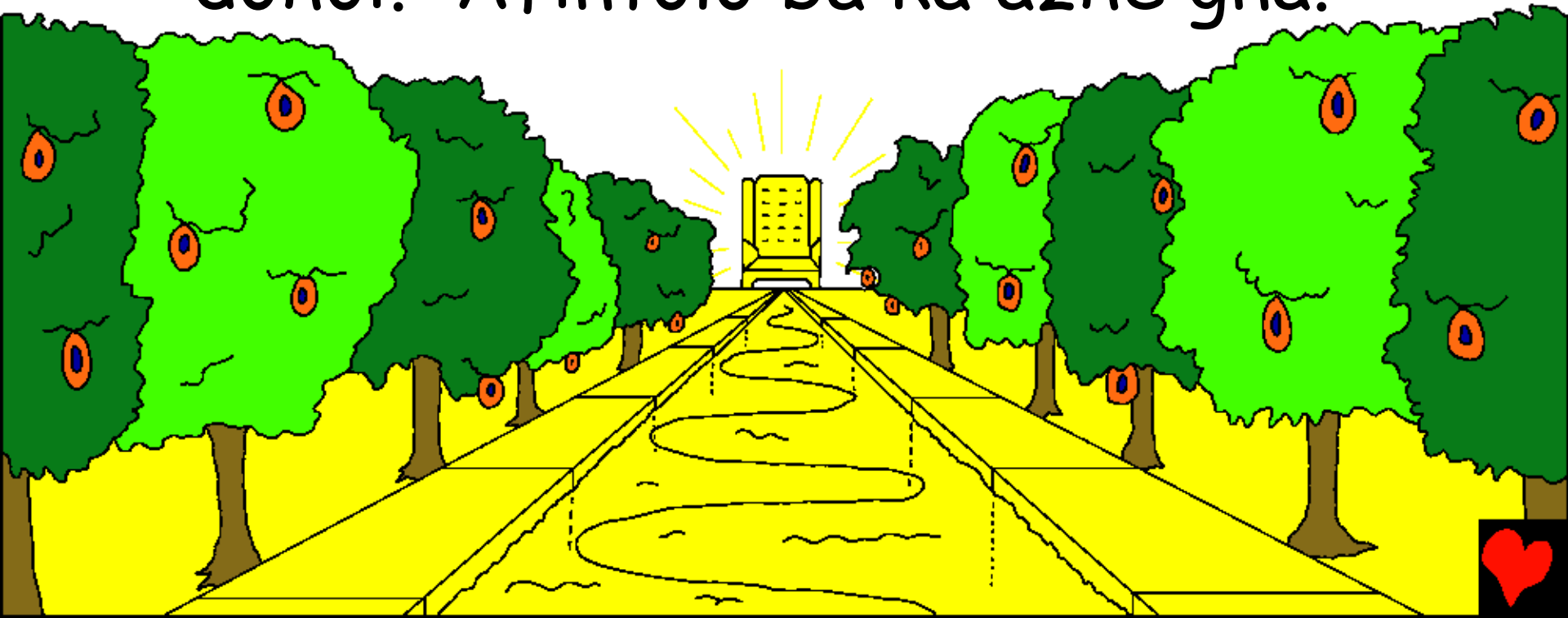
bedo na  
akuta  
manayi nko  
ya mi nyakunyi  
pa ngmigni cewo  
na akala manayi  
ba bmina na piya yi!



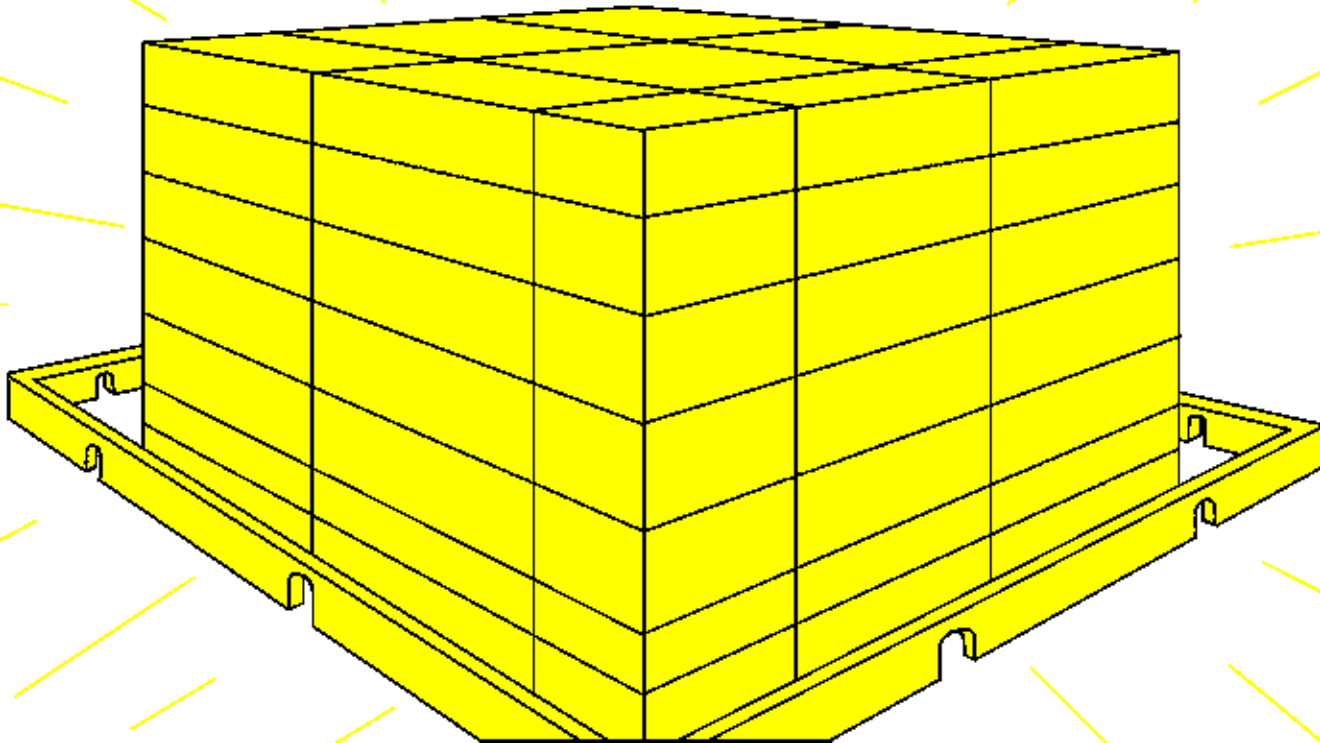
Apiya ye aduba ata gu ban sam-sam. Yi lo mi Yi shawye ... WOW! Eshe ngna bmiyalon emi. Azoko nmi na zinaliyayi n bmiya ngye aglasi. Azoko nba zhin na a zinaliyayi.



Nuwa manayi nko zhe ndna nuwa wyewyei  
nya nkun n Shekwoyi ebemi. Na abahobahoyi  
n dna shunwa wyewyei nya lo, na bei bwa  
ko n Gadi Eden nya. Shunya nkonyi ko gyi  
egba gbo-gbo awoceyi aba opya doho-  
dohoi. Afintolo ba ka azhe gna.



Eshe to n nyipeyi bedo pyayi apmayi lon  
n buzanga bon. Shekwoyi mwamwa nu  
nuko n buzangna wowoyi. Ato taba  
nsuko zhin nbon.



Ko anya fanya n eshemi ba lo gbo-gbo.  
Nba wakna ntna minagyi. Anyafanya aje  
na Akungya ba gyi nyagyi nkunsun. Ko  
agbesi ma gyi Anya na anyafayan ajeyi.  
DAGAYI nkuda, "Ba ta wu she bwan  
agna ba zo na ajeyi nMi Gyi-gyi epen."



Shi ya shawye laba, ya gye anyaho bwui n eshemi.

Aminagyi beda to lo awon. Zahozahoi to nlo woi sungun ko ngna wonhi yem. Akataceyi to lon, azawuyi, aguzhinyi, ko aza nukwoyi. Laifi doho-dohoi to nlon n eshemi m.



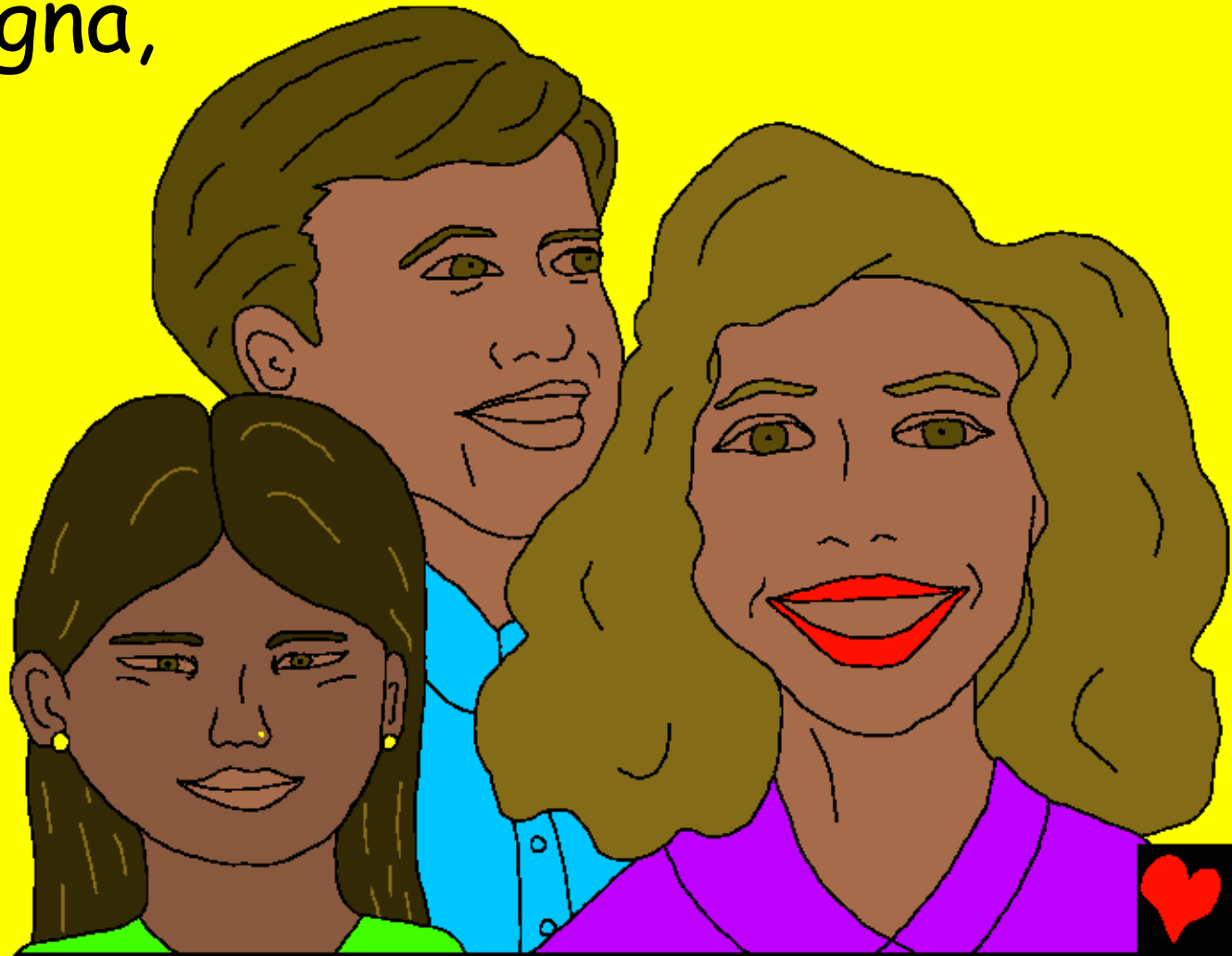


Dna nshe nkunsun n  
Shekwoyi awyenyin to  
lon. Nsahoyi, Shekwoyi  
aza bwuici ntu nbugba  
wun bo nu nba nna anyi  
ye. N eshe Shekwoyi bei  
wun awyenyi ya vinya.

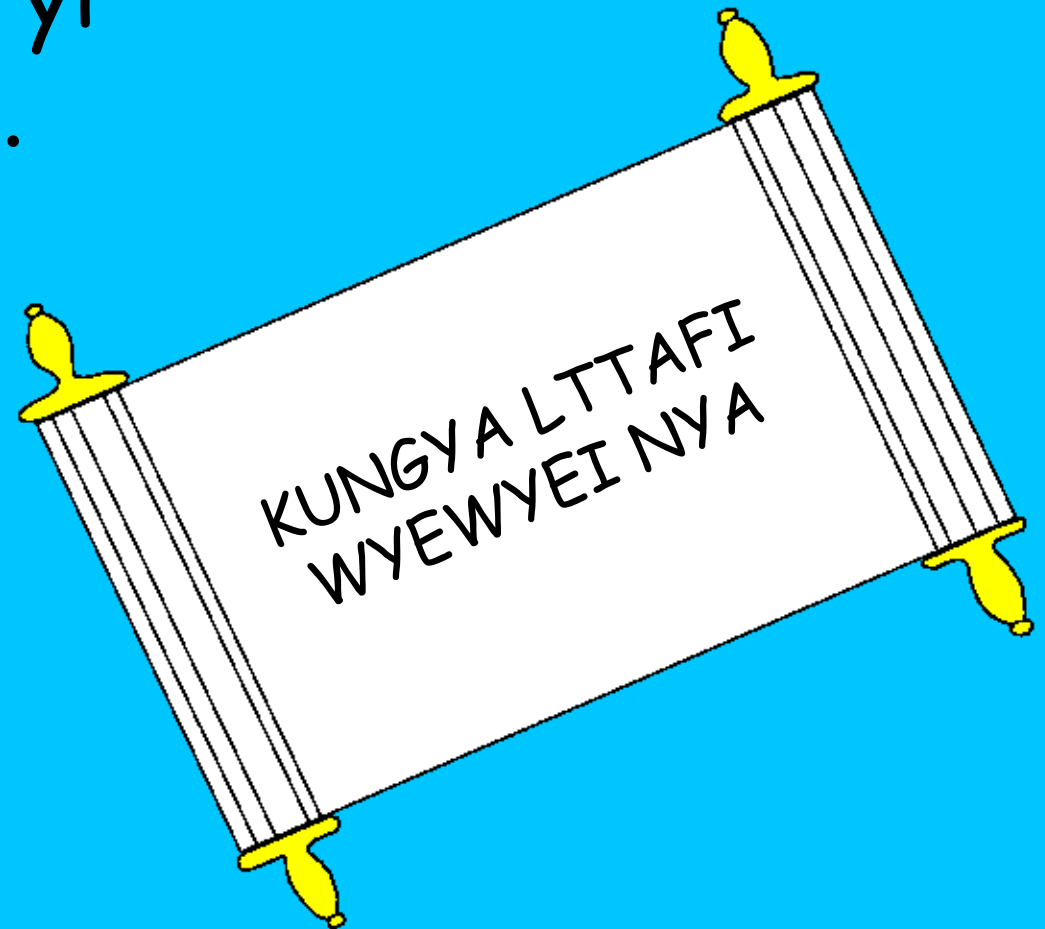


Efi to nlo n Eshemin, awo. Shekwoyi aza  
bei kunsun n Dagayi nyalo-nya. Bugba  
win to lon, bwici ton, agna sasan. Nyasa  
ton, aje amigna,  
azabiban.

Zaho-Zahoi  
ndagma  
nyalo-nya n  
Shekwoyi.

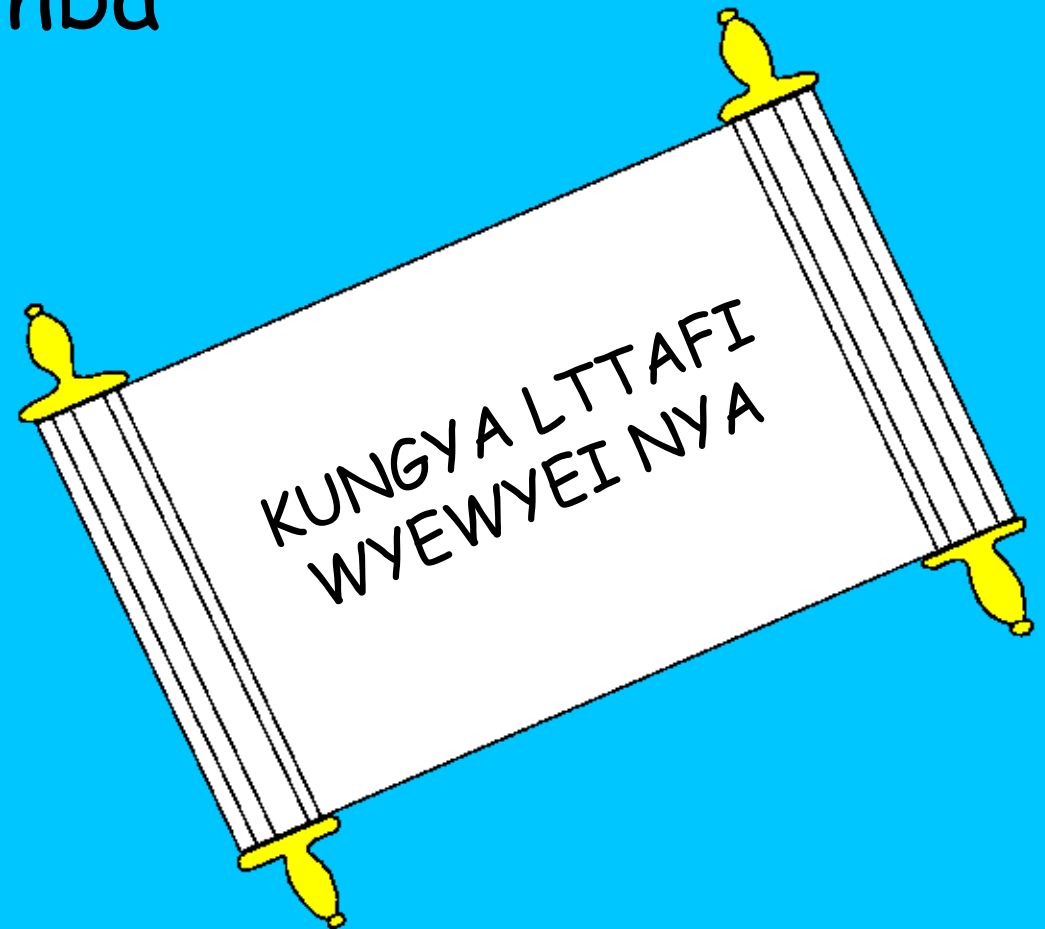


No manayi, Eshé zhin abikasa bedo na anyiko kasa nyanu (na azacikpe ce) nbala gaiciya ga n Yesu Kristi ngye oba Gninyi bedo nbiyaya ga yi ngye oba Dagayi.



N Eshemi Littafi nlo ayiko Kungya  
Littafi Wyewyei nya. Ko nunu na aza  
ayeyi. Hi kpe aza ayelo nba kafi  
nbo? Aza vinya nba  
gaiciya ga Yesu.

Oho ye lo nbo?



Littafi beda kmaknayi ntu Eshe no ba  
zhin gayata wowoiyi nu.



"Bedo n Zafun nmula yinko da ge, 'Be!  
Afa oza nwa wo Ada ge 'Be!' Aye oza  
nunwa minku wo wolo wa be. Zaho-zahoi  
nwoye, afa wo wa sin nuwa wyewyei nya  
chauta".



Eshe, Shekwoyi puwa Manayi

Nabagyi nko gbin n Shekwoyi Beda,  
Littafi,

nko lo nu

Yohanna 14; 2 Akorintiyi 5;  
Bewyegye 4, 21, 22

"Aduba Oho Abeda nya ga buzagna."  
Zabula 119:130



Kpasunyi





Littafi nabagyi dayi Shekwoyi nwa zhin Yi  
nwo ya kpe Wo ye.

Shekwoyi kpelo nge yiku abo nukoyi zhin,  
nWoyi laifi. Tata laufi ye nya konu zhin  
efi, ama Shekwoyi ye ho lo nmwa Wo tnu  
nwo Nugunyi, Yesu wo fi tu nzundu wo gye  
azhin ntu nha alaifi bo. Yesu was jeze  
be wyewyeiyi Was lo puwa nshemi! Nha ga  
gaiciya ga Yesu ha nya Wo nge Wo ze ho  
alaifi. Wo ba zhin! Wo ma be wa sase nho  
nsaiye, ohoi nce ho ba sase nWoi nyalo nya.



Nho la gaiciya ga nge deye zhin gaiciya nu,  
da deye ga Shekwoyi:

Yesu, mi ngaiciyayi ga nge Ho zhin  
Shekwoyinu, hoi ze zayinkoci hoi fi ntu nmi  
alaifi bo, Hoi nwyeweyeyi lo njesun.

Sukusuku be mi asase ba ha ze emi alaifi,  
nabai nba bwa wyewyeyi woiwoyi nsaiye,  
nyipeyi gmanyi nbo kun sun nHoi nyalo nya.  
Bma mi zhin ma zhin Ho biyaya ma sase ga  
Ho nge Oho bi. Amin.

Ba Littafi ha dabo n Shekwoyi  
fyegyif-nyegyif! Yohanna 3:1

