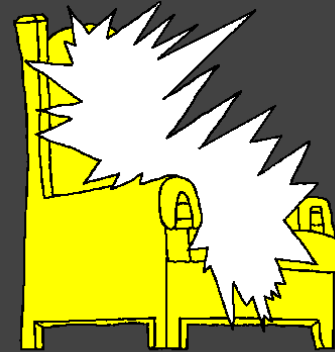


Eshe, Shekwoyi puwa Manayi



Aka yi: Edward Hughes
Awu yi: Lazarus
Alastair Paterson

Agogna yi: www.christian-translation.com
Ago yi: Sarah S.

Nabagyi 60 dna 60

M1914.org

Bible for Children, PO Box 3, Winnipeg MB R3C 2G1 Canada

Dama: Ho yenchi lo ha kpan ko ha lu nabagyi ye,
ndeï nho to ye hakun nu.

19

20

21

22

23

Shekwoyi kpelo nge Yi ku abo nukwoyi
zhin, n Wo yi laifi. Laifi Lada nu zhin efi.

Shekwoyi yeyi nmwa Wo tnu nWo Nugun
Yesu, Woi fi tu nzundu Woi gba eyi alaifi ta.
Yesu Wa be nwyewyeyi Wa jeze lo eshem!
Nsaiye Shekwoyi ba ze Yi alaifi abwui.

Nho ye ha ye abwui nha alaifi da deye ga Shekwoyi:
Shekwoyi, Mi ngaiciya Yi ga Yesu nWa fi ntu mi no
Woi nwyewyeyi lo njesun. Sukusuku be mi asase ba
Ha ze mi alaifi abwui n nabai nba bwa wyewyeyi
woiwoyi nsaiye, nba kun sun nHoi nyalo nya. Bma mi
zhin ma sase nge Ho bi. Amin. Yohanna 3:16

Ba Littafi ha dabo n Shekwoyi fyegyi-fyegyi!

Gbagyi_Genge

Gbagyi West

Esa Yesu dna na anyi Wa da owo abala eshe bo.
Wa Yi ko "Emi Dada Puwa", wa jeda gye apuwa lo
nmwa nbo. Puwa gmanyi nlapata, puwa
biya-bmiya yi. Eshe du
anyilo npata bedo
nbmiya-bmiya
yi ndu anyi puwa.



Yesu da gye, "Mi lo mi zhin ababa ga fye. Nmalo
ma zhin ababa gafye nba jeze be njesun ma go fye
nmiyin". Yesu bei lo eshe nu esa nwa laka nfi. Nwa
abala awyechekonu nwo be laka dna n eshe mi
enyi ko go wo shi ba
bei shawye ba
gye woi lo.



1

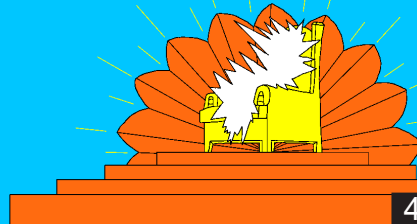
2

Tun sayi, Aviyyi ba ku pa Yesu alkawali Wa jeze be wa be da ba. Yesu wa cige, Wi ba jeze ntna sawunyayi n na to ncednam. Amma aviyyi nbaku fi kafin Wo jeze be ma? Littafi da gye, ba bei lo eshe cewo ba kunsun n Yesu yi. To ha gni n nanyi, ko nu wu ge ho lo n Dagayi aba.

AWU NKUNSON
N DAGAYI

3

Yohanna Beweygye, Littafi kmaknanyi, dayi Shi eshe wu. Aba manayi nu, Shekwoyi puwa. Shekwoyi lo na abahobahoyi amma Owo ebemi lo n eshe nu.



4

Amalaika bedo na azajeyi n eshe mi ba zhin Shekwoyi sujada n eshe. Nlonu Shekwoyi aza nbaku fi ba nyi du eshe mi. Ba ko anyi manayi lalatu nya ga Shekwoyi.



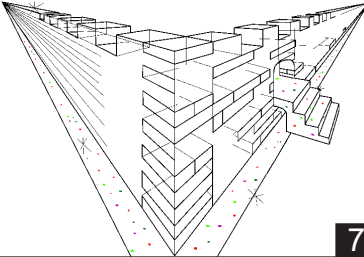
5

Abeda nyi n na anyi nba ko: HO KUNCELO NTUGE OHO NU NA GNIYI YA NHA AMIYI NA ABYEDO BEDO NA AKNI DO YI HOI ZE YI ASU BEDO NA A PRISTI YI NSHEKWYOI ABA. (Yohanna Beweygye 5:9)



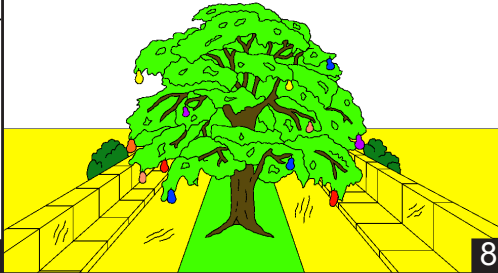
6

Nlittafi kmankna ko ku wu shi eshe wu ngye "Jelusalem woiwoiyi". Ko mwa kpa nyakunyipa nbini. Nmi na jasper akutayi agyewye dei-dei. Nmi na abegyenya bedo na akuta manayi nko ya mi nyakunyi pa ngmigni cewo na akala manayi ba bmina na piya yi!



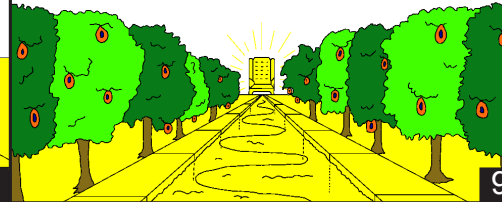
7

Apiya ye aduba ata gu ban sam-sam. Yi lo mi Yi shawye ... WOW! Eshe ngna bmiyalo n emi. Azoko nmi na zinaliyayi n bmiya ngye aglasi. Azoko nba zhin na a zinaliyayi.



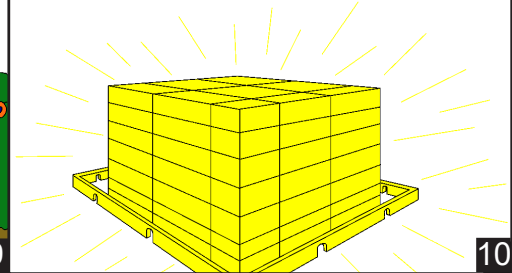
8

Nuwa manayi nko zhe ndha nuwa wyeweyi nya nkun n Shekwoyi ebemi. Na abahobahoyi n dna shunwa wyeweyi nya lo, na bei bwa ko n Gadi Eden nya. Shunya nkonyi ko gyi egba gbo-gbo awoceyi aba oya doho-dohoi. Afintolo ba ka azhe gna.



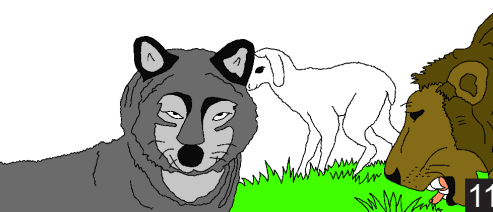
9

Eshe to n nyipeyi bedo pyayi apmayi lon n buzanga bon. Shekwoyi mwamwa nu nuko n buzangna wowoyi. Ato taba nsuko zhin nbon.



10

Ko anya fanya n eshemi ba lo gbo-gbo. Nba wakna ntna minagyi. Anyafanya aje na Akungya ba gyi nyagyi nkunsun. Ko agbesi ma gyi Anya na anyafayan ajeyi. DAGAYI nkuda, "Ba ta wu she bwan agna ba zo na ajeyi nMi Gyi-gyi epen."



11

Shi ya shawye laba, ya gye anyaho bwui n eshemi. Aminagyi beda to lo awon. Zahazahoi to nlo woi sungun ko ngna wonhi yem. Akataceyi to lon, azawuyi, aguzhinyi, ko aza nukwoyi. Laifi doho-dohoi to nlon n eshemi m.



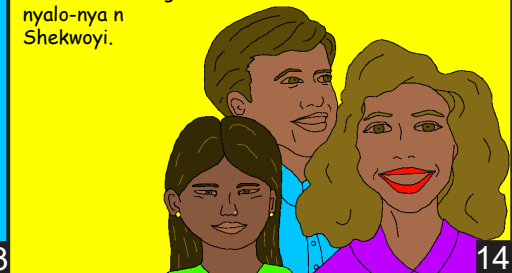
12

Dna nshe nkunsun n Shekwoyi awyenyin to lon. Nsahoyi, Shekwoyi aza bwuici ntu nbugba wun bo nu nba nna anyi ye. N eshe Shekwoyi bei wun awyenyi ya vinya.



13

Efi to nlo n Eshemin, awo. Shekwoyi aza bei kunsun n Dagayi nyalo-nya. Bugba win to lon, bwici ton, agna sasan. Nyasa ton, aje amigna, azabiban. Zaho-Zahoi ndagma nyalo-nya n Shekwoyi.



14

No manayi, Eshe zhin abikasa bedo na anyiko kasa nyanu (na azacikpe ce) nbala gaiciya ga n Yesu Kristi ngye oba Gninyi bedo nbiyaya ga yi ngye oba Dagayi. N Eshemi Littafi nlo ayiko Kungya Littafi Wyeweyi nya. Ko nunu na aza ayeyi. Hi kpe aza ayelo nba kafi nbo? Aza vinya nba gaiciya ga Yesu.



Oho ye lo nbo?

15

Littafi beda kmaknanyi ntu Eshe no ba zhin gayata wowoyi nu. "Bedo n Zafun nmula yinko da ge, 'Be!' Afa oza nwa wo Ada ge 'Be!' Aye oza nunwa minku wo wolo wa be. Zaho-zahoi nwoye, afa wo wa sin nuwa wyeweyi nya chauta".



16

Eshe, Shekwoyi puwa Manayi
Nabagyi nko gbin n Shekwoyi Beda, Littafi,
nko lo nu

Yohanna 14; 2 Akorintiyi 5;
Beweygye 4, 21, 22

"Aduba Oho Abeda nya ga buzagna."
Zabula 119:130

17

18