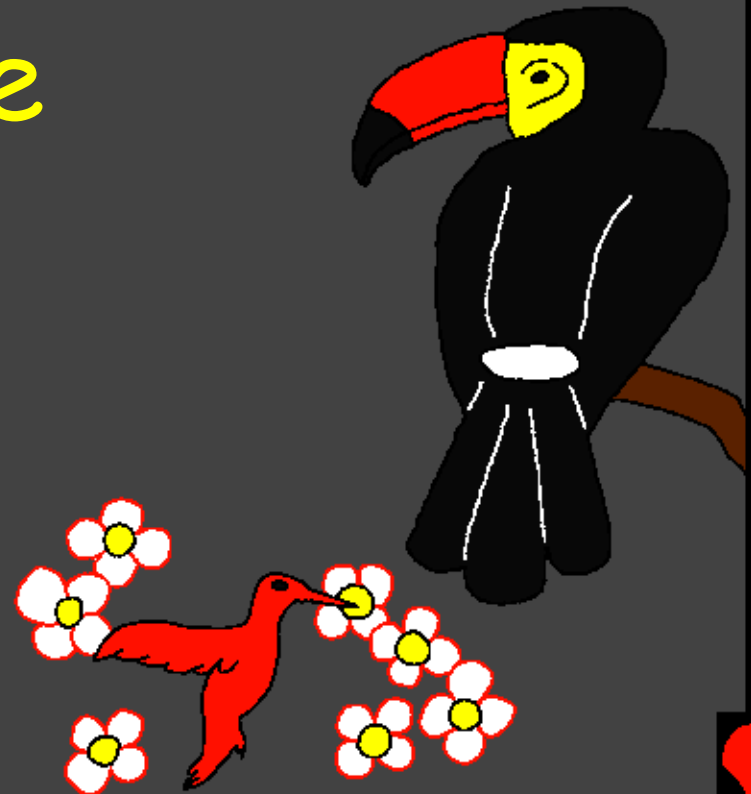
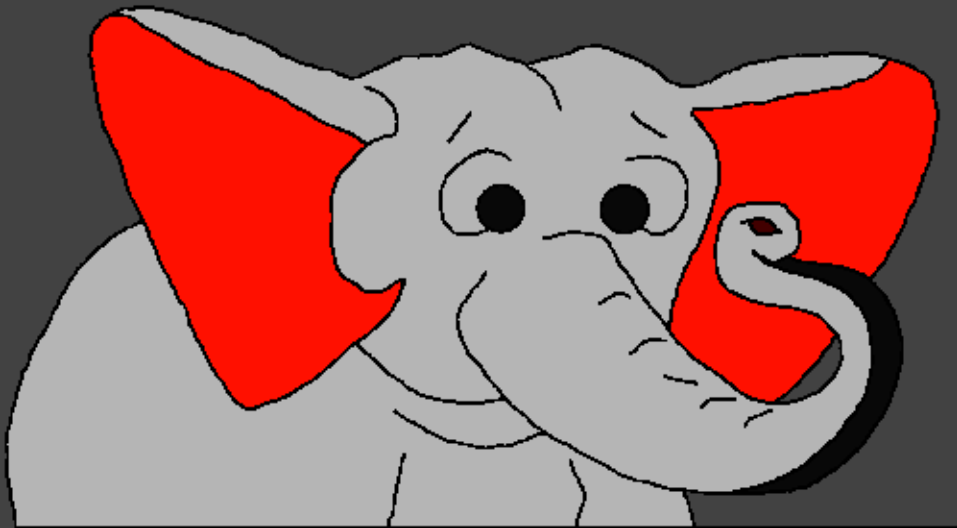


Ikwukwo akuko nso maka umu ntakiri
a na-egosi

Oge/mgbe Chineke
kere ihe nile



Ode akwukwo: Edward Hughes

Onye kuziri ya: Byron Unger; Lazarus
Alastair Paterson

Onye haziri ya/Onye nhazi:
Bob Davies; Tammy S.

Onye tughariri okwu a: Ekwealor Sylvia Ujunwa

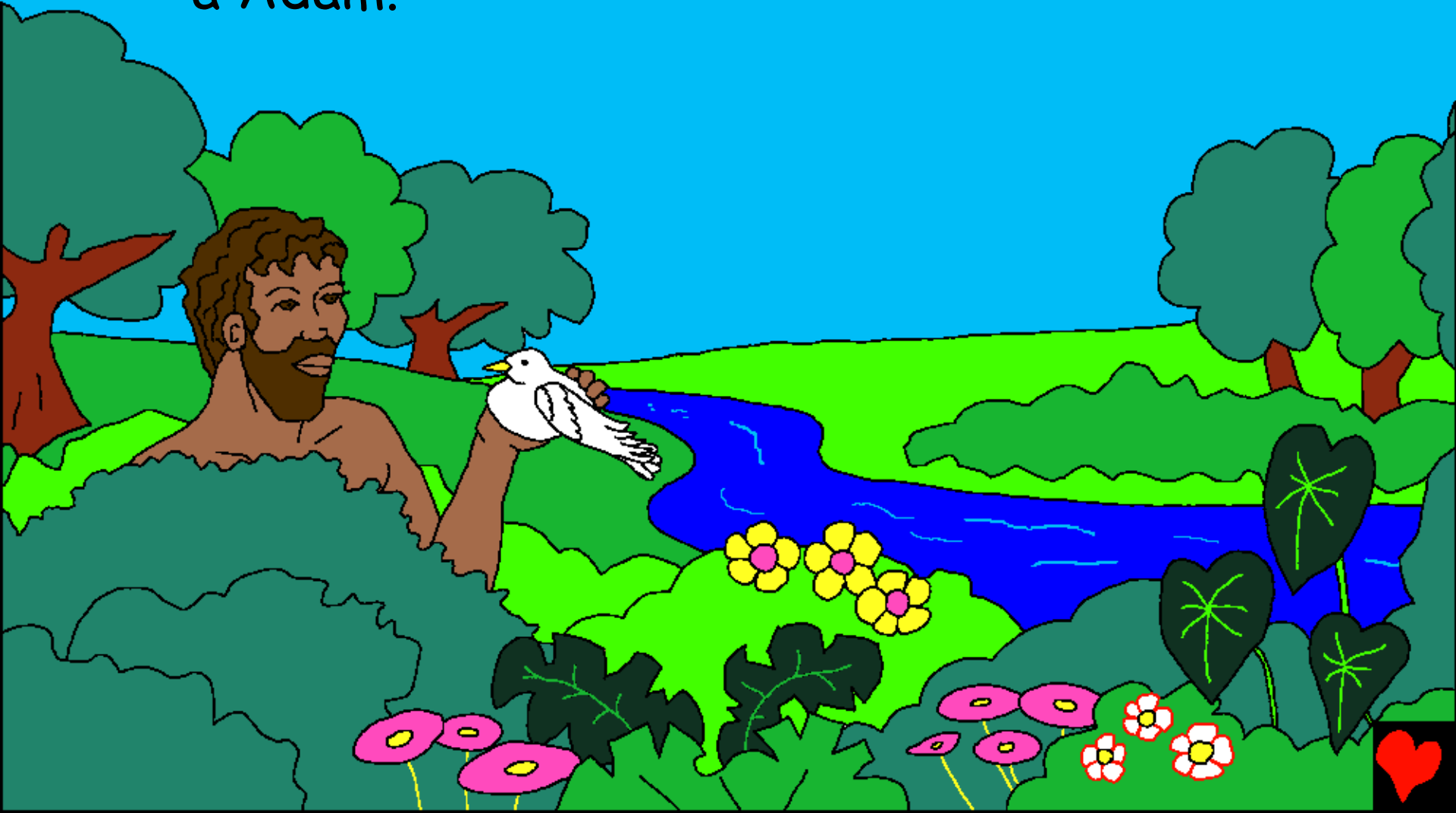
Onye biputere akwukwo: Bible for Children
www.M1914.org

©2020 Bible for Children, Inc.

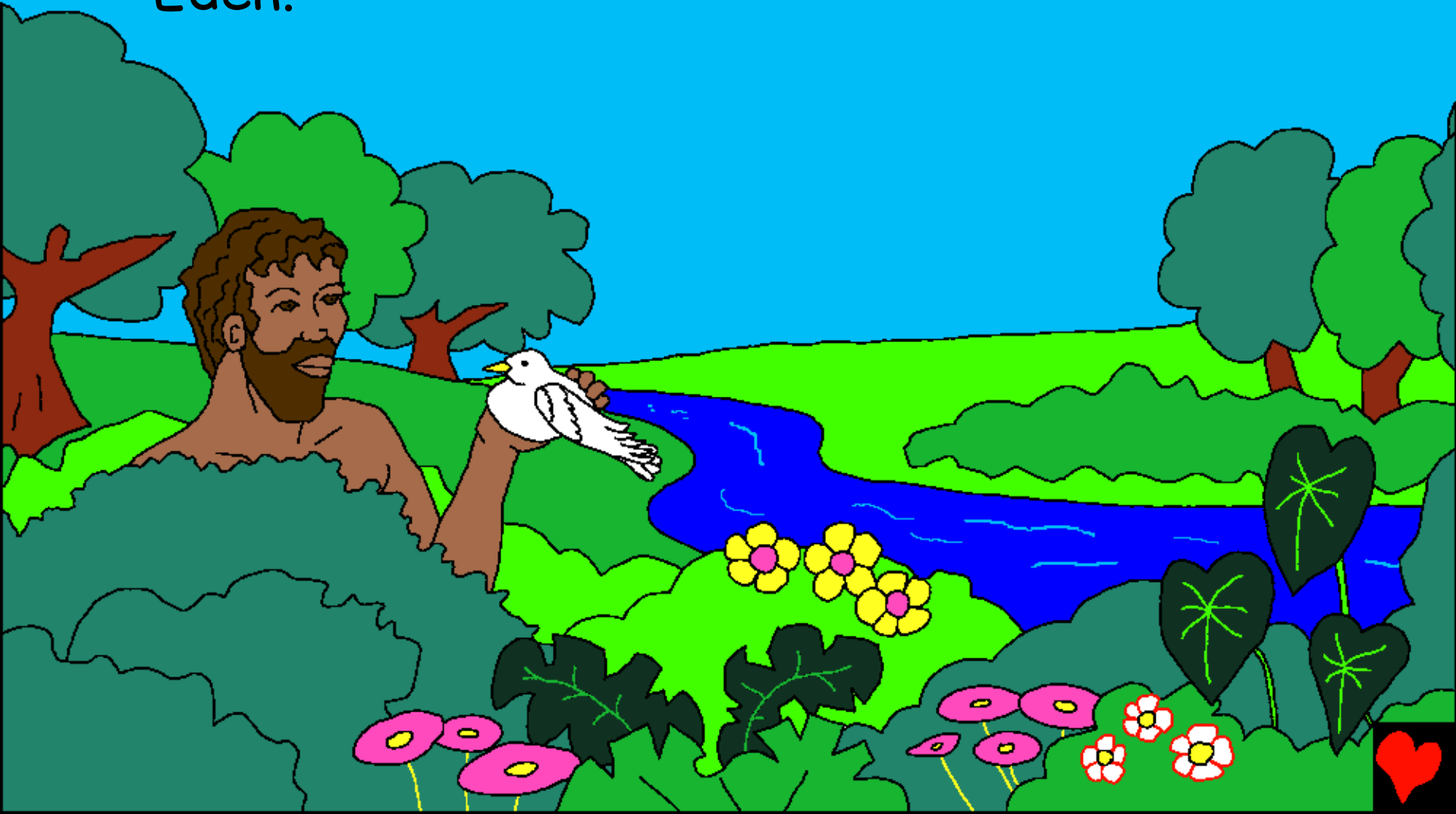
Ike/ikike: i nwere ike ma obu ikike i biputa
akuko a nani i gaghi ere ya ere.



Onye kere anyi? akwukwo nso, okwu nso Chineke gwara anyi otu mmadu jiri bido/puta. Mgbe/oge gara aga, Chineke kere mmadu mbu were nye ya aha a Adam.



Chineke keputara Adam na aja ala. Mgbe Chineke kunyere ume Ya n'ime Adam, o buru mmadu di ndu. O huru onwe ya n'ime ebe okuku ihe nke aha ya bu Eden.



Tupu Chineke e kee Adam, O kere uwa nile ma chokwa ya nma nke ukwu u. Otu nzo ukwu ahụ, Chineke kere elu ugwu, eluigwe, akwukwo osisi nwere isi oma na ogologo ukwu osisi, umu anu ufe nile nwere nku na ndi na-eme nkpotu ma ha n'efe hari, umu nnukwu azu nmiri na ndi nke na ari ari.

N'ezie Chineke kere ihe nile e kere eke.



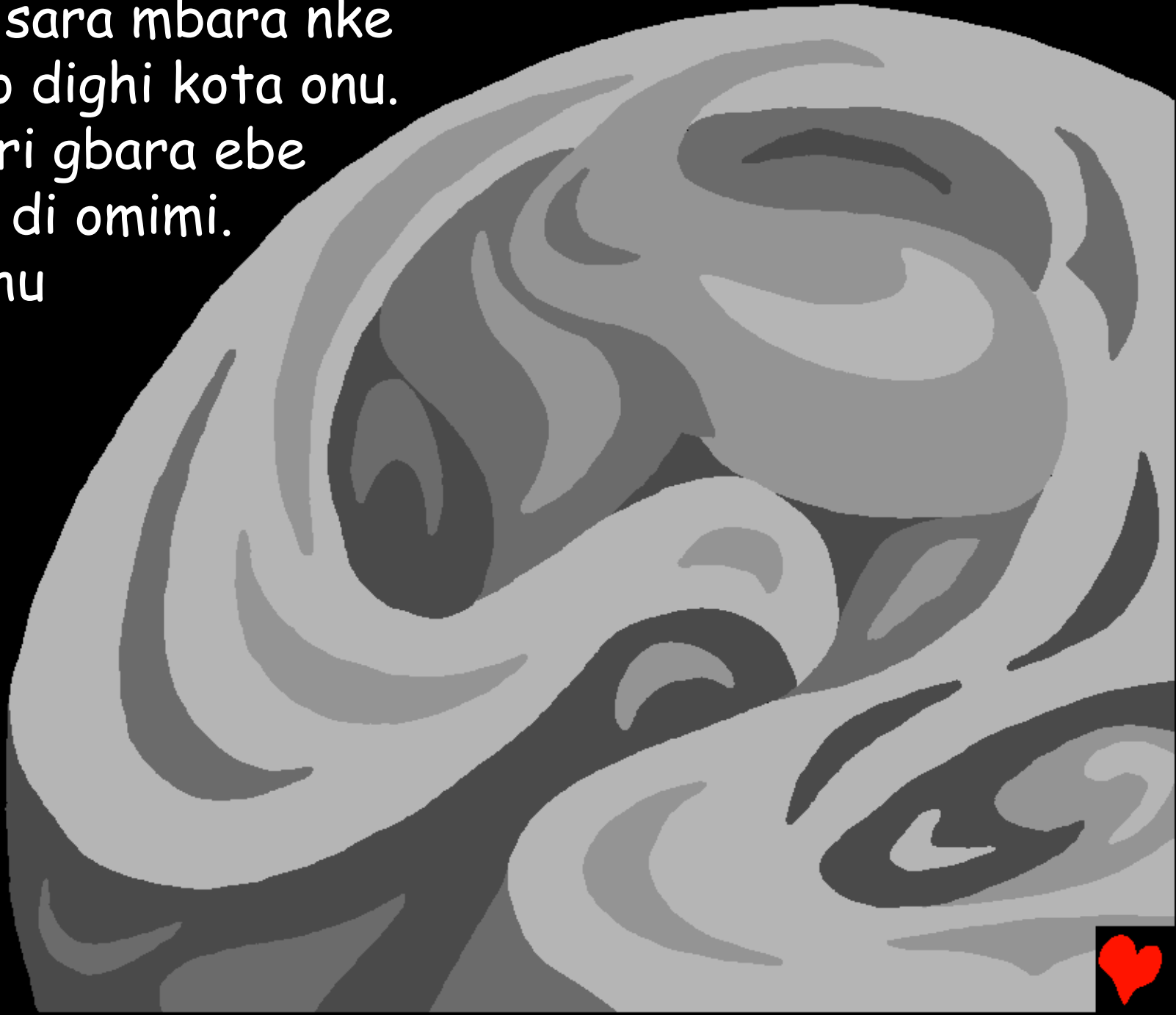
N' oge/mgbe mbu, tupu
Chineke e kee ihe obula,
nani Chineke di. Mmadu
obula, obodo obula na ihe
obula adighi. O dighi
ihe di nu. Ihe adighi,
Ochichiri adighi.
Elu na ala adighi.
Echi gara aga adighi,
echi na-abia bia adighi.
Nani Chineke onye
na-enweghi mbido. Chineke
wee bido ke we ihe nile.



N'isi mbido uwa,
Chineke kere
elugwe n'uwa.



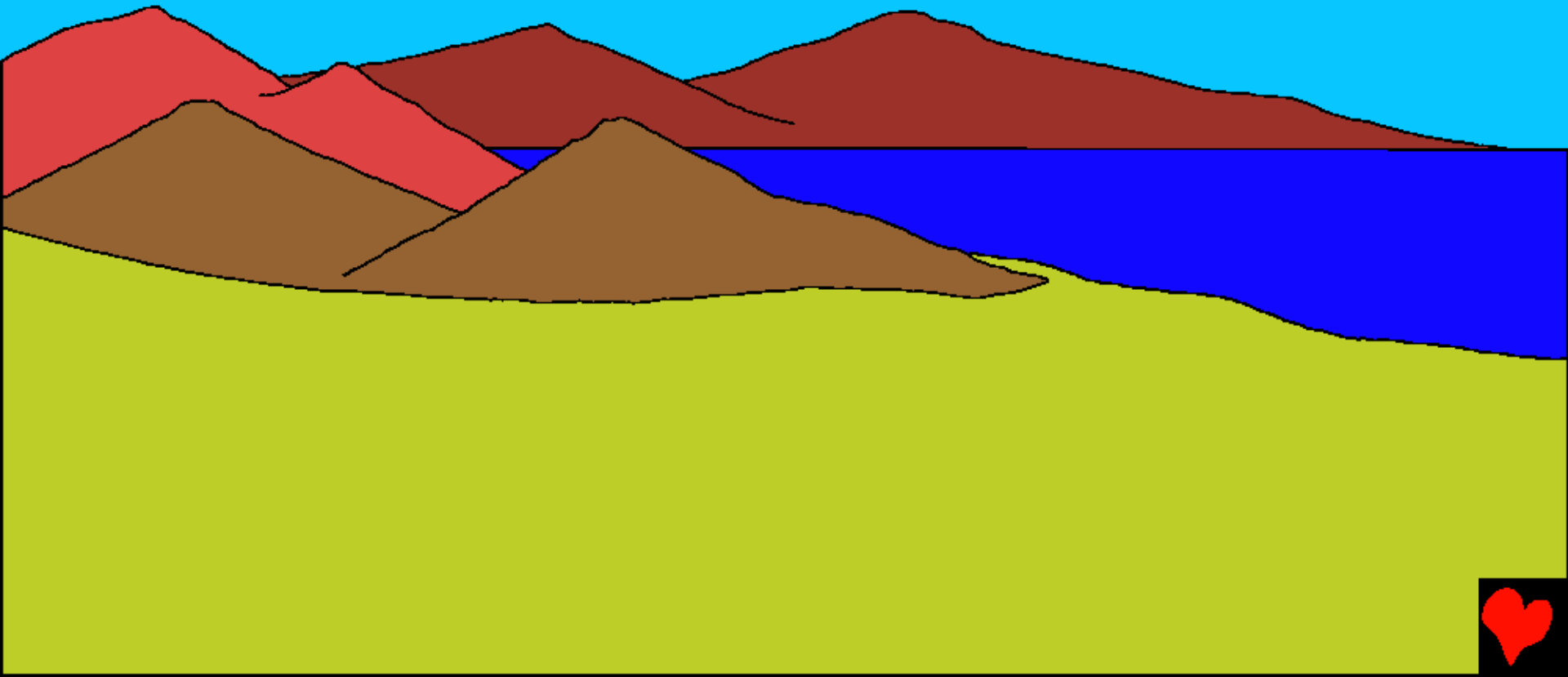
Elu uwa sara mbara nke
ukwu u o dighi kota onu.
Ochichiri gbara ebe
nile nke di omimi.
Mgbe ahu
Chineke
nwee
kwuo
si. "Ka
enwe
e ihe".



Ihe e wee di. Chineke wee kpoo ihe ubochi,
ochichiri buru abali/uhuru chi. Chineke wee
kee ututu/chi obubo na abali/uhuruchi
ubochi nke mbu.



Ubochi nke abuo, Chineke wee chikota odo nmiri nile di na-okpuru eligwe onu. Ubochi nke ato, Chineke wee kwubie okwu si, "ka enwe okporo ala/ala kporo nku". O di ka chineke siri kwuo.



Chineke nyekwara iwu ka ahihia, akwukwo osisi na ukwu osisi nile puta. Ihe ndi ahu nile wee puta ka Chineke siri kwuo. Abali/uhuruchi na chi obubo wee di ubochi nke ato.



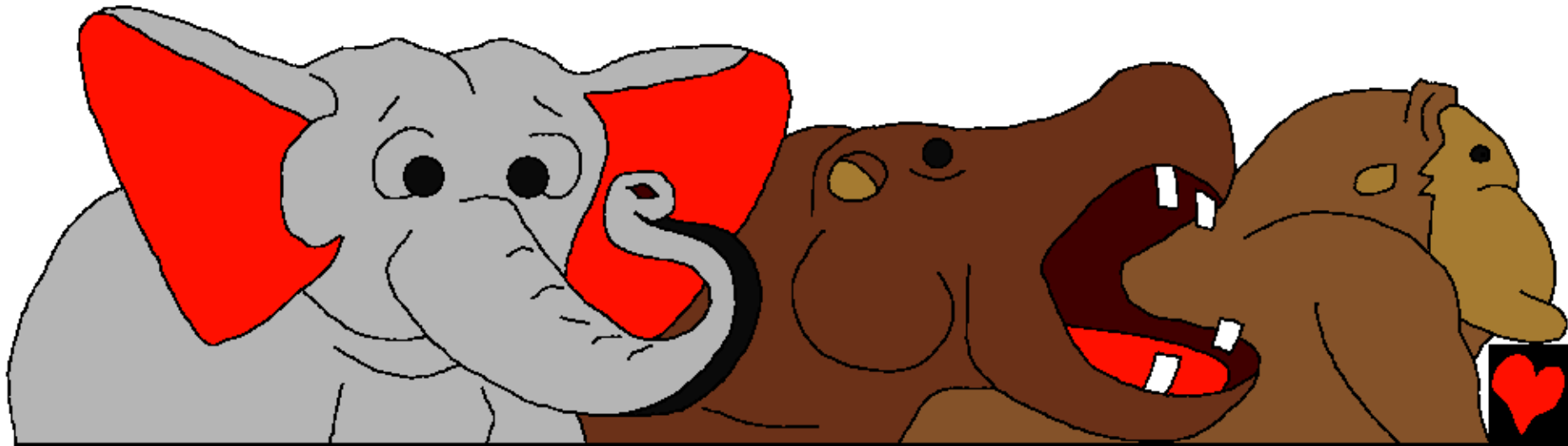
Chineke wee kee kwa anwu, onwa na
kwa kpakpandu nile nke eluigwe nke
mmadu obula apughi iguta onu.
Abali/uhuruchi na ututu/chi
obubo wee di ubochi nke ano.



Umu anumanu, azu mmiri
na umu anu ufe nile bu ihe
ozo chineke kee kwara.
Ubochi nke ise, Chineke
kere nnukwu azu dika
nma agha, umu obere
azu ndi ozo, umu anumanu
nile ka ha wee biri juo
n'ime mmiri na kwa udi
anu ufe nile ka ha no
juo elu ala, ime mmiri na
elu. Abali/uhuruchi na
ututu/chi obubo wee
ndi ubochi nke ise.



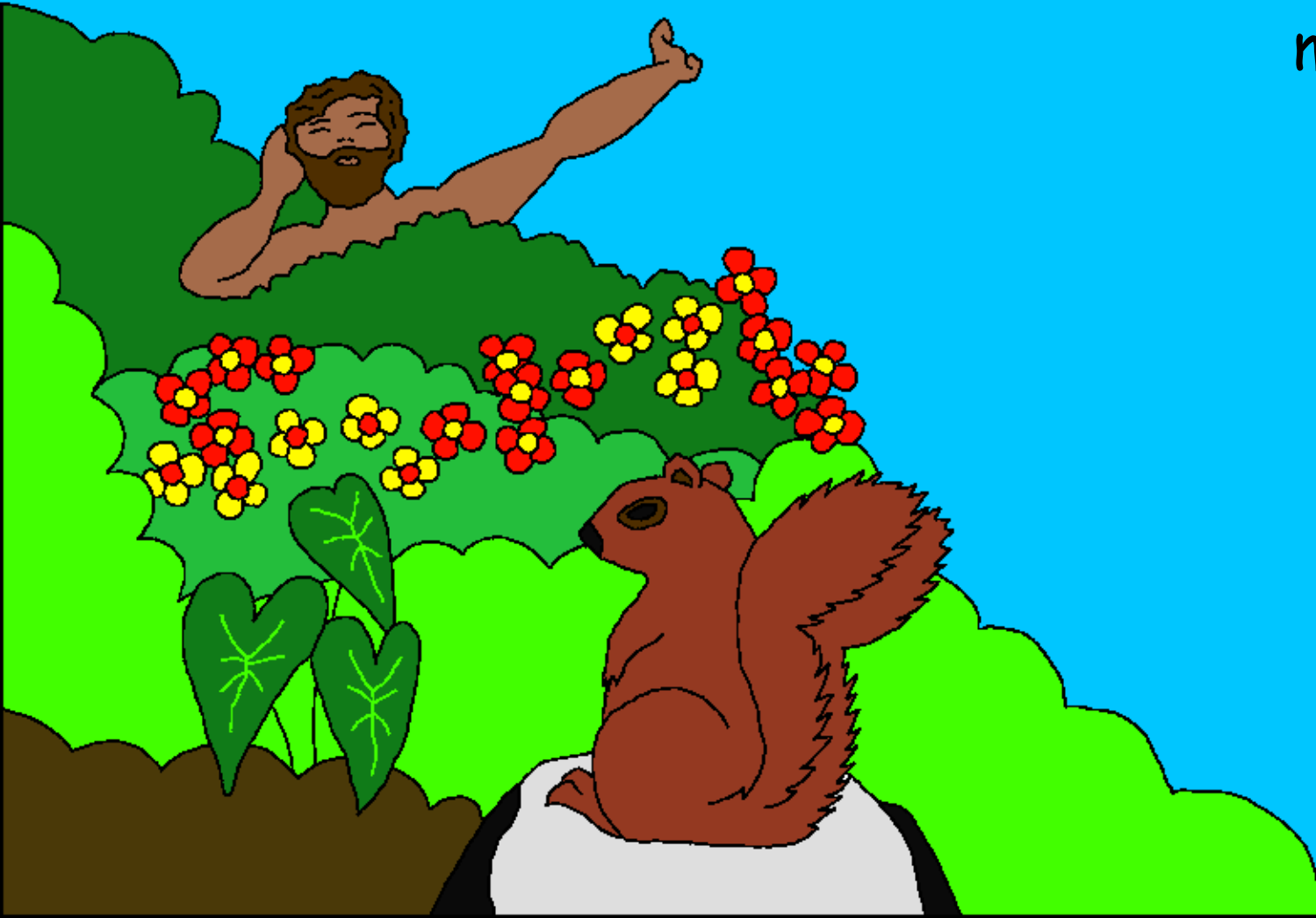
Mgbe nke a gachara, Chineke wee kwuo ozo si, "ka okporo ala weputa ihe e kere ke nile di ndu..." Udi umu anumanu obula nke na-agba agba na kwa nke na-ariari wee di. E nwekwara nnukwu ele nile dika elefanti na kwa beavers. Umu anu ohia ndi ozo dika monkey, anu mmiri dika krokodile, umu anu elu ala dika wiggle wormu, chipmunk, giraffu na kwa pussicat. Chineke kere umu anumanu nile otu ubochi ahu.



Abali/uhuruchi na kwa ututu/chi
obubo di kwa ubochi nke isi.



Ubochi nke isi, Chineke mere ihe puru iche. Ihe nile
diri na udi di nma maka mmadu. E nwere ihe oriri
na-ala akumaku na kwa umu anumanu di iche iche ka
ha na enyere
mmadu aka.



Chineke wee si, "ka anyi kee mmadu n'udi oyiya onwe anyi Ka mmadu buru onye nlekota na kwa nchikota ihe nile e kere kee di n'uwa." Chineke wee kee

mmadu n'udi oyiya onwe
Ya, n'udi oyiya onwe
Ya ka Chineke jiri
kee mmadu...



Chineke gwara Adam
si ya, "rie ihe obula i
choro di n'ime ala
okuku ihe oma.
Mana e rikwala
nke obula miputara
na mkpuru osisi nke
ukwu osisi ezigbo
na amamihe.
Ubochi obula i
riri mkpuruosisi
a i ga anwu."



Chineke ka chi nile wee kwuo si, "o dighi nma ka nani nwoke noro nani ya. A ga m e kere ya onye enyemaka." Chineke chikotara umu anu ufe nile na anu ala nile kpotara ha Adam ka onye ha aha, Adam wee nyee umu anumanu nile aha.



O ga aburiri onye nwere
nnukwu amamihe o jiri
wee nye umu anumanu aha.
Mana abia n'umu anumanu
ndia o dighi nke nwere ike
i bu onye enyemaka Adam.



Chineke wee mee Adam
wee daa nnukwu ura di
omimi, Chineke wee were
otu akuku ahu Adam wee
kee nwanyi. Mmadu
nwanyi a Chineke kere bu
ezigbo onye kwesiri
i bu onye enyemaka
Adam.



Chineke kechara ihe nile n'ubochi nke isii.
Chineke wee gozie ubochi nke asaa ma mee
kwa ya ubochi ezumike. N'ime ala okuku
ihe oma bu Eden, Adam na nwanyi ya
bu Eve nwere nnukwu onu n'iruwere
Chineke isi. Chineke wee buru Chi
ha, onye na enye ha ihe di iche
iche na ezigbo enyi ha.



Oge/mgbe Chineke kere ihe nile

Akuko nke eweputara n'okwu Chineke,
bu akwukwo nso

Di n'ime

Akwukwo jenesis 1-2

"Ogugu na itule okwu Chineke na-enye ihe."
Abuoma 119:130



Ngwucha



Akuko akwukwo nso a na-agwa anyi maka Chineke puru ime ihe nile,
onye kere anyi ma cho kwa ka-anyi mara ya.

Chineke mara na-anyi emehie la ya, nke O kporo nmehie. Ntarama
ahuhu maka nmehie bu onwu, mana Chineke huru anyi na-anya nke ukwu
u O were zite nani otu nwa ya nwoke ohuru na-anya, aha ya bu Jisos ka
O bia nwuchitere anyi onwu na elu obe ma nata kwa ntarama ahuhu diri
anyi maka nmehie anyi. Jisos siri n'onwu bilie ma lahachi kwa eluigwe
ebe O siri bia! O buru na i kwere na Jisos ma yokwa ya mgbahara
nmehie gi, O ga gbahara gi! O ga bia biri n'ime gi ugbua ma gi onwe gi
ga e biri kwa n'ime Ya mgbe ebi ebi.

O buru na i kwere na ihe bu eziokwu, gwa chineke ihe a: Ezigbo
jisos onye nzoputa m, e kwere na I bu chukwu/chineke, i buru mmadu
ka i wee nwuo maka nmehie m nile, ma ugbua I ka dikwa ndu ozo. Biko
bata n'ime ma gbahara m nmehie m nile, ka m nwee ike nwe ndu ohuru
ugbua, ma otu ubochi mgbe m ga abia soro gi wee biri mbe ebi
ebi. Nyere m aka ka m ruwere gi isi ma bie ndu
m maka gi di ka nwa gi. Amin!

Na agu akwukwo nso mgbe nile ka gi na chineke n'ekwurita okwu
ubochi nile! Ozioma Jon isi nke ato amaokwu/usoro okwu nke iri na isi.

