

IAkwukwo akuko nso maka umu ntakiri
a na-egosi

Nwa a hụrụ
n'anya karịa
wee ghoḡ
Ohu



Ode akwukwo: Edward Hughes

Onye kuziri ya: Byron Unger; Lazarus
Alastair Paterson

Onye haziri ya/Onye nhazi:
M. Kerr; Sarah S.

Onye tughariri okwu a: The Bible Society of Nigeria

Onye biputere akwukwo: Bible for Children
www.M1914.org

©2023 Bible for Children, Inc.

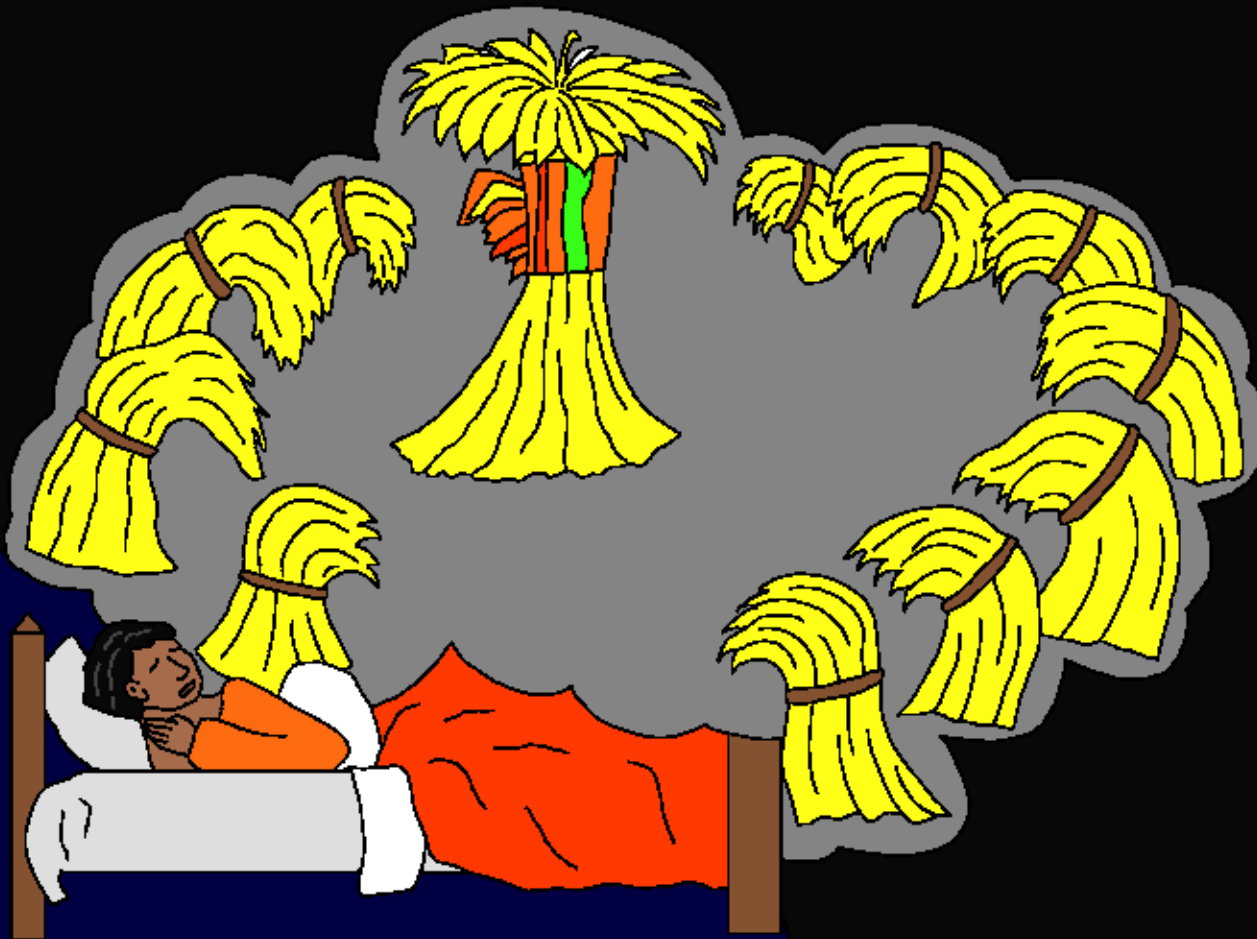
Ike/ikike: i nwere ike ma obu ikike i biputa
akuko a nani i gaghi ere ya ere.



Aisak nwere obi uto. Nwa ya nwoke bu Jekob alotala. Obuna Iso nabatara nwanne ya ahụ o kwere nkwa igbu. Ma, obi adighi umu Jekob mma n'ihi na Josef, bu nwanne ha nke nta, ka nna ha huru n'anya karia.



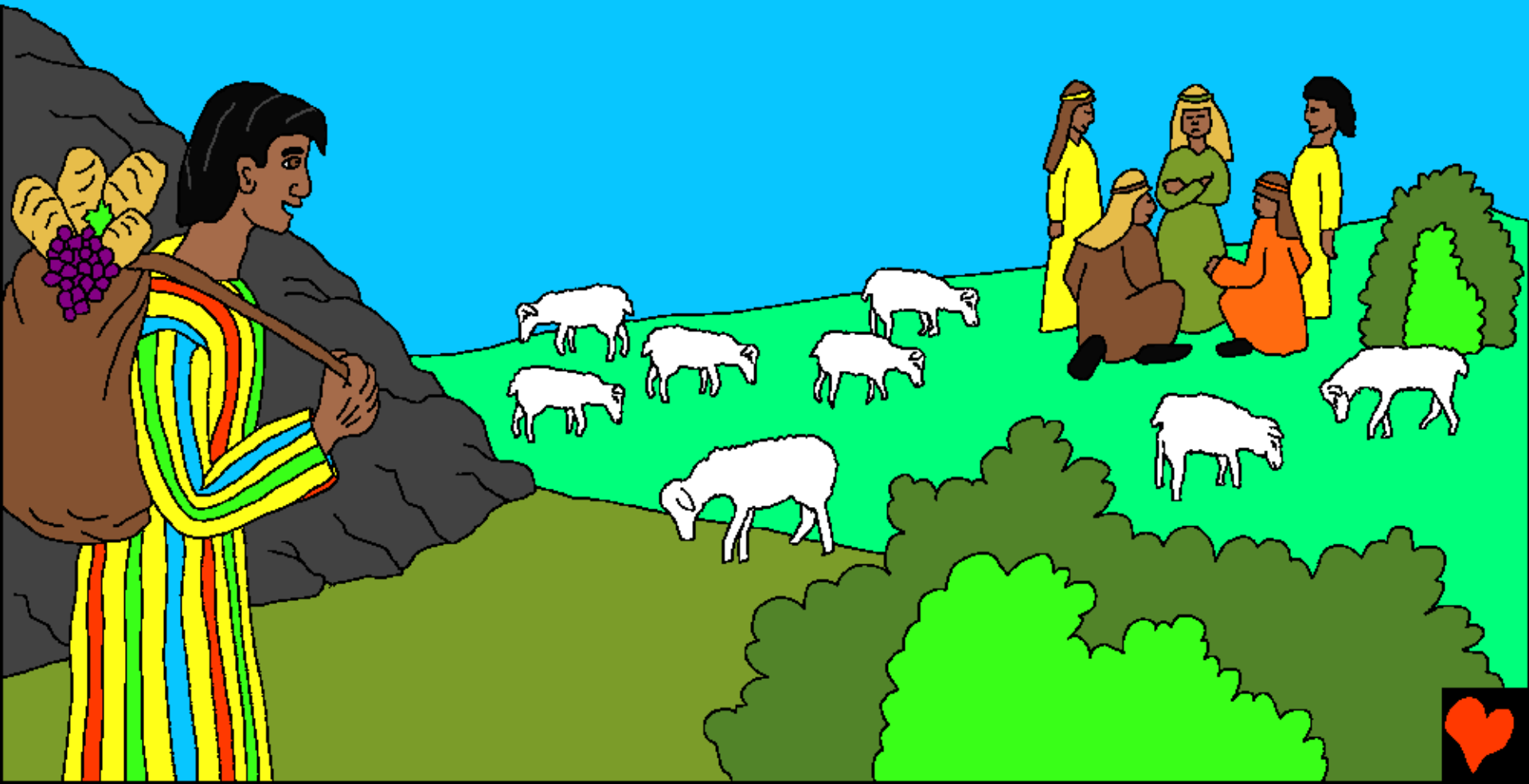
Ụmụnne Josef were iwe karịa mgbe ọ gwara ha nro ya. Josef kwuru, si: “Ogwu ọka m guzoro ogologo, ùkwù ọka ụmụnne m na-ehulatakwa na nsọpụrụ.” Nro a pụtara na Josef ga-adị mkpa karịa ụmụnne ya.



Na nrọ nke abụọ Josef
rọrọ, anyanwụ, ọnwá
na kpakpando kpooro
ya isiala. Ọbuna nna
ya Jekọb were iwe n'ih
na o buliri onwe ya elu
karịa ndị mụrụ ya na
ụmụnne ya.



Otu ụbọchị, Jekọb zipurụ Josef n'ọhia ebe ụmụnne ya na-azụ atụrụ ha. Ụmụnne ya hụrụ ka ọ na-abịa. “Ka anyị gbuo onye nrọ a,” ka ha tiri na mkpu. Josef amaghị ihe ize ndụ dị n'ihu ya.



Reuben, nwanne ya nke okenye ekwetaghị. O kwuru, si: “Anyị ekwesighị iwufu ọbara.” Le, olùlù dị, ya nwụa n'ebe ahụ. Reuben mere atumatụ inaputa Josef n'abali ahụ.



Mgbe Josef
rutere, ụmụnne
ya wee jide ya,
yipụ uwe mwụda
ahụ na-acha uhie
uhie nke Jekob
mere maka nwa
ya nwoke ọ hụrụ
n'anya karịa. Ha
wee tūba ya
n'olulu ahụ
jogburu
onwe ya.



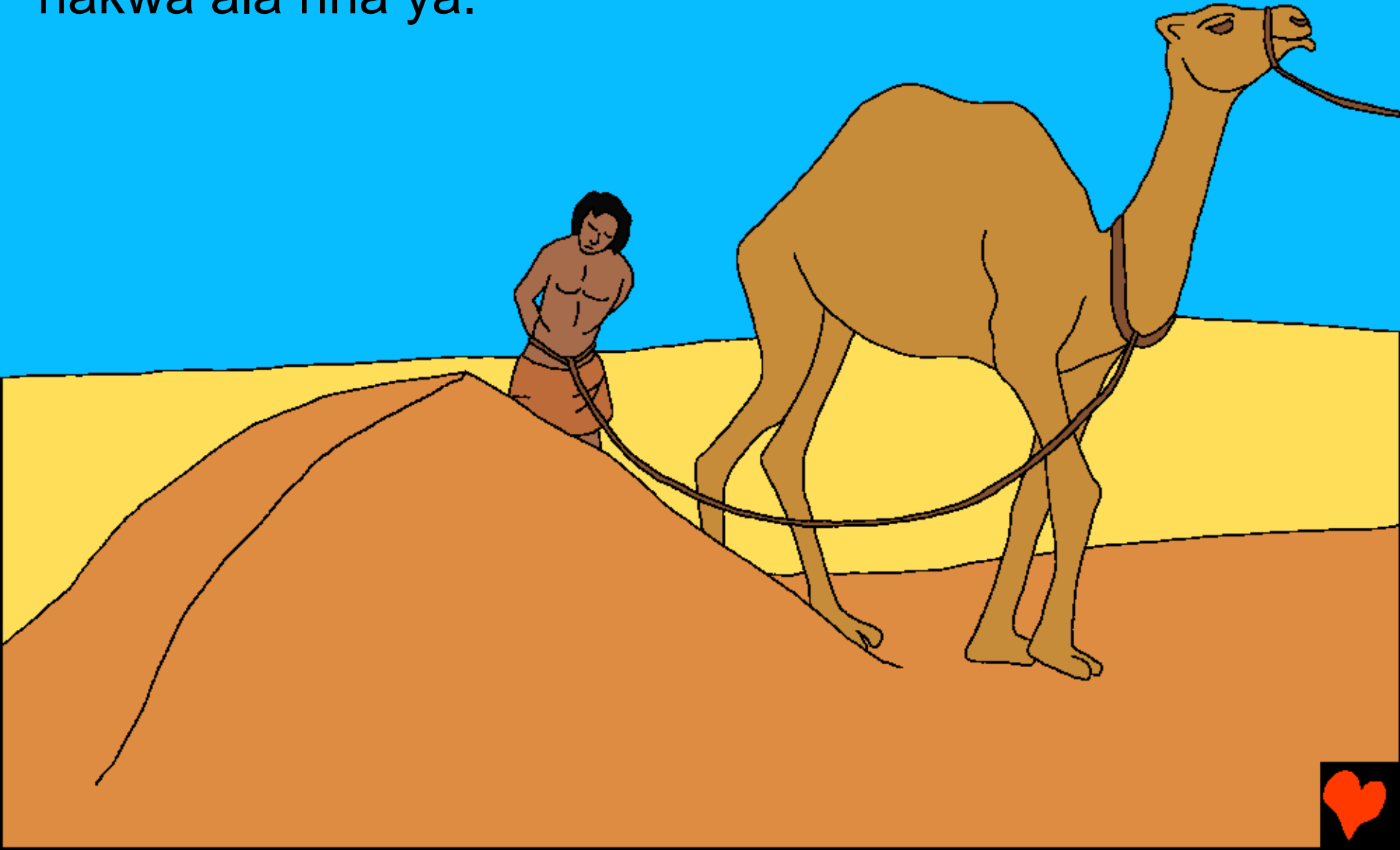
Ma mgbe Reuben na-anoghi, igwè camel wee bia nso ka ha na-eje Ijipt di anya. Juda, bu nwanne ya, tikuru, si, “Ka anyi ree Josef.” E wee mee nkwekorita ahụ.

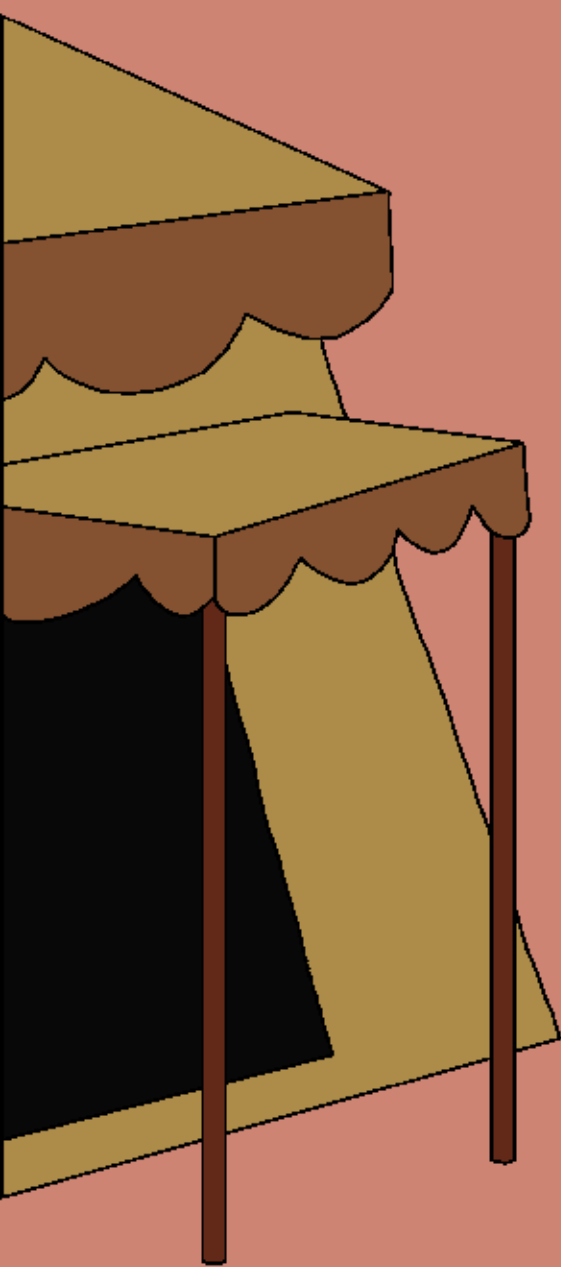


Ha rere Josef n'ego ọlaocha iri abụọ.



N'ibe ákwá na egwu, Josef nọ na-ele anya na-enweghị enyemaka ka kamel ahụ duuru ya pụo n'ezi na ụlọ ya nakwa ala nna ya.





“Nke a bụ uwe Josef?
Ọbara zuru ya ahụ,
anyị hụrụ ya n’ime
ọzara.” Ụmụnna ndị
ahụ obi tara mmiri
mere ka Jekọb kweta
na anụ ọhịa gburu
nwa ya nwoke ọ hụrụ
n’anya karịa. Jekob
wee dọwa uwe-ya, rue
uju. Ọ dighị onye
nwere ike ikasi ya obi.

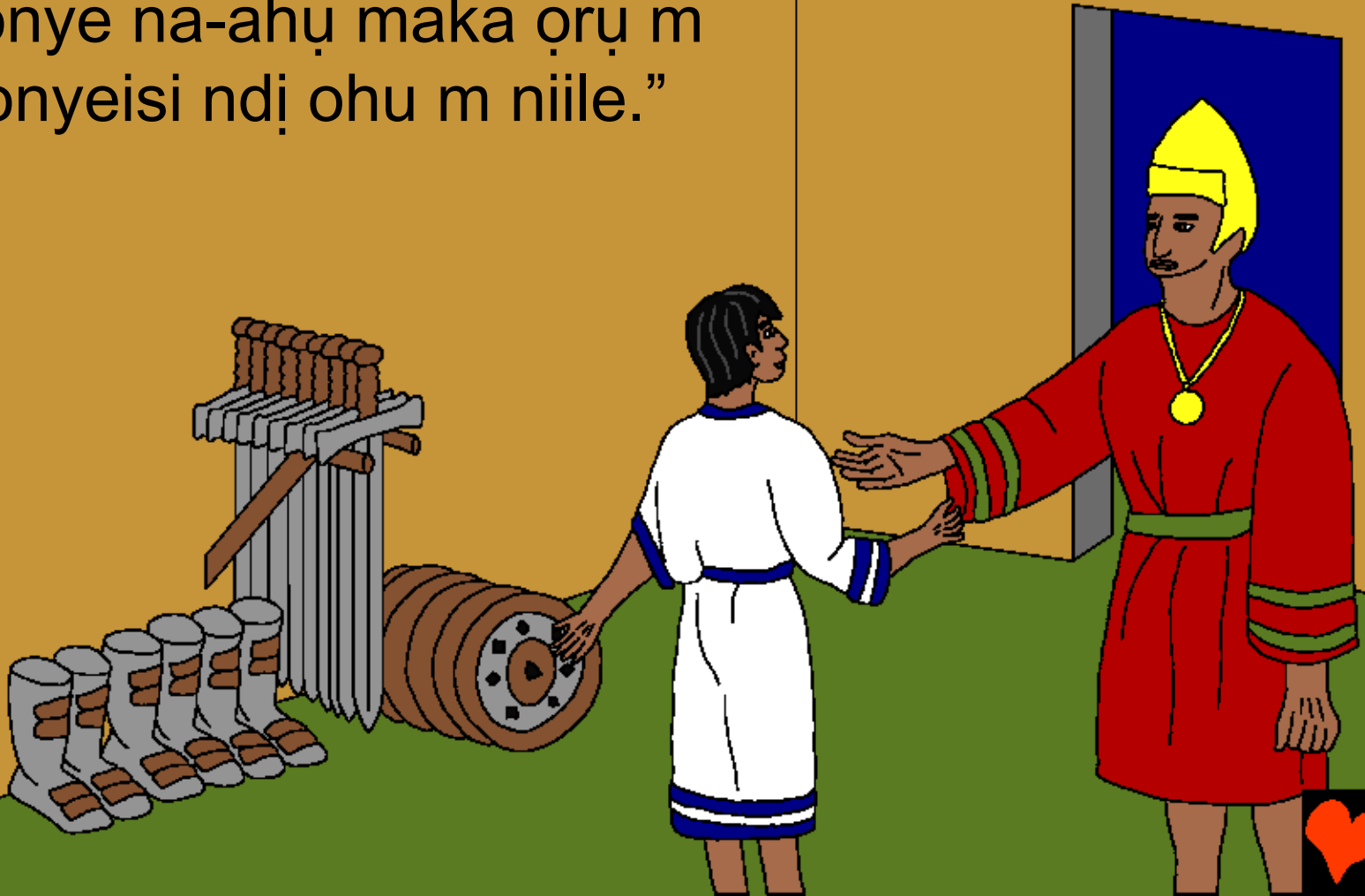




N'Ijpt, ọ ga-aburiri na ụjọ
turu Josef ebe ọ nokwa
naani ya. Ma eleghị anya,
ọ gusiri ya agụụ ike ila
n'ulo. Ma ọ pughi igbapu.
Ọ bu ohu n'ulo Potifa, onye
Ijpt a ma ama. Potifa huru
na Josef na-agbasi mbo
ike mgbe niile nakwa na a
puru itukwasị ya obi.



Potifa gwara Josef okwu otu ubochi si, "Ihe niile i na-eme na-adị mma." "Chineke nonyeere gi. Achoro m ka i buru onye isi ndi ohu m, onye na-ahu maka oru m niile na onyeisi ndi ohu m niile."



Chineke nyere Pọtifa ezi
ihe ubi na ọtụtụ akụ di
iche iche n'ihị Josef. Josef
bụ nwoke a ma ama, ọ ka
tụkwasịrị Chineke obi ma
na-ejere ya ozi. Ma
nsogbu biakwasịrị Josef.



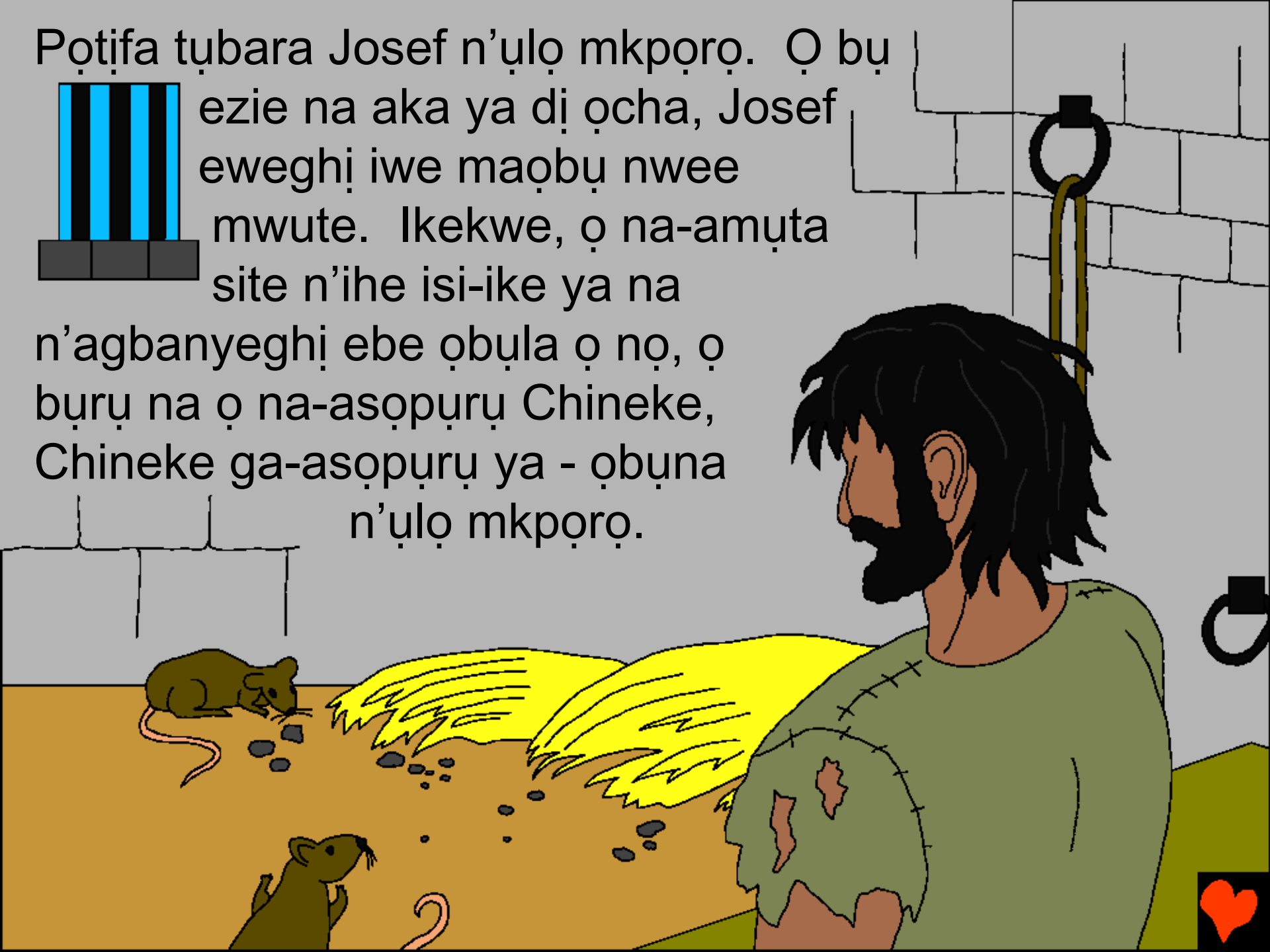
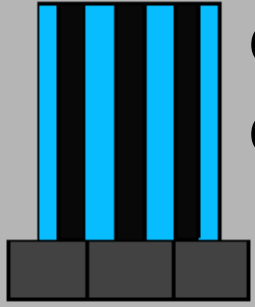
Nwunye Pọtifa bụ ajoy nwaanyi. O gwara Josef ka o nochie onodu di ya. Josef wee ju. O gaghị emehie Chineke site n'imejọ Pọtifa. Mgbe nwanyi ahụ nwara imanye ya amanye, o gbara oso. Ma o jidere uwe ya.



“Ohu gi wakporo m,” ka nwunye Pọtifa mere na mkpesa. “Lee, nke a bu uwe mwuda ya!” Iwe were Pọtifa nke ukwu. Ma eleghị anya, ọ ma na nwunye ya na-agma ụgha. Ma ọ ga-emeriri otu ihe. Gini ka ọ ga-eme?



Potifa tubara Josef n'ulo mkporo. O bu
ezie na aka ya di ocha, Josef
eweghi iwe maobu nwee
mwute. Ikekwe, o na-amuta
site n'ihe isi-ike ya na
n'agbanyeghi ebe obula o no, o
buru na o na-asopuru Chineke,
Chineke ga-asopuru ya - obuna
n'ulo mkporo.



Nwa a hụrụ n'anya karịa wee ghoọ Ohu

Akuko nke eweputara n'okwu Chineke,
bu akwukwo nso

Di n'ime

Jenesis Isi nke iri atọ na asaa,
Jenesis Isi nke iri atọ na itoolu

“Ogugu na itule okwu Chineke na-enye ihe.”
Abuoma 119:130



Ngwucha



Akuko akwukwo nso a na-agwa anyi maka Chineke puru ime ihe nile,
onye kere anyi ma cho kwa ka-anyi mara ya.

Chineke mara na-anyi emehie la ya, nke O kporo nmehie. Ntarama
ahuhu maka nmehie bu onwu, mana Chineke huru anyi na-anya nke
ukwu u O were zite nani otu nwa ya nwoke ohuru na-anya, aha ya bu
Jisos ka O bia nwuchitere anyi onwu na elu obe ma nata kwa ntarama
ahuhu diri anyi maka nmehie anyi. Jisos siri n'onwu bilie ma lahachi kwa
eluigwe ebe O siri bia! O buru na i kwere na Jisos ma yokwa ya
mgbahara nmehie gi, O ga gbahara gi! O ga bia biri n'ime gi ugbua ma gi
onwe gi ga e biri kwa n'ime Ya mgbe ebi ebi.

O buru na i kwere na ihe bu eziokwu, gwa chineke ihe a: Ezigbo
jisos onye nzoputa m, e kwere na I bu chukwu/chineke, i buru mmadu ka
i wee nwuo maka nmehie m nile, ma ugbua I ka dikwa ndu ozo. Biko
bata n'ime ma gbahara m nmehie m nile, ka m nwee ike nwe ndu ohuru
ugbua, ma otu ubochi mgbe m ga abia soro gi wee biri mbe ebi
ebi. Nyere m aka ka m ruwere gi isi ma bie ndu
m maka gi di ka nwa gi. Amin!

Na agu akwukwo nso mgbe nile ka gi na chineke n'ekwurita okwu ubochi
nile! Ozioma Jon isi nke ato amaokwu/usoro okwu nke iri na isi.

