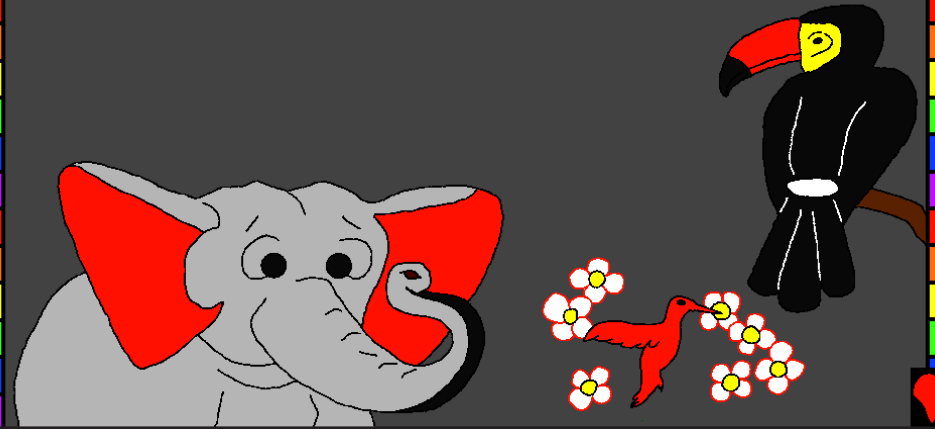


Ira ti orise gba da urun dede



Onẹ to ya: Edward Hughes
Onẹ to jọlọ wewe ro tua lẹ: Byron Unger; Lazarus
Alastair Paterson

Onẹ to gba owun ajamiren gba ya lefun:
www.christian-translation.com
Onẹ to gba tsutse tsé: Bob Davies; Tammy S.

Ita 1 ni 60

M1914.org

Bible for Children, PO Box 3, Winnipeg MB R3C 2G1 Canada

Atse: Woma atse gba mini gba ifoto iwe ghan we, tabi di wo ma ta.

19

20

21

22

23

Oritse ma gin enẹ tse urun burukun gidije,
ti wo kpe win erẹ. Uku dẹ gba san iwen erẹ.

Oritse fiọfọ enẹ gidigbo okaran oṭo nro Jisos, do wa
wa ku ni origho agbagba gba san iwen erẹ gbẹ.
Botojogha we oritse mini mu erẹ nẹ ji enẹ.

Wo mafẹ lude kurinọ erẹ rẹ, gin gbo oritse: oritsemi
toghan, mo nẹ ukpioronfo gin Jisos ku gbẹ mi
botojoghawe dẹ osenji gba wi eṣe. Mo bie wa wo
eṣe gba mini bu wo winọ gberegbesingbe. Time
yin demi gba mini gbe eṣe mi nu wẹ wo
tsitioma gbe re, itse. Jon 3:16

Ro iwe fifen du wo bo oritse fọkpọjọ kpojo!

Itsekiri

Nesin we da enẹ? Baibo we, oṣo orise, gin bene
ba te da enẹ ireye ni ira to bogho we. Orise da
oniye oṣogua oka kpe wun Adamu.

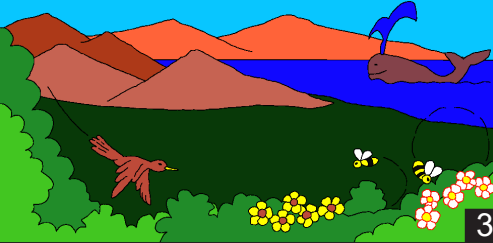


Ibu to wi aṣe owin oritse gba da Adamu. Ira ti oritse
gba da mi ni Adamu, win Adamu gba di ireye. Oka
ba araro ni ugba sisengua ta kpewin Ideni.

1

2

Di oritṣe esi da Adamu, oka tṣogua da eye sisengua biri urun ebobo gidije. Kpele kpele oritṣe ka da ukpotiki Atu, Iflawa to biri emi firifiri, Igo Egbele to biri ilele to sṣeguan, oyin, Eya kporokporo to yi ni ino omi, umato ni oko.



3

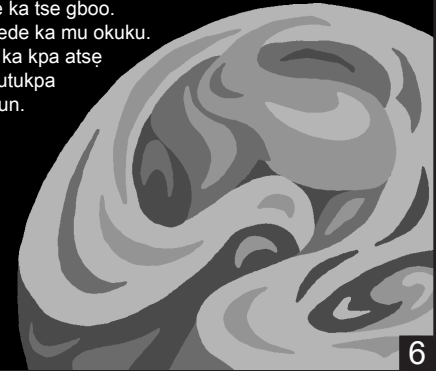
Tualebale wa, di oritṣe di esi da urunkunru, urunkurun ewi no ba bo gho oritṣe. Ene urunkurun. Ene itupka biri okuku. Ene ere ale gba wino. Oritṣe ka mewo nutse.



4

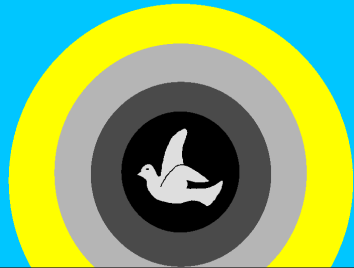
Tualebale wa, Oritṣe ka da eye biri onon.

Eyewe ka tse gboo. Ubo dede ka mu okuku. Oritṣe ka kpa atse gin di utukpa do le fun.



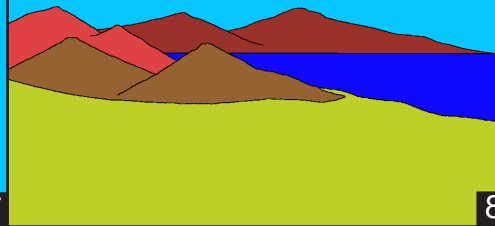
6

Utukpa ka lefun, oritṣe ka utukpawe onon oka kpe okukuwe orun. Ale ojeren gbara to owuro oka tse ojo otso gua.



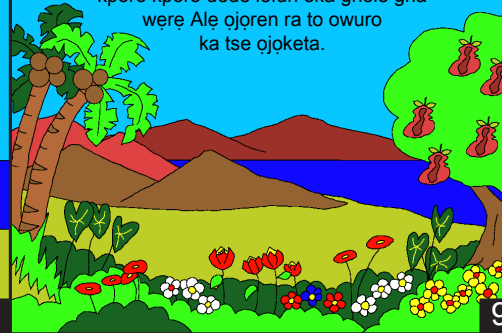
7

Ojo keji oritṣe ka gin di omi to wi ale eyewe dede gba jo ojo keta oritṣe ka gindi ale gbigbe do lefun. Oka gha were.



8

Oritṣe ka kpa atse gin di isun biri iflawa egin tietie biri kporo kporo dede lefun oka ghele gha were Ale ojeren ra to owuro ka tse ojoketa.



9

Ni eyin eren oritṣe ka da orunrun, biri ononon, biri agura gidije ta mini ka. Ale ojeren gba to owuro ka tse ojo keren.



10

Eja biri urun to wi omi biri egbele tofo ni urare wosi to ni ewo oritṣe. Ojokaru oritṣe ka da eja kporo dede to wi omi biri eja tietie tsi tsi eji sandiri, biri egbele ti esen ro sin ta kpe wi ugomugo biri egbele tietie to ka gba ko erin gba tsere. Oritṣe da eja ejukenekuto gba kon omi dede biri egbele kenekuntoro gba kon ale biri ere biri odo. Ale ojeren gba to owuro ka tse ojo ka ru.



11

Ni eyin eren, oritṣe ka kpatse. Oka gin, "urunkurun to wi ino ale we do lefun ..." Eju erankeran dede imuren biri itolo eguale biri urun to guo ni ale gba ren dede ka lefun. Iye meriko biri eran kporokporo to ka tse onon omi onon oke. Esugbe biri ikalo. Ajara biri iposi. Erankeran to wi aleyewe dede win oritṣe da ni.

Ale ojerenwe gba to owuro oka tse ojoketa.



12

Ojokofawe oritṣe ka tse urun miren - Urun kpfaki. urunkurun dede wi ale gbi ireye ren. Oje wino biri eran oko to wa sen ireye. Oritṣe ka gin ke "Aghan wa di ene da ireye ni aghora ene. Do ka ni atse ni origho urun te ne da tsi ale yewe dede." Oritṣe ka ghele da ire ye ni agho ro. Bi oritṣe te gha were won te tse gba da ire ye.



13

Oritṣe ka gin gbi Adamu. "Je urunkurun to ma wue nu gbawe. Derekedede eso egin to ka mu oye gboniye ti a gba ma urun burukun biri urun to San ma je wuno. Wo ma je eso egin we wo wa lati ku".



14

Oritṣe oluwa ka gin. "Esan gin di olokeren ka naka wino. Mowa ma olutieyin gbe." Oritṣe ka ko eran biri egbele dede wa gbi Adamu. Oka gin di Adamu mo oruko gbi gbaghan dede. Adamu lo ogban biri oye gba mu oruko gbi aghan dede. Kenikedede egbele biri eran ghanwe dede ene ti oritṣe gbamini tse olutie gbi Adamu.



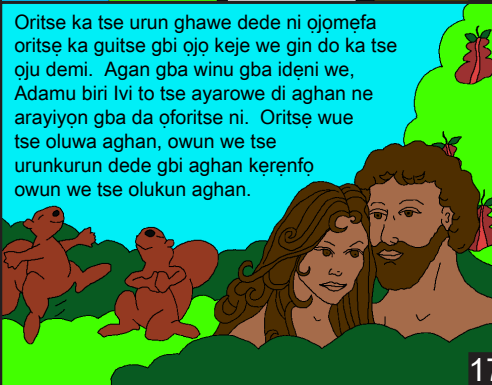
15

Oritṣe ka je di Adamu sun ejoron to jen. Oritṣe gba esu iyari okan no ara Adamu gba tse olobiren. Oloborenwe ti oritṣe gba gho okari gin owun we san do tse olu tieyin gbi Adamu.



16

Oritṣe ka tse urun ghawe dede ni ojomefa oritṣe ka guitse gbi ojo keje we gin do ka tse oju demi. Agan gba winu gba ideni we, Adamu biri lvi to tse ayarowe di aghan ne araiyion gba da oforitse ni. Oritṣe wue tse oluwa aghan, owun we tse urunkurun dede gbi aghan kerentfo owun we tse olukun aghan.



17

Ira ti orise gba da urun dede

Ita to lefun ni no ofo orise to wi iwe fifen, ta kpewin Baibo

Owini

Jenesis 1-2

"Ofoto gin gin ofo Orise ma wino re to mu utukpa gbo ne." Sam 119:130

18