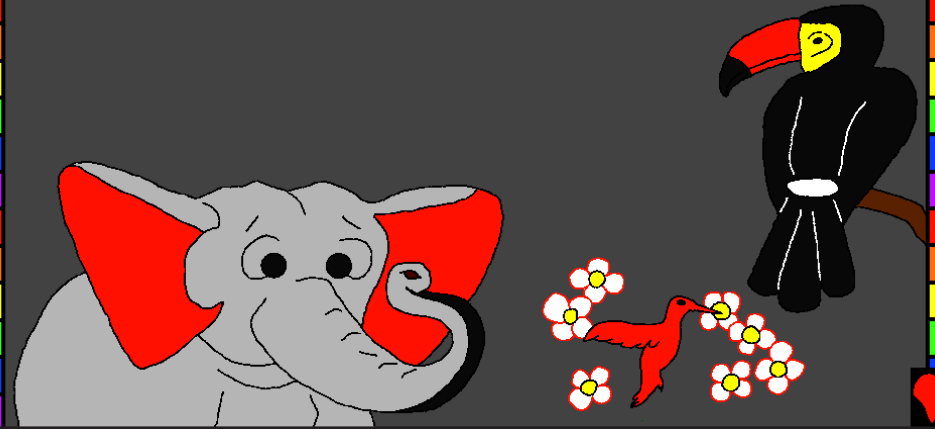


Alɪwaatu ndu Ɛso labi pidiɲa yo



Mba pama takayaɲ yo: Edward Hughes
Mbu piwɩty yo: Byron Unger; Lazarus
Alastair Paterson

Weyi elizi takayaɲ ne kabiye taa yo:
www.christian-translation.com
Takayaɲ coluyu: Bob Davies; Tammy S.

Tom 1 ; 60 yoɔ

M1914.org

Bible for Children, PO Box 3, Winnipeg MB R3C 2G1 Canada

Takayaɲ yoɔ waɖe: iwɛni waɖe se uma tom tɩne, yee upɛdiy ke yo.

19

20

21

22

23

Kabiye

Kɩbaylo suma se dɩlaba mbo
pɩfeyi dɛu yo, eyaa bo se kiweekum. Nungbaan
hom-to ndu twɛɛ ne picɛlɩni kiweekum le sum.

Ezuma mbo kɩbaylo soɔli-dɔ pɩtfeyi le etiyina e-piyalo,
yesu, se esi kaamanɲay yoɔ ne eheyi da-kiweekum lone
taa. Yessu fema ne ekpa esotaa! Leelee yo kɩbaylo
pɩzɩɩ e-kpey dɔ da-kiweekum.

Yee nsoola se nyele na-kiweekum, heyi tɩne eso:
kɩbaylo, metisaa se yesu siba mo-yoo ele edaanweɔ wezuu.
Metediɲ-ɲ koo me-wezuu cau taa ne nkpey-m ma-kiweekum
ne ma-pɩzi maɖaani wenav wezuu kifalo leelee yo, ne
powayi-le ma nanɲ dɩwe tam. Sunam ne mancaɲwezuu ne
picɛlɩ nanɲ ezi na-piyalo yo. Pɩla mbo. Yohaneesi 3:16

Lkahi Takayaɲ kiɖeɖeya ne iyooɖɩni Ɛso kɩyakɲ tɩɲa!

Alabi-dɔ? Takayaɲ kiɖeɖeya, Ɛso Tom,
kediɲ-dɔ eyaa dipaziye.

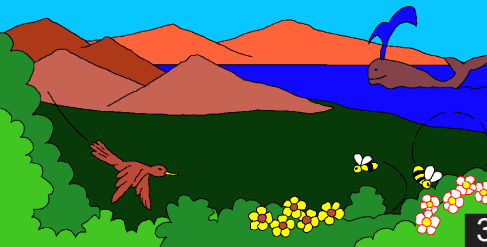
Pileɖaa, Ɛso labi kajalay eyu ne eyaa-i se Adam. Mɩzɩɩ Ɛso
kɩpayaɲ ne elabuna Adam. Ɛso fezi Adam mɔɔɲ tee wezuu
fezuu le, episi wazuu to. Emaɲna e-ti kaɖay mamaaci nɲa
payay se Edeni yo ka-taa.



1

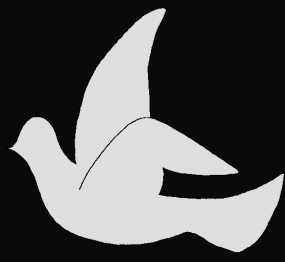
2

Pwɔ ne Ɛso laki Adam le, elabi ejaɖe kibandɛ nɔi wɔndu kibandɔ su ɔi-taa ɔo yo. Ɛso la piyisi ne feyɔ, tuɔ heto sozɔn ɔndɔ ne tiɔ sozɔn, sumasi hundo kiɖeɖetu ɔnzi ne tuɔ nangbaɖiyɔ, tengu taa kpakpasi sozosi ne kɔgɔlɔmɔ sɔtu ɔna. Ɛso laba pitɔɔa payi.



3

Kiɖe tee le, pwɔ ne Ɛso pazi labɔ le, nabɔyɔ taawee ne pitasini Ɛso. Ɛyaa taawee, lona taawee, wɔndu taawee. Muntsoɔ ne cikpendoo pataawee. Ɛsɔɔaa ne hade pataawee. Deɖe ne cee pataawee. Ɛso weyi efeyi ne ɖipaziye yo eɖeke eewena. Ne Ɛso la Ɛ-tɔmtye!

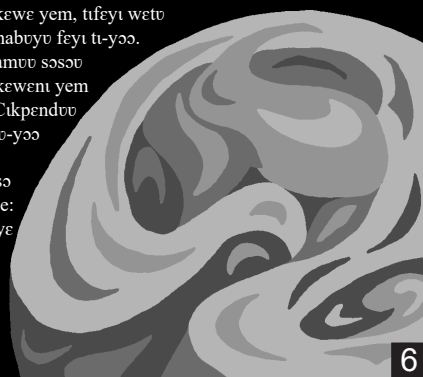


4

Dipaziye taa le, Ɛso labi esɔɔaa ne tataa.

5

Ne tetu kewe yem, tifeyi wetu natyɔ, nabɔyɔ feyi ti-yoo. Ele lungamɔ sozoo nakoyɔ kewenti yem lemm. Cikpendoo koyuu ku-yoo kpemm. Peeye Ɛso yooɔaa se: "Ɗalimtye ehandi".



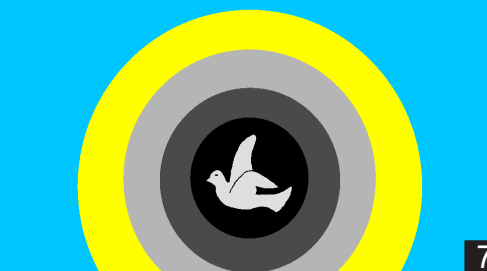
6

Ne ɖiɖi ɔnaandi ɖɔɖɔ. Ɛso yaa ɔnalimtye se wɔsɔɔa ne cikpendoo se ɖooɔaa. Doo yu ne teu fe: Kiyaku kajalay ɔngɔ le.

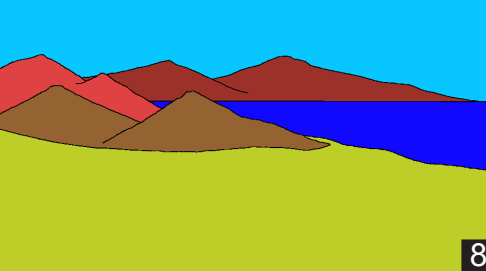
Kiyaku naale ɔngɔ wiyɛ le Ɛso ɔsozi tengu lum ne lum ndi ndi mbu piwe esotono ne ki-hade kiɔ yo. Kiyaku tozo ɔngɔ wiyɛ, Eso to se: "Tetu wayway ɔndɔ ilu". Ne pɔla mbu.

Ɛso ha noo ɖɔɖɔ ne ɔntu, tuɔ heto, cokoo ne tiɔ poɔ. Ne pɔla mbu. Ne doo yu ne teu fe ne pɔke kiyaku tozo ɔngɔ.

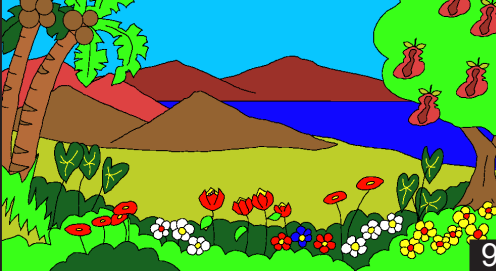
Pisay ne Ɛso la wɔsi ne fenay ne tuɔi sakiye nzi nooyɔ ebizɔ ekali yoo. Ne doo yu ne teu fe ne pɔke kiyaku naza ɔngɔ.



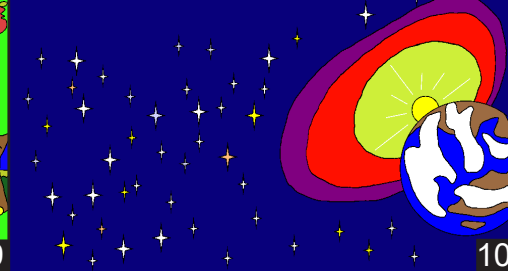
7



8



9



10

Tete kpina ndi ndi wena awey lim taa yoo ne sumasi pitalinaa yo. Kiyaku kagbaanzi ɔngɔ wiyɛ Ɛso labi kpakpasi sozosi ne cikpesi, sumasi sozosi ne cikpesi. Ɛso labi kpakpasi ndi ndi ne susu ne lum ne sumasi ndi ndi se siwee tetu yoo, lim yoo ne esooɔaa. Doo yu ne teu fe ne pɔke kiyaku kgbaanzi ɔngɔ.



11

Piwayi le Ɛso tasi yooɔoo. Ɛto se: "Tetu elɔli mbu mbu piwe wezoo yo..." Kpina ndi ndi lu. Tuɔ e ɔkewee ne ɔnaamsɔ tetu ne lum taa kpina ɖɔɔ ɔna. Tigbayuɔ ne ɔtu. Kataɔnikasi ne namuɔ. Kpina tuɔa payi Ɛso labi kiyaku ngɔ.

Doo yu ne teu fe ne pɔke kiyaku loɔo ɔngɔ.



12

Kiyaku loɔo ɔngɔ wiyɛ le, Ɛso laba nabɔyɔ kifam. Ejaɖe ɔsozoo ne ɖiɖaɔi eyu. Toonay kewe fasti taa ne kpina se pisina-i. Ne Ɛso to se: "Dɔla eyu ne ewee si ɖiwɔ yo. Ekena mbu pitɔɔa payi piwe tetu yoo yo pi-kibayɔ." ƐSO LA EYU SI EWEU YO, ELABI EYU SI EMAɔMAɔ YO ...



13

Ɛso yooɔna Adam. "Too mbu ɔi-liu we kaɖay taa yo. Ele taatoɔ tiɔ ngɔ kyeki se eyu etɔli mbu piwe ɖeu ne mbu piweyi ɖeu yo. puwiyɛ nɔi ɔtoki-ku yo ɔsiki".



14

Ne Ɛso to se: "Pifeyi ɖeu se eyu ewee eɖeke. Malaki-i suniyɔ nooyɔ." Ɛso kona Adam esɔɔaa sumasi ne kpina tuɔa. Adam yaa patɔɔa hɔla. Pwɔltyɛ se eewe loɔ siɔɔ. Ele sumasi ne kpina ana pa-taa le Adam tana egbaado weyi ele piɔtyɛ esuni-i yo.



15

Ɛso yeba ne ɖom nabɔyɔ kpa Adam ne eɖoo ezi esiba yo. Ne elzi e-sinay leeka ne elabuni halɔ. Halɔ weyi Ɛso laba yo, eewe camtye ne eke Adam egbaado.



16

Ɛso labi pitɔɔa payi kiyakuɔ loɔo. Pisay ne Ɛso wazi ki yaku lobe ɔngɔ ne elabi-ku kiyaku kihezoo. Edeeni kaɖay taa le, Adam ne e-halɔ Eya paawe heziye taa toovenim aluwaato ndu paɔnaɔay Ɛso yo. Ɛso eke pa-Kipayɔ, po-yoo conyɔ ne pa-taalɔ.



17

Aluwaato ndu Ɛso labi pitɔɔa yo
Tom ndu tilina Ɛso jolo yo, Takayay kiɖeɖeya
Panay to
Dipaziye 1-2
"Ɗo-Tom ɖɔsɔyɛ hay ɔnalimtye."
Keya 119:130

18