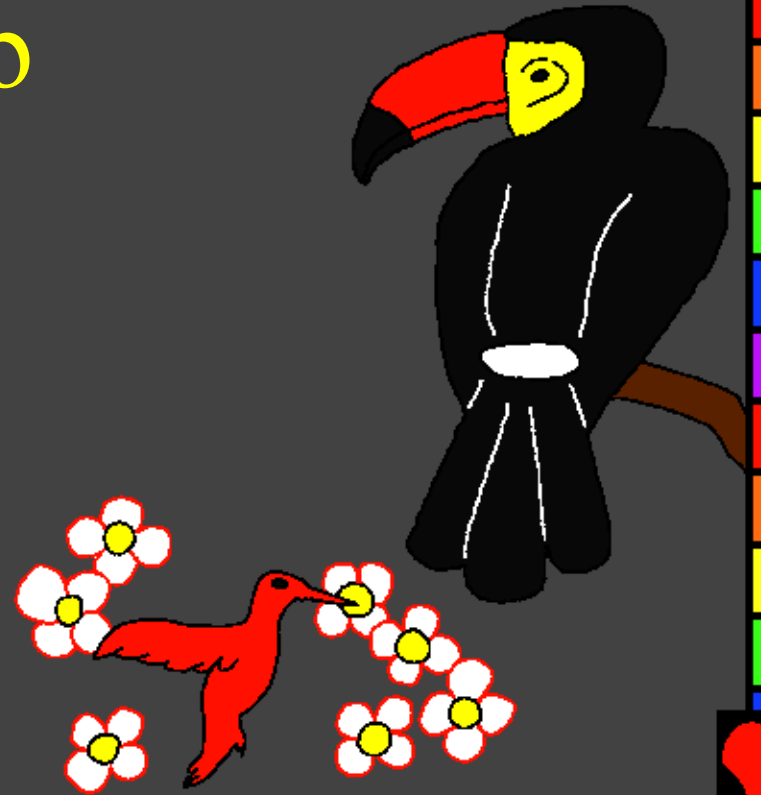
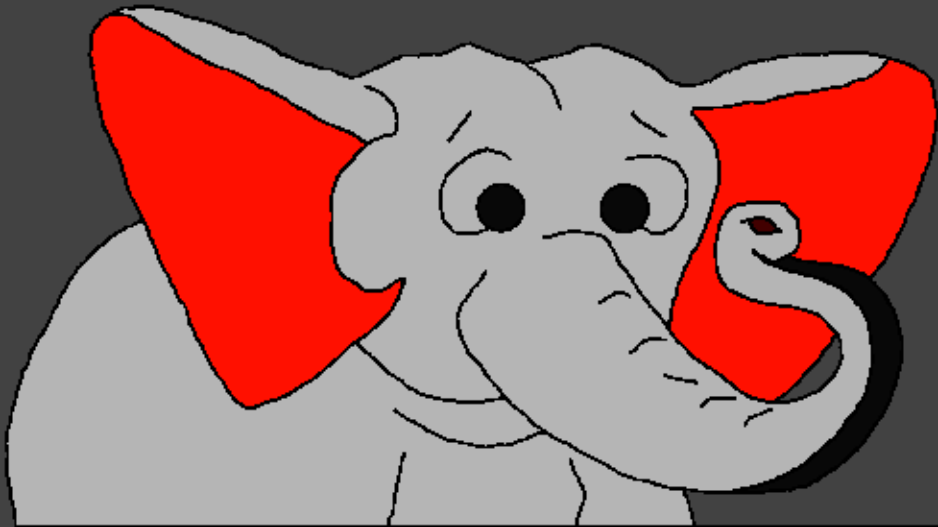


Piya takayay kidedeya
wulu

Alıwaatu ndu Esɔ
labı pıdıña yɔ



Mba pama takayay yɔ: Edward Hughes

Mbu pɔwɔlɔ yɔ: Byron Unger; Lazarus
Alastair Paterson

Takayay cɔlɔyɔ: Bob Davies; Tammy S.

Weyi elɔzɔ takayay nɛ kabɔyɛ taa yɔ:
www.christian-translation.com

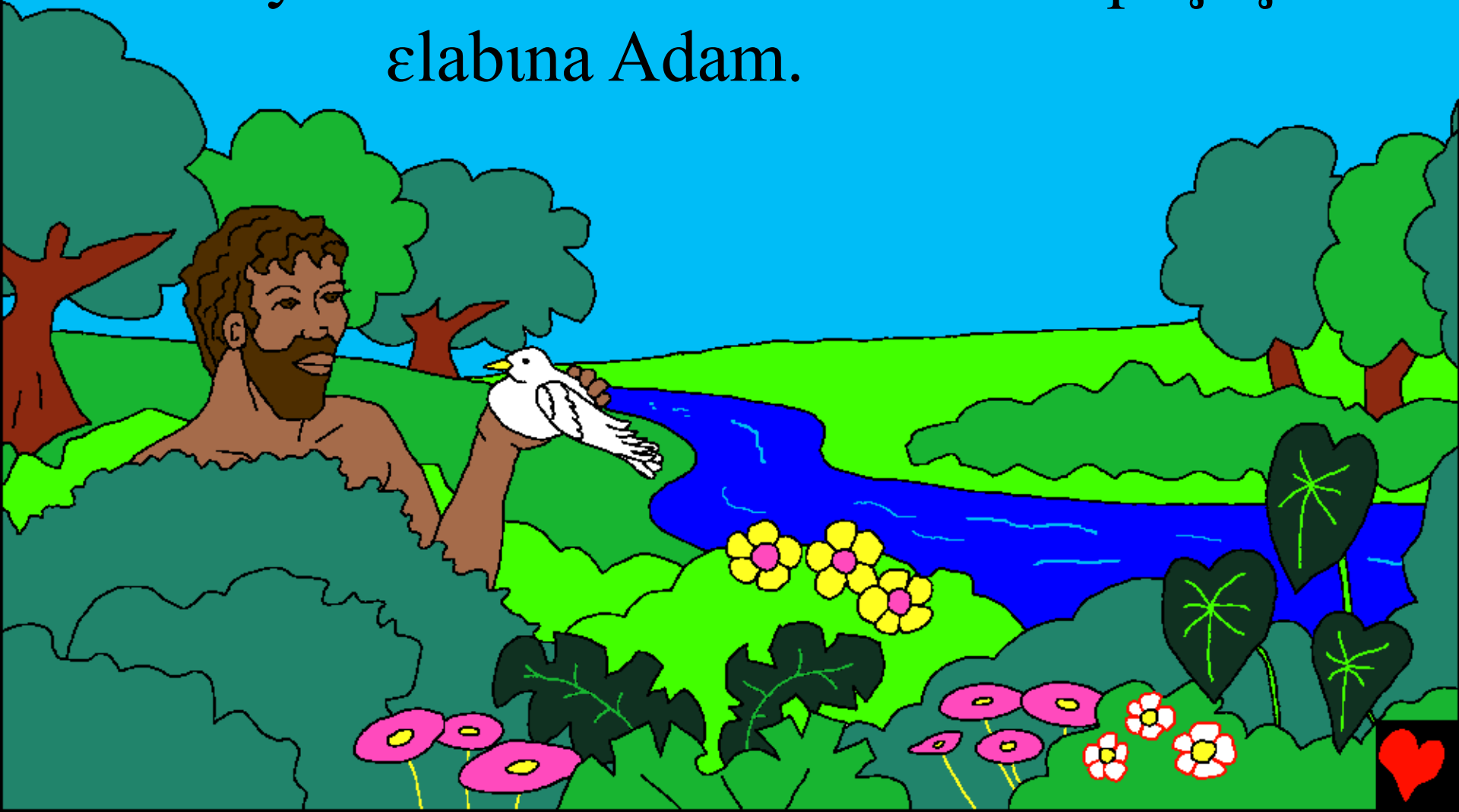
Weyi elabɔ takayay yɔ: Bible for Children
www.M1914.org

©2021 Bible for Children, Inc.

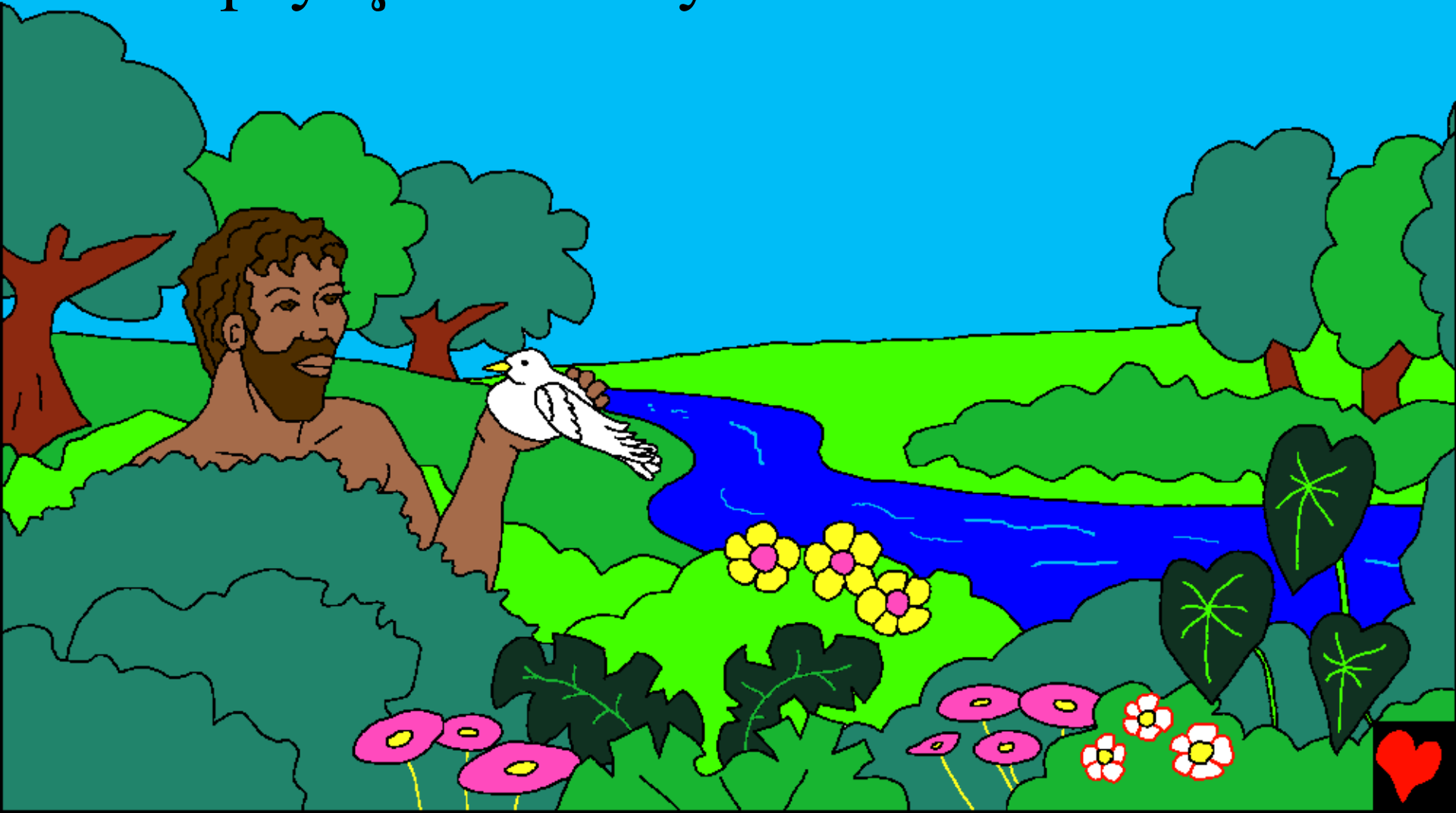
Takayay yɔɔ waɖɛ: ɪwɛnɪ waɖɛ se ɪma tɔm tɔnɛ, yɛɛ ɪpɛdɪy kɛ yɔ.



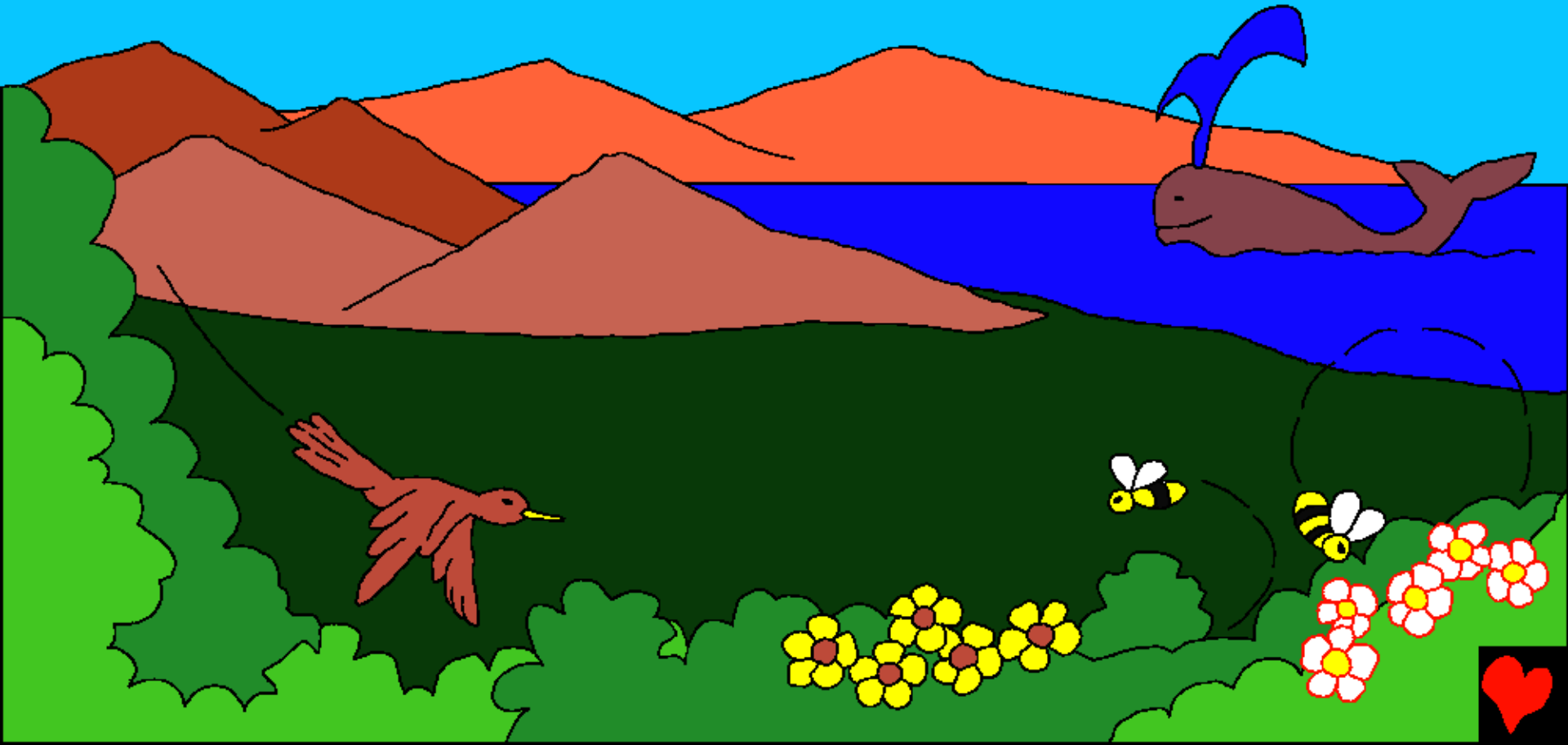
Alabı-ıv? Takayay kiqedeıya, Esı Tom, kedıy-
ıv eyaa dıpaızıe. Pileqaa, Esı labı kajalay eyu
ne eyaa-ı se Adam. Muzuu Esı kpayay ne
elabına Adam.



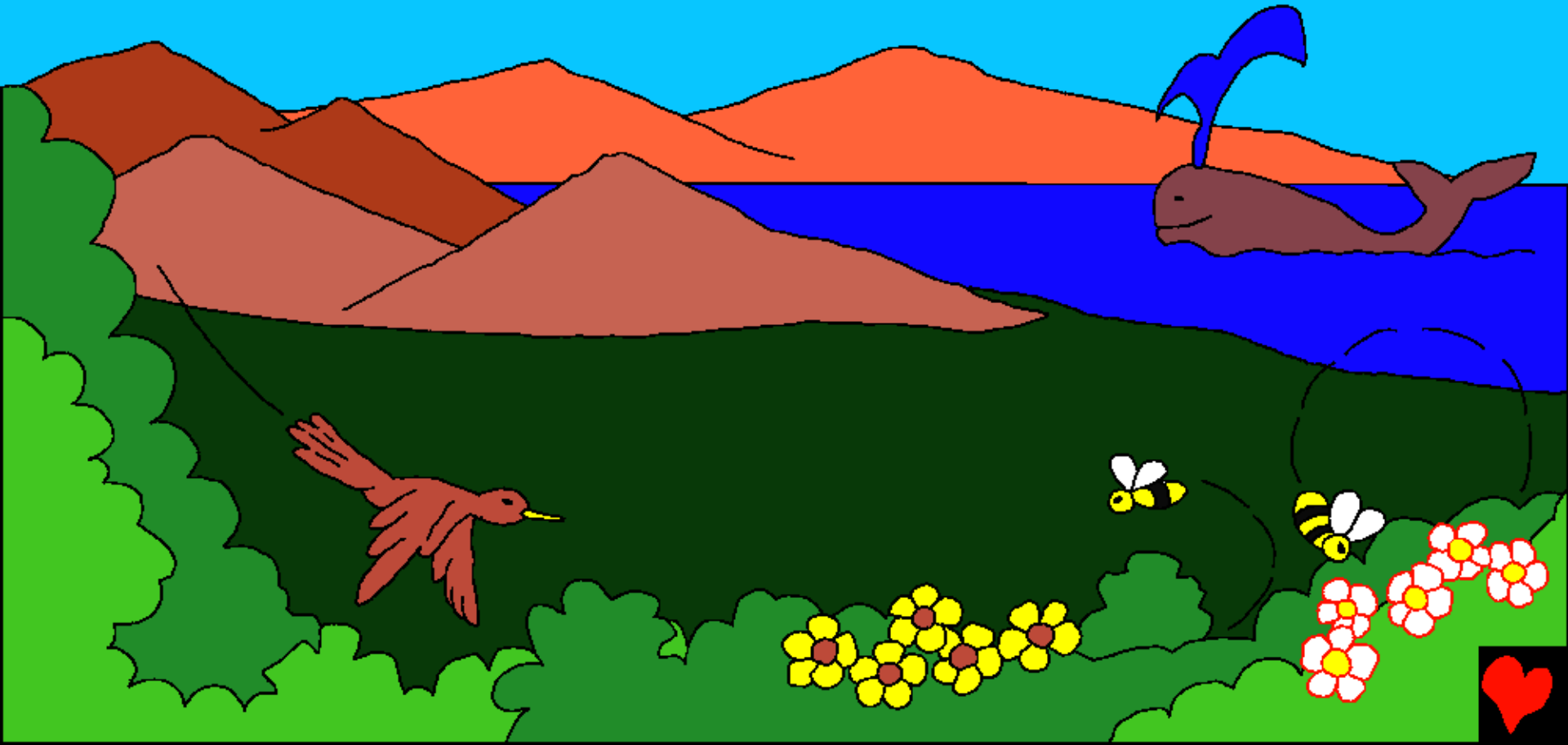
Esɔ fezi Adam mɔɔŋ tɛɛ wezuu fezuu lɛ, episi
wazuu tu. Emayna ɛ-ti kaɗay mamaaci ŋga
payay se Edeni yo ka-taa.



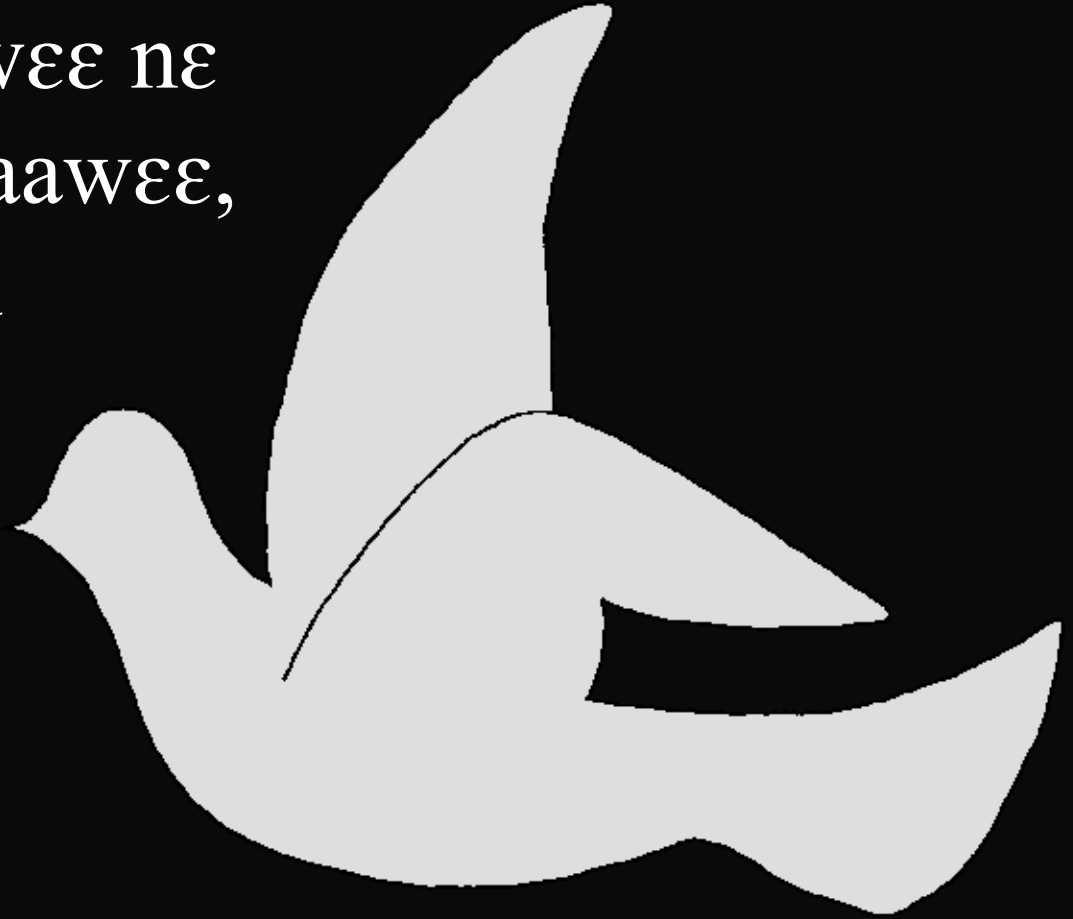
Ρυσο νε Εσο lakı Adam le, elabi ejade kibande
ndı wondu kibandu su dı-taa do yo.



Ɛso la piyisi ne feyɩ, tiɩ heɩ sozuɩ ñindu ne tiɩ
sosoɩ, sumasi hundu kiɩeɩetu ñinzi ne tiɩ
nanɩbaɩyɩya, tenɩu taa kpakpsi sosoɩ ne
koɩolimɩla sotu ñina. Ɛso laba piɩɩa payɩ.



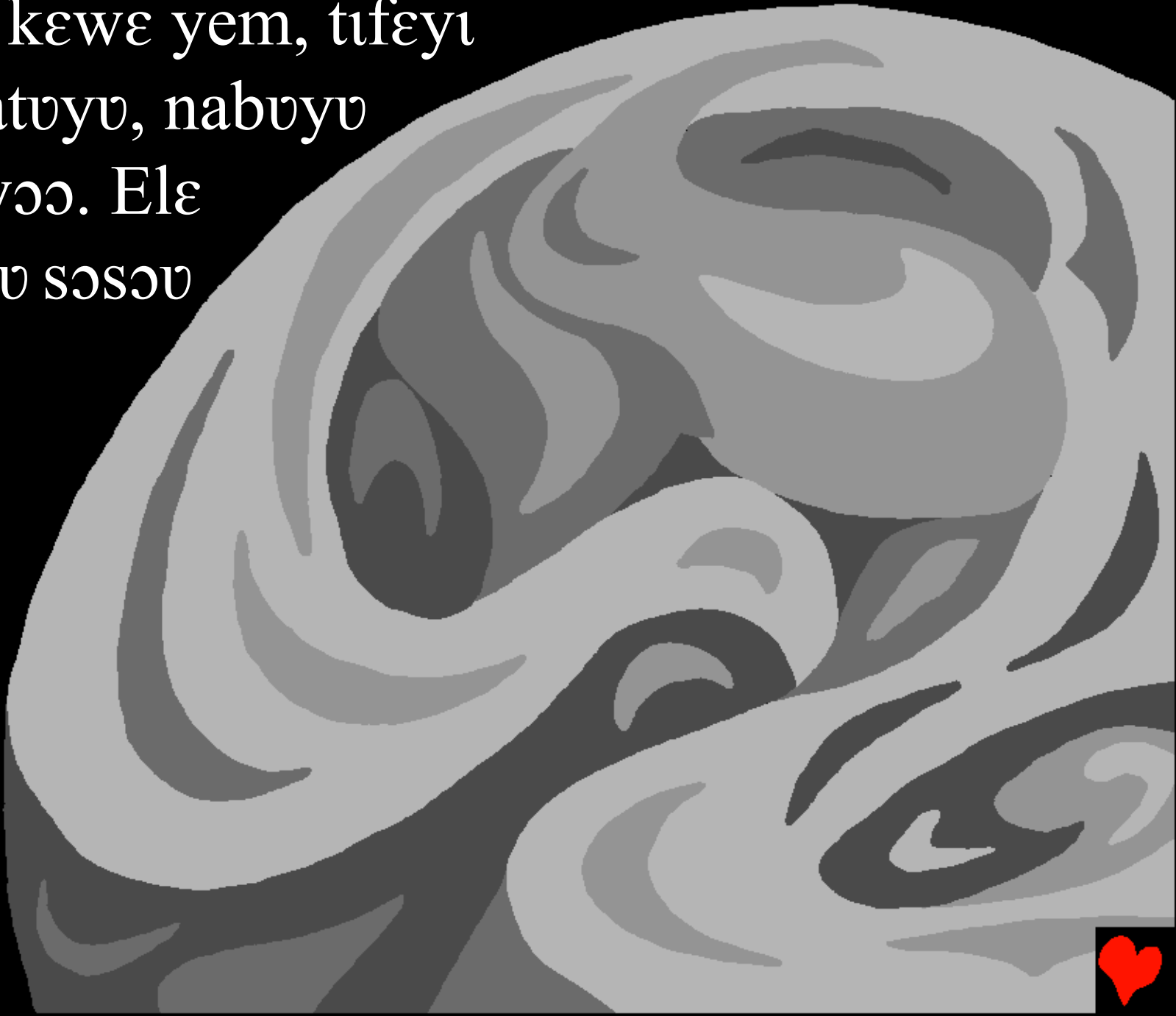
Kide tee le, puco ne Eso pazi
labu le, nabuyu taawee ne
pitasini Eso. Eyaa taawee,
lona taawee, wonda
taawee. Mintusu
ne cikpendu
pataawee. Esoda
ne hade pataawee.
Dege ne cee
pataawee. Eso weyi efeyi ne
qipaziye yo edeke ewena.
Ne Eso la E-tumiye!



Διπάζιγε τaa λe, Eσo labı
εσoδaa nε tataa.



Ne tetu kewε yem, tifeyi
wetu natuyu, nabuyu
feyi ti-yoo. Ele
lɨngamuu sɔsɔu
nakuyu
keweni
yem
lemm.



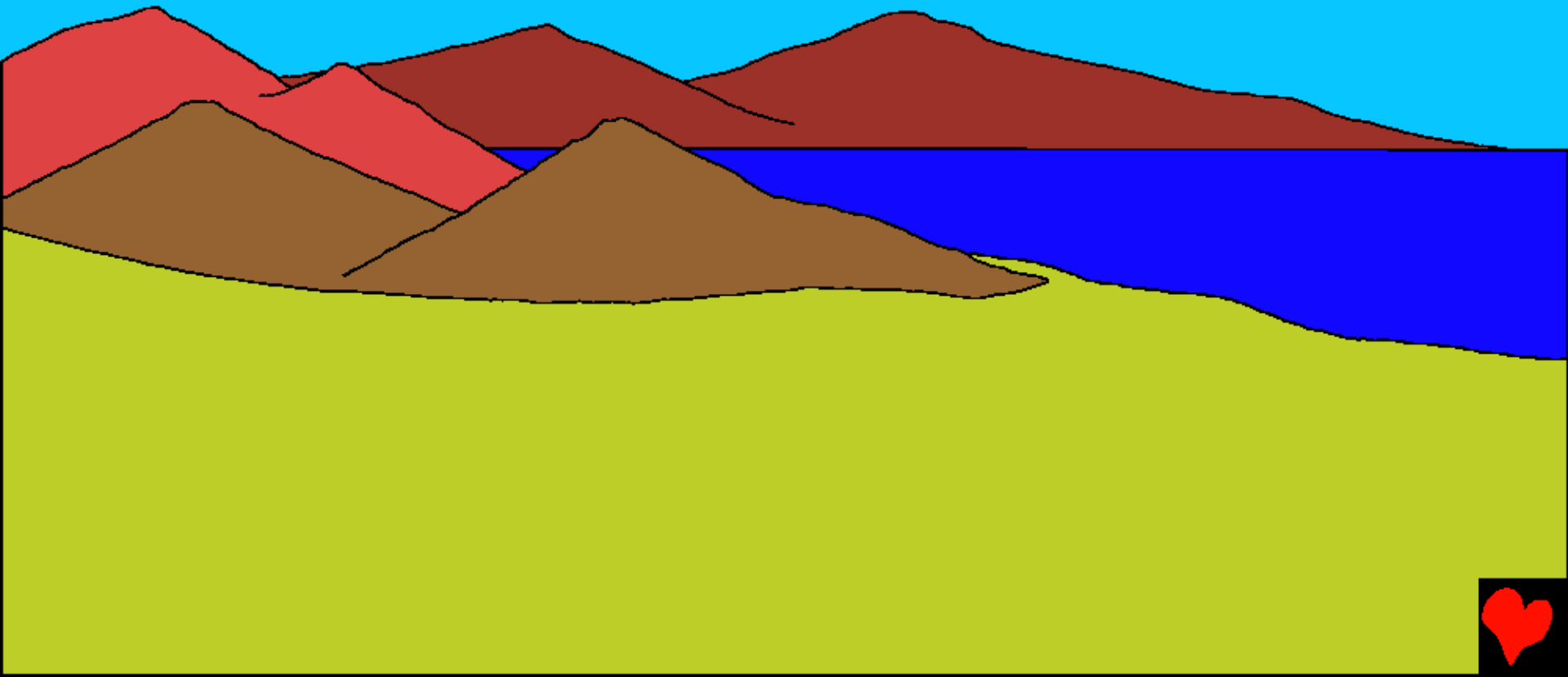
Cikpenduṣṣ koyuu ku-yoo
kremm. Peeye Eṣo
yoodaa se:
"Ñalimye
eñandi".



Ne dıdı ñañandı dɔdɔ. Eso yaa ñalimiye se
wıɟıdaa ne cikpenduɟ se dɔódaa. Doó yu ne
teu fe: Kiyaku kajalay ñıngv le.



Kiyaku naale ñungu wiye le Eso ñoozi tengu lum
ne lum ndi ndi mbu piwe esotonu ne ki-hade kin
yo. Kiyaku tozo ñungu wiye, Eso to se: "Tetu
wayway ñindu ɩu". Ne pɩla mbu.



Esó ha nõo dõdõ ne ñintu, tin hetu, cokõõ ne tin
poñõ. Ne pila mbu. Ne dõõ yu ne
teu fe ne pike
kyaku tozo ñingv.



Pısay ne Eso la wıstı ne fenay ne
tıηzı sakıye nzi nɔɔyu ebızuu
ekalı yoo. Ne doó yu ne teu
fe ne pıke kyaku naza ñıηgu.



Tete kpina ndi ndi wena
awey lim taa yoo ne sumasi
patalnaa yo. Kiyaku
kagbaanzi ñingu wiye
Eso labi kpakpasi sososi
ne cikpesi, sumasi sososi
ne cikpesi. Eso labi
kpakpasi ndi ndi ne susu
ne lim ne sumasi ndi ndi se
siwee tetu yoo, lim yoo ne
esodaa. Doo' yu ne teu fe ne
pike kyaku kgbaanzi ñingu.



Pɪwayɪ lɛ ɛsɔ tasi yɔɔduu. ɛtɔ se: "Tɛtu elɔlɪ
mbu mbu pɪwɛ wezuu yɔ..." Kpɪna ndɪ ndɪ lu.
Tuŋ ɛ ñkewɛɛ nɛ uñamsuu tɛtu nɛ lim taa kpɪna
ɔɔŋ ñina. Tɪgbayɪŋ nɛ ñɪŋ. Kataanikasɪ nɛ
namɪŋ. Kpɪna tɪŋa payɪ ɛsɔ labɪ kɪyakɔ ŋɔ.

Ɖoo' yu nɛ tɛu fe nɛ pɪkɛ kyaku loɔɔ ñɪŋɔ.



Kiyaku loḍo ñiṅgu wiye le, Eṣo laba nabuyu
kifam. Ejaḍe ñoozaa ne ḍiḍaṅi eyu. Toonay
kewe fasti taa ne kpina se pisina-i. Ne Eṣo to se:

"Dila eyu ne ewee si ḍiweu
yo. Ekena mbu pitija payi

piwe tetu yoḍo yo

pi-kibaylu." EṢO LA

EYU SI EWEU YO,

ELABI EYU SI

EMAYMAY

YO ...



Esó yoodina Adam.
"Tóó mbu ñi-liu wε
kaḡay taa yó. Eε
taatóó tin ḡu kiyeki
se eyu etili mbu piwε
ḡeu nε mbu pifeyi
ḡeu yó. puwiye ndi
ḡtoki-ku yó ḡsiki".



Ne Eso to se: "Pifeyi deu se eyu ewee edeke.
Malaki-i siniyu nooyu." Eso kona Adam esndaa
sumasi ne kpina tiya. Adam yaa
patiya hila. Pwiliy se ewee lon
siya. Ele sumasi ne kpina ana
pa-taa le Adam tana egbaadu
weyi ele piziy esini-i yo.



Esò yeba ne òm nabuyù kpa Adam ne edòo
ezi esiba yò. Ne elizi e-sinay leeke ne elabini
halu. Halu weyi Esò
laba yò, ewe camye ne
eke Adam egbaadu.



Esɔ labɪ pɪtɪŋa payɪ kɪyakɪŋ loɔɔ.
Pɪsaya nɛ Esɔ wazɪ kɪ yakɪ lɔbɛ
ŋɪŋgu nɛ elabɪ-kɪ kɪyakɪ kɪhezɪɪ.



Edeeni kaqay taa le, Adam ne e-halu
Eva paawe heziye taa toovenim aliwaatu
ndu pañañay Eso yo. Eso eeke pa-
Kipaylu, po-yoo coniyu ne pa-taabalu.



Alıwaatu ndu Eso labı pıdıña yó

Tóm ndu tilına Eso jolo yó, Takayay
kideqeya

Panay tu

Đıpazıye 1-2

"Ñó-Tóm qusıye hay ñalımye."

Keya 119:130



Tinaa



Esotom tune tiwilsu-qu pilina ezima mbu
de-te maamaaci eso weyi ema-qu ne esolu se
ntilu yo.

Kibaylu sima se qilaba mbu rifeyi deu yo, eyaa bu
se kiweekim. Ele ezima mbu kibaylu soolan
pifeyi le etiyina e-piyalu egbamye, Yesu, ne
ekoo esi kaaman kay yo ke
ña-kiweekim yo ele Yesu fe ne ekpa esotaa
koboyay taa! Yee nweni lidau yesu yo ne nrozi-
se ekpey-n ña-kiweekim yo, ekayse ela! E-kay se
e-ko ño-colo ne ña ne-i le ewe wezuu tam yo.



Yee ηtisuu se pike toovenim yo, heyi tune kibaylu:

Yesu metisaa se ña le eso ηpisi eyu ne ηsi ma-
kiweekimyo, ele ηdaani weu wezuu. Metediη-η
se, η-koo me-wezuu cau taa ne η-kpeγ-m ma-
kiweekim, ne ma-pizi meweeni wezuu cau kifalu
lelele yo, ne kiyaku nakuyu wiye le ma-pizi me-
wee ño-ccolo taa. Sinam ne ma-ña ne mancay
wezuu ezi ña-piya yo. Pila mbu

Ekali esotom takayay ne e-yoodu ne eso paadoye!

Yohaneesi 3:16

