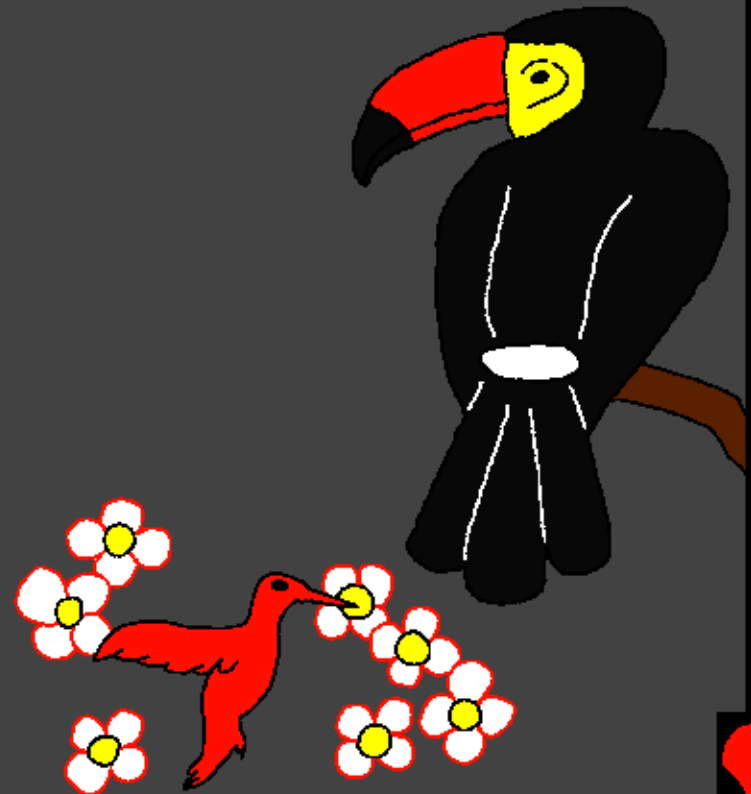
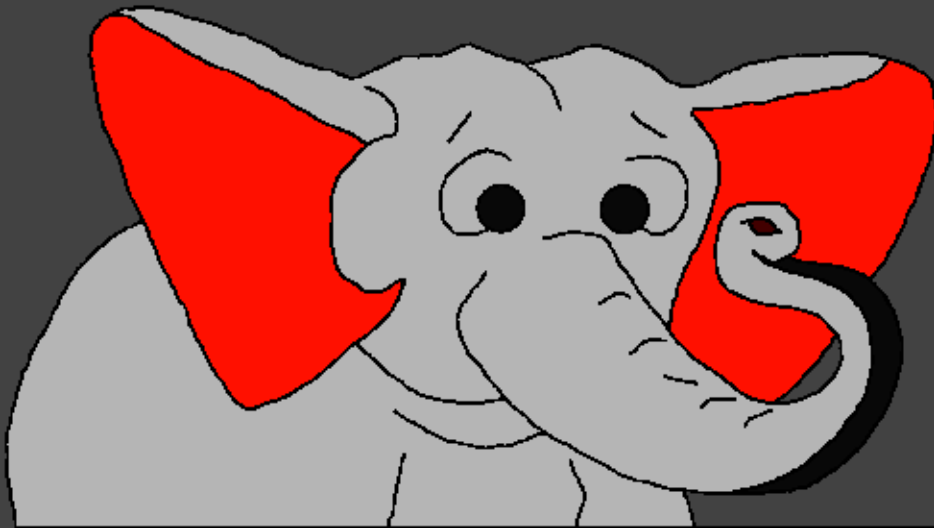


Baibulo la Ana
mphatso

Mulungu Akapanga
Zonse



Yolembedwa ndi: Edward Hughes

Yofotokozedwa ndi: Byron Unger; Lazarus
Alastair Paterson

Kusinthidwa ndi: Bob Davies; Tammy S.

Otanthauzidwa ndi: christian-translation.com

Zapangidwa ndi: Bible for Children
www.M1914.org

©2021 Bible for Children, Inc.

Chilolezo: Muli ndi ufulu wokopera kapena kusindikiza nkhanayi,
bola ngati simugulitsa.



Ndani anatipanga? Baibulo, Mawu a Mulungu,
limafotokoza momwe mtundu wa anthu unayambira.
Kalekale, Mulungu analenga munthu woyamba
kum'patsa dzina loti Adamu. Mulungu adalenga
Adamu ndi dothi lapansi. Mulungu atapumira
mwa Adamu, adakhala wamoyo.

Anapezeka kuti ali
m'munda wokongola
wotchedwa

Edeni.



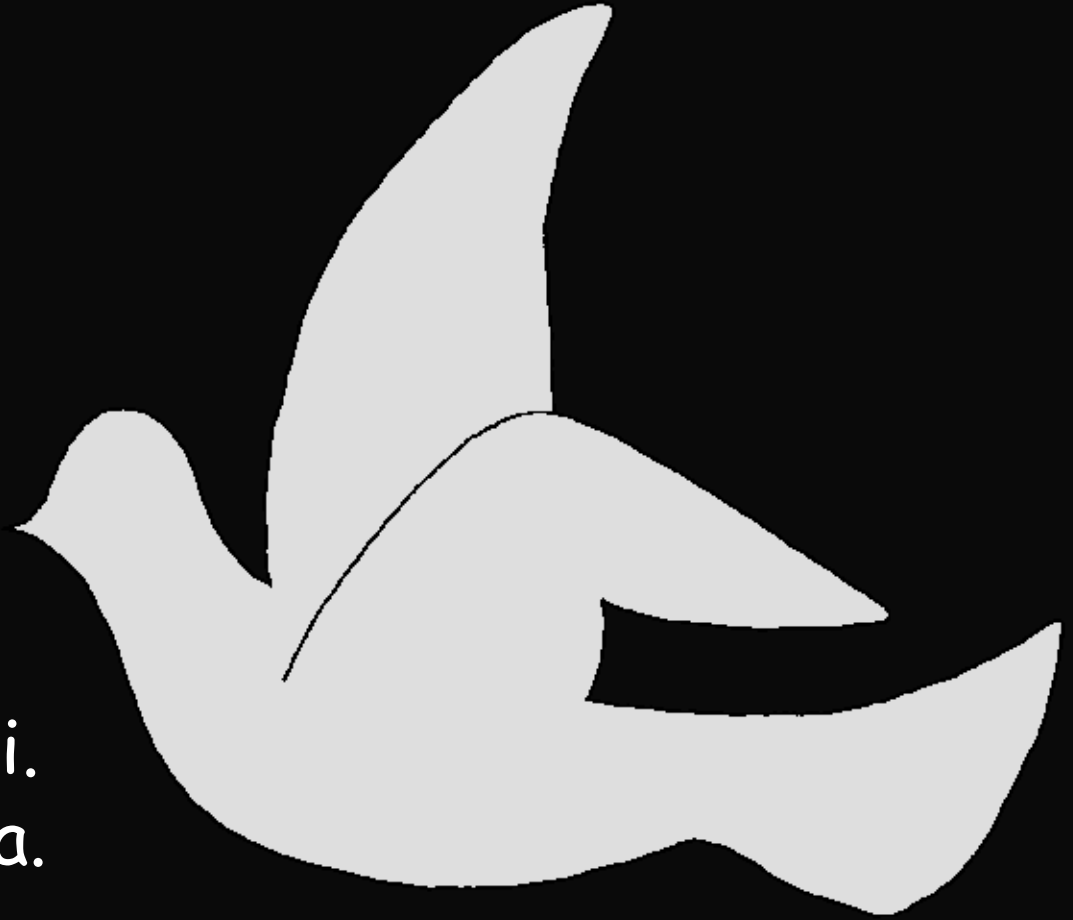
Mulungu asadalenge Adamu, adapanga dziko lokongola lodzala ndi zinthu zodabwitsa. Pang'ono ndi pang'ono Mulungu adapanga malo a mapiri ndi madera akumapiri, maluwa onunkhira ndi mitengo yayitali, mbalame zamapiko owala bwino ndi njuchi zolira, maondo akugubuduza ndi nkhono zoterera.

M'malo

mwake, Mulungu adapanga chilichonse chomwe chiripo - chilichonse.



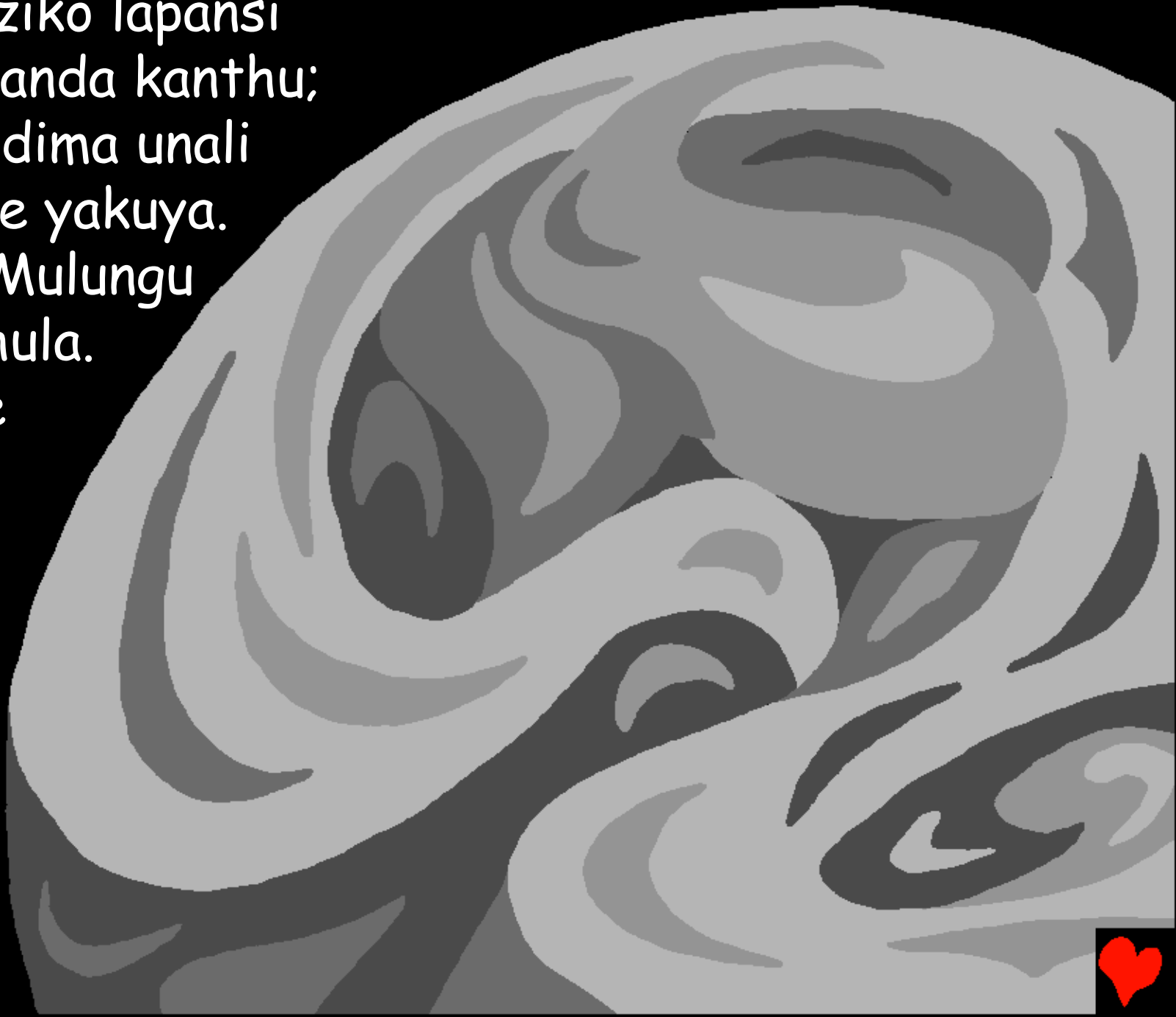
Pachiyambi pomwe,
Mulungu asadapange
chilichonse, kunalibe
china koma Mulungu.
Palibe anthu kapena
malo kapena zinthu.
Palibe. Palibe
kuwala kapena
mdima. Palibe
mmwamba komanso ayi.
Ayi dzulo kapena mawa.
Panali Mulungu yekha
Yemwe analibe chiyambi.
Kenako Mulungu
anachitapo kanthu!



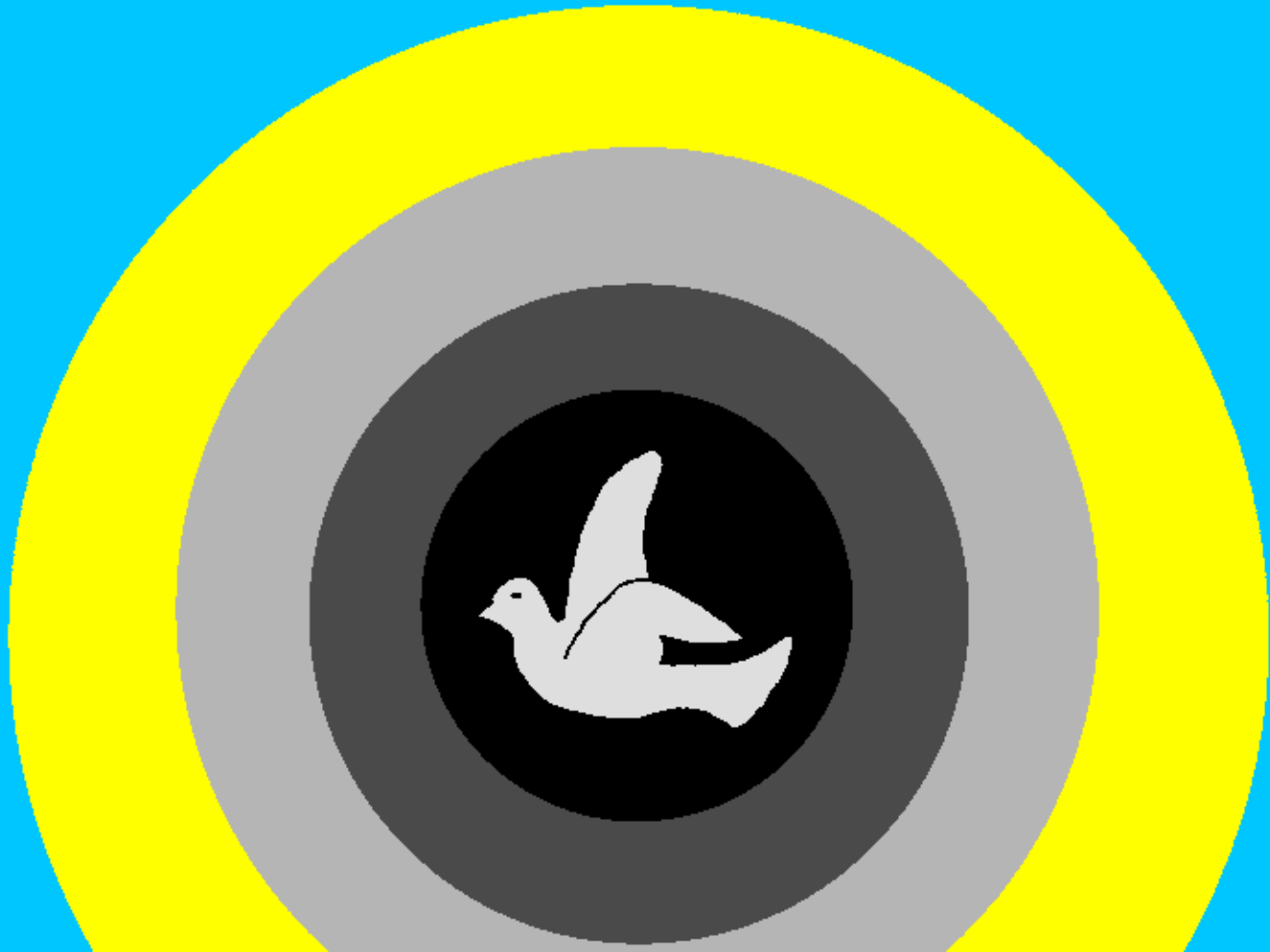
Pachiyambi, Mulungu adalenga kumwamba
ndi dziko lapansi.



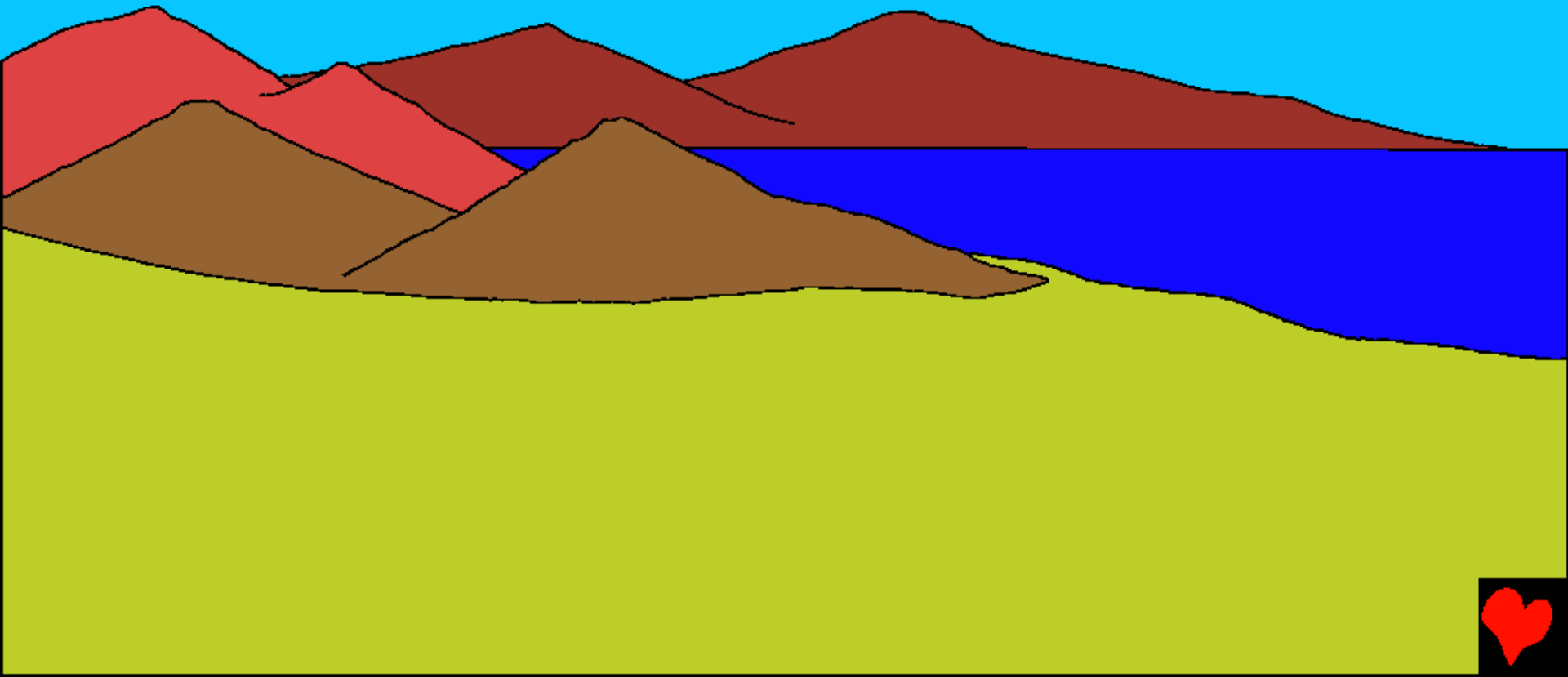
Ndipo dziko lapansi
linali lopanda kanthu;
Ndipo mdima unali
pankhope yakuya.
Kenako Mulungu
analankhula.
"Pakhale
kuwala."



Ndipo kunayera. Mulungu anatcha kuwalako Usana
ndipo mdimawo anautcha Usiku. Ndipo panali
madzulo ndipo panali m'maŵa, tsiku loyamba.



Pa tsiku lachiwiri, Mulungu adasanja madzi
am'nyanja, nyanja ndi nyanja pansi pa thambo.
Patsiku lachitatu, Mulungu adati, "Lolani nthaka
yowuma iwoneke." Ndipo zinachitikadi.



Mulungu analamulanso udzu ndi maluwa ndi
zitsamba ndi mitengo kuti ziwonekere.

Ndipo adawonekera. Ndipo panali
madzulo ndipo panali
m'maŵa, tsiku
lachitatu.



Kenako Mulungu anapanga dzuwa,
mwezi, ndi nyenyezi zochuluka
kwambiri kwakuti palibe amene
angathe kuziwerenga. Ndipo
panali madzulo ndipo panali
m'maŵa, tsiku lachinayi.



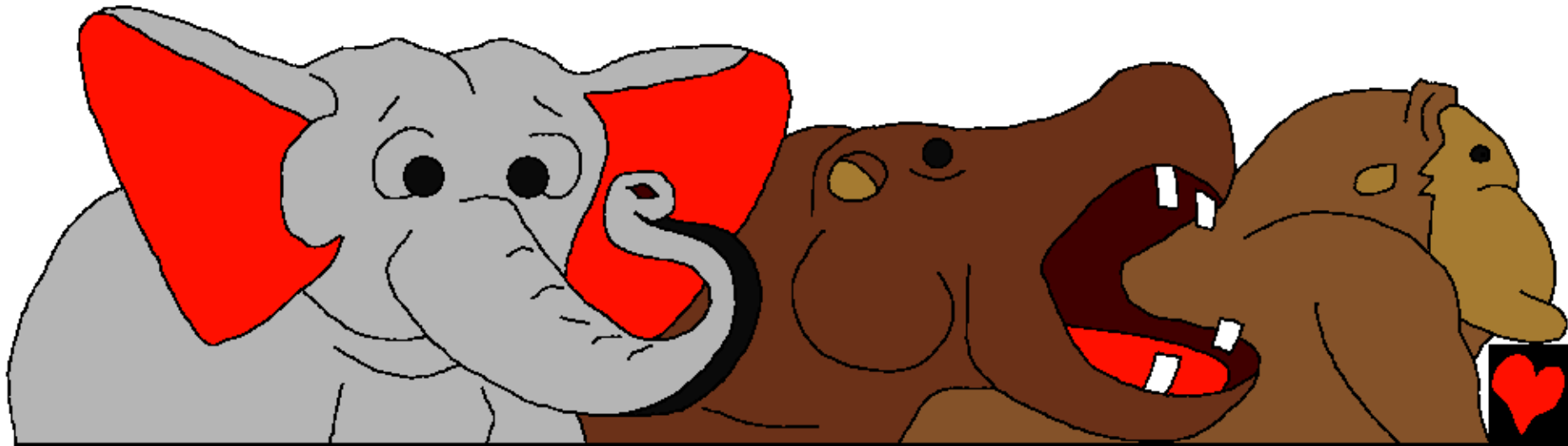
Zamoyo zam'nyanja ndi nsomba ndi mbalame zinali mndandanda wotsatira wa Mulungu. Pa tsiku lachisanu Anapanga nsomba zazikuluzikulu ndi timisodzi ting'onoting'ono, nthiwatiwa zamiyendo yayitali komanso mbalame zazing'ono zosangalatsa. Mulungu adalenga nsomba zamitundumitundu ndikudzaza madzi apadziko lapansi ndi mbalame zamitundumitundu kuti zisangalale ndi nyanja ndi nyanja. Ndipo panali madzulo ndipo panali m'maŵa, tsiku lachisanu.



Pambuyo pake, Mulungu analankhulanso. Adati, "Dziko lapansi libale zamoyo." Mtundu uliwonse wa nyama ndi tizilombo ndi zokwawa zinakhalapo. Kunali njovu zomwe zimagwedeza dziko lapansi komanso ma beavers otanganidwa. Anyani olusa komanso ng'ona zosokonekera. Wiggly nyongolotsi ndi cheeky chipmunks. Zigawenga za zigawenga ndikutsuka pussycats. Tsiku lililonse nyama zonse zidapangidwa ndi Mulungu.



Ndipo panali madzulo ndipo panali
m'maŵa, tsiku lachisanu ndi chimodzi.



Mulungu adachitanso china patsiku lachisanu ndi chimodzi - chinthu chapadera kwambiri. Chilichonse chinali tsopano chokonzekera Munthu. Panali chakudya kumunda ndi nyama zoti zimutumikire.

Ndipo Mulungu anati, "Tipange munthu m'chifanizo chathu.

Iye akhale mbuye wa zonse padziko lapansi."

CHONCHO MULUNGU

ANALENGA Muntu

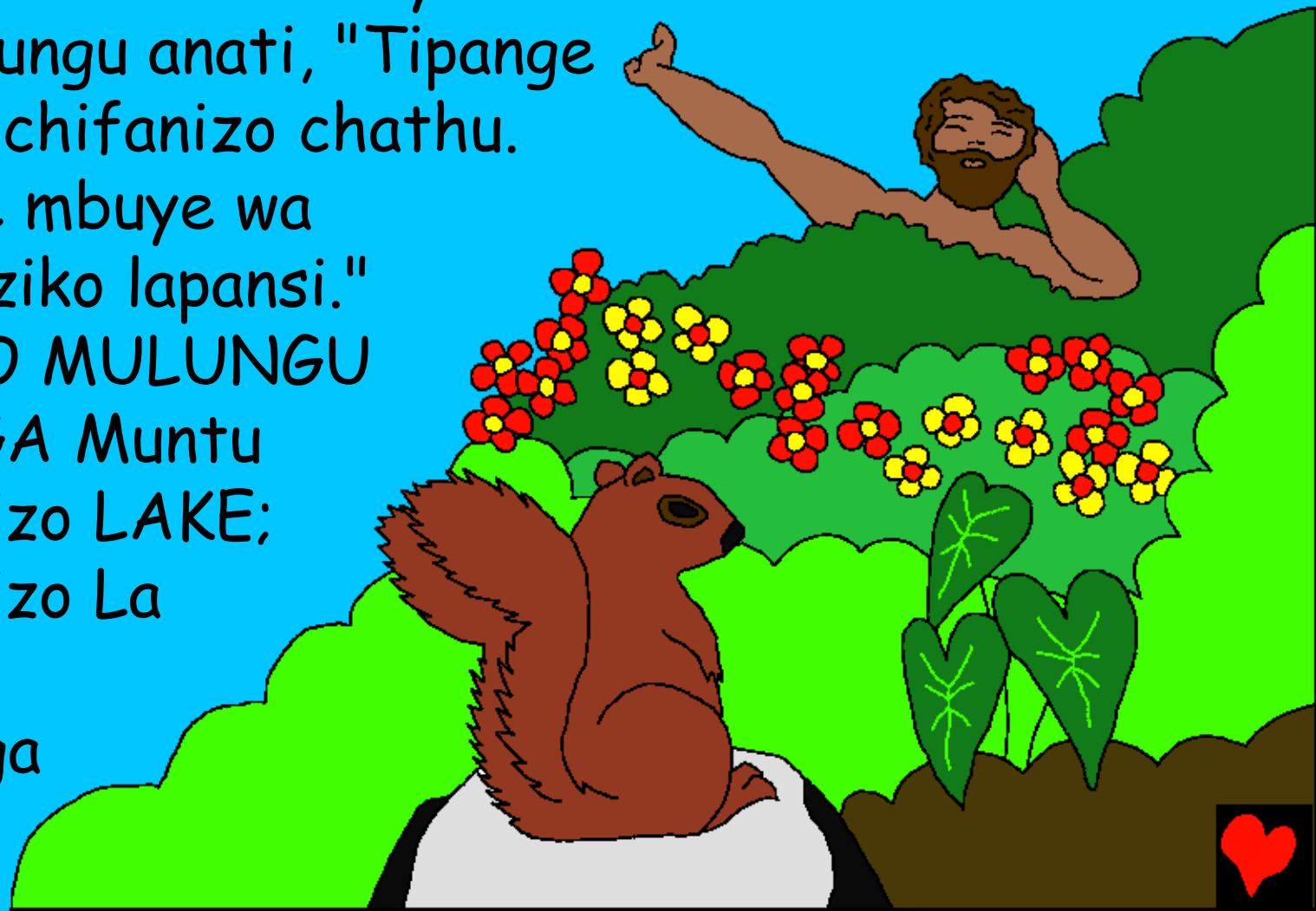
MWA Fanizo LAKE;

MWA Fanizo La

Mulungu

Anamulenga

...



Mulungu analankhula
ndi Adamu. "Idya
zomwe ukufuna
m'munda. Koma
usadye zipatso za
mtengo wodziwitsa
chabwino ndi choipa.
Ngati ungadye za
mtengowo udzafa
ndithu."



Ndipo AMBUYE Mulungu anati, "Sikwabwino kuti munthu akhale yekha. Ndidzampangira womuthandiza." Mulungu adabweresa Adamu mbalame na pinyama pyonsene. Adam adawatcha onse. Ayenera kuti anali wanzero kwambiri pochita izi. Koma pakati pa mbalame zonse ndi nyama zonse panalibe mnzake woyenera Adamu.



Mulungu anagonetsa tulo tofa nato. Kuchotsa nthiti imodzi ya munthu wogona, Mulungu anapanga Mkazi kuchokera ku nthiti ya Adamu. Mkazi amene Mulungu adapanga anali woyenera chimodzimidzi kukhala mnzake wa Adamu.



Mulungu adapanga chilichonse m'masiku asanu ndi limodzi. Kenako Mulungu anadalitsa tsiku lachisanu ndi chiwiri n kulipanga kukhala tsiku lopuma. M'munda wa Edeni, Adamu ndi Hava mkazi wake anali ndi chimwemwe changwiro pomvera Mulungu. Mulungu anali Mbuye wawo, wowapatsa ndi mnzake.



Mulungu Akapanga Zonse

Nkhani yochokera m' Mawu a Mulungu, Baibulo,

amapezeka mu

Genesis 1-2

"Kulowetsa m' mawu anu kunapereka kuunika."

Masalmo 119:130



Kumapeto



O musoso wa mabuku akolo yu u tutangela bhukaxi kya Nzambi yetu ya fuma watubhange yu wandala eye u mwijiya.

Nzambi wakijiya okwila etu twabhange ima yaibha mwene ixana ituxi.

O kaxiku ka kituxi o kufwa, mukonda Nzambi wa kuzolo kyavulu, watumikisa mone umoxi, Jesu, o kufwila ku dikulusu yu a mutalesa o kaxiku mukonda dya ituxi ye. Mu kiki, Jesu wa fukunuka, yu wayi konzo ku dyulu. Se eye udyelela kwa Jesu ni um' bingi phala kuloloka o ituxi ye, mwene wanda kukibhanga. Mwene wanda kwiza natungu momwe kidawla, eye phe wanda tunga Ne kandu kiakalelaku.

Se eye udyelela o kwila kiki kyene o kidi, Tangela Nzambi o kwila: Ngana Jesu, eme nga kijiya o kwila eye mwene u Nzambi, eye wa dikitulula u muthu phala kufwila mu ituxi yami, eye dingi weze kumwenhu. Nga kudyondo. Za ku mwenhu wami phala u ngiloloke o ituxi yami, phala ni ngikala ni mwenhu wobhe kindawla kiki, kizuwa ni nga kakala n' Eye kandu kiakalelaku. Ngi kwatekese phala ku Kuxila ni ngi tungu kala ngi mon' E. Amem.

Tanga o Mikanda Ikola ni uzwela ni Nzambi
o izuwa yoso! Zuwa 3:16

