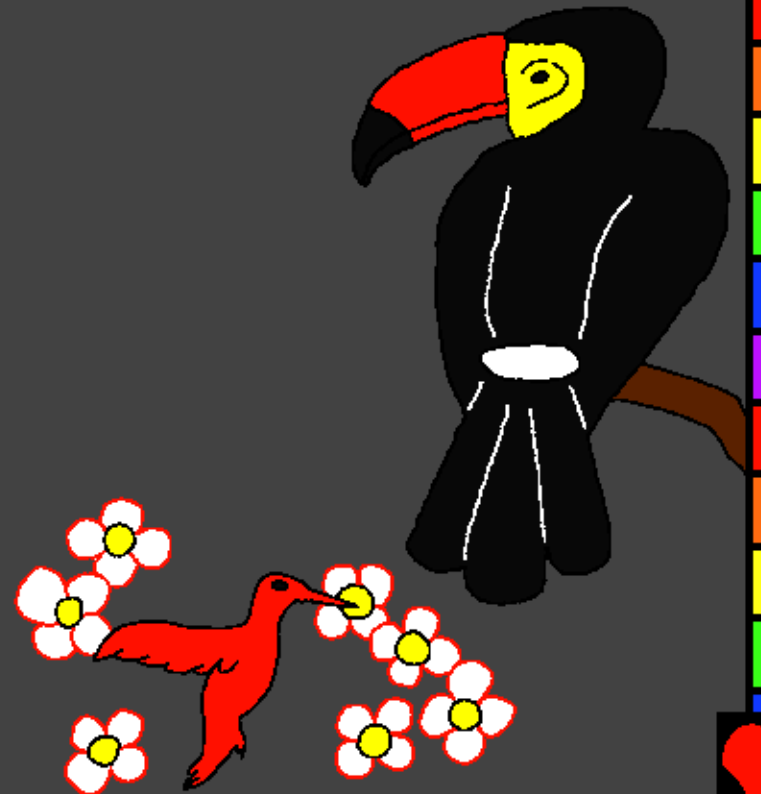
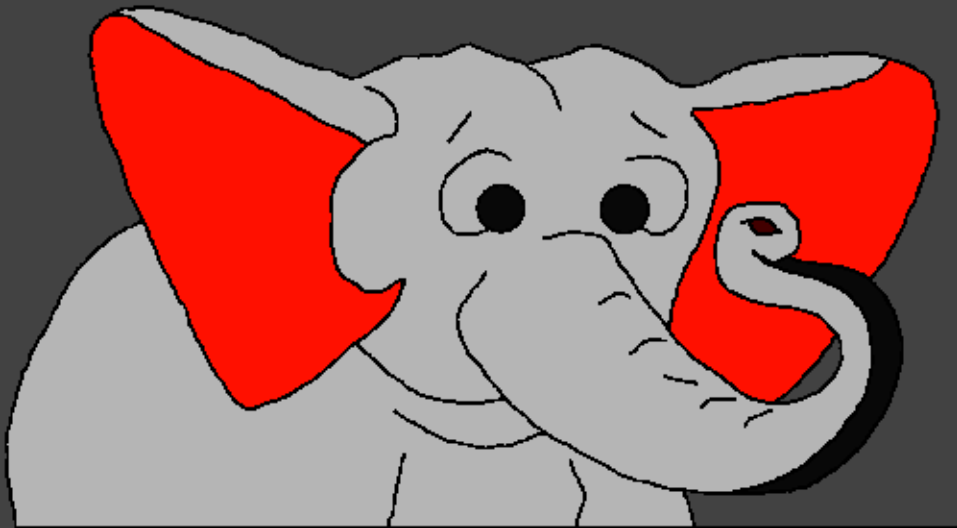


Mukanda wa bana ba efile
Buedi

Pafine efile mukulu
mui bikite



bifunde kui: Edward Hughes

bilumbulule kui: Byron Unger; Lazarus
Alastair Paterson

bikite kui: Bob Davies; Tammy S.

bialule kui: www.christian-translation.com

bitushe kui: Bible for Children
www.M1914.org

©2021 Bible for Children, Inc.

Licence; wena makokeja akuata ata ku fuatula mianda
yakala yi, kushi kui yipana nyaa.



Nani mui tufuke? Mukanda wa efile, eyi dia efile etulungule bikunyi bifine muntu a pa senga mu bange. Kutadi kipulo, efile fine mutufuke muntu a kumpala muntu a Mupa adama.



Efile mukulu mufuke adama ku lufuvi lua
pa. Nsenga. Pafine efile mukulu badi
muele muwa kui adama, afika na muwa.

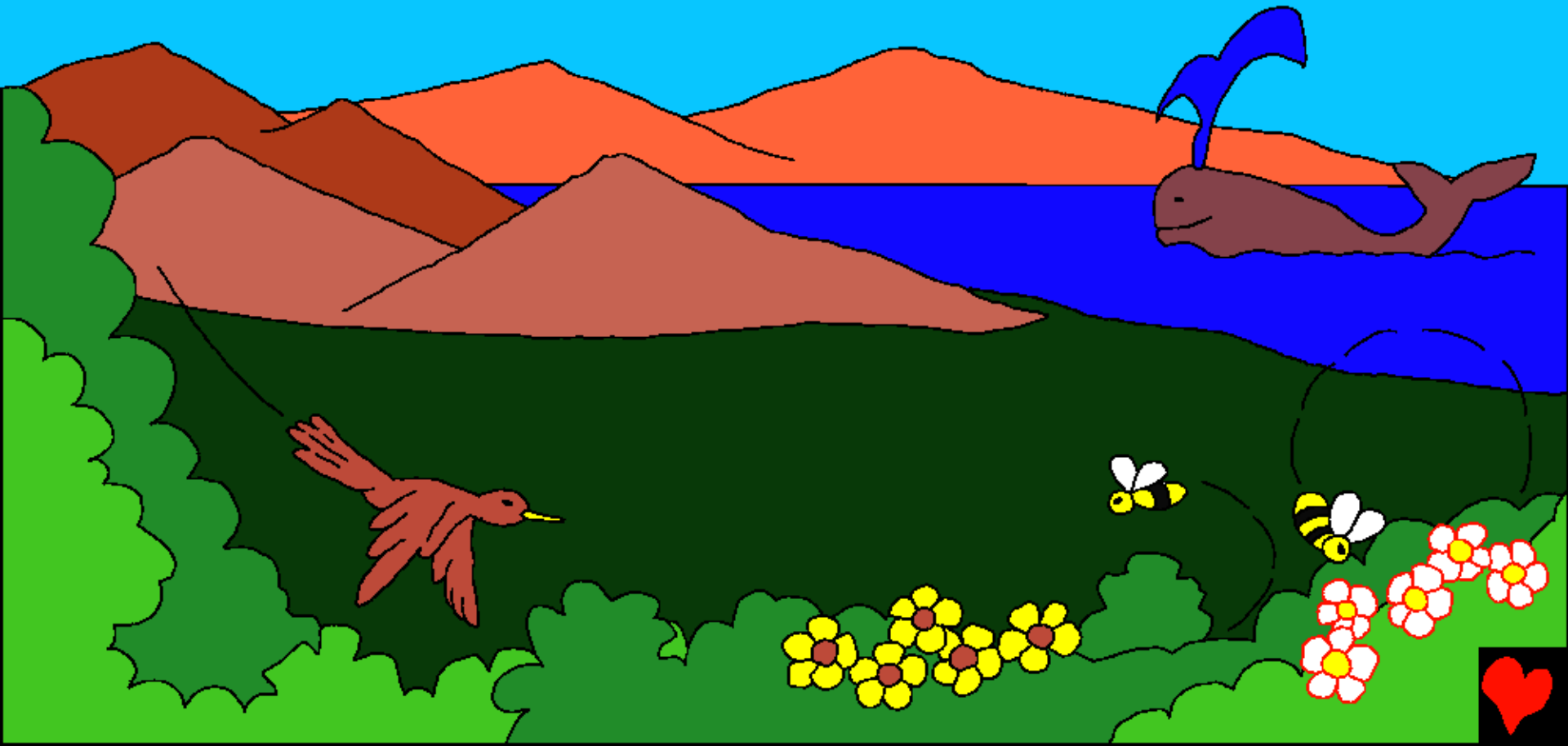
Abo kusangidibua mu kikola kibuwa
kifine ejina
eshi Eden.



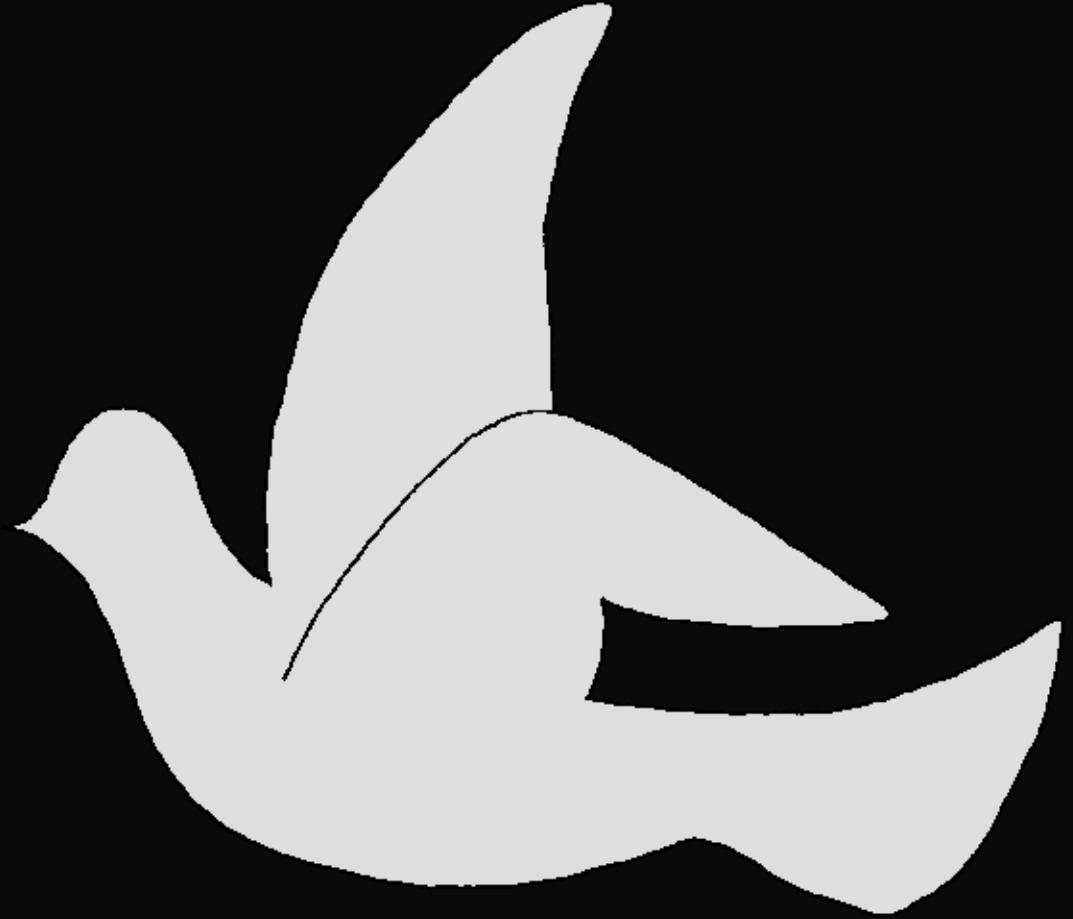
Kumapala kui muanana kuasha fukile
adama, fine kueta kufuka nsenga ijima
ibuwa na iyule bintu biselele. Ku mukolo
ku mukolo, muanana kueta bashiku na ku
miki yikata, ...



... na tonyi na masala ayingayinga na nyuki
yi nyunganyunga, mishipa yikata kuenda
na nkolokolo kufinunuka, ku kukita,
muanana mukite bioso bikudi.



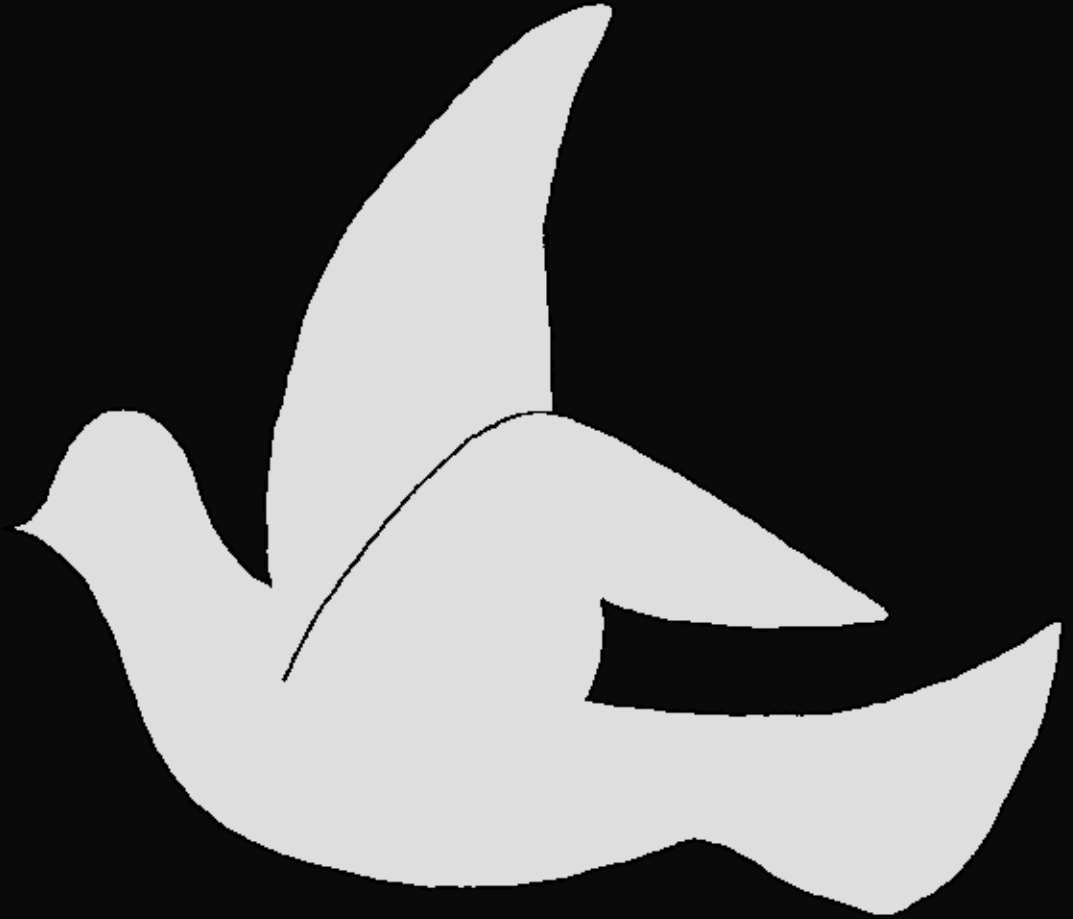
Kumbashilo koso,
kupala kua efile
mukulu akite
bikudi, takufine
kintu anka
efile mukulu.
Ata bantu, ata
muaba, ata bintu.
Bisumanka.



Ata lono likile
buwa ata mufitu.

Ata mu ilu ata
pashi. Ata
maloba ashale
ata maloba
afikanga.

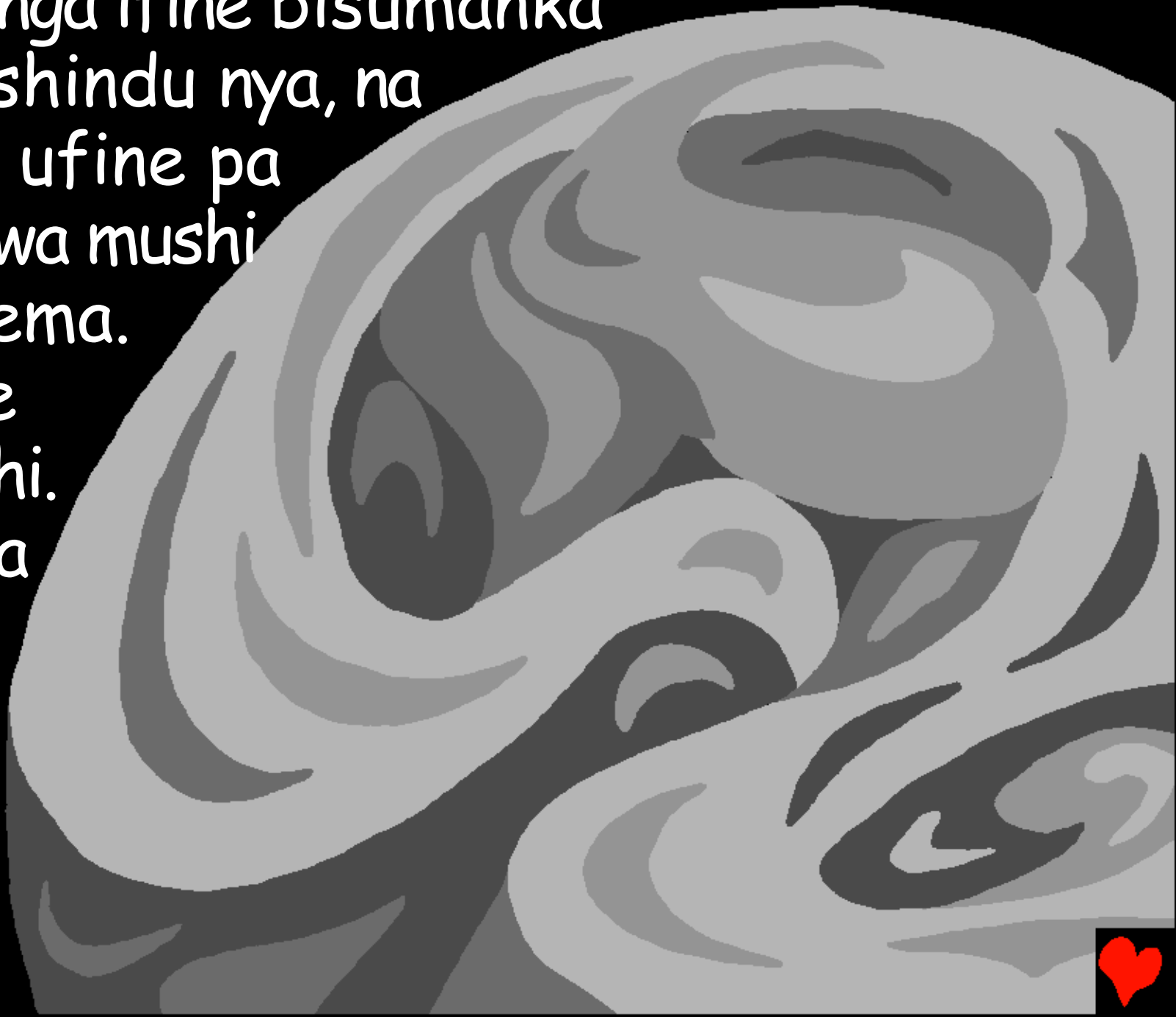
Kubadi anka
efile shibadi
ata bangishilo.
Efile nkualula!



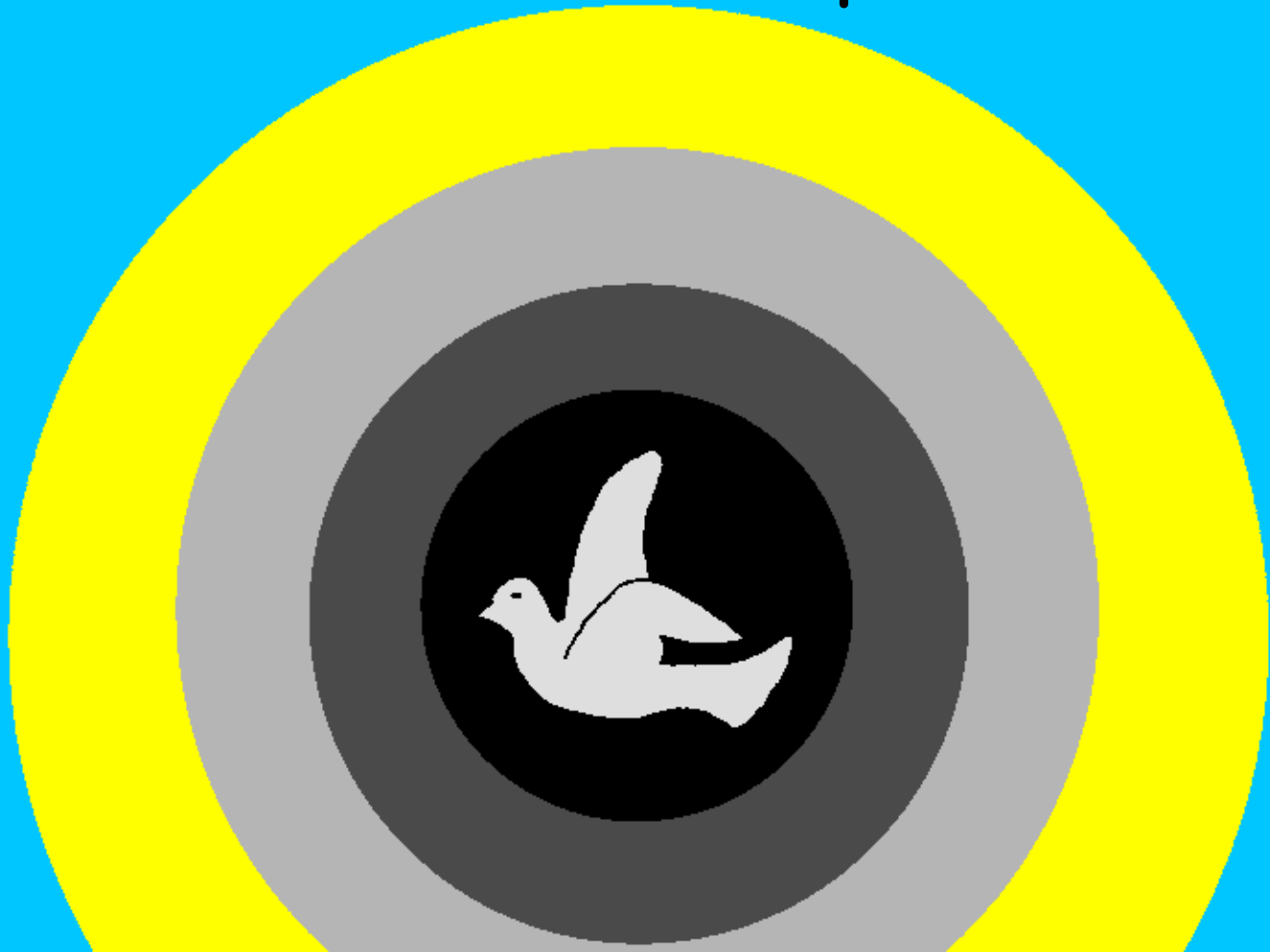
Ku mbangishilo muanana kufuka
eyilu na nsenga.



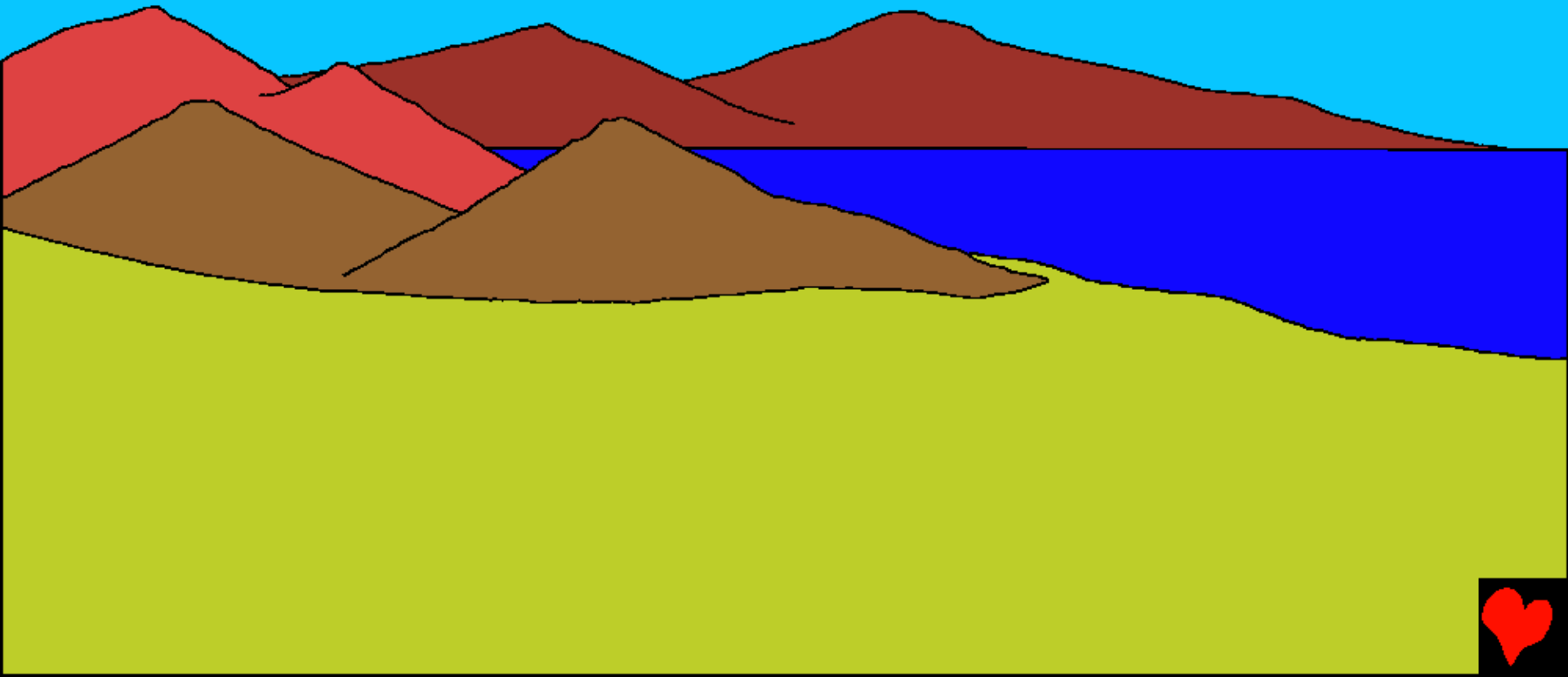
Na nsenga ifine bisumanka
ata mushindu nya, na
mufitu ufine pa
muaba wa mushi
mua mema.
E iefile
kuabeshi.
N'eteta
ikale
eku.



Kufine n'etata. Efile mukulu kuitamina
efuku na mifitu, a kuitamine mifitu
mbufuku. Na kiolo na nyenka efine
efuku dia kumpale.



Efuku dia kabidi, muanana kulumbulula
mema a majiba akata, mbula ikata na
misulu mushi mua eyilu. Efuku dia
kasatu, efile kuamba: "Bua nsenga
iputena ikanguke." Abiu kufika.



Efile kutuma kutuka kua bisosua, bilongo,
miki yikata. Abio kutuka.

E nyenka na kiolua
bifine dia mafuku
akasatu.



Binubinu efile kufuka ngamba, na
mueji, na mitoto kuishi muntu
a kubala nya. E kiolua na
nyenka bifine efuku
dia kananka.



Kufikibua kua mema,
bibala na tonyi bifine
pepi na mu mianda ya
efile. Efuku diakatanu,
ekufuka bi mabale
bikata na tu mishipa
tupela, na tonyi eshina
bui austriches tua
mikolo ibula, na tonyi
tua milomo ipela tua
masanka.



Efile mukulu mufuke
bibale bia mishindu
yonso bua kuyuja
mema onso apa nsenga
pajima na nyonyi tua
bishindu tonso bunshi
tuate nsenga, na mema
e na eyilu. Kiola na
nyenka bifine efuku
dia kasatu.



Kumpala kua abiu, efile kuakula munda wupia. Kuakula eshi: "Eshi nsenga itushe bifukilo bia moyo..." nyama yonso ya mishindu, tuishi tonso na nyema yonso ikakanga ayo kumona efuku. Kubadi ndiefu badi kueta ku kukumuja Nsenga na nyema ya castor.



Sonko na lonji na ngandu ishibadi na miaba ya kushalela. Na misanda na mpuku ya mu mutamba ishifine na moo. Ngolo yikata na mpusu yikaji iyungayunga. Nyema onso efile mukulu badi mu mufuke efuku diadia.

Nyenka kiolua kifine mafuku dia kasambombo.



Efile mukulu kukita kindi kitu efuku dia kasambombo. Kindi kitu kia binebine. Kionso kifine pepi na muntu, kubadi bia kudia mu mudimi na nyema ya kui kuakisha.



Na Efile kuakula: tukite muntu mu
kimononu kiande. Ekane muanana a
mu nsenga ijima. Nabiu biabia bifine
Efile mukulu mufuke
muntu mu kifuanyo kiaye;
mu kifuanyo kia Efile
mukulu bia badi
mu mufuke ...



Efile kulungula
adama. Edia
bionso bioni
muvule mu kikola.
Kadi tudianga
muki wa mianda
yibuwa na yibubi.
Obe mudie kinu
kimuma, ofunga
bia binebine.



E efile mukulu a kashidi kuamba:
tabibuwa bua muntu ekale
emuine nya. Mukikinanga
a ku muabuilisha. Efile
nkufika na tonyi tonso
na nyema ku adama.



Efile mukulu fine muele adama bua tulue
tui kansha, ku kansha bikaja umune ku
lopese lua mualume mulale,
efile efile mukite
mukaji ku Lupese lua
adama, mukanji
fine efile mukulu
mufukibue bibuwa
muanda wa kuila
buene kifuko
kia adama.



Efile mui bikite mu mafuku
asambombo. Kashi efile mu
beneshibue mudiamusambobidi,
ekukita efuku dimune
dia kui kuikisha.



Mu bikinyibo bia Eden, Adan na eva
bukanji wee bapeta disanka dibuwa
mu kunemeka efile, efile mukulu
finee sha pa sanga, shamatalu
na bajika.



Pafine efile mukulu mui bikite

Muanda wa kala mu musaze wa efile,
Mukanda wa efile,

bisangidibuanga mu

Bangishilo 1-2

"Dituela dia misase iselele."

Misele 119:130



Ndekelu



Kinu bianda yakala ya mu Mukanda wa
efile wi tulongulanga wetu ebuwa Efile
mukulu mui tufe mufule buashi tui
muiyuke.

Efile muiyuke eshi tui bakite mianda
yibubi, yetamina bui mikoshi. Manyoka na
bua mikoshi na lufu, kadi Efile muitufule
bikasha bua kuitutumina muana akasha,
yezu, bua kuafua ku kulusa na munyoke
bua mpekatu, e efile kualukila na muwa
aye kualukila mu paradiso! Enu bakumine
ku efile nu mutekanga lusa na mpekatu,
ebikita na afiki na moyo kuanudi binubinu,
nukomanga naye nua kashidi.



Enu bakubine eshi binebine,
aba eshi amen kui Efile:

Efile bidi, kuminanga we Efile e bofiki
muntu bui kui tudisha mpekatu, e binubinu
wena muwa wupia. Kundekedi bua kupeta
muwa wupia binubinu n'efuku, n'ekale
n'obe na kashidi. Nkuatshishe naamu bua
ku kunemeka e na muwa kodi bui muana
obe. Amen.

Bala mukanda wa Efile na
omulungule na Efile

