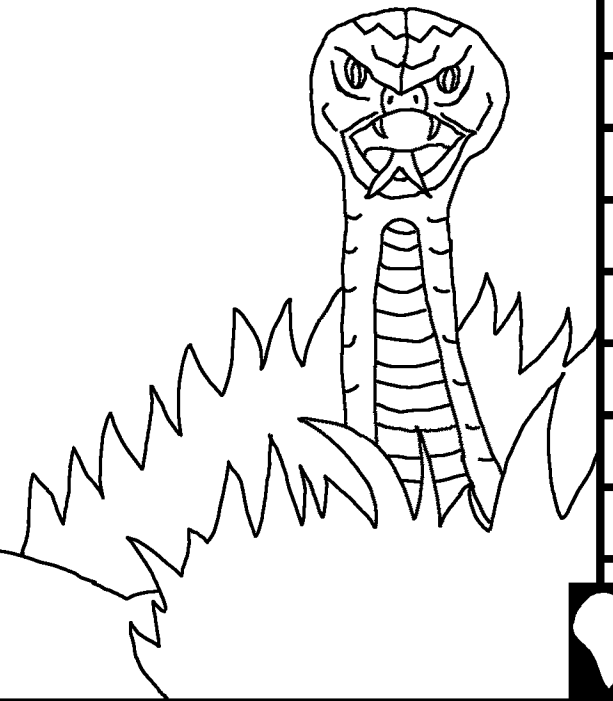


Mukanda wa bana ba efile
Buedi

Bangilo ya ma
bungama! Kui
muntu



bifunde kui: Edward Hughes

bilumbulule kui: Byron Unger; Lazarus
Alastair Paterson

bikite kui: M. Maillot; Tammy S.

bialule kui: www.christian-translation.com

bitushe kui: Bible for Children
www.M1914.org

©2021 Bible for Children, Inc.

Licence; wena makokeja akuata ata ku fuatula mianda
yakala yi, kushi kui yipana nyaa.

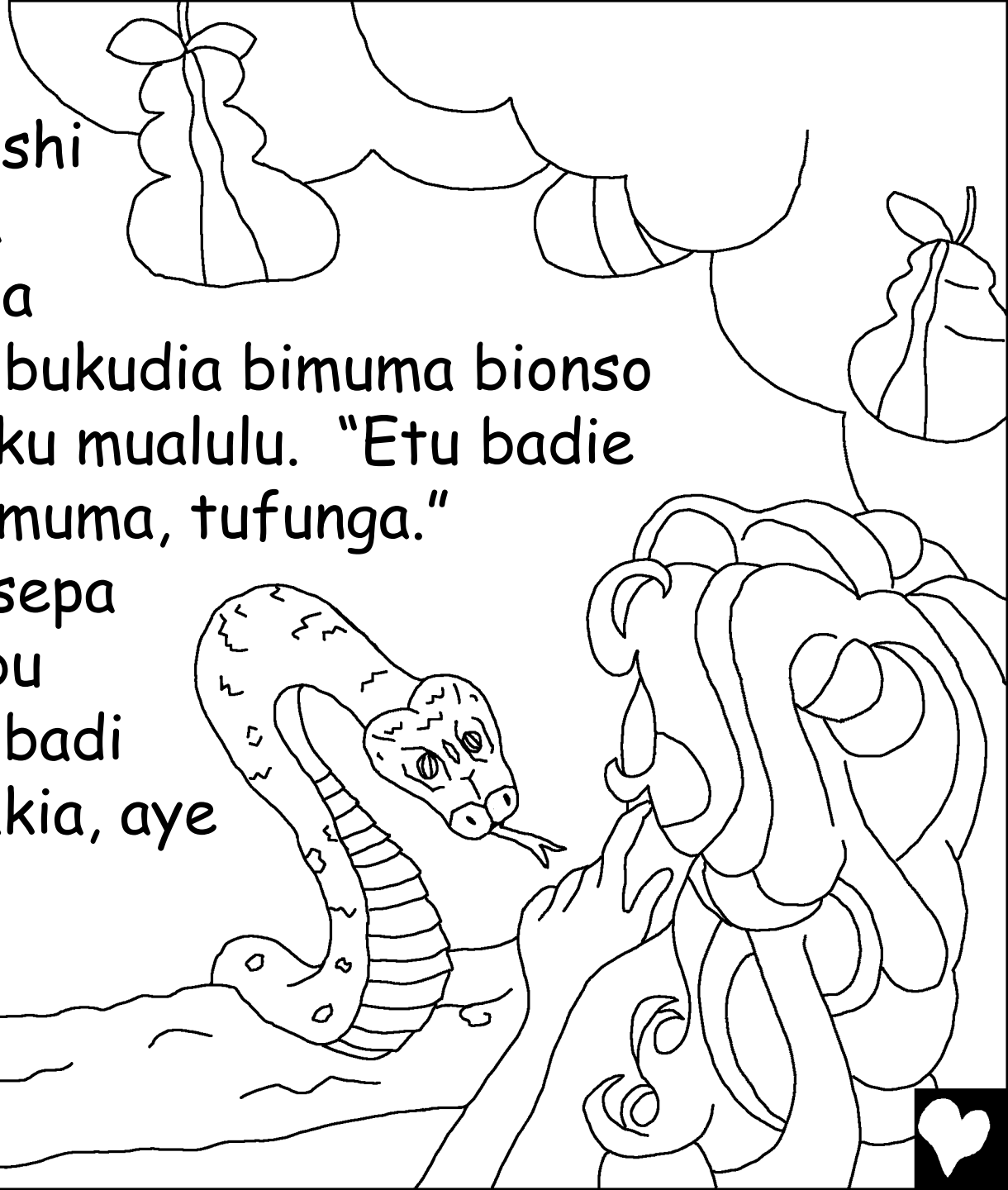


Efile mukite bionso! Pafine efile
mukite muntu a kumpala, adana ku
shalela mu budimi bua edena na
mukaji waye, babadi na masanka
ebungi bua kunemeka
efile na bua kukuata
pepi na ku mafuku ...



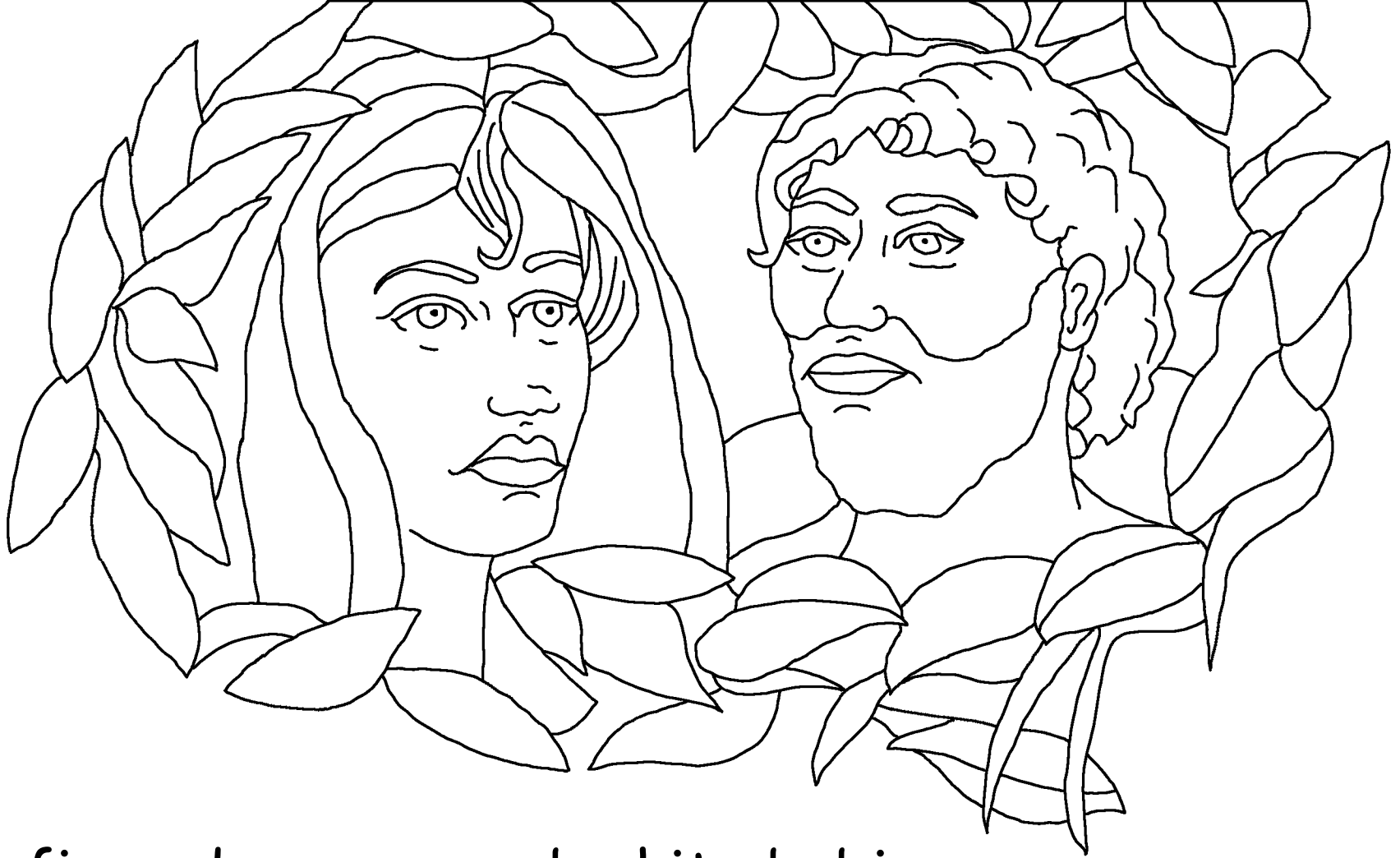
"Efile badi mukulungule bua kushi kudia miki yonso ya bimuma?" ku kuipuja nyoka ku eva. "Tui bukudia bimuma bionso anga kinune", ayo nku mualulu. "Etu badie ata kutusha kinu kimuma, tufunga."

"Tofuanga nya," kusepa nyoka. "Ofikanga bu Efile mukulu." Eva badi kibanga kimuma kiakia, aye Kuifukana nyoka e kudia kimuma.



Panyima bua eva nkupela kui efile, e kufikisa adama bua kudia kimuma ne, e adama kuamba eshi: nya nkia kupela musanze wa efile nyi nya.





Pafine adama na eva ba kite bubi,
bafine beyuke anka be ba bidibe bisumanka,
kutela masaki a fingi bu bilamba, bafine bepute
abo ku fuama mu kikutu mu mesu a efile.



Mu mashika akiola; efile kufiku mu budimi. Fine mupue kuiyuka bi fine adama na eva biabadi ba kite. Adama ku lumbuluisha eva. Eva ku lumbuluisha nyoka. Efile kuaba eshi: "Nyoko ku muela mulawu. Bana abikala na kibawo pa batandikibua." "Adama, muanda we mukite bub, nsenga ina mulawu na nsende."

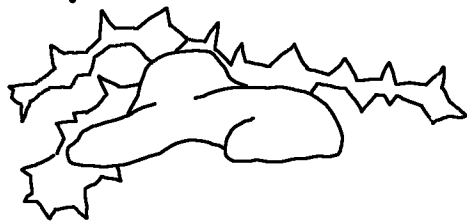


Efile kuibinga Adama na
Eva mu budimi bui buwa.
Muanda bakite bubi abu
kui baseja kui Efile a moyo.





Efile kukita mupangu wa ngoji bua
kuibakalakaja bua kutuela. Efile
kukita biamu bia mbidi bua
Adama na Eva. Efile badi
muate mbidi kuanyi?



Na nsaa, kifuko kia Adama na Eva abu kutabda.
Muana wabu akumpalan, kayina, fine mukune. Muana a
kabidi, Abela, badi mulami. Efuku dindi, kaina kufika
na biakudia kui efile mu bukuashi kui.

Abene kuata mukoko umune wibuwi

ya ku yaye ya ku
mikoko yonso
bua kui
Efile. Efila
badi movule bua
kiabuntu.



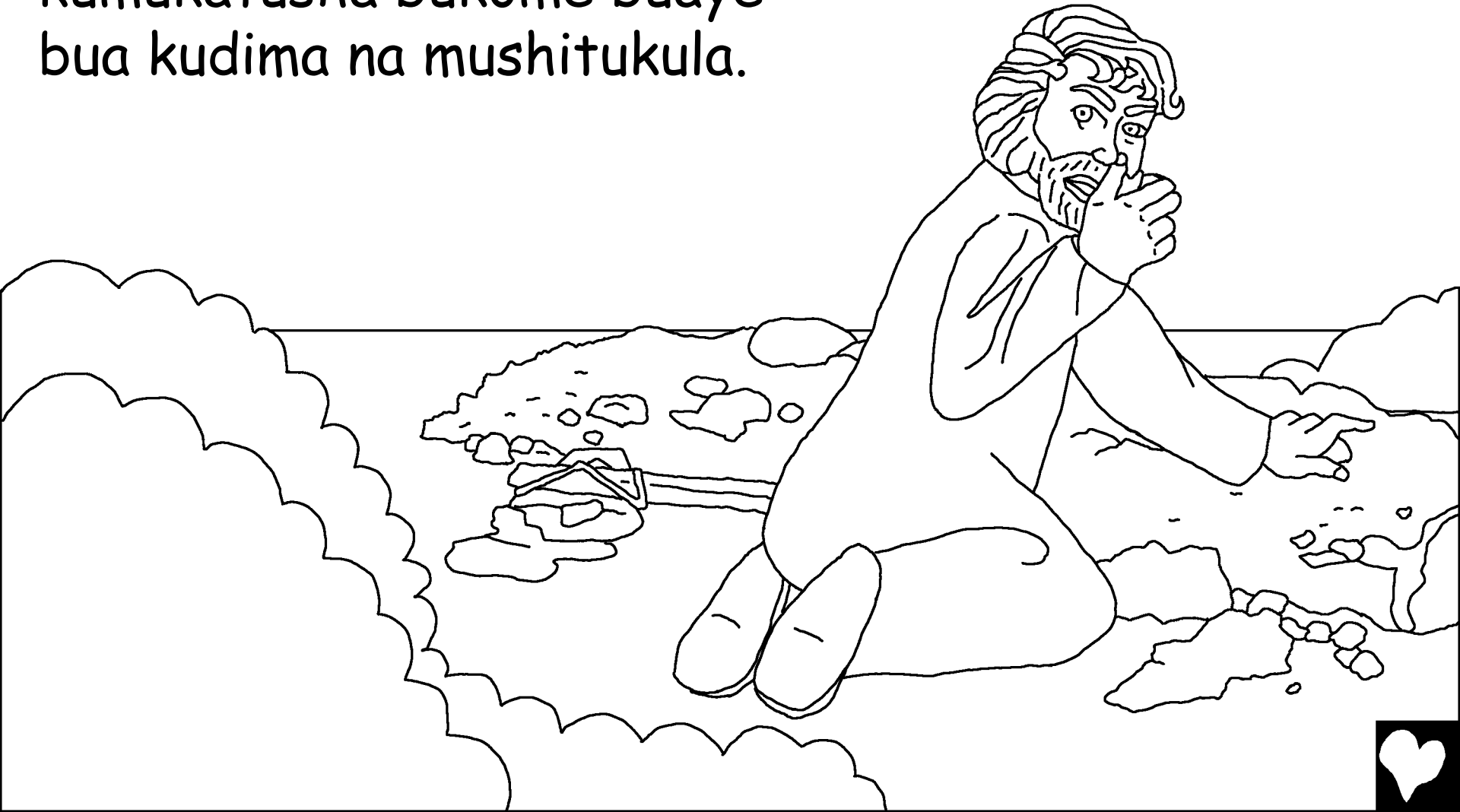
Efile tabadi musankie bua mapaa a kaina. Kaina kui
ela mu kufita munda. Efile kuakula eshi: "Enu bakite
bibuwa, tanuikalanga bakumine nyi?"



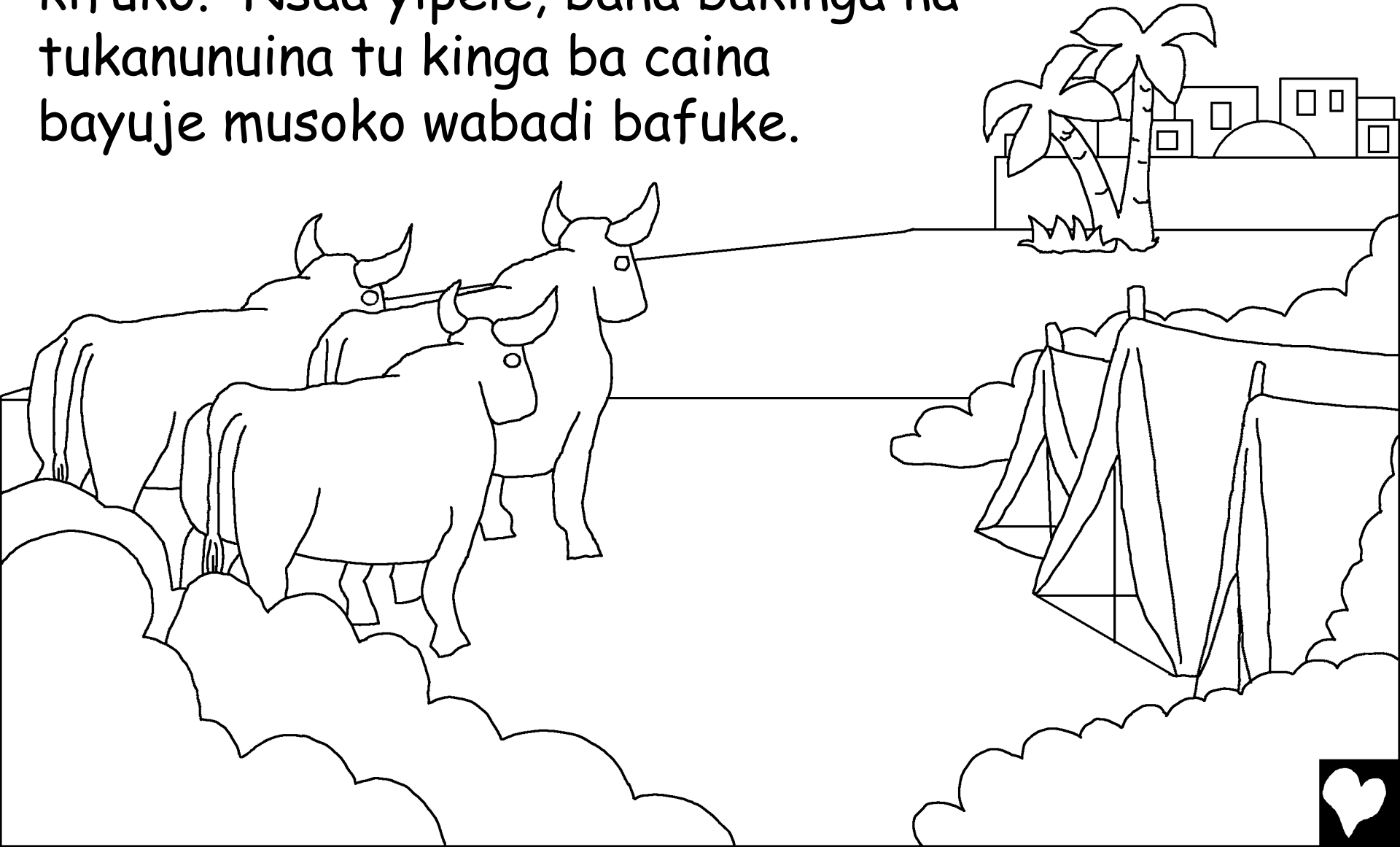
Kufuta kua munda kua kaina
takujimine. Mu nsaa idi kumpala,
pa muaba, kukuata abela e kumuipa.



Efile kulungu kui kaina. "Tutu obe ekuikunyi, Abel?"
Ami kimuiyuke nya, "Caina kudimba ne mulami a
tutu ande?" Efile kupa kaina manyoka mu
kumukatusha bukome buaye
bua kudima na mushitukula.



Kaina kutuka kumpala kua muanana. Badi muibakile muana mukanji wa adama na eva. Abu kubusha kifuko. Nsaa yipele, bana bakinga na tukanunuina tu kinga ba caina bayuje musoko wabadi bafuke.



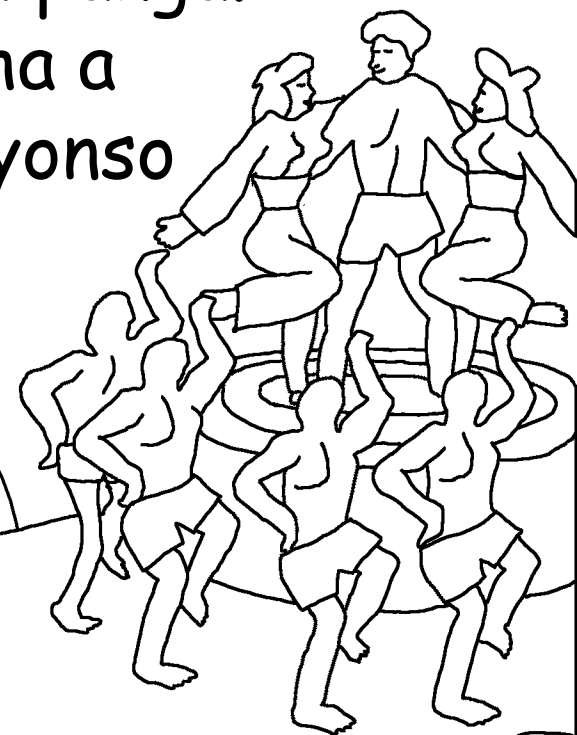
Mu nguba yawa, kifuku kia adama na eva
kukoma bukidi. Mu nsa ya kala, bantu
babadi bakomanga kui ba binubinu.



Pafine muana a seth mutandike, Eva kuakula:
"Efile mumpe seth bua kwalusha Abel."
Seth fine muntu a lukuminu mu kukoma
912 bia bidimu aye kupeta bana bebungi.



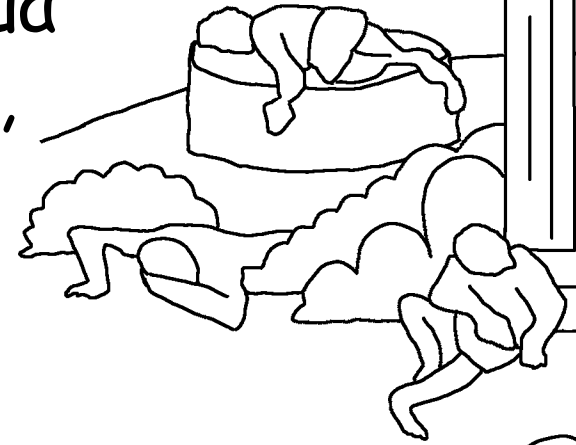
Pa nsenga, bantu abafiki na bifita bibungi
ku mushindi kui bilongo kui shipanga.
Dekedi, Efile kuatua ma kokesha a
kuluija nsenga na bingi Nyema yonso
na tonyi. Efile badi kueta
kunyinyinga muanda
wa kufuka muntu.



Muntu kushi
kui Efile ...



Muntu unu badi nowa. Yikanga ku seth, nowa badi muinanga na kuishi kabingu, badi tambukanga Efile. Ayo ku longesha bana baye bua kukumina kui Efile mukulu. Binubinu, efile nkulumbulula bua kutumika na nowa mu mushindi wikashaa na wabinebine.

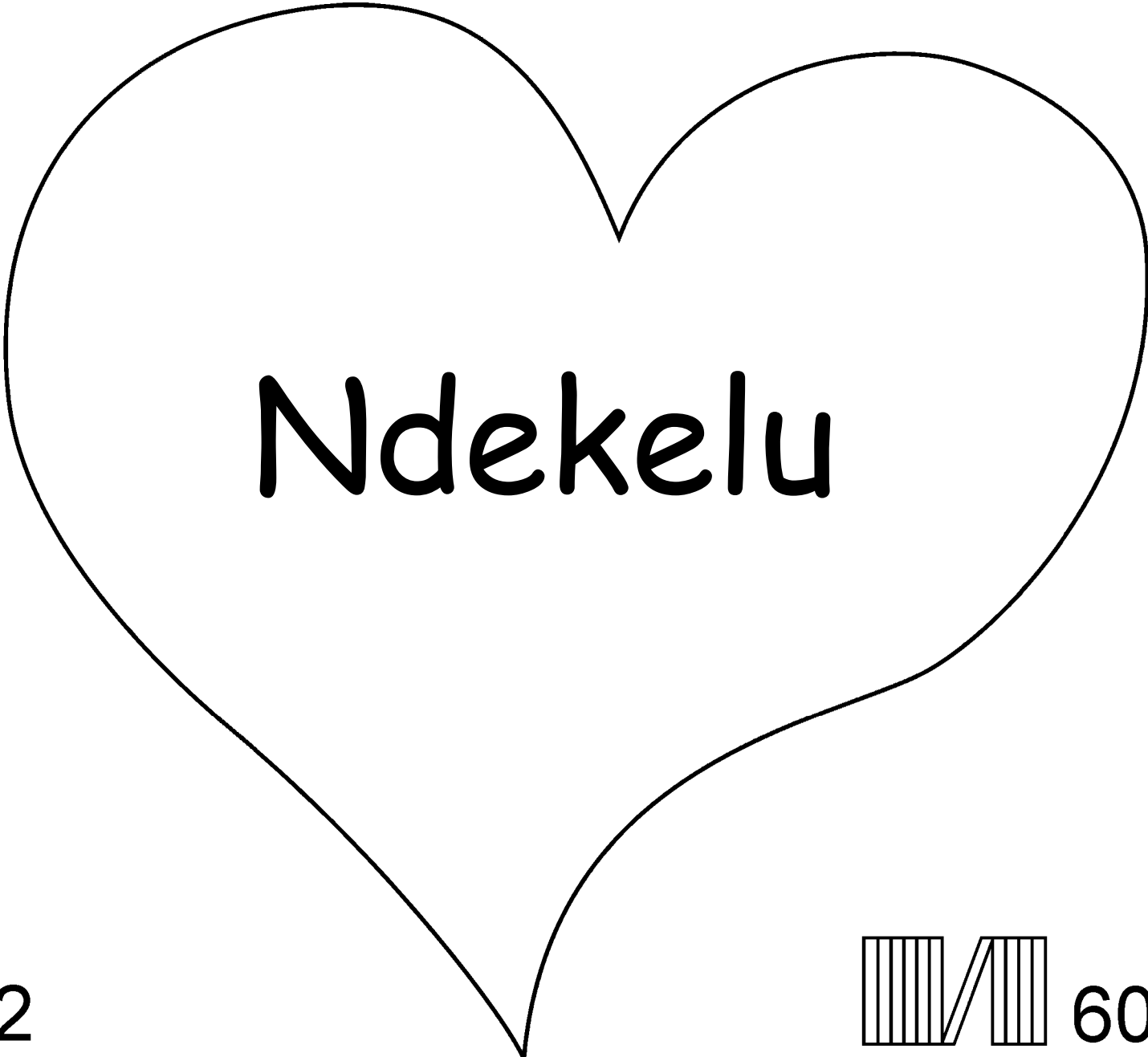


Bangilo ya ma bungama! Kui muntu
Muanda wa kala mu musaze wa efile,
Mukanda wa efile,
bisangidibuanga mu

Bangishilo 3-6

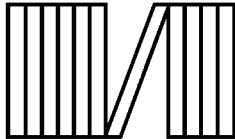
"Dituela dia misase iselege."
Misele 119:130





Ndekkelu

2



60



Kinu bianda yakala ya mu Mukanda wa efile wi tulongulanga wetu ebuwa Efile mukulu mui tufe mufule buashi tui muiyuke.

Efile muiyuke eshi tui bakite mianda yibubi, yetamina bui mikoshi. Manyoka na bua mikoshi na lufu, kadi Efile muiyufule bikasha bua kuitutumina muana akasha, yezu, bua kuafua ku kulusa na munyoke bua mpekatu, e efile kualukila na muwa aye kualukila mu paradiso! Enu bakumine ku efile nu mutekanga lusa na mpekatu, ebikita na afiki na moyo kuanudi binubinu, nukomanga naye nua kashidi.

Enu bakubine eshi binebine, aba eshi amen kui Efile: Efile bidi, kuminanga we Efile e bofiki muntu bui kui tudisha mpekatu, e binubinu wena muwa wupia. Kundekedi bua kupeta muwa wupia binubinu n'efuku, n'ekale n'obe na kashidi. Nkuatshishe naamu bua ku kunemeka e na muwa kodi bui muana obe. Amen.

Bala mukanda wa Efile na omulungule na Efile

