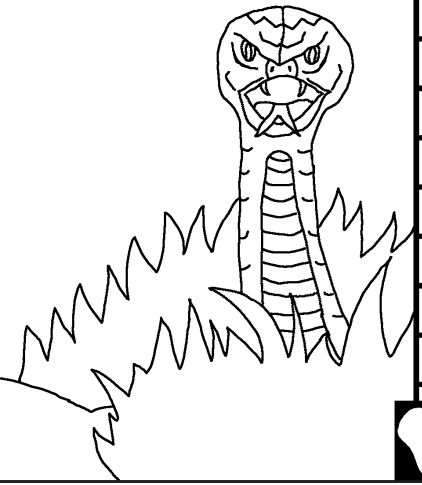


Mukanda wa bana ba efile

Buedi

Bangilo ya ma bungama! Kui muntu



bifunde kui: Edward Hughes

bilumbulule kui: Byron Unger; Lazarus
Alastair Paterson

bikite kui: M. Maillot; Tammy S.

bialule kui: www.christian-translation.com

bitushe kui: Bible for Children
www.M1914.org

©2021 Bible for Children, Inc.

Licence; wena makokeja akuata ata ku fuatula mianda
yakala yi, kushi kui yipana nyaa.

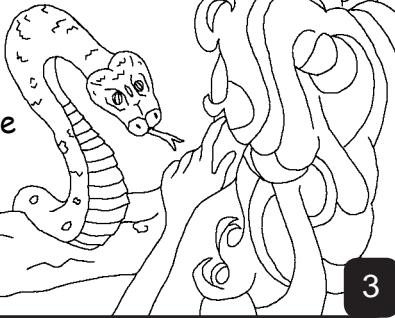
1

Efile mukite bionso! Pafine efile
mukite muntu a kumpala, adana ku
shalela mu budimi bua edena na
mukaji waye, babadi na masanka
ebungi bua kunemeka
efile na bua kukuata
pepi na ku mafuku ...



2

"Efile badi mukulungule bua kushi kudia miki yonso ya bimuma?" ku kuipuja nyoka ku eva. "Tui bukudia bimuma bionso anga kinune", ayo nku mualulu. "Etu badie ata kutusha kinu kimuma, tufunga." "Tofuanga nya," kusepa nyoka. "Ofikanga bu Efile mukulu." Eva badi kibanga kimuma kiakia, aye Kuifukana nyoka e kudia kimuma.

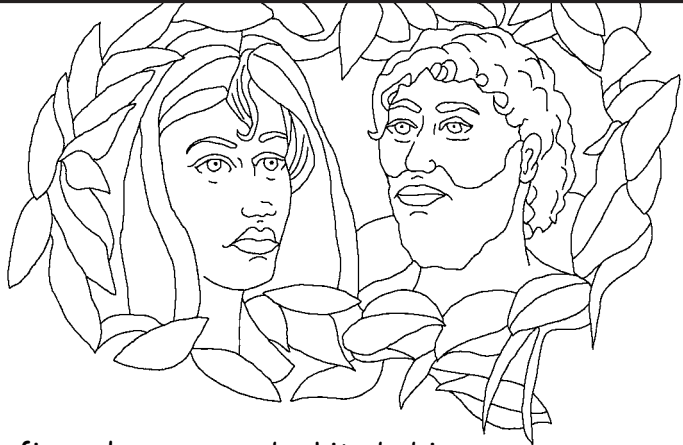


3

Panyima bua eva nkupela kui efile, e kufikisa adama bua kudia kimuma ne, e adama kuamba eshi: nya nkia kupela musanze wa efile nyi nya.



4



Pafine adama na eva ba kite bubi, bafine beyuke anka be ba bidibe bisumanka, kutela masaki a fingi bu bilamba, bafine bepute abo ku fuama mu kikutu mu mesu a efile.

5

Mu mashika akiola; efile kufiku mu budimi. Fine mupue kuiyuka bi fine adama na eva biabadi ba kite. Adama ku lumbuluisha eva. Eva ku lumbuluisha nyoka. Efile kuaba eshi: "Nyoko ku muela mulawu. Bana abikala na kibawo pa batandikibua." "Adama, muanda we mukite bub, nsenga ina mulawu na nsende."



6

Efile kuibinga Adama na Eva mu budimi bui buwa. Muanda bakite bubi abu kui baseja kui Efile a moyo.



7

Efile kukita mupangu wa ngoji bua kuibakalakaja bua kutuela. Efile kukita biamu bia mbidi bua Adama na Eva. Efile badi muate mbidi kuanyi?

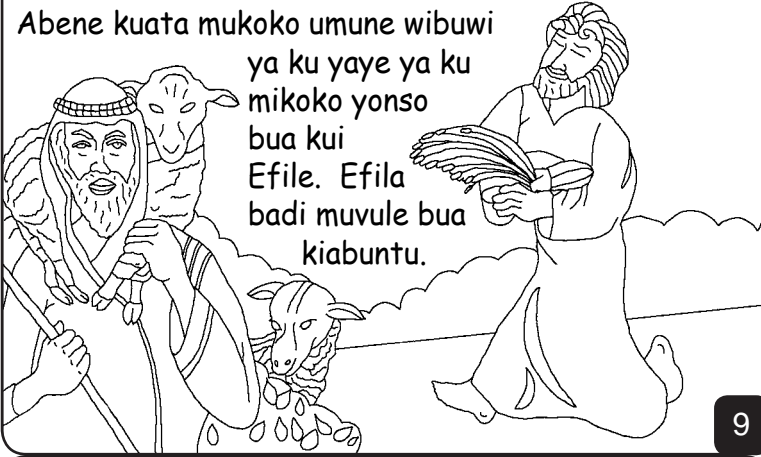


8

Na nsaa, kifuko kia Adama na Eva abu kutabda. Muana wabu akumpalan, kayina, fine mukune. Muana a kabidi, Abela, badi mulami. Efuku dindi, kaina kufika na biakudia kui efile mu bukuashi kui.

Abene kuata mukoko umune wibuwi

ya ku yaye ya ku
mikoko yonso
bua kui
Efile. Efila
badi movule bua
kiabuntu.



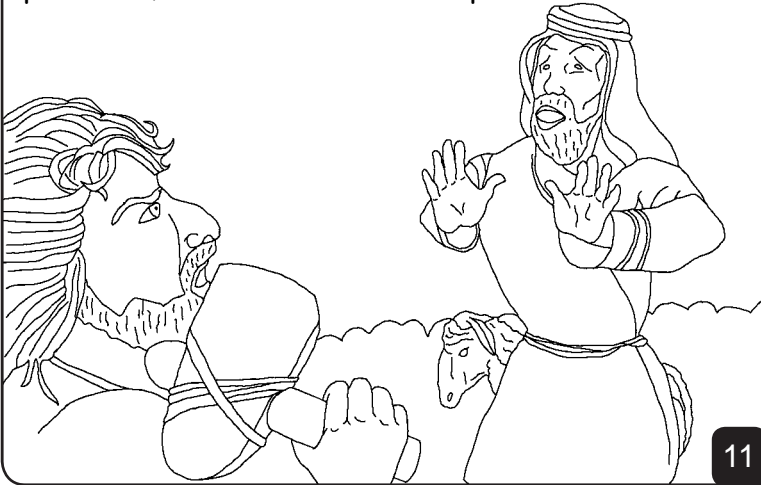
9

Efile tabadi musankie bua mapaa a kaina. Kaina kui ela mu kufita munda. Efile kuakula eshi: "Enu bakite bibuwa, tanuikalanga bakumine nyi?"



10

Kufuta kua munda kua kaina takujimine. Mu nsaa idi kumpala, pa muaba, kukuata abela e kumuipa.



11

Efile kulungu kui kaina. "Tutu obe ekuikunyi, Abel?" Ami kimuiyuke nya, "Caina kudimba ne mulami a tutu ande?" Efile kupa kaina manyoka mu kumukatusha bukome buaye bua kudima na mushitukula.



12

Kaina kutuka kumpala kua muanana. Badi muibakile muana mukaji wa adama na eva. Abu kubusha kifuko. Nsaa yipele, bana bakinga na tukanunuina tu kinga ba caina bayuje musoko wabadi bafuke.



13

Mu nguba yawa, kifuko kia adama na eva kukoma bukidi. Mu nsaa yakala, bantu babadi bakomanga kui ba binubinu.



14

Pafine muana a seth mutandike, Eva kuakula:
 "Efile mumpe seth bua kwalusha Abel."
 Seth fine muntu a lukuminu mu kukoma
 912 bia bidimu aye kupeta bana bebungi.



15

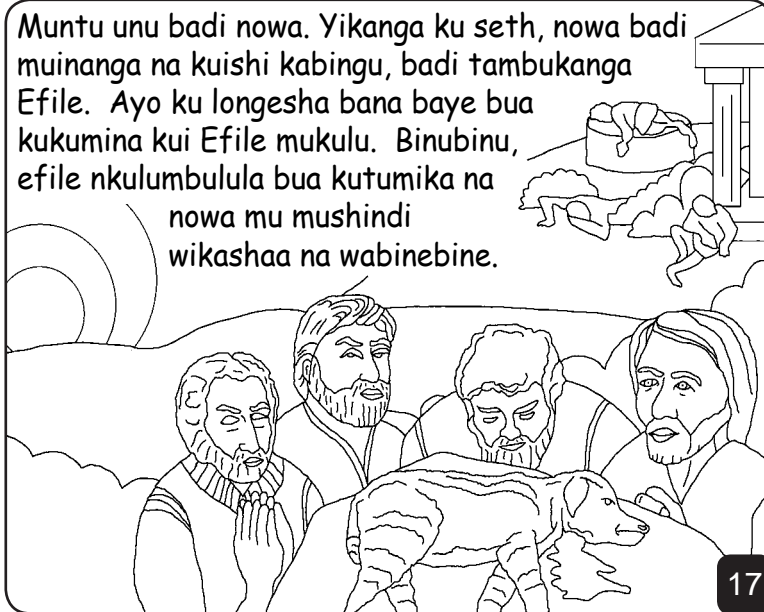
Pa nsenga, bantu abafiki na bifita bibungi
 ku mushindi kui bilongo kui shipanga.
 Dekedi, Efile kuatua ma kokesha a
 kuluija nsenga na bingi Nyema yonso
 na tonyi. Efile badi kueta
 kunyinyinga muanda
 wa kufuka muntu.



Muntu kushi
 kui Efile ..

16

Muntu unu badi nowa. Yikanga ku seth, nowa badi
 muinanga na kuishi kabingu, badi tambukanga
 Efile. Ayo ku longesha bana baye bua
 kukumina kui Efile mukulu. Binubinu,
 efile nkulumbulula bua kutumika na
 nowa mu mushindi
 wikashaa na wabinebine.



17

Bangilo ya ma bungama! Kui muntu

Muanda wa kala mu musaze wa efile,
 Mukanda wa efile,

bisangidibuanga mu

Bangishilo 3-6

"Dituela dia misase isebele."
 Misele 119:130

18

Kinu bianda yakala ya mu Mukanda wa efile wi tulongulanga
 wetu ebuwa Efile mukulu mui tufe mufule buashi tui muiyuke.

Efile muiyuke eshi tui bakite mianda yibubi, yetamina bui
 mikoshi. Manyoka na bua mikoshi na lufu, kadi Efile
 muitufule bikasha bua kuitutumina muana akasha, yezu, bua
 kuafua ku kulusa na munyoke bua mpekatu, e efile kualukila
 na muwa aye kualukila mu paradiso! Enu bakumine ku efile nu
 mutekanga lusa na mpekatu, ebikita na afiki na moyo kuanudi
 binubinu, nukomanga naye nua kashidi.

Enu bakubine eshi binebine, aba eshi amen kui Efile: Efile
 bidi, kuminanga we Efile e bofiki muntu bui kui tudisha
 mpekatu, e binubinu wena muwa wupia. Kundekedi bua
 kupeta muwa wupia binubinu n'efuku, n'ekale n'obe na
 kashidi. Nkuatshishe naamu bua ku kunemeka e na muwa
 kodi bui muana obe. Amen.

Bala mukanda wa Efile na omulungule na Efile

20

Ndekkelu

2

60

19