

Mukanda wa bana ba efile  
Buedi



Eyilu, miaba  
yibuya ya  
efile



bifunde kui: Edward Hughes

bilumbulule kui: Lazarus  
Alastair Paterson

bikite kui: Sarah S.

bialule kui: [www.christian-translation.com](http://www.christian-translation.com)

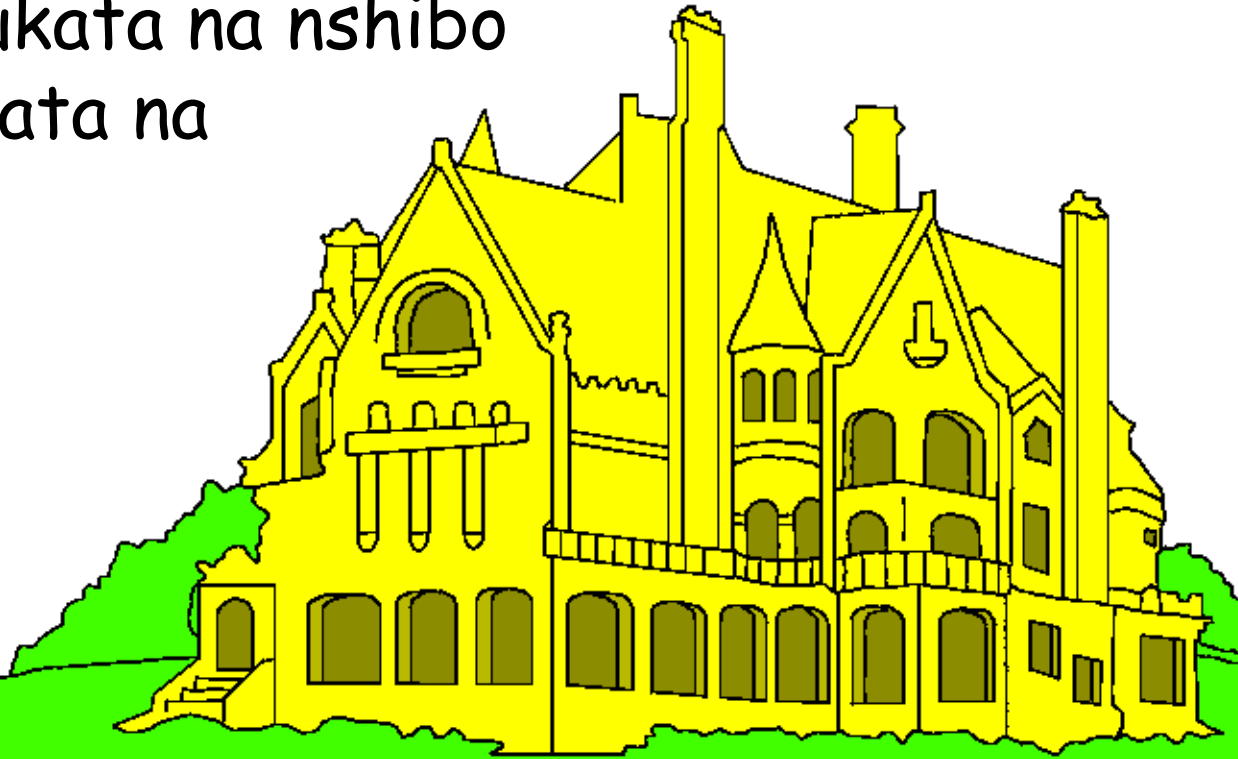
bitushe kui: Bible for Children  
[www.M1914.org](http://www.M1914.org)

©2021 Bible for Children, Inc.

Licence; wena makokeja akuata ata ku fuatula mianda  
yakala yi, kushi kui yipana nyaa.



Pabadi Yezu na mowa pa nsenga, badi akulanga bua nsenga kui bayidi baye. Kuibetamina "mushibo mua tata", e kuambe shi kui bishalelo papaa. Muaba mukata na nshibo yibuwa. Eyilu dikata na dibuwa na ndikile nshibo yonso ya nsenga.



Efile amba: kiebanga ku kuluibuilanga muaba. Shi nakulumbuala muaba, na nalukila e na kuakidila buande. Yezu kuenda kui Eyilu, pekala mubiukuluke ku lufu. Pabadi bayidi bakishe, Yezu muabuibe, e na bifuba biselanga bua kumona kuabo.



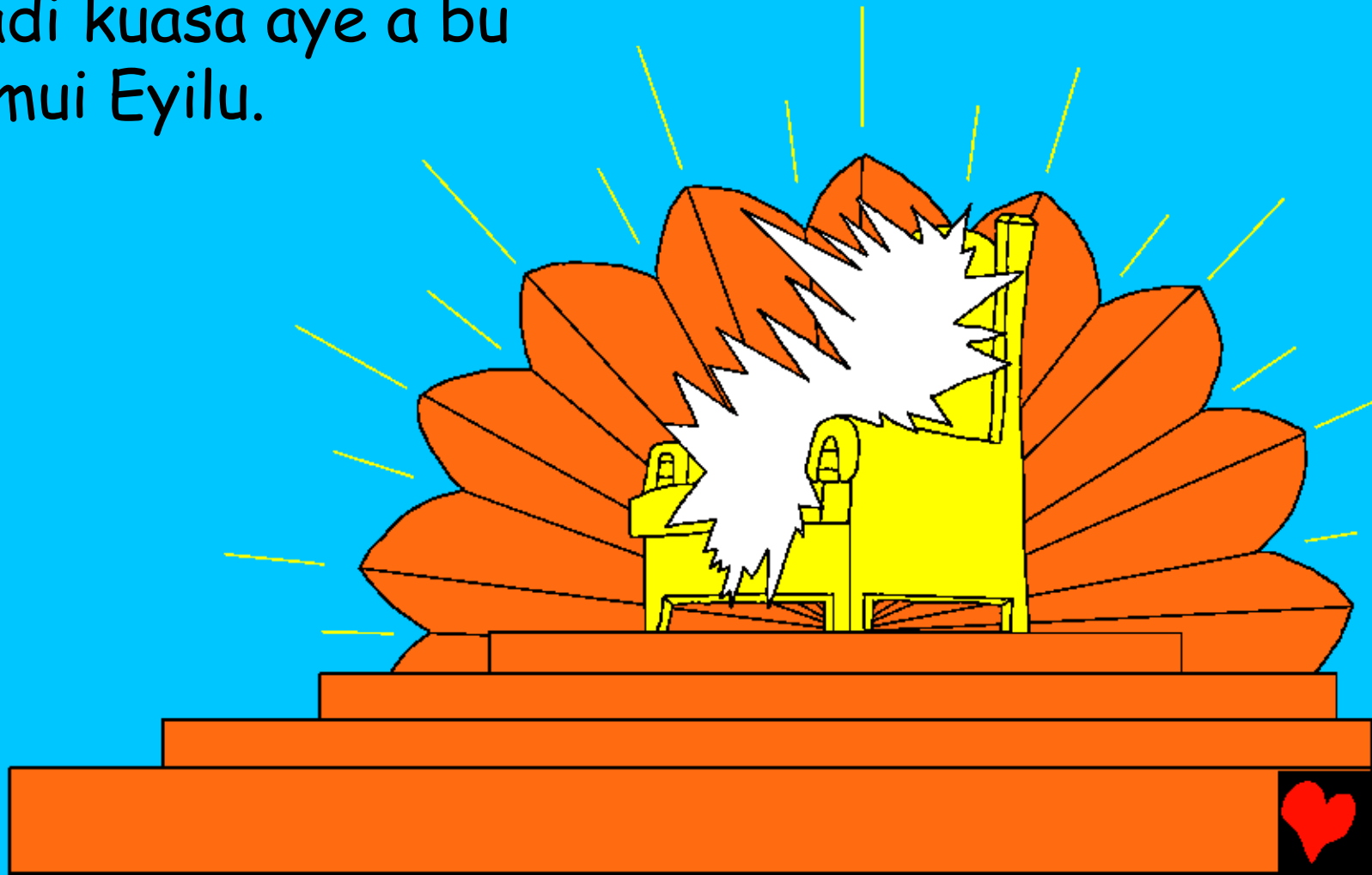
Kubanga anka papaa, bena klisto kumbanga kuvuluka miloyo ya Yezu bua kuyingudiluka. Yezu kuambe eshi alukanga mukapindi, nsaa ipela idindiye. Kadi kinyi ki bua kufika bena klisto bua kufua kumpala kua shafikile?

Mukanda wa Efile abikala musangu umune na Yezu.

Kuikale kupangika pa mbidi, kuikala na Muanana.



Buakabuluiba, mukanda wa ndekelu wa mu mukanda wa Efila, Awakula pa muaba wikunyi Eyilu di buwaa. Kintu kitshile ki buwa ki, mu mushindu wikashaa, Eyilu na ndjibu wa Efile mukulu. Efile e muaba onso, kadi kuasa aye a bu mfumu mui Eyilu.



Banjelu na bindi bantu ba mui  
Eyilu bakukuilanga Efile mukulu  
mui Eyilu. Bayimbanga misele  
yinenka ya kutumbisha Efile.

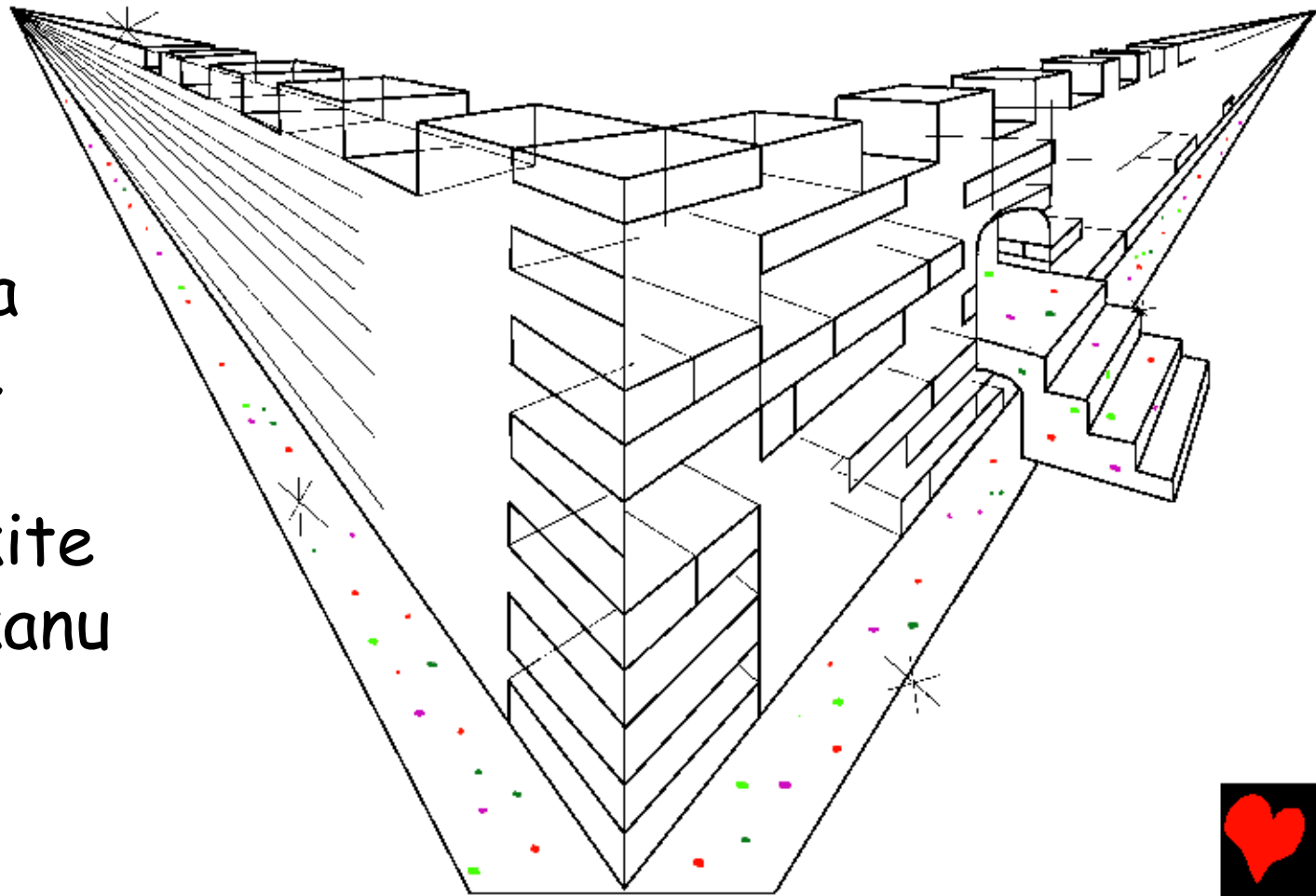


Talayi indi mifundu ya musele wabadi imbanga: NUI  
BALONGAME MUANDA NUI BETUNYENGE EFILE  
MUKULU KU MASE ENU MUANDA  
KISAMBA KIONSO NA BANTU  
NA TUI BAKITE BA MFUMU  
NA BAKULU BA WETU EFILE  
MUKULU. (BUAKABUILUIBUA.  
5:9)





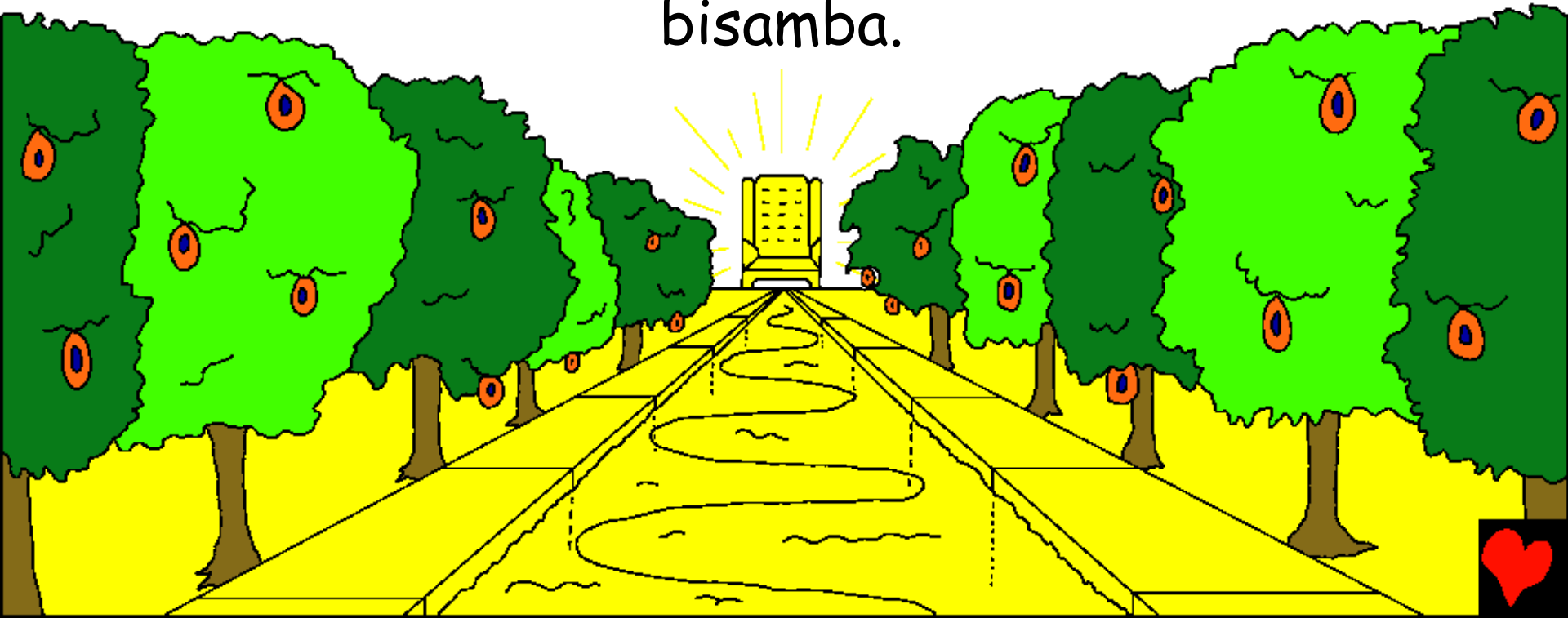
Masaki onso andekedi a mu mukanda wa Efile mukulu ibadi ifunde Eyilu bui "Yipia ya Yeruzalema". Ki, kikata, kimanu kibula pandiaa. Kimanu ki mu ebue dia lubuebue, kitokie bu cristal. Miyume na mabue ebuayi bapute kushi kua kimanu, yiyingayinga na matoba bia mulu. Kimune kionso bia mu Ewummbu bikite na kimune kikanu kitubule.



Bibi bikata bibukopo ta biakangikile. Tutule e tutale ku mpese kuetu ... kakaaa paradizu ki bibuwa muanda muaye. Wewumbu mukite bia buwa, bu ekopo dia ditoka. Ata eshinda enka mu ngolo.



Muwa wibuwa na nkutoke mema a muwa atshilanga  
ku nkusa abu mfumu. Kumpese konso kua mema  
kusangananga mutshi wa moyo, ubadi upetshibue  
musangu wa kumpala mu budimi bua yedena. Butshi  
unu wa kashaa. Ukueta kupatama bimuma Ekumi na  
ibidi bishilene. Mushindu wishilene ku mueji onso.  
Na masaki a mutshi wa moyo epadi bua kondopa  
bisamba.



Eyilu tadina muanda ata bua nguba  
ata na mueshi bua kutoka. Bia.



Ata Nyema ya mu paradizu yekanga yishilene.  
Tabafine na mmo na befulene. Mizeu na mikoko  
badianga bisusua pamune. Ata ntambue abukome  
ayidia nsonyi bu bsuf. Muanana ambaa: tabakutapa  
ata kuluija mu muendie wande wibua.



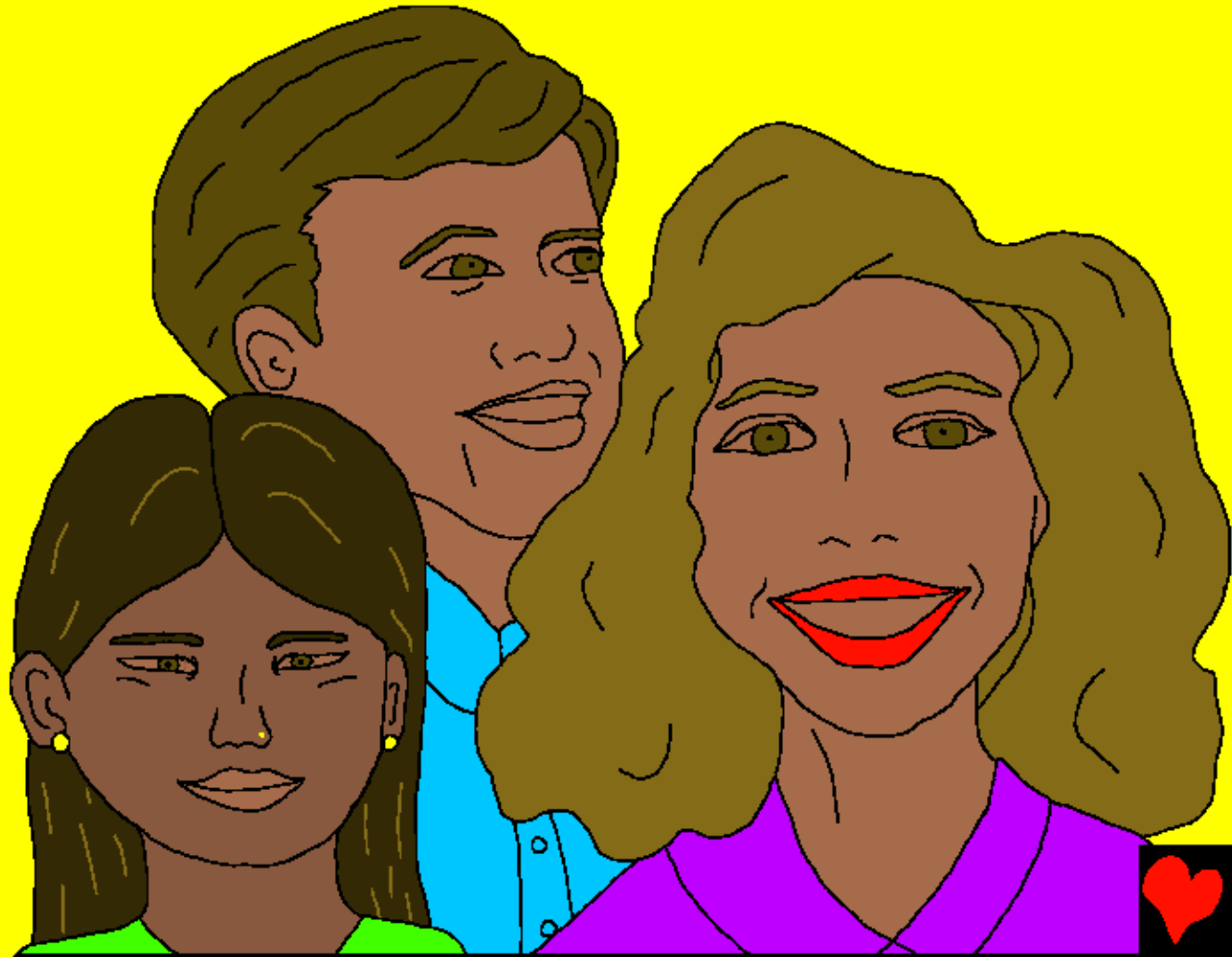
Kuditala kuatudi etu, tuibakine kumona ke kui kupangika kua bintu kui Eyilu. Ata miaku ya kifita tadiakuibue nya. Muntu ata umune ta muikupile ata lubombo. Ta kui masapi ku kibelo, muanda takuibandifi mui eyulu nya. Ata bena madimi, ata pantomboji, bandoshi na badi ba matata. Ata milushio ata bindi bia mushindo kui eyilu.



Kue ilu na efile ta kui  
mipodi nia, mushindu,  
bana ba efile  
badilanga bua.



Takubadi ejina ata dia lufu mui eyilu. Bantu ba Efile abikala bua kashidi na Efile mukulu. Ta kui makenganya, ata ata miadi, ata busungu. Maladie ta ekudi, ata kuilekena, ata kukika, bantu bonso kui Eyilu na masanka na Efile.

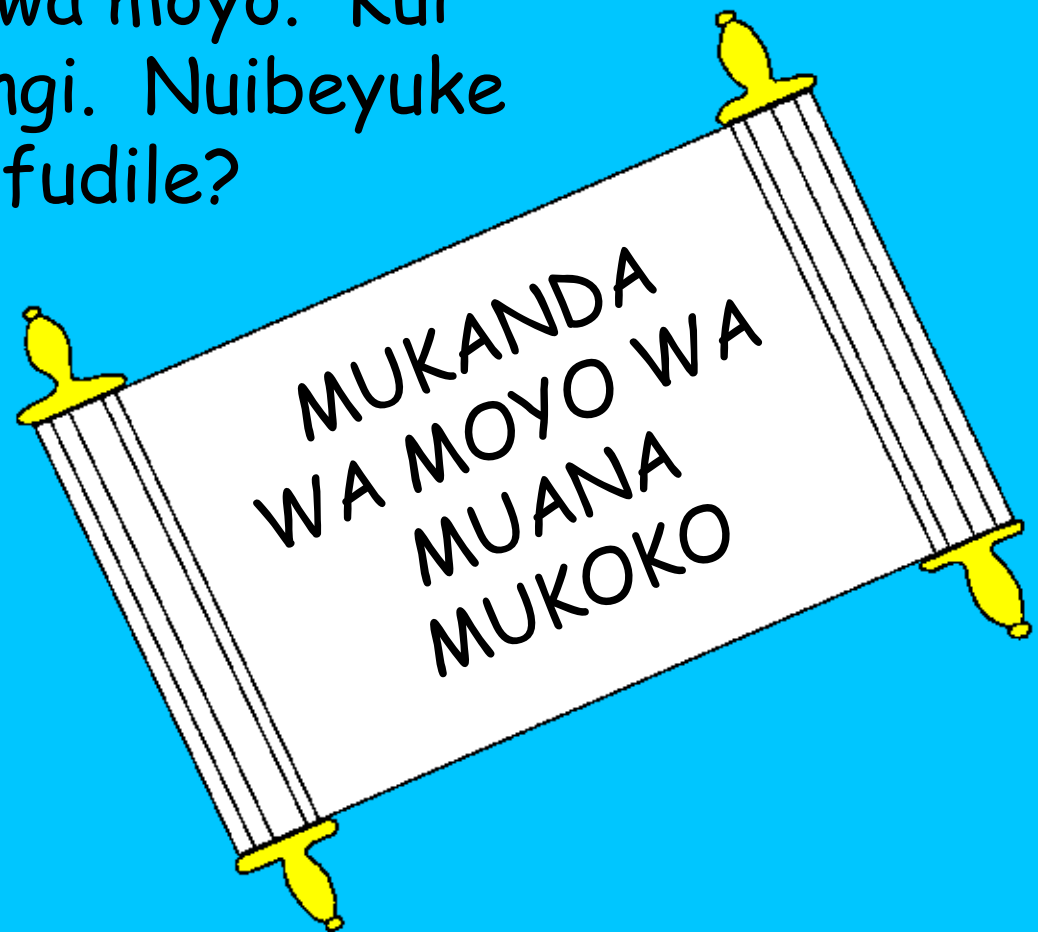




Bibuwa kabidi, paradiso ngua bansongualume  
bansonguakashi (na bakulu abo) babadi bele musaze  
lui Yezu kilisto bui muanana abu kumunemeka bu  
muanana. Kui iyilu, kui mukanda ubikidibue  
mukanda wa mukoko wa moyo. Kui  
majina a bantu bebungi. Nuibeyuke  
eshi majina kua adi ufudile?

Bantu bonso  
batulanga  
makolobela  
kui Yezu.

Ejina diobe kuanka?



Kipolo kia ndekedi kia mu Mukanda wa Efile kui Eyilu bi wi bia masanka bia tukanda tua benyi. E na kikudi abio kuipetena: fika e nanyi badi mu dindije 'fika' e ena nyota afike. E ena kivulu, afike ate mema moyo bisumanka.



Eyilu, miaba yibuya ya efile

Muanda wa kala mu musaze wa efile,  
Mukanda wa efile,

bisangidibuanga mu

Yona 14; 2 Kolinto 5;  
Apocalypse 4, 21, 22

"Dituela dia misase iselegele."  
Misele 119:130



Ndekelu



Kinu bianda yakala ya mu Mukanda wa efile wi tulongulanga wetu ebuwa Efile mukulu mui tufe mufule buashi tui muiyuke.

Efile muiyuke eshi tui bakite mianda yibubi, yetamina bui mikoshi. Manyoka na bua mikoshi na lufu, kadi Efile muitufule bikasha bua kuitutumina muana akasha, yezu, bua kuafua ku kulusa na munyoke bua mpekatu, e efile kualukila na muwa aye kualukila mu paradiso! Enu bakumine ku efile nu mutekanga lusa na mpekatu, ebikita na afiki na moyo kuanudi binubinu, nukomanga naye nua kashidi.

Enu bakubine eshi binebine, aba eshi amen kui Efile: Efile bidi, kuminanga we Efile e bofiki muntu bui kui tudisha mpekatu, e binubinu wena muwa wupia. Kundekedi bua kupeta muwa wupia binubinu n'efuku, n'ekale n'obe na kashidi. Nkuatshishe namu bua ku kunemeka e na muwa kodi bui muana obe. Amen.

Bala mukanda wa Efile na omulungule na Efile

