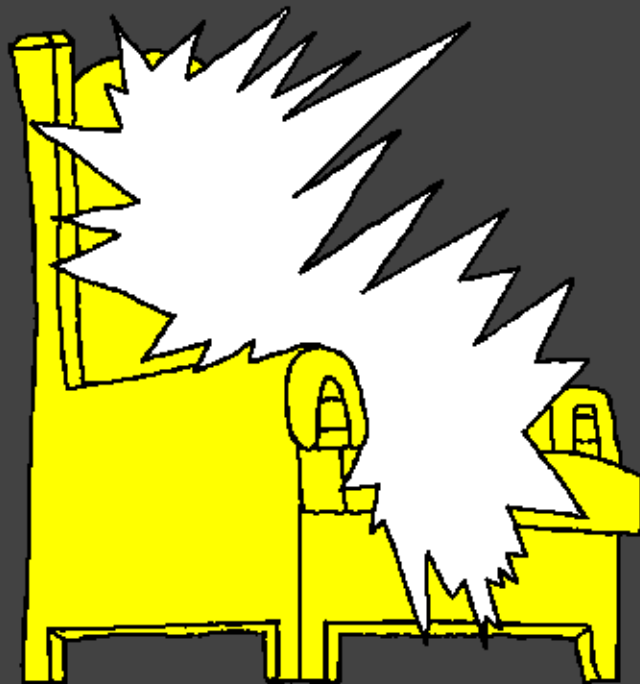


Ilagano Iya bana  
Kumanikija



Igulu, Numba  
soga ya  
Mulungu



Yandikagwa na: Edward Hughes

Ikaboneshwa na: Lazarus  
Alastair Paterson

Ikabuchiwa na: Sarah S.

Yagolokagwa na: [www.christian-translation.com](http://www.christian-translation.com)

Yabyajiwa na: Bible for Children  
[www.M1914.org](http://www.M1914.org)

©2021 Bible for Children, Inc.

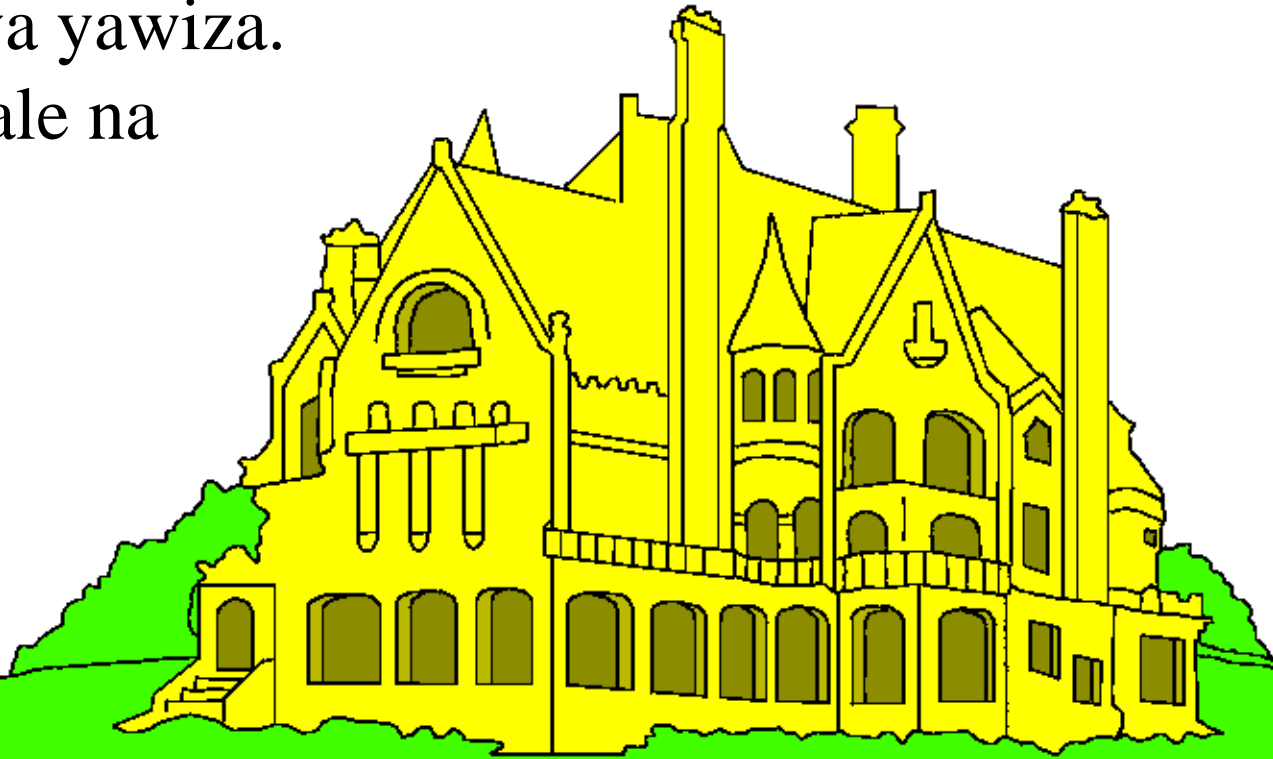
Leseni: Uzuniligije kukopi nulu kutona lugano  
Iwenu, ulu utu gujaga.



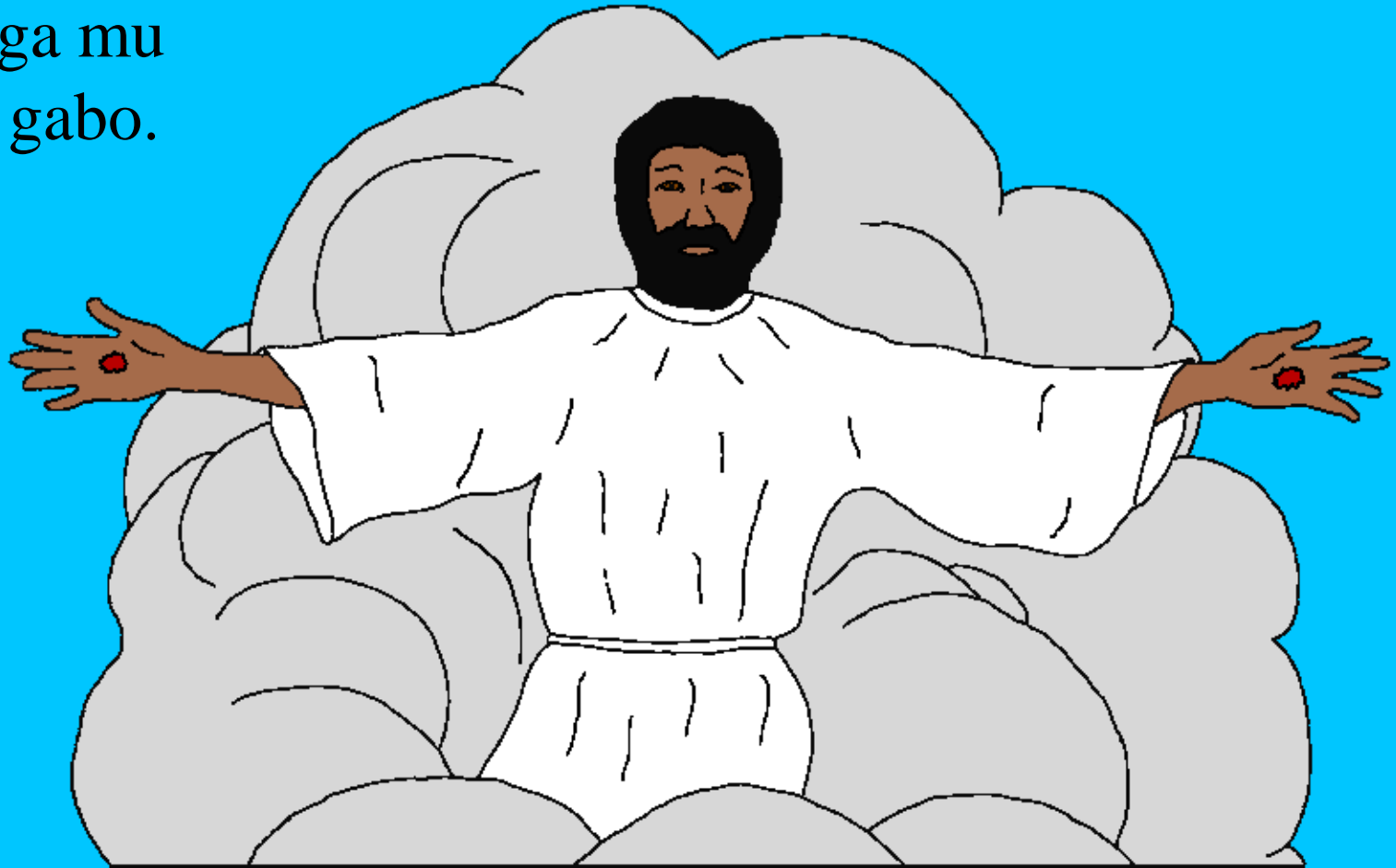
Aho Yesu wikalaga ha si akabalanga bahemba bakwe ya  
ηwigulu. Wiyitanaga “Numba ya ηwa Baba Wane”, na  
akahaya galiko manumba mingi.

Inumba itale, hi kaya yawiza.

Igulu lili numba nhale na  
kaya yawiza kukila  
kaya ja mu si.



Yesu akahaya, “Nalija kumubegeja wikalo. Na ulu nuja kumubegeja hanhu, nakwiza hangi kumsumbila kunwane.”  
Yesu akaja nwigulu, aho wahimbuka mu bafu. Aho bahemba bakwe balinolela, Yesu usolwa kwigulya, na ilunde lyumbokela kwinga mu miso gabo.

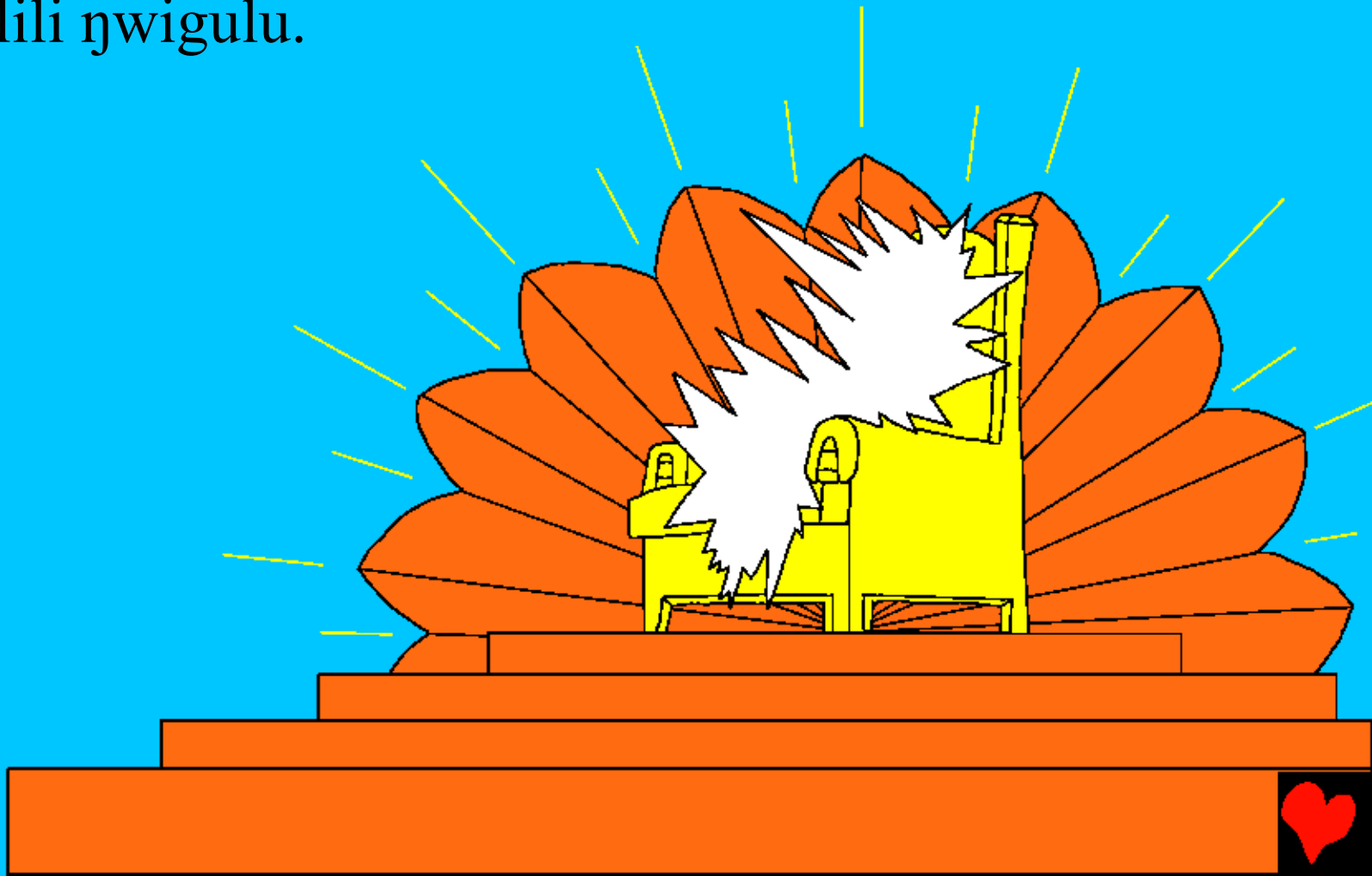


Kwinga henaho, bazunya bizukilwe bulagane wa nwa Yesu wa kushoka hangi kubo. Yesu akahaya akushoka kakanza kagehu, ako tutudula kwitegeleja. Aliyo ilikinehe u ku bakristu abo balacha aho atali kwiza?

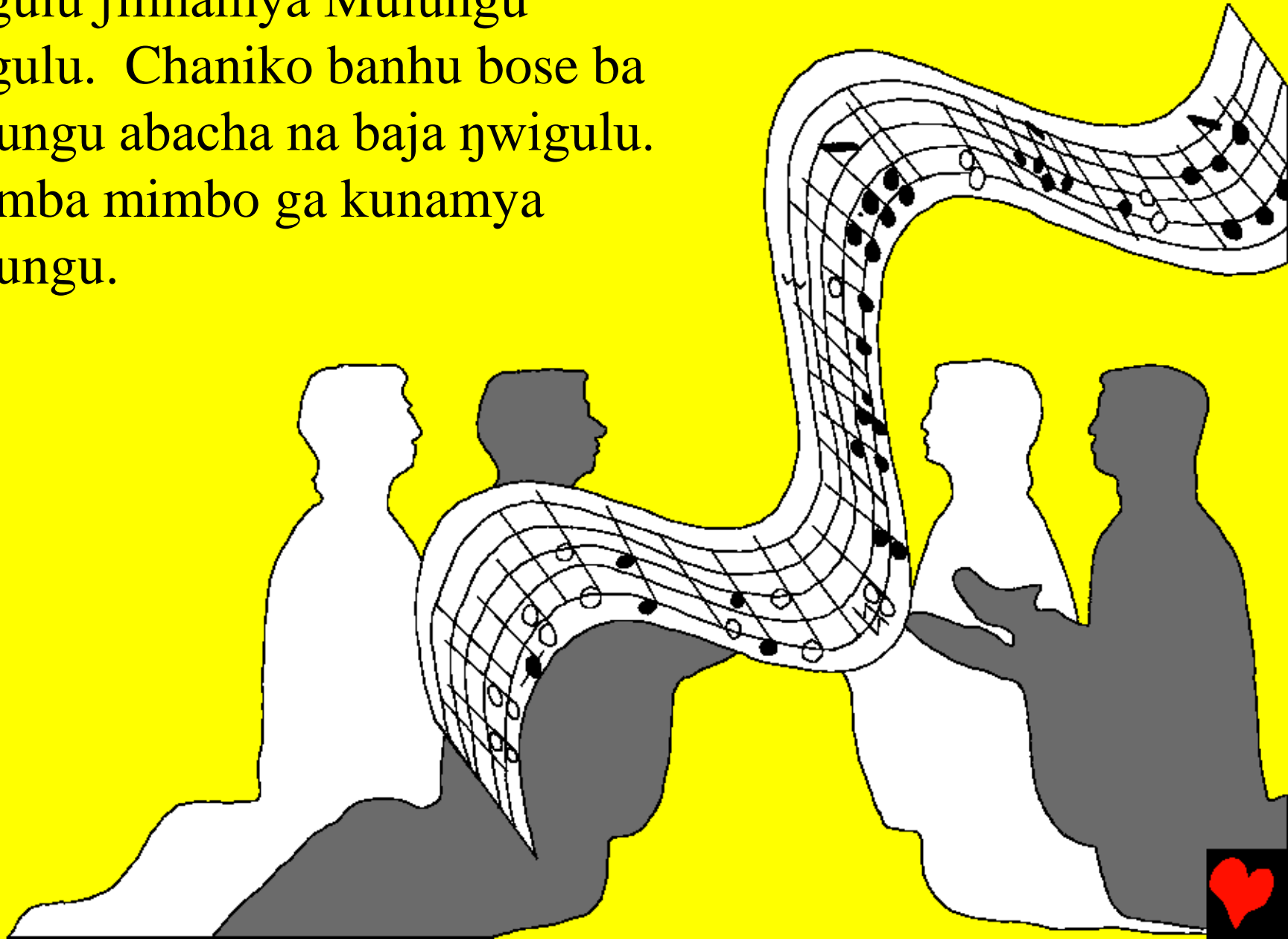
Shandikwa shela sha Mulungu sha haya giki balaja kamo na kamo kuli Yesu. Ukubi uti namili hu kubi kihamo na Seba.



Kukundulwa, sitabo sha nhalikijo, shatusombolela umo igulu lili lya kukamaja. Shikolo sha kukamaja fili giki, mu bu helegeke, Igulu ili kaya ya Mulungu. Mulungu ali hose hose, aliyo isumbi lyakwe litemelo lili nwigulu.



Malaika na shisumva shingi sha  
nwigulu filinamya Mulungu  
nwigulu. Chaniko banhu bose ba  
Mulungu abacha na baja nwigulu.  
Balimba mimbo ga kunamya  
Mulungu.



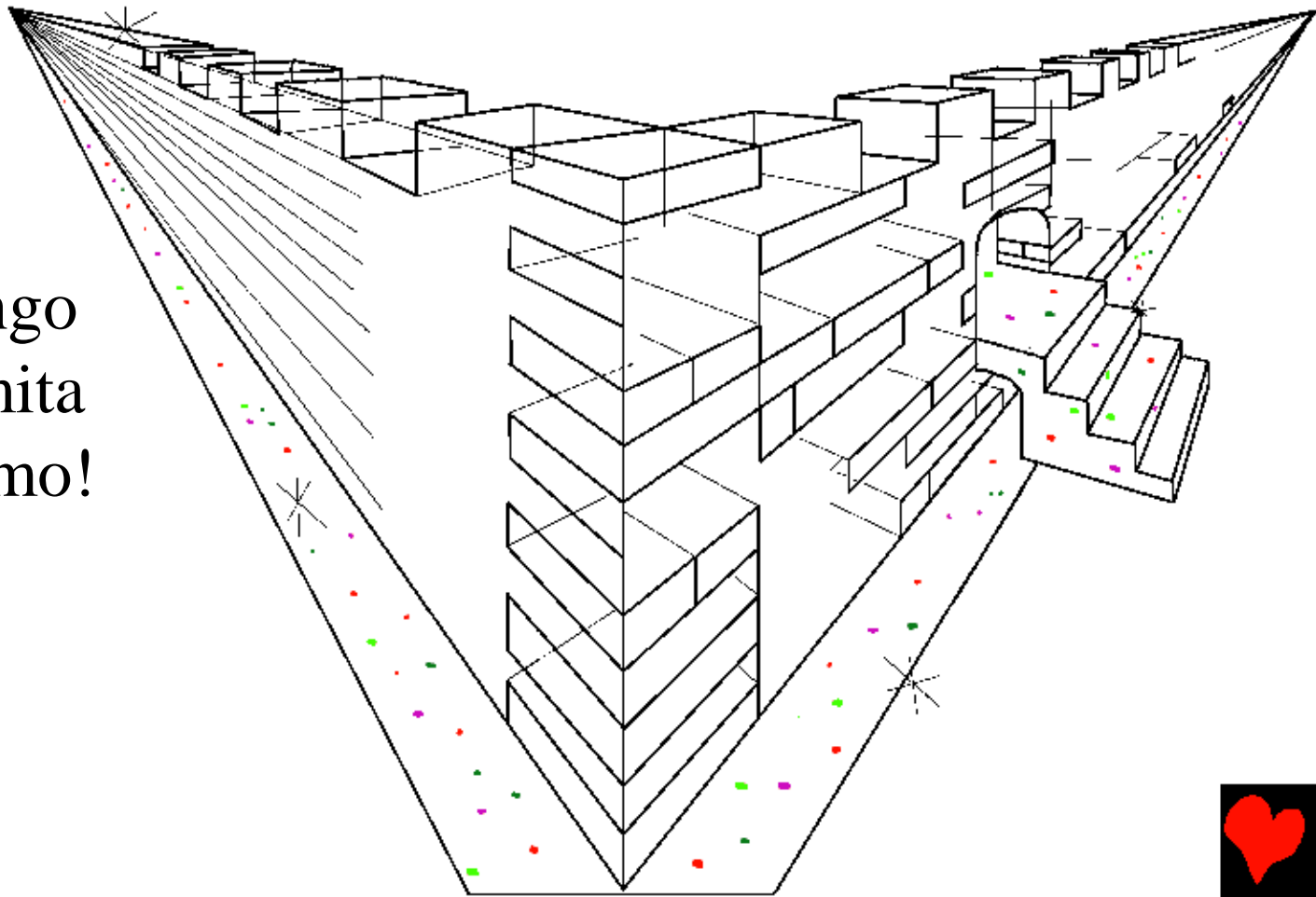
Iyi mihayo migehe ya Iyimbo limo Iyaho: BEBE  
WIGELELILE UYO WATUKOMOLA KULI  
MULUNGU KULWA MININGA  
GAKO KWINGA MU BULI  
LUGANDA NA MIZENGO NA  
WATWITA BISE KUBI BATEMI  
NA BAGABIJI  
BA MULUNGU  
WISE.

(Kukundulwa  
5:9)

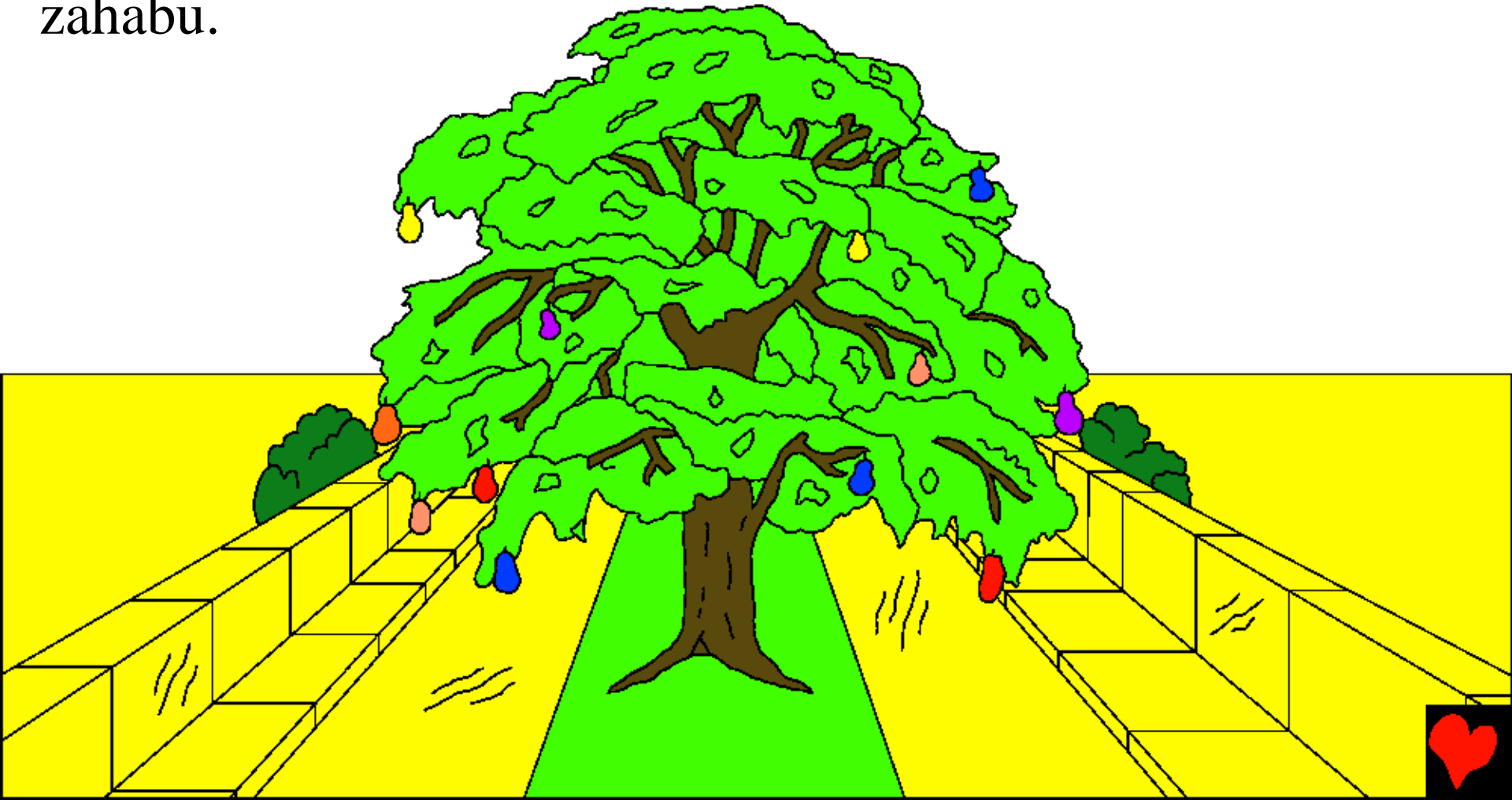




Mbapula ja kimaligije ja shandikwa shela sha Mulungu jilisombola igulu lili “YERUSALEMU MHYA” Ili nhale kukilaho, ili na ndugu nihu hanze. Kazengele ka ndugu yenyiyo kali ka mawe ga yasipi, iyikolile giti bilauli nela no. I misingi ya linzengo igalililwe na mawe ga buli mbika ga mpango ηwingi. Buli mita guli gwa lulu imo!



I mibita mitale ya lulu italugalagwa. Twingilagi mo ...  
YEE! Mugati yigulu hali hawiza I linzengo libegelegije na  
zahabu yawiza iyikolile giti bitauli nela no. Na mabalabala  
nago gabegejiwe  
zahabu.



Mongo gwa minzi ga bupanga, malabangizu giti bilauli gafumile nwinsumbi lya butemi lya Mulungu. Buli ipandi lya mongo guliko nti gwa bupanga, uyo gwali nwigobe lya Edeni. Nti gwenuyo guli gwa helegeke. Gukatwajaga matwajo ikumi na abili ga mbika na mbika, buli nweji matwajo ga mbika na mbika. Na madutu ga nti gwenuyo gene ga kugapija mahanga.



Igulu litigongaga isana lya limi nulu nweji. Ikujo lya nwa Mulungu lyene likinhaga isana. Kwenuko butiko bujiku.



Na shitugo shose kwenuko fili sha helegeke. Shose fili giti sha kusugwa. Mhuge na kidahinda jiladimila hamo. Shimba nayo iladima maswa giti ng'ombe. Mulungu alihaya giki, “Batalagulaja nulu kukenangula u mu lugulu lwane lwela lose.”



Ulu twalola twabona giki,  
fikolo shingi shitimo  
ng'wigulu. Itiho mihayo  
yasagala. Kuduhu bulwi  
nulu kwiyeja benekele.  
Gatiho malugalilo ha  
milyango, iki batiko bibi  
nwigulu. Batiko  
balomolomo, babulagi,  
balogi, nulu basembo  
bose bose. Shitiho shibi  
shose shose u nwigulu.

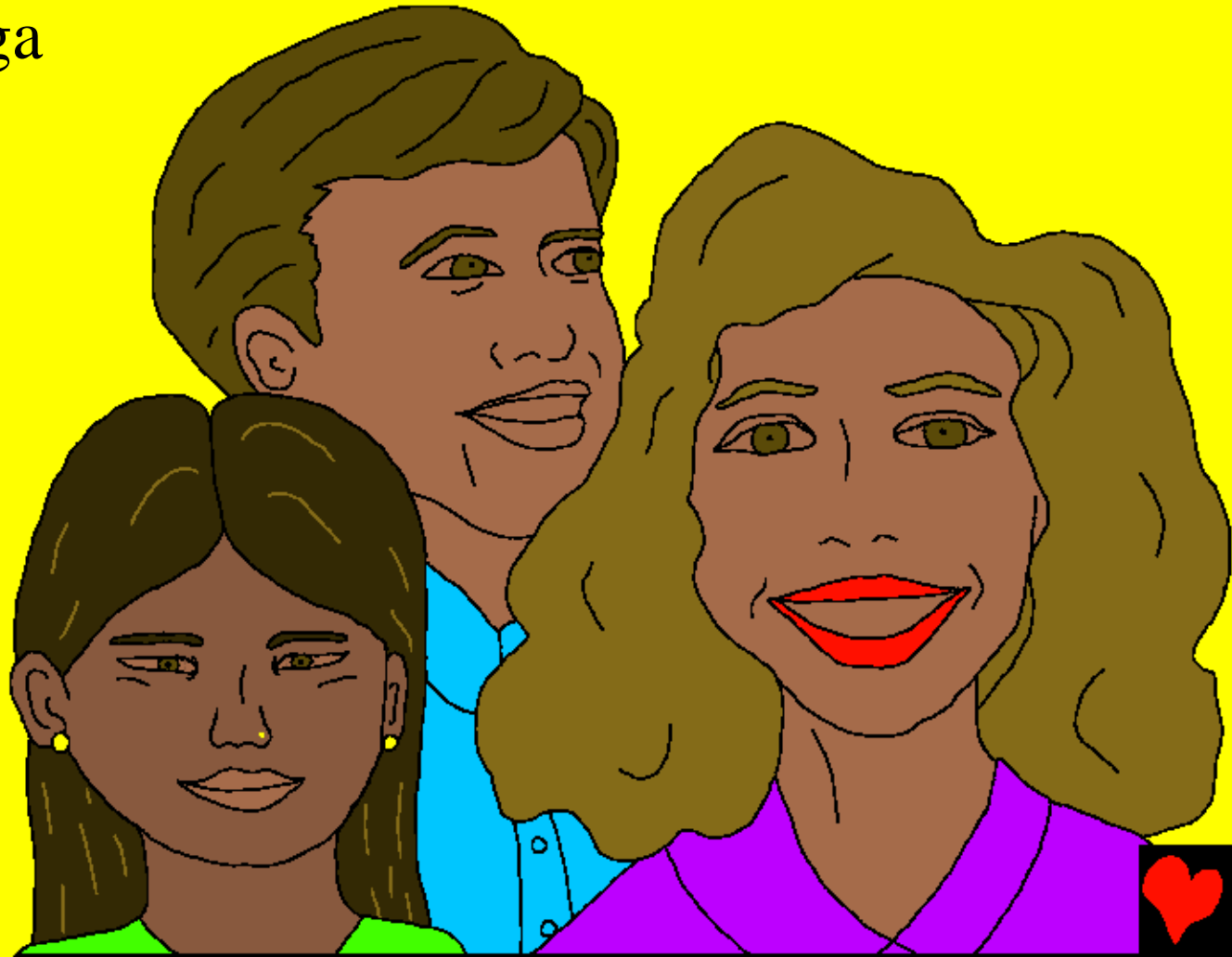


ſitiko ſhiſoji u nwigulu.  
Makanza gangi banhu ba  
Mulungu bakulilaga  
kunguno ya maluhu ga  
kikalile ka banhu.  
Unwigulu Mulungu  
alamala ſiſoji ſiſe.



Ng'wigulu kutiko kucha, banhu ba Mulungu balikala na  
Mulungu fiku jose na myaka yose na yose. Butiho  
busunduhazu bupina, na fililo busatu, siteho figukulu,  
gateho masuku.

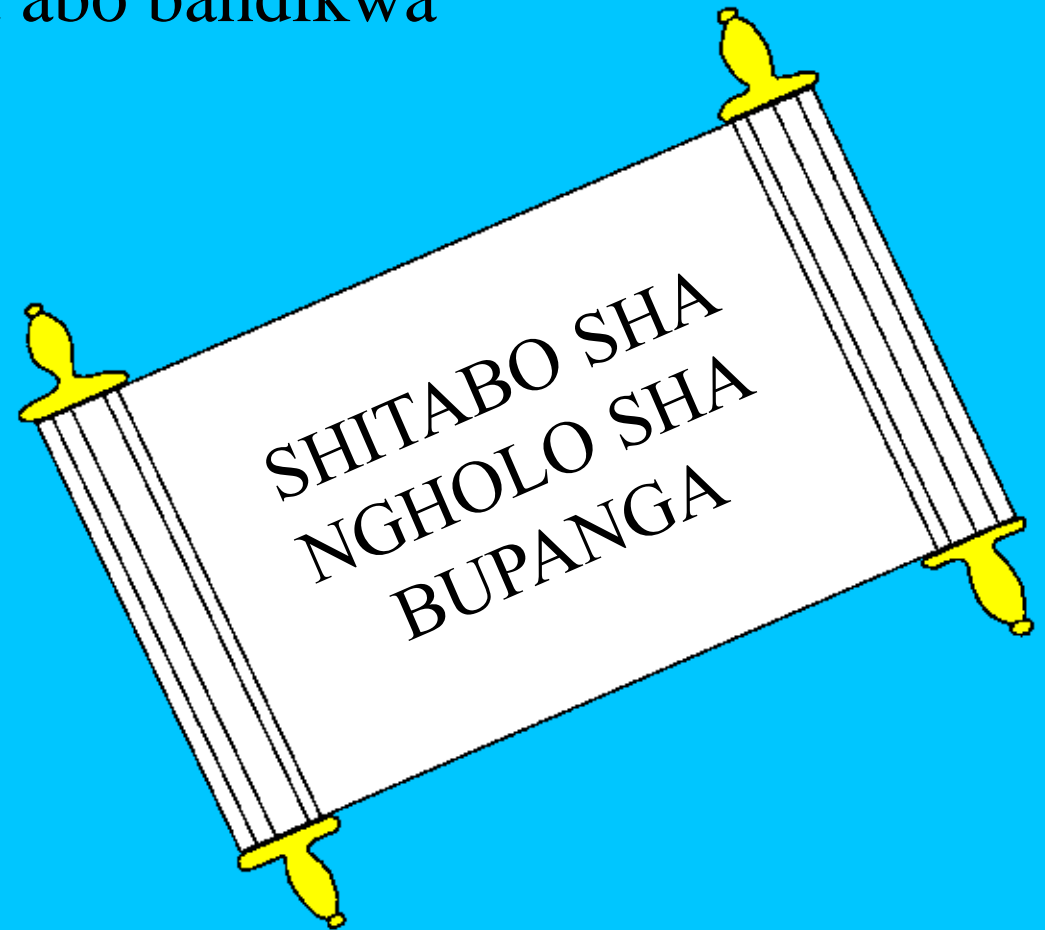
Buli nzwene aliyega  
kihamo na  
Mulungu.





Shawiza kukila pye, igulu lili lya bayanda, baniki na banu batale abo banzunya Yesu giki alimpija wabo na banyehelile Wei giti Seba wabo. ηwigulu shilimo shitabo filikwa fitabo sha ngholo shabupanga. Shokolile mina ga banhu. Umanile mina ga banhu abo bandikwa mo? Banhu bose abo ηwanzunya Yesu.

Mina ging'we galimo?



Mihayo ya nghalilo ya shandikwa shela sha Mulungu ya Igulu gali nwanukulo soga. “U moyo na ntolwa buhaya giki, ‘Nzugu’ Nanghwe uyo akwigwaga ahaye giki, ‘Nzugu’. Nanghwe uyo ali na nota ize, na uyo ose atogilwe atwale dalali minzi ga bupanga.”



Igulu, Numba soga ya Mulungu

Lugano kwinga mihayo ya Mulungu,  
Shandikwa Shela sha Mulungu

Ililonga mu

Yohana 14; 2 Bakorintho 5;  
Kukundulwa 4, 21, 22

“Bubitilo wa mihayo yako bukukwinha lumuli.”

Zaburi 119:130



Nghalikijo



Shandikwa shela shenishi shatutambulila mihayo ya kukamaja iya  
Mulungu uyo akatusumba na uyo alitutogwa bise tundebe Wei.

Seba adebile giki bise twahubya, isho akitanaga ſibi. Mhela ya  
ſibi yene kucha, aliyo Mulungu amtogilwe gete untuma űwanokwe  
helegeke, Yesu, kucha hansalaba, kulipa mhela ya ſibi shiűwe. Hangi  
Yesu uhimbuka na uja kukaya űwigulu! Ulu unzunya Yesu na  
ulomba kukolejiwa ſibi shako, akukulekeja! Akwiza akwikala  
mlibebe haha, na ukwigasha nang'we shiku jose na jose.

Ulu uzunije giki yeniyi ili nghana, hayaga kuli Mulungu:  
Bebe Yesu, nazunya giki uli Mulungu, na ukabi mhu uche kulwa  
ſibi shane, na ihaha ulimpanga hangi. Ndikulomba wize mbupanga  
wane na unilekeje ſibi shane, hambunu nadule kupandika bupanga  
bungi haha, na lushiku lumo na kubi kihamo na bebe shiku jose na jose.  
Nambilijage nakulamye bebe na kwikala mlibebe kiti űwanoko. Amina

Somaga shandikwa shela sha Mulungu na hoyoga na  
Mulungu buli lushiku. Yohana 3:16

