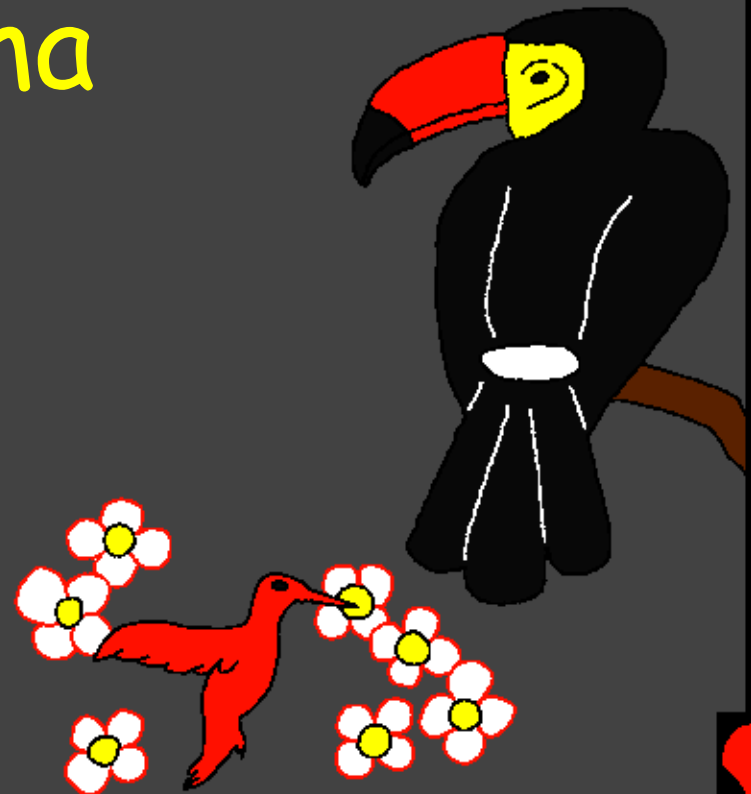
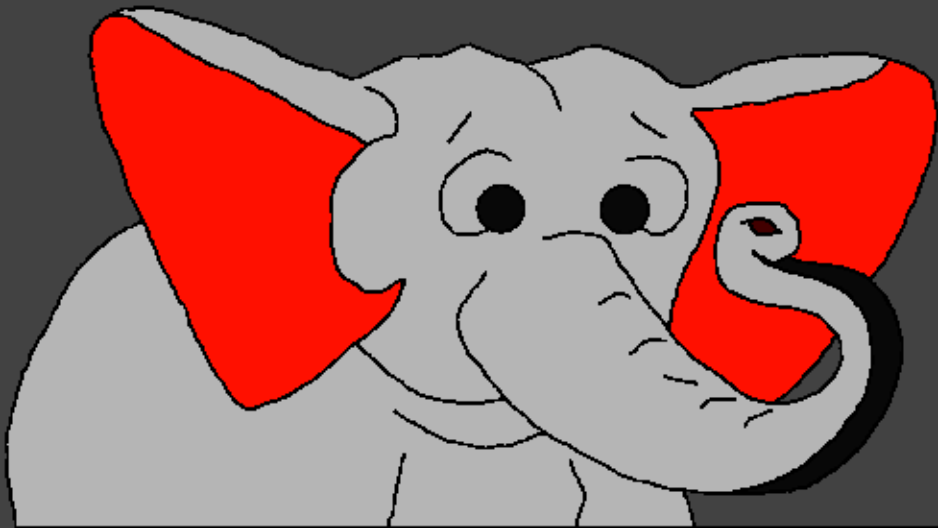


Bibila Sambu Na Bana
ku vanda na kati ya

Ntangu Nzambi
Kusalaka Bima
Nionso



Ku Sonikama Na: Edward Hughes

Ku Monisa Na: Byron Unger; Lazarus
Alastair Paterson

Ku Yidika Na: Bob Davies; Tammy S.

Ku Tendula Na: www.christian-translation.com

Basisa Na: Bible for Children
www.M1914.org

©2023 Bible for Children, Inc.

License: Nge kele na mfunu yaku batisa na mpila kaka ku
baka disolo yayi, na nionso yina nge kenda teka yo ve.



Nani kusalaka beto? Bibila, Ndinga ya Nzambi, songa inki mutindu muntu ku bandaka. Tangu ku lutaka, Nzambi ku salaka ntete bakala na nima ya pesaka yandi zina ya Adamu.



Nzambi ku basisaka Adamu na kati ya potopoto ya ntoto. Ntangu Nzambi ku pemaka luzingu na kati ya Adamu, yandi kwisaka na luzingu. Yandi kudi monaka na kati ya bilanga mosi ya kitoko na zina ya Eden.



Na ntwala Nzambi ku sala Adamu, Yandi salaka insi ya mvimba ya kitoko yaku fuluka na bima ya kitoko. Malembe malembe Nzambi kusalaka ba ngumba na bifulu ya kudisa ba niama, ...



... bintuntu ya nsudi ya mbote na ba inti ya nene, na ba ndeke ya mansala, ba manionsi, kulandana na ba ndenge ya mapapu na ya binzungulu ya nda. Na nionso Nzambi kusalaka kima nionso, kele na



kima nionso.



Na luyantiku, na ntwala
Nzambi kusala kima
nionso, kuvandaka na
kima ya nkaka ve, kaka
Nzambi. Bantu
ve, kifulu ve,
kima mpi ve.
Kima mosi ve.



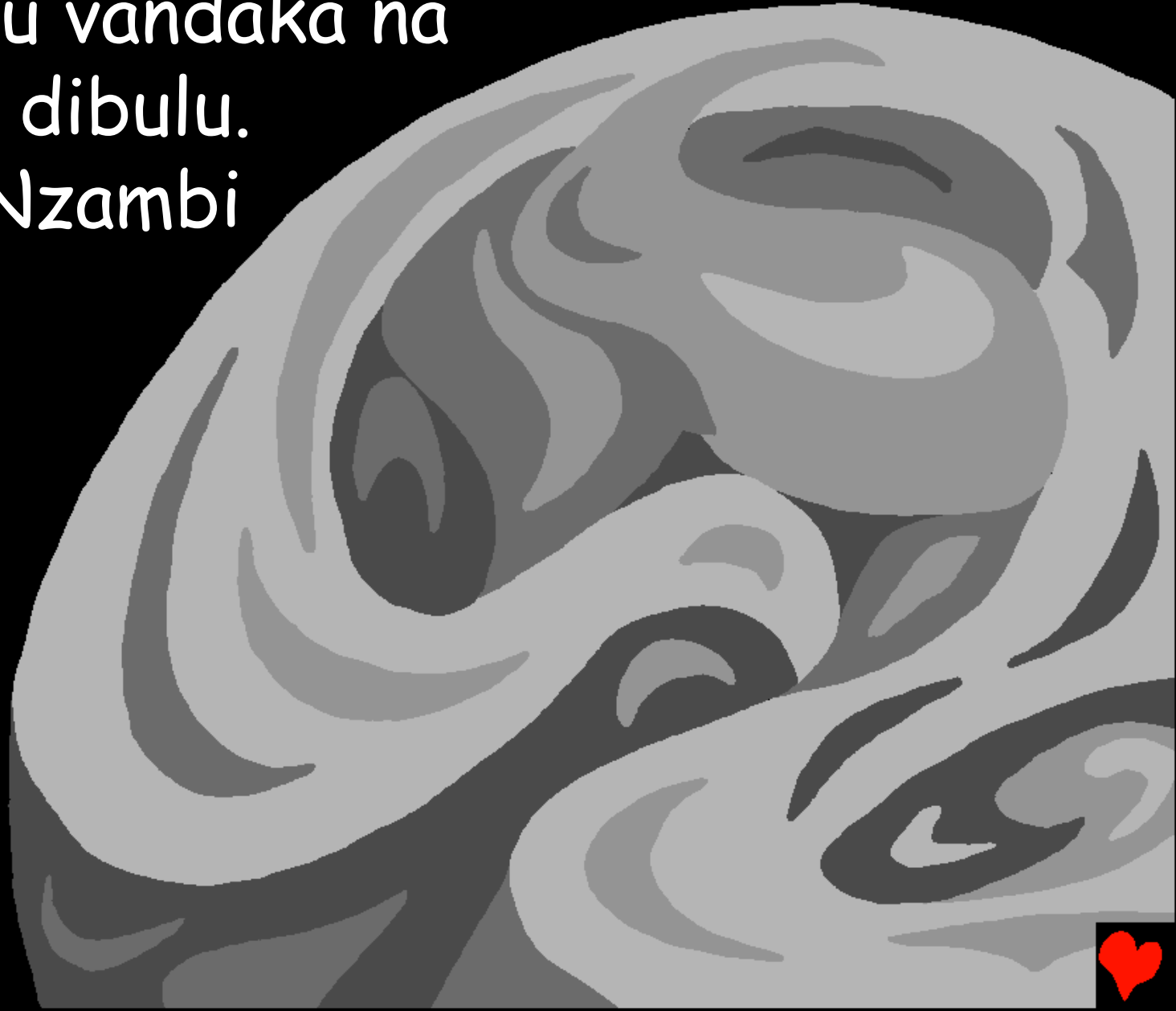
Mwinda ve, mpimpa
mpi ve. Kumata na ku
kita mpi ve. Mazono
ve, mbasi mpi ve.
Ku vanda kaka
Nzambi yandi
mosi, yandi kele
na luyantiku ve.
Na nima Nzambi salaka.



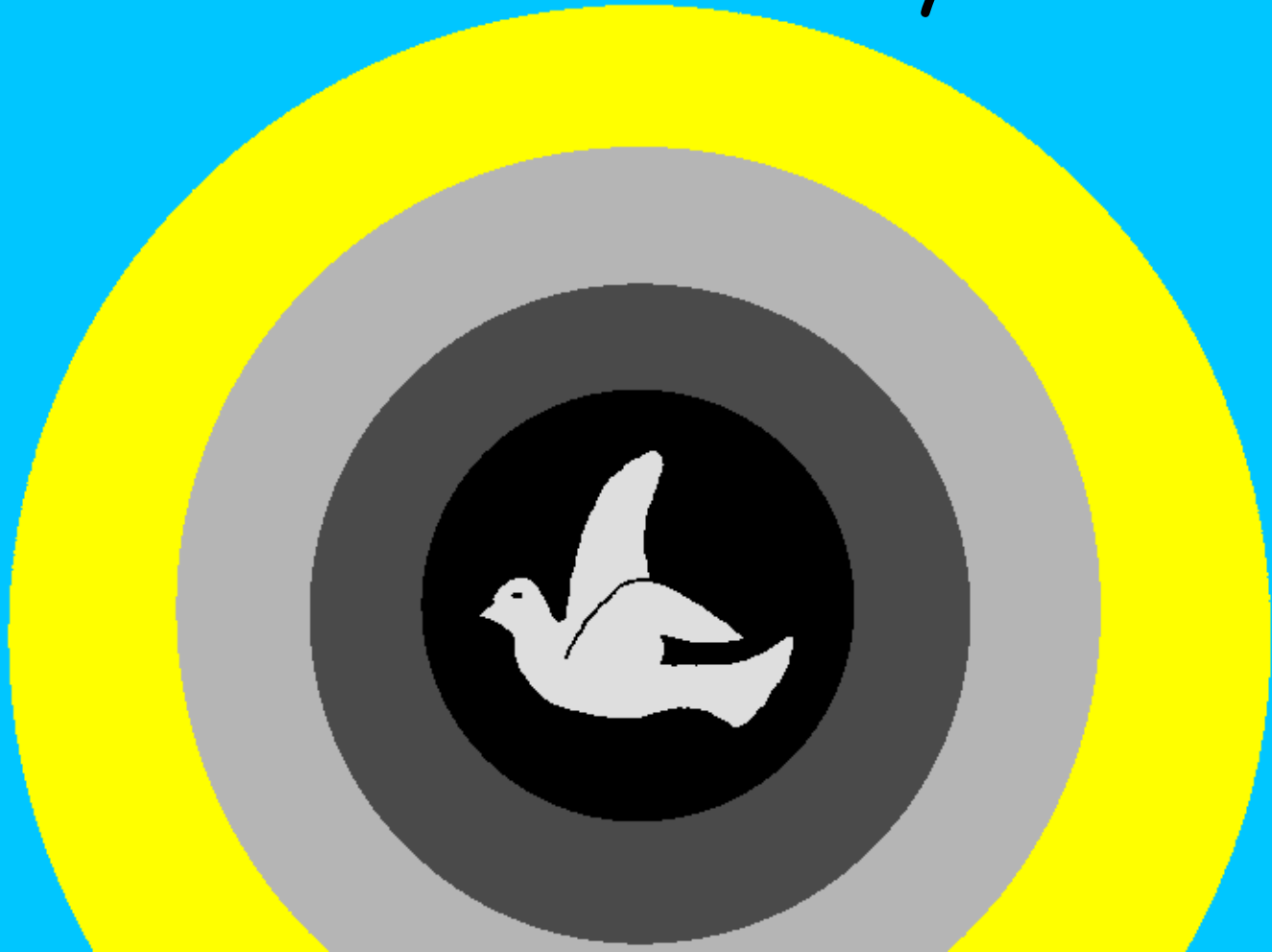
Na luyantiku, Nzambi
kusalaka zulu na ntoto.



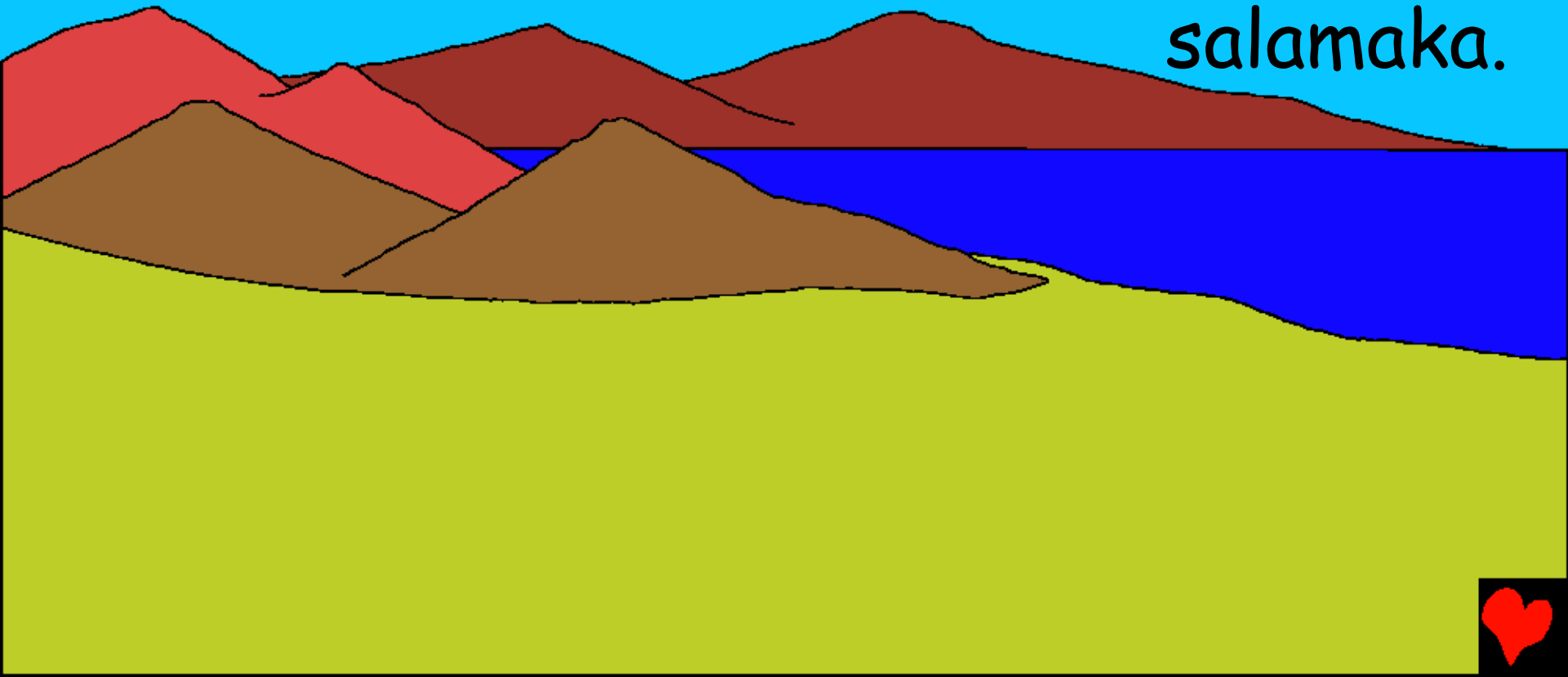
Ntoto kuvandaka na kifanisu ve.
Mpimpa ku vandaka na
ntwala ya dibulu.
Na nima Nzambi
tubaka.
"Mwinda
kuvanda."



Na nima mwindanda vandaka. Nzambi ku
bingaka mwindanda kilumbu, mpimpa yandi
bingaka yo mpimpa. Na nima nkokila na
suka kuvanda kilumbu ya ntete.



Na kilumbu y azole, Nzambi ku nataka
masa ya nzadi, nzadi mungwa na ya lake
na kati ya ndonga na insi ya zulu. Na
kilumbu ya tatu, Nzambi kutubaka, bika
ntoto yaku kawuka ku basika na nima yo
salamaka.



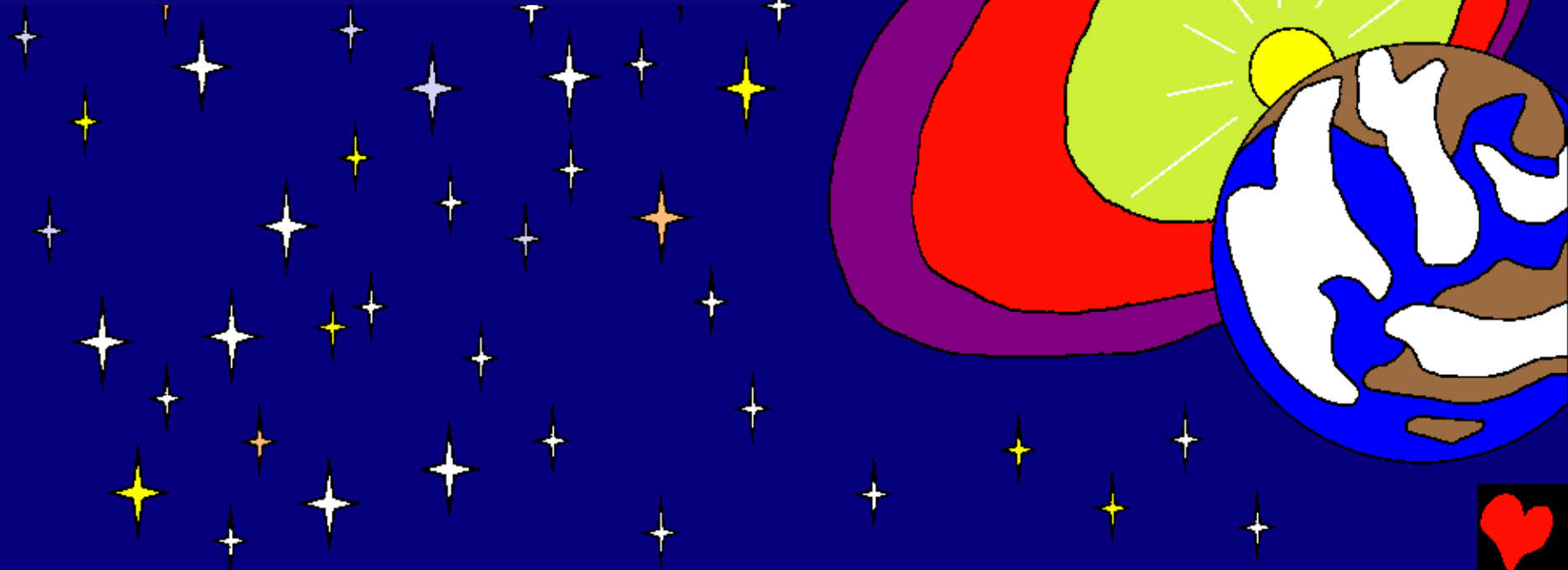
Nzambi ku lombaka mpi na ba matiti Ya
lupangu na bintuntu, na ba nti
na ku basika.
Bawu basika.



Na nima nkokila
na suka vandaka
kilumbu ya tatu.



Na nima Nzambi salaka ngonda, na nima
ntangu, na ba mbwetete ya
mingi yina ya, muntu lenda
ku tanga ve. Na nima nkokila
na suka kuvandaka
na kilumbu ya iya.



Kusalama ya nzadi,
ba mbisi na ba ndeke
kuvanda ya kulanda
na ngindu ya Nzambi.
Kilumbu ya tanu, Nzambi
salaka ba mbisi ya nene
na ya fioti. Nzambi
salaka mbisi ya mutindu
nionso sambu naku
fulusa masa mpi ba
ndeko sambu naku zing
ana mupepe ya mbote ya masa.



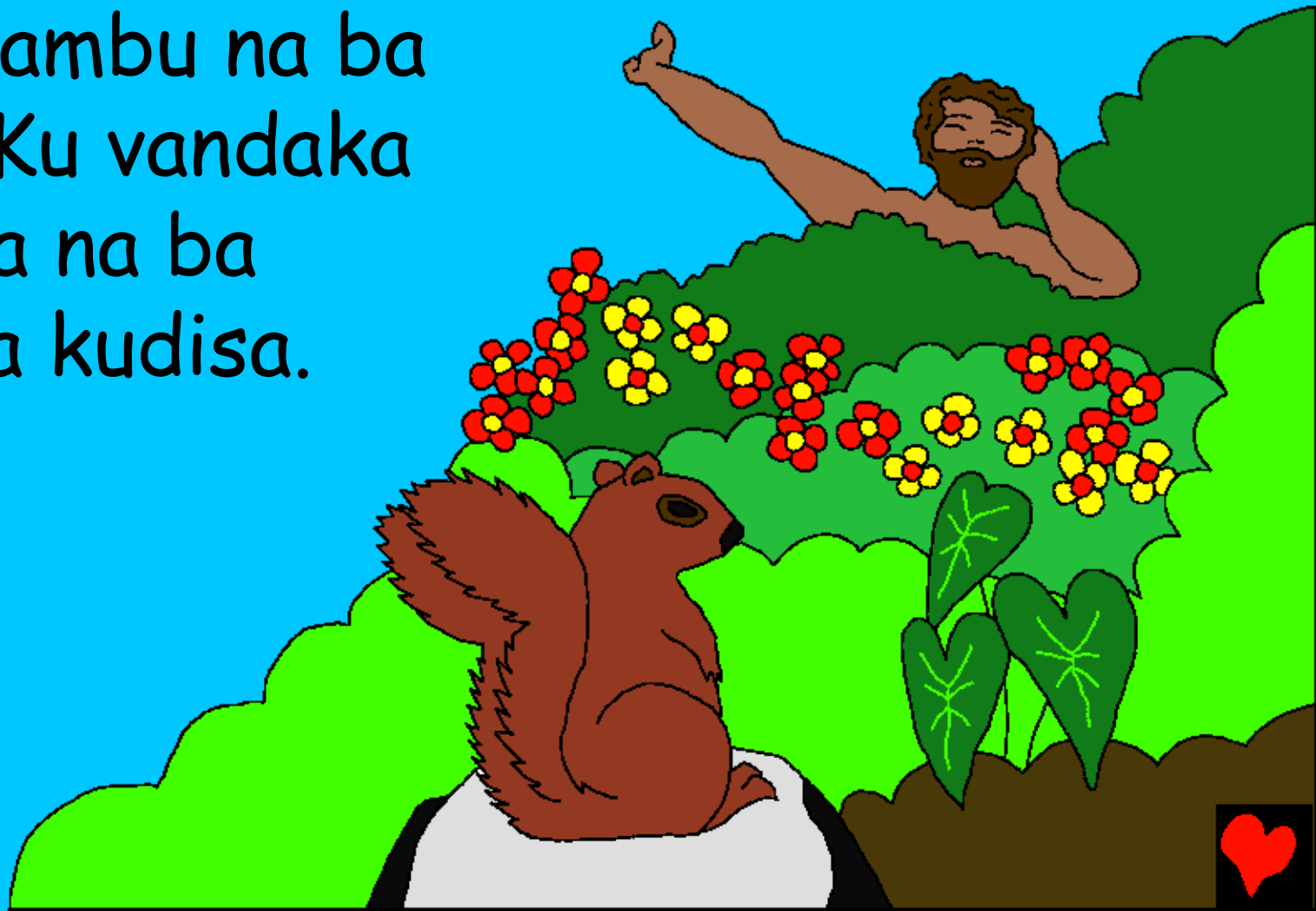
Na nima ya yina, Nzambi kutubaka
diaka. Yandi tubaka, bika ntoto ku
nata bantu ta zingaka kuna... ba
niama ya mpila nionso na ba nzizi,
na ba nioka ku kwisaka na luzingu.



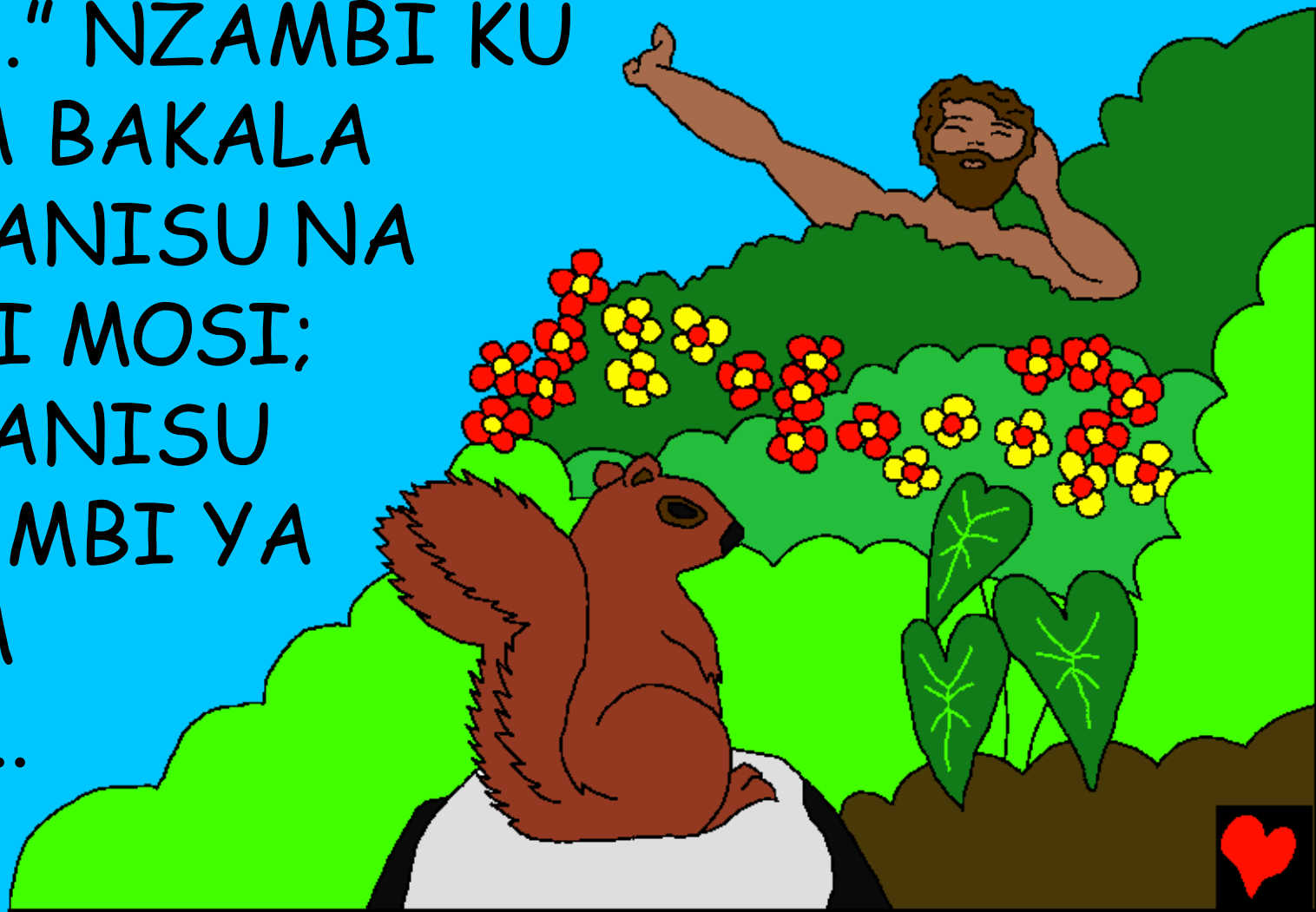
Ntoto ninganaka sambu na nzoko, ba
makaku na ba ngandu mpi vandaka,
ba pambu ya ntoto na ba giraffe ya
meno nda, kilumbu yina Nzambi
salaka niama yam pila nionso.



Nzambi kusalaka kima ya nkaka na kilumbu
ya sambanu- kima mosi na mpila nayo.
Bima nionso ku vandaka ntangu yayi
mfunu sambu na ba
bakala. Ku vandaka
na madia na ba
niama ya kudisa.



Na nima Nzambi kutubaka, "Bika beto sala bakala na kifanisu na beto. Bika yandi kuvanda Mfumu ya bima nionso nan toto." NZAMBI KU SALAKA BAKALA NA KIFANISU NA NYANDI MOSI; NA KIFANISU YA NZAMBI YA SALAKA YANDI...



Nzambi tubaka na
Adamu. "Dia yina
ya nge kele zola
na kati ya bilanga.
Kansi kudia ve
mbuma Ya nti ya
kuzaba ma mbote
na ma mbi. Kana
nge di ana nti
yina nge ta fwa."



Na nim, a Nzambi ku tuba, yo kele
mbote sambu nab akala na kubikala
yandi mosi. Mono ta sala
musungi na yandi. Nzambi
ku nataka ban deke nionso
na ba bears na Adamu.



Nzambi ku nataka Adam na mpongi ya ngolo, mpongi ya ngolo. Yandi katulaka mosi ya mpanzi ya bakala kele ladilaka, Nzambi kusala nkento na mupanzi ya Adamu. Nkento ya salamaka vandaka ya masongaka mupanzi ya Adamu.



Nzambi kusalaka kima nionso
na bilumbu sambanu. Na nima
Nzambi sampulaka kilumbu ya
nsambwadi na nima ya tulaka
yo kilumbu ya kupema.



Na kati ya bilanga ya Adamu
na Eva nkento na yandi kuvandaka
kitoko na kiese naku wila Nzambi.
Nzambi kuvandaka Mfumu
na bo, muntu vanda pesa
bo na nduku a bo.



Ntangu Nzambi Kusalaka Bima Nionso

Disolo mene katuka na ndinga ya Nzambi, Bibila,
yo monanaka na kati ya

Luyantiku 1-2

"Ku kota ya ndinga na nge kele pesa mwindanda."
Nkofo 119:130



Nsuka



Disolo ya bibila yayi kele tubila beto sambu na Nzambi ya kele mbote, ya mene salaka beto mpi nge zaba yandi.

Nzambi saba nde beto salaka bima yam bi yina beto kele bingaka masumu. Ndola sambu na disumu kele lufwa, Kansi nzambe kuzola nge mingi, yo yina ya ndi tindaka mwana na yandi mosi yesu, kufwa na ekuluzu mpi ku baka ndola sambu na masumu nge, na nima yesu mene vutuka na luzungu mpi mene vutuka na zulu. Kana nge kele kwikilaka na yesu mpi kana nge lomba yandi ndolula sambu na masumu na nge, yandi ta sala! Yandi ta kwisa zinga na nge mpi nge ta zing ana yandi ya libela.



Kana nge me kwikila nde kele ya masonga, tuba mpidiayi na Nzambi: Yesu mono me kwikila nde nge kele Nzambi, mpi nge mene kuma muntu na kufwa sambu na masumu na mono, mpi nge mene vutumuka. Kana mpila kele kota na luzingu na mono, mpi lolula masumu na mono, n anima mono kuma na luzingu yam pa, mpi kilumbu mosi mono vanda na nge sambu na libela. Sadisa mono na kum kwikila na nge mpi muzinga na nge bonso mwana Nzambi. Amen.

Tanga bibila mpi solula na Nzambi bilumbu nionso! Yoani 3:16

