

Bibila Sambu Na Bana
ku vanda na kati ya

Bikamwisi ya Yesu



Ku Sonikama Na: Edward Hughes

Ku Monisa Na: Byron Unger; Lazarus
Alastair Paterson

Ku Yidika Na: E. Frischbutter; Sarah S.

Ku Tendula Na: www.christian-translation.com

Basisa Na: Bible for Children
www.M1914.org

©2023 Bible for Children, Inc.

License: Nge kele na mfunu yaku batisa na mpila kaka ku
baka disolo yayi, na nionso yina nge kenda teka yo ve.



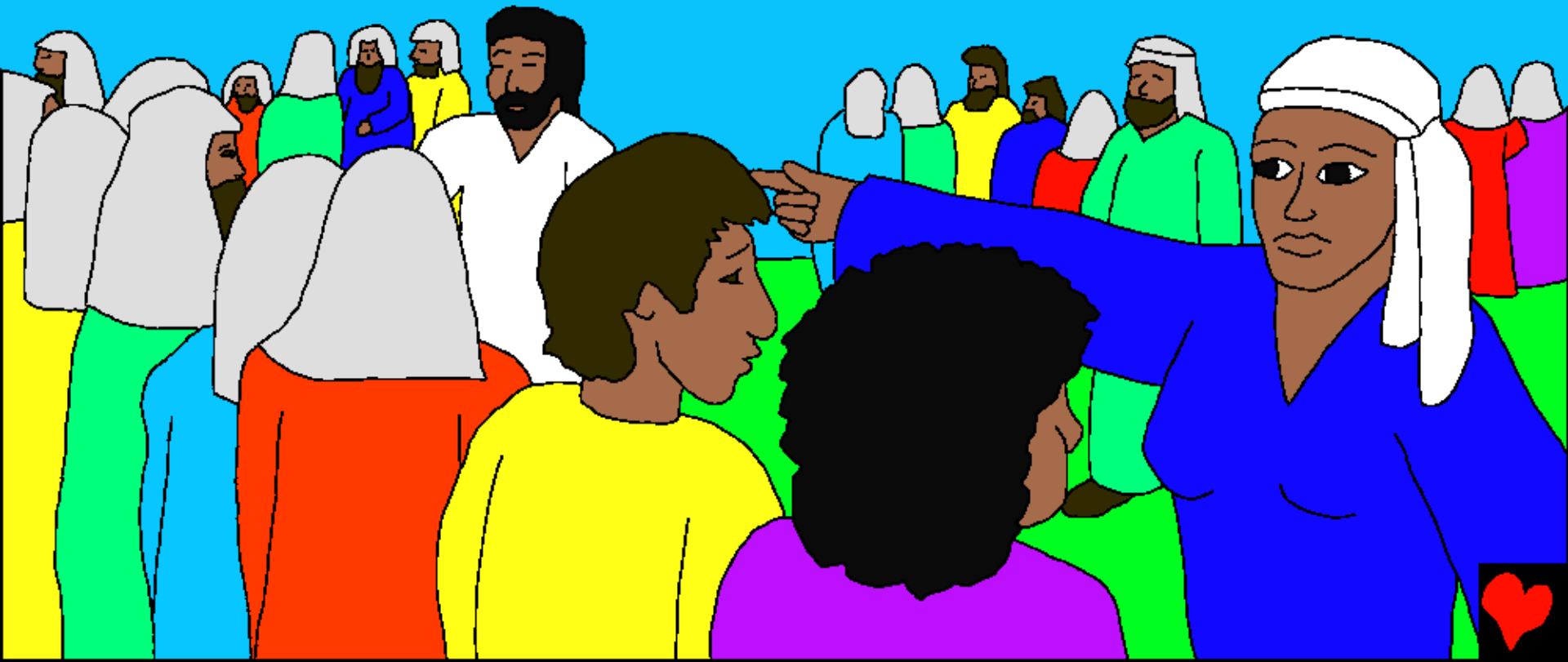
Yesu salaka bikamwisi ya mingi.
Bikamwisi kuvandaka mpila ya
kusonga na bantu nde yandi kele
mwana ya Nzambi ya mazonga.



Bikamwisi ya ntete kusalamaka na libala. Kuvandaka ve na malafu yaku kuka sambu na bantu nionso.



Mari, mama ya Yesu, songa yandi
sambu na dikambu, na nima yandi
songaka ba Sali na yandi na kusala
yina ya Yesu ta songa bo.



"Fulusa nzungu yayi na masa,"
Yesu tubaka. "Masa?" bo
lenda ku yula. Yinga, masa
nde Yesu lombaka.



Yesu songaka musali na ku baka na kati
ya nzungu na nima
yandi bika yo
bakala sambu na
ku meka yo. Masa
ku kumaka vinu.
Vinu ya
mbote! Vinu
ya mbote!



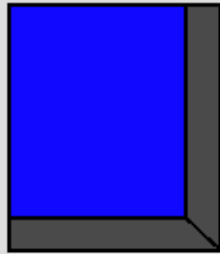
Ba Sali yitukaka.
Yesu mene kumisa
masa vinu. Kaka
Nzambi lenda sala
bikamwisi yina.



Yesu ku salaka bikamwisi ya nkaka,
nkokila mosi yandi kwendaka nan zo
ya pierre na ba longoki na yandi,
bokilo ya pierre vandaka
kubela, yandi
vandaka na tia
mingi na nitu.



Yesu kusimbaka diboko ya mbefo,
na mbala mosi yandi belukaka. Yandi
telemaka sambu nak u sadila Yesu
na ba longoki na yandi.



Na nkokila yina bwala vimba
ku fulukaka na
kielo, ba mbefo
kwisa: bifwa
meso, baba,
kiwulu, bantu
ya kubukana.



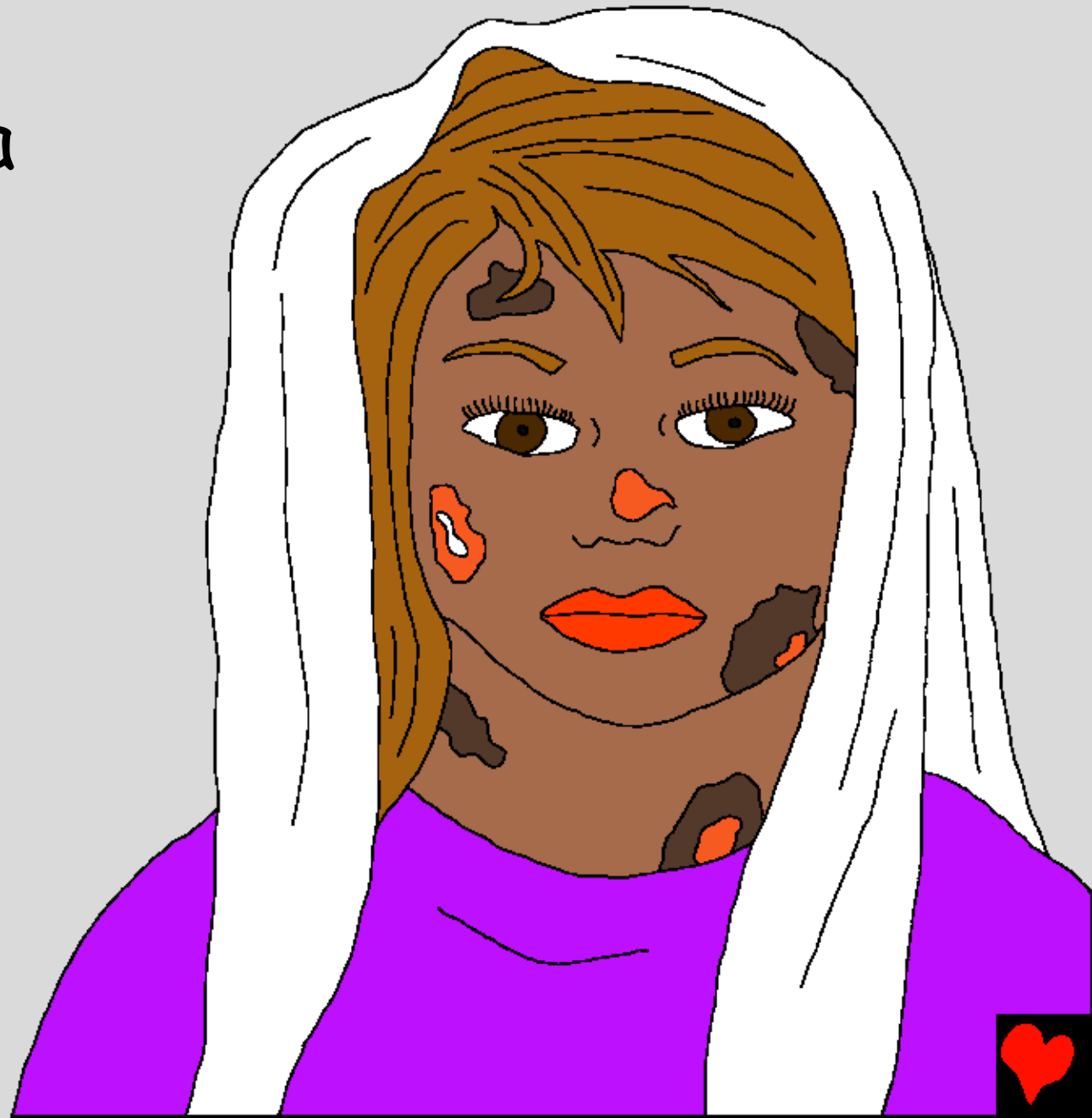
Na bantu ya vandaka na ba
mpeve ya mbi na
nitu pusanaka
pembeni ya Yesu.
Lendaka sunga
bantu mingi?



Yesu, mwana Nzambi lenda sunga, Yesu sungaka ba yina nionso kwisaka na yendi belukaka, bantu ya kuwumelaka na ba nti na maboko lenda baka ntinu, ku pumbuka, ku tambula.



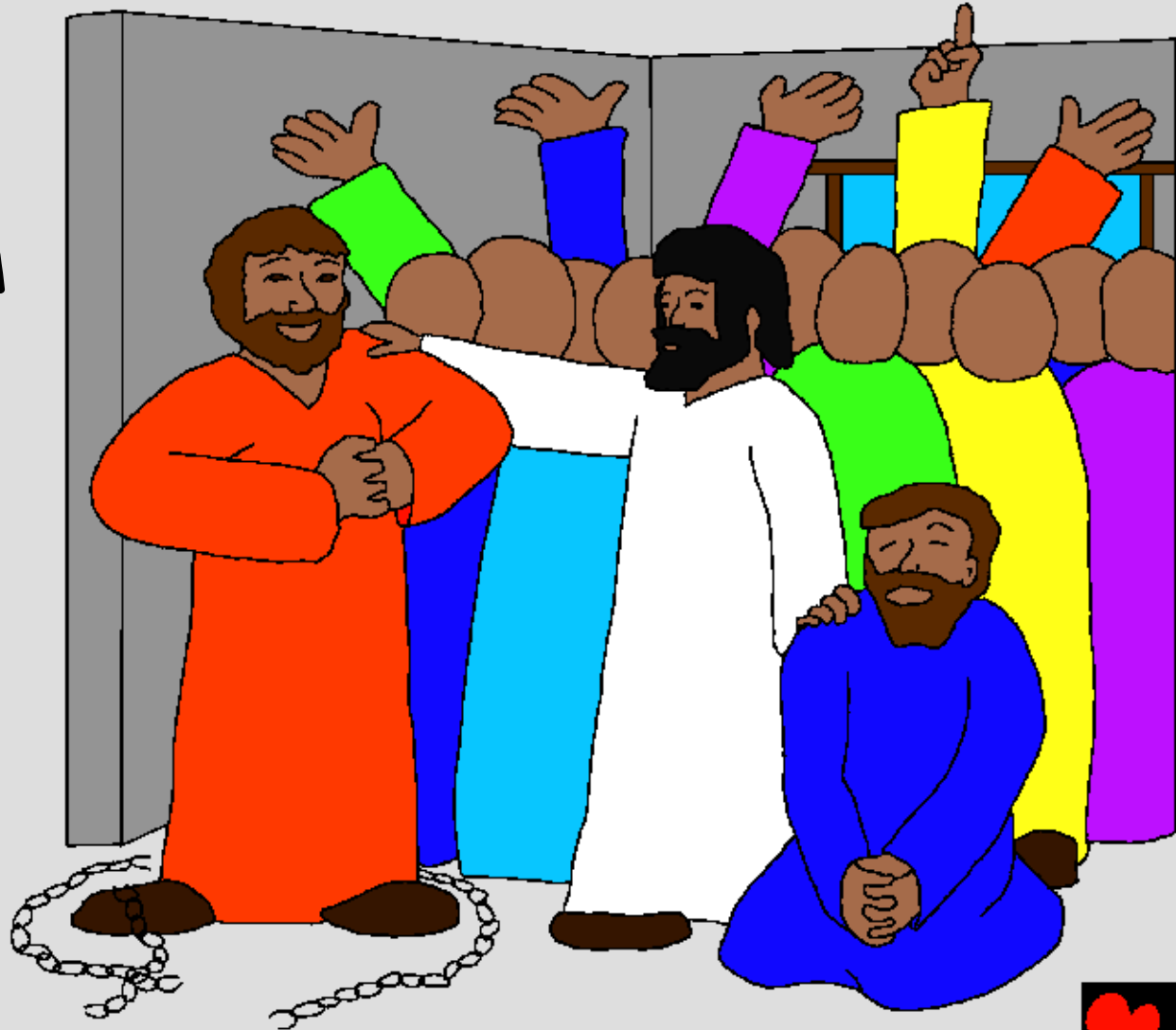
Ba nkaka
kwisaka na
lepre na
maboko.



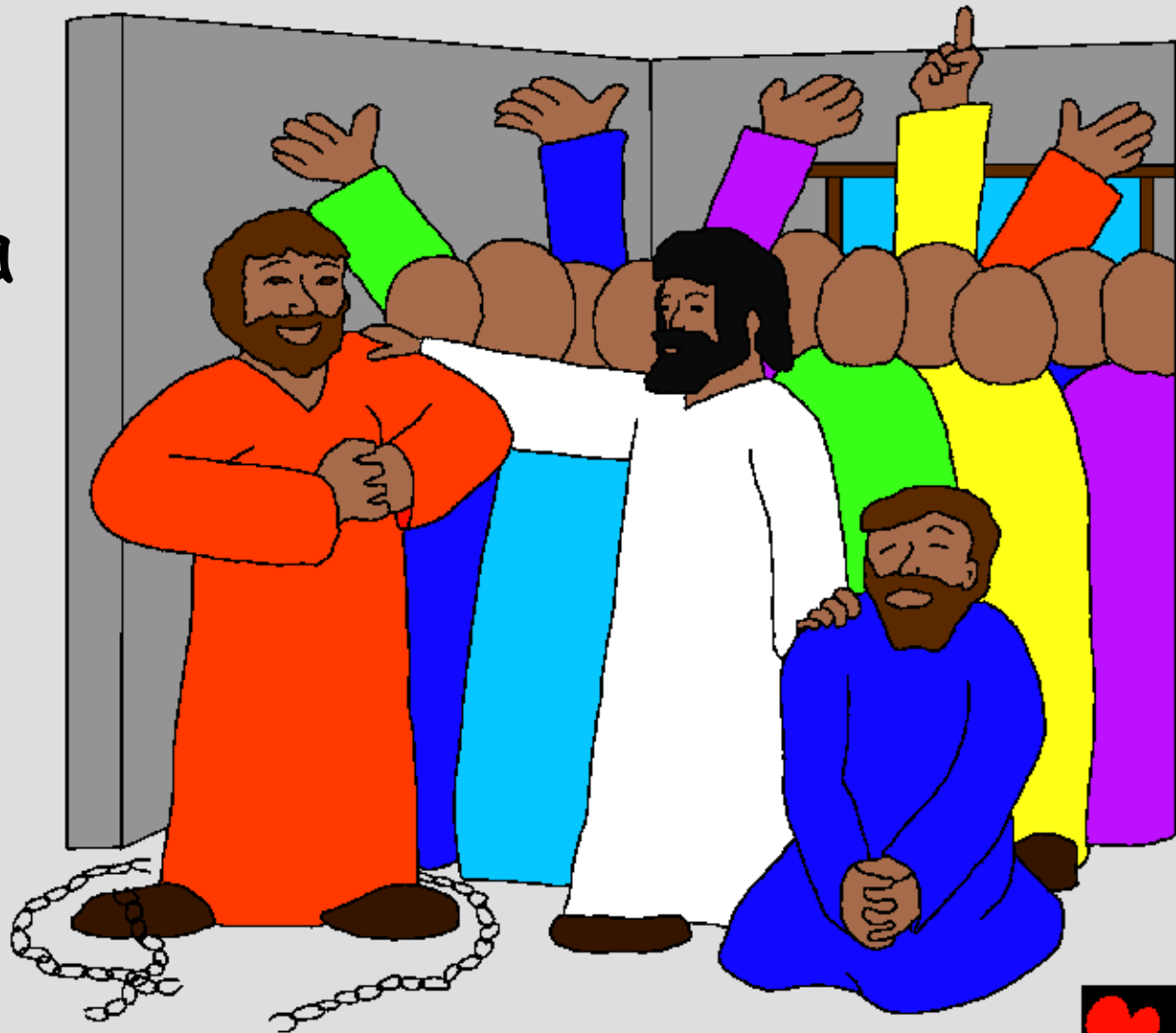
Bo belukaka mpi
bo sukwamaka
na Yesu.



Ba bakala na
ba nkento ya
vandaka ku
tungisama na
ba mpeve yam
bi lutaka na
ntwala Yesu.



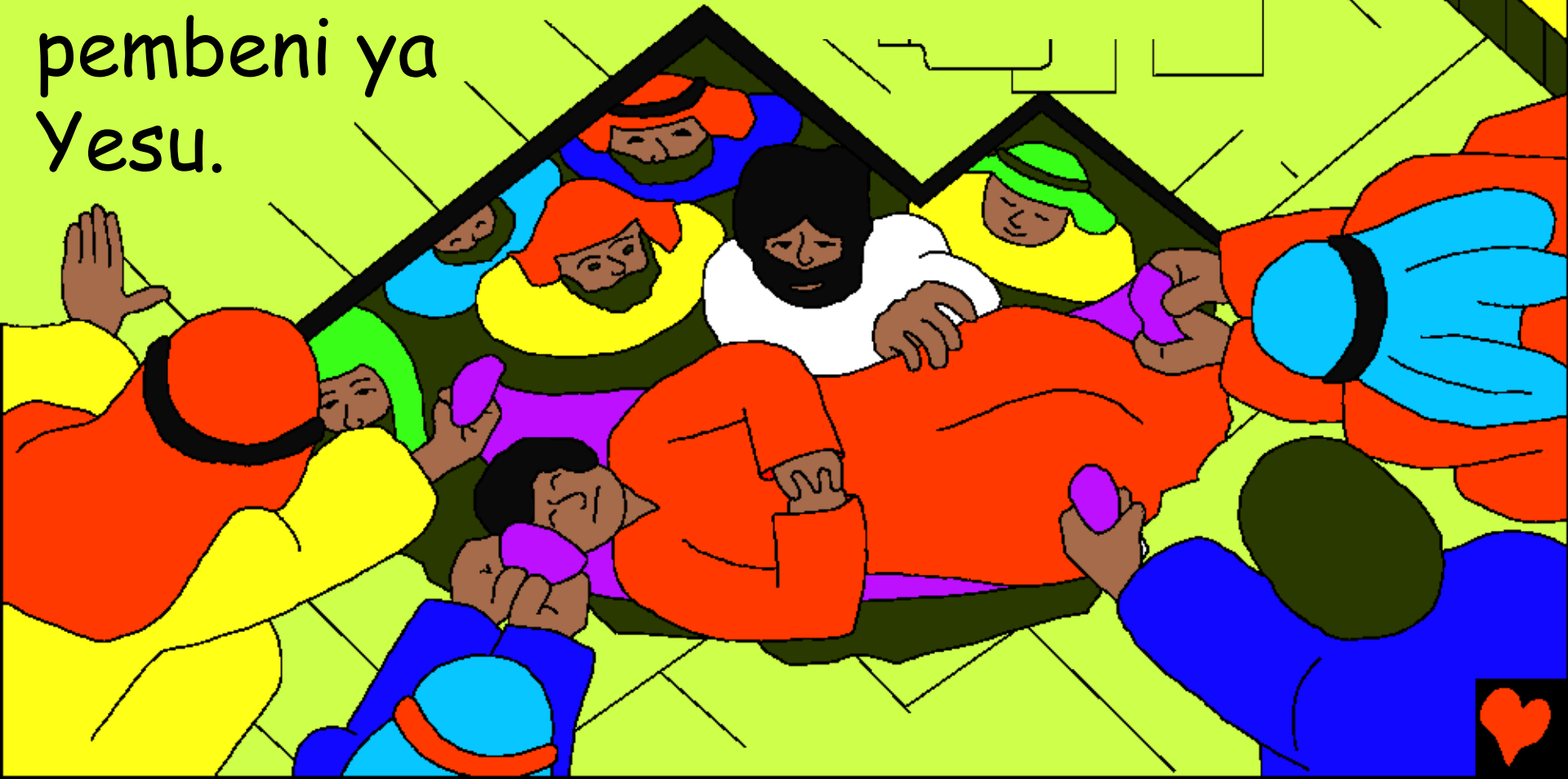
Nzambi songaka ba mpeve yam bi na
kubasika na ba nitu na bo, ye bo
basikaka, batu
ya kuvanda
banga na mawa
kumaka na
kiese na bima.



Na nima ya bantu, bantu iya zolaka ku
sunga ba nduku na bo na ku kutana na
Yesu, kansi bo vandaka na mpila ve ya ku
kutana na Yesu. IOnki bo lendaka sala?



Ku nata ba mbefo na zulu ya
nzo, ba nduku iya ya mbote
panzaka zulu ya nzo sambu nak
u kitisa ba mbefo bo kumaka
pembeni ya
Yesu.



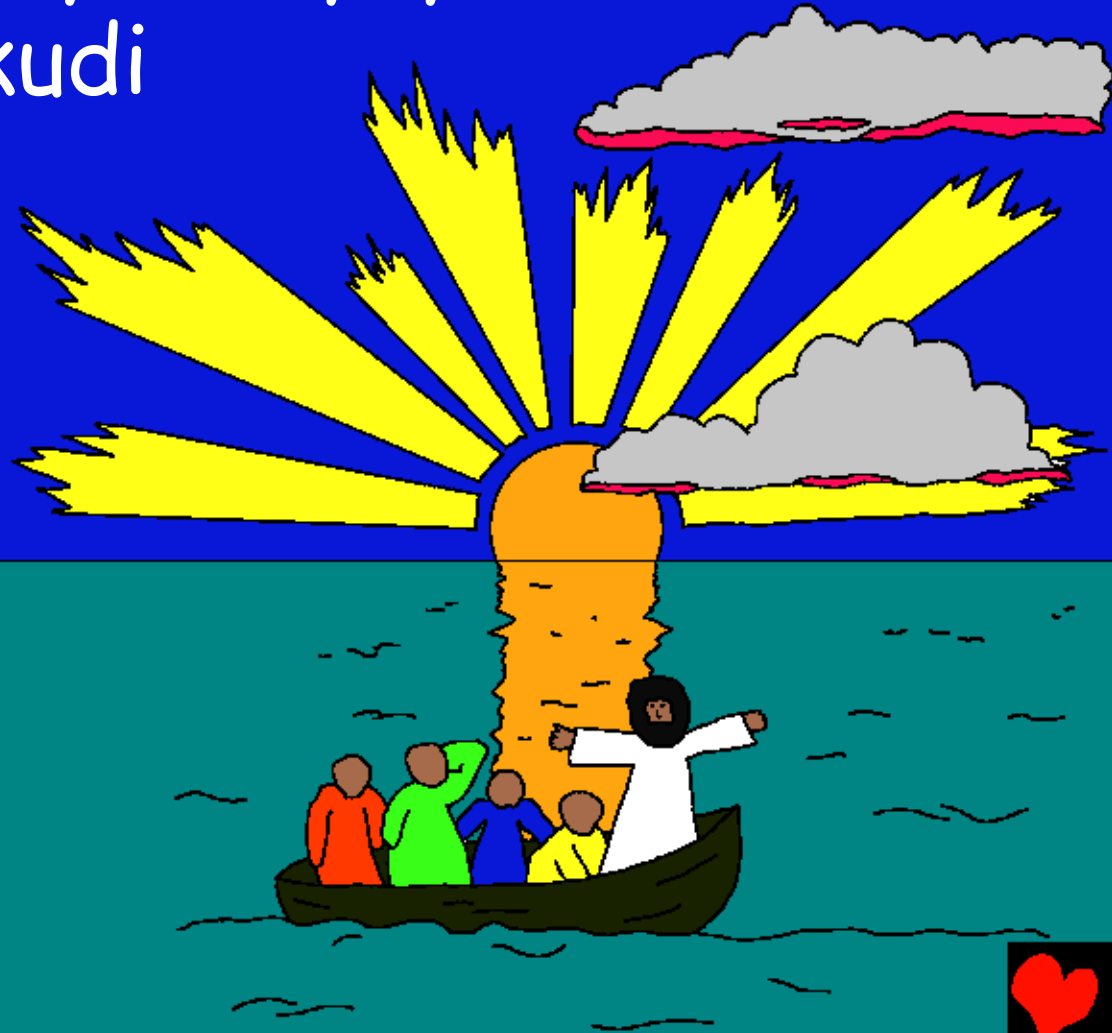
Yesu ku mona nde ba nduku iya ku
vandaka na lukwikilu,
yandi songa na ba
mbefo: masumu
na nge mene
lolulama, baka
mbeto na nge
tambula.
Muntu ku
telemaka mbote
na ngolo yes
uku belusaka yandi.



Na nima ntangu fioti, Yesu ku vandaka
na ba ntumwa na kati ya
masuwa, mupepe ya
ngolo ku ningisaka masa,
Yesu ku lalaka, ba ntumwa
na kubanga telemisaka
yandi. "Yesu bikisa
beto, beto
kele zinda!"



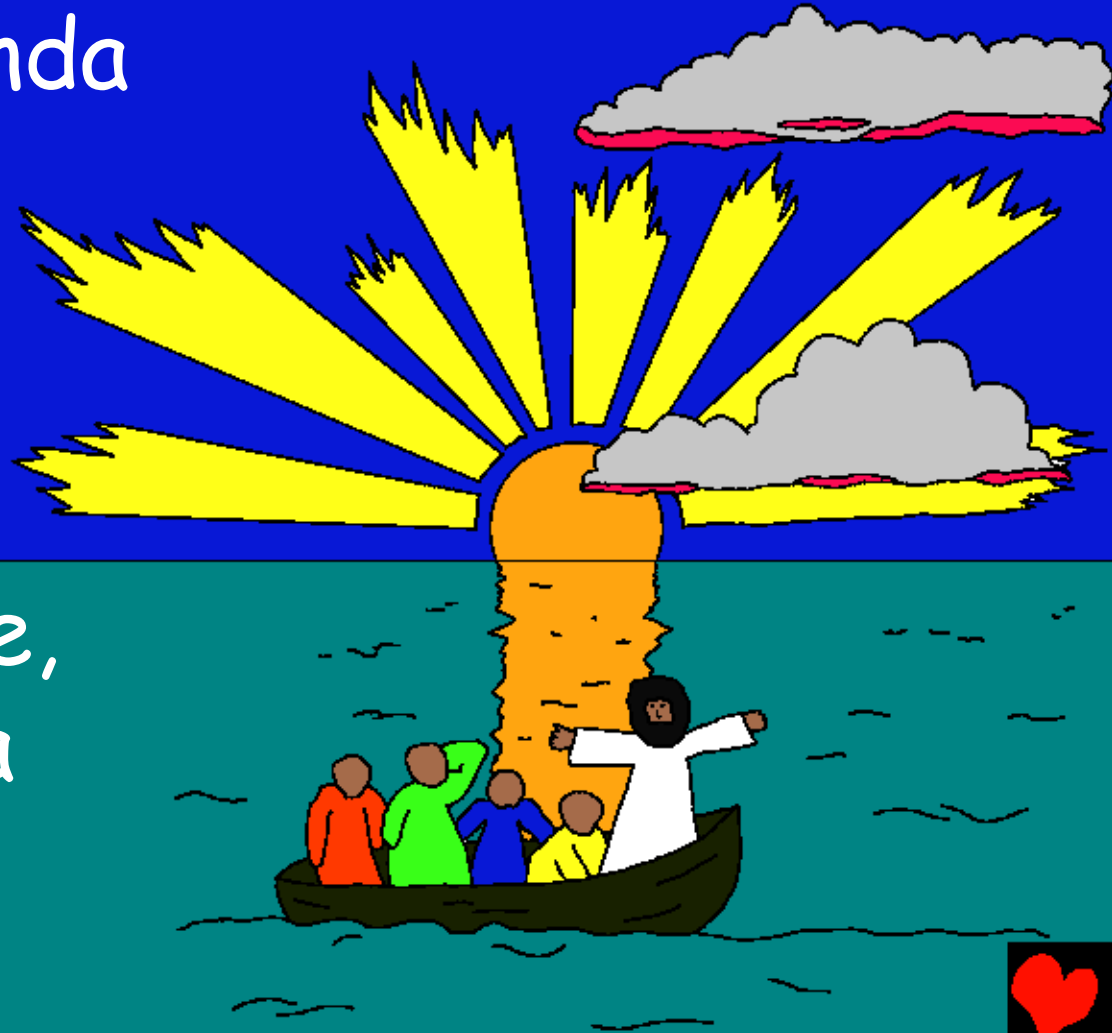
"Bika makelele," Yesu kele songa mupepe, mbala mosi masa ku kuma pima. "Inki muntu yandi yayi?" ba ntumwa kele kudi yula. Na mupepe ne masa kele wila yandi.



Bo vandaka na lukwikilu nde Yesu kele
mwana ya Nzambi sambu bikamwisi na
yandi vanda songisa nkembo na yandi.

Ba ntumwa ku vanda
zaba ve, kansi bo
zola mona Yesu
kusala diaka ba

bikamwisi ya nene,
nay o yandi vanda
sadila Nzambi na
kati ya bantu.



Bikamwisi ya Yesu

Disolo mene katuka na ndinga ya Nzambi, Bibila,
yo monanaka na kati ya

Matayo 8-9; Malako 1-2, 4; Luka 4, 8; Yoani 2

"Ku kota ya ndinga na nge kele pesa mwinda."
Nkofo 119:130



Nsuka



Disolo ya bibila yayi kele tubila beto sambu na Nzambi ya kele mbote, ya mene salaka beto mpi nge zaba yandi.

Nzambi saba nde beto salaka bima yam bi yina beto kele bingaka masumu. Ndola sambu na disumu kele lufwa, Kansi nzambe kuzola nge mingi, yo yina ya ndi tindaka mwana na yandi mosi yesu, kufwa na ekuluzu mpi ku baka ndola sambu na masumu nge, na nima yesu mene vutuka na luzungu mpi mene vutuka na zulu. Kana nge kele kwikilaka na yesu mpi kana nge lomba yandi ndolula sambu na masumu na nge, yandi ta sala! Yandi ta kwisa zinga na nge mpi nge ta zing ana yandi ya libela.



Kana nge me kwikila nde kele ya masonga, tuba mpidiayi na Nzambi: Yesu mono me kwikila nde nge kele Nzambi, mpi nge mene kuma muntu na kufwa sambu na masumu na mono, mpi nge mene vutumuka. Kana mpila kele kota na luzingu na mono, mpi lolula masumu na mono, n anima mono kuma na luzingu yam pa, mpi kilumbu mosi mono vanda na nge sambu na libela. Sadisa mono na kum kwikila na nge mpi muzinga na nge bonso mwana Nzambi. Amen.

Tanga bibila mpi solula na Nzambi bilumbu nionso! Yoani 3:16

