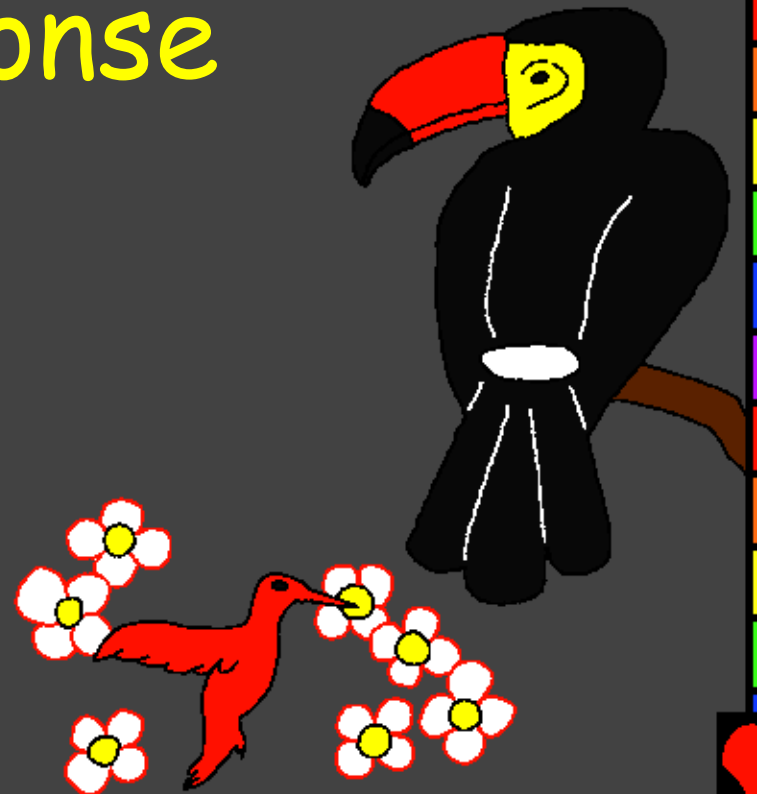
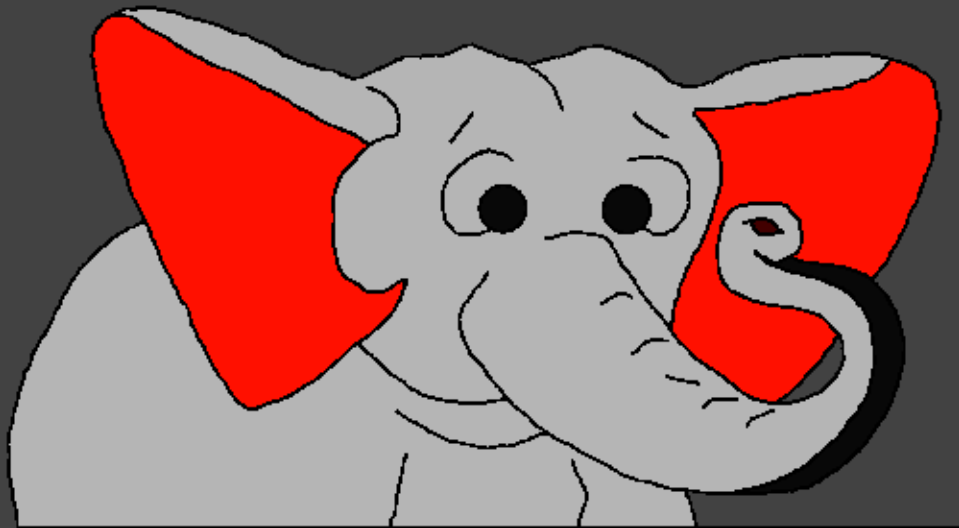


Baibolo/Icipingo Ca Yabana Abanini  
Abakomilatelako

Ilyo Lesa  
Alikubumba Fyonse



Yalembelwe Na Ba: Edward Hughes

Ukulangilila Na Ba: Byron Unger; Lazarus  
Alastair Paterson

Ekobofeshiwa Na Ba: Bob Davies; Tammy S.

Ukupililwa Muci lala Na Ba:  
[www.christian-translation.com](http://www.christian-translation.com)

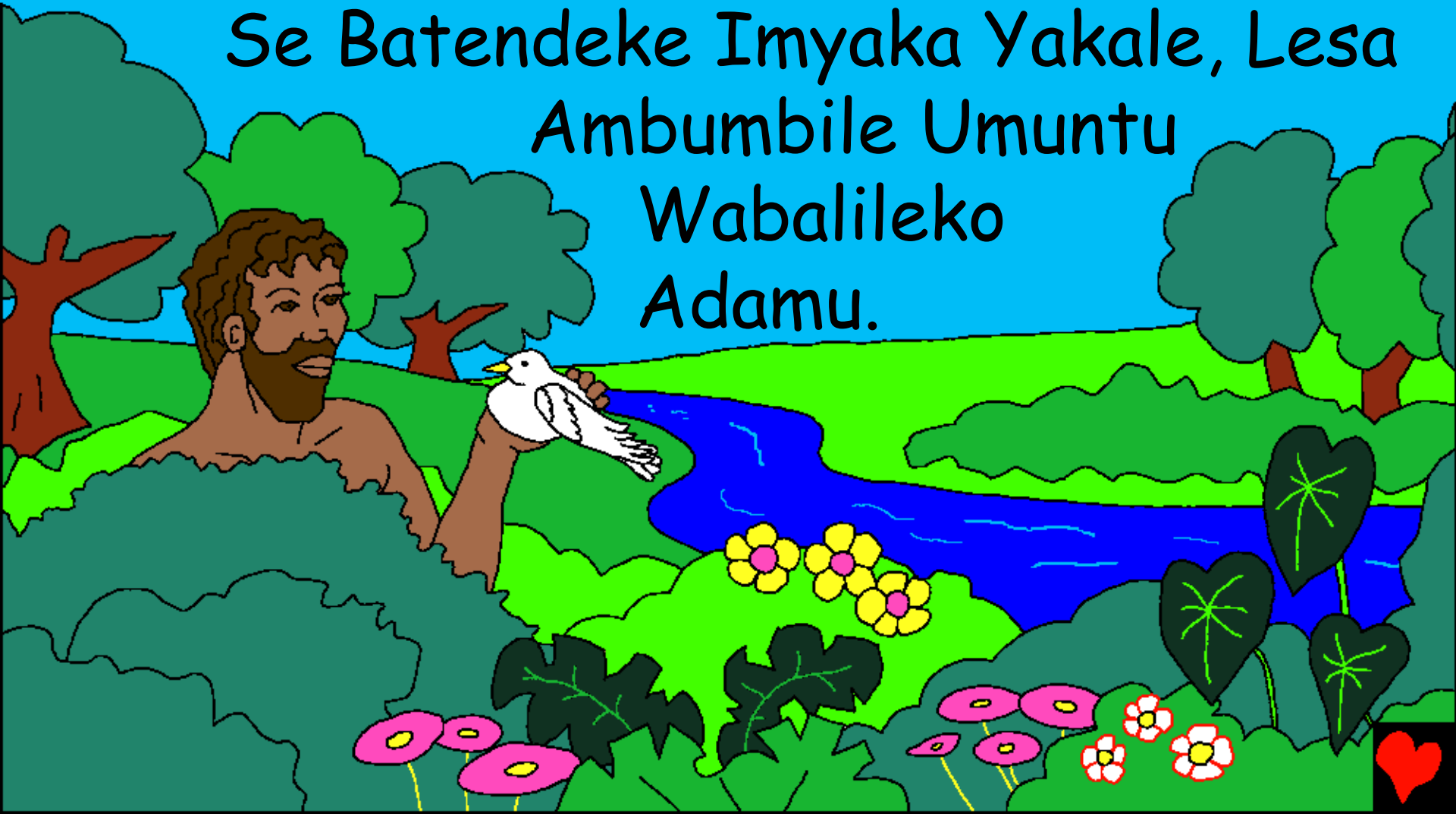
Yapekanishiwe Na Ba: Bible for Children  
[www.M1914.org](http://www.M1914.org)

©2021 Bible for Children, Inc.

Ulusa: Insambu Bofya Elyashi Ili Lukoso.



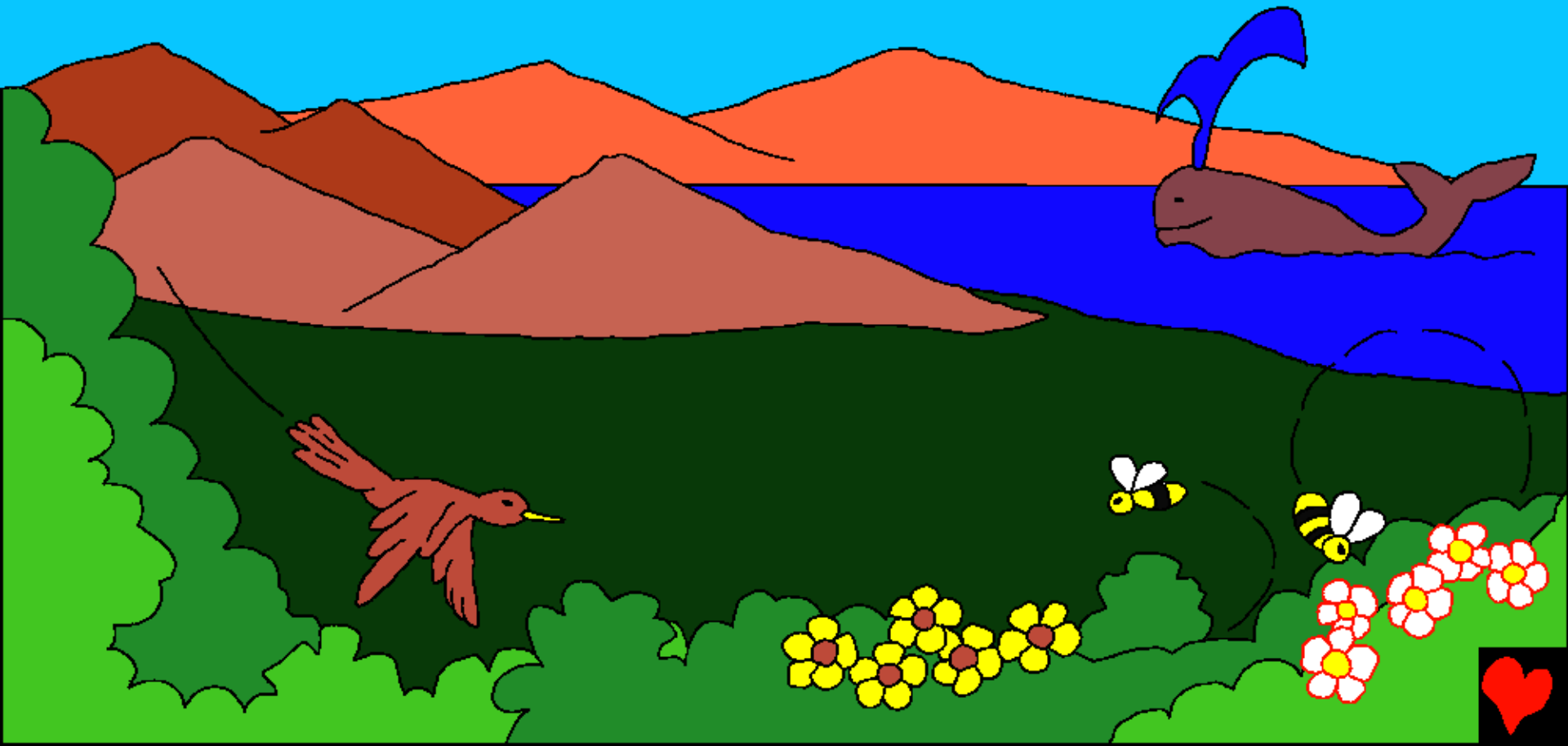
Mba niani Uwalikutububile Ifwe? Na  
Baibolo ine li Ishiwi Lya Kwa Lesa,  
Lilabila Ifyo Abantu/Atemwa Abantu  
Se Batendeke Imyaka Yakale, Lesa  
Ambumbile Umuntu  
Wabalileko  
Adamu.



Lesa Abumbile Adamu Ukufuma  
Ukulukungu/Atemwa Iloba, Iloba  
Lyakwisonde. Elyo Amaputilemo Umweo/  
Umupu Muli Adamu, Adamu  
Ukupema. Ishile  
Sokola Ne Ibala  
Elyo Beta Edeni.



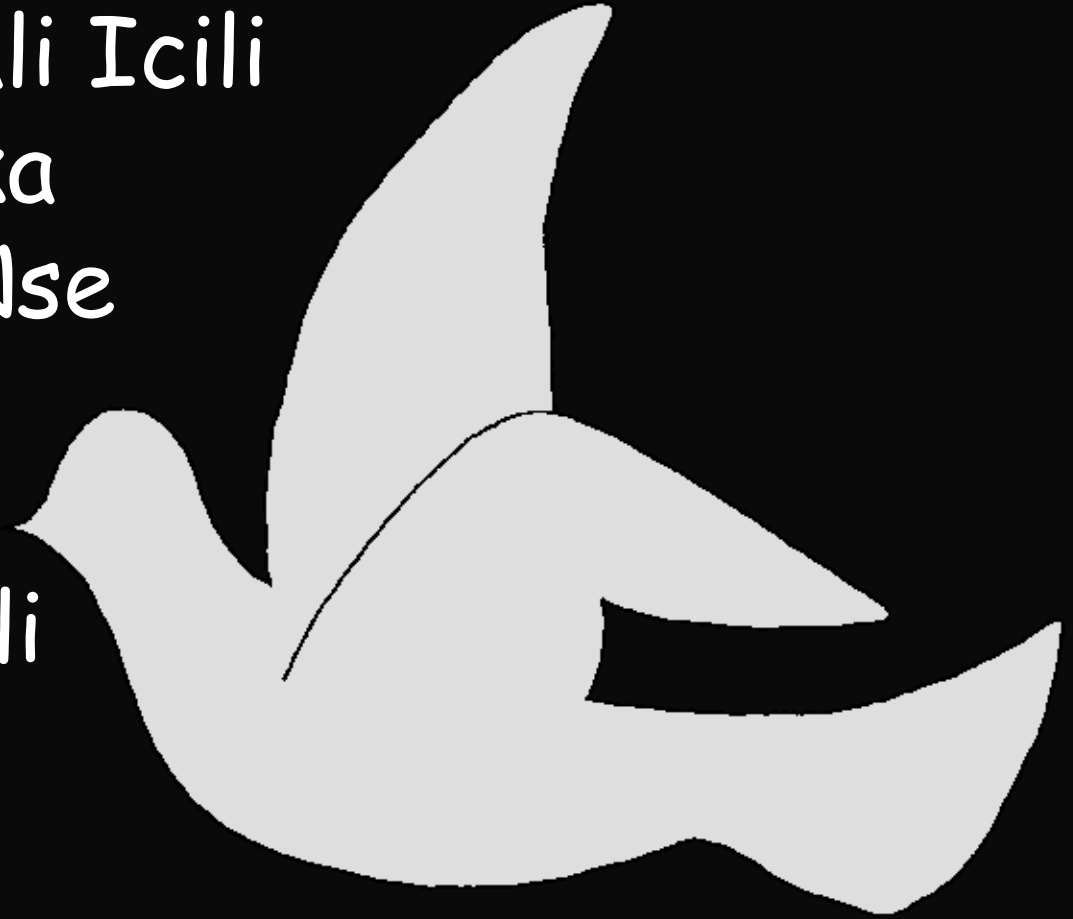
Elyo Lesa Takubumba Adamu, Ali Bumbile  
Isonde Alisweshe Nefitu Ifiweme/  
Atemwa Ifya Bune Lokoso, Mulibuca  
Buce Lesa Abumbile Impili, Amalungu, ...



... Amaluba Aya Cena Icisuma Emiti  
Yalepalukoso, Inguni Ishimu Isha Ciunda,  
Ifi Sabi Ifikulu Sana Inkola Iyatelela.  
Mucine, Lesa Abumbile Fyonse Kulia  
Noku Fyonse.



Mukutendeka Fye, Elyo Lesa Tala Bumba  
Icili Conse Takwali Icili  
Conse Lesa Ali Eka  
Takwali Abantu Nse  
Lukoso Nelo  
Takwali Conse  
No lubuto/Takwali  
Nelo Mfinfi,  
Takwali Peulo Na  
Panshi. Takwali Mailo. Kwali Fye Lesa  
Takwata Tendekelo. Lelo Lesa Alicita.

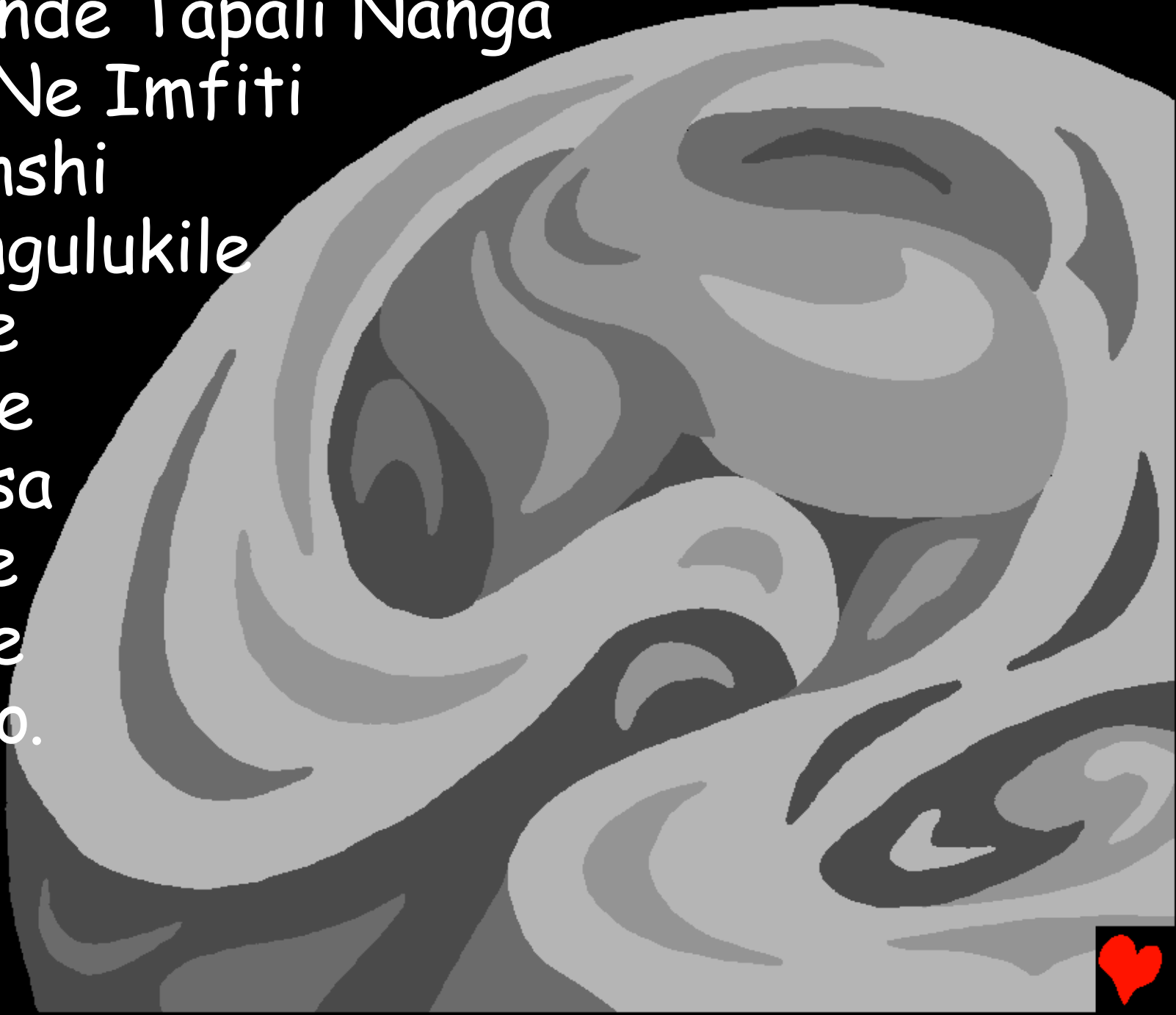


Mukutendeka, Lesa Alilengele  
Umulu Ne Sonde.

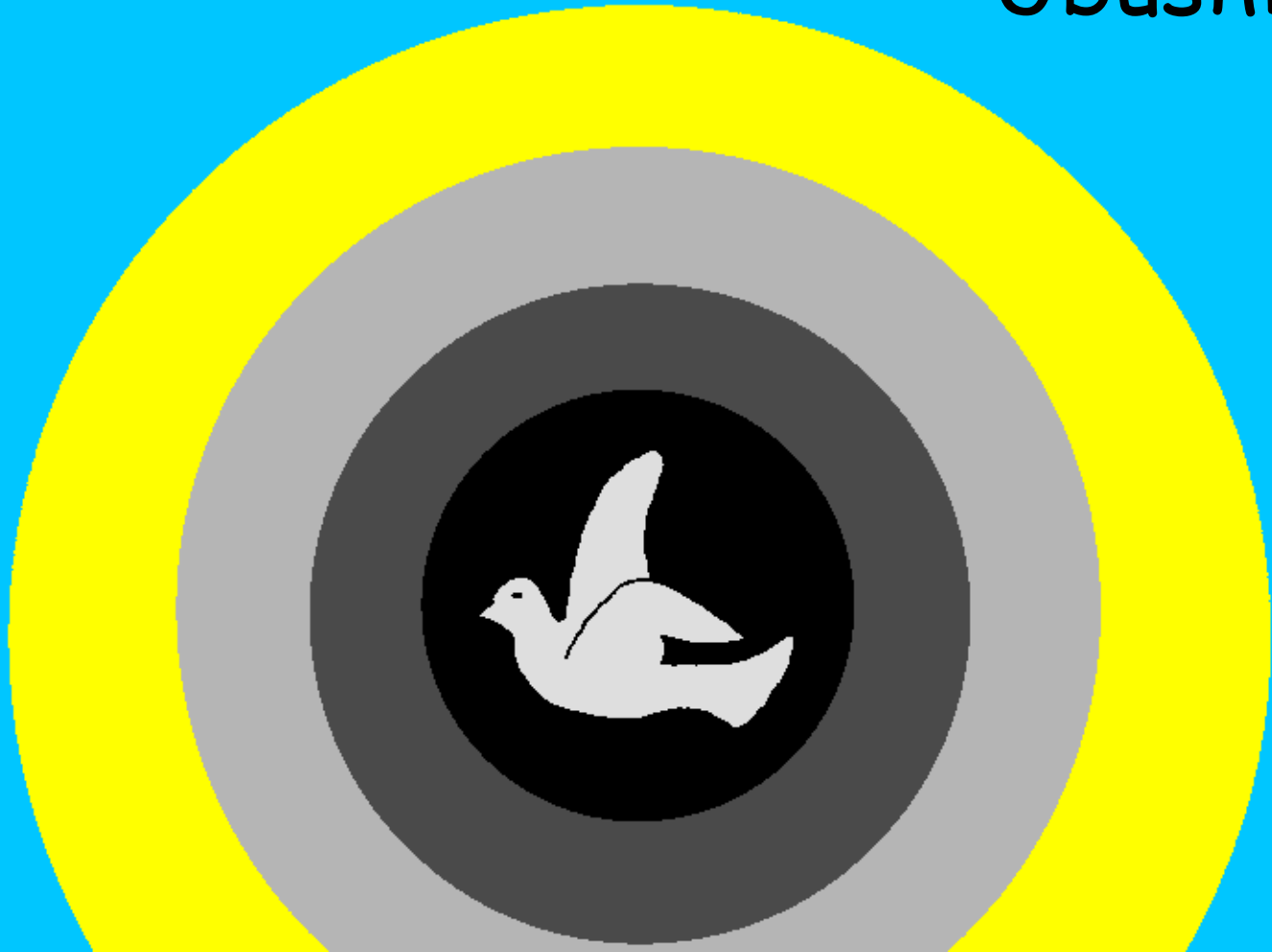




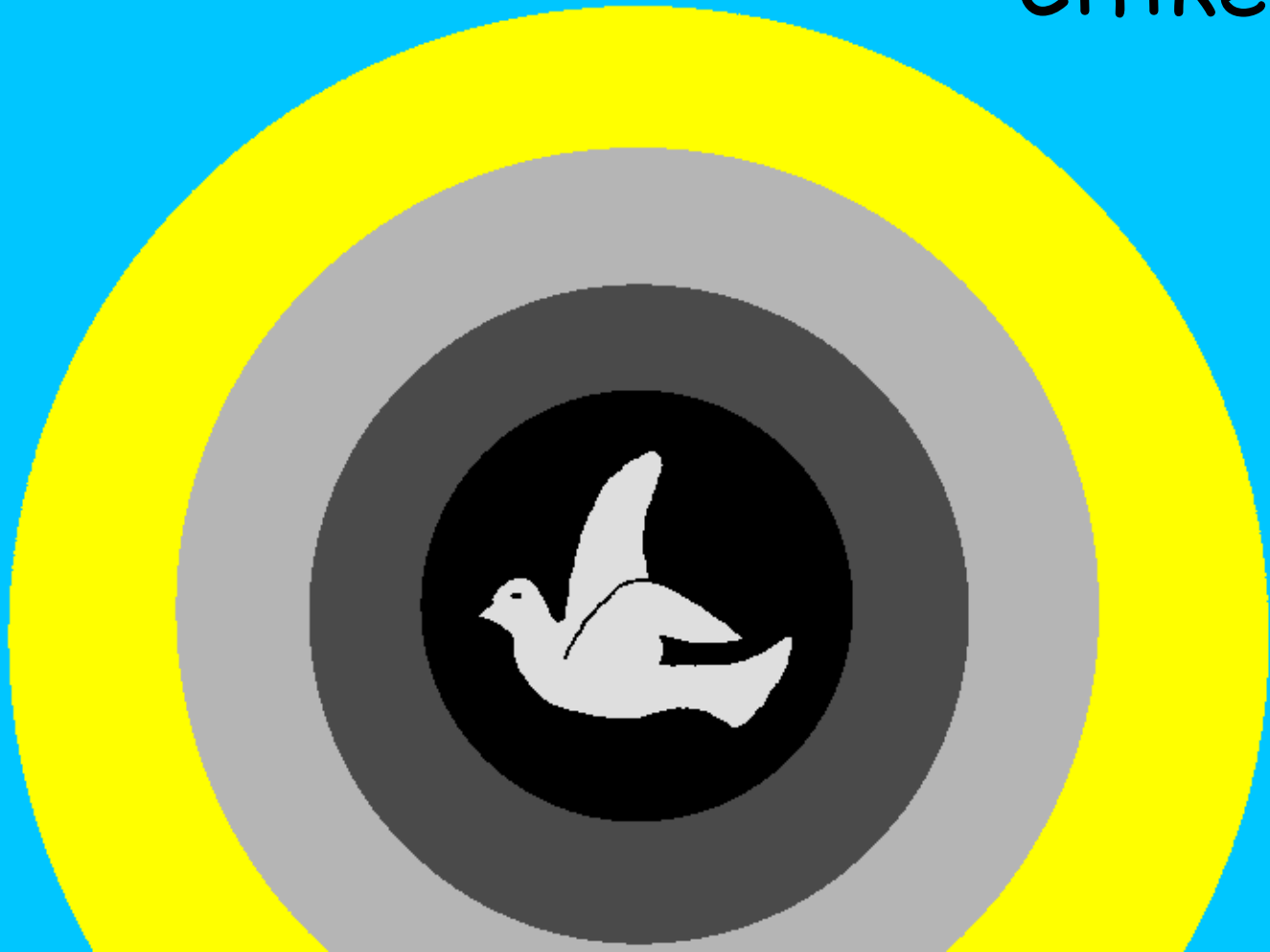
Ne Sonde Tapali Nanga  
Cimo, Ne Imfiti  
Namenshi  
Yashungulukile  
Isonde  
Ilyonse  
Na Lesa  
Alabile  
Nakube  
Ulubuto.



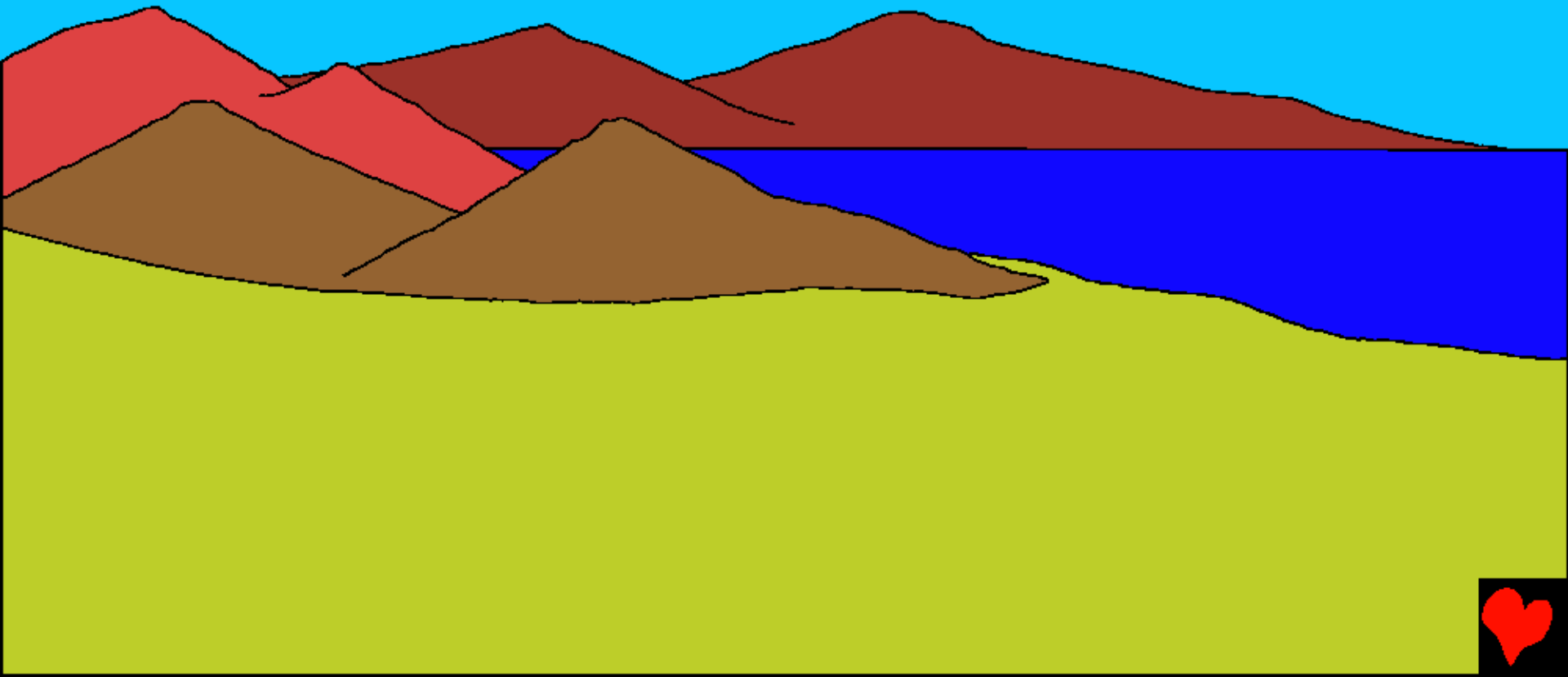
No Uulubuto Lwalishile “Mulenge Atemwa  
Utubuto Lwalishile Lesa Akutele Utubuto  
Atemwa Umwange Akasuba Ne Mfifi  
Ubushiku.



Kabili Kwali Echungulo No Lucelo  
Bwalenga Butatu Lesa Alabile Nakube  
Umufunda Wali Mone Kele. Tenge Fya  
Citike



Ubushiku Bwalenga Bubili, Lesa Aliletele  
Ameshi Yamuli Babemba Bakalamba,  
Bambemba Emimana, Fibe Panshi  
Paulumumulu.



Lesá Tenge Alikutile No Matuba Ifipusa,  
Imiti Fwali Munekele, Tenge Fya  
Limonekele, Tenge Kwali  
Ichungulo Nolucelo  
Mubuciku Bwalenga  
Butatu.



Na Lesa Ali Bumbele A Kasuba  
No Mweshi Ne Ntanda  
Ishingi Tapali Uwinga  
Icingulo Nelucelo Pabushiku  
Bwalenge Bune.



Ifingelengwe  
Fyamulibabemba Ne  
Swi Atemwa Isabi Ne  
Nguni Fyalipabutatiko  
Bwakwa Lesa Ubuciku  
Bwalenga Cisano Lesa  
Abumbile Abumbile  
Inswi Atemwa Isabi  
Ilya Mwele, ...



... Inswi Atemwa  
Isabi Utunini, Enguni  
Ishitali Amolu, Totiti  
Utunguni Lesa Abumbile  
Inswi Atemwa Isaba  
Ukwi Susha Amenshi  
Pesonde Lino, Ne Nguni  
Shamishobo Yalekenaleka  
Ututondoka Pamulandu,  
Palibemba Na Mulwelele,  
Ne Cingulo Nolucelo  
Pashiku Bwalenga Bune.



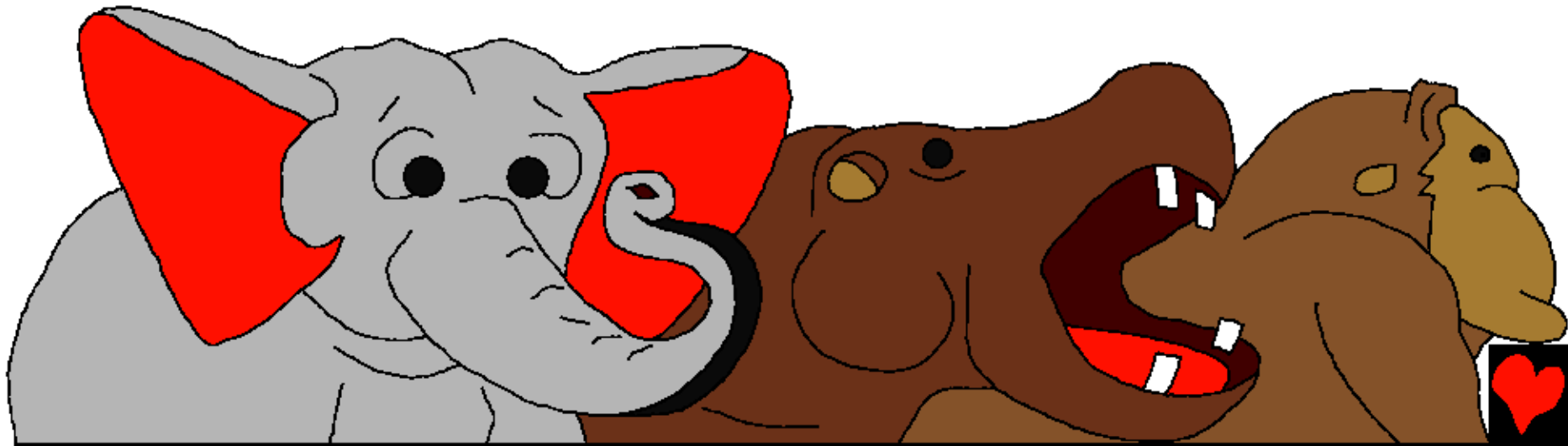


Panuma Ya Fyonse, Lesa Alilabile  
Nakabili Alabile Ati Lekeni Insonde  
Lilete Infilengwa Na Lesa Ifya Bumi:  
Isonfu Shitensha Isonde Ingwena  
Shikali Imyabo Shifipandwe Ifingi  
Bakolwe Wapili Bacilumba, Indyabuluba  
Yapoloka, Bachona Mundosa Kuwendo.

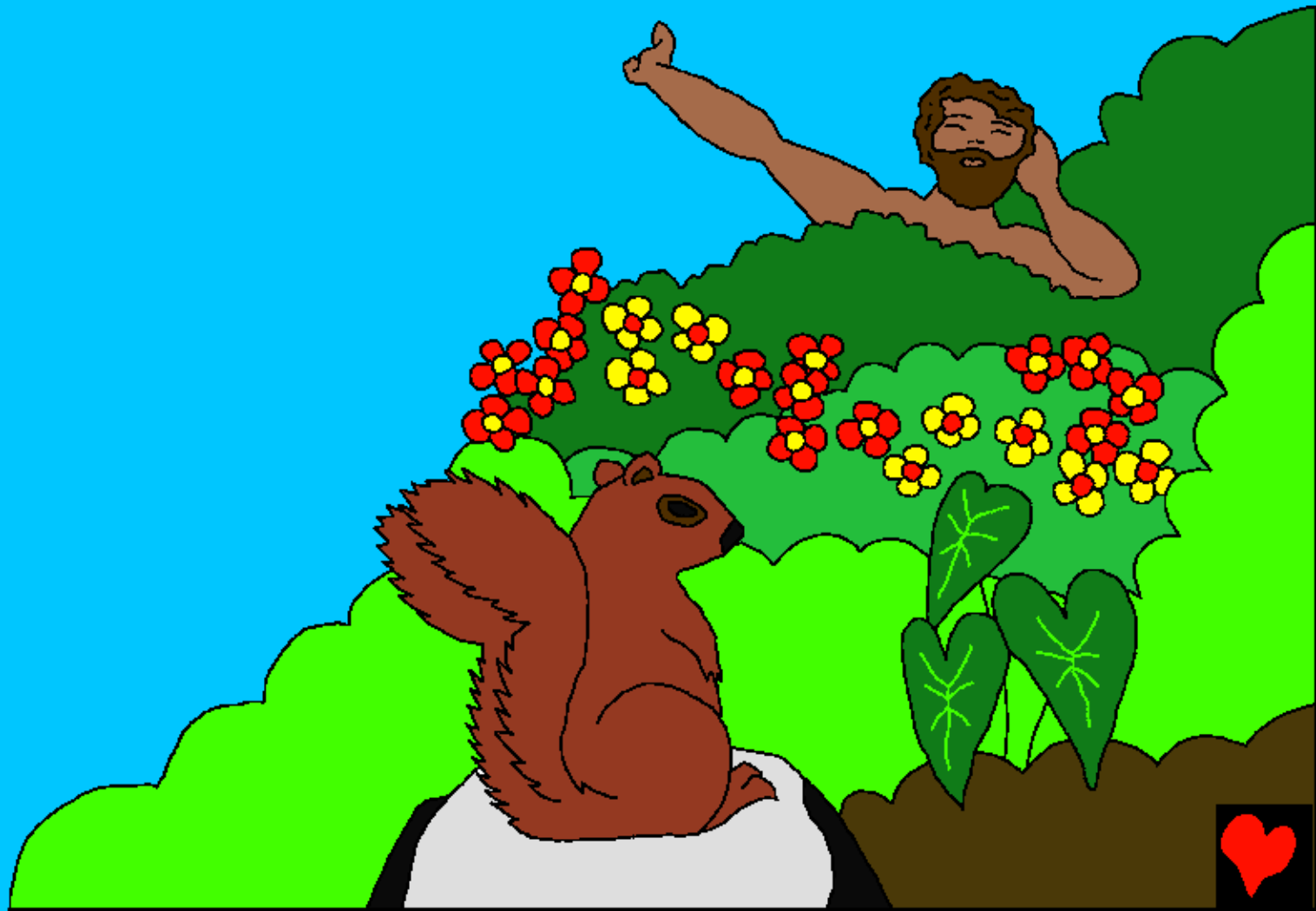


Winanama Bonse Bwabumbilwe  
Bulyabwine Bushiku.

Ne Cingulo Atemwa Ubushika Nakcelo  
Bushiku Bwalenga Mutanda.



Lesá Alicitile Fimbi Pabushiku Bwalenga  
Mutanda Icintu Ica Bune Fyonse Fya  
Pani Shewe No Kulolela Umuntu.



Kwali Ifilyo Mumabala/Muchonde  
Nobwinanama Ukumumbola Umuntu  
(Adamu) Na Lesa Alilabile Natupange  
Umuntu Muchipanshanya  
Ciesu, Lekeni Akabe  
Imfumu Palifyonse  
Pesonde. Na Lesa  
Alilengele  
Icipanshanya  
Cikwe Lesa  
Amulengele  
Wene.



Lesá Alilabile Kuli  
Adamu, Kuti Walya  
Mulingo Ulefwaila  
Mu Mwibala (Edeni)  
Lelo Takuli Kulya  
Kumuti Wamano  
Wakwuishiba Ububi  
Nobusuma Ngawalya  
Kumuti Uyu  
Icishinka Ukafwa.



Ne Mfumu Lesa Yalilabile, Tacilicibune/  
Tecisuma Umwaume Ukwikala Eka.  
Nkomubumbila Kofwa. Lesa  
Aletele Winanguni Na  
Fishimweshimwe Kuli Adamu.



Adamu Alifinike Amashina Fyonse.  
Palifyonse Ifi Tapasangilwe  
Kafwa Wakwa Adamu.



Lesá Aliletele Utulo Twakapelemakufi  
Pali Adamu. Munda Ya Tulo. Lesá  
Alibulile Nolubafi, Lesá  
Alibumbile Umwana  
Kashi Ukufuma Kulubafu  
Lwakwa Adamu. No  
Mwana Kashi Lesá  
Abumbile Ali  
Fye Nikafwa  
Uwamulinga.





Lesa Abumbile Fyonse  
Mushiku Mutanda. Lesa  
Apalile Ubushiku Walenga  
Cinelubali (Cibelushi)  
Ubushiku Bwakutusha.



Ilyo Lesa Alikubumba Fyonse

Ilyashi Lyafuma Kuli Lesa Amashiwi  
Yakwe, In Baibolo

Yasangwa Mukati

Ukutendeka 1-2 (Cipandwa Calenga Cimo  
Ukufika Nakucipandwa Calenga Ububili)

"Ukwingila Kwamashiwi Kupela  
Umwenge Atemwa Ulubuto."  
Amalumbo 119:130





Capwa Nagula  
Ukusondolwala

Iyi baibolo mwaba amalyashi ayakutukosolasha  
ukuishiba Lesa umuweme kabumba wesu kaili  
alafwaya tubenokumwishaba.

Lesa alikwishiba ukutila tulacita ifibipile kaili  
tukomubebukila, ne icilambu cabupulumishi  
nimfwa, nombwa Lesa alikututemwa sana  
pakotupela umulubushi umwana wake po Yesu  
kilisitu. Yesu alikufwilile pamembu shesu  
pacapindama kaili bakututubuka kufwa no  
kubwekala kwi ulu. Nakambi nga twaba no  
ubucetekelo muli yesu no ku mulomba ubwalelo  
pamembusu, akelela imembu shesu. Nokwikala  
nefwe pe na pe atemwa umuyayaya.



Ngawasubila muchine namucishinka,  
ulabile ci kuli Lesa:

wemubyandi Yesu, disubilwe ukutiniwe Lesa  
wamaka yonse, niwe lesa waishile muntuse  
nokufwila imembu shandi pakweba ati  
benomweo pali noshinta ubushikuwalanga  
ubumo nomuyaya, ngafwa ukukubaka nokwikala  
nobe ngo, umwana lukoso nasuminisha. (Amen)

Soma baibolo nikulabila na Lesa inshukushonse.  
Yohane 3:16

