



Iyi agiki mere Obanga te moko tam me jwayo jo ducu ilobo leyi ducu kede winyi. Cuny Obanga ocwer pingo ecweo dano. Ento dano acel oyomo yii Obanga ...

19



Loni onwongo obedo Noa. Oyaa iyi anywali a set, Noa onwongo kite atira dang balere pe. En onwongo woto kede Obanga.

20



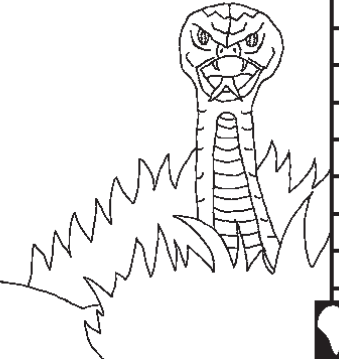
En opwonyo awobe mere adek dang me woro Obanga. Obanga dong te yubere me tic kede Noa iyore a mwonya dang apat totwal.

21

Acaki me cwer cuny dano
Icina ame oyaa ikop Obanga, ame obedo Baibul
nwongere i
Agege 3-6

"Dogola me kopi mio lero."
Jabuli 119:130

Acaki me cwer cuny dano



Jo ocoo obedo Edward Hughes
Jo Ogoo cale obedo Byron Unger; Lazarus

Ngat ogonyo leb obedo Betty Apili Acar
Jo Okoporo M. Maillot; Tammy S.

Icina me 2 ikom 60

M1914.org

Bible for Children, PO Box 3, Winnipeg MB R3C 2G1 Canada

Twero: Cik yeyi me goyo buki me icina ni teki pe icato.

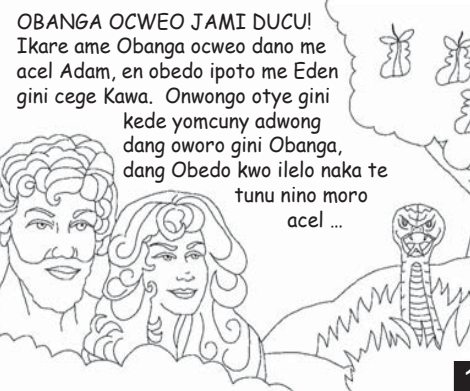
Obanga ngeo ni wan otimo gin areco, ame En lwongo ni bal. Pwod me bal obedo too.

Obanga marowa tutwal, En ocwalo Wode, Yecu, me too ikor yataria me culu wang balewa. Yecu obino akwoo dang te dok ipolo! Amani Obanga dong romo timo wa kica pi balewa.

Ka imito weko baleni, kob kiti bot Obanga: Ama Obanga, Ayee ni Yecu otoo pira ento amani tye dok kwoo. Tim ber ibin ikwoona wek itima kica pi balena, me wek abed ikwoo anyen amani, dang dok ate bedo kedi pi naka. Konya me kwoo piri acalo atini.
Amen. Lakana 3:16

Kwan Baibul wek ikob wun Obanga nino inino!

Lango



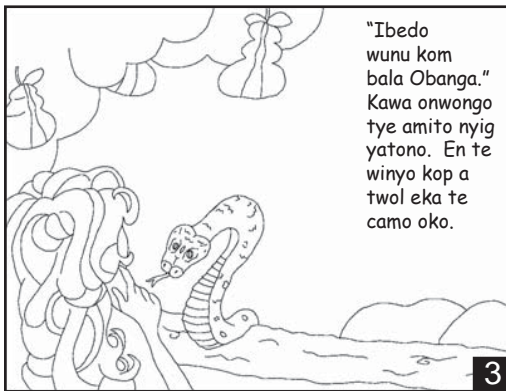
OBANGA OCWEO JAMI DUCU!
Ikare ame Obanga ocweo dano me acel Adam, en obedo ipoto me Eden gini cege Kawa. Onwongo otye gini kede yomcuny adwong dang oworo gini Obanga, dang Obedo kwo ilelo naka te tunu nino moro acel ...

1



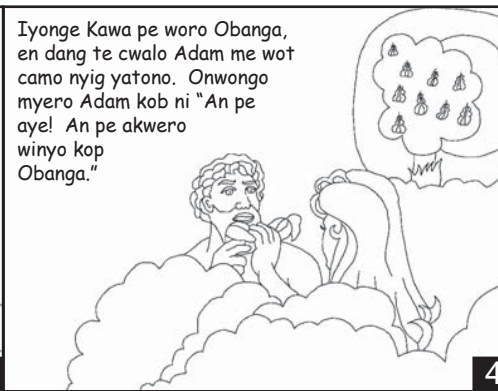
Twol te penyoo Kawa ni, "Cee ni Obanga okobo ni pe icam wunu nyig yeni ducu?" Ent te gamo ni, "Wan oromo camo nyig yeni ducu kono ka acel keken," Wan oto oko ka ocamo nyo ogudu nyig yatono. "Twol te gamo ni, Pe kom ito wunu."

2



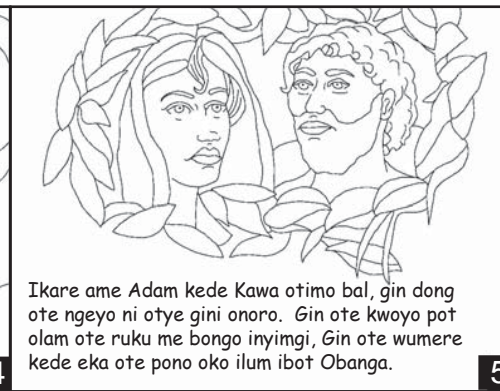
"Ibedo wunu kom bala Obanga." Kawa onwongo tye amito nyig yatono. En te winyo kop a twol eka te camo oko.

3



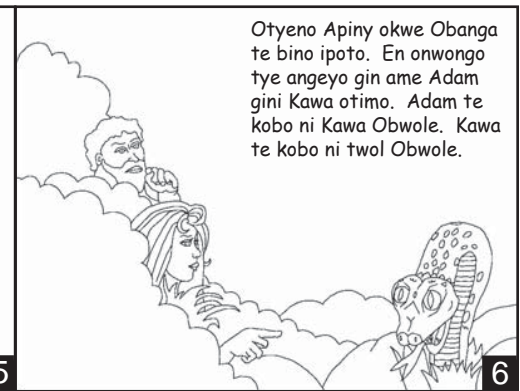
Iyonge Kawa pe woro Obanga, en dang te cwalo Adam me wot camo nyig yatono. Onwongo myero Adam kob ni "An pe aye! An pe akwero winyo kop Obanga."

4



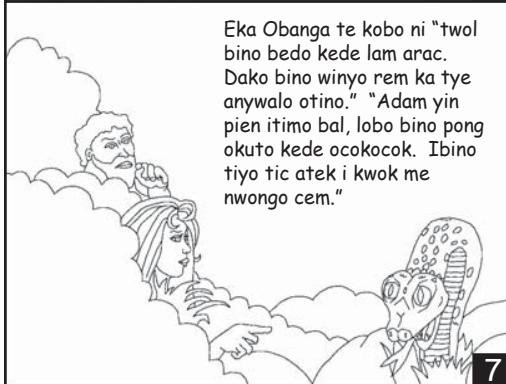
Ikare ame Adam kede Kawa otimo bal, gin dong ote ngeyo ni otye gini onoro. Gin ote kwoyo pot olam ote ruku me bongo inyimgi, Gin ote wumere kede eka ote pono oko ilum ibot Obanga.

5



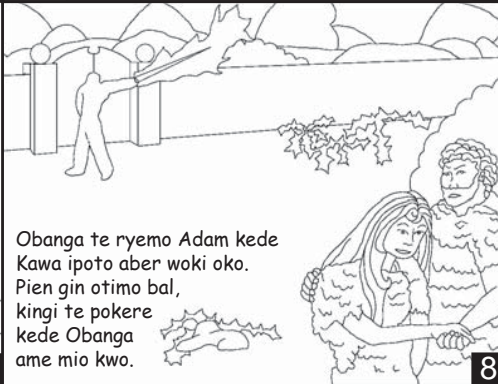
Otyeno Apiny okwe Obanga te bino ipoto. En onwongo tye angeyo gin ame Adam gini Kawa otimo. Adam te kobo ni Kawa Obwole. Kawa te kobo ni twol Obwole.

6



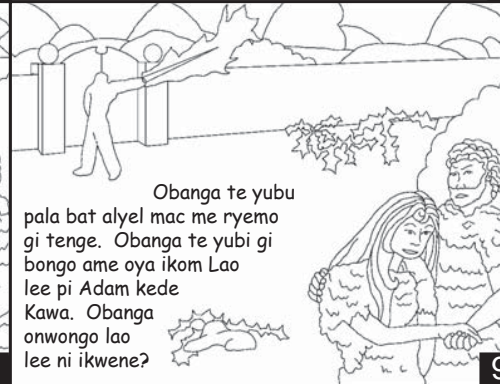
Eka Obanga te kobo ni "twol bino bedo kede lam arac. Dako bino winyo rem ka tye anywalo otino." "Adam yin pien itimo bal, lobo bino pong okuto kede ocokocok. Ibino tiyo tic atek i kwok me nwongo cem."

7



Obanga te ryemo Adam kede Kawa ipoto aber woki oko. Pien gin otimo bal, kingi te pokere kede Obanga ame mio kwo.

8



Obanga te yubu pala bat alyel mac me ryemo gi tenge. Obanga te yubi gi bongo ame oya ikom Lao lee pi Adam kede Kawa. Obanga onwongo lao lee ni ikwene?

9



Kare pe okato abor, Adam kede Kawa te nywal. Atin kao gi kain onwongo obedo apur. Wodgi me aryo Abel onwongo obedo akwat. Inino moro acel Kain te keli Obanga pot dek me tyer.

10



Abel okelo romi mege mogo abeco adong loo aloa acalo tyerere bot Obanga. Yii Obanga obedo ayom totwal i mic a Abel.

11



Yii Obanga onwongo pe yom i mic a Kain. Yii Kain te wang totwal. Ento Obanga te kobo ni, "Ka itimo gin aber, pe oromo joli?"

12



Akemo a Kain pe obin oket. Tu cawa moro kano ipoto kunu en te goyo Abel-neko oko.

13



Obanga te kop kede Kain ni, "Omini Abel tye kwene?" Kain te kobo goba ni, "pe angeo." "An en agwoko omina bo?" Obanga te pwodo Kain kun kwanyo gum me pur oko ikome te miye bedo along piny.

14



Kain te yaa oko ibot RWOT. En onwongo onyomo nyaka Adam kede Kawa. Eka ote gwoko gini pacugi. Pe te tero kare apol, ikwae a Kain kede kede ikwae ikwae gi te pongo boma ame en ocako oko.

15



Ento jo tung a Adam Kede Kawa dang te nya oyotoyot. Ikare naca onwongo jo rii pi mwaki a pol kato onyoni oko.

16



Ikare ame en onywalo Set, Kawa te kobo ni, "Obanga omia set me leyo ka wang Abel." Set onwongo maro Obanga dang te rii waki 912 dang te nywalo otino apol.

17



Jo I lobo te cako doko otim bale apol ikare ame anyayi apapat owot ibino ilobo kun wot ilubere aluba.

18