

Baibul Otino  
Kelo



Polo, Pacu  
Obanga acil  
aber



Jo ocoo obedo: Edward Hughes

Jo Ogoo cale obedo: Lazarus  
Alastair Paterson

Jo Okoporo: Sarah S.

Ngat ogonyo leb obedo: Betty Apili Acar

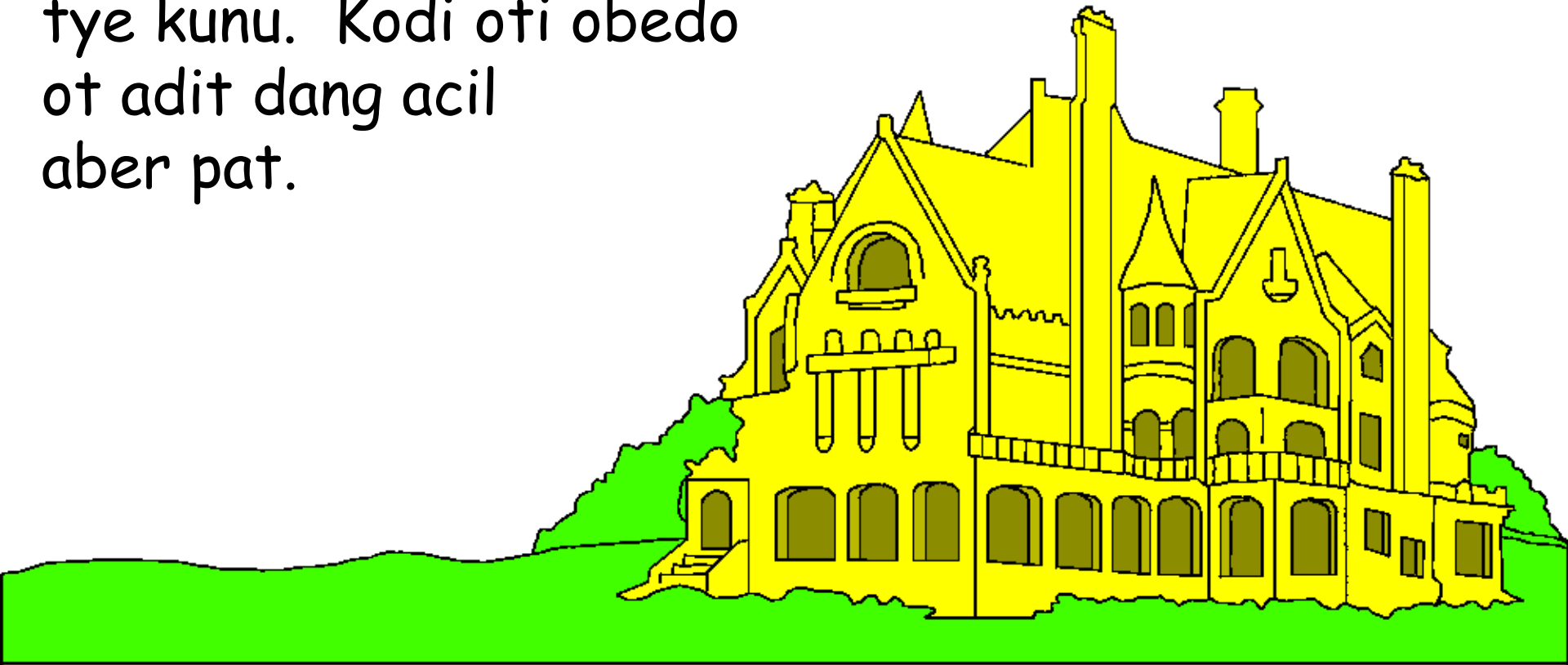
Jo oyubu obedo: Bible for Children  
[www.M1914.org](http://www.M1914.org)

©2020 Bible for Children, Inc.

Twero: Cik yeyi me goyo buki me icina ni teki pe icato.

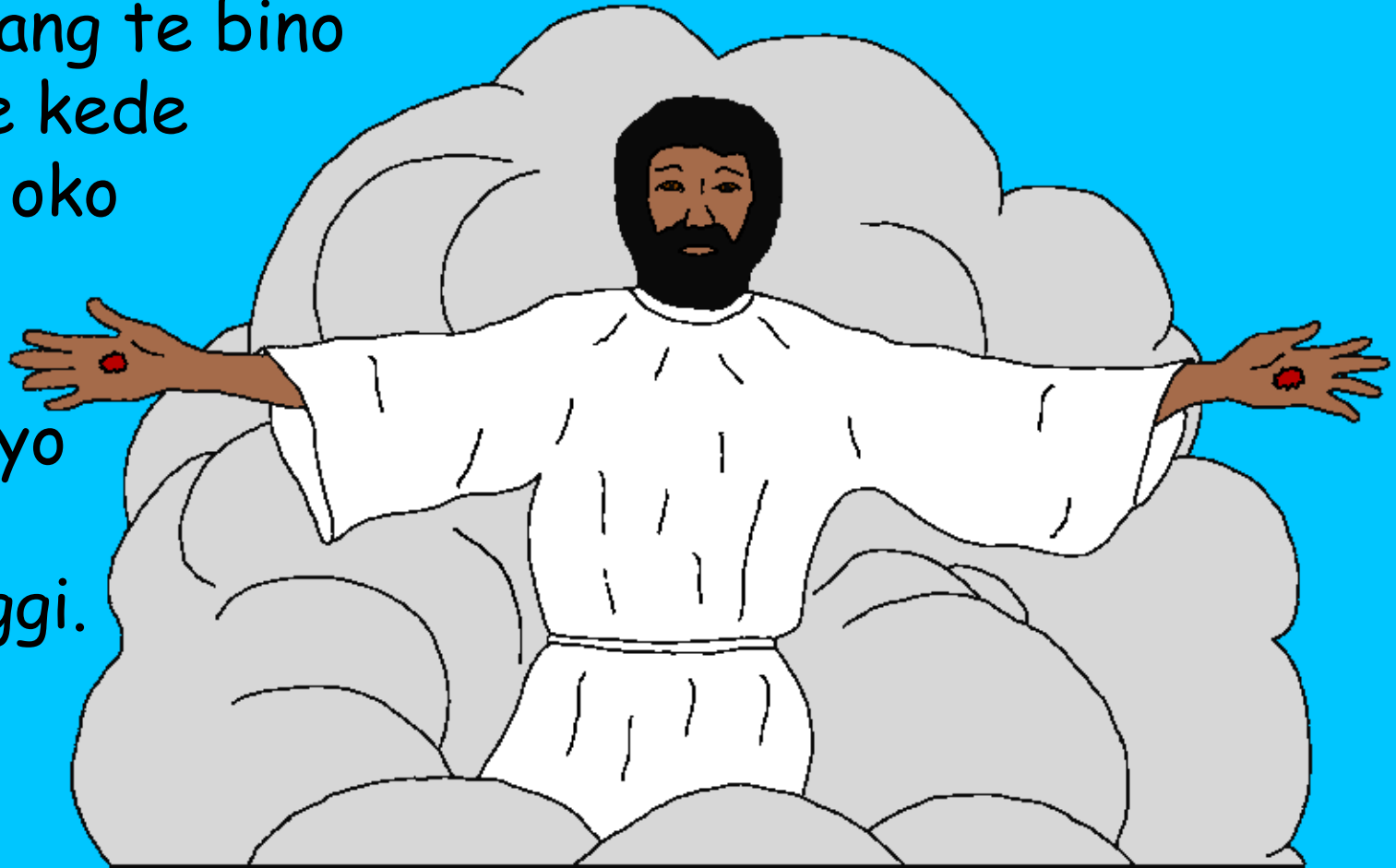


Ikare ame Yecu okwo ilobo, En okobi okwena Mere pi Polo. En onwongo lwongo ni, "Ot a Papa," dang te kobi gi ni wudi abeco adongo tye kunu. Kodi oti obedo ot adit dang acil aber pat.

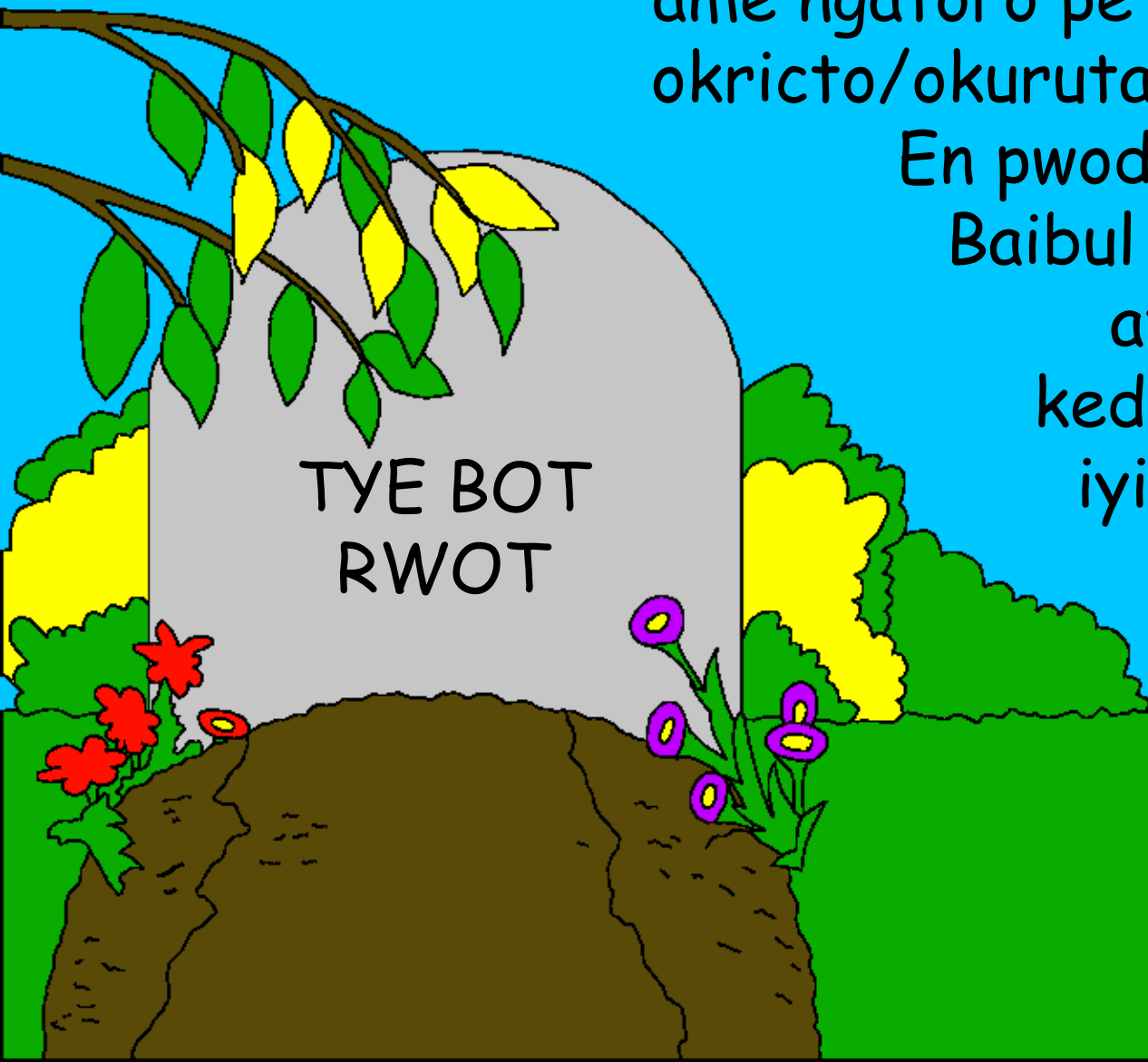


Yecu te kobo ni, "An awot yubu kabedo pirwu. Dang ka awoto ayubu kabedo pirwu, An dok adwogo gamuwu ikoma ate terowu iye." Yecu dang gite te wot ipolo inge cerere ikin jo oto. Okwena Mere onwongo tye aneno kit ame En tye ayito kede ipolo kede kit ame

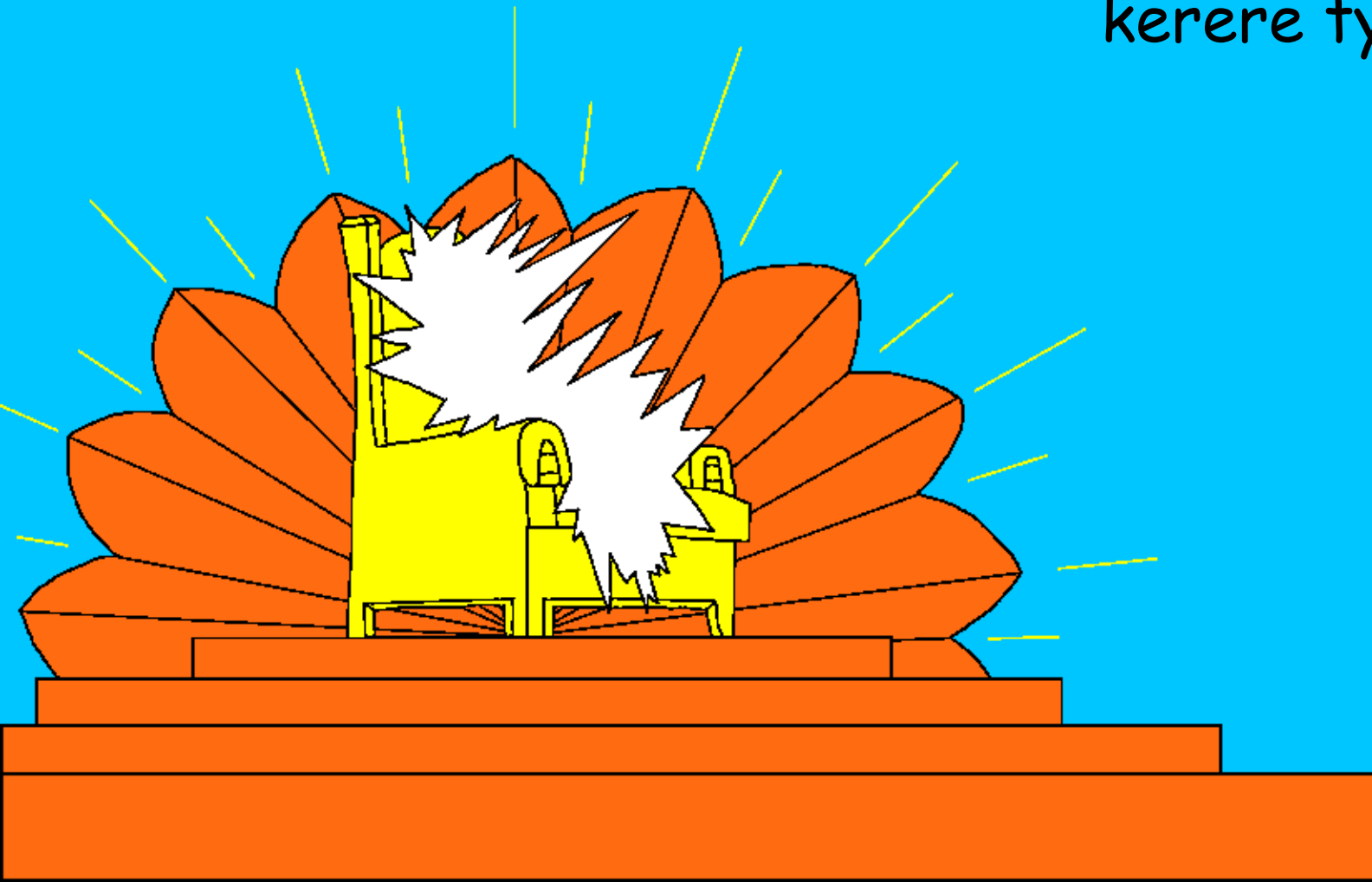
pol dang te bino  
wume kede  
dang oko  
En  
te  
rwenyo  
oko  
iwanggi.



Cako ikare no, okricto/okrictayoyoyo cikere a  
Yecu ni edwogo omo gi. Yecu okobo ni edwogo atura  
ame ngatoro pe tye angeyo. Ento  
okricto/okurutayo adong oto ame  
En pwod pe odwogo kono?  
Baibul kobo ni gin owoto  
atira ote wot bedo  
kede Yecu. Bedo ape  
iyi kom, obedo bedo  
atye i Rwot.



Nyut a Lakana, ame obedo buk me agiki iyi Baibul-li,  
kobiwa kit ame polo cil aber kede. Gin adong ber  
aloo en aye ni Polo obedo pacu Obanga. Obanga tye  
kanoro ducu ento kom  
kerere tye i Polo.



Malaika kede jo okene  
woro Obanga ipolo kunu.  
Medo kede jo Obanga ducu  
ame oto te wot ipolo dang.  
Gin owero werogo amit me  
pako Obanga.



Man obedo nyig kopogo ame tye iyi weroro acel ame  
gin wero: YIN IPORE PIEN ILAROWA IREMONI  
PI OBANGA IKIN ROK DUCU  
KEDE LOBO DUCU EKA ITE  
MIYOWA BEDO RWODE  
KEDE OLAMDOG PI  
OBANGAWA.

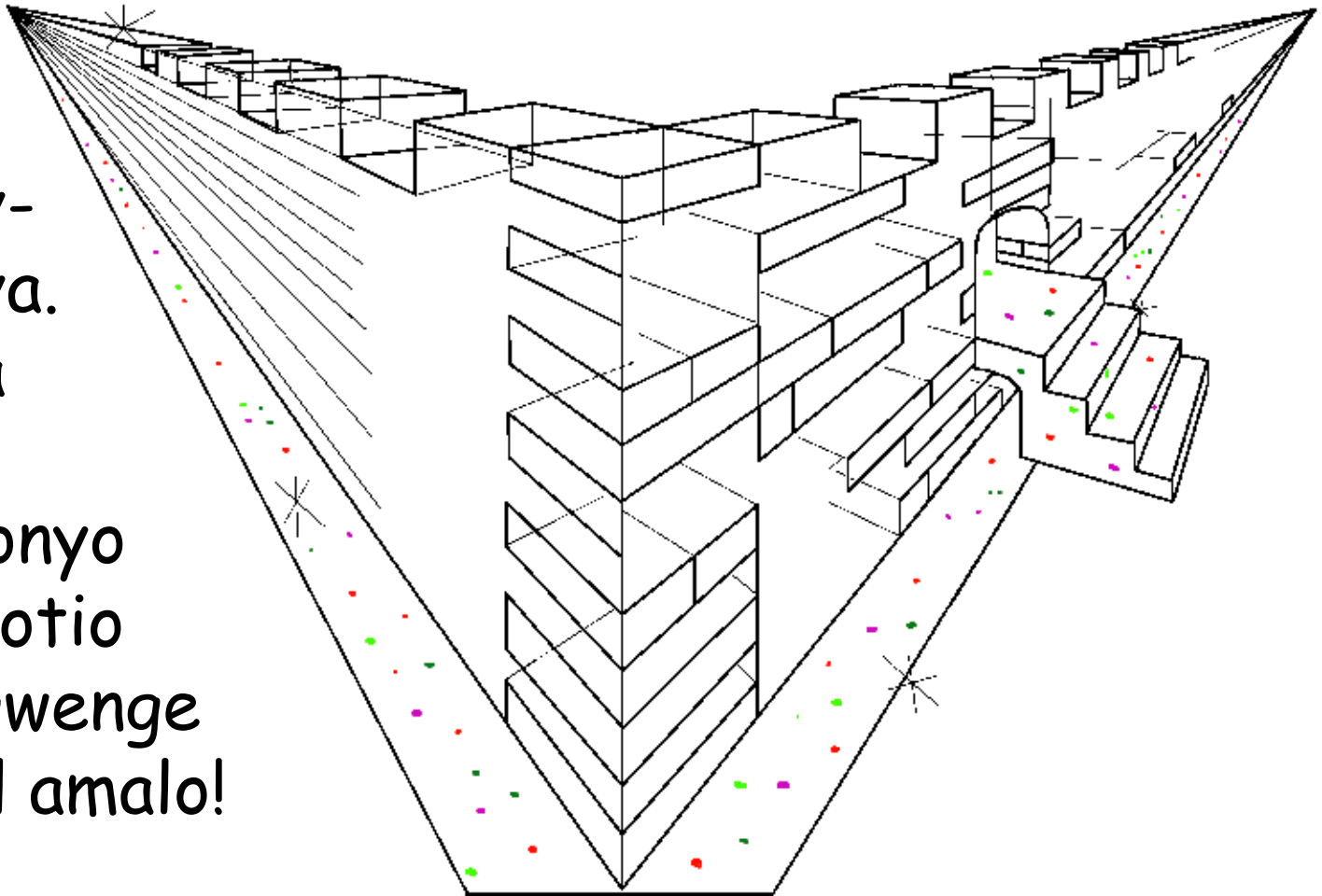
(Nyut a  
Lakana 5:9)





Iyi pot papara me agiki-agiki me baibul nyutu polo  
acalo "YERUCALEM ANYEN." Dit-ditoro, ame apama  
mere bor. Apama mere oyubu igweng me wel amalo  
ame ineno yie bala gilaci. Mola abeco kede gwenge  
abeco en ame oketo guti me apama ot, ame kala gi

tye  
aryeny-  
aryenya.  
Dogola  
adito  
ame donyo  
iboma otio  
kede gwenge  
me wel amalo!



Dogoli adongo ni pe ocego gi. Kong owotu obebea onen wunu yie...AJONI! Yii Polo kara dong ciciloro. Boma ni oyubu kede daab ame ineno yie bala gilaci. Naka yoo gudu me yii kunu ducu oyubu kede daab.



kulu moro aber acil ame pii me kwo molo iye yaa ite kom ker Obanga. Inget kulu ryoryo yat me kwo tye iye, yat ame rik onwongo tye ipoto me Eden ca. Yat ipone mere ber meicel. Nyako kwone nyig yen apar aryo apatpat, nyako nyig yat apapat dwe-idwe. Eka pot yat me kwo ni obedo me cango kom jo ilobe ducu.



Polo dong pe mito ceng onyo dwe me miyo lero.  
Kwogo Obanga keken mie en pong kede lero.  
Iwororo pe kunu.



Naka leyi ame tye i Polo dang pat. Gin ducu obedo mot dang omaro jo. Ipee kede otin romi dang cemo karacel. Naka ingatu mogo ager dang tye amwodo lum bala dyang. RWOT tye akobo ni, "Pe obino wano nyo balo ginoro iwi got acil."

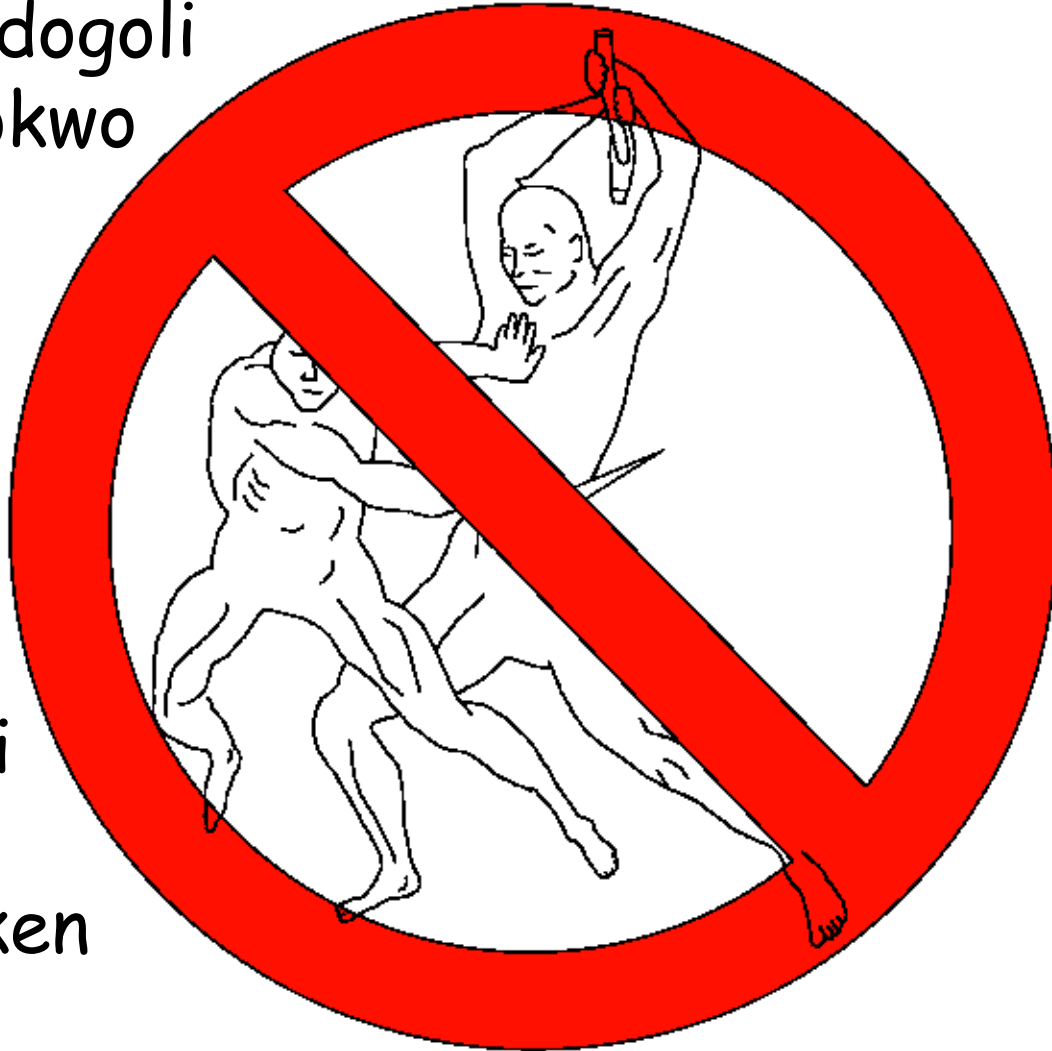


Ka oneno wunu, onwongo ni gigimogo tye orem i Polo.  
Pe tye koporo me akemo ame winyere kunu. Pe tye  
ngatoro atye alweny kunu onyo ngat ame tye awanya.

Kupulu pe idogoli  
kunu pien okwo  
pe i Polo.

Ogoba,  
onek,  
ojwagi/  
ojogi,  
onyo  
otim aranyi  
pe kunu.

Balloro keken  
pe i Polo.

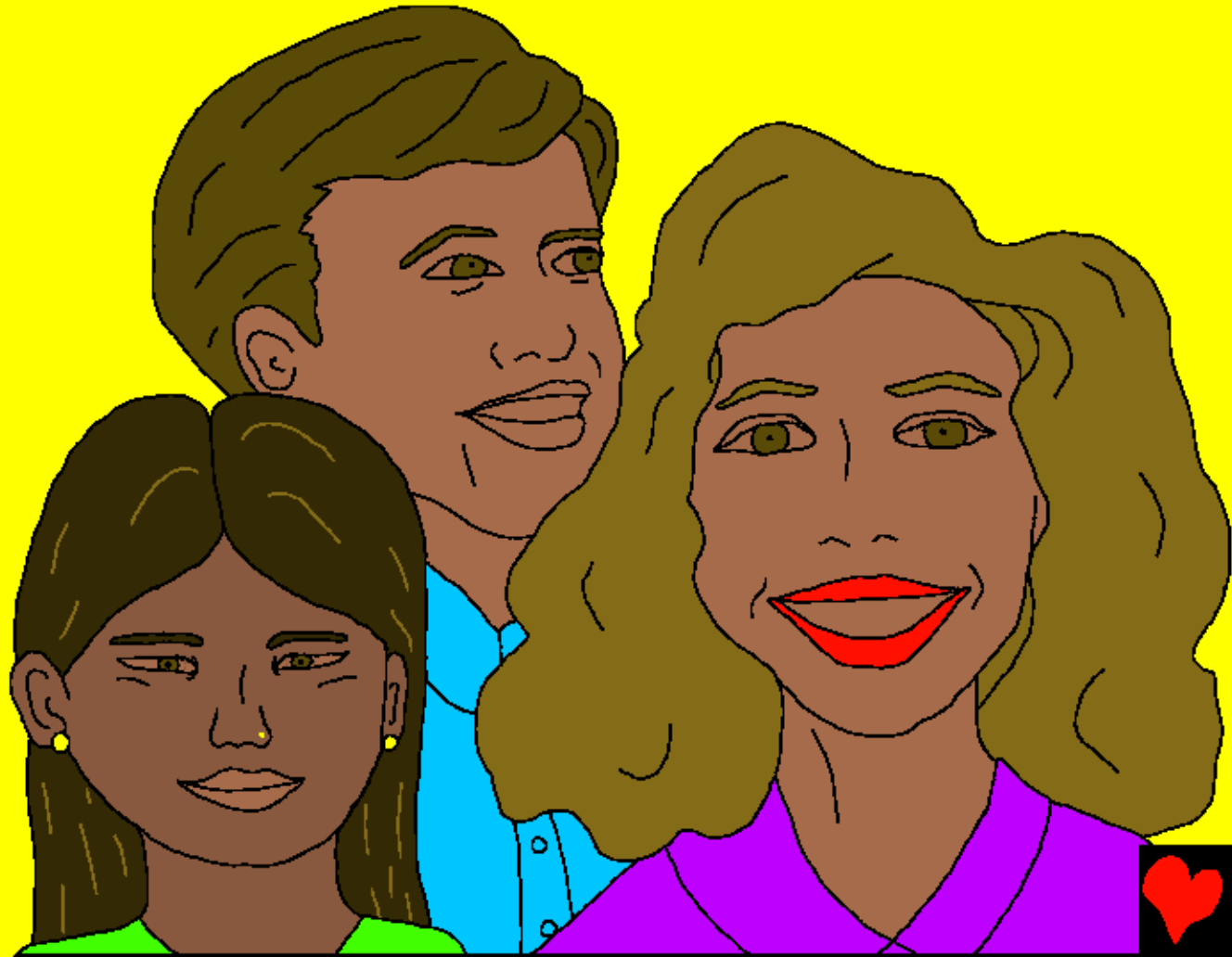


I Polo bot obanga  
pigwang pe iye.  
Icel-icel, jo  
Obanga kok pi  
cwer cuny me  
kwo. I Polo  
Obanga bino  
jwayo pigwang  
ducu.



Too dang pe i Polo. Jo Obanga ducu abedo pi naka  
bot Rwot. Kumu moro dong pe, koko moro dong pe,  
remoro dong pe. Two dang pe, pokere dang pe,  
yiko jo otoo dang pe.

Jo i Polo ducu  
yii gi tye ayom  
pi naka naka  
bot Obanga.



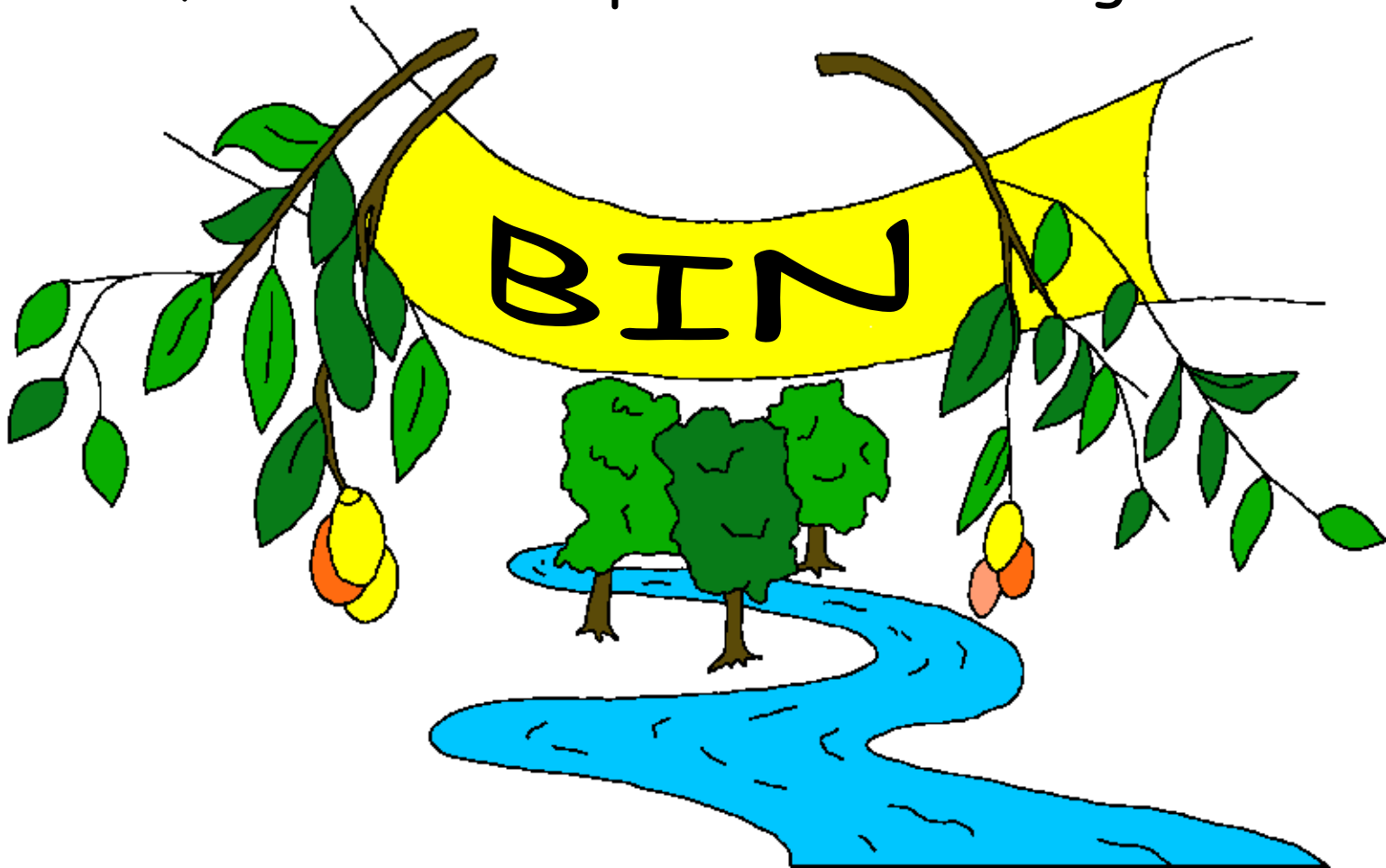


Adong aber aloo ducu Polo tye pi awobe kede anyira  
(jo adongo dang tye kunu) ame oyee ikom Yecu  
Kricto acalo Alargi dang owore acalo Rwotgi. I Polo  
kunu tye bukoro kunu ame olwongo ni Buk me Kwo  
Atin Romo. Tye opong ka inying jo.  
Ingeo nying jo mene ame otye  
ocoo iyie kunu?

Jo ducu ame  
oketo gen-gi  
ikom Obanga.



Kop me agiki ame Baibul kobo ikom polo obedo lwongo aber meichel. "Dang tipu kede atera kobo ni 'bin!' Dang wek ngat ame winyo kob ni 'bin!' Dang wek ngat oryo tye aneko bin. Dang ngat atye kede miti, wek bin mat pii me kwo abongo culoro."



Polo, Pacu Obanga acil aber

Icina ame oyaa ikop Obanga, ame obedo Baibul

nwongere i

Lakana 14; 2 Jo Korinti me 5;  
Nyut a Lakana 4, 21, 22

"Dogola me kopi mio lero."  
Jabuli 119:130



Agiki



Icina me Baibul kobiwa kop ikom Obangawa  
aber woki ame ocweowa dang tye amito ni inge.

Obanga ngeo ni wan otimo gin areco, ame En lwongo ni bal.  
Pwod me bal obedo too, Ento Obanga mari tutwal, en ocwalo  
Wode, Yecu, me too ikor yataria wek jo pwode pi baleni. Eka  
Yecu te cer oko eka te wot pacu i Polo! Ka yin iyee ikom Yecu  
ite kwaye ni en timi kica pi bali, En atimo dang! En te bino  
kwo ikomi, Eka yin ite kwo kede en pii naka.

Ka iyee ni man abedo kop ateni, kob kiti bot Obanga:

Ama Yecu, an ayee ni ibedo Obanga, dang idoko dano  
me wek itoo pi balena, ento aman dok itye kwo. Tim ber  
ibin ikwoona me itima kica ibalena, me wek dong abed ikwo  
anyen, wek nino moro abin akwoo kedi naka. Konya me  
wori dang me kwo piri acalo atini. Amen.

Kwan Baibul wek ikob wun Obanga nino inino! Lakana 3:16

